

General Electric Company

CLASS V INJECTION PERMIT AND SEPTIC TANK/WOOD CRIB CLOSURE REPORT

Former TBE Machine Shop Property

Nikiski, Alaska

ADEC File No. 2323.38.029

UIC ID# AK122P5-17-13489

March 2017

**CLASS V INJECTION
PERMIT AND SEPTIC
TANK/WOOD CRIB
CLOSURE REPORT**



Rebecca Andresen

Vice President



Matthew Pelton

Principal Environmental Engineer

Former TBE Machine Shop Property
Nikiski, Alaska

ADEC File No: 2323.38.029

Prepared for:

General Electric Company

Prepared by:

Arcadis U.S., Inc.

801 Corporate Center Drive

Suite 300

Raleigh

North Carolina 27607

Tel 919 854 1282

Fax 919 854 5448

Our Ref.:

B0032155

Date:

March 2017

This document is intended only for the use of the individual or entity for which it was prepared and may contain information that is privileged, confidential and exempt from disclosure under applicable law. Any dissemination, distribution or copying of this document is strictly prohibited.

CONTENTS

Acronyms and Abbreviations.....	iii
1 Introduction	1
2 Site Description	1
3 Injection Well System.....	1
4 Pre-Closure Activities.....	2
5 Closure Activities.....	2
5.1 Removal of Septic Crib, Septic Tank, and Surrounding Soils	2
5.2 End-Point Sampling	3
5.3 Waste Characterization and Disposal.....	3
6 Conclusion	4
7 References.....	5

TABLES

Table 1. Summary of Backfill Soil Sample Analytical Results

Table 2. Summary of End-Point Sample Analytical Results

FIGURES

Figure 1. Site Location

Figure 2. Site Plan and Soil Removal Areas

APPENDICES

A. Photographic Log

B. Waste Manifests and Certificates of Disposal

ACRONYMS AND ABBREVIATIONS

ADEC	Alaska Department of Environmental Conservation
Arcadis	Arcadis U.S., Inc.
bgs	below ground surface
Closure Report	Class V Injection Permit and Wood Crib Closure Report
ft ²	square feet
KPB	Kenai Peninsula Borough
GE	General Electric Company
Plan	Class V Injection Permit and Wood Crib Closure Plan
PID	photoionization detector
TBE	TBE Machine Company, Inc.
USEPA	United States Environmental Protection Agency

1 INTRODUCTION

Arcadis U.S., Inc. (Arcadis) has prepared this Class V Injection Permit and Wood Crib Closure Report (“Closure Report”) on behalf of the General Electric Company (GE) to document closure activities performed at the former TBE Machine Shop property located in Nikiski, Alaska (“Site”). The Site location and surrounding area are shown on **Figure 1**.

Closure activities were conducted in accordance with the *Class V Injection Permit and Wood Crib Closure Plan* (Plan) (Arcadis, 2016a). The plan was approved by the United States Environmental Protection Agency (USEPA) on July 18, 2016. Work was conducted in accordance with the applicable laws and regulations related to removal of materials from the septic tank, wood crib, and adjacent to the tank/crib as specified by 40 CFR §§ 144.12(a) and 144.82.

2 SITE DESCRIPTION

The Site includes Lots 11 and 12 of the Bernice Lake, Alaska Industrial Subdivision, within the Kenai Peninsula Borough (KPB), Alaska. The Site comprises approximately 74,000 square feet (ft²) and is located at 49200 Kenai Spur Highway (milepost 22.5), Nikiski, Alaska. The Site is currently unoccupied and the land is leased by GE. The Site was used by GE prior to 1984 as an apparatus service shop. After 1984, it was leased by GE to TBE Machine Company, Inc. (TBE), which serviced oil field equipment. Operations were conducted in a 12,500 ft² steel-framed building on a concrete slab foundation. The building and concrete slab were deconstructed and removed by Arcadis, on behalf of GE, as part of Site improvements completed in October 2014. No operations are currently being conducted at the Site, with the exception of property maintenance and the operation and maintenance of an in-well remediation groundwater treatment system, the components of which are housed in a small shed.

From 2014 to 2016, groundwater at the Site was treated by an in-well remediation treatment technology, as documented by the *ART Post-System Startup Report* (Arcadis, 2014). The remediation system was shut down in June 2016 as documented in the *ART Second Annual Monitoring Report* (Arcadis, 2016b). Groundwater quality at the Site is now being monitored semi-annually through a network of 11 monitoring wells. Current Site features, including the on-Site monitoring wells, are shown on **Figure 2**.

3 INJECTION WELL SYSTEM

Three floor drains historically ran west to east underneath the location of the former building. Liquids from the drains went through an oil/water separator and then discharged to a cesspool. The oil/water separator was removed at an earlier date. The cesspool was excavated and removed in 1998, and the termination point was found to be a wood crib located approximately 64 feet east of the former building and approximately 3 feet north and east of the adjacent septic crib. The wood crib was approximately 4 foot x 4 foot x 4 foot and buried at a depth of 8-12 feet below ground surface (bgs). Shallow groundwater at the Site is encountered at a depth of approximately 45 feet bgs and is unconfined, consistent with the regional hydrogeology.

A sanitary waste drain historically ran west to east from the building toilets to a septic tank, after which liquids were discharged to a septic crib located approximately 8 feet southwest of the cesspool crib.

Records do not indicate that the septic crib was used for anything other than sanitary waste. However, during the 1998 cesspool excavation, it was discovered that an overflow pipe from the septic crib discharged into the cesspool crib. Former locations of the drainage features, septic tank, and crib locations are shown on **Figure 2**.

Soil data presented in the *Former Wood Crib Assessment Report* (Arcadis, October 2015) indicated that soil impacts began at depths below the top of the septic tank and crib structures and were horizontally limited to the area immediately around the tank and crib. Shallow soils in vicinity of the septic tank and crib were not impacted. Furthermore, there were no observed impacts at any depths along the former pipe alignment. Excavation for removal of the septic crib and tank were therefore limited to the minimum horizontal dimensions needed for safe removal of the targeted structures, with deeper excavation performed until visibly clean soil was encountered.

4 PRE-CLOSURE ACTIVITIES

On September 27, 2016, a subsurface survey was conducted to confirm the location of the septic tank and crib. In addition, utilities were identified to minimize the possibility of disrupting services and to protect the safety of the workers. Subsurface utilities were located based on markouts completed by public utility locating companies and visual site inspections. A private utility locating company (GeoTek Alaska, Inc. [GeoTek]) was also contracted to clear areas where subsurface work was anticipated. Markouts completed by GeoTek were done using both electromagnetic equipment and ground-penetrating radar.

5 CLOSURE ACTIVITIES

5.1 Removal of Septic Crib, Septic Tank, and Surrounding Soils

Between September 28 and October 4, 2016, the septic tank and associated crib were removed in accordance with Uniform Plumbing Code and Alaska Department of Environmental Conservation (ADEC) requirements. As approved by ADEC in an e-mail dated July 18, 2016, soils in the top 6 feet around the septic tank and septic crib were excavated, staged on plastic in batches of approximately 10 cubic yards (CY), and screened with a photoionization detector (PID). PID readings for the staged soils were low (below 5 parts per million [ppm]), so the shallow excavated soil was used as backfill.

The top of the septic crib was located at approximately 7 feet bgs. The septic crib was filled with approximately 700 gallons of liquid, which was pumped from the crib using a vacuum truck and containerized in polyethylene totes by NRC Alaska, LLC (NRC). The totes were staged at the Site until the contents could be properly characterized for disposal as discussed in Section 5.3. The crib structure and underlying soils were removed to a final depth of 19 feet bgs, at which point visibly clean soil was reached (see photo log in **Appendix A**). The septic crib and soils excavated from depths greater than 6 feet bgs were placed in shipping containers for off-Site disposal.

The top of the septic tank was located at approximately 5.5 feet bgs. No free liquids were discovered within the tank; however, solids filling six drums were removed from the tank and staged at the Site for characterization prior to disposal. The fiberglass septic tank was removed from the excavation in one piece and placed on plastic to downsize for disposal. The septic tank and underlying plastic were then placed in

a super sack tote and staged at the Site prior to disposal. A limited portion of pipe adjacent to the septic tank was found and removed; however, no additional pipe structures along the expected pipe alignment were discovered during excavation activities. The piping was containerized with the septic tank for disposal. Soil under the septic tank was removed to a final depth of 12 feet bgs, at which point visibly clean soil was reached (See **Appendix A**). Soil excavated from a depth greater than 6 feet bgs was placed in shipping containers for off-Site disposal.

Soil stockpiled from the top 6 feet of the excavation was utilized for backfill at the base of the excavation. Additional backfill material from a local borrow source located in Soldotna was imported to fill the remainder of the excavation. The material was characterized prior to import to confirm that it was clean as discussed in the July 18, 2016 e-mail correspondence with ADEC. Results are presented on **Table 1**. Disturbed areas were then graded and seeded to restore the Site as close as practical to pre-excavation conditions.

5.2 End-Point Sampling

To supplement soil characterization data summarized in the Work Plan, prior to backfilling, an additional soil sample was collected from below the endpoint of the former septic discharge, below the septic crib location. The sample was collected in clean, laboratory-supplied containers and preserved specific to the analysis to be performed. Sample containers were labeled to include the date, time, location and depth of the sample collection and immediately stored in an iced cooler. The samples were retained in the cooler and accompanied by a chain-of-custody through delivery to the TestAmerica in Seattle, Washington. Samples were analyzed for SVOCs via USEPA Method 8270D and total metals (arsenic, cadmium, chromium, and lead) via USEPA 6020C. Results are presented on **Table 2**.

5.3 Waste Characterization and Disposal

Soil data obtained during characterization activities were utilized to develop a waste profile prior to excavation activities for the septic crib and deep (>6 feet bgs) soils. Shipping containers, once filled, were covered and transported from the Site for disposal at Waste Management's Columbia Ridge Landfill facility (18177 Cedar Springs Lane, Arlington, OR 97812, USEPA #ORD 9871734597). Approximately 100 tons of soil and debris were excavated and disposed as non-hazardous waste.

Analytical data obtained from liquid waste pumped from the septic crib, solids from the septic tank, and the septic tank itself indicated that the materials could be disposed of as non-hazardous waste. A waste profile was developed and, once approved, the staged waste was transported from the Site for disposal at NRC Alaska LLC (44066 Kenai Spur Highway, Kenai, AK, 99611, USEPA AKR000203984). Waste manifests and certificates of disposal are included as **Appendix B**.

6 CONCLUSION

In September 2016, the septic tank and associated crib located at the TBE Machine Shop Property were excavated and removed from the Site. In total, over 100 tons of soil and debris were removed from the Site and disposed of as non-hazardous waste in accordance with ADEC and USEPA requirements. The excavation was filled with clean backfill materials and restored as closely to pre-excavation conditions as possible. With submittal of this report, GE believes it has fulfilled all requirements for closure of the injection well permit UIC ID # AK122P5-17-13489. GE respectfully requests that documentation of permit closure be sent to:

Mr. Bob Witsell
General Electric Company
1935 Redmond Circle
Rome, Georgia 30165-3319

7 REFERENCES

Arcadis. 2015. Former Wood Crib Assessment Work Plan. May.

Arcadis. 2016a. Class V Injection Permit and Wood Crib Closure Plan. May, rev. July.

Arcadis, 2016b. ART Second Annual Monitoring Report, Former TBE Machine Shop Property. August.

TABLES



Table 1
Summary of Backfill Soil Sample Analytical Results
Class V Injection Permit and Wood Crib Closure Report
General Electric Company, Nikiski, Alaska

Location ID: Date Collected:	Units	GP-1-S 06/09/16
PCBs		
Aroclor-1016	mg/kg	0.024 U
Aroclor-1221	mg/kg	0.011 U
Aroclor-1232	mg/kg	0.011 U
Aroclor-1242	mg/kg	0.0098 U
Aroclor-1248	mg/kg	0.011 U
Aroclor-1254	mg/kg	0.0098 U
Aroclor-1260	mg/kg	0.0098 U
Volatile Organics		
m-Xylene & p-Xylene	mg/kg	0.24 U
1,1,1,2-Tetrachloroethane	mg/kg	0.048 U
1,1,1-Trichloroethane	mg/kg	0.048 U
1,1,2,2-Tetrachloroethane	mg/kg	0.012 U
1,1,2-Trichloroethane	mg/kg	0.014 U
1,1-Dichloroethane	mg/kg	0.048 U
1,1-Dichloroethene	mg/kg	0.024 U
1,1-Dichloropropene	mg/kg	0.048 U
1,2,3-Trichlorobenzene	mg/kg	0.048 U
1,2,3-Trichloropropane	mg/kg	0.048 U
1,2,4-Trichlorobenzene	mg/kg	0.048 U
1,2,4-Trimethylbenzene	mg/kg	0.048 U
1,2-Dibromo-3-chloropropane	mg/kg	0.24 U
1,2-Dibromoethane	mg/kg	0.019 U
1,2-Dichlorobenzene	mg/kg	0.048 U
1,2-Dichloroethane	mg/kg	0.019 U
1,2-Dichloroethene (cis) (DCE)	mg/kg	0.048 U
1,2-Dichloroethene (trans)	mg/kg	0.048 U
1,2-Dichloropropane	mg/kg	0.019 U
1,3,5-Trimethylbenzene	mg/kg	0.048 U
1,3-Dichlorobenzene	mg/kg	0.071 U
1,3-Dichloropropane	mg/kg	0.048 U
1,3-Dichloropropene (cis)	mg/kg	0.019 U
1,3-Dichloropropene (trans)	mg/kg	0.048 U
1,4-Dichlorobenzene	mg/kg	0.071 U
2,2-Dichloropropane	mg/kg	0.048 U
2-Chlorotoluene	mg/kg	0.048 U
2-Phenylbutane	mg/kg	0.048 U
4-Chlorotoluene	mg/kg	0.048 U
Benzene	mg/kg	0.019 U
Bromobenzene	mg/kg	0.048 U
Bromodichloromethane	mg/kg	0.048 U
Bromoform	mg/kg	0.12 U
Bromomethane (Methyl bromide)	mg/kg	0.17 U
Carbon tetrachloride	mg/kg	0.024 U
Chlorobenzene	mg/kg	0.048 U
Chlorobromomethane	mg/kg	0.048 U
Chloroethane	mg/kg	0.48 U

Table 1
Summary of Backfill Soil Sample Analytical Results
Class V Injection Permit and Wood Crib Closure Report
General Electric Company, Nikiski, Alaska

Location ID: Date Collected:	Units	GP-1-S 06/09/16
Chloroform	mg/kg	0.048 U
Chloromethane (Methyl chloride)	mg/kg	0.12 U
Cymene	mg/kg	0.048 U
Dibromochloromethane	mg/kg	0.024 U
Dibromomethane	mg/kg	0.071 U
Dichlorodifluoromethane (Freon 12)	mg/kg	0.24 U
Ethylbenzene	mg/kg	0.048 U
Hexachlorobutadiene	mg/kg	0.095 U
Isopropylbenzene (Cumene)	mg/kg	0.048 U
Methyl tert-Butyl Ether (MTBE)	mg/kg	0.048 U
Methylene chloride	mg/kg	0.03 U
Naphthalene	mg/kg	0.048 U
n-Butylbenzene	mg/kg	0.048 U
n-Propylbenzene	mg/kg	0.048 U
Styrene	mg/kg	0.048 U
tert-Butylbenzene	mg/kg	0.048 U
Tetrachloroethene (PCE)	mg/kg	0.024 U
Toluene	mg/kg	0.048 U
Trichloroethene (TCE)	mg/kg	0.029 U
Trichlorofluoromethane (Freon 11)	mg/kg	0.24 U
Vinyl chloride	mg/kg	0.019 U
Xylenes (o)	mg/kg	0.048 U
Semivolatile Organics		
3&4-Methylphenol	mg/kg	0.2 U
1,2,4-Trichlorobenzene	mg/kg	0.05 U
1,2-Dichlorobenzene	mg/kg	0.055 U
1-methyl-Naphthalene	mg/kg	0.03 U
1,3-Dichlorobenzene	mg/kg	0.05 U
1,4-Dichlorobenzene	mg/kg	0.05 U
2,4,5-Trichlorophenol	mg/kg	0.1 U
2,4,6-Trichlorophenol	mg/kg	0.15 U
2,4-Dichlorophenol	mg/kg	0.1 U
2,4-Dimethylphenol	mg/kg	0.1 U
2,4-Dinitrophenol	mg/kg	1 U*F1
2,4-Dinitrotoluene	mg/kg	0.1 U
2,6-Dinitrotoluene	mg/kg	0.1 U
2-Chloronaphthalene	mg/kg	0.02 U
2-Chlorophenol	mg/kg	0.1 U
2-Methylnaphthalene	mg/kg	0.02 U
2-Methylphenol	mg/kg	0.1 U
2-Nitroaniline	mg/kg	0.1 U
2-Nitrophenol	mg/kg	0.1 U*
3,3'-Dichlorobenzidine	mg/kg	0.2 U
3-Nitroaniline	mg/kg	0.1 U
4,6-Dinitro-2-methylphenol	mg/kg	1 UF1
4-Bromophenyl phenyl ether	mg/kg	0.1 U
4-Chloro-3-methylphenol	mg/kg	0.1 U

Table 1
Summary of Backfill Soil Sample Analytical Results
Class V Injection Permit and Wood Crib Closure Report
General Electric Company, Nikiski, Alaska

Location ID: Date Collected:	Units	GP-1-S 06/09/16
4-Chloroaniline	mg/kg	0.1 UF2
4-chlorophenyl-phenylether	mg/kg	0.1 U
4-Nitroaniline	mg/kg	0.1 U
4-Nitrophenol	mg/kg	1 U
Acenaphthene	mg/kg	0.02 U
Acenaphthylene	mg/kg	0.02 U
Anthracene	mg/kg	0.02 U
Benzo(a)anthracene	mg/kg	0.02 U
Benzo(a)pyrene	mg/kg	0.035 U
Benzo(b)fluoranthene	mg/kg	0.02 U
Benzo(g,h,i)perylene	mg/kg	0.035 U
Benzo(k)fluoranthene	mg/kg	0.055 U
Benzoic acid	mg/kg	2.5 U*F1
Benzyl alcohol	mg/kg	0.1 U
Bis(2-chloro-1-methylethyl) ether	mg/kg	0.25 U
Bis(2-chloroethoxy)methane	mg/kg	0.1 U
Bis(2-chloroethyl)ether	mg/kg	0.1 U
Bis(2-ethylhexyl)phthalate	mg/kg	0.6 U
Butyl benzyl phthalate	mg/kg	0.2 U
Carbazole	mg/kg	0.1 U
Chrysene	mg/kg	0.025 U
Dibenzo(a,h)anthracene	mg/kg	0.04 U
Dibenzofuran	mg/kg	0.1 U
Diethylphthalate	mg/kg	0.2 U
Dimethylphthalate	mg/kg	0.1 U
Di-n-butylphthalate	mg/kg	0.5 U
Di-n-octylphthalate	mg/kg	0.5 U
Fluoranthene	mg/kg	0.02 U
Fluorene	mg/kg	0.02 U
Hexachlorobenzene	mg/kg	0.05 U
Hexachlorobutadiene	mg/kg	0.05 U
Hexachlorocyclopentadiene	mg/kg	0.1 U
Hexachloroethane	mg/kg	0.1 U
Indeno(1,2,3-cd)pyrene	mg/kg	0.04 U
Isophorone	mg/kg	0.1 U
Naphthalene	mg/kg	0.02 U
Nitrobenzene	mg/kg	0.1 U
N-Nitroso-di-n-propylamine	mg/kg	0.1 U
N-Nitrosodiphenylamine	mg/kg	0.05 U
Pentachlorophenol	mg/kg	0.25 U
Phenanthrene	mg/kg	0.02 U
Phenol	mg/kg	0.1 U
Pyrene	mg/kg	0.02 U

Table 1
Summary of Backfill Soil Sample Analytical Results
Class V Injection Permit and Wood Crib Closure Report
General Electric Company, Nikiski, Alaska

Location ID: Date Collected:	Units	GP-1-S 06/09/16
Inorganics		
Arsenic	mg/kg	5.1
Barium	mg/kg	49
Cadmium	mg/kg	0.21
Chromium	mg/kg	15
Lead	mg/kg	3
Mercury	mg/kg	0.02
Selenium	mg/kg	0.93 U
Silver	mg/kg	0.19 U
Gasoline Range Organics		
Gasoline Range Organics (GRO)-C6-C10	mg/kg	5.2 U
Diesel Range Organics		
DRO (nC10-<nC25)	mg/kg	17 U
Pesticides		
4,4'-DDD	mg/kg	0.0019 U
4,4'-DDE	mg/kg	0.0019 U
4,4'-DDT	mg/kg	0.0019 U
Aldrin	mg/kg	0.00097 U
alpha-BHC	mg/kg	0.00097 U
alpha-Chlordane	mg/kg	0.00097 U
beta-BHC	mg/kg	0.0019 U
delta-BHC	mg/kg	0.00097 U
Dieldrin	mg/kg	0.0019 U
Endosulfan I	mg/kg	0.00097 U
Endosulfan II	mg/kg	0.0019 U
Endosulfan sulfate	mg/kg	0.0019 U
Endrin	mg/kg	0.0019 U
Endrin aldehyde	mg/kg	0.0019 U
Endrin ketone	mg/kg	0.0019 U
gamma-BHC (Lindane)	mg/kg	0.00097 U
gamma-Chlordane	mg/kg	0.00097 U
Heptachlor	mg/kg	0.0019 U
Heptachlor epoxide	mg/kg	0.00097 U
Methoxychlor	mg/kg	0.0097 U
Toxaphene	mg/kg	0.097 U

Table 1
Summary of Backfill Soil Sample Analytical Results
Class V Injection Permit and Wood Crib Closure Report
General Electric Company, Nikiski, Alaska

Location ID: Date Collected:	Units	GP-1-S 06/09/16
Herbicides		
2,4,5-T	mg/kg	0.13 U
2,4-DB	mg/kg	0.099 U
Dichlorprop	mg/kg	0.099 U
MCPA	mg/kg	0.099 U
Mecoprop	mg/kg	0.18 U
2,4,5-TP (Silvex)	mg/kg	0.18 U
2,4-D	mg/kg	0.12 U
4-Nitrophenol	mg/kg	0.13 U
Dalapon	mg/kg	0.18 U
Dicamba	mg/kg	0.16 U
Dinoseb	mg/kg	0.32 U
Pentachlorophenol	mg/kg	0.099 U

Notes:

mg/kg - milligrams per kilogram

U - The compound was analyzed for but not detected. The associated value is the compound quantitation limit.

* - RPD of the LCS and LCSD exceeds the control limits.

F1 - MS and/or MSD Recovery is outside acceptance limits

F2 - MS/MSD exceeds control limits.

Table 2
Summary of End-Point Sample Analytical Results
Class V Injection Permit and Wood Crib Closure Report
General Electric Company, Nikiski, Alaska

Location ID: Date Collected:		Wood Crib 1 09/30/16
Sample Name:	Units	Wood Crib 1
Semivolatile Organics		
3&4-Methylphenol	ug/kg	210 U
1,2,4-Trichlorobenzene	ug/kg	53 U
1,2-Dichlorobenzene	ug/kg	59 U
1-methyl-Naphthalene	ug/kg	32 U
1,3-Dichlorobenzene	ug/kg	53 U
1,4-Dichlorobenzene	ug/kg	53 U
2,4,5-Trichlorophenol	ug/kg	110 U
2,4,6-Trichlorophenol	ug/kg	160 U
2,4-Dichlorophenol	ug/kg	110 U
2,4-Dimethylphenol	ug/kg	110 U
2,4-Dinitrophenol	ug/kg	1,100 U
2,4-Dinitrotoluene	ug/kg	110 U
2,6-Dinitrotoluene	ug/kg	110 U
2-Chloronaphthalene	ug/kg	21 U
2-Chlorophenol	ug/kg	110 U
2-Methylnaphthalene	ug/kg	21 U
2-Methylphenol	ug/kg	110 U
2-Nitroaniline	ug/kg	110 U
2-Nitrophenol	ug/kg	110 U
3,3'-Dichlorobenzidine	ug/kg	210 U
3-Nitroaniline	ug/kg	110 U
4,6-Dinitro-2-methylphenol	ug/kg	1,100 U
4-Bromophenyl phenyl ether	ug/kg	110 U
4-Chloro-3-methylphenol	ug/kg	110 U
4-Chloroaniline	ug/kg	110 U
4-chlorophenyl-phenylether	ug/kg	110 U
4-Nitroaniline	ug/kg	110 U
4-Nitrophenol	ug/kg	1,100 U*
Acenaphthene	ug/kg	21 U
Acenaphthylene	ug/kg	21 U
Anthracene	ug/kg	21 U
Benzo(a)anthracene	ug/kg	21 U
Benzo(a)pyrene	ug/kg	37 U
Benzo(b)fluoranthene	ug/kg	21 U
Benzo(g,h,i)perylene	ug/kg	37 U
Benzo(k)fluoranthene	ug/kg	59 U
Benzoic acid	ug/kg	2,700 U
Benzyl alcohol	ug/kg	110 U
Bis(2-chloro-1-methylethyl) ether	ug/kg	270 U
Bis(2-chloroethoxy)methane	ug/kg	110 U
Bis(2-chloroethyl)ether	ug/kg	110 U
Bis(2-ethylhexyl)phthalate	ug/kg	640 U
Butyl benzyl phthalate	ug/kg	210 U
Carbazole	ug/kg	110 U
Chrysene	ug/kg	27 U
Dibenzo(a,h)anthracene	ug/kg	43 U
Dibenzofuran	ug/kg	110 U
Diethylphthalate	ug/kg	210 U
Dimethylphthalate	ug/kg	110 U
Di-n-butylphthalate	ug/kg	530 U
Di-n-octylphthalate	ug/kg	530 U
Fluoranthene	ug/kg	21 U
Fluorene	ug/kg	21 U
Hexachlorobenzene	ug/kg	53 U
Hexachlorobutadiene	ug/kg	53 U
Hexachlorocyclopentadiene	ug/kg	110 U
Hexachloroethane	ug/kg	110 U
Indeno(1,2,3-cd)pyrene	ug/kg	43 U

Table 2
Summary of End-Point Sample Analytical Results
Class V Injection Permit and Wood Crib Closure Report
General Electric Company, Nikiski, Alaska

Location ID: Date Collected:		Wood Crib 1 09/30/16
Sample Name:	Units	Wood Crib 1
Isophorone	ug/kg	110 U
Naphthalene	ug/kg	21 U
Nitrobenzene	ug/kg	110 U
N-Nitroso-di-n-propylamine	ug/kg	110 U
N-Nitrosodiphenylamine	ug/kg	53 U
Pentachlorophenol	ug/kg	270 U
Phenanthrene	ug/kg	21 U
Phenol	ug/kg	110 U
Pyrene	ug/kg	21 U
Inorganics		
Arsenic	mg/kg	4.4
Cadmium	mg/kg	0.21
Chromium	mg/kg	14
Lead	mg/kg	4.9

Notes:

mg/kg - milligrams per kilogram

ug/kg - micrograms per kilogram

U - The compound was analyzed for but not detected. The associated value is the compound quantitation limit.

* - RPD of the LCS and LCSD exceeds the control limits.

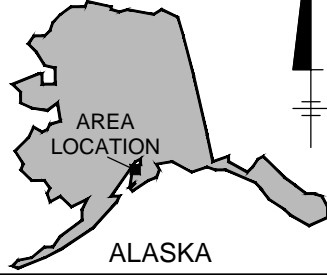
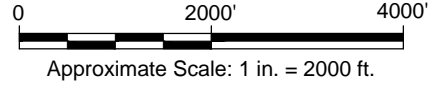
FIGURES



CITY: SYRACUSE, NY DIV: GROUP: EBC-IM/DV DBLID: L. POSENAUER PM: M. PELTON LVR: (OFF) ON: "OFF" REF: C:\ENVCAD\SYRACUSE\GE-ACT-C\18003\255.1602.00002\GE-NIKISKI_AKICLOSURE REPORT\31255ND01.dwg LAYOUT: 1 SAVED: 2/14/2017 1:24 PM ACADVER: 19.1S (LMS TECH) PAGES: 19 C:\PA-AD0BPDF PLOTSTYLE: TABLE: PLT\FULL.CTB PLOTTED: 2/14/2017 1:30 PM BY: POSENAUER, LISA

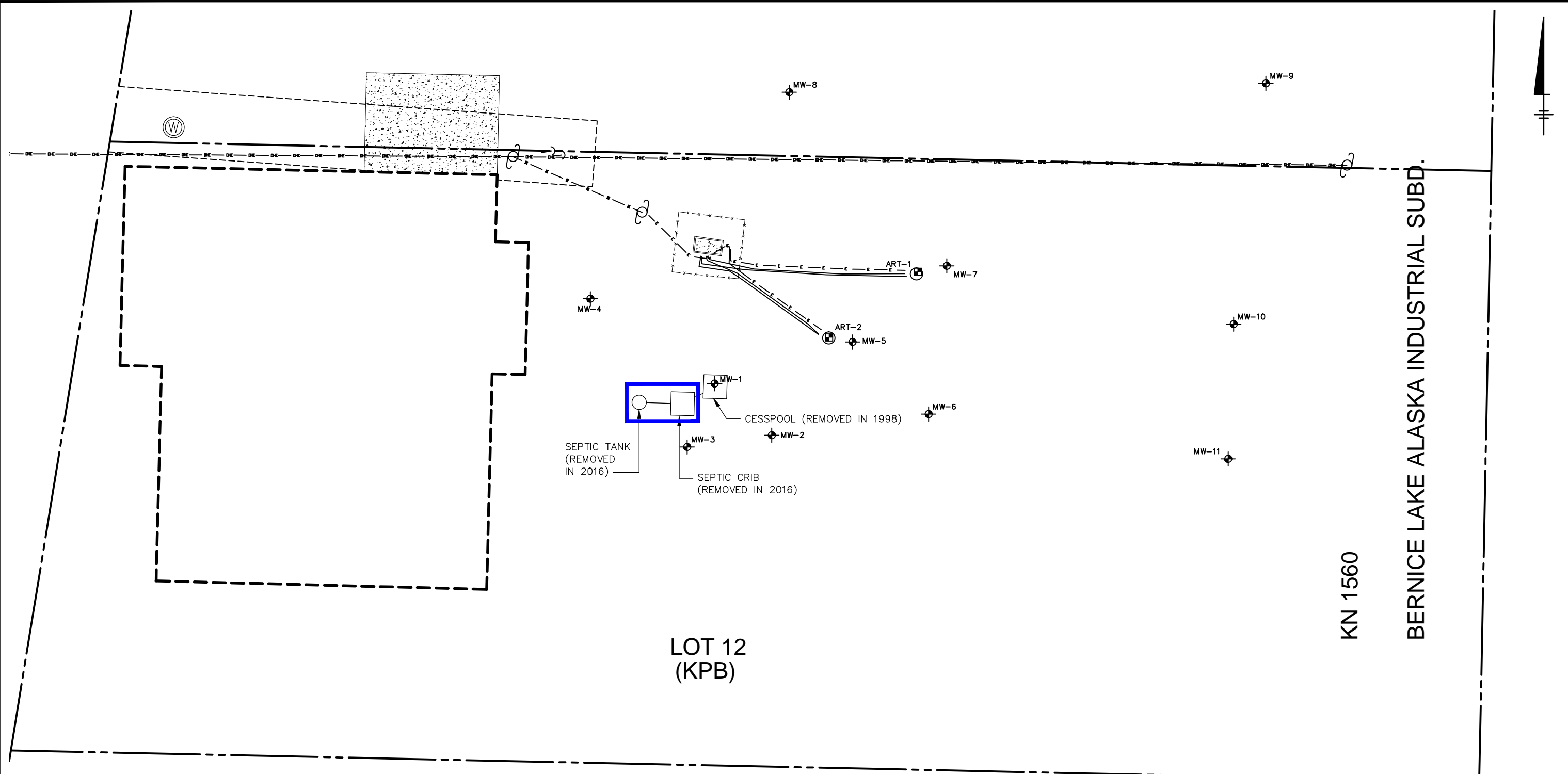


REFERENCE: BASE MAP USGS 7.5. MIN. TOPO. QUAD., KINAI C-4 NW, ALASKA, 1975, EDITED 1986.



GENERAL ELECTRIC COMPANY FORMER MACHINE SHOP NIKISKI, ALASKA CLASS V INJECTION PERMIT AND SEPTIC TANK/WOOD CRIB CLOSURE REPORT	
SITE LOCATION MAP	
	Design & Consultancy for natural and built assets
FIGURE 1	

CITY: SYRACUSE, NY DIV/GROUP: EBC/MDV DB/ID: L POSENAUER PM: M PELTON LVR: (OPTION) OFF=REF C:\ENVCAD\SYRACUSE\GE-ACT-C\B\031255.1602.0000\2\GE-NIKISKI_AK\CLOSURE REPORT\131255B02.dwg LAYOUT: 2 SAVED: 2/10/2017 10:31 AM ACADVER: 19.1S (LMS TECH) PAGES: 2 PLOTSTYLETABLE: PLOTTED: 2/10/2017 10:35 AM BY: POSENAUER, LISA



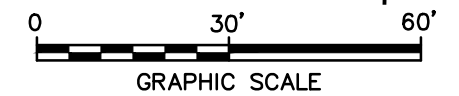
LEGEND:

- GROUNDWATER MONITORING WELL
- WATER SUPPLY WELL
- ART TREATMENT WELL
- POWER POLE
- PARCEL BOUNDARY
- LOCATION OF BUILDING REMOVED IN OCTOBER 2014
- OVERHEAD ELECTRIC
- TRENCH PATH
- AREA OF SEPTIC TANK/CRIB AND SOIL REMOVAL, SHALLOW SOILS (0-6') REUSED AS FILL

NOTES:

1. BASE MAP FEATURES SURVEY BY MCLANE CONSULTING, INC., 6/25/2014.
2. ALL LOCATIONS ARE APPROXIMATE.

(WADE OILFIELD)
LOT 13



GENERAL ELECTRIC COMPANY
FORMER MACHINE SHOP
NIKISKI, ALASKA

**CLASS V INJECTION PERMIT AND
SEPTIC TANK/WOOD CRIB CLOSURE REPORT**

SITE PLAN AND SOIL REMOVAL AREA



ARCADIS Design & Consultancy
for natural and built assets

FIGURE
2

APPENDIX A

Photographic Log



<p>Photo No. 1</p>	
<p><u>Description:</u> Base of excavation after removal of wood crib. Visibly clean soil.</p>	
<p>Photo No. 2</p>	
<p><u>Description:</u> Closeup of base of excavation below wood crib. Visibly clean soil.</p>	

<p>Photo No. 3</p>	
<p><u>Description:</u> Base of excavation after septic tank and soil removal. Visibly clean soil.</p>	

APPENDIX B

Waste Manifests and Certificates of Disposal



Appendix B

Summary of Waste Shipments
Class V Injection Permit and Wood Crib Closure Report
General Electric Company, Nikiski, Alaska

Shipment Date	Manifest Number	Container Weight (tons)
Wood Crib Soil and Debris		
9/30/2016	107178A	20.94
9/30/2016	107178B	14.65
10/14/2016	107178C	15.15
10/14/2016	107178D	18.19
10/3/2016	107178E	13.95
10/3/2016	107178F	17.20
Liquids from Wood Crib		
12/23/2016	107178G	2.85
Soilds from Septic Tank		
12/23/2016	107178G	1.50
Septic Tank Debris		
12/23/2016	107178G	0.23

NON-HAZARDOUS WASTE MANIFEST

Please Print or type (Form designed for use on elite (12 pitch) typewriter)

NON-HAZARDOUS WASTE MANIFEST		1. Generator's US EPA ID No. EXEMPT		Manifest Document No. 107178A		2. Page 1 of 3					
3. Generator's Name and Mailing Address GENERAL ELECTRIC COMPANY 1935 REDMOND CIRCLE ROME, GA 30165				GENERAL ELECTRIC 49200 KENAI SPUR HWY KENAI, AK 99611		WMXU 6032					
4. Generator's Phone 708-291-3319						TTOT 340016					
5. Transporter 1 Company Name WEAVER BROTHERS		6. US EPA ID Number AKD002848372		A. State Transporter's ID		B. Transporter 1 Phone					
7. Transporter 2 Company Name TOTEM OCEAN TRAILER EXPRESS		8. US EPA ID Number WAD070397955		C. State Transporter's ID (53) 449-8100		D. Transporter 2 Phone					
9. Designated Facility Name and Site Address COLUMBIA RIDGE RECY. & LNDFL 18177 CEDAR SPRINGS LANE ARLINGTON, OR 97812				10. US EPA ID Number ORD987173457		E. State Facility's ID					
						F. Facility's Phone (541) 454-2030					
11. WASTE DESCRIPTION						Containers		13. Total Quantity		14. Unit Wt./Vol.	
a. HM MATERIAL NOT REGULATED BY D.O.T.						No. Type		CM 86640		P	
b.											
c.											
d.											
G. Additional Descriptions for Materials Listed Above 122568OR WOOD CRIB SOIL AND DEBRIS						H. Handling Codes for Wastes Listed Above D5430					
15. Special Handling Instructions and Additional Information Shipper's Certification: This is to certify that the above-named materials are properly classified, described, packaged, marked and labeled, and are in proper condition for transportation according to the applicable regulations of the Department of Transportation											
16. GENERATOR'S CERTIFICATION: I hereby certify that the contents of this shipment are fully and accurately described and are in all respects in proper condition for transport. The materials described on this manifest are not subject to federal hazardous waste regulations.											
Printed/Typed Name Ken Terpack								Signature <i>Ken Terpack</i>		Date 09 29 2016	
17. Transporter 1 Acknowledgement of Receipt of Materials											
Printed/Typed Name Joe Appleton								Signature <i>Joe Appleton</i>		Date 9 30 16	
18. Transporter 2 Acknowledgement of Receipt of Materials											
Printed/Typed Name <i>[Signature]</i>								Signature <i>[Signature]</i>		Date 10 6 16	
19. Discrepancy Indication Space											
20. Facility Owner or Operator: Certification of receipt of the waste materials covered by this manifest, except as noted in item 19.											
Printed/Typed Name Toni Ames								Signature <i>Toni Ames</i>		Date 10 31 16	

NON-HAZARDOUS WASTE

GENERATOR

TRANSPORTER

FACILITY

UNIFORM HAZARDOUS WASTE MANIFEST (Continuation Sheet)		21. Generator ID Number EXEMPT	22. Page 2	23. Manifest Tracking Number 107778A						
24. Generator's Name GENERAL ELECTRIC 49200 KENAI SPUR HWY KENAI, AK 99611 708-291-3319										
25. Transporter <u>3</u> Company Name		ALTA LOGISTICS		WASTE NUMBER						
26. Transporter <u>4</u> Company Name		UNION PACIFIC		U.S. EPA ID NUMBER						
GENERATOR	27a. HM	27b. U.S. DOT Description (including Proper Shipping Name, Hazard Class, ID Number, and Packing Group (if any))		28. Containers		29. Total Quantity	30. Unit Wt./Vol.	31. Waste Codes		
				No.	Type					
32. Special Handling Instructions and Additional Information										
TRANSPORTER	33. Transporter <u>3</u> Acknowledgment of Receipt of Materials		Printed/Typed Name Chris Gautier		Signature 		Month Day Year 10 18 16			
	34. Transporter <u>4</u> Acknowledgment of Receipt of Materials		Printed/Typed Name CHRIS BARRIENTE		Signature 		Month Day Year 10 18 16			
DESIGNATED FACILITY	35. Discrepancy FILE									
	36. Hazardous Waste Report Management Method Codes (i.e., codes for hazardous waste treatment, disposal, and recycling systems) Toni Ames 10 31 16									

NON-HAZARDOUS WASTE MANIFEST

Please print or type (Form designed for use on elite (12 pitch) typewriter)

NON-HAZARDOUS WASTE MANIFEST		1. Generator's US EPA ID No. EXEMPT		Manifest Document No. 107178B		2. Page 1 of 3	
2. Generator's Name and Mailing Address GENERAL ELECTRIC COMPANY 1935 REDMOND CIRCLE ROME, GA 30165 706-291-3319				GENERAL ELECTRIC 49200 KENAI SPUR HWY KENAI, AK 99811		WMXU - 6340	
4. Generator's Phone						TT02340039	
5. Transporter 1 Company Name WEAVER BROTHERS		6. US EPA ID Number AKD002648372		A. State Transporter's ID		B. Transporter 1 Phone	
7. Transporter 2 Company Name TOTEM OCEAN TRAILER EXPRESS		8. US EPA ID Number WAD070397955		C. State Transporter's ID AK53 449 9100		D. Transporter 2 Phone	
9. Designated Facility Name and Site Address COLUMBIA RIDGE RECY. & LNDFL 18177 CEDAR SPRINGS LANE ARLINGTON, OR 97812				10. US EPA ID Number ORD987173457		E. State Facility's ID	
						F. Facility's Phone (541) 454-2030	
11. WASTE DESCRIPTION						13. Total Quantity	
11. WASTE DESCRIPTION						14. Unit Wt./Vol.	
a. MATERIAL NOT REGULATED BY D.O.T.						1	
						CM 93960	
b.							
c.							
d.							
G. Additional Descriptions for Materials Listed Above 122566OR WOOD CRIB SOIL AND DEBRIS						H. Handling Codes for Wastes Listed Above D5434	
15. Special Handling Instructions and Additional Information Shipper's Certification: This is to certify that the above-named materials are properly classified, described, packaged, marked and labeled, and are in proper condition for transportation according to the applicable regulations of the Department of Transportation							
16. GENERATOR'S CERTIFICATION: I hereby certify that the contents of this shipment are fully and accurately described and are in all respects in proper condition for transport. The materials described on this manifest are not subject to federal hazardous waste regulations.							
Printed/Typed Name Ken Tespack				Signature <i>[Signature]</i>		Date 09/29/2016	
17. Transporter 1 Acknowledgement of Receipt of Materials				Signature <i>[Signature]</i>		Date 9/30/16	
18. Transporter 2 Acknowledgement of Receipt of Materials				Signature <i>[Signature]</i>		Date 10/10/16 10/11/16	
19. Discrepancy Indication Space							
20. Facility Owner or Operator: Certification of receipt of the waste materials covered by this manifest, except as noted in Item 19.						Date	
Printed/Typed Name Toni Ames				Signature <i>[Signature]</i>		Date 10/31/16	

NON-HAZARDOUS WASTE

GENERATOR

TRANSPORTER

FACILITY

NON-HAZARDOUS WASTE MANIFEST

(Form designed for use on elite (12 pitch) typewriter)

NON-HAZARDOUS WASTE MANIFEST	1. Generator's US EPA ID No. EXEMPT	Manifest Document No. 107178	2. Page 1 of 3
------------------------------	--	------------------------------	----------------

3. Generator's Name and Address GENERAL ELECTRIC COMPANY 1935 REDMOND CIRCLE ROME, GA 30185	4. Generator's Phone 706-291-3319	5. Recipient's Name and Address GENERAL ELECTRIC 49200 KENAI SPUR HWY KENAI, AK 99611
--	--------------------------------------	--

6. Transporter 1 Company Name WEAVER BROTHERS	7. US EPA ID Number AKD002848372	A. State Transporter's ID
--	-------------------------------------	---------------------------

8. Transporter 2 Company Name TOTEM OCEAN TRAILER EXPRESS	9. US EPA ID Number WAD070397935	B. Transporter 1 Phone
--	-------------------------------------	------------------------

9. Destination Facility Name and Site Address COLUMBIA RIDGE RECY. & LNDFL. 18177 CEDAR SPRINGS LANE ARLINGTON, OR 97812	10. US EPA ID Number ORD987173457	C. State Transporter's Phone (503) 449-8100
---	--------------------------------------	--

		D. Transporter 2 Phone
		E. State Facility's ID
		F. Facility's Phone (541) 454-2030

11. WASTE DESCRIPTION	12. Containers		13. Total Quantity	14. Unit Wt./Vol.
	No.	Type		
a. MATERIAL NOT REGULATED BY D.O.T.	1	CM	40,000	P
b.				
c.				
d.				
e.				

15. Additional Descriptions for Materials Listed Above #225680R WOOD CRIB SOIL AND DEBRIS	16. Handling Codes for Wastes Listed Above D5430
--	---

18. Shipper's Certification: This is to certify that the above-named materials are properly classified, described, packaged, marked and labeled, and are in proper condition for transportation according to the applicable regulations of the Department of Transportation

19. GENERATOR'S CERTIFICATION: I hereby certify that the contents of this shipment are fully and accurately described and are in all respects in proper condition for transport. The materials described on this manifest are not subject to federal hazardous waste regulations.

Printed/Typed Name	Signature	Date Month Day Year

17. Transporter 1 Acknowledgement of Receipt of Materials	Signature	Date Month Day Year
Printed/Typed Name SEAN COGDILL		11/14/06

18. Transporter 2 Acknowledgement of Receipt of Materials	Signature	Date Month Day Year
Printed/Typed Name BO		10/24/06

19. Discrepancy Indication Space

20. Facility Owner or Operator: Certification of receipt of the waste materials covered by this manifest, except as noted in item 19.	Signature	Date Month Day Year
Printed/Typed Name Toni Ames		11/3/06

NON-HAZARDOUS WASTE

WMXU 200019

NON-HAZARDOUS WASTE MANIFEST

(Form designed for use on elite (12 pitch) typewriter)

NON-HAZARDOUS WASTE MANIFEST		1. Generator's US EPA ID No. EXEMPT		Manifest Document No. 107178A		2. Page 1 of 3	
3. Generator's Name and Mailing Address GENERAL ELECTRIC COMPANY 1935 REDMOND CIRCLE ROME, GA 30165		4. Generator's Phone 708-291-3319		5. US EPA ID Number AKD002848372		6. State Transporter's ID WMXU 200019	
7. Transporter 1 Company Name WEAVER BROTHERS		8. US EPA ID Number WAD070397935		9. State Transporter's ID 253 449-8100		10. Transporter 2 Phone	
11. Waste Description FM		12. Containers No. Type		13. Total Quantity		14. Unit Wt/Vol	
1. MATERIAL NOT REGULATED BY D.O.T.		1		CM		40,000 P	
15. Additional Descriptions for Materials Listed Above 122560R WOOD CRIB SOIL AND DEBRIS		16. Handling Codes for Wastes Listed Above D5430					
17. Special Handling Instructions and Additional Information Shipper's Certification: This is to certify that the above-named materials are properly classified, described, packaged, marked and labeled, and are in proper condition for transportation according to the applicable regulations of the Department of Transportation							
18. GENERATOR'S CERTIFICATION: I hereby certify that the contents of this shipment are truly and accurately described and are in all respects in proper condition for transport. The materials described on this manifest are not subject to federal hazardous waste regulations.							
19. Generator's Signature Printed/Typed Name: _____ Signature: _____				Date: _____ Month Day Year			
20. Transporter 1 Acknowledgment of Receipt of Materials Printed/Typed Name: SEAN COGDILL Signature: _____				Date: 10/14/02			
21. Transporter 2 Acknowledgment of Receipt of Materials Printed/Typed Name: BO Signature: _____				Date: 10/14/02			
22. Facility Owner or Operator: Certification of receipt of the waste materials covered by this manifest, except as noted in item 19.							
Printed/Typed Name: Toni Ames Signature: _____				Date: 10/31/02			

NON-HAZARDOUS WASTE



NON-HAZARDOUS WASTE MANIFEST

Please print or type (Form designed for use on elite (12 pitch) typewriter)

NON-HAZARDOUS WASTE MANIFEST		1. Generator's US EPA ID No. EXEMPT		Manifest Document No. 107178E	2. Page 1 of 2
3. Generator's Name and Mailing Address GENERAL ELECTRIC COMPANY 1935 REDMOND CIRCLE ROME, GA 30185		GENERAL ELECTRIC 49200 KENAI SPUR HWY KENAI, AK 99811		WMXU 6117	
4. Generator's Phone 706 291-3319				TTOZ 340102 TFOZ 340012 NO.	
5. Transporter 1 Company Name WEAVER BROTHERS		6. US EPA ID Number AKD002848372		A. State Transporter's ID	
7. Transporter 2 Company Name TOTEM OCEAN TRAILER EXPRESS		8. US EPA ID Number WADU70397955		B. Transporter 1 Phone	
9. Designated Facility Name and Site Address COLUMBIA RIDGE RECY. & LNDFL. 18177 CEDAR SPRINGS LANE ARLINGTON, OR 97812		10. US EPA ID Number ORD987173457		C. State Transporter's ID 529 440 8100	
				D. Transporter 2 Phone	
				E. State Facility's ID	
				F. Facility's Phone	
11. WASTE DESCRIPTION			Containers		13. Total Quantity
			No.	Type	14. Unit Wt./Vol.
a. MATERIAL NOT REGULATED BY D.C.T.			1	CM	P
b.					
c.					
d.					
G. Additional Descriptions for Materials Listed Above 122566OR WOOD CRIB SOIL AND DEBRIS			H. Handling Codes for Wastes Listed Above D: 872		
15. Special Handling Instructions and Additional Information Shipper's Certification, This is to certify that the above-named materials are properly classified, described, packaged, marked and labeled, and are in proper condition for transportation according to the applicable regulations of the Department of Transportation					
16. GENERATOR'S CERTIFICATION: I hereby certify that the contents of this shipment are fully and accurately described and are in all respects in proper condition for transport. The materials described on this manifest are not subject to federal hazardous waste regulations.					
Printed/Typed Name Ken Terlich of ARCADIS on behalf of GE				Signature <i>KT</i>	
				Date Month Day Year 10 03 2016	
17. Transporter 1 Acknowledgement of Receipt of Materials					
Printed/Typed Name <i>Ken Terlich</i>				Signature <i>KT</i>	
				Date Month Day Year 10 3 16	
18. Transporter 2 Acknowledgement of Receipt of Materials					
Printed/Typed Name Sam Olin				Signature <i>SO</i>	
				Date Month Day Year 10 10 16	
19. Discrepancy Indication Space					
20. Facility Owner or Operator: Certification of receipt of the waste materials covered by this manifest, except as noted in item 19.					
Printed/Typed Name Sarah Mastriona				Signature <i>Sarah Mastriona</i>	
				Date Month Day Year 10 20 16	

NON-HAZARDOUS WASTE

TRANSPORTER

TRANSPORTER

FACILITY

UNIFORM HAZARDOUS WASTE MANIFEST (Continuation Sheet)		21. Generator ID Number EXEMPT		22. Page 3	23. Manifest Tracking Number 107178E					
24. Generator's Name GENERAL ELECTRIC 49200 KENAI SPUR HWY KENAI, AK 99611 706-291-3319										
25. Transporter <u>5</u> Company Name COLUMBIA RIDGE RECY. & LNDFL.					U.S. EPA ID Number ORD987173457					
26. Transporter <u>6</u> Company Name					U.S. EPA ID Number					
GENERATOR	HM	27a. 27b. U.S. DOT Description (including Proper Shipping Name, Hazard Class, ID Number, and Packing Group (if any))			28. Containers No. Type		29. Total Quantity	30. Unit Wt./Vol	31. Waste Codes	
32. Special Handling Instructions and Additional Information										
TRANSPORTER	33. Transporter <u>5</u> Acknowledgment of Receipt of Materials				Signature		Month	Day	Year	
	Printed/Typed Name Sarah Mastroma				Sarah Mastroma		10	19	16	
DESIGNATED FACILITY	34. Transporter <u>6</u> Acknowledgment of Receipt of Materials				Signature		Month	Day	Year	
	Printed/Typed Name									
35. Discrepancy										
36. Hazardous Waste Report Management Method Codes (i.e., codes for hazardous waste treatment, disposal, and recycling systems)										

NON-HAZARDOUS WASTE MANIFEST

Please print or type (Form designed for use on elite (12 pitch) typewriter)

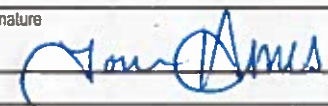
NON-HAZARDOUS WASTE MANIFEST		1. Generator's US EPA ID No. EXEMPT		Manifest Document No. 107178F	2. Page 1 of 2
3. Generator's Name and Mailing Address GENERAL ELECTRIC COMPANY 1935 REDMOND CIRCLE ROME, GA 30165		GENERAL ELECTRIC 49200 KENAI SPUR HWY KENAI, AK 99611		WMXU 6407	
4. Generator's Phone 708-291-3319				TT02 340038	
5. Transporter 1 Company Name WEAVER BROTHERS		6. US EPA ID Number AKD002848372		A. State Transporter's ID	
				B. Transporter 1 Phone	
7. Transporter 2 Company Name TOTEM OCEAN TRAILER EXPRESS		8. US EPA ID Number WADU/U387955		C. State Transporter's ID	
				D. Transporter 2 Phone (253) 449-8100	
9. Designated Facility Name and Site Address COLUMBIA RIDGE RECY. & LNDFL. 18177 CEDAR SPRINGS LANE ARLINGTON, OR 97812		10. US EPA ID Number ORD967173457		E. State Facility's ID	
				F. Facility's Phone	
11. WASTE DESCRIPTION			Containers		13. Total Quantity
			No.	Type	14. Unit Wt./Vol.
a. MATERIAL NOT REGULATED BY D.O.T.			1	CM	P
b.					
c.					
d.					
G. Additional Descriptions for Materials Listed Above 1225660R WOOD CRIB SOIL AND DEBRIS			H. Handling Codes for Wastes Listed Above D6873		
15. Special Handling Instructions and Additional Information Shipper's Certification: This is to certify that the above-named materials are properly classified, described, packaged, marked and labeled, and are in proper condition for transportation according to the applicable regulations of the Department of Transportation					
16. GENERATOR'S CERTIFICATION: I hereby certify that the contents of this shipment are fully and accurately described and are in all respects in proper condition for transport. The materials described on this manifest are not subject to federal hazardous waste regulations. Y					
Printed/Typed Name Ken Terpick of ARCADIS on behalf of GE				Signature <i>K Terpick</i>	
				Date 10/03/2016	
17. Transporter 1 Acknowledgement of Receipt of Materials					
Printed/Typed Name Norm O. v				Signature <i>Norm O. v</i>	
				Date 10/2/16	
18. Transporter 2 Acknowledgement of Receipt of Materials					
Printed/Typed Name Toddy Rosehute Hartman				Signature <i>Toddy Rosehute Hartman</i>	
				Date 10/13/16	
19. Discrepancy Indication Space					
20. Facility Owner or Operator: Certification of receipt of the waste materials covered by this manifest, except as noted in Item 19.					
Printed/Typed Name Toni Ames				Signature <i>Toni Ames</i>	
				Date 10/31/16	

NON-HAZARDOUS WASTE

GENERATOR

TRANSPORTER

FACILITY

UNIFORM HAZARDOUS WASTE MANIFEST (Continuation Sheet)		21. Generator ID Number EXEMPT		22. Page 3	23. Manifest Tracking Number 107178F		
24. Generator's Name GENERAL ELECTRIC 49200 KENAI SPUR HWY KENAI, AK 99611 706-291-3319							
25. Transporter <u>5</u> Company Name COLUMBIA RIDGE RECY. & LNDFL.					U.S. EPA ID Number ORD987173457		
26. Transporter <u>6</u> Company Name U.S. EPA ID Number							
GENERATOR	27a. HM	27b. U.S. DOT Description (including Proper Shipping Name, Hazard Class, ID Number, and Packing Group (if any))	28. Containers No. Type		29. Total Quantity	30. Unit Wt./Vol.	31. Waste Codes
32. Special Handling Instructions and Additional Information							
TRANSPORTER	33. Transporter <u>5</u> Acknowledgment of Receipt of Materials			Signature	Month	Day	Year
	Printed/Typed Name Toni Ames				10	26	16
DESIGNATED FACILITY	34. Transporter <u>6</u> Acknowledgment of Receipt of Materials			Signature	Month	Day	Year
	Printed/Typed Name						
35. Discrepancy							
36. Hazardous Waste Report Management Method Codes (i.e., codes for hazardous waste treatment, disposal, and recycling systems)							



COLUMBIA RIDGE LANDFILL & RECYCLING CENTER

18177 Cedar Springs Lane
Arlington, OR 97812
541 454 2030
541 454 3312 Fax

November 3, 2016

NRC Alaska
425 Outer Springer LP
Palmer AK 99645

CERTIFICATE OF DISPOSAL

Waste Management, Inc. dba Columbia Ridge Landfill has received NON HAZARDOUS Waste material from NRC Alaska.

Date of Disposal:	10/20/2016
Generator:	General Electric Company
Site Address:	49200 Kenai Spur Hwy
Profile:	122566OR
Container:	6117
Total Tons:	13.95
Waste Type:	Wood Crib Soil and Debris

I certify, on behalf of the above listed facility, that the above described non hazardous waste was managed in compliance with all applicable laws.

Julie Valdez

Julie Valdez
Operations Specialist



COLUMBIA RIDGE LANDFILL & RECYCLING CENTER

18177 Cedar Springs Lane
Arlington, OR 97812
541 454 2030
541 454 3312 Fax

November 3, 2016

NRC Alaska
425 Outer Springer LP
Palmer AK 99645

CERTIFICATE OF DISPOSAL

Waste Management, Inc. dba Columbia Ridge Landfill has received NON HAZARDOUS Waste material from NRC Alaska.

Date of Disposal:	10/20/2016
Generator:	General Electric Company
Site Address:	49200 Kenai Spur Hwy
Profile:	122566OR
Container:	6340
Total Tons:	14.65
Waste Type:	Wood Crib Soil and Debris

I certify, on behalf of the above listed facility, that the above described non hazardous waste was managed in compliance with all applicable laws.

Julie Valdez

Julie Valdez
Operations Specialist



COLUMBIA RIDGE LANDFILL & RECYCLING CENTER

18177 Cedar Springs Lane
Arlington, OR 97812
541 454 2030
541 454 3312 Fax

November 3, 2016

NRC Alaska
425 Outer Springer LP
Palmer AK 99645

CERTIFICATE OF DISPOSAL

Waste Management, Inc. dba Columbia Ridge Landfill has received NON HAZARDOUS Waste material from NRC Alaska.

Date of Disposal:	10/21/2016
Generator:	General Electric Company
Site Address:	49200 Kenai Spur Hwy
Profile:	122566OR
Container:	6032
Total Tons:	20.94
Waste Type:	Wood Crib Soil and Debris

I certify, on behalf of the above listed facility, that the above described non hazardous waste was managed in compliance with all applicable laws.

Julie Valdez

Julie Valdez
Operations Specialist



COLUMBIA RIDGE LANDFILL & RECYCLING CENTER

18177 Cedar Springs Lane
Arlington, OR 97812
541 454 2030
541 454 3312 Fax

November 3, 2016

NRC Alaska
425 Outer Springer LP
Palmer AK 99645

CERTIFICATE OF DISPOSAL

Waste Management, Inc. dba Columbia Ridge Landfill has received NON HAZARDOUS Waste material from NRC Alaska.

Date of Disposal:	10/27/2016
Generator:	General Electric Company
Site Address:	49200 Kenai Spur Hwy
Profile:	122566OR
Container:	6407
Total Tons:	17.20
Waste Type:	Wood Crib Soil and Debris

I certify, on behalf of the above listed facility, that the above described non hazardous waste was managed in compliance with all applicable laws.

Julie Valdez

Julie Valdez
Operations Specialist



COLUMBIA RIDGE LANDFILL & RECYCLING CENTER

18177 Cedar Springs Lane
Arlington, OR 97812
541 454 2030
541 454 3312 Fax

November 3, 2016

NRC Alaska
425 Outer Springer LP
Palmer AK 99645

CERTIFICATE OF DISPOSAL

Waste Management, Inc. dba Columbia Ridge Landfill has received NON HAZARDOUS Waste material from NRC Alaska.

Date of Disposal:	10/28/2016
Generator:	General Electric Company
Site Address:	49200 Kenai Spur Hwy
Profile:	122566OR
Container:	200019
Total Tons:	18.19
Waste Type:	Wood Crib Soil and Debris

I certify, on behalf of the above listed facility, that the above described non hazardous waste was managed in compliance with all applicable laws.

Julie Valdez

Julie Valdez
Operations Specialist



COLUMBIA RIDGE LANDFILL & RECYCLING CENTER

18177 Cedar Springs Lane
Arlington, OR 97812
541 454 2030
541 454 3312 Fax

November 3, 2016

NRC Alaska
425 Outer Springer LP
Palmer AK 99645

CERTIFICATE OF DISPOSAL

Waste Management, Inc. dba Columbia Ridge Landfill has received NON HAZARDOUS Waste material from NRC Alaska.

Date of Disposal:	11/1/2016
Generator:	General Electric Company
Site Address:	49200 Kenai Spur Hwy
Profile:	122566OR
Container:	200103
Total Tons:	15.15
Waste Type:	Wood Crib Soil and Debris

I certify, on behalf of the above listed facility, that the above described non hazardous waste was managed in compliance with all applicable laws.

Julie Valdez

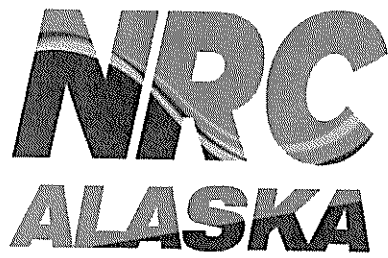
Julie Valdez
Operations Specialist

NON-HAZARDOUS WASTE MANIFEST

Please print or type (Form designed for use on elite (12 pitch) typewriter)

NON-HAZARDOUS WASTE MANIFEST		1. Generator's US EPA ID No. EXEMPT		Manifest Document No. 107178G		2. Page 1 of 1	
3. Generator's Name and Mailing Address GENERAL ELECTRIC COMPANY 1935 REDMOND CIRCLE ROME, GA 30165				GENERAL ELECTRIC 49200 KENAI SPUR HWY KENAI, AK 99511			
4. Generator's Phone (919) 415-2308							
5. Transporter 1 Company Name NRC ALASKA LLC		6. US EPA ID Number AKR000004184		A. State Transporter's ID AK07 395 4600		B. Transporter 1 Phone	
7. Transporter 2 Company Name		8. US EPA ID Number		C. State Transporter's ID		D. Transporter 2 Phone	
9. Designated Facility Name and Site Address NRC ALASKA LLC 44066 KENAI SPUR HIGHWAY KENAI, AK 99511		10. US EPA ID Number AKR000203984		E. State Facility's ID		F. Facility's Phone (907) 395-4600	
11. WASTE DESCRIPTION				Containers		13. Total Quantity	14. Unit Wt./Vol.
				No. Type			
a. Material Not Regulated by DOT				6 DM		3600	P
b. Material Not Regulated by DOT				3 TP		5700	P
c. Material Not Regulated by DOT				1 BA		450	P
d.							
G. Additional Descriptions for Materials Listed Above				H. Handling Codes for Wastes Listed Above			
1) EA0708 SOLIDS FROM COLLECTION TANK				D8922			
2) EA0301 POL CONTAMINATED CRIB WATERS GALLONS 700							
3) EA0505 POLY TANK DEBRIS, PLASTICS							
15. Special Handling Instructions and Additional Information Shipper's Certification: This is to certify that the above-named materials are properly classified, described, packaged, marked and labeled, and are in proper condition for transportation according to the applicable regulations of the Department of Transportation							
16. GENERATOR'S CERTIFICATION: I hereby certify that the contents of this shipment are fully and accurately described and are in all respects in proper condition for transport. The materials described on this manifest are not subject to federal hazardous waste regulations.							
Printed/Typed Name * Bob Witsell				Signature * Bob Witsell		Date 12/23/16	
17. Transporter 1 Acknowledgement of Receipt of Materials				Signature		Date	
Printed/Typed Name				Signature		Month Day Year	
18. Transporter 2 Acknowledgement of Receipt of Materials				Signature		Date	
Printed/Typed Name				Signature		Month Day Year	
19. Discrepancy Indication Space							
20. Facility Owner or Operator: Certification of receipt of the waste materials covered by this manifest, except as noted in item 19.							
Printed/Typed Name				Signature Michael Williams		Date 1/19/17	

NON-HAZARDOUS WASTE GENERATOR



CERTIFICATE OF DISPOSAL/RECYCLE

GENERATOR: GENERAL ELECTRIC
49200 KENAI SPUR HWY
KENAI, AK 99611

DISPOSAL FACILITY: NRC ALASKA LLC
44066 KENAI SPUR HIGHWAY
KENAI, AK 99611

EPA ID NUMBER: EXEMPT
MANIFEST/DOCUMENT #: 107178G
DATE OF DISPOSAL/RECYCLE: DEC-23-2016

<u>LINE</u>	<u>WASTE DESCRIPTION</u>	<u>CONTAINERS</u>	<u>TYPE</u>	<u>QUANTITY</u>	<u>UOM</u>
1	SOLIDS FROM COLLECTION TANK	6	DM	3000	P
2	POL CONTAMINATED CRIB WATERS	3	TP	5700	P
3	POLY TANK DEBRIS, PLASTICS	1	BA	450	P

I certify, on behalf of the above listed treatment facility, that to the best of my knowledge, the above described waste was managed in compliance with all applicable laws, regulations, permits and licenses on the date listed above.

PREPARED BY: _____

SIGNATURE: Michael Williams DATE: 1/9/2017

Arcadis U.S., Inc.

801 Corporate Center Drive

Suite 300

Raleigh, North Carolina 27607

Tel 919 854 1282

Fax 919 854 5448

www.arcadis.com

A decorative graphic consisting of three thin orange lines: one horizontal line extending across the width of the page, and two parallel diagonal lines extending from the bottom left towards the top right.