

**From:** [Gilfilian, Bob](#)  
**To:** [Campbell, Peter C \(DEC\)](#)  
**Cc:** [Gilfilian, Bob](#); [Monson, Danny](#); [Zidek, Michael](#); [Petre, Leslie \(DOT sponsored\)](#)  
**Subject:** Include Sampling of MW-30 during annual GWM event at Speedway Store 5313 (former Tesoro 2GoMart 101/IFC) Fairbanks, Alaska  
**Date:** Tuesday, August 31, 2021 2:17:57 PM  
**Attachments:** [FIG02 Site Plan with Analytical Results.pdf](#)

---

Hello Pete,

This email is a follow up to our conversation held last week regarding the future sampling of an existing monitoring well located to the north of the road easement/right-of-way that lies to the north of the subject site. You requested Stantec to check into the possibility of sampling a well downgradient of our site that has not been sampled for several years.

Attached is a site plan (Figure 2) that shows existing monitor wells located in the vicinity of the subject site. Specifically, the well identified as “MW 30” is a good candidate to check the potential migration of the dissolved petroleum contaminated plume associated with the Speedway site. This particular well is located in the parking lot of the Craig Equipment store on Lot 22-A Leasure Subdivision. This well was sampled and tested in 2003/2004 and found to be free (non-detected) of petroleum contaminates as summarized in the following historical data table:

**Monitoring Well MW-30**

| Date       | Benzene (mg/L) | GRO (mg/L) | DRO (mg/L) | Product Elevation (feet) | Measured GW Elevation (feet) | Corrected GW Elevation (feet) |
|------------|----------------|------------|------------|--------------------------|------------------------------|-------------------------------|
| 16-Oct-03  | U              | U          | U          | NA                       | 431.98                       | NA                            |
| 24-Nov-03  | NS             | NS         | NS         | NA                       | 430.74                       | NA                            |
| 10-Feb-04  | NS             | NS         | NS         | NA                       | 429.98                       | NA                            |
| 03-May-04  | U              | U          | U          | NA                       | 430.31                       | NA                            |
| 18-Aug-04  | NS             | NS         | NS         | NA                       | NM                           | NA                            |
| 08-Nov-04  | NS             | NS         | NS         | NA                       | 429.70                       | NA                            |
| 01-Apr-05  | NS             | NS         | NS         | NA                       | 428.69                       | NA                            |
| 27-Sep-05  | NS             | NS         | NS         | NA                       | NM                           | NA                            |
| 22-Oct-20  | NS             | NS         | NS         | NA                       | NM                           | NA                            |
| <b>GCL</b> | <b>0.0046</b>  | <b>2.2</b> | <b>1.5</b> | <b>NA</b>                | <b>NA</b>                    | <b>NA</b>                     |

Not sampled Sept. 27, 2005 to October 22, 2020

This past July, I visited the project site with our Fairbanks field staff and

measured the water level in MW 30 and found the well to be in fair condition but needs some repair work on the protective well cover. The well should be accessible for sampling. We will contact the property owners of Craig Equipment to obtain their permission to access and sample the well. We do not anticipate any issues with the property owners. The well will be sampled for the standard analyses presented in the approved 2021 Work Plan for this site. We plan to sample and test MW 30 as part of our annual GWM event that is scheduled to be completed in October of this year.

Please respond to this email message as to your concurrence with inclusion of MW 30 as part of the upcoming annual GWM event at this site.

Also, feel free to contact me if you have any questions regarding this matter.

Thank you,  
Bob

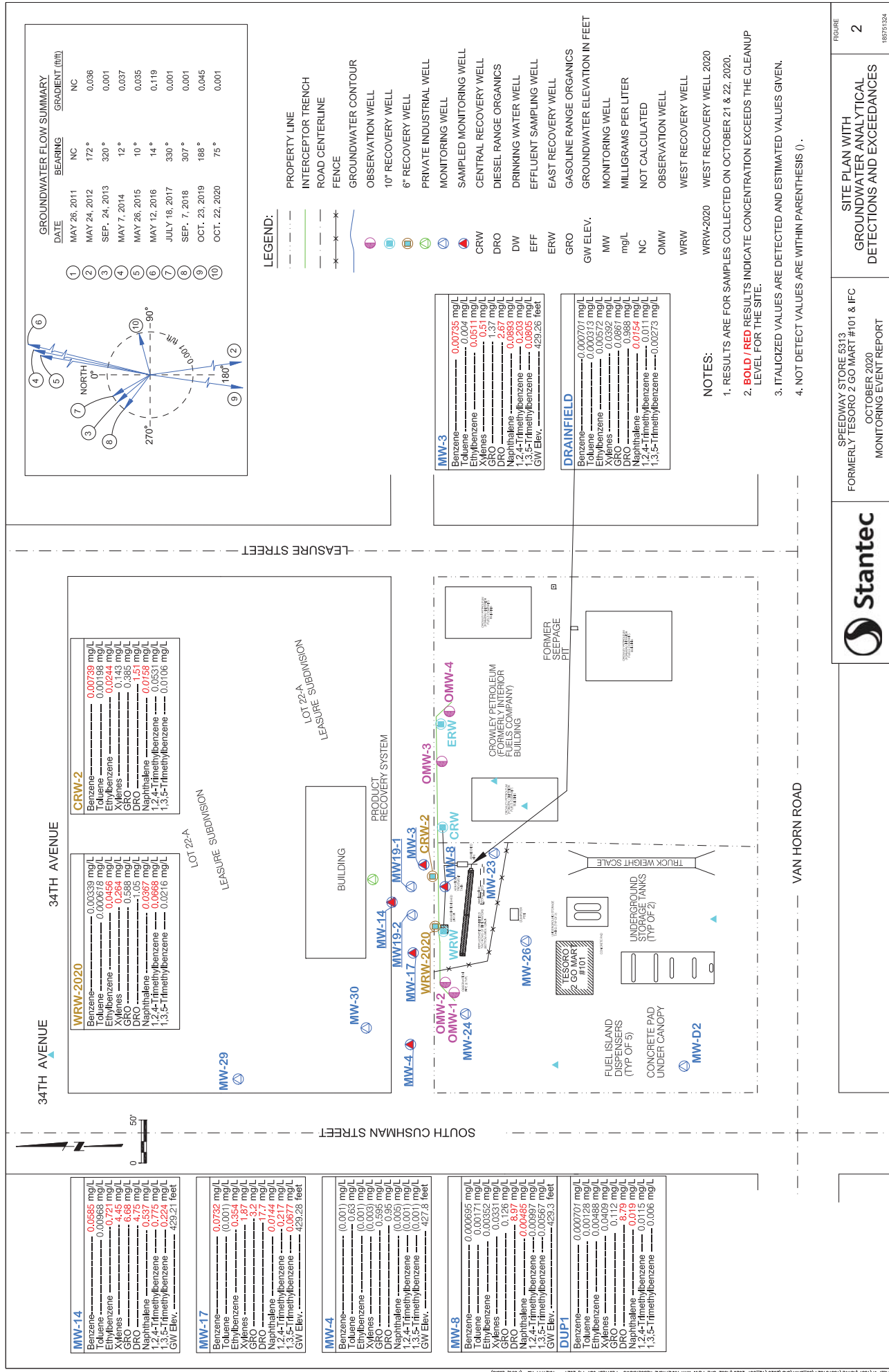
**Robert (Bob) Gilfilian PE**  
Senior Principal Civil Engineer

Direct: 907-227-9883  
[bob.gilfilian@stantec.com](mailto:bob.gilfilian@stantec.com)

Stantec  
725 East Fireweed Lane Suite 200  
Anchorage AK 99503-2245

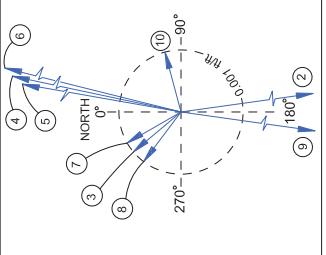


The content of this email is the confidential property of Stantec and should not be copied, modified, retransmitted, or used for any purpose except with Stantec's written authorization. If you are not the intended recipient, please delete all copies and notify us immediately.



**GROUNDWATER FLOW SUMMARY**

| DATE          | BEARING | GRADIENT (ft/ft) |
|---------------|---------|------------------|
| MAY 26, 2011  | NC      | NC               |
| MAY 24, 2012  | 172°    | 0.036            |
| SEP. 24, 2013 | 320°    | 0.001            |
| MAY 7, 2014   | 12°     | 0.037            |
| MAY 26, 2015  | 10°     | 0.035            |
| MAY 12, 2016  | 14°     | 0.119            |
| JULY 18, 2017 | 330°    | 0.001            |
| SEP. 7, 2018  | 307°    | 0.001            |
| OCT. 23, 2019 | 188°    | 0.045            |
| OCT. 22, 2020 | 75°     | 0.001            |



- LEGEND:**
- PROPERTY LINE
  - INTERCEPT TRENCH
  - ROAD CENTERLINE
  - FENCE
  - GROUNDWATER CONTOUR
  - OBSERVATION WELL
  - 10" RECOVERY WELL
  - 6" RECOVERY WELL
  - PRIVATE INDUSTRIAL WELL
  - MONITORING WELL
  - SAMPLED MONITORING WELL
  - CENTRAL RECOVERY WELL
  - DIESEL RANGE ORGANICS
  - DRINKING WATER WELL
  - EFFLUENT SAMPLING WELL
  - EAST RECOVERY WELL
  - GASOLINE RANGE ORGANICS
  - GROUNDWATER ELEVATION IN FEET
  - MONITORING WELL
  - MILLIGRAMS PER LITER
  - NC NOT CALCULATED
  - OMW OBSERVATION WELL
  - WRW WEST RECOVERY WELL

**MW-3**

|                        |              |
|------------------------|--------------|
| Benzene                | 0.00735 mg/L |
| Toluene                | 0.004 mg/L   |
| Ethylbenzene           | 0.0511 mg/L  |
| Xylenes                | 0.37 mg/L    |
| DRO                    | 2.67 mg/L    |
| Naphthalene            | 0.0693 mg/L  |
| 1,2,4-Trimethylbenzene | 0.203 mg/L   |
| 1,3,5-Trimethylbenzene | 0.066 mg/L   |
| GW Elev.               | 429.26 feet  |

**DRAINFIELD**

|                        |              |
|------------------------|--------------|
| Benzene                | 0.00701 mg/L |
| Toluene                | 0.00312 mg/L |
| Ethylbenzene           | 0.00572 mg/L |
| Xylenes                | 0.0392 mg/L  |
| GRO                    | 0.0667 mg/L  |
| DRO                    | 0.958 mg/L   |
| 1,2,4-Trimethylbenzene | 0.011 mg/L   |
| 1,3,5-Trimethylbenzene | 0.00273 mg/L |

- NOTES:**
- RESULTS ARE FOR SAMPLES COLLECTED ON OCTOBER 21 & 22, 2020.
  - BOLD / RED** RESULTS INDICATE CONCENTRATION EXCEEDS THE CLEANUP LEVEL FOR THE SITE.
  - ITALICIZED VALUES ARE DETECTED AND ESTIMATED VALUES GIVEN.
  - NOT DETECT VALUES ARE WITHIN PARENTHESIS ( ).

**WFRW-2020**

|                        |               |
|------------------------|---------------|
| Benzene                | 0.00339 mg/L  |
| Toluene                | 0.000678 mg/L |
| Ethylbenzene           | 0.0456 mg/L   |
| Xylenes                | 0.284 mg/L    |
| DRO                    | 1.05 mg/L     |
| Naphthalene            | 0.0367 mg/L   |
| 1,2,4-Trimethylbenzene | 0.0668 mg/L   |
| 1,3,5-Trimethylbenzene | 0.0216 mg/L   |

**CRW-2**

|                        |              |
|------------------------|--------------|
| Benzene                | 0.00739 mg/L |
| Toluene                | 0.00198 mg/L |
| Ethylbenzene           | 0.0244 mg/L  |
| Xylenes                | 0.145 mg/L   |
| DRO                    | 1.51 mg/L    |
| Naphthalene            | 0.0156 mg/L  |
| 1,2,4-Trimethylbenzene | 0.0531 mg/L  |
| 1,3,5-Trimethylbenzene | 0.0106 mg/L  |

**MW-14**

|                        |              |
|------------------------|--------------|
| Benzene                | 0.0685 mg/L  |
| Toluene                | 0.00968 mg/L |
| Ethylbenzene           | 0.721 mg/L   |
| Xylenes                | 4.45 mg/L    |
| DRO                    | 6.75 mg/L    |
| Naphthalene            | 0.537 mg/L   |
| 1,2,4-Trimethylbenzene | 0.775 mg/L   |
| 1,3,5-Trimethylbenzene | 0.224 mg/L   |
| GW Elev.               | 429.21 feet  |

**MW-17**

|                        |              |
|------------------------|--------------|
| Benzene                | 0.0729 mg/L  |
| Toluene                | (0.001) mg/L |
| Ethylbenzene           | 0.354 mg/L   |
| Xylenes                | 1.87 mg/L    |
| GRO                    | 3.2 mg/L     |
| DRO                    | 17.7 mg/L    |
| 1,2,4-Trimethylbenzene | 0.217 mg/L   |
| 1,3,5-Trimethylbenzene | 0.0677 mg/L  |
| GW Elev.               | 429.28 feet  |

**MW-4**

|                        |              |
|------------------------|--------------|
| Benzene                | (0.001) mg/L |
| Toluene                | 0.63 mg/L    |
| Ethylbenzene           | (0.001) mg/L |
| Xylenes                | (0.001) mg/L |
| DRO                    | 0.595 mg/L   |
| Naphthalene            | (0.005) mg/L |
| 1,2,4-Trimethylbenzene | (0.001) mg/L |
| 1,3,5-Trimethylbenzene | (0.001) mg/L |
| GW Elev.               | 427.8 feet   |

**MW-8**

|                        |               |
|------------------------|---------------|
| Benzene                | 0.000695 mg/L |
| Toluene                | 0.00171 mg/L  |
| Ethylbenzene           | 0.00352 mg/L  |
| Xylenes                | 0.031 mg/L    |
| DRO                    | 0.36 mg/L     |
| Naphthalene            | 0.89 mg/L     |
| 1,2,4-Trimethylbenzene | 0.0485 mg/L   |
| 1,3,5-Trimethylbenzene | 0.00997 mg/L  |
| GW Elev.               | 0.0567 mg/L   |

**DUP1**

|                        |               |
|------------------------|---------------|
| Benzene                | 0.000701 mg/L |
| Toluene                | 0.00128 mg/L  |
| Ethylbenzene           | 0.00488 mg/L  |
| Xylenes                | 0.0409 mg/L   |
| DRO                    | 0.919 mg/L    |
| Naphthalene            | 0.719 mg/L    |
| 1,2,4-Trimethylbenzene | 0.0115 mg/L   |
| 1,3,5-Trimethylbenzene | 0.006 mg/L    |