

# TAURIAINEN ENGINEERING & TESTING

35186 Spur Hwy Soldotna, AK 99669 (907)262-4624 FAX 262-5777 engineeringalaska@gci.net

## MEMORANDUM

Date: 12 Dec 2018

To: Pete Campbell, ADEC

Copy: Donald Jack  
E-mail: [donaldjack5@yahoo.com](mailto:donaldjack5@yahoo.com)

Donald Mathiason  
E-mail: [damroofing@yahoo.com](mailto:damroofing@yahoo.com)

From: Clayton Spitler, Project Engineer

Subject: Former Coastal Drilling Site, ADEC File #2333.38.013  
Hayward Hill Sub #3 Lots 4-A1 and 4-D1  
Request Final Approval of Completed Work Plan  
1 Page + Attachments

15117



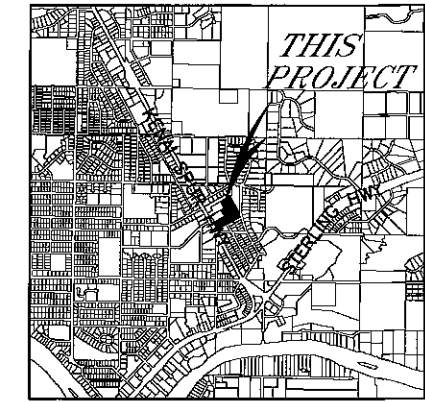
We request Final Approval of Completed Work Plan. On 4 Oct 2016, ADEC issued Approval to Construct the Covered Pit Cap (Work Plan) at subject site. On 30 June 2017 we requested Approval of Modifications to Previously Approved Work Plan, which ADEC approved the same day. Construction of the Covered Pit Cap has been completed in general accordance with approved Work Plan. Asphalt cement concrete (ACC) cap was constructed in Oct 2017. We received surveyor's confirmation of required ACC slope on 29 Nov 2018. See attached Record Drawings for more information.

Based on the information provided, we recommend Final Approval of Completed Work Plan be granted. Please contact our office if you have any questions.

*End of Memo Text*




Attachments:  
Record Drawings (2 pages)

S:\PROJECTS\15\117 Hayward Hill-Coastal Drilling\ADEC request FA.wpd



VICINITY MAP  
SCALE: 1" = 1 MILE

LEGEND

-  WATER WELL
-  MONITOR WELL
-  FENCE

NOTES:

1. THIS DRAWING BASED ON 2009 MCLANE CONSULTING AND 2014 SEGESSER SITE SURVEYS AND 2016 THROUGH 2018 SITE OBSERVATION.
2. CAUTION- EXISTING UNDERGROUND PIPELINE AND UTILITIES ARE NOT SHOWN ON THIS DRAWING.

RECORD DRAWING

This record drawing was prepared based on our observation and contractor furnished information. It represents the work as constructed, however, we do not guarantee accuracy or completeness of information contained herein. Any use of this drawing after this date shall be for information and record purposes only, and not for construction.

Tauriainen Engineering & Testing, Inc.

Date 13 Dec '18

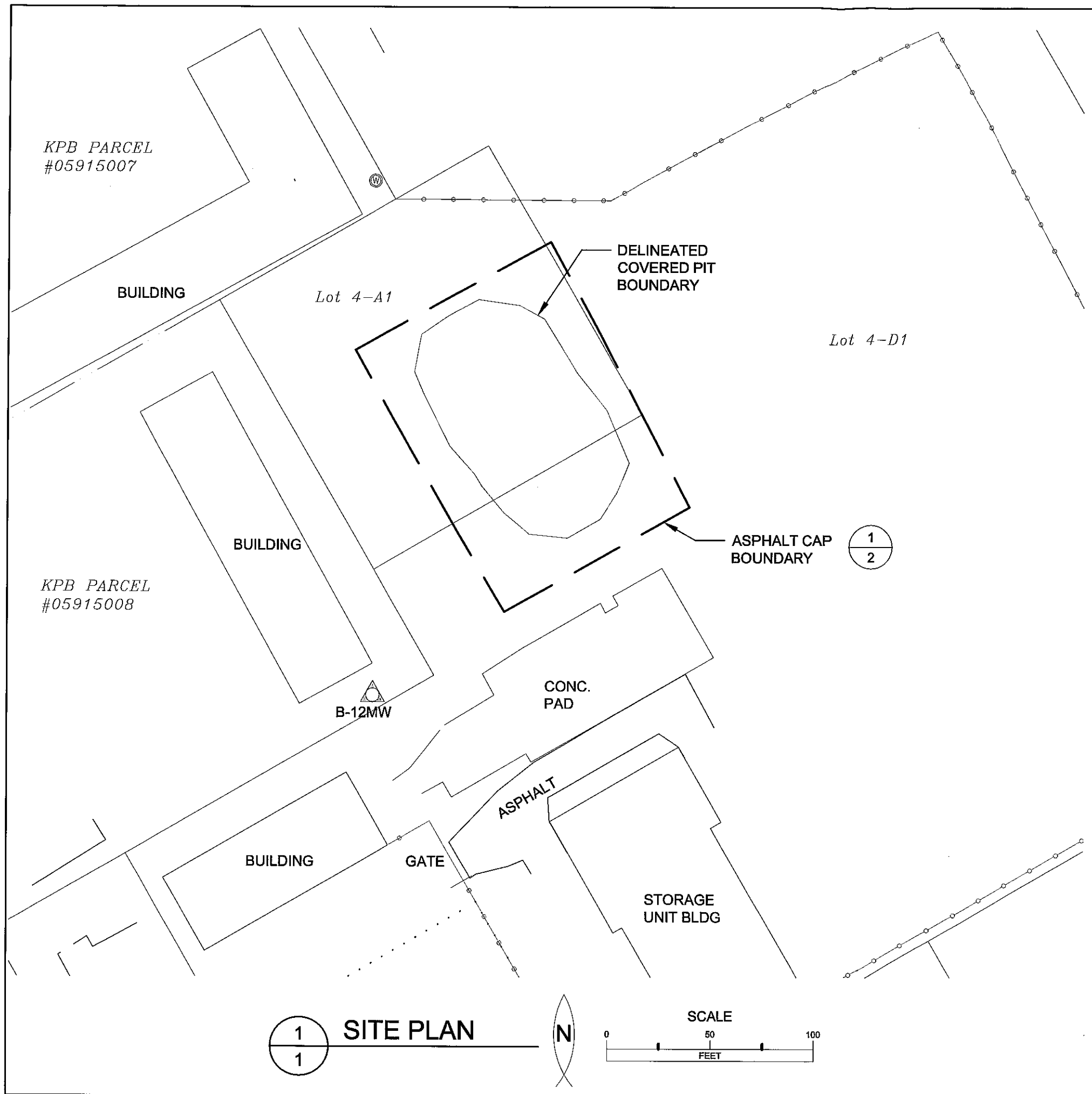


FORMER COASTAL DRILLING SITE  
SOLDOTNA, ALASKA

35186 Spur Hwy Soldotna, AK 99669 TEL (907)282-4824 FAX 262-5777 EMAIL [engineering@taur.com](mailto:engineering@taur.com)  
**TAURIAINEN ENGINEERING & TESTING**

DATE	DEC 2018
DRAWN	CS/HW
CHECKED	MT
FILE NAME	rdSHEET 1
PROJ#	15117

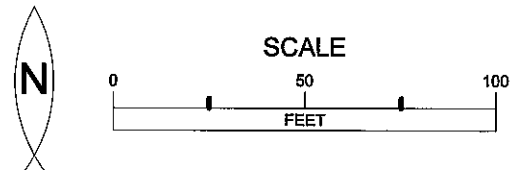
SHEET  
**1**  
OF 2



KPB PARCEL #05915007

KPB PARCEL #05915008

**1** SITE PLAN **1**

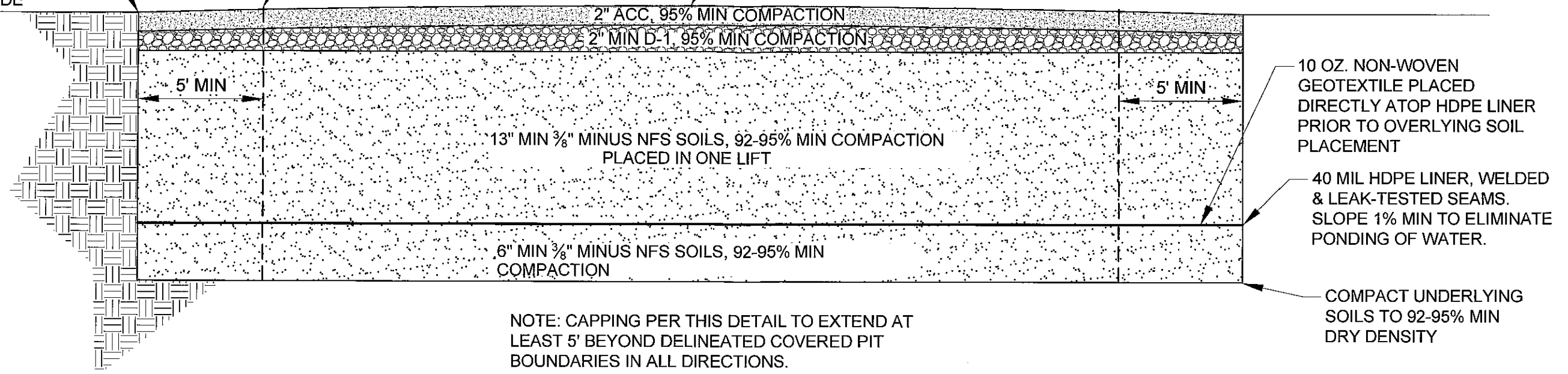


SMOOTH TRANSITIONS AT ACC EDGES TO REDUCE RISK OF SNOWPLOW DAMAGE

DELINEATED COVERED PIT BOUNDARY

SLOPE SURFACE OF D-1 AND ACC 1% MIN TO ELIMINATE PONDING OF WATER OVER CAPPED AREA

FINISH GRADE



NOTE: CAPPING PER THIS DETAIL TO EXTEND AT LEAST 5' BEYOND DELINEATED COVERED PIT BOUNDARIES IN ALL DIRECTIONS.

1 COVERED PIT CAP - SECTION  
2 SCALE: NTS

CONSTRUCTION SPECIFICATIONS

1. HDPE seam sealing must be performed in accordance w/ HDPE liner manufacturer's guidelines. Photo identification of workers (driver's license or other photo identification) must be produced.
2. Soils placed for construction of pit cap shall be compacted to at least 92-95% minimum dry density. Nuclear densometer tests shall be conducted at 1 test per 3000 square feet minimum on each soil lift.
3. Prior to placement of HDPE liner, an engineering field survey shall be conducted to ensure 1% minimum slope on prepared soil.
4. Placement of 13" minimum of 3/8" minus non-frost-susceptible (NFS) soil atop HDPE liner shall be conducted in one lift in a manner which ensures liner is not damaged by soil transport and heavy equipment. 3/8" minus NFS soils atop HDPE liner shall be placed while pushing soil in front of heavy equipment while maintaining at least 13" of soil between heavy equipment track/tires and HDPE liner at all times. HDPE liner shall be protected from concentrated track/tire pressure and movements. Contractor shall meet with engineer prior to any soil placement atop HDPE liner to ensure all construction staff are aware of required soil placement methods atop HDPE liner. Engineer shall monitor soil placement atop HDPE liner.
5. Following placement of 13" minimum of 3/8" minus NFS soil atop HDPE liner, an engineering field survey shall be conducted to ensure proper depth (13" minimum) and 1% minimum slope on prepared soil.
6. Contractor shall provide identification of source of 3/8" minus NFS soil and confirmation by sieve analysis that 100% of particles larger than 3/8" have been removed via screening, and soil meets NFS standards (less than 6% passing #200 sieve).
7. Hard soled boot/shoe traffic on exposed HDPE liner is prohibited. Only plastic tools and implements may be allowed on the HDPE liner. Use of steel tools is prohibited within the cap area during or after placement of HDPE liner until at least 13" of soil is placed over liner. Any steel sharp-edged tools or equipment necessary for HDPE liner seam sealing must be shielded from direct contact with HDPE liner with a protective barrier such as an additional transportable sheet of HDPE liner or felt protective fabric.
8. HDPE liner installation and seaming per HDPE liner supplier/contractor Installation Quality Assurance Manual

RECORD DRAWING

This record drawing was prepared based on our observation and contractor furnished information. It represents the work as constructed, however, we do not guarantee accuracy or completeness of information contained herein. Any use of this drawing after this date shall be for information and record purposes only, and not for construction.

Tauriainen Engineering & Testing, Inc.

Date: 13 Dec 18



COVERED PIT CAPPING DETAILS

FORMER COASTAL DRILLING SITE SOLDOTNA, ALASKA

35186 Spur Hwy Soldotna, AK 99669 (907)262-4624 FAX 262-5777 engineering@taur.com

DATE DEC 2018  
DRAWN CS/HW  
CHECKED MT  
FILE NAME rdSheet2  
PROJ# 15117

SHEET

2

OF 2