



Michael D. Travis, P.E.
Principal
3305 Arctic Boulevard, Suite 102
Anchorage, Alaska 99503

Phone: (907) 522-4337
Fax: (907) 522-4313

Laurence A. Peterson
Operations Manager
329 2nd Street
Fairbanks, Alaska 99701

Phone: (907) 455-7225
Fax: (907) 455-7228

January 2, 2020
1128-36

Golden Valley Electric Association
758 Illinois Street
Fairbanks, Alaska 99701

Attention: Mr. Mick J. Neary
Environmental Health Specialist, GVEA

Dear Mr. Neary:

Travis/Peterson Environmental Consulting, Inc. (TPECI) is pleased to provide you with this letter report summarizing the data collected from the pressure transducers installed at the Golden Valley Electric Association (GVEA) BESS Facility site (Figure 1).

Scope

The scope of work for this project was limited to the installation and monitoring of barometrically-compensated pressure transducers into three monitoring wells on the subject property. The data was periodically downloaded by TPECI personnel on site at each well location (Field Notes). GVEA completed their own surveying of the monitoring wells located on the subject property. The results of the survey are attached.

Pressure Transducer Locations

TPECI personnel installed data loggers in wells MW-1, MW-11, and MW-20 (Figure 2).

Equipment

TPECI utilized three Aquistar™ PT2X Pressure/Temperature Smart Sensors from GeoTech Environmental equipment suppliers in Denver, Colorado. The Aquistar™ PT2X pressure transducers are barometrically compensated and do not need an external barometer installed.

Methods

TPECI employees installed three Aquistar™ PT2X Pressure/Temperature Smart Sensors (data loggers) in wells on the subject property on November 15, 2018. These data loggers were left in place until December 2, 2019. During this time the data loggers recorded water pressure in each of the chosen wells once daily. The water pressure data from each well was then used to calculate the height of the water above the sensor. TPECI employees then compared this data to the surveyed elevations of the wells to determine the elevation of the water table at any given data point. The elevation data from multiple wells was then used to calculate the groundwater flow direction and gradient beneath the subject property.

Well Survey Results

GVEA conducted a survey of the monitoring wells located on the subject property on December 6, 2019. The data produced during this survey was used to convert the water pressure data collected from the data loggers into elevation data. See attached excel spreadsheets for the results of the survey.

Transducer Study

TPECI employees installed transducers in wells MW-1, MW-11, and MW-20 on November 15, 2018 and removed on December 2, 2019. TPECI employees retrieved information from each transducer on the following dates: January 14, 2019, February 20, 2019, March 22, 2019, April 22, 2019, July 10, 2019, September 4, 2019, and December 2, 2019.

The transducer in well MW-1 failed twice during the study. The first-time started on April 30, 2019 lasting through July 10, 2019. The second time the transducer in well MW-1 failed was September 4, 2019 lasting through December 2, 2019 when it was removed. TPECI believes the data collection period was sufficient for the purposes of this study.

Data Discussion

The raw data retrieved from the transducers was converted from feet of water above the sensor into elevation data. Data obtained from manual groundwater depth measurements was then used to check the data to ensure the data recorded by the instrument matched with manual observations.

Gradient and Flow Summary

The calculated groundwater gradient beneath the subject property varied between 0.019535524 and 0.028842717. The average gradient was 0.021239455. The calculated groundwater flow direction beneath the subject property varied between 151.2072862° and 153.3328494°. The average groundwater flow direction was 151.5029413° (See attached data sheets).

Conclusions

Based on the data obtained during the BESS Facility transducer study, the groundwater flow direction is pre-dominantly northwest. There is very little seasonal variation, the total range is 2°, meaning flow direction is fairly consistent year-round. Groundwater gradient averaged 0.021239455, with a maximum gradient of 0.028842717 and a minimum gradient of 0.019535524.

Sincerely,



Michaela McGee
TPECI Staff Scientist

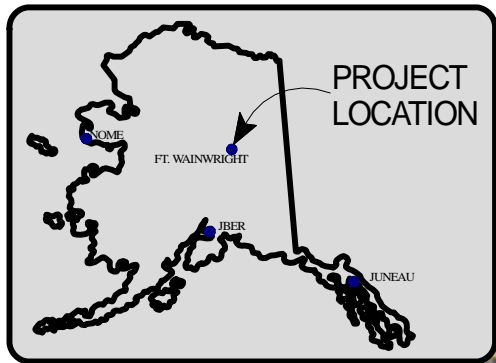
Attachments:

Figures 1 & 2

Field Notes

Transducer and Survey Data Tables

Survey Data



TRAVIS/PETERSON ENVIRONMENTAL CONSULTING, INC.
 329 2ND STREET
 FAIRBANKS, ALASKA 99701

GOLDEN VALLEY ELECTRIC ASSOCIATION
 ENERGY COATINGS / NORTH STAR TERMINAL #2

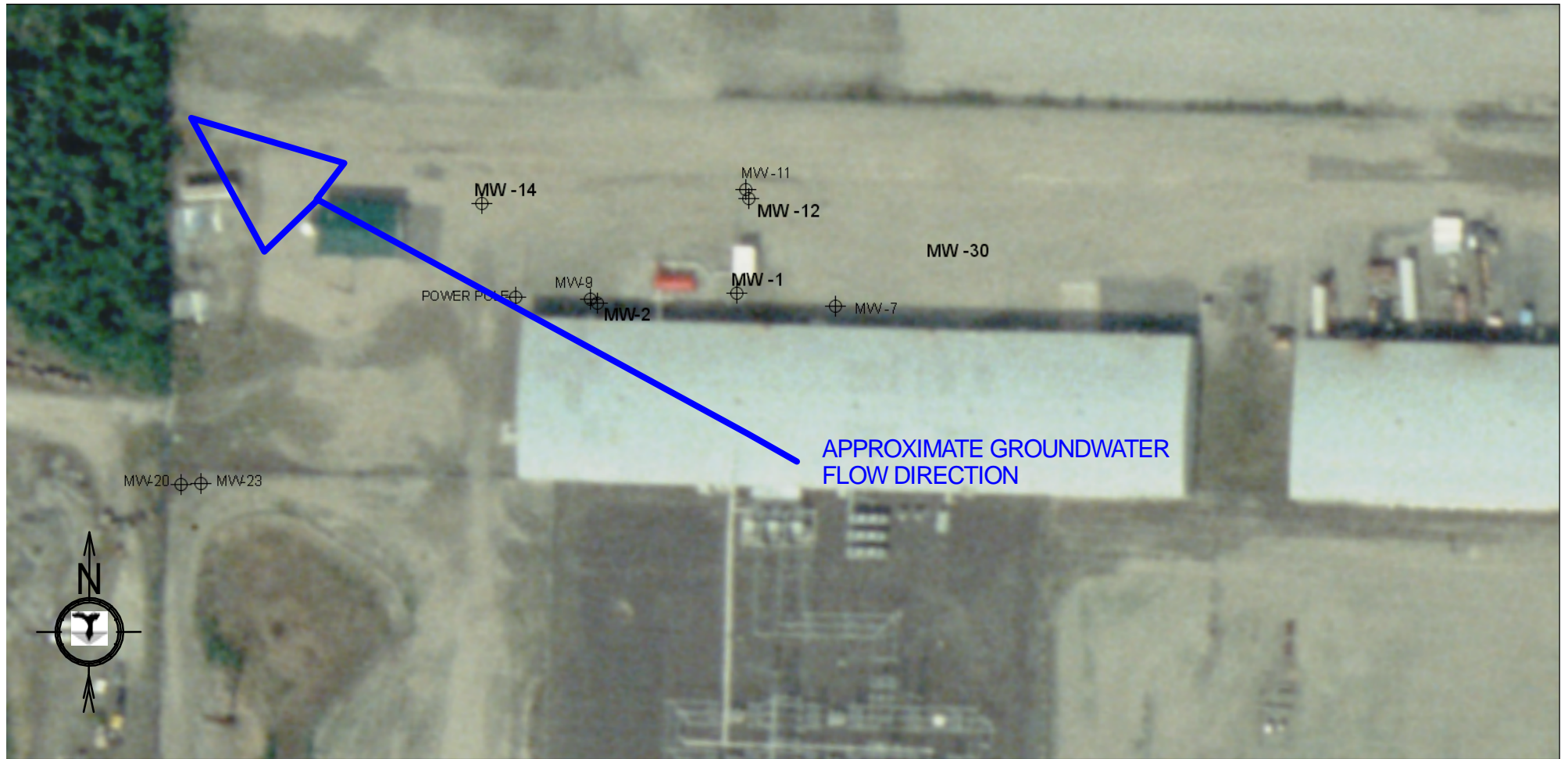
FIGURE 1
 PROJECT LOCATION & VICINITY

PROJECT NO: 1128-36

FILE: PROJECTS\1128\36\ORIGINAL DOCUMENT\FIGURE 1.SKF

DATE: 1/2/2020

SCALE: AS SHOWN



2 11/15/18

12:45pm - arrived onsite to
BESS facility to install
transducers in monitoring
wells for GVEA
- weather clear & 90°F
- wind 3 mph NE

- well MW-11
- DTW 10.54'
- Transducer 3
- 44.5" water

- well
- DTW - 14.3'
- transducer 2
- 78.5"

- well MW 21
DTW - 10.44'
- transducer 1
- 130"

2:00pm work completed -
Offsite headed to
office

Att in the Rain

1/14/19

2:10pm - arrived outside Ca BEES facility to download data from GW transducers for GVEA

- Ryan Peterson - onsite

- weather - mostly cloudy - 10°F

- wind - 2 mph WSW

- Sensor 1 - 125 records

- 15:36:47

- Sensor 3 - 124 records

- 15:50:25

- Sensor 2 - 125 records

- 15:59:21

3:05pm - work completed, offsite headed to office

6 2-20-19

12:20pm - Arrived onsite @
GUEA BESS facility
to access Gw troubleshoot
and download collected
data

- Ryan Peterson onsite
- weather - mostly cloudy
- in 12°F
- wind - 6 mph ENE

12:30pm - offsite to get
download adapter

12:59pm - returned to site

- sensor 1
- 199 records

- sensor 3
~~124 records~~
~~reset~~

- 198 records
(was viewing
prev. session)

2-20-19 7

- sensor 2
- 199 records

1:25pm - work completed
- offsite needed to
office

Back in the Rain

3-22-19

12:45pm - arrived onsite CA
 GREAT BESS facility to
 download data from
 GW transducers
 - weather - overcast, ~ 52°F
 - wind - 8 mph ENE

- sensor 2 - 258 records

- sensor 3 - 258 records

- sensor 1 - 259 records

1:35 pm. work completed - offsite
 headed to office

Return to the Rain

4-22-19

12:45pm - began prepping for field work

1:05pm - arrived onsite Ca GVEA
BESS facility to download information from GW well transducers

- Ryan Peterson - onsite

- weather - mostly cloudy ~ 55°F
- wind - gusty NE

- Sensor 2 - 320 records

- Sensor 3 - 320 records

- Sensor 1 - 321 records

1:48pm - work completed, offsite needed to arrive

Rite in the Rain.

7-10-69

9:00am - began preps for field work

9:45am - arrived onsite at BESS facility to collect GW transducer data for GUBA

- Ryan Peterson - REP onsite

- weather - sunny, 85°F, powder cloudy
- wind 3 mph ENE

- sensor 2

- batteries good
- replaced batteries
- started new session

- sensor 3

- 478 records
- replaced batteries
- started new session

7-10-69

- sensor 1 - 478 reports
- replaced batteries
- started new session

10:55am - work completed.
offsite needed to
order

9/4/19

2:50pm - arrived onsite to download data from groundwater transducers on the subject property

- Ryan Peterson - O&P onsite

- weather mostly cloudy in EOP
- wind in Smpn WSW

- sensor 2 - 335 records
- 113 records

- sensor 3 - 113 records

- sensor 1 - 113 records

5:30pm - work completed - onsite
headed to office

Return to the Basin

12/2/19

11:15am - began prepping for field work

11:50am - arrived onsite on GVEB BESS facility to download GW transducer data and remove transducers

MW-1 - DTW - 14.85'
DTB - 21.82'
sensor - 2

MW-11 - DTW - 11.21'
DTB - 17.16'
sensor - 3

MW-20 DTW - 11.02'
DTB - 52.44'
sensor - 1

- Ryan Peterson, OEB onsite

- weather - overcast, sunny & 40°F

- wind ~ 2 mph SSE

12:00pm - work completed
offsite headed to office

Rate in site rain

Gradient and Flow Direction at GVEA Bess Facility

DATE	Well MW-11 x,y coordinate	MW-11 Elevation	MW20 x,y coordinate	MW20 Elevation	MW1 x,y coordinate	MW1 Elevation	Gradient	Flow Direction from MW6-MW7 (y axis)
	239.509, 411.9541		0,0		148.9153, 416.7631			
11/16/2018 4:13		460.07		459.77		458.22	0.028719087	153.3328494
11/17/2018 4:13		460.07		459.77		458.21	0.028842717	153.3178009
11/18/2018 4:13		460.04		459.76		458.19	0.022620697	151.3148763
11/19/2018 4:13		460.02		459.73		458.16	0.022734317	151.3603424
11/20/2018 4:13		459.99		459.72		458.15	0.022507092	151.2689513
11/21/2018 4:13		459.97		459.69		458.13	0.022496879	151.3230705
11/22/2018 4:13		459.94		459.67		458.11	0.022383271	151.276933
11/23/2018 4:13		459.94		459.66		458.10	0.022496879	151.3230705
11/24/2018 4:13		459.93		459.66		458.10	0.022383271	151.276933
11/25/2018 4:13		459.94		459.65		458.09	0.022610501	151.3687443
11/26/2018 4:13		459.93		459.64		458.08	0.022610501	151.3687443
11/27/2018 4:13		459.89		459.61		458.05	0.022496879	151.3230705
11/28/2018 4:13		459.87		459.58		458.02	0.02264115	151.2072862
11/29/2018 4:13		459.83		459.56		458.01	0.02225945	151.2850035
11/30/2018 4:13		459.83		459.55		458.00	0.022373061	151.3313554
12/1/2018 4:13		459.82		459.55		457.99	0.022383271	151.276933
12/2/2018 4:13		459.78		459.51		457.96	0.02225945	151.2850035
12/3/2018 4:13		459.77		459.49		457.94	0.022373061	151.3313554
12/4/2018 4:13		459.77		459.50		457.96	0.02213563	151.2931643
12/5/2018 4:13		459.77		459.48		457.94	0.022362871	151.3858274
12/6/2018 4:13		459.76		459.48		457.94	0.022249243	151.3397325
12/7/2018 4:13		459.76		459.48		457.94	0.022249243	151.3397325
12/8/2018 4:13		459.74		459.44		457.91	0.022352701	151.440349
12/9/2018 4:13		459.72		459.43		457.90	0.022249243	151.3397325
12/10/2018 4:13		459.71		459.44		457.91	0.02201181	151.3014169
12/11/2018 4:13		459.72		459.41		457.88	0.02246636	151.4857227
12/12/2018 4:13		459.67		459.38		457.85	0.02239056	151.3945116
12/13/2018 4:13		459.66		459.38		457.85	0.022125426	151.3482033
12/14/2018 4:13		459.66		459.36		457.83	0.022352701	151.440349
12/15/2018 4:13		459.63		459.35		457.82	0.022125426	151.3482033
12/16/2018 4:13		459.63		459.35		457.83	0.022001609	151.3567695
12/17/2018 4:13		459.61		459.31		457.79	0.02222889	151.4493408
12/18/2018 4:13		459.58		459.29		457.77	0.022115242	151.403293
12/19/2018 4:13		459.56		459.26		457.75	0.022105079	151.4584334
12/20/2018 4:13		459.54		459.26		457.74	0.022001609	151.3567695
12/21/2018 4:13		459.52		459.24		457.73	0.021877793	151.3654326
12/22/2018 4:13		459.51		459.23		457.72	0.021877793	151.3654326
12/23/2018 4:13		459.50		459.21		457.71	0.021867616	151.4211542
12/24/2018 4:13		459.48		459.19		457.69	0.021867616	151.4211542
12/25/2018 4:13		459.47		459.19		457.69	0.021753978	151.3741944
12/26/2018 4:13		459.47		459.18		457.68	0.021867616	151.4211542
12/27/2018 4:13		459.45		459.16		457.66	0.021867616	151.4211542
12/28/2018 4:13		459.43		459.14		457.65	0.021743804	151.4302373
12/29/2018 4:13		459.41		459.10		457.62	0.021847324	151.5327528
12/30/2018 4:13		459.42		459.12		457.63	0.02185746	151.4769276
12/31/2018 4:13		459.42		459.10		457.62	0.021961011	151.5786923
1/1/2019 4:13		459.40		459.12		457.64	0.021506348	151.3920205

DATE	Well MW-11 x,y coordinate	MW-11 Elevation	MW20 x,y coordinate	MW20 Elevation	MW1 x,y coordinate	MW1 Elevation	Gradient	Flow Direction from MW6-MW7 (y axis)
1/2/2019 4:13		459.34		459.04		457.56	0.021733651	151.4863327
1/3/2019 4:13		459.30		459.02		457.54	0.021506348	151.3920205
1/4/2019 4:13		459.30		459.01		457.54	0.021496181	151.4487175
1/5/2019 4:13		459.29		459.00		457.53	0.021496181	151.4487175
1/6/2019 4:13		459.27		458.98		457.51	0.021496181	151.4487175
1/7/2019 4:13		459.25		458.96		457.49	0.021496181	151.4487175
1/8/2019 4:13		459.23		458.93		457.47	0.021486035	151.5054681
1/9/2019 4:13		459.21		458.92		457.46	0.021377449	151.4295965
1/10/2019 4:13		459.19		458.89		457.44	0.021362228	151.5152021
1/11/2019 4:13		459.18		458.87		457.42	0.02147591	151.5622722
1/12/2019 4:13		459.14		458.85		457.40	0.02124856	151.4676284
1/13/2019 4:13		459.14		458.83		457.38	0.02147591	151.5622722
1/14/2019 4:13		459.10		458.80		457.35	0.021362228	151.5152021
1/15/2019 4:13		459.09		458.80		457.36	0.021124751	151.4772501
1/16/2019 4:13		459.07		458.78		457.34	0.021124751	151.4772501
1/17/2019 4:13		459.05		458.76		457.32	0.021124751	151.4772501
1/18/2019 4:13		459.03		458.74		457.30	0.021124751	151.4772501
1/19/2019 4:13		459.01		458.72		457.29	0.021000942	151.4869853
1/20/2019 4:13		458.99		458.70		457.27	0.021000942	151.4869853
1/21/2019 4:13		458.98		458.68		457.26	0.02099081	151.5450932
1/22/2019 4:13		458.96		458.67		457.24	0.021000942	151.4869853
1/23/2019 4:13		458.96		458.66		457.24	0.02099081	151.5450932
1/24/2019 4:13		458.93		458.65		457.22	0.020887283	151.4384351
1/25/2019 4:13		458.94		458.62		457.20	0.021218207	151.6400565
1/26/2019 4:13		458.88		458.59		457.16	0.021000942	151.4869853
1/27/2019 4:13		458.87		458.58		457.15	0.021000942	151.4869853
1/28/2019 4:13		458.86		458.57		457.15	0.020877134	151.4968359
1/29/2019 4:13		458.86		458.57		457.15	0.020877134	151.4968359
1/30/2019 4:13		458.83		458.53		457.11	0.02099081	151.5450932
1/31/2019 4:13		458.81		458.51		457.09	0.02099081	151.5450932
2/1/2019 4:13		458.80		458.51		457.10	0.020753326	151.506804
2/2/2019 4:13		458.79		458.49		457.08	0.020867006	151.5552934
2/3/2019 4:13		458.78		458.49		457.08	0.020753326	151.506804
2/4/2019 4:13		458.76		458.46		457.05	0.020867006	151.5552934
2/5/2019 4:13		458.76		458.45		457.03	0.021104502	151.5928307
2/6/2019 4:13		458.73		458.43		457.02	0.020867006	151.5552934
2/7/2019 4:13		458.71		458.41		457.01	0.020743202	151.5656153
2/8/2019 4:13		458.70		458.39		456.98	0.0209807	151.6032572
2/9/2019 4:13		458.68		458.39		456.99	0.020629519	151.5168918
2/10/2019 4:13		458.71		458.38		456.97	0.021208133	151.697642
2/11/2019 4:13		458.65		458.38		456.97	0.020526012	151.4082142
2/12/2019 4:13		458.67		458.36		456.96	0.0208569	151.6138076
2/13/2019 4:13		458.65		458.34		456.93	0.0209807	151.6032572
2/14/2019 4:13		458.62		458.34		456.93	0.020639661	151.4577806
2/15/2019 4:13		458.62		458.32		456.92	0.020743202	151.5656153
2/16/2019 4:13		458.62		458.29		456.90	0.020960545	151.7197533
2/17/2019 4:13		458.62		458.33		456.93	0.020629519	151.5168918
2/18/2019 4:13		458.60		458.30		456.90	0.020743202	151.5656153
2/19/2019 4:13		458.58		458.27		456.87	0.0208569	151.6138076
2/20/2019 4:13		458.58		458.29		456.89	0.020629519	151.5168918
2/21/2019 4:13		458.58		458.26		456.86	0.020970612	151.6614773

DATE	Well MW-11 x,y coordinate	MW-11 Elevation	MW20 x,y coordinate	MW20 Elevation	MW1 x,y coordinate	MW1 Elevation	Gradient	Flow Direction from MW6-MW7 (y axis)
2/22/2019 4:13		458.55		458.24		456.84	0.0208569	151.6138076
2/23/2019 4:13		458.55		458.24		456.84	0.0208569	151.6138076
2/24/2019 4:13		458.54		458.22		456.83	0.020846815	151.6723785
2/25/2019 4:13		458.54		458.23		456.83	0.0208569	151.6138076
2/26/2019 4:13		458.52		458.21		456.81	0.0208569	151.6138076
2/27/2019 4:13		458.51		458.20		456.81	0.0207331	151.6244839
2/28/2019 4:13		458.51		458.20		456.81	0.0207331	151.6244839
3/1/2019 4:13		458.50		458.18		456.79	0.020846815	151.6723785
3/2/2019 4:13		458.48		458.17		456.78	0.0207331	151.6244839
3/3/2019 4:13		458.47		458.16		456.76	0.0208569	151.6138076
3/4/2019 4:13		458.47		458.16		456.77	0.0207331	151.6244839
3/5/2019 4:13		458.47		458.15		456.76	0.020846815	151.6723785
3/6/2019 4:13		458.46		458.14		456.75	0.020846815	151.6723785
3/7/2019 4:13		458.45		458.14		456.75	0.0207331	151.6244839
3/8/2019 4:13		458.44		458.12		456.73	0.020846815	151.6723785
3/9/2019 4:13		458.44		458.13		456.74	0.0207331	151.6244839
3/10/2019 4:13		458.45		458.12		456.73	0.022098589	152.1666706
3/11/2019 4:13		458.42		458.09		456.71	0.020836753	151.731006
3/12/2019 4:13		458.40		458.08		456.70	0.020723019	151.6834099
3/13/2019 4:13		458.40		458.09		456.70	0.0207331	151.6244839
3/14/2019 4:13		458.41		458.08		456.70	0.020836753	151.731006
3/15/2019 4:13		458.38		458.07		456.69	0.0206093	151.6352886
3/16/2019 4:13		458.40		458.08		456.69	0.020846815	151.6723785
3/17/2019 4:13		458.38		458.07		456.69	0.0206093	151.6352886
3/18/2019 4:13		458.38		458.06		456.67	0.020846815	151.6723785
3/19/2019 4:13		458.37		458.03		456.65	0.0209505	151.7780853
3/20/2019 4:13		458.39		458.09		456.71	0.020495596	151.5866332
3/21/2019 4:13		458.37		458.06		456.67	0.0207331	151.6244839
3/22/2019 4:13		458.38		458.05		456.73	0.020094015	151.8014337
3/23/2019 4:13		458.38		458.07		456.74	0.019990316	151.691319
3/24/2019 4:13		458.37		458.09		456.75	0.019773004	151.5293053
3/25/2019 4:13		458.39		458.11		456.77	0.019773004	151.5293053
3/26/2019 4:13		458.43		458.14		456.80	0.019886691	151.5800563
3/27/2019 4:13		458.45		458.18		456.85	0.019535524	151.4884373
3/28/2019 4:13		458.52		458.24		456.89	0.01989681	151.518706
3/29/2019 4:13		458.57		458.26		456.90	0.020361704	151.6572919
3/30/2019 4:13		458.59		458.29		456.93	0.020247993	151.6081652
3/31/2019 4:13		458.59		458.33		456.97	0.019793303	151.4060148
4/1/2019 4:13		458.62		458.36		456.99	0.019917117	151.3961927
4/2/2019 4:13		458.64		458.39		457.02	0.019803487	151.3444645
4/3/2019 4:13		458.74		458.40		457.03	0.020826712	151.7896901
4/4/2019 4:13		458.68		458.41		457.04	0.020030763	151.447334
4/5/2019 4:13		458.69		458.41		457.04	0.020144425	151.4978982
4/6/2019 4:13		458.68		458.39		457.02	0.020258102	151.547895
4/7/2019 4:13		458.66		458.39		457.01	0.020154574	151.4373738
4/8/2019 4:13		458.65		458.38		457.01	0.020030763	151.447334
4/9/2019 4:13		458.65		458.39		457.00	0.020164746	151.3769104
4/10/2019 4:13		458.67		458.42		457.04	0.019927304	151.3350298
4/11/2019 4:13		458.72		458.48		457.09	0.019937514	151.2739296
4/12/2019 4:13		458.74		458.48		457.09	0.020164746	151.3769104
4/13/2019 4:13		458.74		458.50		457.10	0.020061336	151.2649933

DATE	Well MW-11 x,y coordinate	MW-11 Elevation	MW20 x,y coordinate	MW20 Elevation	MW1 x,y coordinate	MW1 Elevation	Gradient	Flow Direction from MW6-MW7 (y axis)
4/14/2019 4:13		458.76		458.52		457.12	0.020061336	151.2649933
4/15/2019 4:13		458.78		458.55		457.15	0.019947747	151.2128919
4/16/2019 4:13		458.80		458.56		457.15	0.020185158	151.2561667
4/17/2019 4:13		458.78		458.53		457.13	0.020174941	151.316508
4/18/2019 4:13		458.81		458.54		457.15	0.020278386	151.4275352
4/19/2019 4:13		458.78		458.52		457.12	0.020288562	151.3674457
4/20/2019 4:13		458.78		458.52		457.12	0.020288562	151.3674457
4/21/2019 4:13		458.78		458.54		457.14	0.020061336	151.2649933
4/22/2019 4:13		458.76		458.51		457.04	0.021041684	151.2551148
4/23/2019 4:13		458.70		458.48		456.99	0.020948635	151.0892245
4/24/2019 4:13		458.71		458.49		456.99	0.021072465	151.0818024
4/25/2019 4:13		458.71		458.50		456.99	0.021082769	151.0241442
4/26/2019 4:13		458.70		458.48		456.97	0.021196296	151.074467
4/27/2019 4:13		458.68		458.47		456.95	0.021206602	151.0171491
4/28/2019 4:13		458.66		458.47		456.94	0.021103439	150.9089971
4/29/2019 4:13		458.66		458.46		456.92	0.021340766	150.9533087
4/30/2019 4:13		458.64		458.45		Transducer Failed	No Data Available	No Data Available
5/1/2019 4:13		458.64		458.46		Transducer Failed	No Data Available	No Data Available
5/2/2019 4:13		458.64		458.47		Transducer Failed	No Data Available	No Data Available
5/3/2019 4:13		458.61		458.43		Transducer Failed	No Data Available	No Data Available
5/4/2019 4:13		458.61		458.45		Transducer Failed	No Data Available	No Data Available
5/5/2019 4:13		458.62		458.47		Transducer Failed	No Data Available	No Data Available
5/6/2019 4:13		458.61		458.44		Transducer Failed	No Data Available	No Data Available
5/7/2019 4:13		458.59		458.45		Transducer Failed	No Data Available	No Data Available
5/8/2019 4:13		458.57		458.42		Transducer Failed	No Data Available	No Data Available
5/9/2019 4:13		458.54		458.43		Transducer Failed	No Data Available	No Data Available
5/10/2019 4:13		458.60		458.48		Transducer Failed	No Data Available	No Data Available
5/11/2019 4:13		458.56		458.45		Transducer Failed	No Data Available	No Data Available
5/12/2019 4:13		458.55		458.47		Transducer Failed	No Data Available	No Data Available
5/13/2019 4:13		458.58		458.49		Transducer Failed	No Data Available	No Data Available
5/14/2019 4:13		458.58		458.49		Transducer Failed	No Data Available	No Data Available
5/15/2019 4:13		458.58		458.50		Transducer Failed	No Data Available	No Data Available
5/16/2019 4:13		458.58		458.51		Transducer Failed	No Data Available	No Data Available
5/17/2019 4:13		458.58		458.50		Transducer Failed	No Data Available	No Data Available
5/18/2019 4:13		458.58		458.50		Transducer Failed	No Data Available	No Data Available
5/19/2019 4:13		458.59		458.52		Transducer Failed	No Data Available	No Data Available
5/20/2019 4:13		458.61		458.53		Transducer Failed	No Data Available	No Data Available
5/21/2019 4:13		458.61		458.54		Transducer Failed	No Data Available	No Data Available
5/22/2019 4:13		458.63		458.55		Transducer Failed	No Data Available	No Data Available
5/23/2019 4:13		458.64		458.56		Transducer Failed	No Data Available	No Data Available
5/24/2019 4:13		458.63		458.56		Transducer Failed	No Data Available	No Data Available
5/25/2019 4:13		458.66		458.60		Transducer Failed	No Data Available	No Data Available
5/26/2019 4:13		458.69		458.62		Transducer Failed	No Data Available	No Data Available
5/27/2019 4:13		458.69		458.62		Transducer Failed	No Data Available	No Data Available
5/28/2019 4:13		458.71		458.64		Transducer Failed	No Data Available	No Data Available
5/29/2019 4:13		458.73		458.67		Transducer Failed	No Data Available	No Data Available
5/30/2019 4:13		458.75		458.69		Transducer Failed	No Data Available	No Data Available
5/31/2019 4:13		458.78		458.71		Transducer Failed	No Data Available	No Data Available
6/1/2019 4:13		458.79		458.74		Transducer Failed	No Data Available	No Data Available
6/2/2019 4:13		458.85		458.79		Transducer Failed	No Data Available	No Data Available
6/3/2019 4:13		458.89		458.84		Transducer Failed	No Data Available	No Data Available

DATE	Well MW-11 x,y coordinate	MW-11 Elevation	MW20 x,y coordinate	MW20 Elevation	MW1 x,y coordinate	MW1 Elevation	Gradient	Flow Direction from MW6-MW7 (y axis)
6/4/2019 4:13		458.93		458.88		Transducer Failed	No Data Available	No Data Available
6/5/2019 4:13		458.97		458.92		Transducer Failed	No Data Available	No Data Available
6/6/2019 4:13		459.00		458.95		Transducer Failed	No Data Available	No Data Available
6/7/2019 4:13		459.02		458.97		Transducer Failed	No Data Available	No Data Available
6/8/2019 4:13		459.04		458.98		Transducer Failed	No Data Available	No Data Available
6/9/2019 4:13		459.05		458.99		Transducer Failed	No Data Available	No Data Available
6/10/2019 4:13		459.08		459.03		Transducer Failed	No Data Available	No Data Available
6/11/2019 4:13		459.10		459.05		Transducer Failed	No Data Available	No Data Available
6/12/2019 4:13		459.11		459.06		Transducer Failed	No Data Available	No Data Available
6/13/2019 4:13		459.13		459.07		Transducer Failed	No Data Available	No Data Available
6/14/2019 4:13		459.14		459.09		Transducer Failed	No Data Available	No Data Available
6/15/2019 4:13		459.15		459.10		Transducer Failed	No Data Available	No Data Available
6/16/2019 4:13		459.17		459.12		Transducer Failed	No Data Available	No Data Available
6/17/2019 4:13		459.19		459.14		Transducer Failed	No Data Available	No Data Available
6/18/2019 4:13		459.19		459.14		Transducer Failed	No Data Available	No Data Available
6/19/2019 4:13		459.20		459.15		Transducer Failed	No Data Available	No Data Available
6/20/2019 4:13		459.21		459.17		Transducer Failed	No Data Available	No Data Available
6/21/2019 4:13		459.24		459.19		Transducer Failed	No Data Available	No Data Available
6/22/2019 4:13		459.25		459.21		Transducer Failed	No Data Available	No Data Available
6/23/2019 4:13		459.27		459.23		Transducer Failed	No Data Available	No Data Available
6/24/2019 4:13		459.30		459.26		Transducer Failed	No Data Available	No Data Available
6/25/2019 4:13		459.33		459.28		Transducer Failed	No Data Available	No Data Available
6/26/2019 4:13		459.34		459.31		Transducer Failed	No Data Available	No Data Available
6/27/2019 4:13		459.36		459.33		Transducer Failed	No Data Available	No Data Available
6/28/2019 4:13		459.39		459.35		Transducer Failed	No Data Available	No Data Available
6/29/2019 4:13		459.40		459.37		Transducer Failed	No Data Available	No Data Available
6/30/2019 4:13		459.43		459.39		Transducer Failed	No Data Available	No Data Available
7/1/2019 4:13		459.44		459.42		Transducer Failed	No Data Available	No Data Available
7/2/2019 4:13		459.48		459.45		Transducer Failed	No Data Available	No Data Available
7/3/2019 4:13		459.51		459.47		Transducer Failed	No Data Available	No Data Available
7/4/2019 4:13		459.52		459.49		Transducer Failed	No Data Available	No Data Available
7/5/2019 4:13		459.54		459.51		Transducer Failed	No Data Available	No Data Available
7/6/2019 4:13		459.56		459.54		Transducer Failed	No Data Available	No Data Available
7/7/2019 4:13		459.59		459.56		Transducer Failed	No Data Available	No Data Available
7/8/2019 4:13		459.61		459.58		Transducer Failed	No Data Available	No Data Available
7/9/2019 4:13		459.64		459.61		Transducer Failed	No Data Available	No Data Available
7/10/2019 4:13		459.66		459.57		Transducer Failed	No Data Available	No Data Available
7/10/2019 11:23		459.67		459.69		457.86	0.022440312	149.7192339
7/11/2019 11:23		459.69		459.50		457.87	0.021321361	150.3903382
7/12/2019 11:23		459.71		459.51		457.90	0.022197282	150.9639978
7/13/2019 11:23		459.73		459.54		457.93	0.022094155	150.8604473
7/14/2019 11:23		459.76		459.57		457.95	0.022217995	150.854683
7/15/2019 11:23		459.78		459.59		457.97	0.022217995	150.854683
7/16/2019 11:23		459.80		459.61		457.99	0.022217995	150.854683
7/17/2019 11:23		459.82		459.63		458.00	0.022341836	150.8489826
7/18/2019 11:23		459.83		459.64		458.01	0.022341836	150.8489826
7/19/2019 11:23		459.84		459.66		458.03	0.022228382	150.800102
7/20/2019 11:23		459.86		459.67		458.04	0.022341836	150.8489826
7/21/2019 11:23		459.88		459.68		458.06	0.022331467	150.9033089
7/22/2019 11:23		459.89		459.70		458.08	0.022217995	150.854683
7/23/2019 11:23		459.91		459.72		458.10	0.022217995	150.854683

DATE	Well MW-11 x,y coordinate	MW-11 Elevation	MW20 x,y coordinate	MW20 Elevation	MW1 x,y coordinate	MW1 Elevation	Gradient	Flow Direction from MW6-MW7 (y axis)
7/24/2019 11:23		459.92		459.74		458.10	0.022352225	150.7947067
7/25/2019 11:23		459.94		459.74		458.13	0.022207629	150.9093149
7/26/2019 11:23		459.96		459.77		458.14	0.022341836	150.8489826
7/27/2019 11:23		459.98		459.79		458.17	0.022217995	150.854683
7/28/2019 11:23		460.00		459.81		458.18	0.022341836	150.8489826
7/29/2019 11:23		460.01		459.83		458.20	0.022228382	150.800102
7/30/2019 11:23		460.03		459.85		458.23	0.022104539	150.8055578
7/31/2019 11:23		460.06		459.87		458.24	0.022341836	150.8489826
8/1/2019 11:23		460.07		459.89		458.27	0.022104539	150.8055578
8/2/2019 11:23		460.11		459.93		458.37	0.021361488	150.8396211
8/3/2019 11:23		460.23		460.06		458.57	0.020381141	150.829359
8/4/2019 11:23		460.41		460.23		458.65	0.021609171	150.8280064
8/5/2019 11:23		460.49		460.31		458.72	0.021733013	150.8222983
8/6/2019 11:23		460.56		460.36		458.77	0.021959952	150.9215301
8/7/2019 11:23		460.67		460.49		458.93	0.021361488	150.8396211
8/8/2019 11:23		460.77		460.59		459.01	0.021609171	150.8280064
8/9/2019 11:23		460.84		460.65		459.04	0.022094155	150.8604473
8/10/2019 11:23		460.87		460.68		459.07	0.022094155	150.8604473
8/11/2019 11:23		460.89		460.70		459.09	0.022094155	150.8604473
8/12/2019 11:23		460.91		460.72		459.12	0.021970314	150.8662765
8/13/2019 11:23		460.95		460.76		459.23	0.021103439	150.9089971
8/14/2019 11:23		461.06		460.88		459.30	0.021609171	150.8280064
8/15/2019 11:23		461.13		460.94		459.35	0.021846474	150.8721719
8/16/2019 11:23		461.26		461.08		459.76	0.018389375	151.0034011
8/17/2019 11:23		461.57		461.39		459.86	0.020989966	150.8575571
8/18/2019 11:23		461.68		461.49		459.91	0.021722635	150.8781345
8/19/2019 11:23		461.74		461.54		459.94	0.02208379	150.9153883
8/20/2019 11:23		461.76		461.55		459.94	0.022321119	150.9576857
8/21/2019 11:23		461.77		461.57		459.96	0.022207629	150.9093149
8/22/2019 11:23		461.79		461.59		459.99	0.02208379	150.9153883
8/23/2019 11:23		461.80		461.59		459.97	0.022444955	150.9514432
8/24/2019 11:23		461.77		461.57		459.96	0.022207629	150.9093149
8/25/2019 11:23		461.77		461.57		459.94	0.022455306	150.8973691
8/26/2019 11:23		461.74		461.54		459.93	0.022207629	150.9093149
8/27/2019 11:23		461.74		461.54		459.91	0.022455306	150.8973691
8/28/2019 11:23		461.71		461.51		459.89	0.022331467	150.9033089
8/29/2019 11:23		461.71		461.50		459.89	0.022321119	150.9576857
8/30/2019 11:23		461.70		461.50		459.89	0.022207629	150.9093149
8/31/2019 11:23		461.69		461.48		459.85	0.022568792	150.9452691
9/1/2019 11:23		461.69		461.48		459.86	0.022444955	150.9514432
9/2/2019 11:23		461.65		461.45		459.80	0.022702984	150.885684
9/3/2019 11:23		461.58		461.37		459.73	0.022692629	150.9391625
9/4/2019 11:23		461.54		461.33		Transducer Failed	No Data Available	No Data Available
9/5/2019 11:23		461.50		461.31		Transducer Failed	No Data Available	No Data Available
9/6/2019 11:23		461.49		461.30		Transducer Failed	No Data Available	No Data Available
9/7/2019 11:23		461.49		461.28		Transducer Failed	No Data Available	No Data Available
9/8/2019 11:23		461.41		461.21		Transducer Failed	No Data Available	No Data Available
9/9/2019 11:23		461.41		461.22		Transducer Failed	No Data Available	No Data Available
9/10/2019 11:23		461.37		461.17		Transducer Failed	No Data Available	No Data Available
9/11/2019 11:23		461.33		461.14		Transducer Failed	No Data Available	No Data Available
9/12/2019 11:23		461.35		461.15		Transducer Failed	No Data Available	No Data Available

DATE	Well MW-11 x,y coordinate	MW-11 Elevation	MW20 x,y coordinate	MW20 Elevation	MW1 x,y coordinate	MW1 Elevation	Gradient	Flow Direction from MW6-MW7 (y axis)
9/13/2019 11:23		461.29		461.08		Transducer Failed	No Data Available	No Data Available
9/14/2019 11:23		461.19		460.99		Transducer Failed	No Data Available	No Data Available
9/15/2019 11:23		461.22		461.02		Transducer Failed	No Data Available	No Data Available
9/16/2019 11:23		461.15		460.95		Transducer Failed	No Data Available	No Data Available
9/17/2019 11:23		461.11		460.91		Transducer Failed	No Data Available	No Data Available
9/18/2019 11:23		461.14		460.93		Transducer Failed	No Data Available	No Data Available
9/19/2019 11:23		461.04		460.85		Transducer Failed	No Data Available	No Data Available
9/20/2019 11:23		461.10		460.89		Transducer Failed	No Data Available	No Data Available
9/21/2019 11:23		461.02		460.83		Transducer Failed	No Data Available	No Data Available
9/22/2019 11:23		461.01		460.81		Transducer Failed	No Data Available	No Data Available
9/23/2019 11:23		461.00		460.81		Transducer Failed	No Data Available	No Data Available
9/24/2019 11:23		460.95		460.75		Transducer Failed	No Data Available	No Data Available
9/25/2019 11:23		460.93		460.74		Transducer Failed	No Data Available	No Data Available
9/26/2019 11:23		460.85		460.65		Transducer Failed	No Data Available	No Data Available
9/27/2019 11:23		460.83		460.62		Transducer Failed	No Data Available	No Data Available
9/28/2019 11:23		460.81		460.61		Transducer Failed	No Data Available	No Data Available
9/29/2019 11:23		460.81		460.60		Transducer Failed	No Data Available	No Data Available
9/30/2019 11:23		460.77		460.56		Transducer Failed	No Data Available	No Data Available
10/1/2019 11:23		460.76		460.56		Transducer Failed	No Data Available	No Data Available
10/2/2019 11:23		460.78		460.58		Transducer Failed	No Data Available	No Data Available
10/3/2019 11:23		460.87		460.67		Transducer Failed	No Data Available	No Data Available
10/4/2019 11:23		460.94		460.73		Transducer Failed	No Data Available	No Data Available
10/5/2019 11:23		460.95		460.75		Transducer Failed	No Data Available	No Data Available
10/6/2019 11:23		460.95		460.74		Transducer Failed	No Data Available	No Data Available
10/7/2019 11:23		460.87		460.67		Transducer Failed	No Data Available	No Data Available
10/8/2019 11:23		460.89		460.68		Transducer Failed	No Data Available	No Data Available
10/9/2019 11:23		460.88		460.66		Transducer Failed	No Data Available	No Data Available
10/10/2019 11:23		460.87		460.66		Transducer Failed	No Data Available	No Data Available
10/11/2019 11:23		460.89		460.67		Transducer Failed	No Data Available	No Data Available
10/12/2019 11:23		460.81		460.60		Transducer Failed	No Data Available	No Data Available
10/13/2019 11:23		460.79		460.58		Transducer Failed	No Data Available	No Data Available
10/14/2019 11:23		460.78		460.56		Transducer Failed	No Data Available	No Data Available
10/15/2019 11:23		460.77		460.55		Transducer Failed	No Data Available	No Data Available
10/16/2019 11:23		460.70		460.48		Transducer Failed	No Data Available	No Data Available
10/17/2019 11:23		460.65		460.43		Transducer Failed	No Data Available	No Data Available
10/18/2019 11:23		460.58		460.36		Transducer Failed	No Data Available	No Data Available
10/19/2019 11:23		460.52		460.30		Transducer Failed	No Data Available	No Data Available
10/20/2019 11:23		460.46		460.24		Transducer Failed	No Data Available	No Data Available
10/21/2019 11:23		460.43		460.21		Transducer Failed	No Data Available	No Data Available
10/22/2019 11:23		460.36		460.15		Transducer Failed	No Data Available	No Data Available
10/23/2019 11:23		460.39		460.17		Transducer Failed	No Data Available	No Data Available
10/24/2019 11:23		460.30		460.08		Transducer Failed	No Data Available	No Data Available
10/25/2019 11:23		460.21		459.99		Transducer Failed	No Data Available	No Data Available
10/26/2019 11:23		460.18		459.96		Transducer Failed	No Data Available	No Data Available
10/27/2019 11:23		460.16		459.94		Transducer Failed	No Data Available	No Data Available
10/28/2019 11:23		460.14		459.92		Transducer Failed	No Data Available	No Data Available
10/29/2019 11:23		460.09		459.87		Transducer Failed	No Data Available	No Data Available
10/30/2019 11:23		460.04		459.82		Transducer Failed	No Data Available	No Data Available
10/31/2019 11:23		460.01		459.79		Transducer Failed	No Data Available	No Data Available
11/1/2019 11:23		459.97		459.75		Transducer Failed	No Data Available	No Data Available
11/2/2019 11:23		459.92		459.70		Transducer Failed	No Data Available	No Data Available

DATE	Well MW-11 x,y coordinate	MW-11 Elevation	MW20 x,y coordinate	MW20 Elevation	MW1 x,y coordinate	MW1 Elevation	Gradient	Flow Direction from MW6-MW7 (y axis)
11/3/2019 11:23		459.89		459.67		Transducer Failed	No Data Available	No Data Available
11/4/2019 11:23		459.85		459.63		Transducer Failed	No Data Available	No Data Available
11/5/2019 11:23		459.83		459.61		Transducer Failed	No Data Available	No Data Available
11/6/2019 11:23		459.80		459.58		Transducer Failed	No Data Available	No Data Available
11/7/2019 11:23		459.76		459.53		Transducer Failed	No Data Available	No Data Available
11/8/2019 11:23		459.71		459.49		Transducer Failed	No Data Available	No Data Available
11/9/2019 11:23		459.68		459.45		Transducer Failed	No Data Available	No Data Available
11/10/2019 11:23		459.63		459.41		Transducer Failed	No Data Available	No Data Available
11/11/2019 11:23		459.60		459.38		Transducer Failed	No Data Available	No Data Available
11/12/2019 11:23		459.57		459.34		Transducer Failed	No Data Available	No Data Available
11/13/2019 11:23		459.55		459.34		Transducer Failed	No Data Available	No Data Available
11/14/2019 11:23		459.55		459.34		Transducer Failed	No Data Available	No Data Available
11/15/2019 11:23		459.51		459.30		Transducer Failed	No Data Available	No Data Available
11/16/2019 11:23		459.50		459.29		Transducer Failed	No Data Available	No Data Available
11/17/2019 11:23		459.48		459.27		Transducer Failed	No Data Available	No Data Available
11/18/2019 11:23		459.46		459.25		Transducer Failed	No Data Available	No Data Available
11/19/2019 11:23		459.48		459.27		Transducer Failed	No Data Available	No Data Available
11/20/2019 11:23		459.46		459.24		Transducer Failed	No Data Available	No Data Available
11/21/2019 11:23		459.44		459.23		Transducer Failed	No Data Available	No Data Available
11/22/2019 11:23		459.45		459.24		Transducer Failed	No Data Available	No Data Available
11/23/2019 11:23		459.41		459.21		Transducer Failed	No Data Available	No Data Available
11/24/2019 11:23		459.40		459.20		Transducer Failed	No Data Available	No Data Available
11/25/2019 11:23		459.39		459.19		Transducer Failed	No Data Available	No Data Available
11/26/2019 11:23		459.41		459.21		Transducer Failed	No Data Available	No Data Available
11/27/2019 11:23		459.44		459.24		Transducer Failed	No Data Available	No Data Available
11/28/2019 11:23		459.41		459.20		Transducer Failed	No Data Available	No Data Available
11/29/2019 11:23		459.41		459.20		Transducer Failed	No Data Available	No Data Available
11/30/2019 11:23		459.40		459.19		Transducer Failed	No Data Available	No Data Available
12/1/2019 11:23		459.42		459.21		Transducer Failed	No Data Available	No Data Available
12/2/2019 11:23		459.40		459.19		Transducer Failed	No Data Available	No Data Available

Average	0.021239455	151.5029413
Maximum	0.028842717	153.3328494
Minimum	0.019535524	151.2072862
Winter Average	0.021879241	151.4767377
Winter Maximum	0.028842717	153.3328494
Winter Minimum	0.020743202	151.2072862
Spring Average	0.020838818	151.6344722
Spring Maximum	0.022098589	152.1666706
Spring Minimum	0.020526012	151.4082142
Summer Average	0.020186084	151.4979606
Summer Maximum	0.0209505	151.8014337
Summer Minimum	0.019535524	151.2128919

MW-11 - Sensor 3		MW 1 Rim Elevation-470.6091 *Sensor Elevation-456.7351		MW-20 - Sensor 1		MW-20 Rim Elevation-470.2102 *Transducer Elevation- 425.34		MW-1		MW7 Rim Elevation-472-5176 *Transducer Elevation- 451.4896
Date/Time	Height (feet)	Elevation of groundwater		Date/Time	Height (feet)	Elevation of groundwater		Date/Time	Height (feet)	Elevation of groundwater
4/29/2019 16:13	1.934	458.67		4/29/2019 16:13	9.14	458.45				
4/30/2019 4:13	1.904	458.64		4/30/2019 4:13	9.135	458.45				
4/30/2019 16:13	1.918	458.65		4/30/2019 16:13	9.141	458.45				
5/1/2019 4:13	1.908	458.64		5/1/2019 4:13	9.15	458.46				
5/1/2019 16:13	1.924	458.66		5/1/2019 16:13	9.145	458.46				
5/2/2019 4:13	1.9	458.64		5/2/2019 4:13	9.156	458.47				
5/2/2019 16:13	1.901	458.64		5/2/2019 16:13	9.133	458.45				
5/3/2019 4:13	1.87	458.61		5/3/2019 4:13	9.119	458.43				
5/3/2019 16:13	1.879	458.61		5/3/2019 16:13	9.138	458.45				
5/4/2019 4:13	1.878	458.61		5/4/2019 4:13	9.141	458.45				
5/4/2019 16:13	1.883	458.62		5/4/2019 16:13	9.139	458.45				
5/5/2019 4:13	1.882	458.62		5/5/2019 4:13	9.154	458.47				
5/5/2019 16:13	1.9	458.64		5/5/2019 16:13	9.155	458.47				
5/6/2019 4:13	1.877	458.61		5/6/2019 4:13	9.128	458.44				
5/6/2019 16:13	1.853	458.59		5/6/2019 16:13	9.126	458.44				
5/7/2019 4:13	1.851	458.59		5/7/2019 4:13	9.138	458.45				
5/7/2019 16:13	1.854	458.59		5/7/2019 16:13	9.113	458.43				
5/8/2019 4:13	1.832	458.57		5/8/2019 4:13	9.111	458.42				
5/8/2019 16:13	1.825	458.56		5/8/2019 16:13	9.095	458.41				
5/9/2019 4:13	1.808	458.54		5/9/2019 4:13	9.119	458.43				
5/9/2019 16:13	1.836	458.57		5/9/2019 16:13	9.149	458.46				
5/10/2019 4:13	1.866	458.60		5/10/2019 4:13	9.162	458.48				
5/10/2019 16:13	1.846	458.58		5/10/2019 16:13	9.133	458.45				
5/11/2019 4:13	1.823	458.56		5/11/2019 4:13	9.139	458.45				
5/11/2019 16:13	1.826	458.56		5/11/2019 16:13	9.132	458.45				
5/12/2019 4:13	1.816	458.55		5/12/2019 4:13	9.153	458.47				
5/12/2019 16:13	1.843	458.58		5/12/2019 16:13	9.165	458.48				
5/13/2019 4:13	1.84	458.58		5/13/2019 4:13	9.174	458.49				
5/13/2019 16:13	1.853	458.59		5/13/2019 16:13	9.17	458.48				
5/14/2019 4:13	1.84	458.58		5/14/2019 4:13	9.172	458.49				
5/14/2019 16:13	1.847	458.58		5/14/2019 16:13	9.175	458.49				
5/15/2019 4:13	1.841	458.58		5/15/2019 4:13	9.184	458.50				
5/15/2019 16:13	1.856	458.59		5/15/2019 16:13	9.183	458.50				
5/16/2019 4:13	1.848	458.58		5/16/2019 4:13	9.194	458.51				
5/16/2019 16:13	1.862	458.60		5/16/2019 16:13	9.176	458.49				
5/17/2019 4:13	1.844	458.58		5/17/2019 4:13	9.182	458.50				
5/17/2019 16:13	1.852	458.59		5/17/2019 16:13	9.181	458.49				
5/18/2019 4:13	1.841	458.58		5/18/2019 4:13	9.19	458.50				
5/18/2019 16:13	1.851	458.59		5/18/2019 16:13	9.197	458.51				
5/19/2019 4:13	1.859	458.59		5/19/2019 4:13	9.211	458.52				
5/19/2019 16:13	1.883	458.62		5/19/2019 16:13	9.22	458.53				
5/20/2019 4:13	1.879	458.61		5/20/2019 4:13	9.221	458.53				
5/20/2019 16:13	1.886	458.62		5/20/2019 16:13	9.215	458.53				
5/21/2019 4:13	1.874	458.61		5/21/2019 4:13	9.226	458.54				
5/21/2019 16:13	1.894	458.63		5/21/2019 16:13	9.226	458.54				
5/22/2019 4:13	1.891	458.63		5/22/2019 4:13	9.24	458.55				
5/22/2019 16:13	1.912	458.65		5/22/2019 16:13	9.247	458.56				
5/23/2019 4:13	1.909	458.64		5/23/2019 4:13	9.244	458.56				
5/23/2019 16:13	1.911	458.65		5/23/2019 16:13	9.237	458.55				
5/24/2019 4:13	1.898	458.63		5/24/2019 4:13	9.245	458.56				
5/24/2019 16:13	1.916	458.65		5/24/2019 16:13	9.262	458.58				
5/25/2019 4:13	1.929	458.66		5/25/2019 4:13	9.285	458.60				
5/25/2019 16:13	1.954	458.69		5/25/2019 16:13	9.292	458.61				
5/26/2019 4:13	1.952	458.69		5/26/2019 4:13	9.308	458.62				
5/26/2019 16:13	1.982	458.72		5/26/2019 16:13	9.308	458.62				
5/27/2019 4:13	1.959	458.69		5/27/2019 4:13	9.309	458.62				
5/27/2019 16:13	1.976	458.71		5/27/2019 16:13	9.317	458.63				
5/28/2019 4:13	1.978	458.71		5/28/2019 4:13	9.328	458.64				
5/28/2019 16:13	1.991	458.73		5/28/2019 16:13	9.341	458.65				
5/29/2019 4:13	1.998	458.73		5/29/2019 4:13	9.358	458.67				
5/29/2019 16:13	2.015	458.75		5/29/2019 16:13	9.363	458.68				
5/30/2019 4:13	2.017	458.75		5/30/2019 4:13	9.38	458.69				
5/30/2019 16:13	2.042	458.78		5/30/2019 16:13	9.389	458.70				
5/31/2019 4:13	2.042	458.78		5/31/2019 4:13	9.394	458.71				
5/31/2019 16:13	2.047	458.78		5/31/2019 16:13	9.405	458.72				
6/1/2019 4:13	2.057	458.79		6/1/2019 4:13	9.429	458.74				
6/1/2019 16:13	2.084	458.82		6/1/2019 16:13	9.454	458.77				

MW-11 - Sensor 3		MW 1 Rim Elevation-470.6091 *Sensor Elevation-456.7351		MW-20 - Sensor 1		MW-20 Rim Elevation-470.2102 *Transducer Elevation- 425.34		MW-1		MW7 Rim Elevation-472-5176 *Transducer Elevation- 451.4896
Date/Time	Height (feet)	Elevation of groundwater		Date/Time	Height (feet)	Elevation of groundwater		Date/Time	Height (feet)	Elevation of groundwater
6/2/2019 4:13	2.112	458.85		6/2/2019 4:13	9.477	458.79				
6/2/2019 16:13	2.137	458.87		6/2/2019 16:13	9.504	458.82				
6/3/2019 4:13	2.156	458.89		6/3/2019 4:13	9.528	458.84				
6/3/2019 16:13	2.18	458.92		6/3/2019 16:13	9.549	458.86				
6/4/2019 4:13	2.198	458.93		6/4/2019 4:13	9.568	458.88				
6/4/2019 16:13	2.224	458.96		6/4/2019 16:13	9.59	458.90				
6/5/2019 4:13	2.235	458.97		6/5/2019 4:13	9.61	458.92				
6/5/2019 16:13	2.257	458.99		6/5/2019 16:13	9.62	458.93				
6/6/2019 4:13	2.266	459.00		6/6/2019 4:13	9.635	458.95				
6/6/2019 16:13	2.283	459.02		6/6/2019 16:13	9.643	458.96				
6/7/2019 4:13	2.288	459.02		6/7/2019 4:13	9.652	458.97				
6/7/2019 16:13	2.301	459.04		6/7/2019 16:13	9.662	458.98				
6/8/2019 4:13	2.306	459.04		6/8/2019 4:13	9.669	458.98				
6/8/2019 16:13	2.317	459.05		6/8/2019 16:13	9.672	458.99				
6/9/2019 4:13	2.316	459.05		6/9/2019 4:13	9.681	458.99				
6/9/2019 16:13	2.329	459.06		6/9/2019 16:13	9.695	459.01				
6/10/2019 4:13	2.342	459.08		6/10/2019 4:13	9.712	459.03				
6/10/2019 16:13	2.355	459.09		6/10/2019 16:13	9.72	459.03				
6/11/2019 4:13	2.365	459.10		6/11/2019 4:13	9.732	459.05				
6/11/2019 16:13	2.376	459.11		6/11/2019 16:13	9.736	459.05				
6/12/2019 4:13	2.378	459.11		6/12/2019 4:13	9.744	459.06				
6/12/2019 16:13	2.391	459.13		6/12/2019 16:13	9.747	459.06				
6/13/2019 4:13	2.39	459.13		6/13/2019 4:13	9.757	459.07				
6/13/2019 16:13	2.402	459.14		6/13/2019 16:13	9.764	459.08				
6/14/2019 4:13	2.407	459.14		6/14/2019 4:13	9.781	459.09				
6/14/2019 16:13	2.422	459.16		6/14/2019 16:13	9.78	459.09				
6/15/2019 4:13	2.416	459.15		6/15/2019 4:13	9.786	459.10				
6/15/2019 16:13	2.428	459.16		6/15/2019 16:13	9.794	459.11				
6/16/2019 4:13	2.437	459.17		6/16/2019 4:13	9.808	459.12				
6/16/2019 16:13	2.451	459.19		6/16/2019 16:13	9.812	459.13				
6/17/2019 4:13	2.452	459.19		6/17/2019 4:13	9.823	459.14				
6/17/2019 16:13	2.455	459.19		6/17/2019 16:13	9.822	459.14				
6/18/2019 4:13	2.457	459.19		6/18/2019 4:13	9.825	459.14				
6/18/2019 16:13	2.463	459.20		6/18/2019 16:13	9.827	459.14				
6/19/2019 4:13	2.463	459.20		6/19/2019 4:13	9.834	459.15				
6/19/2019 16:13	2.477	459.21		6/19/2019 16:13	9.841	459.15				
6/20/2019 4:13	2.478	459.21		6/20/2019 4:13	9.855	459.17				
6/20/2019 16:13	2.495	459.23		6/20/2019 16:13	9.866	459.18				
6/21/2019 4:13	2.501	459.24		6/21/2019 4:13	9.878	459.19				
6/21/2019 16:13	2.521	459.26		6/21/2019 16:13	9.888	459.20				
6/22/2019 4:13	2.519	459.25		6/22/2019 4:13	9.892	459.21				
6/22/2019 16:13	2.527	459.26		6/22/2019 16:13	9.898	459.21				
6/23/2019 4:13	2.532	459.27		6/23/2019 4:13	9.917	459.23				
6/23/2019 16:13	2.549	459.28		6/23/2019 16:13	9.935	459.25				
6/24/2019 4:13	2.566	459.30		6/24/2019 4:13	9.948	459.26				
6/24/2019 16:13	2.582	459.32		6/24/2019 16:13	9.962	459.28				
6/25/2019 4:13	2.59	459.33		6/25/2019 4:13	9.969	459.28				
6/25/2019 16:13	2.601	459.34		6/25/2019 16:13	9.977	459.29				
6/26/2019 4:13	2.603	459.34		6/26/2019 4:13	9.992	459.31				
6/26/2019 16:13	2.623	459.36		6/26/2019 16:13	10.004	459.32				
6/27/2019 4:13	2.629	459.36		6/27/2019 4:13	10.018	459.33				
6/27/2019 16:13	2.643	459.38		6/27/2019 16:13	10.027	459.34				
6/28/2019 4:13	2.653	459.39		6/28/2019 4:13	10.036	459.35				
6/28/2019 16:13	2.666	459.40		6/28/2019 16:13	10.044	459.36				
6/29/2019 4:13	2.667	459.40		6/29/2019 4:13	10.056	459.37				
6/29/2019 16:13	2.684	459.42		6/29/2019 16:13	10.066	459.38				
6/30/2019 4:13	2.691	459.43		6/30/2019 4:13	10.078	459.39				
6/30/2019 16:13	2.698	459.43		6/30/2019 16:13	10.088	459.40				
7/1/2019 4:13	2.709	459.44		7/1/2019 4:13	10.102	459.42				
7/1/2019 16:13	2.73	459.47		7/1/2019 16:13	10.12	459.43				
7/2/2019 4:13	2.742	459.48		7/2/2019 4:13	10.138	459.45				
7/2/2019 16:13	2.762	459.50		7/2/2019 16:13	10.153	459.47				
7/3/2019 4:13	2.77	459.51		7/3/2019 4:13	10.16	459.47				
7/3/2019 16:13	2.782	459.52		7/3/2019 16:13	10.165	459.48				
7/4/2019 4:13	2.784	459.52		7/4/2019 4:13	10.172	459.49				
7/4/2019 16:13	2.795	459.53		7/4/2019 16:13	10.187	459.50				
7/5/2019 4:13	2.805	459.54		7/5/2019 4:13	10.201	459.51				

MW-11 - Sensor 3		MW 1 Rim Elevation-470.6091 *Sensor Elevation-456.7351		MW-20 - Sensor 1		MW-20 Rim Elevation-470.2102 *Transducer Elevation- 425.34		MW-1		MW7 Rim Elevation-472-5176 *Transducer Elevation- 451.4896	
Date/Time	Height (feet)	Elevation of groundwater		Date/Time	Height (feet)	Elevation of groundwater		Date/Time	Height (feet)	Elevation of groundwater	
9/10/2019 11:23	4.713	461.37		9/10/2019 11:47	12.06	461.17					
9/10/2019 23:23	4.696	461.35		9/10/2019 23:47	12.043	461.15					
9/11/2019 11:23	4.679	461.33		9/11/2019 11:47	12.031	461.14					
9/11/2019 23:23	4.696	461.35		9/11/2019 23:47	12.045	461.15					
9/12/2019 11:23	4.695	461.35		9/12/2019 11:47	12.043	461.15					
9/12/2019 23:23	4.672	461.32		9/12/2019 23:47	12.017	461.12					
9/13/2019 11:23	4.636	461.29		9/13/2019 11:47	11.977	461.08					
9/13/2019 23:23	4.586	461.24		9/13/2019 23:47	11.931	461.04					
9/14/2019 11:23	4.537	461.19		9/14/2019 11:47	11.887	460.99					
9/14/2019 23:23	4.535	461.19		9/14/2019 23:47	11.885	460.99					
9/15/2019 11:23	4.563	461.22		9/15/2019 11:47	11.91	461.02					
9/15/2019 23:23	4.557	461.21		9/15/2019 23:47	11.895	461.00					
9/16/2019 11:23	4.497	461.15		9/16/2019 11:47	11.843	460.95					
9/16/2019 23:23	4.475	461.13		9/16/2019 23:47	11.824	460.93					
9/17/2019 11:23	4.456	461.11		9/17/2019 11:47	11.805	460.91					
9/17/2019 23:23	4.46	461.11		9/17/2019 23:47	11.809	460.92					
9/18/2019 11:23	4.485	461.14		9/18/2019 11:47	11.827	460.93					
9/18/2019 23:23	4.423	461.08		9/18/2019 23:47	11.769	460.88					
9/19/2019 11:23	4.392	461.04		9/19/2019 11:47	11.741	460.85					
9/19/2019 23:23	4.415	461.07		9/19/2019 23:47	11.765	460.87					
9/20/2019 11:23	4.443	461.10		9/20/2019 11:47	11.787	460.89					
9/20/2019 23:23	4.425	461.08		9/20/2019 23:47	11.769	460.88					
9/21/2019 11:23	4.372	461.02		9/21/2019 11:47	11.722	460.83					
9/21/2019 23:23	4.363	461.02		9/21/2019 23:47	11.712	460.82					
9/22/2019 11:23	4.36	461.01		9/22/2019 11:47	11.705	460.81					
9/22/2019 23:23	4.377	461.03		9/22/2019 23:47	11.722	460.83					
9/23/2019 11:23	4.352	461.00		9/23/2019 11:47	11.7	460.81					
9/23/2019 23:23	4.325	460.98		9/23/2019 23:47	11.669	460.78					
9/24/2019 11:23	4.296	460.95		9/24/2019 11:47	11.648	460.75					
9/24/2019 23:23	4.278	460.93		9/24/2019 23:47	11.625	460.73					
9/25/2019 11:23	4.282	460.93		9/25/2019 11:47	11.631	460.74					
9/25/2019 23:23	4.237	460.89		9/25/2019 23:47	11.582	460.69					
9/26/2019 11:23	4.198	460.85		9/26/2019 11:47	11.543	460.65					
9/26/2019 23:23	4.182	460.83		9/26/2019 23:47	11.53	460.64					
9/27/2019 11:23	4.173	460.83		9/27/2019 11:47	11.517	460.62					
9/27/2019 23:23	4.18	460.83		9/27/2019 23:47	11.522	460.63					
9/28/2019 11:23	4.161	460.81		9/28/2019 11:47	11.501	460.61					
9/28/2019 23:23	4.178	460.83		9/28/2019 23:47	11.524	460.63					
9/29/2019 11:23	4.157	460.81		9/29/2019 11:47	11.495	460.60					
9/29/2019 23:23	4.129	460.78		9/29/2019 23:47	11.468	460.57					
9/30/2019 11:23	4.114	460.77		9/30/2019 11:47	11.458	460.56					
9/30/2019 23:23	4.115	460.77		9/30/2019 23:47	11.456	460.56					
10/1/2019 11:23	4.11	460.76		10/1/2019 11:47	11.451	460.56					
10/1/2019 23:23	4.088	460.74		10/1/2019 23:47	11.428	460.53					
10/2/2019 11:23	4.13	460.78		10/2/2019 11:47	11.477	460.58					
10/2/2019 23:23	4.186	460.84		10/2/2019 23:47	11.536	460.64					
10/3/2019 11:23	4.221	460.87		10/3/2019 11:47	11.566	460.67					
10/3/2019 23:23	4.242	460.89		10/3/2019 23:47	11.588	460.69					
10/4/2019 11:23	4.286	460.94		10/4/2019 11:47	11.619	460.73					
10/4/2019 23:23	4.271	460.92		10/4/2019 23:47	11.613	460.72					
10/5/2019 11:23	4.295	460.95		10/5/2019 11:47	11.639	460.75					
10/5/2019 23:23	4.309	460.96		10/5/2019 23:47	11.645	460.75					
10/6/2019 11:23	4.302	460.95		10/6/2019 11:47	11.634	460.74					
10/6/2019 23:23	4.243	460.90		10/6/2019 23:47	11.575	460.68					
10/7/2019 11:23	4.222	460.87		10/7/2019 11:47	11.562	460.67					
10/7/2019 23:23	4.238	460.89		10/7/2019 23:47	11.574	460.68					
10/8/2019 11:23	4.239	460.89		10/8/2019 11:47	11.572	460.68					
10/8/2019 23:23	4.231	460.88		10/8/2019 23:47	11.564	460.67					
10/9/2019 11:23	4.223	460.88		10/9/2019 11:47	11.553	460.66					
10/9/2019 23:23	4.209	460.86		10/9/2019 23:47	11.54	460.65					
10/10/2019 11:23	4.219	460.87		10/10/2019 11:47	11.555	460.66					
10/10/2019 23:23	4.226	460.88		10/10/2019 23:47	11.558	460.66					
10/11/2019 11:23	4.234	460.89		10/11/2019 11:47	11.567	460.67					
10/11/2019 23:23	4.19	460.84		10/11/2019 23:47	11.522	460.63					
10/12/2019 11:23	4.154	460.81		10/12/2019 11:47	11.489	460.60					
10/12/2019 23:23	4.149	460.80		10/12/2019 23:47	11.487	460.59					
10/13/2019 11:23	4.142	460.79		10/13/2019 11:47	11.475	460.58					

MW-11 - Sensor 3		MW 1 Rim Elevation-470.6091 *Sensor Elevation-456.7351		MW-20 - Sensor 1		MW-20 Rim Elevation-470.2102 *Transducer Elevation- 425.34		MW-1		MW7 Rim Elevation-472-5176 *Transducer Elevation- 451.4896	
Date/Time	Height (feet)	Elevation of groundwater		Date/Time	Height (feet)	Elevation of groundwater		Date/Time	Height (feet)	Elevation of groundwater	
10/13/2019 23:23	4.13	460.78		10/13/2019 23:47	11.463	460.57					
10/14/2019 11:23	4.125	460.78		10/14/2019 11:47	11.456	460.56					
10/14/2019 23:23	4.127	460.78		10/14/2019 23:47	11.458	460.56					
10/15/2019 11:23	4.119	460.77		10/15/2019 11:47	11.446	460.55					
10/15/2019 23:23	4.079	460.73		10/15/2019 23:47	11.408	460.51					
10/16/2019 11:23	4.049	460.70		10/16/2019 11:47	11.378	460.48					
10/16/2019 23:23	4.026	460.68		10/16/2019 23:47	11.354	460.46					
10/17/2019 11:23	3.997	460.65		10/17/2019 11:47	11.321	460.43					
10/17/2019 23:23	3.962	460.61		10/17/2019 23:47	11.289	460.40					
10/18/2019 11:23	3.929	460.58		10/18/2019 11:47	11.25	460.36					
10/18/2019 23:23	3.889	460.54		10/18/2019 23:47	11.216	460.32					
10/19/2019 11:23	3.863	460.52		10/19/2019 11:47	11.19	460.30					
10/19/2019 23:23	3.838	460.49		10/19/2019 23:47	11.166	460.27					
10/20/2019 11:23	3.811	460.46		10/20/2019 11:47	11.138	460.24					
10/20/2019 23:23	3.798	460.45		10/20/2019 23:47	11.125	460.23					
10/21/2019 11:23	3.774	460.43		10/21/2019 11:47	11.099	460.21					
10/21/2019 23:23	3.749	460.40		10/21/2019 23:47	11.075	460.18					
10/22/2019 11:23	3.712	460.36		10/22/2019 11:47	11.041	460.15					
10/22/2019 23:23	3.703	460.36		10/22/2019 23:47	11.032	460.14					
10/23/2019 11:23	3.741	460.39		10/23/2019 11:47	11.066	460.17					
10/23/2019 23:23	3.688	460.34		10/23/2019 23:47	11.007	460.11					
10/24/2019 11:23	3.648	460.30		10/24/2019 11:47	10.97	460.08					
10/24/2019 23:23	3.602	460.25		10/24/2019 23:47	10.93	460.04					
10/25/2019 11:23	3.554	460.21		10/25/2019 11:47	10.879	459.99					
10/25/2019 23:23	3.53	460.18		10/25/2019 23:47	10.86	459.97					
10/26/2019 11:23	3.523	460.18		10/26/2019 11:47	10.853	459.96					
10/26/2019 23:23	3.523	460.18		10/26/2019 23:47	10.849	459.96					
10/27/2019 11:23	3.508	460.16		10/27/2019 11:47	10.837	459.94					
10/27/2019 23:23	3.499	460.15		10/27/2019 23:47	10.82	459.93					
10/28/2019 11:23	3.489	460.14		10/28/2019 11:47	10.813	459.92					
10/28/2019 23:23	3.455	460.11		10/28/2019 23:47	10.779	459.89					
10/29/2019 11:23	3.439	460.09		10/29/2019 11:47	10.762	459.87					
10/29/2019 23:23	3.419	460.07		10/29/2019 23:47	10.744	459.85					
10/30/2019 11:23	3.386	460.04		10/30/2019 11:47	10.712	459.82					
10/30/2019 23:23	3.356	460.01		10/30/2019 23:47	10.682	459.79					
10/31/2019 11:23	3.354	460.01		10/31/2019 11:47	10.681	459.79					
10/31/2019 23:23	3.348	460.00		10/31/2019 23:47	10.672	459.78					
11/1/2019 11:23	3.321	459.97		11/1/2019 11:47	10.646	459.75					
11/1/2019 23:23	3.297	459.95		11/1/2019 23:47	10.619	459.73					
11/2/2019 11:23	3.269	459.92		11/2/2019 11:47	10.594	459.70					
11/2/2019 23:23	3.257	459.91		11/2/2019 23:47	10.581	459.69					
11/3/2019 11:23	3.238	459.89		11/3/2019 11:47	10.565	459.67					
11/3/2019 23:23	3.221	459.87		11/3/2019 23:47	10.545	459.65					
11/4/2019 11:23	3.199	459.85		11/4/2019 11:47	10.525	459.63					
11/4/2019 23:23	3.183	459.84		11/4/2019 23:47	10.508	459.61					
11/5/2019 11:23	3.174	459.83		11/5/2019 11:47	10.499	459.61					
11/5/2019 23:23	3.161	459.81		11/5/2019 23:47	10.481	459.59					
11/6/2019 11:23	3.151	459.80		11/6/2019 11:47	10.471	459.58					
11/6/2019 23:23	3.128	459.78		11/6/2019 23:47	10.452	459.56					
11/7/2019 11:23	3.104	459.76		11/7/2019 11:47	10.428	459.53					
11/7/2019 23:23	3.074	459.73		11/7/2019 23:47	10.402	459.51					
11/8/2019 11:23	3.058	459.71		11/8/2019 11:47	10.38	459.49					
11/8/2019 23:23	3.037	459.69		11/8/2019 23:47	10.367	459.47					
11/9/2019 11:23	3.024	459.68		11/9/2019 11:47	10.347	459.45					
11/9/2019 23:23	3	459.65		11/9/2019 23:47	10.323	459.43					
11/10/2019 11:23	2.981	459.63		11/10/2019 11:47	10.303	459.41					
11/10/2019 23:23	2.964	459.62		11/10/2019 23:47	10.286	459.39					
11/11/2019 11:23	2.949	459.60		11/11/2019 11:47	10.272	459.38					
11/11/2019 23:23	2.937	459.59		11/11/2019 23:47	10.263	459.37					
11/12/2019 11:23	2.917	459.57		11/12/2019 11:47	10.237	459.34					
11/12/2019 23:23	2.899	459.55		11/12/2019 23:47	10.229	459.34					
11/13/2019 11:23	2.899	459.55		11/13/2019 11:47	10.231	459.34					
11/13/2019 23:23	2.902	459.55		11/13/2019 23:47	10.237	459.34					
11/14/2019 11:23	2.896	459.55		11/14/2019 11:47	10.23	459.34					
11/14/2019 23:23	2.876	459.53		11/14/2019 23:47	10.206	459.31					
11/15/2019 11:23	2.859	459.51		11/15/2019 11:47	10.198	459.30					
11/15/2019 23:23	2.856	459.51		11/15/2019 23:47	10.188	459.29					

MW-11 - Sensor 3		MW 1 Rim Elevation-470.6091 *Sensor Elevation-456.7351		MW-20 - Sensor 1		MW-20 Rim Elevation-470.2102 *Transducer Elevation- 425.34		MW-1		MW7 Rim Elevation-472-5176 *Transducer Elevation- 451.4896	
Date/Time	Height (feet)	Elevation of groundwater		Date/Time	Height (feet)	Elevation of groundwater		Date/Time	Height (feet)	Elevation of groundwater	
11/16/2019 11:23	2.851	459.50		11/16/2019 11:47	10.188	459.29					
11/16/2019 23:23	2.851	459.50		11/16/2019 23:47	10.186	459.29					
11/17/2019 11:23	2.827	459.48		11/17/2019 11:47	10.163	459.27					
11/17/2019 23:23	2.815	459.47		11/17/2019 23:47	10.153	459.26					
11/18/2019 11:23	2.805	459.46		11/18/2019 11:47	10.144	459.25					
11/18/2019 23:23	2.797	459.45		11/18/2019 23:47	10.136	459.24					
11/19/2019 11:23	2.824	459.48		11/19/2019 11:47	10.159	459.27					
11/19/2019 23:23	2.818	459.47		11/19/2019 23:47	10.151	459.26					
11/20/2019 11:23	2.803	459.46		11/20/2019 11:47	10.137	459.24					
11/20/2019 23:23	2.8	459.45		11/20/2019 23:47	10.137	459.24					
11/21/2019 11:23	2.789	459.44		11/21/2019 11:47	10.123	459.23					
11/21/2019 23:23	2.812	459.46		11/21/2019 23:47	10.148	459.25					
11/22/2019 11:23	2.797	459.45		11/22/2019 11:47	10.133	459.24					
11/22/2019 23:23	2.774	459.43		11/22/2019 23:47	10.111	459.22					
11/23/2019 11:23	2.759	459.41		11/23/2019 11:47	10.102	459.21					
11/23/2019 23:23	2.76	459.41		11/23/2019 23:47	10.101	459.21					
11/24/2019 11:23	2.751	459.40		11/24/2019 11:47	10.092	459.20					
11/24/2019 23:23	2.74	459.39		11/24/2019 23:47	10.079	459.19					
11/25/2019 11:23	2.74	459.39		11/25/2019 11:47	10.082	459.19					
11/25/2019 23:23	2.744	459.40		11/25/2019 23:47	10.087	459.19					
11/26/2019 11:23	2.761	459.41		11/26/2019 11:47	10.105	459.21					
11/26/2019 23:23	2.766	459.42		11/26/2019 23:47	10.109	459.22					
11/27/2019 11:23	2.79	459.44		11/27/2019 11:47	10.13	459.24					
11/27/2019 23:23	2.801	459.45		11/27/2019 23:47	10.142	459.25					
11/28/2019 11:23	2.757	459.41		11/28/2019 11:47	10.098	459.20					
11/28/2019 23:23	2.743	459.40		11/28/2019 23:47	10.083	459.19					
11/29/2019 11:23	2.758	459.41		11/29/2019 11:47	10.098	459.20					
11/29/2019 23:23	2.758	459.41		11/29/2019 23:47	10.098	459.20					
11/30/2019 11:23	2.751	459.40		11/30/2019 11:47	10.087	459.19					
11/30/2019 23:23	2.741	459.39		11/30/2019 23:47	10.084	459.19					
12/1/2019 11:23	2.765	459.42		12/1/2019 11:47	10.104	459.21					
12/1/2019 23:23	2.767	459.42		12/1/2019 23:47	10.106	459.21					
12/2/2019 11:23	2.747	459.40		12/2/2019 11:47	10.084	459.19					

Ryan Peterson

From: Mick J. Neary <MJNeary@gvea.com>
Sent: Tuesday, December 10, 2019 10:09 AM
To: Ryan Peterson
Subject: RE: BESS

Ryan,

We were out at the BESS last Friday 12/6/19. The lock on MW-20 was frozen or rusted but I couldn't open it so I cut it and replaced it with a combo lock. The combo is 2006, same as the # on the key.

point, northing, easting, elevation, description

103, 3959256.4942, 1994446.9962, 470.2102, MW-20
102, 3959496.0032, 1994858.9503, 470.6091, MW-11
101, 3959405.4095, 1994863.7593, 472.5176, MW-1
100, 3959310.6310, 1994631.8562, 471.7779, BASE

Let me know if you need anything else.

Thanks,
Mick

From: Ryan Peterson <rpeterson@tpeci.com>
Sent: Wednesday, November 27, 2019 9:12 AM
To: Mick J. Neary <MJNeary@gvea.com>; Larry Peterson <lpeterson@tpeci.com>
Cc: Naomi M. Knight <nmknight@gvea.com>
Subject: RE: BESS

[CAUTION: This email originated from outside of the organization. Do not click links or open attachments unless you recognize the sender and know the content is safe.]

Good morning,

I was planning on pulling the transducers either this afternoon, or on Monday.

Thank you,
Ryan Peterson
TPECI

From: Mick J. Neary <MJNeary@gvea.com>
Sent: Wednesday, November 27, 2019 8:51 AM
To: Larry Peterson <lpeterson@tpeci.com>
Cc: Ryan Peterson <rpeterson@tpeci.com>; Naomi M. Knight <nmknight@gvea.com>
Subject: RE: BESS

Hi Larry,

I'll check with our guys but it will have to be next week. As far as using Lounsbury to survey, we use them for other projects so I know its not an issue, but I will defer to Naomi on that one. What is the time frame you are looking at to pull the transducers?

Mick

From: Larry Peterson <lpeterson@tpeci.com>
Sent: Tuesday, November 26, 2019 2:34 PM
To: Mick J. Neary <MJNeary@gvea.com>
Cc: Ryan Peterson <rpeterson@tpeci.com>
Subject: BESS

[CAUTION: This email originated from outside of the organization. Do not click links or open attachments unless you recognize the sender and know the content is safe.]

Hi Mick,

Ryan will be pulling the pressure transducers soon. Does GVEA have the elevation of the top of the well casing for monitoring wells 1, 11, and 20? We will need that information to develop the groundwater gradient. If you don't have it, does GVEA have their own surveyors? If yes, can they do the work? If not, should we hire Lounsbury to survey the wells? Craig rents from us and is married to Naomi so I don't want to get into a conflict of interest situation.

Larry

Laurence A. Peterson
Operations Manager
Travis/Peterson Environmental Consulting, Inc.
329 2nd Street
Fairbanks, Alaska 99701
Phone 907-455-7225
Fax 907-455-7228