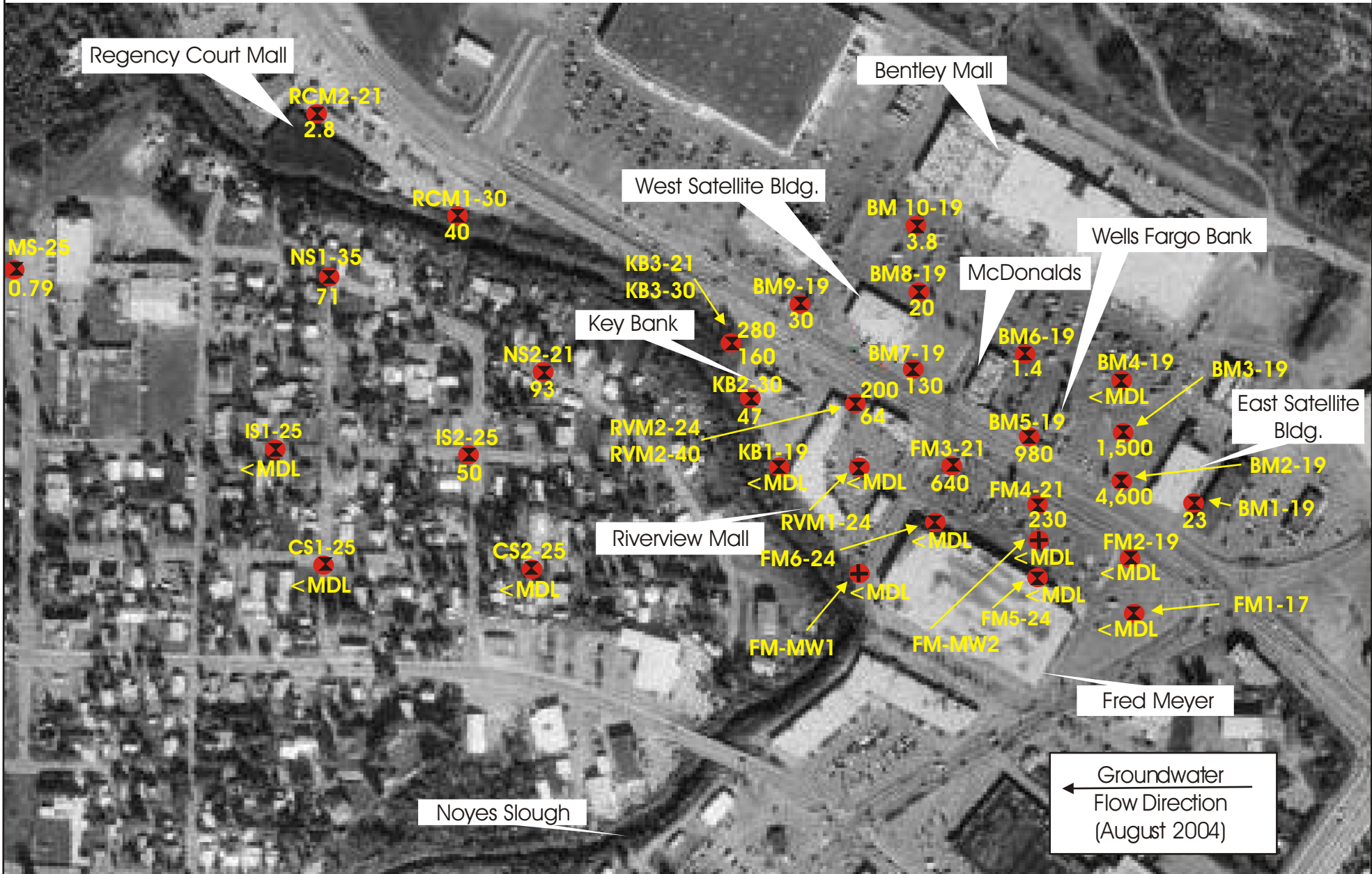


PCE Distribution - January 2005



— Grab Sample Location
 (Numerical Value) — Results/PCE in Parts per Billion
 <MDL — Less Than Mean Detection Limit
 — Permanent Monitoring Well

XX1-19
 Sample ID Sample Interval Depth (feet bgs)

Alaska Resources &
 Environmental Services
 January 2005