



Stantec Consulting Services Inc.

3900 C Street, Suite 902

Anchorage AK 99503

December 10, 2024

Stantec Project Number: 203723642

Paula Sime, PG
Manager, Environmental Services
7-Eleven, Inc.
P.O. Box 1026
Temecula, California 92593

RE: **2025 Corrective Action Work Plan**
7-Eleven Store 43003 (Former Tesoro North Store (TNS) #112)
3392 Badger Road, North Pole, Alaska
ADEC Facility ID #11116; ADEC Hazard #24476; ADEC File #100.26.159

Dear Ms. Sime:

This letter presents the 2025 (calendar year) Corrective Action Plan (CAP) for the monitoring and remediation of petroleum contamination at the above referenced site. The 2025 CAP was prepared by Stantec Consulting Services, Inc. (Stantec) on behalf of 7-Eleven, Inc. (7-Eleven) for 7-Eleven Store 43003 (former Tesoro Northstore (TNS) #112) located in North Pole, Alaska.

This 2025 CAP will be presented at the annual work session with the Alaska Department of Environmental Conservation (ADEC), 7-Eleven, and Stantec. The work session is scheduled for December 10, 2024, and will be presented by Stantec on behalf of 7-Eleven to Pete Campbell, ADEC representative, virtually via Microsoft TEAMS app.

Attached to this letter are the following items associated with the completion of the 2024 CAP tasks: Location and Vicinity Map, Site Map with Analytical Data Results (October 2024 GWM Event), and Analytical Data Results Tables of Historical Monitoring Events. The site plans, sampling test results and additional site documents for the subject site will be included in a PowerPoint presentation that will be delivered by Stantec during the December 10 work session.

The following sections provide a summary of the work plan tasks that were completed under the current 2024 CAP followed by a summary of the proposed work plan tasks for the 2025 CAP.

2024 CAP Work Plan Tasks

- Task 1 – Groundwater Monitoring
 - ✓ This task was completed in accordance with the approved 2024 CAP.
- Task 2 – O&M Chemical Oxidation (Chemox) Treatment System
 - ✓ This task was completed in accordance with the approved 2024 CAP. The schedule of the first quarter 2024 chemox injection was altered to account for the late startup of the chemox injection program due to the impact of winter conditions.

Proposed Work Plan Tasks for 2025

The following table summarizes the proposed tasks and implementation schedule for the 2025 CAP:

2025 CAP Work Plan Tasks and Schedule

Work Plan Task for 2025		1 st Quarter	2 nd Quarter	3 rd Quarter	4 th Quarter
Task 1	Monitoring Wells: MW-2, MW-3, MW-6, MW-10, MW-17-2 and MW-17-5.		V, G, D, P, I & S	V, G, D, P, I, & S	
	Monitoring Wells MW-1 and MW-4			V, G, D, P, I, & S	
	Monitoring Wells MW-3, MW-17-2 and MW-17-5			V, G, D, P, I & S	
Task 2	Chemical Oxidation Treatment		✓	✓	

Key:

- AK – Alaska Test Method
- D – Diesel range organics by AK102.
- G – Gasoline range organics by AK101.
- I – Intrinsic indicators including dissolved oxygen, specific conductance, oxygen-reduction potential, pH, and temperature.
- O&M – Operation and Maintenance
- P – Polynuclear aromatic hydrocarbons (PAHs), i.e., semi-volatile organic compounds associated with petroleum fuel, by EPA Test Method 8270D-SIM (Selective Ion Monitoring).
- S – Sodium analyzed by Metals (ICP) Method 6010C.
- V – Volatile organic compounds by EPA Test Method 8260C.

- Task 1 – Groundwater Monitoring

Monitoring of the on-site groundwater monitoring wells will be conducted on a variable frequency as outlined in 2025 Work Plan Schedule shown above. Sampling schedules, well locations and analyses are referenced in the 2025 Work Plan Schedule. The on-site monitoring wells will be sampled to assess treatment impact on the groundwater table.

- Task 2 – Chemical Oxidation (Chemox) Treatment

Stantec proposes to provide chemox treatment of the petroleum contaminated soil and groundwater located in the source area of the former underground storage tank (UST) system. The injection of chemox will occur in the second and third quarters of the year. Chemox injection may occur in the first part of the fourth quarter if weather permits. Subject to suitable (non-freezing) weather conditions, Stantec will attempt to inject chemox monthly throughout the year with the exception of the first quarter.

The chemox will be injected into the following 4-inch diameter injection wells: IW-2022A, IW-2022B, IW-2022C, and IW-2022D. Approximately 100 gallons of a prepared solution of potable water and 110 pounds of Klozur One[®] will be manually injected via gravity. Following the injection of the chemox solution, a minimum of 100 gallons of potable water will be injected into each injection well to provide a means of “hydraulically pushing” the chemox solution into the subsurface formation. Also, the wells will be analyzed for sodium to check on the distribution/migration of the oxidant.

The Corrective Action Work Plan for the year 2025 will be implemented by Stantec on behalf of 7-Eleven. Groundwater monitoring will be conducted to track migration and trends of contaminants that are present at the site.

All sampling activities will be completed in accordance with ADEC’s *Underground Storage Tanks Procedures Manual– Standard Sampling Procedures* (March 22, 2017). The methods that will be used for conducting a monitoring event, unless otherwise noted in the monitoring report, will include:

- The static water levels in the monitoring wells will be measured with respect to the top of each well casing. The elevation of the static water level will be based on an arbitrary datum established on-site during a vertical control survey that will be completed by Stantec on an annual basis. The survey will be performed during the summer after the seasonal frost layer thaws.
- The monitoring wells will be purged of a minimum of three well bore volumes prior to collecting the water samples. A new, disposable, PET (polyethylene) bailer will be used to sample each well. The first bail of water removed from each well will be examined for petroleum odor, sheen, and any other unique physical features.
- Water samples will be collected in laboratory-supplied sample containers. The samples will be delivered to an ADEC-approved laboratory in accordance with standard chain-of-custody procedures.
- Additional water samples will be collected from the monitoring wells after the well has been purged, as described above, and tested in the field for chemical and physical intrinsic parameters listed in the 2025 Work Plan Schedule shown above.





COLONIAL PLAZA MALL
DRINKING WELL,
MORNING STAR SUB. TRACT D
APPROXIMATELY 180°
NORTH OF THIS POINT

SITE DATA COMPARED TO ADEC Groundwater Cleanup Levels (GCLs)		ND NOT DETECTED		124-TMB 0.056 mg/L	
-	NOT SAMPLED	135-TMB	0.06 mg/L	BENZENE	0.0046 mg/L
50	SAMPLED & UNDER GCL	DRO	1.5 mg/L	ETHYLBENZENE	0.015 mg/L
100	SAMPLED & OVER GCL	GRD	2.2 mg/L	NAPHTHALENE	0.0017 mg/L
EE	FREE PRODUCT DISPLAYED IN mg/L	SODIUM	1.1 mg/L	TOLUENE	0.19 mg/L
		XYLENES	0.19 mg/L		

MW-10	10/2/24
124-TMB	U(0.00100)
135-TMB	U(0.00100)
BENZENE	U(0.00100)
DRO	0.392
ETHYLBENZENE	U(0.00100)
GRD	0.0402
NAPHTHALENE	U(0.000250)
SODIUM	12.8
TOLUENE	U(0.00100)
XYLENES	U(0.00300)

MW-3	10/2/24
124-TMB	0.111
135-TMB	0.0399
BENZENE	0.00493
DRO	0.837
ETHYLBENZENE	0.126
GRD	1.26
NAPHTHALENE	0.00567
SODIUM	37.5
TOLUENE	0.0328
XYLENES	0.65

MW17-5	10/2/24
124-TMB	0.0017
135-TMB	U(0.00100)
BENZENE	0.0064
DRO	0.621
ETHYLBENZENE	0.0229
GRD	0.219
NAPHTHALENE	0.00116
SODIUM	76.6
TOLUENE	0.0151
XYLENES	0.0229

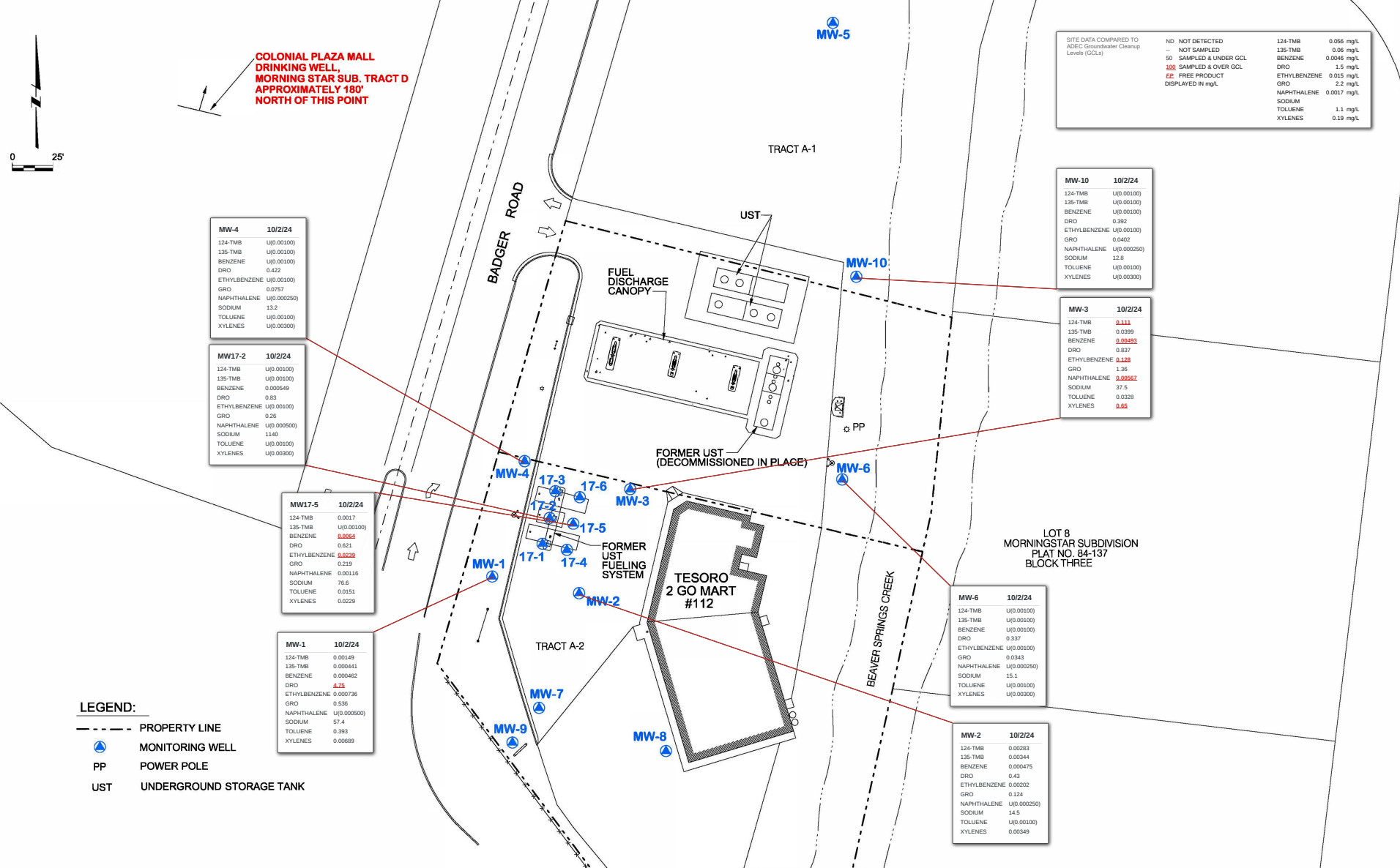
MW-1	10/2/24
124-TMB	0.00149
135-TMB	0.000441
BENZENE	0.000462
DRO	4.25
ETHYLBENZENE	0.000736
GRD	0.536
NAPHTHALENE	U(0.000500)
SODIUM	57.4
TOLUENE	0.393
XYLENES	0.00689

MW-6	10/2/24
124-TMB	U(0.00100)
135-TMB	U(0.00100)
BENZENE	U(0.00100)
DRO	0.337
ETHYLBENZENE	U(0.00100)
GRD	0.0343
NAPHTHALENE	U(0.000250)
SODIUM	15.1
TOLUENE	U(0.00100)
XYLENES	U(0.00300)

MW-2	10/2/24
124-TMB	0.00293
135-TMB	0.00344
BENZENE	0.000475
DRO	0.43
ETHYLBENZENE	0.00202
GRD	0.124
NAPHTHALENE	U(0.000250)
SODIUM	14.5
TOLUENE	U(0.00100)
XYLENES	0.00349

LEGEND:

- PROPERTY LINE
- MONITORING WELL
- POWER POLE
- UNDERGROUND STORAGE TANK



7-Eleven 43003
(Speedway 5310 - Former TNS 112)

Sitemap With Analytical
Data Results

Appendix D: Historical Analytical Data Table

	<i>Well Screen Interval</i>	<i>Ground Water Elevation</i>	<i>124-TMB</i>	<i>135-TMB</i>	<i>Benzene</i>	<i>DRO</i>	<i>Ethylbenzene</i>	<i>GRO</i>	<i>Naphthalene</i>	<i>Sodium</i>	<i>Toluene</i>	<i>Xylenes</i>
Unit	ft	ft	ppm	ppm	ppm	ppm	ppm	ppm	ppm	ppm	ppm	ppm
GW Human Health Cleanup			<u>0.056</u>	<u>0.06</u>	<u>0.0046</u>	<u>1.5</u>	<u>0.015</u>	<u>2.2</u>	<u>0.0017</u>		<u>1.1</u>	<u>0.19</u>
MW17-2												
07/19/2017	--	--	NT	NT	—	—	—	—	U(0.039)	—	—	—
10/30/2018	--	--	—	—	U (0.003)	<u>2.50</u>	<u>0.18</u>	<u>3.90</u>	—	—	U (0.002)	<u>0.90</u>
05/10/2019	--	--	NT	NT	U (0.003)	0.91	0.005100	U (0.25)	U(0.00011)	—	U (0.002)	0.0120
10/22/2019	--	--	—	—	U (0.003)	1.4 H	<u>0.21</u>	<u>3.50</u>	—	—	U (0.002)	<u>0.79</u>
08/18/2020	--	381.54	<u>0.457</u>	<u>0.0880</u>	0.0017 J	<u>1.96</u>	<u>0.08370</u>	1.76	<u>0.0080500</u>	—	U(0.00186 J)	<u>0.32</u>
10/06/2020	--	381.12	NT	NT	0.00132 J	<u>2.43</u>	<u>0.113</u>	2.08	<u>0.0061400</u>	—	U (0.001)	<u>0.591</u>
06/24/2021	--	381.59	<u>0.389</u>	0.05690	0.00163 J	<u>1.58</u>	<u>0.07270</u>	1.36	0.0164 B,J	—	U (0.01)	0.173
10/13/2021	--	--	<u>0.315</u>	<u>0.06920</u>	0.00125 J	<u>1.77</u>	<u>0.05060</u>	1.51	<u>0.0049300</u>	—	0.00253 J	<u>0.197</u>
05/16/2022	--	382.45	<u>0.247</u>	0.03740	0.000632000	1.15	<u>0.03330</u>	0.573	0.000423000	37.5	0.0016500	0.09680
09/26/2022	--	381.46	<u>0.192</u>	0.02510	0.000713000	1.35	<u>0.01760</u>	0.557	0.0012700	207	0.0019500	0.04180
10/26/2022	--	381.04	—	—	0.00053000	1.23	0.0012700	0.118	0.000327000	1230	U(0.00100)	0.000377000
06/07/2023	--	381.65	<u>0.09370</u>	0.01870	0.0010500	1.50	<u>0.01690</u>	0.425	<u>0.0034900</u>	1280	0.000829000	0.03840
07/26/2023	--	381.65	U(0.00100)	U(0.00100)	0.000862000	0.633	0.000272000	U(0.500)	U(0.000250)	1630	U(0.00100)	U(0.00300)
08/16/2023	--	381.03	<u>0.07480</u>	0.02350	<u>0.0083100</u>	0.589	<u>0.05570</u>	1.02	<u>0.0034400</u>	425	0.0073600	0.107
09/27/2023	--	381.24	0.000841000	U(0.00100)	0.000697000	0.263	0.000436000	0.185	0.000773000	1360	U(0.00100)	0.0011300
10/19/2023	--	380.91	U(0.00100)	U(0.00100)	0.00094000	0.234	0.000589000	0.231	0.000247000	1650	0.000295000	U(0.00300)
05/20/2024	--	381.19	<u>0.127</u>	0.02080	0.0010400	0.931	<u>0.02180</u>	0.637	0.0012700	250	0.0023100	0.09570
06/11/2024	--	381.19	U(0.00100)	U(0.00100)	0.000864000	0.725	0.0024900	0.337	U(0.000250)	809	0.000298000	0.000648000
07/29/2024	--	381.67	0.000342000	0.000139000	0.0010300	1.22	0.000631000	0.842	0.000235000	509	U(0.00100)	0.000404000
09/04/2024	--	381.66	U(0.00100)	U(0.00100)	0.000765000	1.04	U(0.00100)	0.202	0.00034000	868	U(0.00100)	U(0.00300)
10/02/2024	--	381.38	U(0.00100)	U(0.00100)	0.000549000	0.83	U(0.00100)	0.26	U(0.000500)	1140	U(0.00100)	U(0.00300)
MW17-5												
07/19/2017	--	--	<u>0.86</u>	NT	—	—	—	—	<u>0.0270</u>	—	—	—
06/14/2018	--	--	0.0440	<u>0.0630</u>	<u>0.0250</u>	0.17	<u>0.0640</u>	1.70	0.001100	—	0.52	<u>0.548</u>
10/30/2018	--	--	—	—	<u>0.0550</u>	0.26	<u>0.15</u>	<u>3.70</u>	—	—	0.21	<u>0.505</u>
05/09/2019	--	--	—	—	0.003200	0.92	<u>0.0160</u>	0.31	—	—	0.002600	0.0480
05/10/2019	--	--	NT	NT	—	—	—	—	0.00014000	—	—	—
10/22/2019	--	--	—	—	<u>0.0220</u>	0.47 H	<u>0.23</u>	<u>3.70</u>	—	—	0.36	<u>0.721</u>
08/18/2020	--	389.82	<u>0.19</u>	<u>0.117</u>	<u>0.03080</u>	0.825	<u>0.151</u>	<u>2.68</u>	<u>0.0072900</u>	—	0.386	<u>0.896</u>
10/06/2020	--	389.43	NT	NT	<u>0.03140</u>	J 0.569	<u>0.158</u>	1.68	<u>0.0047500</u>	—	0.144	<u>0.401</u>

Appendix D: Historical Analytical Data Table

	Well Screen Interval	Ground Water Elevation	124-TMB	135-TMB	Benzene	DRO	Ethylbenzene	GRO	Naphthalene	Sodium	Toluene	Xylenes
Unit	ft	ft	ppm	ppm	ppm	ppm	ppm	ppm	ppm	ppm	ppm	ppm
GW Human Health Cleanup			0.056	0.06	0.0046	1.5	0.015	2.2	0.0017		1.1	0.19
10/13/2021	--	--	0.186	0.09640	0.03870	0.800 J	0.14	2.18	0.002100	—	0.265	0.469
05/16/2022	--	390.70	0.38	0.114	0.196	1.13	0.276	4.07	U(0.000250)	15.4	1.45	1.13
09/26/2022	--	389.74	0.33	0.181	0.151	0.40	0.336	4.16	0.0026400	23.8	1.18	1.37
10/26/2022	--	389.32	—	—	0.02670	0.319	0.09680	1.15	0.0039900	270	0.08140	0.276
04/27/2023	--	389.21	0.0088300	0.01630	0.0041400	0.23	0.02310	0.306	0.000484000	9.11	U(0.00100)	0.05030
06/07/2023	--	389.92	0.06440	0.02320	0.02440	0.311	0.05160	1.43	0.001300	245	0.234	0.182
07/26/2023	--	390.40	0.159	0.06010	0.04650	0.569	0.192	2.11	0.0033700	140	0.221	0.567
08/16/2023	--	389.95	U(0.00100)	U(0.00100)	U(0.00100)	U(0.800)	U(0.00100)	0.181	0.000275000	2050	U(0.00100)	U(0.00300)
09/27/2023	--	389.49	0.07040	0.01320	0.01950	0.432	0.07680	0.638	0.0013900	45.6	0.01030	0.189
10/19/2023	--	389.19	0.01110	0.0032100	0.0058600	U(0.888)	0.02170	0.252	0.000892000	199	0.0041800	0.0400
05/20/2024	--	389.69	0.09320	0.03380	0.01590	0.287	0.109	0.986	U(0.000250)	10.7	0.08460	0.364
06/11/2024	--	389.39	U(0.00100)	U(0.00100)	0.0030800	U(0.800)	0.000419000	0.187	0.000273000	265	0.000399000	U(0.00300)
07/29/2024	--	390.00	0.134	0.05010	0.02470	0.508	0.119	1.58	0.0012300	207	0.09620	0.285
09/04/2024	--	389.87	0.03430	0.0090100	0.0075100	0.892	0.04570	0.70	0.0017800	62.8	0.02650	0.11
10/02/2024	--	389.66	0.001700	U(0.00100)	0.006400	0.621	0.02390	0.219	0.0011600	76.6	0.01510	0.02290
MW-1												
05/30/1997	--	380.52	—	—	0.31	8.50	2.30	42.0	—	—	9.00	10.0
09/11/1997	--	380.90	—	—	0.571	6.05	2.00	55.0	—	—	12.6	9.37
03/12/1998	--	380.56	—	—	0.22	5.10	1.30	37.0	—	—	4.90	6.00
07/21/1998	--	381.15	—	—	0.143	7.59	0.84	22.0	—	—	4.29	3.92
10/12/1998	--	379.42	—	—	0.277	5.98	0.458	16.0	—	—	4.36	1.929
01/21/1999	--	380.44	—	—	0.0360	2.46	0.24	6.80	—	—	1.08	1.208
03/31/1999	--	379.92	—	—	0.0150	0.686	0.151	3.30	—	—	0.297	0.703
07/28/1999	--	380.78	—	—	0.0870	3.89	1.96	46.0	—	—	10.8	9.38
10/15/1999	--	380.55	—	—	0.174	3.74	0.503	15.0	—	—	2.97	2.334
03/10/2000	--	380.16	—	—	0.02160	0.81	0.161	4.70	—	—	0.718	0.783
06/21/2000	--	380.96	—	—	0.0220	1.03	0.284	7.60	—	—	0.931	1.321
09/21/2000	--	380.90	—	—	0.03290	1.61	0.16	5.00	—	—	0.471	0.736
01/25/2001	--	380.54	—	—	0.0170	0.644	0.11	3.69	—	—	0.322	0.523
04/19/2001	--	380.51	—	—	0.01230	0.92	0.0460	1.48	—	—	0.0970	0.221
07/24/2001	--	380.89	—	—	0.01190	0.628	0.104	2.07	—	—	0.209	0.409
01/28/2002	--	380.80	—	—	0.12	0.778	0.604	10.8	—	—	2.07	2.841
04/30/2002	--	381.29	—	—	5.02	2.10	0.284	32.2	—	—	9.48	3.47
09/30/2002	--	381.36	—	—	0.659	1.11	0.05510	3.87	—	—	0.209	0.736
05/12/2003	--	381.34	—	—	0.538	4.84	0.814	44.5	—	—	3.14	20.42
10/09/2003	--	380.72	—	—	0.0043700	U (0.32)	0.0018900	0.697	—	—	0.0057100	0.09980
04/21/2004	--	380.39	—	—	U (0.0005)	U (0.5)	U (0.0005)	U (0.05)	—	—	0.000709000	0.0098400
10/21/2004	--	379.96	—	—	0.0054400	2.41	0.0058500	3.52	—	—	0.0028400	1.46
05/19/2005	--	380.90	—	—	0.000943000	0.48	0.0027200	0.07090	—	—	0.0024800	0.02110

Appendix D: Historical Analytical Data Table

		Well Screen Interval	Ground Water Elevation	124-TMB	135-TMB	Benzene	DRO	Ethylbenzene	GRO	Naphthalene	Sodium	Toluene	Xylenes
Unit	ft	ft	ppm	ppm	ppm	ppm	ppm	ppm	ppm	ppm	ppm	ppm	ppm
GW Human Health Cleanup			0.056	0.06	0.0046	1.5	0.015	2.2	0.0017			1.1	0.19
05/15/2007	--	380.09	—	—	U (0.0005)	U (0.413)	U (0.0005)	U (0.05)	—	—	U (0.0005)	U (0.0015)	
04/29/2008	--	380.16	—	—	U (0.0005)	0.862	U (0.0005)	U (0.05)	—	—	0.00088000	U (0.0015)	
05/12/2009	--	380.84	—	—	U (0.0005)	1.77	0.00077000	U (0.05)	—	—	0.0042700	0.0058600	
06/15/2010	--	380.64	—	—	0.0013400	U (0.420)	0.03570	0.849	—	—	0.02970	0.249	
05/24/2011	--	380.75	—	—	U (0.0005)	0.652	0.0047900	0.08570	—	—	0.00056000	0.03770	
05/22/2012	--	380.53	—	—	0.000701000	U (0.410)	0.07650	1.41	—	—	0.0028400	0.407	
05/21/2013	--	380.84	—	—	0.000845000	0.587	0.125	1.21	—	—	U (0.0005)	0.455	
05/06/2014	--	380.98	—	—	U (0.0005)	0.64	0.002100	U (0.05)	—	—	U (0.0005)	0.0110	
05/26/2015	--	381.36	—	—	U (0.001)	2.30	0.004500	0.21	—	—	0.004400	0.0310	
05/11/2016	--	380.82	—	—	0.00055000	U (0.40)	0.005300	U (0.1)	—	—	0.002600	0.0290	
05/08/2017	--	381.10	—	—	U (0.002)	1.50	0.0340	U (10)	—	—	U (0.002)	0.285	
06/14/2018	--	381.20	—	—	U (0.003)	0.43	0.008600	0.0280	—	—	0.002100	0.0710	
05/09/2019	--	380.58	—	—	U (0.003)	0.42	U (0.003)	U (0.25)	—	—	U (0.002)	0.003400	
10/06/2020	--	381.10	—	—	0.000373 J	1.27	0.0041900	0.153	—	—	0.04280	0.03740	
10/13/2021	--	--	—	—	0.000246 J	1.33	0.003100	0.315	—	—	0.08830	0.03320	
09/26/2022	--	381.43	0.0084400	0.0019400	0.00019000	1.32	0.0025100	0.318	0.000112000	26.8	0.184	0.04050	
10/19/2023	--	380.91	0.00200	0.000374000	0.000226000	U(0.888)	0.0010300	0.135	U(0.000250)	32.6	0.05310	0.01040	
10/02/2024	--	381.34	0.0014900	0.000441000	0.000462000	4.75	0.000736000	0.536	U(0.000500)	57.4	0.393	0.0068900	
MW-2													
05/30/1997	--	388.86	—	—	92.0	8.20	7.10	170	—	—	64.0	33.0	
03/12/1998	--	388.90	—	—	2.80	21.0	13.0	420	—	—	44.0	62.0	
04/19/2001	--	388.85	—	—	2.93	27.4	9.90	216	—	—	52.9	44.5	
07/24/2001	--	389.24	—	—	1.95	18.5	5.30	136	—	—	30.5	33.9	
01/28/2002	--	389.14	—	—	1.23	10.5	7.38	156	—	—	33.4	39.8	
04/30/2002	--	389.66	—	—	0.116	6.90	2.60	51.4	—	—	10.2	17.43	
09/30/2002	--	389.29	—	—	0.656	6.93	2.92	118	—	—	17.9	26.61	
05/12/2003	--	389.74	—	—	0.569	5.68	4.15	90.8	—	—	19.7	25.43	
10/09/2003	--	389.00	—	—	0.25	U (0.32)	2.88	64.9	—	—	6.21	14.2	
04/21/2004	--	388.73	—	—	U (0.005)	7.00	0.114	5.42	—	—	0.116	1.21	
10/21/2004	--	388.03	—	—	0.0051800	1.74	0.109	3.20	—	—	0.08240	0.699	
05/19/2005	--	389.21	—	—	0.0068100	5.49	0.376	7.88	—	—	0.513	1.61	
09/26/2005	--	388.93	—	—	0.01250	3.15	0.422	9.60	—	—	0.58	1.78	
05/15/2006	--	388.80	—	—	0.00058000	1.87	0.05330	1.50	—	—	0.02730	0.223	
11/07/2006	--	388.64	—	—	0.01020	1.35	0.906	17.0	—	—	1.11	3.24	
05/15/2007	--	388.15	—	—	0.0027900	1.90	0.03560	1.99	—	—	0.01990	0.173	
10/16/2007	--	388.15	—	—	0.003200	1.55	0.412	7.61	—	—	0.173	1.03	
04/29/2008	--	388.82	—	—	U (0.0005)	2.09	0.004300	0.453	—	—	U (0.0005)	0.01310	
10/01/2008	--	389.24	—	—	0.0011400	1.38	0.228	3.12	—	—	0.01940	0.739	
05/12/2009	--	389.14	—	—	0.0038500	8.79	0.308	4.00	—	—	0.01140	0.537	

Appendix D: Historical Analytical Data Table

		Well Screen Interval	Ground Water Elevation	124-TMB	135-TMB	Benzene	DRO	Ethylbenzene	GRO	Naphthalene	Sodium	Toluene	Xylenes
Unit	ft	ft	ppm	ppm	ppm	ppm	ppm	ppm	ppm	ppm	ppm	ppm	ppm
GW Human Health Cleanup			0.056	0.06	0.0046	1.5	0.015	2.2	0.0017			1.1	0.19
10/26/2009	--	388.76	—	—	0.0013800	0.738	0.717	4.25	—	—	0.01080		1.48
06/15/2010	--	388.99	—	—	0.0014300	0.51	0.02050	1.32	—	—	0.0013500		0.07290
10/14/2010	--	388.66	—	—	0.0019200	1.49	0.127	4.45	—	—	0.01360		0.70
05/24/2011	--	388.96	—	—	0.0023200	3.04	0.798	6.24	—	—	0.03130		1.32
10/26/2011	--	388.59	—	—	U (0.010)	0.744	0.345	6.53	—	—	U (0.010)		1.11
05/22/2012	--	388.88	—	—	0.0056600	NR	0.179	5.17	—	—	0.0027500		0.503
10/11/2012	--	389.13	—	—	0.00075000	0.655	0.0070700	0.687	—	—	0.01970		0.06140
05/21/2013	--	389.20	—	—	0.0017300	U (0.397)	0.0190	0.388	—	—	0.000638000		0.03250
09/25/2013	--	389.27	—	—	0.001300	0.573	0.269	2.61	—	—	0.0010400		0.481
05/06/2014	--	389.28	—	—	0.003800	0.67	0.15	1.80	—	—	U (0.0005)		0.21
09/17/2014	--	388.88	—	—	0.00072000	U (0.38)	0.0960	1.30	—	—	0.00068000		0.15
05/26/2015	--	389.53	—	—	0.001800	2.50	0.0920	1.60	—	—	U (0.003)		0.21
10/06/2015	--	389.86	—	—	0.0360	0.76	0.29	4.70	—	—	0.003900		0.64
05/11/2016	--	389.13	—	—	0.002300	0.73	0.10	1.20	—	—	U (0.001)		0.14
10/05/2016	--	389.51	—	—	U (0.020)	1.40	0.15	1.70	—	—	U (0.020)		0.22
05/08/2017	--	389.42	—	—	U (0.002)	0.68	0.23	2.80	—	—	U (0.002)		0.639
09/05/2017	--	389.34	—	—	0.001400	0.90	0.0410	1.00	—	—	U (0.001)		0.0810
06/14/2018	--	389.52	—	—	U (0.003)	0.30	0.0770	1.10	—	—	U (0.002)		0.1128
10/30/2018	--	389.22	—	—	U (0.003)	2.40	0.0420	0.69	—	—	U (0.002)		0.0620
05/09/2019	--	388.88	—	—	U (0.003)	0.26	0.0230	0.41	—	—	U (0.002)		0.0510
10/22/2019	--	389.44	—	—	U (0.003)	0.72	0.0170	0.36	—	—	U (0.002)		0.0290
08/18/2020	--	389.80	—	—	0.00074000	0.632	0.0072800	0.203	—	—	0.000886 J		0.01560
10/06/2020	--	389.40	—	—	0.0012100	0.38 J	0.01040	0.277	—	—	0.000531 J		0.02450
06/24/2021	--	389.94	—	—	0.00062 J	0.95	0.0067300	0.85	—	—	0.000453 J		0.01210
10/13/2021	--	--	—	—	0.000702 J	1.49	0.0076800	0.21	—	—	U (0.001)		0.0130
05/16/2022	--	390.75	0.01140	0.0046100	0.000328000	0.38	0.0046800	0.126	U(0.000250)	11.5	U(0.00100)		0.0076800
09/26/2022	--	389.76	0.01250	0.0062700	0.000558000	0.772	0.004600	0.174	0.000397000	15.4	0.000511000		0.0085600
04/27/2023	--	389.22	0.0064400	0.007100	0.000564000	0.719	0.007400	0.16	0.000145000	12.3	U(0.00100)		0.01220
10/19/2023	--	389.22	0.0044400	0.0064300	0.000766000	U(0.888)	0.0037800	0.06960	0.000192000	68.0	U(0.00100)		0.006800
06/11/2024	FP	FP	FP	FP	FP	FP	FP	FP	FP	FP	FP	FP	FP
10/02/2024	--	389.63	0.0028300	0.0034400	0.000475000	0.43	0.0020200	0.124	U(0.000250)	14.5	U(0.00100)		0.0034900
MW-3													
05/30/1997	--	388.79	—	—	23.0	54.0	12.0	380	—	—	69.0		54.0
09/30/2002	--	389.15	—	—	36.6	7.38	3.87	337	—	—	75.3		40.3
05/12/2003	--	389.68	—	—	5.41	2.37	1.44	36.6	—	—	6.45		7.86
10/09/2003	--	388.92	—	—	13.6	U (0.32)	5.31	392	—	—	52.3		49.9
04/21/2004	--	389.34	—	—	0.617	1.90	0.722	20.2	—	—	1.47		5.69
10/21/2004	--	388.26	—	—	9.38	4.96	3.68	157	—	—	29.5		24.3
05/19/2005	--	389.41	—	—	0.846	2.03	1.04	37.3	—	—	5.38		8.90

Appendix D: Historical Analytical Data Table

	Well Screen Interval	Ground Water Elevation	124-TMB	135-TMB	Benzene	DRO	Ethylbenzene	GRO	Naphthalene	Sodium	Toluene	Xylenes
Unit	ft	ft	ppm	ppm	ppm	ppm	ppm	ppm	ppm	ppm	ppm	ppm
GW Human Health Cleanup			0.056	0.06	0.0046	1.5	0.015	2.2	0.0017		1.1	0.19
09/26/2005	--	389.12	—	—	<u>0.04960</u>	<u>3.15</u>	<u>0.261</u>	<u>14.6</u>	—	—	<u>1.27</u>	<u>4.24</u>
05/15/2006	--	388.90	—	—	<u>0.833</u>	<u>4.44</u>	<u>1.63</u>	<u>44.3</u>	—	—	<u>5.05</u>	<u>12.5</u>
11/07/2006	--	388.87	—	—	<u>1.74</u>	<u>4.68</u>	<u>3.74</u>	<u>174</u>	—	—	<u>26.4</u>	<u>31.4</u>
05/15/2007	--	388.37	—	—	<u>0.01240</u>	<u>2.49</u>	<u>0.09420</u>	<u>3.93</u>	—	—	0.136	<u>0.948</u>
10/16/2007	--	387.31	—	—	<u>0.126</u>	<u>7.82</u>	<u>0.272</u>	<u>55.3</u>	—	—	<u>2.30</u>	<u>17.5</u>
04/29/2008	--	388.74	—	—	<u>0.006300</u>	<u>4.71</u>	<u>0.01970</u>	1.44	—	—	0.143	<u>0.321</u>
10/01/2008	--	389.36	—	—	0.0030500	<u>3.20</u>	<u>0.05720</u>	<u>2.40</u>	—	—	0.02380	<u>0.913</u>
05/12/2009	--	389.26	—	—	<u>0.0560</u>	<u>5.95</u>	<u>0.624</u>	<u>17.2</u>	—	—	0.833	<u>5.70</u>
10/26/2009	--	388.70	—	—	<u>0.09030</u>	<u>3.41</u>	<u>0.935</u>	<u>51.5</u>	—	—	<u>2.25</u>	<u>13.6</u>
06/15/2010	--	388.90	—	—	<u>0.04280</u>	<u>2.86</u>	<u>0.449</u>	<u>12.8</u>	—	—	0.377	<u>4.20</u>
10/14/2010	--	388.28	—	—	<u>0.113</u>	<u>7.56</u>	<u>2.48</u>	<u>137</u>	—	—	<u>9.24</u>	<u>25.6</u>
05/24/2011	--	388.85	—	—	<u>0.205</u>	<u>7.72</u>	<u>1.31</u>	<u>62.4</u>	—	—	<u>2.53</u>	<u>20.9</u>
10/26/2011	--	388.56	—	—	<u>0.104</u>	<u>12.0</u>	<u>1.39</u>	<u>47.0</u>	—	—	<u>2.09</u>	<u>20.7</u>
05/22/2012	--	388.82	—	—	<u>0.131</u>	<u>5.22</u>	<u>0.751</u>	<u>41.3</u>	—	—	<u>1.99</u>	<u>12.9</u>
10/11/2012	--	389.05	—	—	<u>0.01020</u>	1.35	<u>0.271</u>	<u>23.2</u>	—	—	0.373	<u>3.83</u>
05/21/2013	--	389.13	—	—	<u>1.50</u>	<u>20.3</u>	<u>2.39</u>	<u>70.0</u>	—	—	<u>11.2</u>	<u>15.9</u>
09/25/2013	--	389.18	—	—	<u>0.102</u>	<u>7.15</u>	<u>1.93</u>	<u>47.9</u>	—	—	<u>4.01</u>	<u>23.9</u>
05/06/2014	--	389.10	—	—	<u>0.0370</u>	<u>4.70</u>	<u>0.42</u>	<u>12.0</u>	—	—	0.47	<u>3.80</u>
09/17/2014	--	388.75	—	—	<u>0.0470</u>	<u>2.70</u>	<u>1.20</u>	<u>26.0</u>	—	—	<u>1.50</u>	<u>14.0</u>
05/26/2015	--	389.50	—	—	<u>0.0570</u>	<u>4.60</u>	<u>1.60</u>	<u>79.0</u>	—	—	<u>2.00</u>	<u>13.0</u>
10/06/2015	--	389.77	—	—	<u>0.10</u>	<u>2.20</u>	<u>1.50</u>	<u>57.0</u>	—	—	<u>2.10</u>	<u>16.0</u>
05/11/2016	--	389.07	—	—	0.00093000	<u>1.60</u>	<u>0.0340</u>	1.10	—	—	0.0240	<u>0.34</u>
10/05/2016	--	389.44	—	—	<u>0.0540</u>	<u>2.50</u>	<u>0.92</u>	<u>21.0</u>	—	—	0.61	<u>7.90</u>
05/08/2017	--	389.37	—	—	<u>0.0210</u>	<u>4.40</u>	<u>0.63</u>	<u>19.0</u>	—	—	0.32	<u>6.60</u>
09/05/2017	--	389.25	—	—	<u>0.0400</u>	<u>2.00</u>	<u>1.00</u>	<u>30.0</u>	—	—	0.75	<u>12.0</u>
06/14/2018	--	389.44	—	—	<u>0.0270</u>	<u>2.80</u>	<u>1.10</u>	U (25)	—	—	0.67	<u>11.6</u>
10/30/2018	--	389.14	—	—	<u>0.0360</u>	<u>5.70</u>	<u>1.20</u>	<u>39.0</u>	—	—	0.37	<u>12.0</u>
05/10/2019	--	388.84	—	—	<u>0.0290</u>	0.66	<u>0.38</u>	<u>10.0</u>	—	—	0.20	<u>4.02</u>
10/22/2019	--	389.42	—	—	<u>0.0280</u>	3.7 H	<u>0.75</u>	<u>17.0</u>	—	—	0.15	<u>5.50</u>
08/18/2020	--	389.75	—	—	<u>0.02440</u>	<u>2.84</u>	<u>0.637</u>	<u>12.6</u>	—	—	0.194	<u>6.86</u>
10/06/2020	--	389.35	—	—	<u>0.04460</u>	<u>3.64</u>	<u>0.473</u>	<u>10.7</u>	—	—	0.187	<u>4.59</u>
06/24/2021	--	389.80	—	—	<u>0.02920</u>	<u>2.03</u>	<u>0.598</u>	<u>16.0</u>	—	—	0.278	<u>6.45</u>
10/13/2021	--	--	—	—	0.0186 J	<u>2.16</u>	<u>0.248</u>	<u>7.35</u>	—	—	0.08560	<u>1.80</u>
05/16/2022	--	390.69	<u>0.322</u>	<u>0.134</u>	<u>0.01320</u>	1.49	<u>0.187</u>	<u>2.38</u>	<u>0.0035400</u>	42.0	0.131	<u>1.71</u>
09/26/2022	--	389.68	<u>0.473</u>	<u>0.166</u>	<u>0.01680</u>	1.30	<u>0.354</u>	<u>4.78</u>	<u>0.01480</u>	45.4	0.33	<u>2.77</u>
10/26/2022	--	389.26	—	—	<u>0.009900</u>	1.18	<u>0.383</u>	<u>6.65</u>	<u>0.01580</u>	51.7	0.22	<u>3.25</u>
04/27/2023	--	389.17	<u>0.137</u>	0.05110	<u>0.0130</u>	<u>1.72</u>	<u>0.219</u>	<u>4.97</u>	<u>0.0091700</u>	42.1	0.232	<u>1.63</u>
07/26/2023	--	389.67	<u>1.63</u>	<u>0.446</u>	<u>0.0120</u>	<u>2.82</u>	<u>0.577</u>	<u>9.42</u>	<u>0.02080</u>	34.4	0.353	<u>5.94</u>
08/16/2023	--	389.57	<u>0.406</u>	<u>0.129</u>	0.003500	1.15	<u>0.157</u>	1.72	<u>0.0060500</u>	33.6	0.05320	<u>1.17</u>

Appendix D: Historical Analytical Data Table

	Well Screen Interval	Ground Water Elevation	124-TMB	135-TMB	Benzene	DRO	Ethylbenzene	GRO	Naphthalene	Sodium	Toluene	Xylenes
Unit	ft	ft	ppm	ppm	ppm	ppm	ppm	ppm	ppm	ppm	ppm	ppm
GW Human Health Cleanup			0.056	0.06	0.0046	1.5	0.015	2.2	0.0017		1.1	0.19
09/27/2023	--	389.45	0.01520	0.06010	0.0065700	0.747	0.199	2.88	0.0045900	35.1	0.199	1.82
10/19/2023	--	389.16	0.116	0.03620	0.0038200	0.25	0.08810	1.46	0.0025400	32.7	0.01670	0.532
05/20/2024	--	389.41	0.801	0.255	0.01460	2.14	0.395	10.1	0.02160	50.1	0.209	4.41
06/11/2024	--	389.42	1.88	0.571	0.01340	2.24	0.554	14.9	0.02480	48.9	0.179	5.61
07/29/2024	--	389.89	0.609	0.201	0.01040	2.14	0.237	10.7	0.01320	46.8	0.05930	2.02
09/04/2024	--	389.76	0.479	0.147	U(0.100)	2.38	0.359	7.76	0.01260	45.3	0.212	2.85
10/02/2024	--	389.56	0.111	0.03990	0.0049300	0.837	0.128	1.36	0.0056700	37.5	0.03280	0.65
MW-4												
05/30/1997	--	380.39	—	—	0.85	0.55	0.16	3.80	—	—	0.71	0.64
09/11/1997	--	380.80	—	—	8.41	1.71	1.15	64.0	—	—	14.5	5.57
03/12/1998	--	380.44	—	—	2.30	0.68	0.42	15.0	—	—	3.30	1.80
07/21/1998	--	381.01	—	—	3.71	0.70	0.485	21.0	—	—	3.69	2.09
10/12/1998	--	380.33	—	—	1.95	1.29	0.36	12.0	—	—	1.99	1.58
01/21/1999	--	380.35	—	—	0.94	0.70	0.127	4.30	—	—	0.483	0.579
07/28/1999	--	380.63	—	—	3.48	2.65	0.39	21.0	—	—	5.60	1.86
10/15/1999	--	380.41	—	—	3.30	3.84	0.422	26.0	—	—	5.40	1.962
03/10/2000	--	380.05	—	—	1.88	1.91	0.466	14.0	—	—	2.52	2.03
06/21/2000	--	380.84	—	—	1.44	0.66	0.201	10.0	—	—	1.78	0.923
09/21/2000	--	380.78	—	—	U (0.0005)	0.838	U (0.002)	U (0.09)	—	—	U (0.002)	U (0.002)
01/25/2001	--	380.42	—	—	0.533	1.71	0.397	7.27	—	—	0.602	1.464
04/19/2001	--	380.38	—	—	U (0.0005)	U(0.8)	0.0110	0.225	—	—	0.0150	0.0660
07/24/2001	--	380.77	—	—	0.00100	0.869	U (0.002)	U (0.09)	—	—	U (0.002)	U (0.002)
01/28/2002	--	380.66	—	—	0.271	0.708	0.631	9.58	—	—	0.802	2.646
04/30/2002	--	381.26	—	—	0.06440	U (0.495)	0.509	0.623	—	—	U (0.002)	0.128
09/30/2002	--	380.82	—	—	0.01570	U (0.5)	0.0052300	0.09430	—	—	U (0.002)	0.01140
05/12/2003	--	381.29	—	—	0.01380	U (0.3)	0.0059500	0.167	—	—	0.0026800	0.052520
10/09/2003	--	380.52	—	—	0.03110	2.95	0.0055500	0.266	—	—	U (0.0005)	0.06570
04/21/2004	--	380.25	—	—	0.0029500	U (0.5)	0.0050600	0.311	—	—	U (0.0005)	0.113
10/21/2004	--	379.42	—	—	0.01210	0.455	U (0.0005)	0.06460	—	—	U (0.0005)	0.0079100
05/19/2005	--	380.76	—	—	0.0029500	U (0.391)	U (0.0005)	0.0670	—	—	U (0.0005)	0.01670
05/15/2006	--	380.23	—	—	0.000635000	U (0.403)	U (0.0005)	0.0510	—	—	U (0.0005)	0.0091900
05/15/2007	--	379.57	—	—	U (0.0005)	0.782	U (0.0005)	U (0.05)	—	—	U (0.0005)	U (0.0015)
04/29/2008	--	380.48	—	—	0.0017500	3.78	0.00097000	1.75	—	—	0.0033800	1.20
05/12/2009	--	380.58	—	—	U (0.0005)	U (0.427)	U (0.0005)	U (0.05)	—	—	0.0012100	0.0018900
06/15/2010	--	380.53	—	—	U (0.0005)	U (0.410)	U (0.0005)	U (0.05)	—	—	U (0.0005)	U (0.00976)
05/24/2011	--	380.47	—	—	U (0.0005)	U (0.403)	U (0.0005)	U (0.05)	—	—	U (0.0005)	U (0.0015)
05/22/2012	--	380.42	—	—	U (0.0005)	U (0.417)	U (0.0005)	U (0.05)	—	—	U (0.0005)	U (0.0015)
05/06/2013	--	380.83	—	—	U (0.0005)	U (0.403)	U (0.0005)	U (0.05)	—	—	U (0.0005)	U (0.0015)
05/21/2013	--	380.73	—	—	U (0.0005)	U (0.41)	U (0.0005)	U (0.05)	—	—	U (0.0005)	U (0.0015)

Appendix D: Historical Analytical Data Table

		<i>Well Screen Interval</i>	<i>Ground Water Elevation</i>	<i>124-TMB</i>	<i>135-TMB</i>	<i>Benzene</i>	<i>DRO</i>	<i>Ethylbenzene</i>	<i>GRO</i>	<i>Naphthalene</i>	<i>Sodium</i>	<i>Toluene</i>	<i>Xylenes</i>
Unit	ft	ft	ppm	ppm	ppm	ppm	ppm	ppm	ppm	ppm	ppm	ppm	ppm
GW Human Health Cleanup			0.056	0.06	0.0046	1.5	0.015	2.2	0.0017			1.1	0.19
05/26/2015	--	381.10	—	—	U (0.001)	0.23	U (0.001)	U (0.05)	—	—	U (0.001)	U (0.001)	U (0.001)
05/11/2016	--	380.69	—	—	U (0.0020)	U (0.40)	U (0.001)	U (0.1)	—	—	U (0.001)	U (0.003)	U (0.003)
05/08/2017	--	381.01	—	—	U (0.002)	0.14	U (0.003)	U (1)	—	—	U (0.002)	U (0.002)	U (0.002)
06/14/2018	--	381.09	—	—	U (0.003)	U (0.25)	U (0.003)	U (0.000054)	—	—	U (0.002)	U (0.002)	U (0.002)
05/09/2019	--	385.47	—	—	U (0.003)	0.51	U (0.003)	U (0.25)	—	—	U (0.002)	U (0.003)	U (0.003)
10/06/2020	--	380.98	—	—	U (0.001)	0.574	U (0.001)	0.01440	—	—	U (0.001)	U (0.003)	U (0.003)
10/13/2021	--	--	—	—	U (0.001)	2.84	U (0.001)	U (0.100)	—	—	U (0.001)	0.000454 J	0.000454 J
09/26/2022	--	381.31	0.000362000	U(0.00100)	U(0.00100)	2.68	U(0.00100)	0.03320	U(0.000250)	13.1	U(0.00100)	0.000534000	0.000534000
10/19/2023	--	380.79	0.000509000	0.000118000	U(0.00100)	0.598	0.000176000	U(0.100)	U(0.000250)	13.0	U(0.00100)	0.0010700	0.0010700
10/02/2024	--	381.22	U(0.00100)	U(0.00100)	U(0.00100)	0.422	U(0.00100)	0.07570	U(0.000250)	13.2	U(0.00100)	U(0.00300)	U(0.00300)
MW-5													
10/12/1998	--	--	—	—	0.0190	0.11	U	0.0450	—	—	U	0.00200	0.00200
01/21/1999	--	--	—	—	0.0510	0.127	U	0.11	—	—	U	U	U
03/31/1999	--	--	—	—	0.0230	U (0.297)	U (0.001)	U (0.09)	—	—	U (0.001)	0.001300	0.001300
07/28/1999	--	--	—	—	0.00800	U (0.300)	U (0.002)	U (0.09)	—	—	U (0.002)	U (0.002)	U (0.002)
10/15/1999	--	--	—	—	0.0400	U (0.297)	U (0.002)	0.11	—	—	U (0.002)	U (0.002)	U (0.002)
03/10/2000	--	--	—	—	0.104	U (0.297)	U (0.002)	0.22	—	—	0.00300	0.00500	0.00500
06/21/2000	--	--	—	—	0.0250	U (0.297)	U (0.002)	U (0.09)	—	—	U (0.002)	U (0.002)	U (0.002)
09/21/2000	--	--	—	—	0.0250	U (0.303)	U (0.002)	U (0.09)	—	—	U (0.002)	U (0.002)	U (0.002)
01/25/2001	--	--	—	—	0.0660	U (0.300)	0.00200	0.19	—	—	0.00300	0.00700	0.00700
04/19/2001	--	--	—	—	U(0.0005)	U(0.816)	0.00300	U (0.09)	—	—	0.00200	0.00300	0.00300
07/24/2001	--	--	—	—	U(0.0005)	U (0.495)	U (0.002)	U (0.09)	—	—	U (0.002)	U (0.002)	U (0.002)
01/28/2002	--	--	—	—	0.002900	U (0.521)	U (0.002)	U (0.09)	—	—	U (0.002)	0.00200	0.00200
04/30/2002	--	--	—	—	U(0.0005)	U (0.500)	U (0.002)	U (0.09)	—	—	U (0.002)	U (0.002)	U (0.002)
09/30/2002	--	--	—	—	U (0.0005)	U (0.5)	U (0.002)	U (0.09)	—	—	U (0.002)	U (0.002)	U (0.002)
05/12/2003	--	--	—	—	U (0.0005)	U (0.3)	U (0.002)	U (0.09)	—	—	U (0.002)	U (0.002)	U (0.002)
10/09/2003	--	--	—	—	U (0.0005)	U (0.32)	U (0.0005)	U (0.08)	—	—	U (0.0005)	U (0.001)	U (0.001)
04/21/2004	--	--	—	—	U (0.0005)	U (0.5)	U (0.0005)	U (0.05)	—	—	U (0.0005)	U (0.0015)	U (0.0015)
10/21/2004	--	--	—	—	U (0.0002)	U (0.4)	U (0.0005)	U (0.05)	—	—	U (0.0005)	U (0.001)	U (0.001)
05/19/2005	--	--	—	—	U (0.0005)	U (0.391)	U (0.0005)	U (0.05)	—	—	U (0.0005)	U (0.0015)	U (0.0015)
05/15/2006	--	--	—	—	U (0.0005)	U (0.391)	U (0.0005)	U (0.05)	—	—	U (0.0005)	U (0.0015)	U (0.0015)
05/15/2007	--	--	—	—	U (0.0005)	0.522	U (0.0005)	U (0.05)	—	—	U (0.0005)	0.0015400	0.0015400
04/29/2008	--	--	—	—	U (0.0005)	U (0.435)	U (0.0005)	U (0.05)	—	—	U (0.0005)	U (0.0015)	U (0.0015)
05/12/2009	--	--	—	—	U (0.0005)	U (0.450)	U (0.0005)	U (0.05)	—	—	U (0.0005)	U (0.0015)	U (0.0015)
MW-6													
06/21/2000	--	376.32	—	—	0.001200	U (0.3)	U (0.002)	U (0.09)	—	—	U (0.002)	U (0.002)	U (0.002)
09/21/2000	--	376.28	—	—	U (0.0005)	U (0.297)	U (0.002)	U (0.09)	—	—	U (0.002)	U (0.002)	U (0.002)
01/25/2001	--	376.03	—	—	0.00051000	U (0.3)	U (0.002)	U (0.09)	—	—	0.002600	0.00300	0.00300

Appendix D: Historical Analytical Data Table

	<i>Well Screen Interval</i>	<i>Ground Water Elevation</i>	<i>124-TMB</i>	<i>135-TMB</i>	<i>Benzene</i>	<i>DRO</i>	<i>Ethylbenzene</i>	<i>GRO</i>	<i>Naphthalene</i>	<i>Sodium</i>	<i>Toluene</i>	<i>Xylenes</i>
Unit	ft	ft	ppm	ppm	ppm	ppm	ppm	ppm	ppm	ppm	ppm	ppm
GW Human Health Cleanup			0.056	0.06	0.0046	1.5	0.015	2.2	0.0017		1.1	0.19
04/19/2001	--	375.98	—	—	U (0.0005)	U(0.808)	U (0.002)	U (0.09)	—	—	U (0.002)	0.00300
07/24/2001	--	376.29	—	—	U (0.0005)	U (0.495)	U (0.002)	U (0.09)	—	—	U (0.002)	U (0.002)
01/28/2002	--	376.24	—	—	U (0.0005)	U (0.500)	U (0.002)	U (0.09)	—	—	U (0.002)	U (0.002)
04/30/2002	--	376.58	—	—	0.000565000	U (0.500)	0.0020300	U (0.09)	—	—	0.0041100	0.010810
09/30/2002	--	376.21	—	—	U (0.0005)	U (0.495)	U (0.002)	U (0.09)	—	—	U (0.002)	U (0.002)
05/12/2003	--	375.94	—	—	U (0.0005)	U (0.3)	U (0.002)	U (0.09)	—	—	U (0.002)	U (0.002)
10/09/2003	--	376.11	—	—	U (0.0005)	U (0.32)	U (0.0005)	U (0.08)	—	—	U (0.0005)	U (0.001)
04/21/2004	--	375.80	—	—	U (0.0005)	U (0.5)	U (0.0005)	U (0.05)	—	—	U (0.0005)	U (0.0015)
10/21/2004	--	375.02	—	—	U (0.0002)	U (0.4)	U (0.0005)	U (0.05)	—	—	U (0.0005)	U (0.001)
05/19/2005	--	376.05	—	—	U (0.0005)	U (0.391)	U (0.0005)	U (0.05)	—	—	U (0.0005)	U (0.0015)
05/15/2006	--	375.77	—	—	U (0.0005)	U (0.397)	U (0.0005)	U (0.05)	—	—	U (0.0005)	U (0.0015)
05/15/2007	--	375.25	—	—	U (0.0005)	U (0.417)	U (0.0005)	U (0.05)	—	—	U (0.0005)	U (0.0015)
04/29/2008	--	376.04	—	—	U (0.0005)	U (0.481)	U (0.0005)	U (0.05)	—	—	U (0.0005)	U (0.0015)
05/12/2009	--	376.33	—	—	U (0.0005)	U (0.400)	U (0.0005)	U (0.05)	—	—	U (0.0005)	U (0.0015)
06/15/2010	--	--	—	—	U (0.0005)	U (0.431)	U (0.0005)	U (0.05)	—	—	U (0.0005)	U (0.00976)
05/24/2011	--	376.07	—	—	U (0.0005)	U (0.385)	U (0.0005)	U (0.05)	—	—	U (0.0005)	U (0.0015)
10/26/2011	--	375.93	—	—	U (0.0005)	U (0.403)	U (0.0005)	U (0.05)	—	—	U (0.0005)	U (0.0015)
05/22/2012	--	376.07	—	—	U (0.0005)	U (0.417)	U (0.0005)	U (0.05)	—	—	U (0.0005)	U (0.0015)
10/11/2012	--	376.25	—	—	U (0.0005)	U (0.403)	U (0.001)	U (0.05)	—	—	U (0.001)	U (0.003)
05/21/2013	--	376.29	—	—	U (0.0005)	U (0.417)	U (0.0005)	U (0.05)	—	—	U (0.0005)	U (0.0015)
09/25/2013	--	376.44	—	—	U (0.0005)	U (0.385)	U (0.0005)	U (0.05)	—	—	U (0.0005)	U (0.0015)
05/06/2014	--	376.40	—	—	U (0.0005)	U (0.42)	U (0.0005)	U (0.05)	—	—	U (0.0005)	U (0.0015)
09/17/2014	--	377.27	—	—	U (0.0005)	U (0.39)	U (0.0005)	U (0.05)	—	—	U (0.0005)	U (0.0005)
05/26/2015	--	377.01	—	—	U (0.001)	U (0.21)	U (0.001)	U (0.05)	—	—	U (0.001)	U (0.001)
10/06/2015	--	376.80	—	—	U (0.001)	0.84	U (0.001)	U (0.01)	—	—	U (0.001)	U (0.003)
05/11/2016	--	376.22	—	—	U (0.0020)	U (0.0020)	U (0.0020)	U (0.0020)	—	—	U (0.0020)	U (0.0020)
10/05/2016	--	376.51	—	—	U (0.0020)	U (0.12)	U (0.0030)	U (0.05)	—	—	U (0.0020)	U (0.0020)
05/08/2017	--	376.51	—	—	U (0.002)	U (0.11)	U (0.003)	U (1)	—	—	U (0.002)	U (0.002)
09/05/2017	--	376.45	—	—	U (0.004)	U (0.290)	U (0.001)	U (0.150)	—	—	U (0.001)	U (0.003)
06/14/2018	--	376.58	—	—	U (0.003)	U (0.12)	U (0.003)	U (0.25)	—	—	U (0.002)	U (0.002)
10/30/2018	--	376.34	—	—	U (0.003)	U (0.12)	U (0.003)	U (0.25)	—	—	U (0.002)	0.008400
05/09/2019	--	376.11	—	—	U (0.003)	U (0.12)	U (0.003)	U (0.25)	—	—	U (0.002)	U (0.003)
10/22/2019	--	376.53	—	—	U (0.003)	U (0.12)	U (0.003)	U (0.25)	—	—	U (0.002)	U (0.003)
08/18/2020	--	376.86	—	—	U (0.200)	J (0.210)	U (0.500)	U (0.0500)	—	—	U (0.500)	U (1.500)
10/06/2020	--	376.50	—	—	U (0.001)	U (0.800)	U (0.001)	U (0.0100)	—	—	U (0.001)	U (0.003)
06/24/2021	--	376.77	—	—	U (0.001)	U (0.800)	U (0.001)	J 0.0384	—	—	U (0.001)	U (0.003)
10/13/2021	--	--	—	—	U (0.001)	0.376 J	U (0.001)	U (0.1)	—	—	U (0.001)	0.000221000
05/16/2022	--	377.55	U(0.00100)	0.000565000	U(0.00100)	U(0.840)	0.000372000	0.0850	U(0.000250)	8.98	U(0.00100)	U(0.00300)
09/26/2022	--	376.78	U(0.00100)	U(0.00100)	U(0.00100)	U(0.832)	U(0.00100)	0.04650	U(0.000250)	10.1	U(0.00100)	U(0.00300)

Appendix D: Historical Analytical Data Table

		<i>Well Screen Interval</i>	<i>Ground Water Elevation</i>										
				<i>124-TMB</i>	<i>135-TMB</i>	<i>Benzene</i>	<i>DRO</i>	<i>Ethylbenzene</i>	<i>GRO</i>	<i>Naphthalene</i>	<i>Sodium</i>	<i>Toluene</i>	<i>Xylenes</i>
Unit	ft	ft	ppm	ppm	ppm	ppm	ppm	ppm	ppm	ppm	ppm	ppm	ppm
GW Human Health Cleanup			0.056	0.06	0.0046	1.5	0.015	2.2	0.0017			1.1	0.19
06/07/2023	--	376.95	U(0.00100)	U(0.00100)	U(0.00100)	U(0.800)	U(0.00100)	U(0.100)	U(0.000250)	7.78	U(0.00100)	U(0.00300)	
10/19/2023	--	376.38	U(0.00100)	U(0.00100)	U(0.00100)	U(0.888)	U(0.00100)	U(0.100)	U(0.000250)	10.0	U(0.00100)	U(0.00300)	
06/11/2024	--	376.62	U(0.00100)	U(0.00100)	U(0.00100)	U(0.800)	U(0.00100)	U(0.100)	U(0.000250)	7.46	U(0.00100)	U(0.00300)	
10/02/2024	--	376.73	U(0.00100)	U(0.00100)	U(0.00100)	0.337	U(0.00100)	0.03430	U(0.000250)	15.1	U(0.00100)	U(0.00300)	
MW-7													
10/09/2003	--	--	--	--	0.02370	U (0.32)	0.0140	2.36	--	--	0.0018500	0.08770	
04/21/2004	--	--	--	--	U (0.0005)	U (0.5)	U (0.0005)	U (0.05)	--	--	U (0.0005)	U (0.0015)	
10/21/2004	--	--	--	--	0.0032500	0.508	0.000934000	0.298	--	--	U (0.0005)	0.0049800	
05/19/2005	--	--	--	--	0.000909000	U (0.391)	0.000527000	0.275	--	--	U (0.0005)	U (0.0015)	
05/15/2006	--	--	--	--	U (0.0005)	0.412	U (0.0005)	0.109	--	--	U (0.0005)	U (0.0015)	
04/29/2008	--	--	--	--	U (0.0005)	U (0.413)	U (0.0005)	U (0.05)	--	--	U (0.0005)	U (0.0015)	
05/12/2009	--	--	--	--	U (0.0005)	U (0.442)	0.00063000	1.16	--	--	U (0.0005)	0.0023100	
MW-8													
03/16/2004	--	--	--	--	U (0.0005)	U (0.37)	U (0.0005)	U (0.05)	--	--	U (0.0005)	U (0.001)	
04/21/2004	--	--	--	--	U (0.0005)	U (0.5)	U (0.0005)	U (0.05)	--	--	U (0.0005)	U (0.0015)	
10/21/2004	--	--	--	--	0.000298000	U (0.4)	U (0.0005)	U (0.05)	--	--	U (0.0005)	U (0.001)	
05/19/2005	--	--	--	--	U (0.0005)	U (0.417)	U (0.0005)	U (0.05)	--	--	U (0.0005)	U (0.0015)	
05/15/2006	--	--	--	--	U (0.0005)	U (0.41)	U (0.0005)	U (0.05)	--	--	U (0.0005)	U (0.0015)	
05/15/2007	--	--	--	--	U (0.0005)	U (0.394)	U (0.0005)	U (0.05)	--	--	U (0.0005)	U (0.0015)	
04/29/2008	--	--	--	--	U (0.0005)	U (0.417)	U (0.0005)	U (0.05)	--	--	U (0.0005)	U (0.0015)	
05/12/2009	--	--	--	--	U (0.0005)	U (0.413)	0.00067000	U (0.05)	--	--	0.00062000	0.0019900	
MW-9													
03/16/2004	--	--	--	--	U (0.0005)	U (0.37)	U (0.0005)	U (0.05)	--	--	U (0.0005)	U (0.001)	
04/21/2004	--	--	--	--	U (0.0005)	U (0.5)	U (0.0005)	U (0.05)	--	--	U (0.0005)	U (0.0015)	
10/21/2004	--	--	--	--	U (0.0002)	U (0.4)	U (0.0005)	U (0.05)	--	--	U (0.0005)	U (0.001)	
05/19/2005	--	--	--	--	U (0.0005)	U (0.391)	U (0.0005)	U (0.05)	--	--	U (0.0005)	U (0.0015)	
05/15/2006	--	--	--	--	U (0.0005)	U (0.391)	U (0.0005)	U (0.05)	--	--	U (0.0005)	U (0.0015)	
05/15/2007	--	--	--	--	U (0.0005)	U (0.41)	U (0.0005)	U (0.05)	--	--	U (0.0005)	U (0.0015)	
04/29/2008	--	--	--	--	U (0.0005)	U (0.417)	U (0.0005)	U (0.05)	--	--	U (0.0005)	U (0.0015)	
05/12/2009	--	--	--	--	U (0.0005)	U (0.400)	U (0.0005)	U (0.05)	--	--	U (0.0005)	0.0018200	
MW-10													
09/17/2004	--	--	--	--	0.01030	U (0.385)	U (0.0005)	U (0.05)	--	--	U (0.0005)	U (0.0015)	
10/21/2004	--	373.28	--	--	U (0.0002)	2.19	U (0.0005)	U (0.05)	--	--	U (0.0005)	U (0.001)	
05/19/2005	--	374.19	--	--	U (0.0005)	U (0.391)	U (0.0005)	U (0.05)	--	--	U (0.0005)	U (0.0015)	
09/26/2005	--	374.14	--	--	U (0.0005)	U (0.397)	U (0.0005)	U (0.05)	--	--	U (0.0005)	U (0.0015)	
05/15/2006	--	373.96	--	--	U (0.0005)	U (0.391)	U (0.0005)	U (0.05)	--	--	U (0.0005)	U (0.0015)	
11/07/2006	--	373.99	--	--	U (0.0005)	U (0.442)	U (0.0005)	U (0.05)	--	--	U (0.0005)	U (0.0015)	
05/15/2007	--	373.58	--	--	U (0.0005)	U (0.41)	U (0.0005)	U (0.05)	--	--	U (0.0005)	U (0.0015)	

Appendix D: Historical Analytical Data Table

	<i>Well Screen Interval</i>	<i>Ground Water Elevation</i>	<i>124-TMB</i>	<i>135-TMB</i>	<i>Benzene</i>	<i>DRO</i>	<i>Ethylbenzene</i>	<i>GRO</i>	<i>Naphthalene</i>	<i>Sodium</i>	<i>Toluene</i>	<i>Xylenes</i>
Unit	ft	ft	ppm	ppm	ppm	ppm	ppm	ppm	ppm	ppm	ppm	ppm
GW Human Health Cleanup			0.056	0.06	0.0046	1.5	0.015	2.2	0.0017		1.1	0.19
10/16/2007	--	373.58	—	—	U (0.0005)	U (0.427)	U (0.0005)	U (0.05)	—	—	0.000745000	0.0084300
04/29/2008	--	374.06	—	—	U (0.0005)	U (0.424)	U (0.0005)	U (0.05)	—	—	U (0.0005)	U (0.0015)
10/01/2008	--	374.39	—	—	U (0.0005)	U (0.49)	U (0.0005)	U (0.05)	—	—	U (0.0005)	U (0.0015)
05/12/2009	--	374.31	—	—	U (0.0005)	U (0.403)	U (0.0005)	U (0.05)	—	—	U (0.0005)	U (0.0015)
10/26/2009	--	374.04	—	—	U (0.0005)	U (0.417)	U (0.001)	U (0.05)	—	—	U (0.001)	U (0.003)
06/15/2010	--	374.22	—	—	U (0.0005)	U (0.417)	U (0.0005)	U (0.05)	—	—	U (0.0005)	U (0.00976)
10/14/2010	--	374.09	—	—	U (0.0005)	U (0.397)	U (0.001)	U (0.05)	—	—	U (0.001)	U (0.003)
05/24/2011	--	374.19	—	—	U (0.0005)	U (0.410)	U (0.0005)	U (0.05)	—	—	U (0.0005)	U (0.0015)
10/26/2011	--	374.06	—	—	U (0.0005)	U (0.410)	U (0.0005)	U (0.05)	—	—	U (0.0005)	U (0.0015)
05/22/2012	--	374.14	—	—	U (0.0005)	U (0.410)	U (0.0005)	U (0.05)	—	—	U (0.0005)	U (0.0015)
10/11/2012	--	374.30	—	—	U (0.0005)	U (0.413)	U (0.001)	U (0.05)	—	—	U (0.001)	U (0.003)
05/21/2013	--	374.36	—	—	U (0.0005)	U (0.410)	U (0.0005)	U (0.05)	—	—	U (0.0005)	U (0.0015)
09/25/2013	--	374.48	—	—	U (0.0005)	U (0.403)	U (0.0005)	U (0.05)	—	—	U (0.0005)	U (0.0015)
05/06/2014	--	374.46	—	—	U (0.0005)	U (0.41)	U (0.0005)	U (0.05)	—	—	U (0.0005)	0.002700
09/17/2014	--	375.48	—	—	U (0.0005)	U (0.41)	U (0.0005)	U (0.05)	—	—	U (0.0005)	U (0.0015)
05/26/2015	--	375.22	—	—	U (0.001)	U (0.22)	U (0.001)	U (0.05)	—	—	U (0.001)	U (0.001)
10/06/2015	--	374.86	—	—	U (0.001)	0.41	U (0.001)	U (0.1)	—	—	U (0.001)	U (0.003)
05/11/2016	--	374.34	—	—	U (0.0020)	U (0.42)	U (0.001)	U (0.1)	—	—	U (0.001)	U (0.003)
10/05/2016	--	374.69	—	—	U (0.0020)	2.60	U (0.003)	U (0.05)	—	—	U (0.002)	U (0.002)
05/08/2017	--	374.59	—	—	U (0.002)	U (0.11)	U (0.003)	U (1)	—	—	U (0.002)	0.005600
09/05/2017	--	374.55	—	—	U (.0004)	U (0.280)	U (0.001)	U (0.150)	—	—	U (0.001)	U (0.003)
06/14/2018	--	374.64	—	—	U (0.003)	U (0.12)	U (0.003)	U (0.25)	—	—	U (0.002)	U (0.002)
10/30/2018	--	374.46	—	—	U (0.003)	U (0.12)	U (0.003)	U (0.25)	—	—	U (0.002)	U (0.003)
05/09/2019	--	374.28	—	—	U (0.003)	U (0.12)	U (0.003)	U (0.25)	—	—	U (0.002)	U (0.003)
10/22/2019	--	374.64	—	—	U (0.003)	U (0.12)	U (0.003)	U (0.25)	—	—	U (0.002)	U (0.003)
08/18/2020	--	374.92	—	—	U (0.0002)	J (0.283)	U (0.0005)	U (0.050)	—	—	U (0.0005)	U (0.0015)
10/06/2020	--	374.59	—	—	U (0.001)	U (0.800)	U (0.001)	U (0.0100)	—	—	U (0.001)	U (0.003)
06/24/2021	--	374.81	—	—	U (0.001)	U (0.800)	U (0.001)	U (0.0100)	—	—	U (0.001)	U (0.003)
10/13/2021	--	--	—	—	0.0024700	0.403 J	U (0.001)	U (0.1)	—	—	U (0.001)	U (0.003)
05/16/2022	--	387.58	U(0.00100)	U(0.00100)	0.0097400	U(0.800)	U(0.00100)	0.0330	U(0.000250)	6.53	0.0038700	0.000289000
09/26/2022	--	374.87	U(0.00100)	U(0.00100)	U(0.00100)	U(0.872)	U(0.00100)	0.02940	U(0.000250)	7.56	U(0.00100)	U(0.00300)
04/27/2023	--	374.56	U(0.00100)	U(0.00100)	U(0.00100)	0.203	U(0.00100)	0.04930	U(0.000250)	9.10	U(0.00100)	U(0.00300)
10/19/2023	--	374.51	U(0.00100)	U(0.00100)	U(0.00100)	U(0.944)	U(0.00100)	U(0.100)	U(0.000250)	22.4	U(0.00100)	U(0.00300)
06/11/2024	--	374.70	U(0.00100)	U(0.00100)	U(0.00100)	U(0.800)	U(0.00100)	U(0.100)	U(0.000250)	9.30	U(0.00100)	U(0.00300)
10/02/2024	--	374.81	U(0.00100)	U(0.00100)	U(0.00100)	0.392	U(0.00100)	0.04020	U(0.000250)	12.8	U(0.00100)	U(0.00300)