

# BGES, INC.

ENVIRONMENTAL CONSULTANTS

**LIMITED HAZARDOUS BUILDING MATERIALS INVENTORY  
HOMER EDUCATION AND RECREATION CENTER  
HOMER, ALASKA**

**ADEC FILE NUMBER 2314.38.043  
ADEC HAZARD ID 27933**

**SEPTEMBER 2025**

**Submitted to:**

**Flannery Ballard  
Division of Spill Prevention & Response, Contaminated Sites Program  
Alaska Department of Environmental Conservation  
410 Willoughby Avenue  
Juneau, Alaska 99801**

**Submitted by:**

**BGES, INC.  
1042 East 6<sup>th</sup> Avenue  
Anchorage, Alaska 99501  
(907) 644-2900  
*WWW.BGESINC.COM***

TABLE OF CONTENTS

1.0 INTRODUCTION ..... 1  
1.1 2020 Hazardous Building Material Inventory ..... 2  
1.2 2022-2023 Hazardous Building Material Inventories ..... 2  
1.3 2025 Hazardous Building Material Inventory by BGES ..... 3  
2.0 SITE DESCRIPTION AND SAMPLING TECHNIQUES ..... 4  
3.0 LBP SAMPLING AND ASSESSMENT ..... 4  
3.1 Description of Assessment ..... 4  
3.2 XRF Analytical Techniques ..... 4  
4.0 RESULTS ..... 5  
5.0 APPLICABLE REGULATIONS AND GUIDELINES ..... 5  
5.1 Lead-Based Paint for Federally Owned or Assisted Housing (Sections 1012 & 1013) ..... 5  
5.2 U.S. EPA’s Renovation, Repair, & Painting (RRP) Rule (40 CFR 745 Subpart E) ..... 5  
5.3 US EPA NESHAP Regulations ..... 6  
5.4 OSHA Regulations CFR 1910 And 1926 ..... 7  
5.5 U.S. EPA’s Disposal of PCB Bulk Product Waste (40 CFR 761.62) ..... 8  
5.6 State of Alaska Landfill Disposal Requirements ..... 8  
6.0 CONCLUSIONS AND RECOMMENDATIONS ..... 9

**LIST OF TABLES (at end of report)**

TABLE 1                      LBP Locations

**LIST OF FIGURES (at end of report)**

FIGURE 1                      Site Map  
FIGURE 2                      HERC 1 – 1<sup>st</sup> Floor Hazardous Building Materials  
FIGURE 3                      HERC 1 – 2<sup>nd</sup> Floor Hazardous Building Materials  
FIGURE 4                      HERC 2 – 1<sup>st</sup> Floor Hazardous Building Materials  
FIGURE 5                      HERC 2 – 2<sup>nd</sup> Floor Hazardous Building Materials

**LIST OF APPENDICES**

APPENDIX A                      XRF Data  
APPENDIX B                      BGES' Personnel Certifications  
APPENDIX C                      Site Photographs

ACRONYMS

---

ACBM	-	Asbestos-Containing Building Materials
ACM	-	Asbestos-Containing Materials
ADEC	-	Alaska Department of Environmental Conservation
AHERA	-	Asbestos Hazard Emergency Response Act
BGES	-	Braunstein Geological and Environmental Services
CFR	-	Code of Federal Regulations
cm <sup>2</sup>	-	Square Centimeter
DBAC	-	ADEC Brownfield Assessment and Cleanup
EPA	-	Environmental Protection Agency
HBMI	-	Hazardous Building Materials Inventory
HUD	-	Department of Housing and Urban Development
LBP	-	Lead-Based Paint
µg/L	-	Micrograms Per Liter
mg	-	Milligram
mg/Kg	-	Milligram per Kilogram
NESHAP	-	National Emissions Standard for Hazardous Air Pollutants
OSHA	-	Occupational Safety and Health Administration
PCB	-	Polychlorinated Biphenyls
PEL	-	Permissible Exposure Limit
PLM	-	Polarized Light Microscopy (PLM)
RACM	-	Regulated Asbestos Containing Material
TCLP	-	Toxicity Characteristic Leaching Procedure
TSCA	-	Toxic Substances Control Act
TSI	-	Thermal System Insulation
XRF	-	X-Ray Fluorescence

## 1.0 INTRODUCTION

BGES, Inc. (BGES) was contracted by the Alaska Department of Environmental Conservation (ADEC) to conduct a limited Hazardous Building Materials Inventory (HBMI) of the Homer Education and Recreation Center (HERC) in Homer, Alaska (hereafter referred to as the “subject property”). The subject property is listed in the ADEC Contaminated Sites database, under File Number 2314.38.043 and Hazard ID Number 27933. The legal description of the subject property is listed by the Kenai Peninsula Borough (KPB) Property Information database as “T 6S R 13W SEC 19 SEWARD MERIDIAN HM 2000022 HOMER SCHOOL SURVEY 1999 CITY ADDN TRACT 2” and is approximately 4.3 acres in size. The subject property is located at 450 Sterling Highway, to the northwest of the intersection of Sterling Highway and West Pioneer Avenue in the southern portion of Homer, Alaska (Figure 1).

According to the ADEC Brownfields Assessment and Cleanup (DBAC) Application, the City of Homer purchased the HERC Buildings, HERC 1 and HERC 2, in July 2000 from the KPB, which had previously used them as a school. The buildings were constructed in the 1950s, before statehood when construction with hazardous building materials (HBMs) was commonplace. HERC 1 is a mixed office space and community gym, and HERC 2 is abandoned due to structural concerns.

HBMI assessments were conducted in 2020 and again in 2023 by two separate firms, and HBMs such as asbestos-containing building materials (ACBMs), lead-based paint (LBP), and polychlorinated biphenyls (PCBs) were identified. Consequently, the City of Homer applied for ADEC DBAC services to review previous HBMI assessments and provide a data gap analysis; assess previous environmental sampling efforts and evaluate the presence of lead in soils from LBP around both buildings; and to assist with cleanup planning by providing an Analysis of Brownfield Cleanup Alternatives (ABCA), including providing support with community engagement efforts.

According to the National Emissions Standard for Hazardous Air Pollutants (NESHAP), Asbestos-Containing Materials (ACMs) are defined as containing at least 1 percent asbestos; including but not limited to chrysotile, amosite, tremolite, actinolite, and crocidolite asbestos. According to the Environmental Protection Agency (EPA), LBP is defined as exceeding the regulatory limit of 1.0 milligram of lead per square centimeter; or 1.0 mg/cm<sup>2</sup>. According to the Toxic Substances Control Act (TSCA), PCB bulk product waste is defined as containing more than 50 milligrams per kilogram (mg/Kg) total PCBs.

## 1.1 2020 Hazardous Building Material Inventory

An HBMI was conducted by Environmental Management, Inc. in 2020 for both buildings (*Hazardous Building Materials Survey – HERC Buildings 1 and 2*; March 2020).

A total of 191 bulk layers were collected from 99 sample locations from both buildings for asbestos analysis. Twenty-three of the samples were found to contain between 2.4 percent and 80 percent asbestos. The HBMI identified ACBMs such as floor tile mastic, pipe insulation, and joint compound in both buildings.

A total of 44 x-ray fluorescence (XRF) readings were collected from both buildings to assess the presence of LBP; however, while the 2020 HBMI report concluded that the windows of each building contained LBP, the HBMI did not collect the appropriate number of readings for the windows or for other building fixtures, did not present the locations of the XRF readings, and did not present the numerical results of those readings, as required by U.S. Department of Housing and Urban Development (HUD) regulations per Sections 1012 & 1013 of Title X, 24 Code of Federal Regulations (CFR) Part 35. The HBMI visually assessed building materials for PCBs and concluded that light ballasts may contain PCBs, but samples for analysis were not collected.

## 1.2 2022-2023 Hazardous Building Material Inventories

In 2022 and 2023, HBMI were again conducted for both buildings.

### *Homer HERC 2 – 2022*

In October 2022, in January 2023, and again in May 2023, HTRW, LLC (HTRW) conducted an HBMI of the HERC 2 building (*HERC 2 Hazardous Materials Assessment*, July 25, 2003). The inspection included sampling for ACBM and PCBs and screening for LBP.

A total of 78 bulk layers were collected from 64 sample locations within the building for asbestos analysis. A total of thirty-nine samples were found to contain chrysotile or amosite, and detections ranged from 1.1 percent to 85 percent. The HBMI identified ACBMs such as floor tile and mastic, ceiling mastic, pipe insulation, joint compound, sealant and putty, and other miscellaneous building materials.

A total of 118 samples were collected for PCB analyses, plus 14 duplicate samples. Fifty-seven of the samples, including four duplicate samples, contained detectable amounts of PCBs; thirty-six of those samples contained PCBs in exceedance of 1.0 mg/Kg. Building materials that contained PCBs included wall, door, and window paints; window glazing compounds; ceiling and floor tiles; mastic; cove base; and fiberglass insulation. As mentioned above, these building components are not acceptable at any landfills

in Alaska.

HTRW collected 112 screenings using a hand-held XRF (SciApps X-550) from locations throughout the interior and around the exterior of the building. Fourteen of the readings exceeded the EPA regulatory limit of 1.0 milligram per square centimeter (mg/cm<sup>2</sup>). However, the inspector did not conduct an inspection to the extent that the HUD regulations require per Sections 1012 & 1013 of Title X, 24 CFR Part 35, and did not collect the appropriate number of samples for each testing combination and each wall within each room equivalent.

### ***Homer HERC 1 - 2023***

In May of 2023, HTRW conducted an HBMI of the HERC 1 building (*HERC 1 Hazardous Materials Assessment*, July 25, 2003). The inspection included sampling for ACBM and PCBs and screening for LBP.

HTRW collected 15 bulk samples from 13 sample locations within HERC 1 for asbestos analysis. Three of those samples had detections of chrysotile asbestos at or above 1 percent and were found in the putty used in the exterior seams of the metal siding, window glazing compound, and a cloth within the duct system in the kitchen.

HTRW did not perform an LBP-survey of HERC 1.

HTRW collected 34 samples, including five duplicate samples, for PCB analysis. Nine of the samples contained detectable concentrations of PCBs and seven of those samples contained PCBs in exceedance of 1.0 mg/Kg. Building materials that contained PCBs included wall and window paints and varnish; ceiling tiles; and mastic. As mentioned above, these building components (with detectable concentrations of PCBs) are not acceptable at any landfills in Alaska.

### **1.3 2025 Hazardous Building Material Inventory by BGES**

The purpose of this assessment was to further characterize the potential presence of hazardous building materials, such as LBP in selected, representative areas/locations within the HERC 1 building present on the subject property. This report presents the results of our findings. The presence of LBP was evaluated using an XRF field-screening instrument. This report presents the results of our findings. XRF data are included in Appendix A.

The limited HBMI was performed on May 19 and 20, 2025 by Lisa Vitale, Environmental Scientist II of BGES. Ms. Vitale is an Asbestos Hazard Emergency Response Act (AHERA)-Certified Building

Inspector (Certificate #ON-188748-19662-012825) and a U.S. EPA-Certified Lead Inspector (Certificate #LBP-I-I275520-1). Copies of BGES' certificates are included in Appendix B.

A total of 440 XRF readings were taken from all identified different testing combinations in the buildings on the subject property, from interior and exterior portions of the structures. Testing combinations are comprised of rooms (or room equivalents), building components, and substrates. Forty-five of the XRF readings taken from components of windows around the building, a shelf system and metal pole in the janitor's closet, and the green exterior paint on the walls and door of the gym exceeded the EPA regulatory limit of 1.0 mg/cm<sup>2</sup>; and window assessment was discontinued after at least twenty windows returned positive results for LBP.

Applicable regulations regarding the abatement and disposal of ACBM and materials with LBP and PCBs are described in greater detail in Section 5. XRF data are included in Appendix B.

## **2.0 SITE DESCRIPTION AND SAMPLING TECHNIQUES**

The subject property contains two buildings of approximately 24,000 square feet combined; these structures were constructed in the 1950s. Photographs of the subject property and structures are included in Appendix C. Interior and exterior portions of the structures, including the roofs, were inspected for the presence of LBP.

Lead sampling was performed by utilizing a Heuresis Pb200i XRF Lead Analyzer to test for the presence of lead in selected painted surfaces. This was accomplished in general accordance with established U.S. HUD & EPA guidelines.

## **3.0 LBP SAMPLING AND ASSESSMENT**

### **3.1 Description of Assessment**

The LBP assessments were conducted on May 19 and 20, 2025. The assessment included a visual inspection of the structures and collection of XRF data from painted surfaces.

### **3.2 XRF Analytical Techniques**

Painted surfaces were analyzed using a Heuresis Pb200i XRF Lead Analyzer. For a complete description of the XRF testing method, please refer to the 1997 HUD Inspection Protocol.

## 4.0 RESULTS

A total of 440 XRF readings were taken from all identified different testing combinations, from interior and exterior portions of the structures. Testing combinations are comprised of rooms (or room equivalents), building components, and substrates. Forty-five of the readings taken from components of windows around the building, a shelf system and metal pole in the janitor's closet, and the green exterior paint on the walls and door of the gym exceeded the EPA regulatory limit of 1.0 mg/cm<sup>2</sup>; and assessment of windows was discontinued after at least twenty windows returned positive results for LBP.

XRF sample locations are depicted on Figures 2 through 5 and photographs of the sampled locations where LBP was detected are provided in Appendix C. Applicable regulations regarding the abatement and disposal of LBP are described in greater detail in Section 5 below. XRF data are summarized in Appendix A.

## 5.0 APPLICABLE REGULATIONS AND GUIDELINES

### 5.1 Lead-Based Paint for Federally Owned or Assisted Housing (Sections 1012 & 1013)

On September 15, 1999, HUD published final regulations to implement Sections 1012 & 1013 of Title X, which set forth specific policies on LBP hazard reduction in federally assisted and federally owned housing (24 CFR Part 35 — Requirement for Notification, Evaluation and Reduction of Lead-Based Paint Hazard in Housing Receiving Federal Assistance). This rule is a comprehensive amendment of previous federal housing LBP regulations and consolidates HUD LBP requirements into one part of the CFR. HUD guidelines are applicable for a dwelling that contains LBP at 1.0 mg/cm<sup>2</sup> or more. In most cases, HUD guidelines also require disclosure of the presence of LBP in building materials to any future tenants or owners of the property.

### 5.2 U.S. EPA's Renovation, Repair, & Painting (RRP) Rule (40 CFR 745 Subpart E)

Between 2008 and 2013, the U.S. EPA promulgated the RRP guidelines pertaining to renovation, repair, and painting projects that disturb lead-based paint in homes, child care facilities and pre-schools built before 1978, and it requires contractors to have their firm certified by EPA (or an EPA-authorized state), use certified renovators who are trained by EPA-approved training providers, and follow lead-safe work practices.

### 5.3 US EPA NESHAP Regulations

According to the NESHAP standards, before general demolition or renovation activities within buildings containing asbestos can occur, identified friable and some categories of non-friable ACBMs must be properly encapsulated or abated, as prescribed by NESHAP regulations. NESHAP categorizes ACM analyzed by the polarized light microscopy (PLM) method into two main types, friable and non-friable ACM. Friable ACM is a material that when dry, can be crumbled, pulverized, or reduced to powder by hand pressure. Non-friable ACM is further delineated by two different Categories, Category I and Category II non-friable ACM. Category I non-friable ACM is defined as asbestos-containing packing, gaskets, resilient floor covering, and asphalt roofing product. Category II non-friable ACM is any material, excluding Category I non-friable ACM that when dry cannot be crumbled, pulverized, or reduced to powder by hand pressure. NESHAP considers friable ACM, Category I non-friable ACM, and Category II non-friable ACM that is exposed to certain conditions (discussed below), to be Regulated Asbestos Containing Material (RACM). Notification to the U.S. EPA or the state is required before a building containing RACM is demolished or renovated. A material is considered RACM if it fits these criteria:

- Friable ACM.
- Category I non-friable ACM that has been or will be exposed to forces during demolition or removal that may disturb the material and cause it to become friable. This includes, but is not limited to, grinding, cutting, sanding, and abrading.
- Category II non-friable ACM that has been or will be exposed to forces during demolition or renovation that may disturb the material, causing it to become crumbled, pulverized, or reduced to a powdered form.

According to NESHAP regulations, RACM need not be removed before demolition or renovation if it meets the following criteria:

- It is Category I non-friable ACM that is in good condition.
- It is enclosed in concrete or other similarly hard material and is adequately wet when it is exposed during demolition or renovation.
- The RACM was discovered after demolition or renovation began and it cannot be safely removed.
- It is Category II non-friable ACM and there is a low probability that the material will become disturbed during demolition or renovation.

## **5.4 OSHA Regulations CFR 1910 And 1926**

The Occupational Safety and Health Administration (OSHA)'s permissible exposure limit (PEL) is 0.1 fiber per cubic centimeter (f/cc) of air as an 8-hour time-weighted average (TWA). The Excursion Limit is 1.0 f/cc averaged over a 30-minute period.

With the exception of agricultural activities, OSHA's general industry standard regulates all activities related to asbestos that are not covered by the construction and shipyard employment standards. This standard requires employers to provide awareness training to employees who perform maintenance or housekeeping duties where ACM or presumed ACM is located. This includes a mandatory participation-training program for all employees who are exposed to airborne asbestos at or above the PEL and or Excursion Limit. The program should be instituted and carried out before the employee's initial exposure to the area and a refresher course must be offered annually.

Under OSHA's construction standard, OSHA classifies construction activity according to descending degree of risk, with Class I work presenting the greatest potential risk and class IV the lowest.

- Class I work involves the removal of Thermal System Insulation (TSI) and surfacing ACM or PACM.
- Class II work involves removal of any other ACM that is not TSI or surfacing ACM.
- Class III work includes repair and maintenance activities where employees are likely to disturb ACM.
- Class IV work is defined as maintenance and custodial activities during which employees contact ACM or PACM, including waste and debris cleanup.

Employers must institute a training program for all workers who install asbestos-containing products and all workers who perform Class I, II, III, or IV work. Medical surveillance is required for all workers who engage in class I, II, or III work for a combined total of 30 days or more per year. Medical surveillance is also required for those who are exposed above the PEL or the excursion limit of 1.0 f/cc. Employers and building owners must communicate the hazard to employees and the contractors when ACM or PACM is present in their facilities or if their employees will work with ACM.

OSHA requires a competent person to be designated by the employer. The competent person must have qualifications and the authority for ensuring worker health and safety. This includes identifying existing asbestos hazards in the workplace and selecting the appropriate control strategy to reduce asbestos exposure with the authority to take prompt corrective action. Class I and Class II construction work requires the USEPA's Model Accreditation Plan (40 CFR 763) training or its equivalent for the project

designer or supervisor. Class III and Class IV construction work requires completion of a 24-hour Operation and Maintenance (O&M) course developed by the U.S. EPA (40 CFR 763.93) or its equivalent. The duties of the competent person include regular inspections of the job site, equipment, and materials as part of the required safety and health program.

### **5.5 U.S. EPA's Disposal of PCB Bulk Product Waste (40 CFR 761.62)**

TSCA regulations apply when PCBs are determined to be present at concentrations exceeding 50 mg/Kg in solid wastes. TSCA-regulated PCB bulk product waste may be disposed of in a facility permitted, licensed, or registered by a State as a municipal or non-municipal non-hazardous waste landfill provided the waste is one of the following: plastics (such as plastic insulation from wire or cable; radio, television and computer casings; vehicle parts; or furniture laminates); preformed or molded rubber parts and components; applied dried paints, varnishes, waxes or other similar coatings or sealants; caulking; Galbestos; non-liquid building demolition debris; or non-liquid PCB bulk product waste from the shredding of automobiles or household appliances from which PCB small capacitors have been removed (shredder fluff), or is a PCB bulk product waste, sampled in accordance with the protocols set out in 40 CFR 761 subpart R, that leaches PCBs at <10 micrograms per liter ( $\mu\text{g/L}$ ) of water measured using a procedure used to simulate leachate generation.

Additionally, PCB waste disposal records and reports must be maintained in accordance with 40 CFR 761 subpart K.

### **5.6 State of Alaska Landfill Disposal Requirements**

The ADEC has issued guidance regarding disposal requirements for building materials from non-residential facilities with LBP. For more information regarding material disposal options, please refer to the ADEC publication titled "Non-Residential Lead-Based Paint Guidance Document" dated April 2024, which discusses disposal limitations based on total lead and toxicity characteristic leaching procedure (TCLP)-lead concentrations.

In Alaska, materials with detections of PCBs are generally not permitted in rural landfills. The maximum allowable PCB concentration for disposal of building materials in some landfills (such as the Anchorage Regional Landfill) is 1.0 mg/Kg. Some landfills may have further restrictions regarding disposal of PCBs. For more information, please contact the ADEC Solid Waste Division or the landfill proposed for disposal of the material.

## 6.0 CONCLUSIONS AND RECOMMENDATIONS

A total of 440 XRF readings were taken from selected painted surfaces, divided into various testing combinations. Forty-five of the readings taken from components of windows around the building, a shelf system and metal pole in the janitor's closet, and the green exterior paint on the walls and door of the gym exceeded the EPA regulatory limit of 1.0 mg/cm<sup>2</sup>; and window assessment was discontinued after at least twenty windows returned positive results for LBP.

Figures 2 through 5 depict the locations where hazardous building materials have been identified on the subject property during this inspection, as well as all previous hazardous building materials surveys performed to date.

The conclusions and recommendations presented in this report are based on prevailing site conditions during the sample collection period. The inspector did not demolish walls, chases, or any other building spaces while performing this assessment. Consequently, asbestos-containing materials (ACMs), PCBs, and LBP may be present in other areas/building materials that were not inspected during this survey.

Other potentially hazardous materials that are found in some building components include PCBs in fluorescent light ballasts (unless the ballast is labeled as 'non-PCB-containing'); mercury in some thermostats, fluorescent light tubes and lamps; and phosphorescent chemicals in emergency exit signs. In addition, electric switches and water heaters frequently contain mercury. Electronic devices such as computer monitors, televisions, cell phones, printers, computer bodies (processors), telephones, and microwave ovens may contain lead, cadmium, chromium, and copper. If these materials are not identified to be free of the respective potential hazardous substances; then they should be tested, or assumed to contain the applicable hazardous materials, and be handled and disposed of in accordance with applicable laws and regulations.

This report was prepared for our client, Flannery Ballard, Environmental Program Specialist for the Alaska Department of Environmental Conservation. The scope of work was defined in the October 9, 2024 work plan that was approved on October 24, 2024. It is not intended for third parties to rely on the information provided in this report, except at their own risk. This report presents facts, observations, and inferences based on conditions observed during the period of our project activities, and only those conditions that were evaluated as part of our scope of work. Changes to site conditions may have occurred since we completed our initial project activities. These changes may be from the actions of man or nature. Changes

in regulations may also impact the interpretation of site conditions. BGES will not disclose our findings to any parties other than our client as listed above, except as directed by our client, or as required by law.

The lead inspection was conducted by Lisa Vitale, Environmental Scientist II of BGES. Ms. Vitale is an AHERA-Certified Building Inspector (Certificate #ON-188748-19662-012825) and an EPA-Certified Lead Inspector (Certificate #LBP-I-1275520-1).

This HBMI report was prepared by Emily Adler, Environmental Scientist I of BGES, and reviewed by Brian Braunstein, Senior Environmental Scientist II of BGES. Mr. Braunstein is an AHERA-Certified Building Inspector (Certificate #ON-188748-19654-011125) and an EPA-Certified Lead Risk Assessor (Certificate #LBP-R-13453-4). He has over 20 years of environmental consulting experience and has managed numerous HBMI's at sites throughout Alaska.

Conducted by:



Lisa Vitale  
Environmental Scientist II

Prepared by:



Emily Adler  
Environmental Scientist I

Reviewed by:



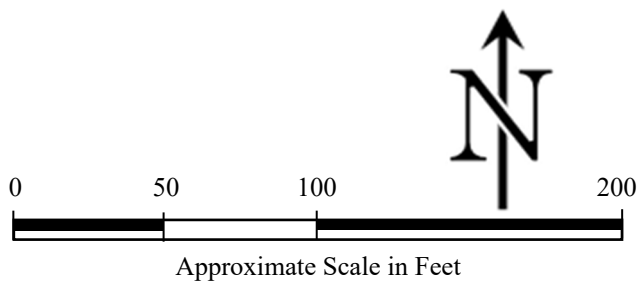
Brian Braunstein  
Senior Environmental Scientist II

**TABLE 1  
LBP LOCATIONS**

Positive XRF Sample ID #	Testing Location	Building Component	Approximate Area (estimated total for unit/common area)
Numerous	HERC 1	All window components, excluding the glass	All windows
295 - 298	Janitor Closet in Men's Bathroom	Shelf	~ 50 square feet
299	Janitor Closet in Men's Bathroom	Shelf Support	~ 10 square feet
411, 412, 415, 417, 433	Exterior Wall	Exterior Wall	~12,000 square feet
423	Exterior Roof	Exterior Trim	~1,000 square feet
435	Exterior Gym Door	Exterior Door Casing	~50 square feet



Source: Google Earth Pro ©

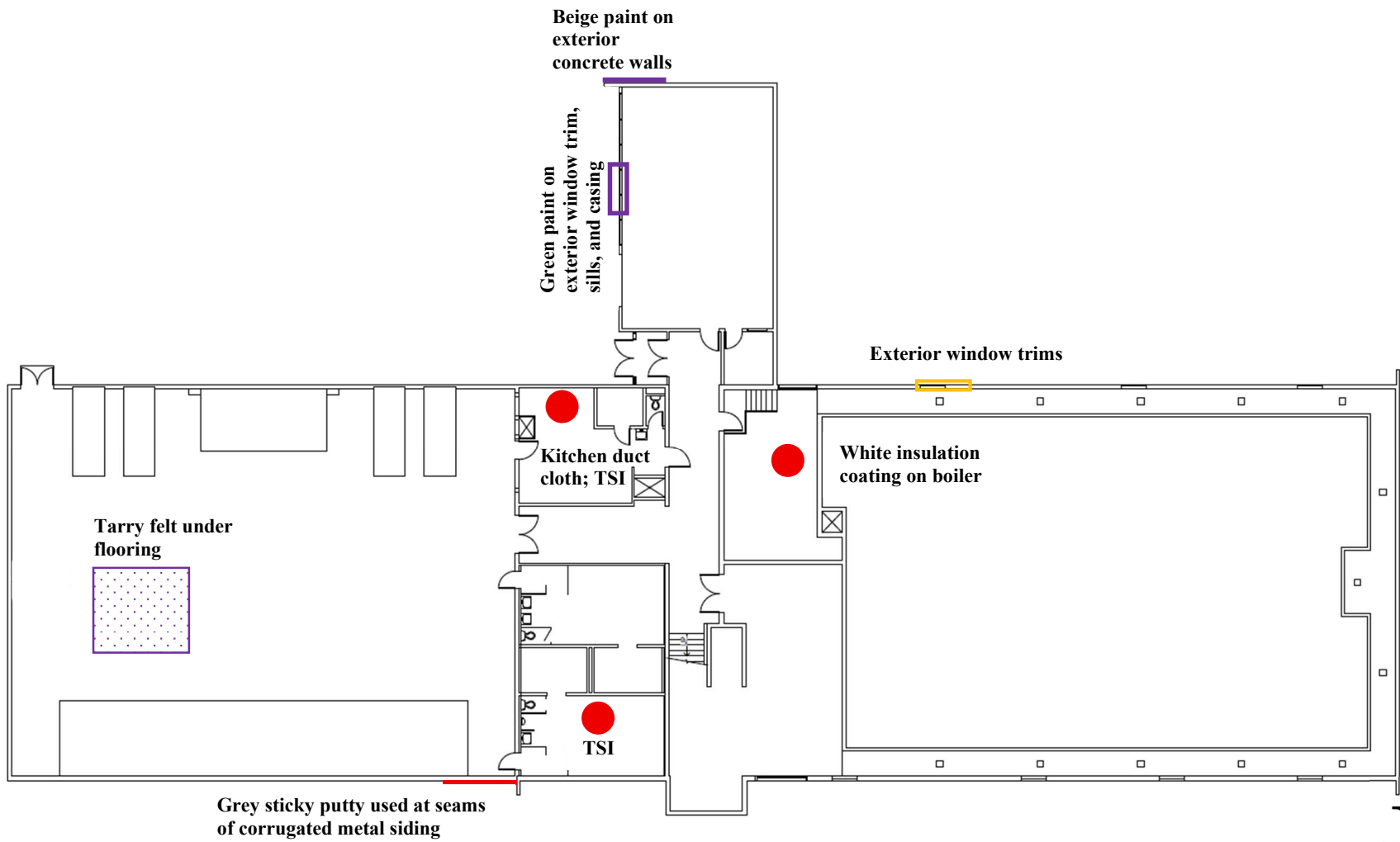


Homer HERC Buildings  
Homer, Alaska  
**Site Map**

  
BGES, INC.

September 2025

Figure 1



Floorplan from HERC 1 Hazardous Materials Assessment; scale not provided

**Legend**

**Building Component Contains**

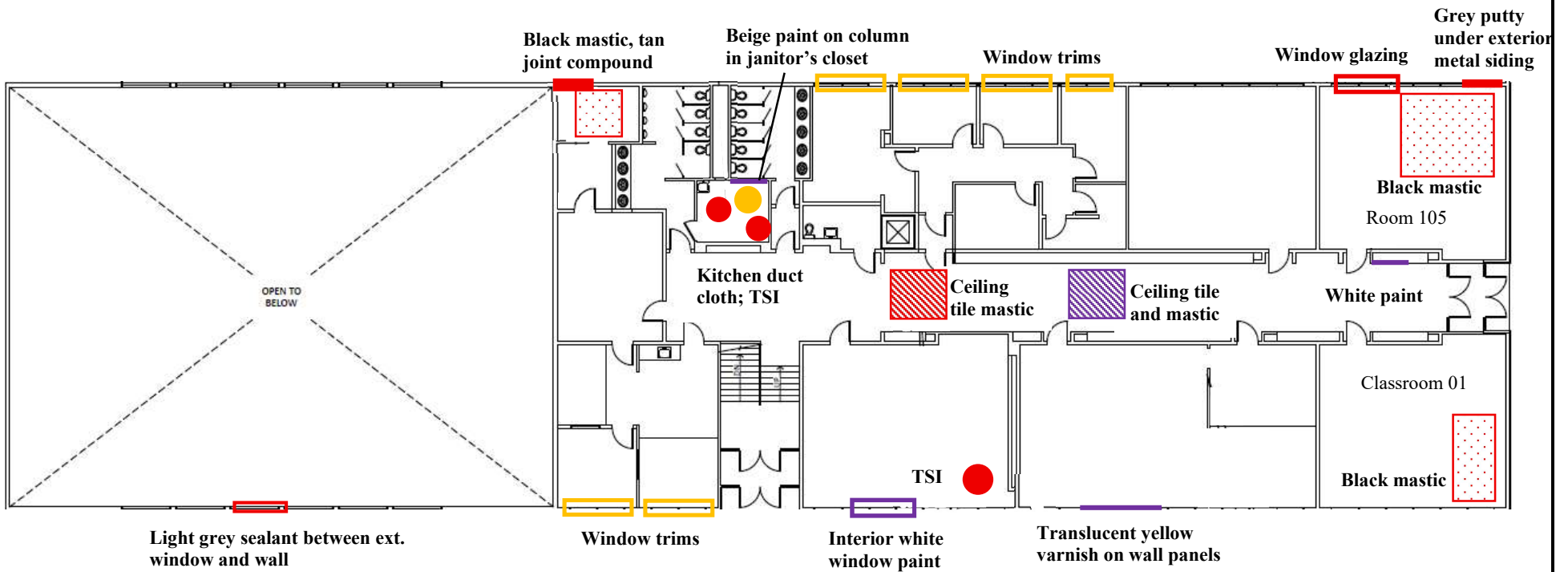
	Asbestos	LBP	PCBs
Window component			
Wall component			
Door component			
Floor component			
Ceiling component			
TSI & other Miscellaneous items			

Homer HERC Buildings  
 Homer, Alaska  
**HERC 1 – 1<sup>st</sup> Floor**  
**Hazardous Building Materials**



September 2025

Figure 2



**Legend**

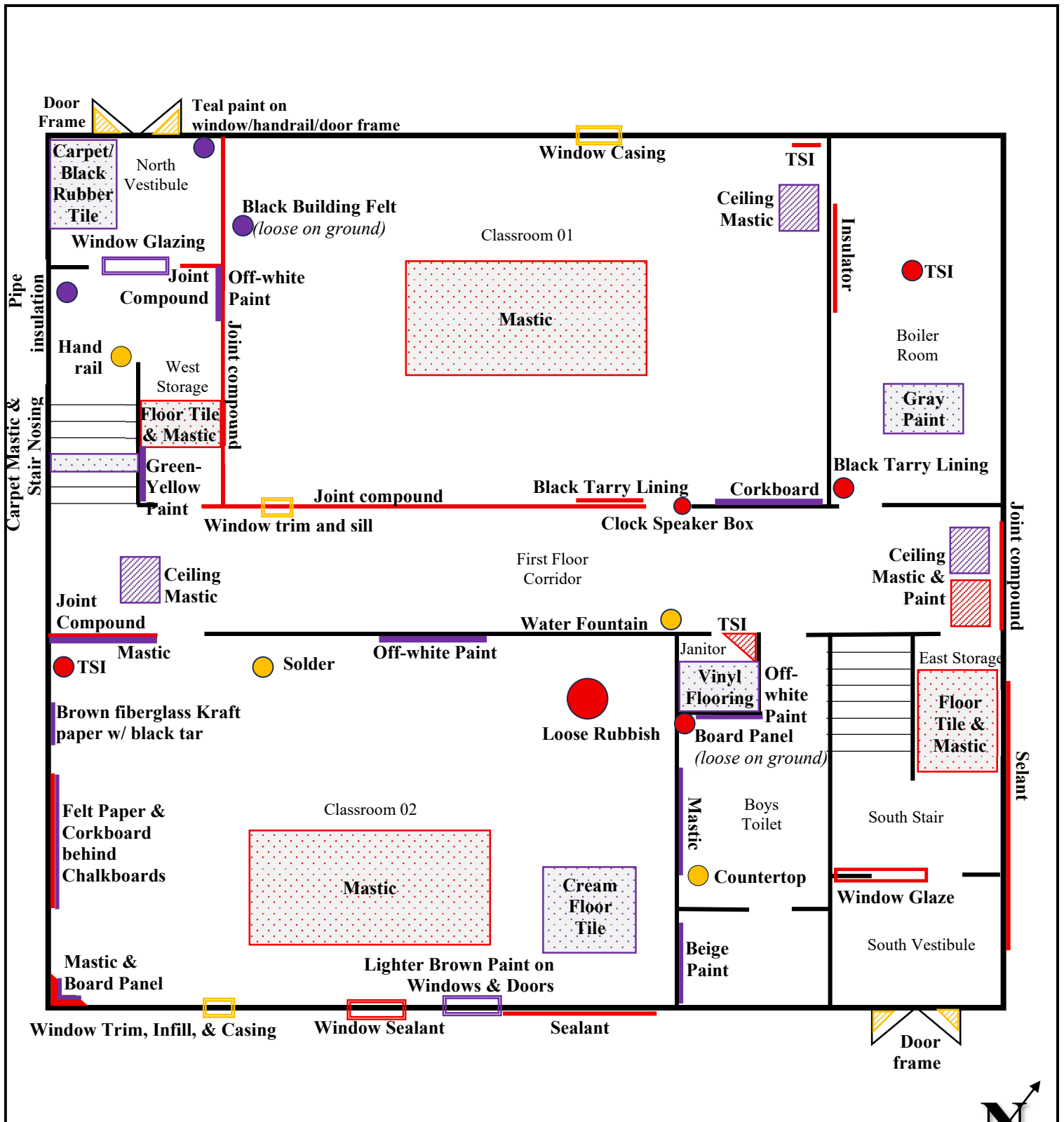
**Building Component Contains**

	Asbestos	LBP	PCBs
Window component			
Wall component			
Door component			
Floor component			
Ceiling component			
TSI & other Miscellaneous items			

Floorplan from HERC 1 Hazardous Materials Assessment; scale not provided



Homer HERC Buildings  
 Homer, Alaska  
**HERC 1 – 2<sup>nd</sup> Floor**  
**Hazardous Building Materials**

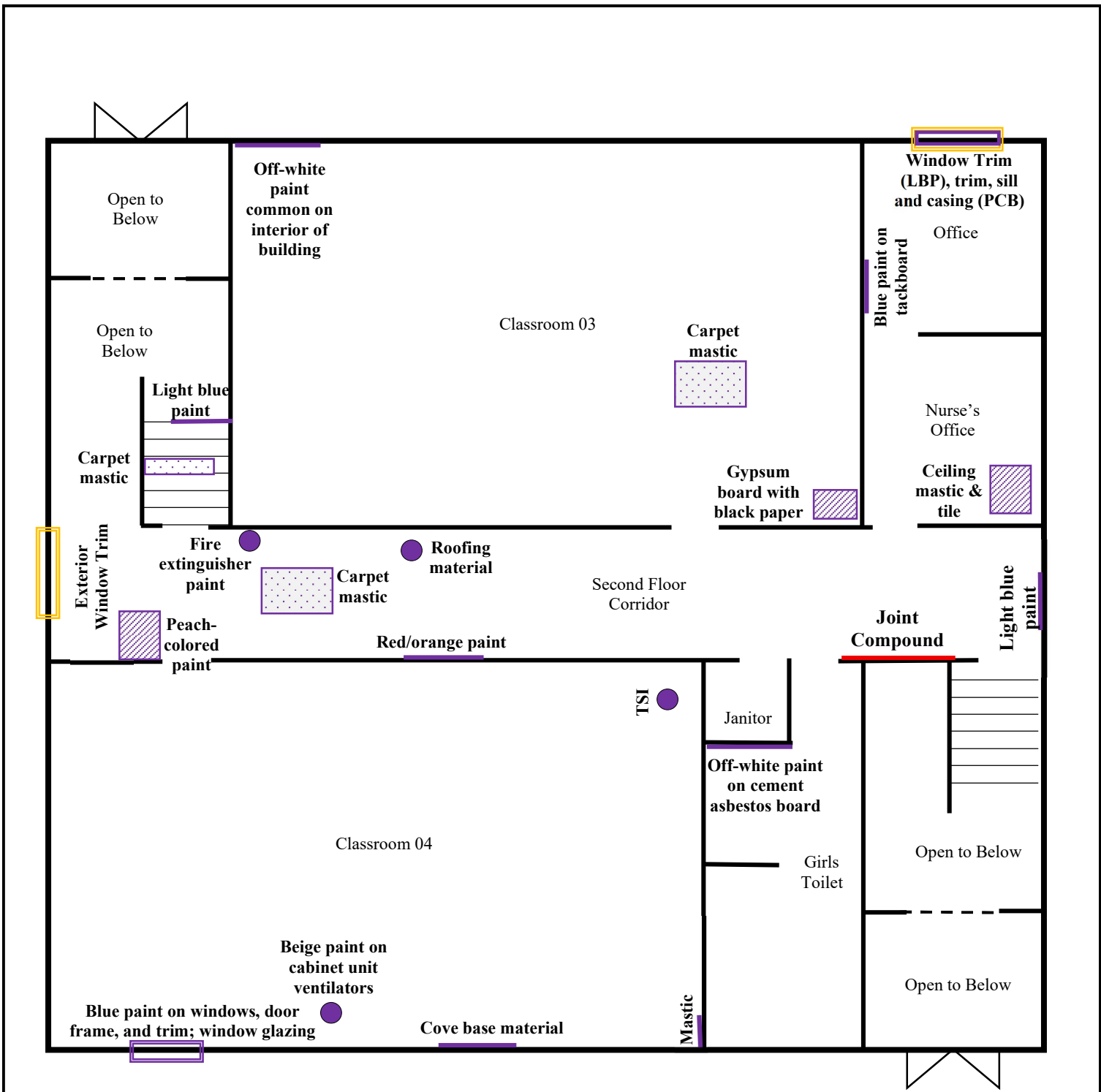


Floorplan from HERC 1 Hazardous Materials Assessment; scale not provided



Homer HERC Buildings  
 Homer, Alaska  
**HERC 2 – 1<sup>st</sup> Floor**  
**Hazardous Building Materials**

	Legend		
	Asbestos	LBP	PCBs
Window component			
Wall component			
Door component			
Floor component			
Ceiling component			
TSI & other Miscellaneous items			



**Legend**

**Building Component Contains**

	Asbestos	LBP	PCBs
Window component			
Wall component			
Door component			
Floor component			
Ceiling component			
TSI & other Miscellaneous items			

Floorplan from HERC 1 Hazardous Materials Assessment; scale not provided



Homer HERC Buildings  
Homer, Alaska  
**HERC 2 - 2<sup>nd</sup> Floor**  
**Hazardous Building Materials**

**APPENDIX A  
XRF DATA**

Reading	Job	Room Type	Room	Structure	Member	Substrate	Wall	Result (mg/cm <sup>2</sup> )	Pos/Neg	Date	Time
	Here1 LBP		Calibration					0.1	Negative	5/20/2025	16:06:14
	Here1 LBP		Calibration					0	Negative	5/20/2025	16:06:29
	Here1 LBP		Calibration					0.1	Negative	5/20/2025	16:06:47
	<b>Here1 LBP</b>		<b>Calibration</b>					<b>1.1</b>	<b>Positive</b>	<b>5/20/2025</b>	<b>16:07:02</b>
	<b>Here1 LBP</b>		<b>Calibration</b>					<b>1.1</b>	<b>Positive</b>	<b>5/20/2025</b>	<b>16:07:28</b>
	<b>Here1 LBP</b>		<b>Calibration</b>					<b>1.2</b>	<b>Positive</b>	<b>5/20/2025</b>	<b>16:08:14</b>
1	Here1 LBP	Common	Front Stairwell	Railing		Metal	A	0	Negative	5/20/2025	16:09:46
2	Here1 LBP	Common	Front Stairwell	Railing		Metal	A	0	Negative	5/20/2025	16:10:09
3	Here1 LBP	Common	Front Stairwell	Room	Wall	Drywall	A	0.1	Negative	5/20/2025	16:10:46
4	Here1 LBP	Common	Front Stairwell	Room	Wall	Drywall	A	0.1	Negative	5/20/2025	16:11:10
5	Here1 LBP	Common	Front Stairwell	Room	Wall	Drywall	A	0.2	Negative	5/20/2025	16:11:24
6	Here1 LBP	Common	Front Stairwell	Room	Wall	Drywall	C	0.3	Negative	5/20/2025	17:16:09
7	Here1 LBP	Common	Front Stairwell	Room	Wall	Drywall	C	0.3	Negative	5/20/2025	17:16:27
8	Here1 LBP	Common	Hallway	Room	Wall	Drywall	C	0.5	Negative	5/20/2025	17:16:57
9	Here1 LBP	Common	Hallway	Room	Wall	Drywall	D	0.3	Negative	5/20/2025	17:17:20
10	Here1 LBP	Common	Hallway	Door	Inner Casing	Metal	C	0.1	Negative	5/20/2025	17:21:07
11	Here1 LBP	Common	Hallway	Door	---	Wood	C	0	Negative	5/20/2025	17:21:41
12	Here1 LBP	Common	Hallway	Room	Wall	Drywall	A	0.3	Negative	5/20/2025	17:23:20
13	Here1 LBP	Common	Hallway	Room	Wall	Drywall	D	0.3	Negative	5/20/2025	17:23:57
14	Here1 LBP	Common	Hallway	Room	Chair Rail	Wood	D	0	Negative	5/20/2025	17:24:26
15	Here1 LBP	Common	Hallway	Door	Jamb	Metal	C	0.1	Negative	5/20/2025	17:25:02
16	Here1 LBP	Common	Hallway	Door	Jamb	Metal	C	0.1	Negative	5/20/2025	17:25:14
17	Here1 LBP	Common	Hallway	Door	Inner Casing	Metal	C	0.1	Negative	5/20/2025	17:25:34
18	Here1 LBP	Common	Hallway	Door	---	Wood	A	0	Negative	5/20/2025	17:26:10
19	Here1 LBP	Common	Basement	Room	Wall	Drywall	D	0.1	Negative	5/20/2025	17:27:15
20	Here1 LBP	Common	Basement	Room	Wall	Drywall	A	0.1	Negative	5/20/2025	17:27:34
21	Here1 LBP	Common	Basement	Room	Wall	Drywall	B	0	Negative	5/20/2025	17:27:57
22	Here1 LBP	Common	Basement	Ledge		Wood	B	0	Negative	5/20/2025	17:29:15
23	Here1 LBP	Common	Basement	Ledge		Wood	B	0	Negative	5/20/2025	17:29:30
24	Here1 LBP	Common	Basement	HVAC		Metal	B	0.1	Negative	5/20/2025	17:30:13
25	Here1 LBP	Common	Basement	Room	Wall	Drywall	C	0.3	Negative	5/20/2025	17:30:53
26	Here1 LBP	Common	Basement	Room	Wall	Concrete	D	0.1	Negative	5/20/2025	17:31:27
27	Here1 LBP	Common	Basement	Pipe	Vertical	Metal	D	0.1	Negative	5/20/2025	17:32:04
28	Here1 LBP	Common	Basement	Bookcase	Shelf	Wood	A	0.1	Negative	5/20/2025	17:32:39
29	Here1 LBP	Common	Basement	Bookcase	Shelf	Wood	A	0	Negative	5/20/2025	17:32:54
30	Here1 LBP	Common	Basement	Room	Ceiling	Concrete	A	0.1	Negative	5/20/2025	17:33:35
31	Here1 LBP	Common	Basement	Room	Wall	Drywall	B	0.1	Negative	5/20/2025	17:34:00
32	Here1 LBP	Common	Basement	Room	Wall	Drywall	A	0.1	Negative	5/20/2025	17:34:33
33	Here1 LBP	Common	Basement	Room	Floor	Concrete	A	0.1	Negative	5/20/2025	17:35:10
34	Here1 LBP	Common	Basement	Room	Wall	Drywall	D	0.1	Negative	5/20/2025	17:35:44
35	Here1 LBP	Common	Basement	Room	Wall	Drywall	B	0	Negative	5/20/2025	17:36:07
36	Here1 LBP	Common	Basement	Door	---	Drywall	B	0	Negative	5/20/2025	17:36:31
37	Here1 LBP	Common	Basement	Door	---	Wood	D	0	Negative	5/20/2025	17:37:03
38	Here1 LBP	Common	Basement	Door	---	Wood	B	0	Negative	5/20/2025	17:37:22
39	Here1 LBP	Common	Basement	Door	Jamb	Wood	A	0	Negative	5/20/2025	17:37:50
40	Here1 LBP	Common	Basement	Room	Ceiling	Concrete	A	0.2	Negative	5/20/2025	17:38:20
41	Here1 LBP	Common	Basement	Room	Wall	Concrete	C	0.2	Negative	5/20/2025	17:38:45
42	Here1 LBP	Common	Basement	Room	Wall	Concrete	A	0.2	Negative	5/20/2025	17:39:06
43	Here1 LBP	Common	Basement	Room	Wall	Wood	D	0	Negative	5/20/2025	17:39:27
44	Here1 LBP	Common	Basement	Room	Wall	Wood	D	0	Negative	5/20/2025	17:39:48
45	Here1 LBP	Common	Basement	Door	Threshold	Wood	D	0	Negative	5/20/2025	17:40:56
46	Here1 LBP	Common	Basement	Room	Wall	Drywall	A	0.2	Negative	5/20/2025	17:41:46
47	Here1 LBP	Common	Basement	Room	Wall	Drywall	B	0.2	Negative	5/20/2025	17:42:05
48	Here1 LBP	Common	Basement	Room	Wall	Drywall	C	0.2	Negative	5/20/2025	17:42:22
49	<b>Here1 LBP</b>	<b>Common</b>	<b>Basement</b>	<b>Window</b>	<b>Casing</b>	<b>Drywall</b>	<b>D</b>	<b>2.5</b>	<b>Positive</b>	<b>5/20/2025</b>	<b>17:43:09</b>
50	Here1 LBP	Common	Basement	Window	Sill	Wood	D	1.7	Positive	5/20/2025	17:43:39
51	Here1 LBP	Common	Basement	Window	Casing	Wood	D	1.9	Positive	5/20/2025	17:43:59
52	Here1 LBP	Common	Basement	Window	Casing	Wood	D	1.8	Positive	5/20/2025	17:44:13
53	Here1 LBP	Common	Basement	Window	Jamb	Wood	D	4.4	Positive	5/20/2025	17:46:19
54	Here1 LBP	Common	Basement	Window	Sash	Wood	D	3	Positive	5/20/2025	17:47:38
55	Here1 LBP	Common	Basement	Window	Header	Metal	D	0	Negative	5/20/2025	17:48:36
56	Here1 LBP	Common	Basement	Window	Header	Metal	D	0.2	Negative	5/20/2025	17:48:51
57	Here1 LBP	Exterior	Shed (Exterior)	Room	Wall	Metal	A	0.1	Negative	5/20/2025	17:56:11
58	Here1 LBP	Exterior	Shed (Exterior)	Room	Wall	Metal	A	0	Negative	5/20/2025	17:56:28
59	Here1 LBP	Exterior	Shed (Exterior)	Room	Wall	Metal	B	0.1	Negative	5/20/2025	17:56:51
60	Here1 LBP	Exterior	Shed (Exterior)	Room	Wall	Metal	B	0.1	Negative	5/20/2025	17:57:23
61	Here1 LBP	Exterior	Shed (Exterior)	Room	Wall	Metal	C	0.1	Negative	5/20/2025	17:57:49
62	Here1 LBP	Exterior	Shed (Exterior)	Room	Wall	Metal	C	0	Negative	5/20/2025	17:58:02
63	Here1 LBP	Exterior	Shed (Exterior)	Room	Wall	Metal	C	0.1	Negative	5/20/2025	17:58:14
64	Here1 LBP	Exterior	Shed (Exterior)	Room	Wall	Metal	D	0.1	Negative	5/20/2025	17:58:39

Reading	Job	Room Type	Room	Structure	Member	Substrate	Wall	Result (mg/cm <sup>2</sup> )	Pos/Neg	Date	Time
65	Here1 LBP	Common	Hallway	Room	Wall	Concrete	B	0.1	Negative	5/20/2025	18:05:44
66	Here1 LBP	Common	Hallway	Room	Wall	Concrete	C	0.1	Negative	5/20/2025	18:06:10
67	Here1 LBP	Common	Hallway	Room	Wall	Drywall	A	0.3	Negative	5/20/2025	18:06:38
68	Here1 LBP	Common	Hallway	Room	Wall	Drywall	B	0.2	Negative	5/20/2025	18:06:58
69	Here1 LBP	Common	Hallway	Room	Chair Rail	Drywall	B	0	Negative	5/20/2025	18:07:25
70	Here1 LBP	Common	Hallway	Room	Chair Rail	Drywall	B	0	Negative	5/20/2025	18:07:39
71	Here1 LBP	Common	Hallway	Room	Chair Rail	Metal	D	0	Negative	5/20/2025	18:08:14
72	Here1 LBP	Common	Hallway	Room	Chair Rail	Wood	D	0	Negative	5/20/2025	18:08:42
73	Here1 LBP	Apartment	Bathroom	Door	Jamb	Metal	C	0	Negative	5/20/2025	18:09:55
74	Here1 LBP	Apartment	Bathroom	Door	Casing	Metal	C	0	Negative	5/20/2025	18:10:15
75	Here1 LBP	Apartment	Bathroom	Door	Casing	Metal	C	0	Negative	5/20/2025	18:10:28
76	Here1 LBP	Apartment	Bathroom	Door	---	Metal	C	0	Negative	5/20/2025	18:10:49
77	Here1 LBP	Apartment	Bathroom	Door	---	Metal	C	0.1	Negative	5/20/2025	18:11:05
78	Here1 LBP	Apartment	Bathroom	Door	Frame	Wood	C	0	Negative	5/20/2025	18:11:46
79	Here1 LBP	Apartment	Bathroom	Room	Wall	Wood	B	0	Negative	5/20/2025	18:12:20
80	Here1 LBP	Apartment	Bathroom	Room	Wall	Metal	A	0	Negative	5/20/2025	18:12:54
81	Here1 LBP	Apartment	Bathroom	Room	Wall	Metal	D	0.1	Negative	5/20/2025	18:13:20
82	Here1 LBP	Apartment	Bathroom	Room	Wall	Metal	B	0.3	Negative	5/20/2025	18:13:53
83	Here1 LBP	Apartment	Bathroom	Room	Wall	Metal	D	0	Negative	5/20/2025	18:14:14
84	Here1 LBP	Apartment	Bathroom	Room	Wall	Drywall	A	0.1	Negative	5/20/2025	18:14:38
85	Here1 LBP	Apartment	Bathroom	Room	Wall	Drywall	D	0.1	Negative	5/20/2025	18:15:00
86	Here1 LBP	Apartment	Bathroom	Room	Wall	Drywall	C	0.1	Negative	5/20/2025	18:15:20
87	Here1 LBP	Apartment	Bathroom	Room	Wall	Drywall	B	0	Negative	5/20/2025	18:15:41
88	Here1 LBP	Apartment	Bathroom	Room	Chair Rail	Wood	B	0	Negative	5/20/2025	18:16:32
89	Here1 LBP	Apartment	Bathroom	Room	Ceiling	Drywall	B	0.4	Negative	5/20/2025	18:17:18
90	Here1 LBP	Apartment	Bathroom	Radiator	Cover	Metal	D	0.2	Negative	5/20/2025	18:17:53
91	Here1 LBP	Common	Building 2 Laundry Room	Door	Casing	Metal	C	0	Negative	5/20/2025	18:20:52
92	Here1 LBP	Common	Building 2 Laundry Room	Door	---	Metal	C	0	Negative	5/20/2025	18:21:32
93	Here1 LBP	Common	Building 2 Laundry Room	Door	Jamb	Metal	C	0	Negative	5/20/2025	18:22:01
94	Here1 LBP	Common	Building 2 Laundry Room	Room	Wall	Wood	B	0	Negative	5/20/2025	18:23:02
95	Here1 LBP	Common	Building 2 Laundry Room	Room	Wall		C	0	Negative	5/20/2025	18:23:51
96	Here1 LBP	Common	Building 2 Laundry Room	Room	Crown Molding	Metal	B	0	Negative	5/20/2025	18:24:32
97	Here1 LBP	Common	Building 2 Laundry Room	Room	Crown Molding	Metal	B	0	Negative	5/20/2025	18:24:50
98	Here1 LBP	Common	Building 2 Laundry Room	Room	Wall	Drywall	B	0	Negative	5/20/2025	18:25:18
99	Here1 LBP	Common	Building 2 Laundry Room	Door	---	Metal	B	0	Negative	5/20/2025	18:26:02
100	Here1 LBP	Common	Building 2 Laundry Room	Door	Buck	Metal	B	0	Negative	5/20/2025	18:26:30
101	Here1 LBP	Common	Building 2 Laundry Room	Door	Casing	Metal	B	0	Negative	5/20/2025	18:26:50
102	Here1 LBP	Common	Building 2 Laundry Room	Door	Casing	Wood	B	0	Negative	5/20/2025	18:27:20
103	Here1 LBP	Common	Building 2 Laundry Room	Room	Floor	Wood	B	0.1	Negative	5/20/2025	18:28:01
104	Here1 LBP	Common	Building 2 Laundry Room	Room	Floor	Wood	B	0.1	Negative	5/20/2025	18:28:13
105	Here1 LBP	Common	Building 2 Laundry Room	Room	Floor	Wood	B	0.1	Negative	5/20/2025	18:28:43
106	Here1 LBP	Common	Building 2 Laundry Room	Room	Floor	Wood	B	0.1	Negative	5/20/2025	18:28:55
107	Here1 LBP	Apartment	Bathroom	Room	Wall	Drywall	D	0.1	Negative	5/20/2025	18:30:15
108	Here1 LBP	Apartment	Bathroom	Room	Wall	Drywall	A	0	Negative	5/20/2025	18:30:36
109	Here1 LBP	Apartment	Bathroom	Room	Wall	Metal	B	0	Negative	5/20/2025	18:31:04
110	Here1 LBP	Apartment	Bathroom	Room	Wall	Drywall	B	0.1	Negative	5/20/2025	18:31:32
111	Here1 LBP	Apartment	Bathroom	Room	Chair Rail	Wood	B	0	Negative	5/20/2025	18:32:09
112	Here1 LBP	Apartment	Bathroom	Room	Chair Rail	Metal	B	0	Negative	5/20/2025	18:32:28
113	Here1 LBP	Apartment	Bathroom	Room	Wall	Drywall	C	0	Negative	5/20/2025	18:32:57
114	Here1 LBP	Apartment	Kitchen	Room	Wall	Drywall	B	0	Negative	5/20/2025	18:34:26
115	Here1 LBP	Apartment	Kitchen	Door	---	Wood	A	0	Negative	5/20/2025	18:34:56
116	Here1 LBP	Apartment	Kitchen	Door	Casing	Wood	A	0.1	Negative	5/20/2025	18:35:27
117	Here1 LBP	Apartment	Kitchen	Door	Casing	Metal	A	0	Negative	5/20/2025	18:35:53
118	Here1 LBP	Apartment	Kitchen	Door	Jamb	Metal	A	0	Negative	5/20/2025	18:36:14
119	Here1 LBP	Apartment	Kitchen	Room	Wall	Drywall	A	0	Negative	5/20/2025	18:37:41
120	Here1 LBP	Apartment	Kitchen	Room	Wall	Drywall	B	0	Negative	5/20/2025	18:38:02
121	Here1 LBP	Apartment	Kitchen	Room	Wall	Drywall	C	0.1	Negative	5/20/2025	18:38:22
122	Here1 LBP	Apartment	Kitchen	Room	Wall	Drywall	B	0.1	Negative	5/20/2025	18:38:43
123	Here1 LBP	Apartment	Kitchen	Room	Wall	Drywall	D	0	Negative	5/20/2025	18:39:05
124	Here1 LBP	Apartment	Kitchen	Cabinets	Door	Metal	D	0	Negative	5/20/2025	18:39:49
125	Here1 LBP	Apartment	Kitchen	Cabinets	Shelf	Metal	D	0	Negative	5/20/2025	18:40:21
126	Here1 LBP	Apartment	Kitchen	Closet	Wall	Metal	D	0	Negative	5/20/2025	18:41:18
127	Here1 LBP	Apartment	Kitchen	Closet	Jamb	Metal	D	0	Negative	5/20/2025	18:41:47
128	Here1 LBP	Apartment	Kitchen	Closet	Casing	Metal	D	0	Negative	5/20/2025	18:42:05
129	Here1 LBP	Apartment	1/2 Bathroom	Door	---	Wood	B	0	Negative	5/20/2025	18:43:07
130	Here1 LBP	Apartment	1/2 Bathroom	Door	Jamb	Metal	B	0	Negative	5/20/2025	18:43:39
131	Here1 LBP	Apartment	1/2 Bathroom	Door	Casing	Metal	B	0.1	Negative	5/20/2025	18:43:56
132	Here1 LBP	Apartment	1/2 Bathroom	Door	Casing	Metal	B	0	Negative	5/20/2025	18:44:09
133	Here1 LBP	Apartment	1/2 Bathroom	Room	Wall	Drywall	A	0.3	Negative	5/20/2025	18:44:39
134	Here1 LBP	Apartment	1/2 Bathroom	Room	Wall	Drywall	B	0.4	Negative	5/20/2025	18:45:23

Reading	Job	Room Type	Room	Structure	Member	Substrate	Wall	Result (mg/cm <sup>2</sup> )	Pos/Neg	Date	Time
135	Here1 LBP	Apartment	1/2 Bathroom	Room	Wall	Drywall	B	0	Negative	5/20/2025	18:45:42
136	Here1 LBP	Apartment	1/2 Bathroom	Room	Wall	Drywall	A	0	Negative	5/20/2025	18:46:02
137	Here1 LBP	Apartment	1/2 Bathroom	Room	Wall	Concrete	C	0	Negative	5/20/2025	18:46:30
138	Here1 LBP	Apartment	1/2 Bathroom	Door	Jamb	Concrete	D	0	Negative	5/20/2025	18:46:58
139	Here1 LBP	Apartment	1/2 Bathroom	Door	Casing	Metal	A	0.1	Negative	5/20/2025	18:47:30
140	Here1 LBP	Common	Hallway	Room	Wall	Concrete	A	0	Negative	5/20/2025	18:48:10
141	Here1 LBP	Common	Hallway	Room	Wall	Concrete	C	0	Negative	5/20/2025	18:48:32
142	Here1 LBP	Common	Hallway	Room	Wall	Concrete	C	0.3	Negative	5/20/2025	18:48:50
143	Here1 LBP	Common	Foyer	Room	Wall	Drywall	B	0.3	Negative	5/20/2025	18:49:25
144	Here1 LBP	Common	Foyer	Room	Wall	Drywall	D	0.2	Negative	5/20/2025	18:49:44
145	Here1 LBP	Common	Foyer	Radiator	Cover	Metal	D	0.1	Negative	5/20/2025	18:50:08
146	Here1 LBP	Common	Multi-Purpose Room	Room	Wall	Drywall	D	0	Negative	5/20/2025	18:52:04
147	Here1 LBP	Common	Multi-Purpose Room	Room	Wall	Drywall	A	0	Negative	5/20/2025	18:53:20
148	Here1 LBP	Common	Multi-Purpose Room	Room	Wall	Drywall	A	0	Negative	5/20/2025	18:53:39
149	Here1 LBP	Common	Multi-Purpose Room	Door	---	Wood	A	0.3	Negative	5/20/2025	18:54:13
150	Here1 LBP	Common	Multi-Purpose Room	Door	Casing	Wood	A	0	Negative	5/20/2025	18:54:32
151	Here1 LBP	Common	Multi-Purpose Room	Door	Casing	Wood	A	0.4	Negative	5/20/2025	18:54:44
152	Here1 LBP	Common	Multi-Purpose Room	Door	Outer Casing	Wood	A	0	Negative	5/20/2025	18:55:14
153	Here1 LBP	Common	Multi-Purpose Room	Door	Jamb	Wood	A	0	Negative	5/20/2025	18:55:37
154	Here1 LBP	Common	Multi-Purpose Room	Window	Sill	Wood	A	0	Negative	5/20/2025	18:56:07
155	Here1 LBP	Common	Multi-Purpose Room	Window	Frame	Wood	A	0	Negative	5/20/2025	18:56:33
<b>156</b>	<b>Here1 LBP</b>	<b>Common</b>	<b>Multi-Purpose Room</b>	<b>Window</b>	<b>Casing</b>	<b>Wood</b>	<b>A</b>	<b>1.4</b>	<b>Positive</b>	<b>5/20/2025</b>	<b>18:57:05</b>
157	Here1 LBP	Common	Multi-Purpose Room	Window	Sash	Wood	A	0.8	Negative	5/20/2025	18:58:36
158	Here1 LBP	Common	Multi-Purpose Room	Window	Sash	Wood	A	0.9	Negative	5/20/2025	18:59:08
<b>159</b>	<b>Here1 LBP</b>	<b>Common</b>	<b>Multi-Purpose Room</b>	<b>Window</b>	<b>Sash</b>	<b>Wood</b>	<b>A</b>	<b>1.2</b>	<b>Positive</b>	<b>5/20/2025</b>	<b>18:59:38</b>
<b>160</b>	<b>Here1 LBP</b>	<b>Common</b>	<b>Multi-Purpose Room</b>	<b>Window</b>	<b>Frame</b>	<b>Wood</b>	<b>A</b>	<b>1</b>	<b>Positive</b>	<b>5/20/2025</b>	<b>19:01:17</b>
161	Here1 LBP	Common	Multi-Purpose Room	Window	Apron	Wood	A	0	Negative	5/20/2025	19:02:38
162	Here1 LBP	Common	Multi-Purpose Room	Window	Frame	Wood	A	0.7	Negative	5/20/2025	19:03:05
163	Here1 LBP	Common	Multi-Purpose Room	Window	Frame	Wood	A	0.8	Negative	5/20/2025	19:03:31
164	Here1 LBP	Common	Multi-Purpose Room	Window	Sill	Wood	A	0.1	Negative	5/20/2025	19:04:06
<b>165</b>	<b>Here1 LBP</b>	<b>Common</b>	<b>Multi-Purpose Room</b>	<b>Window</b>	<b>Casing</b>	<b>Wood</b>	<b>A</b>	<b>2</b>	<b>Positive</b>	<b>5/20/2025</b>	<b>19:04:37</b>
166	Here1 LBP	Common	Multi-Purpose Room	Room	Wall	Drywall	A	0	Negative	5/20/2025	19:05:06
167	Here1 LBP	Common	Multi-Purpose Room	Room	Wall	Drywall	B	0.1	Negative	5/20/2025	19:06:12
168	Here1 LBP	Common	Multi-Purpose Room	Room	Wall	Drywall	C	0	Negative	5/20/2025	19:06:45
169	Here1 LBP	Common	Multi-Purpose Room	Radiator	Cover	Metal	A	0	Negative	5/20/2025	19:07:17
170	Here1 LBP	Common	Multi-Purpose Room	Radiator	Cover	Metal	A	0	Negative	5/20/2025	19:07:31
171	Here1 LBP	Common	Multi-Purpose Room	Closet	Wall	Drywall	B	0.1	Negative	5/20/2025	19:08:19
172	Here1 LBP	Common	Multi-Purpose Room	Closet	Wall	Drywall	B	0.2	Negative	5/20/2025	19:08:31
173	Here1 LBP	Common	Multi-Purpose Room	Closet	Door	Metal	D	0.1	Negative	5/20/2025	19:09:03
174	Here1 LBP	Common	Multi-Purpose Room	Closet	Jamb	Metal	D	0.1	Negative	5/20/2025	19:09:23
175	Here1 LBP	Common	Multi-Purpose Room	Closet	Jamb	Metal	D	0.1	Negative	5/20/2025	19:09:36
176	Here1 LBP	Common	Multi-Purpose Room	Closet	Casing	Metal	D	0.1	Negative	5/20/2025	19:09:53
177	Here1 LBP	Common	Multi-Purpose Room	Closet	Casing	Metal	D	0.1	Negative	5/20/2025	19:10:07
178	Here1 LBP	Common	Multi-Purpose Room	Closet	Casing	Metal	D	0.1	Negative	5/20/2025	19:10:20
179	Here1 LBP	Common	Multi-Purpose Room	Closet	Casing	Metal	D	0.1	Negative	5/20/2025	19:10:33
180	Here1 LBP	Common	Multi-Purpose Room	Room	Wall	Drywall	D	0.1	Negative	5/20/2025	19:10:59
181	Here1 LBP	Apartment	Boiler Room	Stair	Railing	Drywall	D	0.1	Negative	5/20/2025	19:13:29
182	Here1 LBP	Apartment	Boiler Room	Stair	Risers	Concrete	D	0.3	Negative	5/20/2025	19:14:01
183	Here1 LBP	Apartment	Boiler Room	Pipe	Vertical	Metal	C	0	Negative	5/20/2025	19:15:30
184	Here1 LBP	Apartment	Boiler Room	Room	Wall	Concrete	A	0.1	Negative	5/20/2025	19:16:04
185	Here1 LBP	Apartment	Boiler Room	Room	Wall	Concrete	B	0.2	Negative	5/20/2025	19:16:40
186	Here1 LBP	Apartment	Boiler Room	Room	Wall	Concrete	C	0.2	Negative	5/20/2025	19:17:08
187	Here1 LBP	Apartment	Boiler Room	Pipe	Horizontal	Metal	B	0.1	Negative	5/20/2025	19:17:45
188	Here1 LBP	Apartment	Boiler Room	Stair	Wall	Concrete	B	0.2	Negative	5/20/2025	19:18:24
189	Here1 LBP	Apartment	Boiler Room	Room	Wall	Concrete	D	0	Negative	5/20/2025	19:19:01
190	Here1 LBP	Apartment	Boiler Room	HVAC		Metal	C	0.1	Negative	5/20/2025	19:20:48
191	Here1 LBP	Apartment	2nd Flr Hallwall	Room	Wall	Drywall	D	0	Negative	5/20/2025	19:29:37
192	Here1 LBP	Apartment	2nd Flr Hallwall	Room	Wall	Drywall	A	0.3	Negative	5/20/2025	19:30:21
193	Here1 LBP	Apartment	Kitchen 2	Room	Wall	Drywall	A	0.1	Negative	5/20/2025	19:32:14
194	Here1 LBP	Apartment	Kitchen 2	Room	Wall	Drywall	A	0	Negative	5/20/2025	19:32:42
195	Here1 LBP	Apartment	Kitchen 2	Room	Wall	Drywall	D	0	Negative	5/20/2025	19:33:04
196	Here1 LBP	Apartment	Kitchen 2	Room	Wall	Drywall	C	0	Negative	5/20/2025	19:33:25
197	Here1 LBP	Apartment	Kitchen 2	Room	Wall	Drywall	B	0.1	Negative	5/20/2025	19:33:45
198	Here1 LBP	Apartment	Kitchen 2	Room	Wall	Drywall	B	0	Negative	5/20/2025	19:34:24
199	Here1 LBP	Apartment	Kitchen 2	Room	Wall	Drywall	B	0.3	Negative	5/20/2025	19:34:51
200	Here1 LBP	Apartment	Kitchen 2	Room	Wall	Drywall	C	0.1	Negative	5/20/2025	19:35:11
201	Here1 LBP	Apartment	Kitchen 2	Room	Wall	Drywall	D	0.2	Negative	5/20/2025	19:35:29
202	Here1 LBP	Apartment	Kitchen 2	Room	Wall	Drywall	A	0.1	Negative	5/20/2025	19:35:51
203	Here1 LBP	Apartment	Kitchen 2	Door	Jamb	Metal	A	0.1	Negative	5/20/2025	19:36:28
204	Here1 LBP	Apartment	Kitchen 2	Door	Casing	Metal	A	0.2	Negative	5/20/2025	19:38:06

Reading	Job	Room Type	Room	Structure	Member	Substrate	Wall	Result (mg/cm <sup>2</sup> )	Pos/Neg	Date	Time
	Here1 LBP	Apartment	Calibration					0	Negative	5/20/2025	19:39:05
	Here1 LBP	Apartment	Calibration					0.1	Negative	5/20/2025	19:39:18
	Here1 LBP	Apartment	Calibration					0	Negative	5/20/2025	19:39:30
	<b>Here1 LBP</b>	<b>Apartment</b>	<b>Calibration</b>					<b>1.1</b>	<b>Positive</b>	<b>5/20/2025</b>	<b>19:39:44</b>
	<b>Here1 LBP</b>	<b>Apartment</b>	<b>Calibration</b>					<b>1.1</b>	<b>Positive</b>	<b>5/20/2025</b>	<b>19:40:11</b>
	<b>Here1 LBP</b>	<b>Apartment</b>	<b>Calibration</b>					<b>1.1</b>	<b>Positive</b>	<b>5/20/2025</b>	<b>19:49:50</b>
205	Here1 LBP	Apartment	Kitchen 2	Door	Casing	Wood	A	0	Negative	5/20/2025	19:50:59
206	Here1 LBP	Apartment	Kitchen 2	Pipe	Vertical	Metal	C	0.4	Negative	5/20/2025	19:51:28
207	Here1 LBP	Apartment	Kitchen 2	Door	---	Wood	B	0	Negative	5/20/2025	19:52:18
208	Here1 LBP	Apartment	Kitchen 2	Room	Wall	Wood	B	0.1	Negative	5/20/2025	19:52:42
209	Here1 LBP	Apartment	Kitchen 2	Room	Wall	Drywall	C	0.1	Negative	5/20/2025	19:53:06
210	Here1 LBP	Apartment	Kitchen 2	Room	Wall	Drywall	A	0.3	Negative	5/20/2025	19:53:29
211	Here1 LBP	Apartment	Kitchen 2	Room	Wall	Wood	A	0	Negative	5/20/2025	19:53:56
212	Here1 LBP	Apartment	Kitchen 2	Door	Jamb	Wood	B	0.1	Negative	5/20/2025	19:54:27
213	Here1 LBP	Apartment	Kitchen 2	Door	Casing	Wood	B	0	Negative	5/20/2025	19:54:58
214	Here1 LBP	Apartment	Kitchen 2	Door	Casing	Wood	B	0.1	Negative	5/20/2025	19:55:10
215	Here1 LBP	Apartment	Kitchen 2	Door	---	Wood	B	0	Negative	5/20/2025	20:01:09
216	Here1 LBP	Apartment	Kitchen 2	Door	---	Wood	B	0	Negative	5/20/2025	20:01:23
217	Here1 LBP	Apartment	Kitchen 2	Window	Sill	Wood	B	0	Negative	5/20/2025	20:01:50
218	Here1 LBP	Apartment	Kitchen 2	Window	Sill	Wood	B	0	Negative	5/20/2025	20:02:02
219	Here1 LBP	Apartment	Kitchen 2	Window	Casing	Wood	B	0	Negative	5/20/2025	20:02:23
220	Here1 LBP	Apartment	Kitchen 2	Window	Casing	Drywall	B	0.1	Negative	5/20/2025	20:02:42
221	Here1 LBP	Apartment	Kitchen 2	Window	Casing	Metal	D	0	Negative	5/20/2025	20:03:04
222	Here1 LBP	Apartment	Kitchen 2	Room	Wall	Drywall	D	0	Negative	5/20/2025	20:04:11
223	Here1 LBP	Apartment	Kitchen 2	Door	Jamb	Drywall	D	0.1	Negative	5/20/2025	20:04:34
224	Here1 LBP	Apartment	Kitchen 2	Door	Casing	Drywall	D	0	Negative	5/20/2025	20:04:59
225	Here1 LBP	Apartment	Kitchen 2	Door	Casing	Drywall	D	0.1	Negative	5/20/2025	20:05:15
226	Here1 LBP	Apartment	Kitchen 2	Door	Header Trim	Drywall	D	0	Negative	5/20/2025	20:05:51
227	Here1 LBP	Apartment	Kitchen 2	Door	Header	Drywall	D	0	Negative	5/20/2025	20:06:12
228	Here1 LBP	Apartment	Kitchen 2	Window	Sill	Wood	D	0.1	Negative	5/20/2025	20:32:18
229	Here1 LBP	Apartment	Kitchen 2	Window	Sash	Wood	D	0.9	Negative	5/20/2025	20:32:48
230	Here1 LBP	Apartment	Kitchen 2	Window	Sash	Wood	D	0.3	Negative	5/20/2025	20:33:20
<b>231</b>	<b>Here1 LBP</b>	<b>Apartment</b>	<b>Kitchen 2</b>	<b>Window</b>	<b>Sash</b>	<b>Wood</b>	<b>D</b>	<b>1.2</b>	<b>Positive</b>	<b>5/20/2025</b>	<b>20:33:44</b>
232	Here1 LBP	Apartment	Kitchen 2	Window	Sash	Wood	D	0.7	Negative	5/20/2025	20:34:11
233	Here1 LBP	Apartment	Kitchen 2	Window	Jamb	Wood	D	0.7	Negative	5/20/2025	20:35:19
234	Here1 LBP	Apartment	Kitchen 2	Window	Frame	Wood	D	0.6	Negative	5/20/2025	20:36:01
235	Here1 LBP	Apartment	Kitchen 2	Window	Frame	Wood	D	0.7	Negative	5/20/2025	20:37:34
<b>236</b>	<b>Here1 LBP</b>	<b>Apartment</b>	<b>Kitchen 2</b>	<b>Window</b>	<b>Exterior Sash</b>	<b>Wood</b>	<b>D</b>	<b>1.3</b>	<b>Positive</b>	<b>5/20/2025</b>	<b>20:38:41</b>
<b>237</b>	<b>Here1 LBP</b>	<b>Apartment</b>	<b>Kitchen 2</b>	<b>Window</b>	<b>Exterior Sash</b>	<b>Wood</b>	<b>D</b>	<b>1.8</b>	<b>Positive</b>	<b>5/20/2025</b>	<b>20:39:18</b>
<b>238</b>	<b>Here1 LBP</b>	<b>Apartment</b>	<b>Kitchen 2</b>	<b>Window</b>	<b>Exterior Casing</b>	<b>Wood</b>	<b>D</b>	<b>1.7</b>	<b>Positive</b>	<b>5/20/2025</b>	<b>20:39:53</b>
<b>239</b>	<b>Here1 LBP</b>	<b>Apartment</b>	<b>Kitchen 2</b>	<b>Window</b>	<b>Exterior Casing</b>	<b>Wood</b>	<b>D</b>	<b>1.9</b>	<b>Positive</b>	<b>5/20/2025</b>	<b>20:41:25</b>
240	Here1 LBP	Apartment	Kitchen 2	Room	Wall	Drywall	B	0.1	Negative	5/20/2025	20:44:49
241	Here1 LBP	Apartment	Kitchen 2	Window	Sash	Drywall	B	0.7	Negative	5/20/2025	20:45:55
242	Here1 LBP	Apartment	Kitchen 2	Window	Sash	Drywall	B	0.8	Negative	5/20/2025	20:46:25
243	Here1 LBP	Apartment	Kitchen 2	Window	Sash	Drywall	B	0.7	Negative	5/20/2025	20:46:57
244	Here1 LBP	Apartment	Kitchen 2	Window	Sill	Drywall	B	0.2	Negative	5/20/2025	20:47:25
245	Here1 LBP	Apartment	Kitchen 2	Window	Casing	Drywall	B	0.3	Negative	5/20/2025	20:47:50
246	Here1 LBP	Apartment	Kitchen 2	Window	Casing	Drywall	B	0.6	Negative	5/20/2025	20:48:19
247	Here1 LBP	Apartment	Kitchen 2	Window	Casing	Drywall	B	0.9	Negative	5/20/2025	20:48:43
248	Here1 LBP	Apartment	Kitchen 2	Window	Casing	Drywall	B	0.4	Negative	5/20/2025	20:49:45
249	Here1 LBP	Apartment	Kitchen 2	Window	Casing	Drywall	B	0	Negative	5/20/2025	20:50:16
250	Here1 LBP	Apartment	Kitchen 2	Window	Casing	Drywall	B	0	Negative	5/20/2025	20:50:32
251	Here1 LBP	Apartment	Kitchen 2	Window	Exterior Sash	Drywall	B	0.7	Negative	5/20/2025	20:51:43
252	Here1 LBP	Apartment	Kitchen 2	Window	Exterior Sash	Drywall	B	0.2	Negative	5/20/2025	20:52:22
253	Here1 LBP	Apartment	Kitchen 2	Window	Exterior Sash	Drywall	B	0.2	Negative	5/20/2025	20:53:33
	Here1 LBP	Common	Calibration					0	Negative	5/20/2025	20:56:52
	Here1 LBP	Common	Calibration					0	Negative	5/20/2025	20:57:04
	Here1 LBP	Common	Calibration					0	Negative	5/20/2025	20:57:16
	<b>Here1 LBP</b>	<b>Common</b>	<b>Calibration</b>					<b>1.1</b>	<b>Positive</b>	<b>5/20/2025</b>	<b>20:57:29</b>
	<b>Here1 LBP</b>	<b>Common</b>	<b>Calibration</b>					<b>1.1</b>	<b>Positive</b>	<b>5/20/2025</b>	<b>20:57:53</b>
	<b>Here1 LBP</b>	<b>Common</b>	<b>Calibration</b>					<b>1.2</b>	<b>Positive</b>	<b>5/20/2025</b>	<b>20:58:16</b>
254	Here1 LBP ywst	Exterior	House	Room	Wall	Concrete	B	0.2	Negative	5/21/2025	12:54:17
255	Here1 LBP ywst	Exterior	House	Room	Wall	Concrete	B	0.2	Negative	5/21/2025	12:54:40
	Here1 LBP	Apartment	Calibration					0	Negative	5/21/2025	13:11:24
	Here1 LBP	Apartment	Calibration					0.1	Negative	5/21/2025	13:11:38
	Here1 LBP	Apartment	Calibration					0	Negative	5/21/2025	13:11:54
	<b>Here1 LBP</b>	<b>Apartment</b>	<b>Calibration</b>					<b>1.1</b>	<b>Positive</b>	<b>5/21/2025</b>	<b>13:12:09</b>
	<b>Here1 LBP</b>	<b>Apartment</b>	<b>Calibration</b>					<b>1.1</b>	<b>Positive</b>	<b>5/21/2025</b>	<b>13:12:32</b>
	<b>Here1 LBP</b>	<b>Apartment</b>	<b>Calibration</b>					<b>1.1</b>	<b>Positive</b>	<b>5/21/2025</b>	<b>13:12:56</b>
256	Here1 LBP	Apartment	Kitchen 2	Window	Sill	Wood	D	0.1	Negative	5/21/2025	13:14:57

Reading	Job	Room Type	Room	Structure	Member	Substrate	Wall	Result (mg/cm <sup>2</sup> )	Pos/Neg	Date	Time
257	Here1 LBP	Apartment	Kitchen 2	Window	Sash	Wood	D	0.8	Negative	5/21/2025	13:15:19
258	Here1 LBP	Apartment	Kitchen 2	Window	Sash	Wood	D	0.9	Negative	5/21/2025	13:15:44
259	Here1 LBP	Apartment	Kitchen 2	Window	Sash	Wood	D	0.8	Negative	5/21/2025	13:16:12
260	Here1 LBP	Apartment	Kitchen 2	Window	Casing	Wood	D	0.8	Negative	5/21/2025	13:16:48
261	Here1 LBP	Apartment	Kitchen 2	Window	Casing	Wood	D	0.6	Negative	5/21/2025	13:17:16
262	Here1 LBP	Apartment	Kitchen 2	Window	Casing	Wood	D	0.5	Negative	5/21/2025	13:17:46
263	Here1 LBP	Apartment	Kitchen 2	Window	Casing	Metal	A	0	Negative	5/21/2025	13:18:21
264	Here1 LBP	Apartment	Kitchen 2	Window	Casing	Metal	A	0	Negative	5/21/2025	13:18:34
265	Here1 LBP	Apartment	Kitchen 2	Window	Casing	Metal	A	0.1	Negative	5/21/2025	13:18:49
266	Here1 LBP	Apartment	Kitchen 2	Window		Wood	A	0	Negative	5/21/2025	13:19:13
267	Here1 LBP	Apartment	Kitchen 2	Window	Sill	Metal	D	0.2	Negative	5/21/2025	13:20:21
268	Here1 LBP	Apartment	Kitchen 2	Window	Sill	Metal	D	0	Negative	5/21/2025	13:29:00
269	Here1 LBP	Apartment	Kitchen 2	Window	Casing	Metal	D	0.1	Negative	5/21/2025	13:29:40
270	Here1 LBP	Apartment	Kitchen 2	Window	Casing	Metal	D	0	Negative	5/21/2025	13:29:53
271	Here1 LBP	Apartment	Kitchen 2	Window	Frame	Metal	D	0	Negative	5/21/2025	13:30:19
272	Here1 LBP	Apartment	Kitchen 2	Window	Frame	Wood	B	0	Negative	5/21/2025	13:30:52
273	Here1 LBP	Apartment	Kitchen 2	Window	Casing	Wood	B	0	Negative	5/21/2025	13:31:28
274	Here1 LBP	Apartment	Kitchen 2	Window	Casing	Wood	B	0.1	Negative	5/21/2025	13:31:41
275	Here1 LBP	Apartment	Kitchen 2	Cabinets	Door	Wood	B	0.4	Negative	5/21/2025	13:32:24
276	Here1 LBP	Apartment	Kitchen 2	Cabinets	Door	Wood	B	0.1	Negative	5/21/2025	13:32:39
277	Here1 LBP	Apartment	Kitchen 2	Room	Wall	Wood	B	0.5	Negative	5/21/2025	13:33:03
278	Here1 LBP	Apartment	Mens Room	Room	Wall	Drywall	D	0	Negative	5/21/2025	13:34:19
279	Here1 LBP	Apartment	Mens Room	Room	Wall	Drywall	A	0.1	Negative	5/21/2025	13:53:44
280	Here1 LBP	Apartment	Mens Room	Room	Wall	Drywall	C	0.1	Negative	5/21/2025	13:54:11
281	Here1 LBP	Apartment	Mens Room	Room	Wall	Drywall	B	0.1	Negative	5/21/2025	13:54:39
282	Here1 LBP	Apartment	Mens Room	Room	Wall	Wood	B	0	Negative	5/21/2025	13:55:23
283	Here1 LBP	Apartment	Mens Room	Door	---	Wood	C	0	Negative	5/21/2025	13:56:05
284	Here1 LBP	Apartment	Mens Room	Door	Frame	Wood	C	0.1	Negative	5/21/2025	13:56:28
285	Here1 LBP	Apartment	Mens Room	Cabinets	Shelf Support	Wood	C	0	Negative	5/21/2025	13:56:59
286	Here1 LBP	Apartment	Mens Room	Closet	Wall	Drywall	A	0	Negative	5/21/2025	13:57:52
287	Here1 LBP	Apartment	Mens Room	Closet	Wall	Drywall	D	0	Negative	5/21/2025	13:58:11
288	Here1 LBP	Apartment	Mens Room	Closet	Wall	Drywall	C	0.1	Negative	5/21/2025	13:58:34
289	Here1 LBP	Apartment	Mens Room	Closet	Wall	Drywall	B	0	Negative	5/21/2025	13:58:57
290	Here1 LBP	Apartment	Mens Room	Closet	Garbage Chute	Metal	B	0.3	Negative	5/21/2025	13:59:37
291	Here1 LBP	Apartment	Mens Room	Closet	Frame	Wood	B	0.3	Negative	5/21/2025	14:00:01
292	Here1 LBP	Apartment	Mens Room	Closet	Garbage Chute	Wood	B	0	Negative	5/21/2025	14:00:29
293	Here1 LBP	Apartment	Mens Room	Closet	Garbage Chute	Wood	B	0	Negative	5/21/2025	14:00:41
294	Here1 LBP	Apartment	Mens Room	Closet	Shelf	Wood	B	0	Negative	5/21/2025	14:01:07
295	Here1 LBP	Apartment	Mens Room	Closet	Shelf	Wood	B	2.7	Positive	5/21/2025	14:01:21
296	Here1 LBP	Apartment	Mens Room	Closet	Shelf	Wood	B	3.3	Positive	5/21/2025	14:01:39
297	Here1 LBP	Apartment	Mens Room	Closet	Shelf	Metal	B	4	Positive	5/21/2025	14:02:59
298	Here1 LBP	Apartment	Mens Room	Closet	Shelf	Metal	B	2.5	Positive	5/21/2025	14:03:13
299	Here1 LBP	Apartment	Mens Room	Closet	Shelf Support	Metal	B	2.2	Positive	5/21/2025	14:03:36
300	Here1 LBP	Apartment	Mens Room	Closet	Shelf Support	Wood	C	0	Negative	5/21/2025	14:09:41
301	Here1 LBP	Apartment	Mens Room	Closet	Shelf	Wood	C	0	Negative	5/21/2025	14:09:59
302	Here1 LBP	Apartment	Mens Room	Closet	Door Stop	Metal	C	0.3	Negative	5/21/2025	14:11:28
303	Here1 LBP	Apartment	Mens Room	Closet	Door	Metal	C	0	Negative	5/21/2025	14:11:59
304	Here1 LBP	Apartment	Mens Room	Closet	Door	Metal	C	0.1	Negative	5/21/2025	14:12:13
305	Here1 LBP	Apartment	Mens Room	Closet	Door	Metal	C	0	Negative	5/21/2025	14:12:25
306	Here1 LBP	Apartment	Mens Room	Door	Jamb	Metal	C	0	Negative	5/21/2025	14:12:56
307	Here1 LBP	Apartment	Womens Room	Room	Wall	Drywall	A	0	Negative	5/21/2025	14:15:54
308	Here1 LBP	Apartment	Womens Room	Room	Wall	Drywall	C	0.2	Negative	5/21/2025	14:16:13
309	Here1 LBP	Apartment	Womens Room	Door	Jamb	Metal	C	0	Negative	5/21/2025	14:16:40
310	Here1 LBP	Apartment	Womens Room	Door	Jamb	Metal	C	0	Negative	5/21/2025	14:16:53
311	Here1 LBP	Apartment	Womens Room	Door	Jamb	Metal	C	0	Negative	5/21/2025	14:17:11
312	Here1 LBP	Apartment	Womens Room	Door	Jamb	Metal	C	0	Negative	5/21/2025	14:17:24
313	Here1 LBP	Apartment	Womens Room	Door	---	Wood	A	0	Negative	5/21/2025	14:19:14
314	Here1 LBP	Apartment	Womens Room	Door	Frame	Wood	A	0.2	Negative	5/21/2025	14:26:09
315	Here1 LBP	Apartment	Womens Room	Radiator	Cover	Metal	B	0	Negative	5/21/2025	14:26:43
316	Here1 LBP	Apartment	Womens Room	Room	Wall	Drywall	B	0	Negative	5/21/2025	14:27:15
317	Here1 LBP	Apartment	Womens Room	Room	Wall	Drywall	C	0.2	Negative	5/21/2025	14:27:39
318	Here1 LBP	Apartment	Womens Room	Shelf Support		Wood	C	0	Negative	5/21/2025	14:29:05
319	Here1 LBP	Apartment	Womens Room	Room	Ceiling	Wood	C	0.1	Negative	5/21/2025	14:40:19
320	Here1 LBP	Apartment	Bathroom	Room	Ceiling	Wood	C	0	Negative	5/21/2025	14:41:56
321	Here1 LBP	Apartment	Bathroom	Room	Wall	Drywall	D	0	Negative	5/21/2025	14:42:29
322	Here1 LBP	Apartment	Bathroom	Room	Wall	Drywall	C	0	Negative	5/21/2025	14:42:47
323	Here1 LBP	Apartment	Bathroom	Room	Wall	Drywall	B	0	Negative	5/21/2025	14:43:06
324	Here1 LBP	Apartment	Bathroom	Room	Wall	Drywall	A	0.1	Negative	5/21/2025	14:43:26
325	Here1 LBP	Apartment	Bathroom	Room	Chair Rail	Drywall	A	0	Negative	5/21/2025	14:44:03
326	Here1 LBP	Apartment	Bathroom	Door	Jamb	Drywall	A	0	Negative	5/21/2025	14:44:40

Reading	Job	Room Type	Room	Structure	Member	Substrate	Wall	Result (mg/cm <sup>2</sup> )	Pos/Neg	Date	Time
327	Herc1 LBP	Apartment	Bathroom	Door	Casing	Drywall	A	0	Negative	5/21/2025	14:44:58
328	Herc1 LBP	Apartment	Bathroom	Door	Casing	Drywall	A	0	Negative	5/21/2025	14:45:18
329	Herc1 LBP	Apartment	Bathroom	Door	---	Wood	A	0	Negative	5/21/2025	14:45:47
330	Herc1 LBP	Apartment	2nd Floor Hallway	Room	Wall	Drywall	B	0	Negative	5/21/2025	14:46:32
331	Herc1 LBP	Apartment	2nd Floor Hallway	Room	Wall	Drywall	A	0	Negative	5/21/2025	14:46:56
332	Herc1 LBP	Apartment	2nd Floor Hallway	Radiator	Cover	Metal	D	0.3	Negative	5/21/2025	14:47:35
333	Herc1 LBP	Apartment	Hallway 3	Door	Jamb	Metal	B	0	Negative	5/21/2025	14:49:18
334	Herc1 LBP	Apartment	Hallway 3	Door	Casing	Metal	B	0	Negative	5/21/2025	14:49:38
335	Herc1 LBP	Apartment	Hallway 3	Door	Casing	Metal	B	0.1	Negative	5/21/2025	14:49:52
336	Herc1 LBP	Apartment	Hallway 3	Room	Wall	Drywall	A	0	Negative	5/21/2025	14:50:22
337	Herc1 LBP	Apartment	Hallway 3	Room	Wall	Drywall	D	0	Negative	5/21/2025	14:50:45
338	Herc1 LBP	Apartment	Hallway 3	Room	Wall	Drywall	B	0	Negative	5/21/2025	14:51:06
339	Herc1 LBP	Apartment	Storage Room	Room	Wall	Drywall	C	0	Negative	5/21/2025	14:54:30
340	Herc1 LBP	Apartment	Storage Room	Room	Wall	Drywall	D	0	Negative	5/21/2025	14:54:57
341	Herc1 LBP	Apartment	Storage Room	Room	Wall	Drywall	A	0	Negative	5/21/2025	14:55:16
342	Herc1 LBP	Apartment	Storage Room	Room	Wall	Drywall	B	0	Negative	5/21/2025	14:55:35
343	Herc1 LBP	Apartment	Storage Room	Window	Sill	Wood	B	0.2	Negative	5/21/2025	14:56:15
344	Herc1 LBP	Apartment	Storage Room	Window	Sash	Wood	B	0.8	Negative	5/21/2025	14:56:38
345	Herc1 LBP	Apartment	Storage Room	Window	Sash	Wood	B	0.9	Negative	5/21/2025	14:57:05
<b>346</b>	<b>Herc1 LBP</b>	<b>Apartment</b>	<b>Storage Room</b>	<b>Window</b>	<b>Sash</b>	<b>Wood</b>	<b>B</b>	<b>1.2</b>	<b>Positive</b>	<b>5/21/2025</b>	<b>14:57:29</b>
347	Herc1 LBP	Apartment	Storage Room	Window	Casing	Wood	B	0.6	Negative	5/21/2025	14:58:02
348	Herc1 LBP	Apartment	Storage Room	Window	Casing	Wood	B	0.8	Negative	5/21/2025	14:58:25
<b>349</b>	<b>Herc1 LBP</b>	<b>Apartment</b>	<b>Storage Room</b>	<b>Window</b>	<b>Frame</b>	<b>Wood</b>	<b>B</b>	<b>1</b>	<b>Positive</b>	<b>5/21/2025</b>	<b>14:59:18</b>
350	Herc1 LBP	Apartment	Storage Room	Window	Casing	Wood	B	0.8	Negative	5/21/2025	14:59:53
<b>351</b>	<b>Herc1 LBP</b>	<b>Apartment</b>	<b>Storage Room</b>	<b>Window</b>	<b>Casing</b>	<b>Wood</b>	<b>B</b>	<b>1.3</b>	<b>Positive</b>	<b>5/21/2025</b>	<b>15:00:23</b>
<b>352</b>	<b>Herc1 LBP</b>	<b>Apartment</b>	<b>Storage Room</b>	<b>Window</b>	<b>Header</b>	<b>Wood</b>	<b>B</b>	<b>1.1</b>	<b>Positive</b>	<b>5/21/2025</b>	<b>15:04:54</b>
<b>353</b>	<b>Herc1 LBP</b>	<b>Apartment</b>	<b>Storage Room</b>	<b>Window</b>	<b>Exterior Casing</b>	<b>Wood</b>	<b>B</b>	<b>1.1</b>	<b>Positive</b>	<b>5/21/2025</b>	<b>15:05:40</b>
<b>354</b>	<b>Herc1 LBP</b>	<b>Apartment</b>	<b>Storage Room</b>	<b>Window</b>	<b>Exterior Casing</b>	<b>Wood</b>	<b>B</b>	<b>1.3</b>	<b>Positive</b>	<b>5/21/2025</b>	<b>15:07:19</b>
355	Herc1 LBP	Apartment	Storage Room	Radiator	Baseboard	Metal	B	0	Negative	5/21/2025	15:08:04
356	Herc1 LBP	Apartment	Storage Room	Radiator	Baseboard	Metal	B	0	Negative	5/21/2025	15:08:30
357	Herc1 LBP	Apartment	Storage Room	Cabinets	Door	Metal	D	0	Negative	5/21/2025	15:10:56
358	Herc1 LBP	Apartment	Storage Room	Cabinets	Frame	Metal	D	0	Negative	5/21/2025	15:11:17
359	Herc1 LBP	Apartment	Room 2	Window	Sill	Metal	D	0	Negative	5/21/2025	15:12:09
360	Herc1 LBP	Apartment	Room 2	Window	Sill	Wood	B	0.1	Negative	5/21/2025	15:13:12
<b>361</b>	<b>Herc1 LBP</b>	<b>Apartment</b>	<b>Room 2</b>	<b>Window</b>	<b>Frame</b>	<b>Wood</b>	<b>B</b>	<b>1</b>	<b>Positive</b>	<b>5/21/2025</b>	<b>15:13:37</b>
<b>362</b>	<b>Herc1 LBP</b>	<b>Apartment</b>	<b>Room 2</b>	<b>Window</b>	<b>Casing</b>	<b>Wood</b>	<b>B</b>	<b>1.1</b>	<b>Positive</b>	<b>5/21/2025</b>	<b>15:14:09</b>
<b>363</b>	<b>Herc1 LBP</b>	<b>Apartment</b>	<b>Room 2</b>	<b>Window</b>	<b>Sash</b>	<b>Wood</b>	<b>B</b>	<b>1.7</b>	<b>Positive</b>	<b>5/21/2025</b>	<b>15:14:46</b>
<b>364</b>	<b>Herc1 LBP</b>	<b>Apartment</b>	<b>Room 2</b>	<b>Window</b>	<b>Sash</b>	<b>Wood</b>	<b>B</b>	<b>1.2</b>	<b>Positive</b>	<b>5/21/2025</b>	<b>15:15:03</b>
365	Herc1 LBP	Apartment	Room 2	Window	Header	Wood	B	0.6	Negative	5/21/2025	15:15:45
<b>366</b>	<b>Herc1 LBP</b>	<b>Apartment</b>	<b>Room 2</b>	<b>Window</b>	<b>Header</b>	<b>Wood</b>	<b>B</b>	<b>1</b>	<b>Positive</b>	<b>5/21/2025</b>	<b>15:16:17</b>
367	Herc1 LBP	Apartment	Room 2	Room	Wall	Drywall	A	0	Negative	5/21/2025	15:17:42
368	Herc1 LBP	Apartment	Room 2	Room	Wall	Drywall	B	0	Negative	5/21/2025	15:18:02
369	Herc1 LBP	Apartment	Room 2	Room	Wall	Drywall	C	0.1	Negative	5/21/2025	15:18:22
370	Herc1 LBP	Apartment	Room 2	Room	Wall	Drywall	D	0	Negative	5/21/2025	15:18:40
371	Herc1 LBP	Apartment	Room 2	Radiator	Baseboard	Metal	B	0	Negative	5/21/2025	15:19:13
372	Herc1 LBP	Apartment	Room 2	Electric Panel	---	Metal	B	0.4	Negative	5/21/2025	15:19:50
373	Herc1 LBP	Apartment	Room 2	Door	Jamb	Metal	D	0	Negative	5/21/2025	15:20:31
374	Herc1 LBP	Apartment	Room 2	Door	Casing	Metal	D	0	Negative	5/21/2025	15:20:49
375	Herc1 LBP	Apartment	Room 2	Door	Casing	Metal	D	0	Negative	5/21/2025	15:21:01
376	Herc1 LBP	Apartment	Room 3	Door	Casing	Metal	D	0	Negative	5/21/2025	15:21:28
377	Herc1 LBP	Apartment	Room 3	Door	Casing	Metal	D	0	Negative	5/21/2025	15:21:40
378	Herc1 LBP	Apartment	Room 3	Door	Jamb	Metal	D	0	Negative	5/21/2025	15:22:04
379	Herc1 LBP	Apartment	Room 3	Room	Wall	Drywall	D	0	Negative	5/21/2025	15:22:45
380	Herc1 LBP	Apartment	Room 3	Room	Wall	Drywall	C	0.1	Negative	5/21/2025	15:23:05
381	Herc1 LBP	Apartment	Room 3	Room	Wall	Drywall	B	0	Negative	5/21/2025	15:23:29
382	Herc1 LBP	Apartment	Room 3	Room	Wall	Drywall	A	0.1	Negative	5/21/2025	15:23:55
383	Herc1 LBP	Apartment	Room 3	Window	Sill	Wood	B	0.1	Negative	5/21/2025	15:24:24
384	Herc1 LBP	Apartment	Room 3	Window	Frame	Wood	B	0.7	Negative	5/21/2025	15:24:52
<b>385</b>	<b>Herc1 LBP</b>	<b>Apartment</b>	<b>Room 3</b>	<b>Window</b>	<b>Header</b>	<b>Wood</b>	<b>B</b>	<b>1</b>	<b>Positive</b>	<b>5/21/2025</b>	<b>15:25:29</b>
	Herc1 LBP	Apartment	Calibration					0	Negative	5/21/2025	16:21:25
	Herc1 LBP	Apartment	Calibration					0.1	Negative	5/21/2025	16:21:39
	Herc1 LBP	Apartment	Calibration					0	Negative	5/21/2025	16:21:52
	<b>Herc1 LBP</b>	<b>Apartment</b>	<b>Calibration</b>					<b>1.1</b>	<b>Positive</b>	<b>5/21/2025</b>	<b>16:22:05</b>
	<b>Herc1 LBP</b>	<b>Apartment</b>	<b>Calibration</b>					<b>1.1</b>	<b>Positive</b>	<b>5/21/2025</b>	<b>16:22:29</b>
	Herc1 LBP	Apartment	Calibration					0.1	Negative	5/21/2025	20:53:28
	Herc1 LBP	Apartment	Calibration					0.1	Negative	5/21/2025	20:53:40
	Herc1 LBP	Apartment	Calibration					0.1	Negative	5/21/2025	20:53:53
	<b>Herc1 LBP</b>	<b>Apartment</b>	<b>Calibration</b>					<b>1.1</b>	<b>Positive</b>	<b>5/21/2025</b>	<b>20:54:05</b>
	<b>Herc1 LBP</b>	<b>Apartment</b>	<b>Calibration</b>					<b>1.1</b>	<b>Positive</b>	<b>5/21/2025</b>	<b>20:54:29</b>
	<b>Herc1 LBP</b>	<b>Apartment</b>	<b>Calibration</b>					<b>1.1</b>	<b>Positive</b>	<b>5/21/2025</b>	<b>20:55:01</b>

Reading	Job	Room Type	Room	Structure	Member	Substrate	Wall	Result (mg/cm <sup>2</sup> )	Pos/Neg	Date	Time
386	Herc1 LBP	Apartment	Room 3	Door	Jamb	Metal	A	0	Negative	5/21/2025	20:57:23
387	Herc1 LBP	Apartment	Room 3	Door	Jamb	Metal	A	0.1	Negative	5/21/2025	20:57:36
388	Herc1 LBP	Apartment	Room 3	Room	Wall	Drywall	A	0.1	Negative	5/21/2025	20:58:07
389	Herc1 LBP	Apartment	Room 3	Room	Wall	Drywall	B	0.1	Negative	5/21/2025	20:58:30
390	Herc1 LBP	Apartment	Room 3	Room	Wall	Drywall	C	0.1	Negative	5/21/2025	20:58:54
391	Herc1 LBP	Apartment	Room 3	Room	Wall	Drywall	D	0	Negative	5/21/2025	20:59:17
392	Herc1 LBP	Apartment	Room 4	Room	Wall	Drywall	D	0.1	Negative	5/21/2025	20:59:53
393	Herc1 LBP	Apartment	Room 4	Room	Wall	Drywall	B	0	Negative	5/21/2025	21:00:12
394	Herc1 LBP	Apartment	Room 4	Door	---	Wood	B	0	Negative	5/21/2025	21:00:45
395	Herc1 LBP	Apartment	Room 4	Door	Casing	Wood	B	0	Negative	5/21/2025	21:01:08
396	Herc1 LBP	Apartment	Room 4	Room	Wall	Drywall	A	0.1	Negative	5/21/2025	21:01:38
397	Herc1 LBP	Apartment	Room 4	Room	Wall	Drywall	C	0	Negative	5/21/2025	21:02:01
398	Herc1 LBP	Apartment	Room 5	Room	Wall	Drywall	C	0	Negative	5/21/2025	21:02:53
399	Herc1 LBP	Apartment	Room 5	Room	Wall	Drywall	B	0	Negative	5/21/2025	21:03:14
400	Herc1 LBP	Apartment	Room 5	Room	Wall	Drywall	C	0	Negative	5/21/2025	21:03:35
401	Herc1 LBP	Apartment	Room 5	Room	Wall	Drywall	D	0.1	Negative	5/21/2025	21:03:56
<b>402</b>	<b>Herc1 LBP</b>	<b>Exterior</b>	<b>House</b>	<b>Window</b>	<b>Header</b>	<b>Drywall</b>	<b>D</b>	<b>1.1</b>	<b>Positive</b>	<b>5/21/2025</b>	<b>21:10:34</b>
<b>403</b>	<b>Herc1 LBP</b>	<b>Exterior</b>	<b>House</b>	<b>Window</b>	<b>Header</b>	<b>Wood</b>	<b>D</b>	<b>1.3</b>	<b>Positive</b>	<b>5/21/2025</b>	<b>21:11:12</b>
404	Herc1 LBP	Exterior	House	Room	Wall	Concrete	D	0.2	Negative	5/21/2025	21:12:05
405	Herc1 LBP	Exterior	House	Room	Wall	Metal	A	0.4	Negative	5/21/2025	21:12:58
406	Herc1 LBP	Exterior	House	Room	Wall	Metal	D	0.2	Negative	5/21/2025	21:13:17
407	Herc1 LBP	Exterior	House	Window	Sill	Metal	D	0.2	Negative	5/21/2025	21:13:54
<b>408</b>	<b>Herc1 LBP</b>	<b>Exterior</b>	<b>House</b>	<b>Window</b>	<b>Frame</b>	<b>Metal</b>	<b>D</b>	<b>1.8</b>	<b>Positive</b>	<b>5/21/2025</b>	<b>21:14:21</b>
409	Herc1 LBP	Exterior	House	Window	Sash	Metal	D	0.6	Negative	5/21/2025	21:15:17
410	Herc1 LBP	Exterior	House	Window	Sash	Metal	D	0.5	Negative	5/21/2025	21:15:54
<b>411</b>	<b>Herc1 LBP</b>	<b>Exterior</b>	<b>House</b>	<b>Room</b>	<b>Wall</b>	<b>Wood</b>	<b>D</b>	<b>1.4</b>	<b>Positive</b>	<b>5/21/2025</b>	<b>21:17:25</b>
<b>412</b>	<b>Herc1 LBP</b>	<b>Exterior</b>	<b>House</b>	<b>Room</b>	<b>Wall</b>	<b>Wood</b>	<b>D</b>	<b>1.2</b>	<b>Positive</b>	<b>5/21/2025</b>	<b>21:17:47</b>
413	Herc1 LBP	Exterior	House	Window	Apron	Metal	D	0	Negative	5/21/2025	21:18:53
<b>414</b>	<b>Herc1 LBP</b>	<b>Exterior</b>	<b>House</b>	<b>Window</b>	<b>Frame</b>	<b>Metal</b>	<b>D</b>	<b>1.2</b>	<b>Positive</b>	<b>5/21/2025</b>	<b>21:19:27</b>
<b>415</b>	<b>Herc1 LBP</b>	<b>Exterior</b>	<b>House</b>	<b>Room</b>	<b>Wall</b>	<b>Metal</b>	<b>C</b>	<b>2.7</b>	<b>Positive</b>	<b>5/21/2025</b>	<b>21:20:26</b>
416	Herc1 LBP	Exterior	House	Room	Wall	Metal	D	0.1	Negative	5/21/2025	21:21:40
<b>417</b>	<b>Herc1 LBP</b>	<b>Exterior</b>	<b>House</b>	<b>Room</b>	<b>Wall</b>	<b>Wood</b>	<b>D</b>	<b>1.1</b>	<b>Positive</b>	<b>5/21/2025</b>	<b>21:22:02</b>
418	Herc1 LBP	Exterior	House	Window	Sash	Wood	D	0.7	Negative	5/21/2025	21:23:02
<b>419</b>	<b>Herc1 LBP</b>	<b>Exterior</b>	<b>House</b>	<b>Window</b>	<b>Frame</b>	<b>Wood</b>	<b>D</b>	<b>1.7</b>	<b>Positive</b>	<b>5/21/2025</b>	<b>21:23:36</b>
420	Herc1 LBP	Exterior	House	Electric Panel	---	Metal	D	0	Negative	5/21/2025	21:24:38
421	Herc1 LBP	Exterior	House	Room	Wall	Concrete	D	0.1	Negative	5/21/2025	21:25:08
422	Herc1 LBP	Exterior	House	Room	Wall	Concrete	A	0.2	Negative	5/21/2025	21:25:53
<b>423</b>	<b>Herc1 LBP</b>	<b>Exterior</b>	<b>House</b>	<b>Trim</b>	<b>---</b>	<b>Wood</b>	<b>A</b>	<b>1.5</b>	<b>Positive</b>	<b>5/21/2025</b>	<b>21:26:52</b>
424	Herc1 LBP	Exterior	Court Yard	Porch	---	Wood	C	0	Negative	5/21/2025	21:30:43
425	Herc1 LBP	Exterior	Court Yard	Porch	---	Wood	B	0	Negative	5/21/2025	21:31:16
426	Herc1 LBP	Exterior	House	Window	Sill	Metal	C	0.6	Negative	5/21/2025	21:32:02
427	Herc1 LBP	Exterior	House	Window	Sill	Metal	C	0.1	Negative	5/21/2025	21:36:18
<b>428</b>	<b>Herc1 LBP</b>	<b>Exterior</b>	<b>House</b>	<b>Window</b>	<b>Frame</b>	<b>Wood</b>	<b>C</b>	<b>2.6</b>	<b>Positive</b>	<b>5/21/2025</b>	<b>21:36:50</b>
429	Herc1 LBP	Exterior	House	Door	---	Wood	C	0.6	Negative	5/21/2025	21:37:53
430	Herc1 LBP	Exterior	House	Door	Frame	Wood	C	0.1	Negative	5/21/2025	21:38:19
431	Herc1 LBP	Exterior	House	Room	Wall	Wood	C	0	Negative	5/21/2025	21:38:43
432	Herc1 LBP	Exterior	House	Room	Wall	Metal	C	0.2	Negative	5/21/2025	21:39:01
<b>433</b>	<b>Herc1 LBP</b>	<b>Exterior</b>	<b>House</b>	<b>Room</b>	<b>Wall</b>	<b>Metal</b>	<b>D</b>	<b>1.2</b>	<b>Positive</b>	<b>5/21/2025</b>	<b>21:39:25</b>
434	Herc1 LBP	Exterior	House	Door	---	Metal	D	0	Negative	5/21/2025	21:40:43
<b>435</b>	<b>Herc1 LBP</b>	<b>Exterior</b>	<b>House</b>	<b>Door</b>	<b>Casing</b>	<b>Metal</b>	<b>D</b>	<b>1.3</b>	<b>Positive</b>	<b>5/21/2025</b>	<b>21:41:08</b>
436	Herc1 LBP	Exterior	House	Room	---	Metal	C	0.7	Negative	5/21/2025	21:42:12
437	Herc1 LBP	Exterior	House	Room	---	Metal	C	0.9	Negative	5/21/2025	21:42:41
438	Herc1 LBP	Exterior	Court Yard	Railing	N/A	Metal	C	0.1	Negative	5/21/2025	21:44:05
439	Herc1 LBP	Exterior	Court Yard	Railing	N/A	Metal	C	0	Negative	5/21/2025	21:44:27
440	Herc1 LBP	Exterior	House	Room	Wall	Metal	B	0.8	Negative	5/21/2025	21:45:23

Company Viken Detection  
Model Pb200i  
Type XRF Lead Paint Analyzer  
Serial Num. 1905  
App Version Pb200i-5.3.1

**APPENDIX B**  
**BGES' PERSONNEL CERTIFICATIONS**

---

---

# THE ASBESTOS INSTITUTE

*Certifies that*

## **Lisa Vitale**

has attended and received instruction in the EPA approved course

### **AHERA Building Inspector Refresher**

on

### **January 28, 2025**

and successfully completed and passed the competency exam.

Certificate:  
ON-188748-19662-012825

Date of Examination:  
28-Jan-2025

Date of Expiration:  
28-Jan-2026



A. Zwanenburg  
Director



Approved Instructor

**THE ASBESTOS INSTITUTE**

20033 N. 19<sup>th</sup> Ave, Building 6, Phoenix, AZ 85027  
602-864-6564 – [www.theasbestosinstitute.com](http://www.theasbestosinstitute.com)

FL Course # CRS228

*The person receiving this certificate has completed the requisite training for asbestos accreditation under TSCA Title II.*

# United States Environmental Protection Agency

This is to certify that



Lisa Vitale

has fulfilled the requirements of the Toxic Substances Control Act (TSCA) Section 402, and has received certification to conduct lead-based paint activities pursuant to 40 CFR Part 745.226 as:

Inspector

In the Jurisdiction of:

All EPA Administered Lead-based Paint Activities Program States, Tribes and Territories

This certification is valid from the date of issuance and expires December 01, 2027

LBP-I-I275520-1

Certification #

November 17, 2024

Issued On



Adrienne Priselac, Deputy Director

Land, Chemicals & Redevelopment Division

---

---

# THE ASBESTOS INSTITUTE

*Certifies that*

## **Brian Braunstein**

has attended and received instruction in the EPA approved course

### **AHERA Building Inspector Refresher**

on

### **January 11, 2025**

and successfully completed and passed the competency exam.

Certificate:  
ON-188748-19654-011125

Date of Examination:  
11-Jan-2025

Date of Expiration:  
11-Jan-2026



A. Zwanenburg  
Director



Approved Instructor

**THE ASBESTOS INSTITUTE**

20033 N. 19<sup>th</sup> Ave, Building 6, Phoenix, AZ 85027  
602-864-6564 – [www.theasbestosinstitute.com](http://www.theasbestosinstitute.com)

FL Course # CRS228

*The person receiving this certificate has completed the requisite training for asbestos accreditation under TSCA Title II.*

# United States Environmental Protection Agency

This is to certify that



Brian R Braunstein

has fulfilled the requirements of the Toxic Substances Control Act (TSCA) Section 402, and has received certification to conduct lead-based paint activities pursuant to 40 CFR Part 745.226 as:

Risk Assessor

In the Jurisdiction of:

All EPA Administered Lead-based Paint Activities Program States, Tribes and Territories

This certification is valid from the date of issuance and expires May 31, 2028

LBP-R-13453-4

Certification #

April 24, 2025

Issued On



A handwritten signature in black ink, appearing to read "Adrienne Priselac".

Adrienne Priselac, Deputy Director

Land, Chemicals & Redevelopment Division

**APPENDIX C**  
**SITE PHOTOGRAPHS**

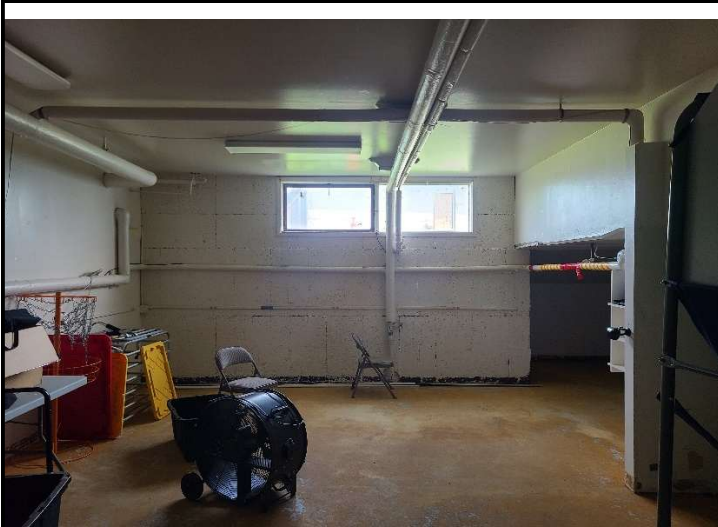


Photo 1. General View of Basement Room In HERC Bldg. 1.

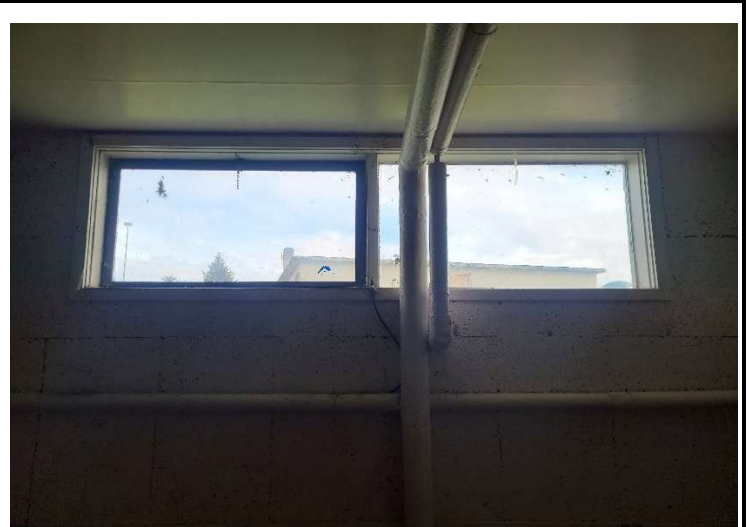


Photo 2. Basement Window; Lead Readings #49-54.



Photo 3. General View of Multi-Purpose Room.



Photo 4. Multi-Purpose Room Window; Lead Readings #156-165.

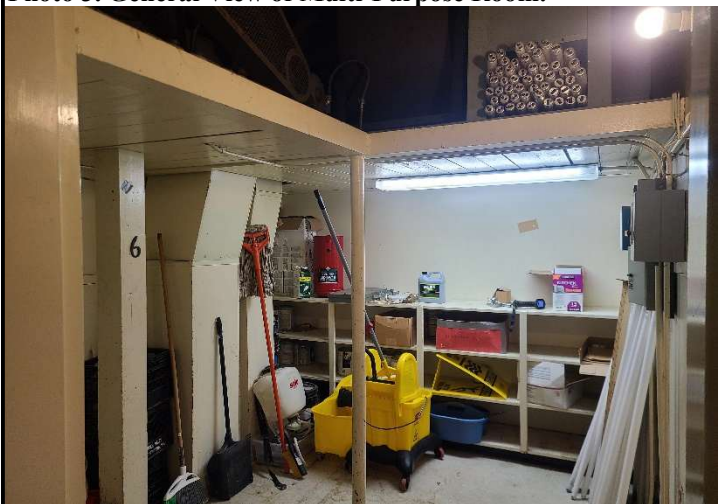


Photo 5. Men's Room Closet; Lead Readings #295-299.



Photo 6. HERC Bldg. 1 Storage Room; Lead Readings #346-354.

C

Homer HERC Buildings  
Homer, Alaska  
Site Photographs



Photo 7. LBP Reading #617; Building 1 Exterior.



Photo 8. LBP Reading #620; Building 1 Exterior (Lookin S.W.).



Photo 9. LBP Reading #622; N.W. Corner of Bldg. 1 (Looking N.).



Photo 10. Building 1 Western Extension (Looking South).



Photo 11. LBP Reading #628; Western Extension (Looking W.).



Photo 12. LBP Reading #633; Western Extension Window.

Homer HERC Buildings  
Homer, Alaska  
Site Photographs



Photo 13. LBP Reading 638; W. Exterior Bldg. 1 (Looking S.).



Photo 14. LBP Reading #640; Building 1 S.W. Entrance.



Photo 15. LBP Reading #642; Bldg. 1 South Exterior Wall.

Homer HERC Buildings  
Homer, Alaska  
Site Photographs