

Crescent River, CCI-11

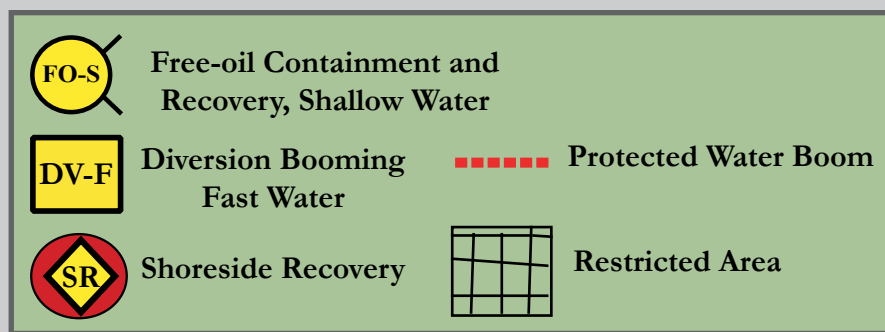


Location of CCI-11

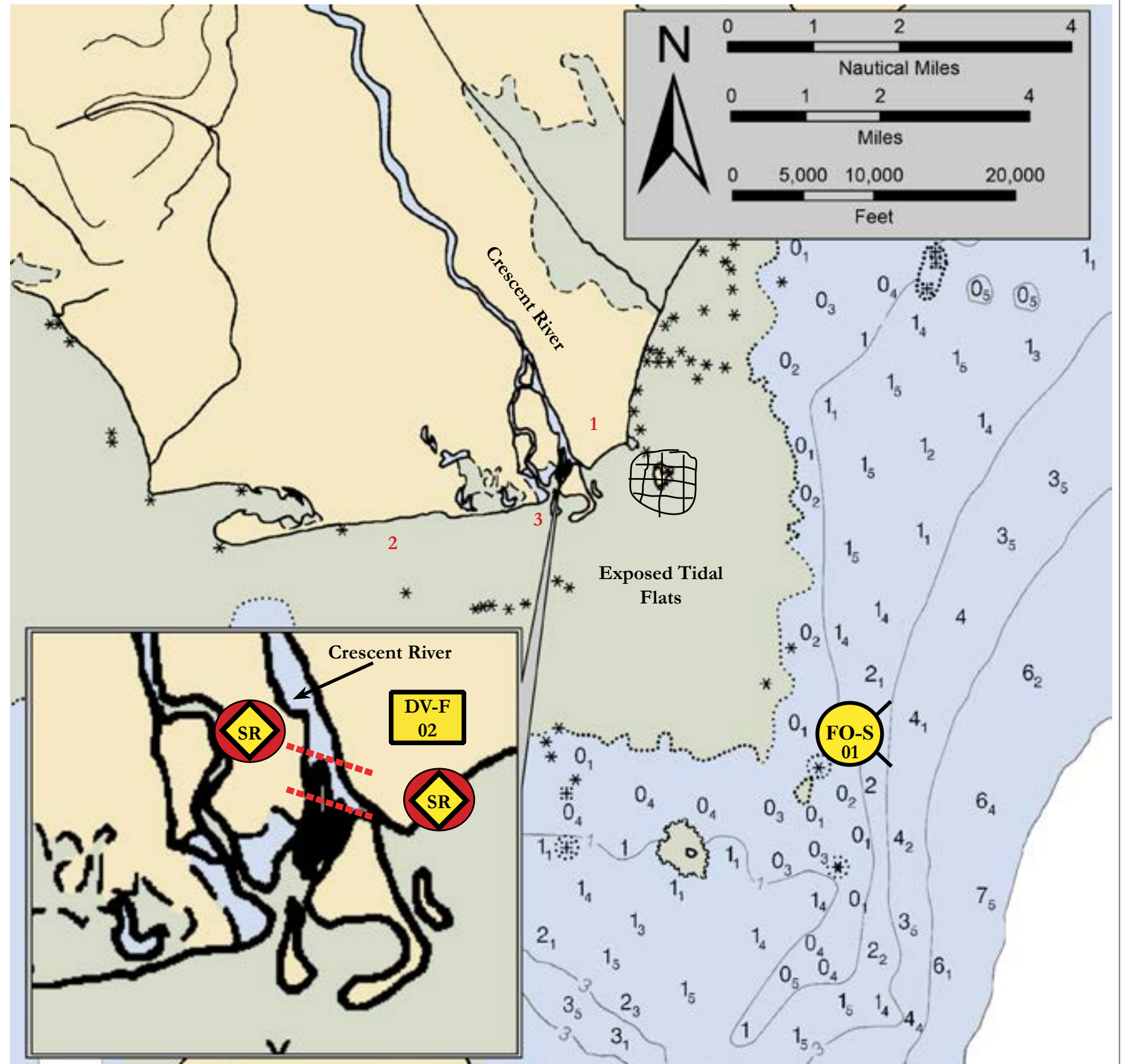


Crescent River, View Northwest

Map
&
Photo
Legend





Geographic Response Strategies for Central Cook Inlet Subarea



Map is not intended for navigational use.

Lat. 60° 13' 37.7" N
Lon. 152° 33' 46.1" W

Depths in Fathoms

ID	Location and Description	Response Strategy	Implementation	Response Resources	Staging Area	Site Access	Resources Protected (months)	Special Considerations
CCI-11-01 	Crescent River Nearshore waters in the general area of: Lat. 60° 13.7' N Lon. 152° 32.9' W	Free-oil Recovery Maximize free-oil recovery in the offshore & nearshore environment near the river.	Deploy nearshore strike teams upwind and up current of the river. Use aerial surveillance to locate incoming slicks.	Deploy multiple nearshore free-oil recovery strike teams as required to maximize interception of oil before it impacts sensitive areas.	-Homer Harbor or offshore support vessel. -Drift River Terminal for helicopter-deployed loads. -Commercial lodge located in north shore of Tuxedni Bay, west of Crescent River mouth.	Via marine waters, See NOAA Charts 16660-1 or 16661-1.	Same as CCI-11-02	Emphasis on offshore and nearshore efforts to keep product off of commercial clamming areas since it would be virtually impossible to protect exposed tidal flats outside of river entrance. Shoal waters and rocks. Vessel masters should have local knowledge.
CCI-11-02 	Crescent River Located on the north point of the entrance to Tuxedni Bay on the west side of Cook Inlet in Lake Clark National Park. Features include exposed tidal flats and marsh habitat around entrance with mudflats that extend outward to the inlet/bay up to 2 mi. at low water. Lat. 60° 13.7' N Lon. 152° 32.9' W River Channel -Very shallow and only navigable with small shallow draft skiffs at high water. Minimum water needed is +13 ft. on Tuxedni Channel tides. -No defined channel entrance -Moderate currents -River is approximately 500 ft. wide -Tidally influenced to approximately 100 yds. Upstream of grass line Docks -Work barge located on north shore of Tuxedni Bay	Diversion Divert spilled product to designated collection sites upstream of grass banks. Recovery spilled product at designated collection sites. Trained crews should haze birds out of river mouth and adjacent marsh areas, once a hazing permit is issued. Seasonal Restriction River iced-in/not navigable from approximately November to April.	Place 1000 ft. of diversion boom split in two placements to divert spilled product to shoreside collection sites. Collect product with two shoreside collection units.	Deployment Equipment 5 ea. 200 ft. river boom units (split in two placements) 2 ea. Protected water skimming systems 12 ea. 40 lb. anchor systems 2 ea. onshore storage units 4000 ft. line 1 ea. wildlife hazing kit Support 2 ea. vessel Class 6 2 ea. shelter. Hip waders for personnel 2 ea. ATV if locally available Personnel/Shift 8 ea. deploy & set-up 4 ea. tend & maintain	Localized elevated clearings near deployment sites Bush pilot landing area on adjacent beach used by commercial clamming industry Services – none Security – none Support - shelter	National Park Service Permit required to implement this strategy. FOSC Historic Properties Title 16 permit may be required to work inside river. Contact environmental Unit of the Unified Command for permits. East-shore: Possible marine access with shallow draft skiffs at high water (May-September). Helicopter & small fixed wing aircraft on wheels. ATV's & four wheel drive vehicles from local commercial clammers (if available). Seasonal Restriction River iced-in/not navigable from approximately November-April.	Tidal marshes (all year) Salmon migration and spawning (May-October) Intertidal salmon spawning (July-September) Waterfowl and shorebird concentrations (May-September) Fishing (July-September) Heavy recreational use (June-September) Commercial fishing (June-September)	High concentration of brown bears in summer months. Working on banks of the river should be no problem. Take care not to work or walk on oiled shoreline, to avoid driving oil into the soils. Transport and disposal of recovered product needs to be resolved. Access above intertidal area will have to be resolved with landowners before setting anchors or staging areas. Seasonal Summer response only. Limited winter access/river and shoreline ice-covered. The FOSC Historic Properties Specialist should INSPECT site prior to operations. Inspection should be performed as the circumstances of the emergency allow. The FOSC Historic Properties Specialist should MONITOR on-site operations. Monitoring should be performed as the circumstances of the emergency allow.

1-Stage at localized elevated clearing near deployment site with helicopter or mobilize with ATVs. Position 60° 13.78 N, 152° 32.88 W is nearest skiff access at +13 ft. on Tuxedni Channel tides.

2-Small fixed wing bush landing area on beach adjacent to river entrance used by commercial clamming industry.

3-Small shallow-draft skiff may be able to navigate at high water.