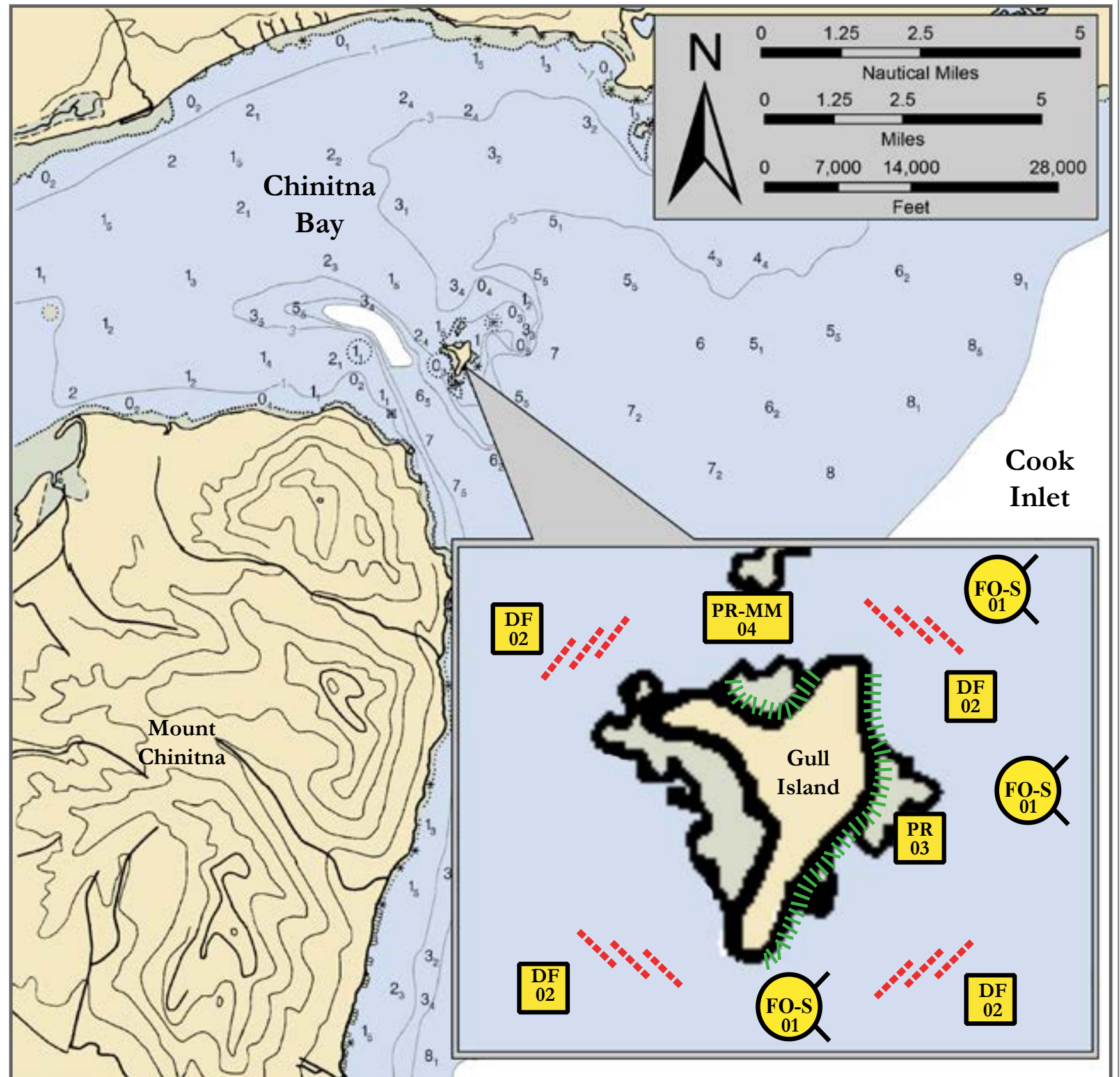




# Gull Island, CCI-09



## Geographic Response Strategies for Central Cook Inlet/Lake Clark National Park

Map  
&  
Photo  
**Legend**







Gull Island, View South

- PR** Passive Recovery
- DF** Deflection Booming
- PR-MM** Passive Recovery-Marine Mammal
- FO-S** Free-oil Recovery, Shallow Water
- Protected-water Boom** (indicated by red dashed lines)

Map is not intended for navigational use.

Lat. 59° 50' 23.2" N  
Lon. 152° 59' 19.8" W

Depths in Fathoms

ID	Location and Description	Response Strategy	Implementation	Response Resources	Staging Area	Site Access	Resources Protected (months)	Special Considerations
CCI-09-01 	<b>Gull Island</b> Nearshore waters in the general area of:  Lat. 59° 49.99' N Lon. 152° 59.42' W	<b>Free-oil Recovery</b>  Maximize free-oil recovery in the offshore & nearshore environment of Gull Island depending on spill location and trajectory.	Deploy nearshore strike teams upwind and up current of Chinitna Bay.  Use aerial surveillance to locate incoming slicks.	Deploy multiple nearshore free-oil recovery strike teams as required to maximize interception of oil before it impacts sensitive areas and as it is deflected from the island.	Homer Harbor or designated marine staging.	Via marine waters, See NOAA Charts 16661-1.	Same as CCI-09-02	Vessel master should have local knowledge.  Use extreme caution, shoal waters with numerous reefs and rocks.
CCI-09-02 	<b>Gull Island</b> In the general area of:  Lat. 59° 50.11' N Lon. 152° 59.23' W	<b>Deflection</b>  Deflect incoming oil away from Gull Island shoreline and back into the channel for free-oil recovery.	Due to Gull Islands exposed location, this tactic should be implemented in calm sea states and should be removed if the weather deteriorates.  Using aerial survey, determine the trajectory of the oil and its possible impact on the island.  Deploy boom and anchor system with skiffs (class 6).  Cascade 5 X 300 ft. sections of protected-water boom offshore at a proper angle to deflect oil from the shoreline of Gull Island.  Anchors should be set and ready for switching the array with the change in tides.  Tend throughout the tide.	<b>Deployment Equipment</b> 1500 ft. protected-water boom 15 ea. medium anchor systems  <b>Vessels</b> 1 ea. class 3/4 1 ea. class 6  <b>Personnel/Shift</b> 5 ea. vessel crew  <b>Tending Vessels</b> 1 ea. class 3/4 1 ea. class 6  <b>Personnel/Shift</b> 3 ea. vessel crew	Vessel platform	Via marine waters  Chart 16661-1	<b>Birds</b> -seabird and waterfowl concentration  <b>Marine mammals</b> -beluga whales, otters, seals  <b>Human use</b> -commercial fishing, subsistence, high recreation use  <b>Habitat</b> - sheltered rocky shores, exposed rocky shores	Vessel master should have local knowledge.  Local bear viewing lodges may provide local knowledge and support for operations.  Site surveyed: 9/12/10  During winter months formation of pan ice in the bays may occur during colder periods. In the event of ice conditions, focus on free-oil recovery.  Tested: not yet
CCI-09-03 	<b>Gull Island</b> a. Lat. 59° 50.41 N Lon. 152° 59.23 W  b. Lat. 59° 50.52 N Lon. 152° 59.40 W	<b>Passive Recovery</b>  Place and secure passive recovery along the shoreline of Gull Island.	Use skiffs (class 6) to approach the island and stage the sorbents. Place and anchor snare line or sorbent boom along the shoreline of Gull Island.  Replace as necessary to maximize the recovery.  Boom Lengths:  a. 1800 ft.  b. 700 ft.	<b>Deployment Equipment</b> 2500 ft. snare line or sorbent boom 12 ea. Anchor stakes  <b>Vessels/Personnel/Shift</b> Same as CCI-09-02  <b>Tending Vessels/Personnel/Shift</b> Same as CCI-09-02	Vessel platform	Via marine waters  Chart 16661-1	Same as CCI-09-02	REPORT any cultural resources found during operations to the FOSC Historic Properties Specialist. Reporting should be performed as the circumstances of the emergency allow.  Use snare line for persistent oil sand sorbent boom for non-persistent oils.  Tested: not yet
CCI-09-04 	<b>Gull Island</b> Actual location of this protection strategy will depend on field assessment at the time of deployment. In the general area of:  Lat. 59° 50.41 N Lon. 152° 59.23 W	<b>Passive Recovery-MM</b>  Minimize impact to marine mammal haulouts.  Deploy after consulting with NMFS.	If seals are present on the beaches of Gull Island, broadcast sorbent material on haulout immediately prior to or after oil spill impact.  Monitor after each high tide and replace as necessary.  Minimize disturbance of marine mammals.	<b>Deployment Equipment</b> Broadcast sorbent materials 1 ea. Broadcasting system  <b>Vessels/Personnel/Shift</b> Same as CCI-09-02  <b>Tending Vessels/Personnel/Shift</b> Same as CCI-09-02	Vessel platform	Via marine waters  Chart 16661-1	Same as CCI-09-02	REPORT any cultural resources found during operations to the FOSC Historic Properties Specialist. Reporting should be performed as the circumstances of the emergency allow.  Consult with the National Marine Fisheries Service prior to implementing this tactic.