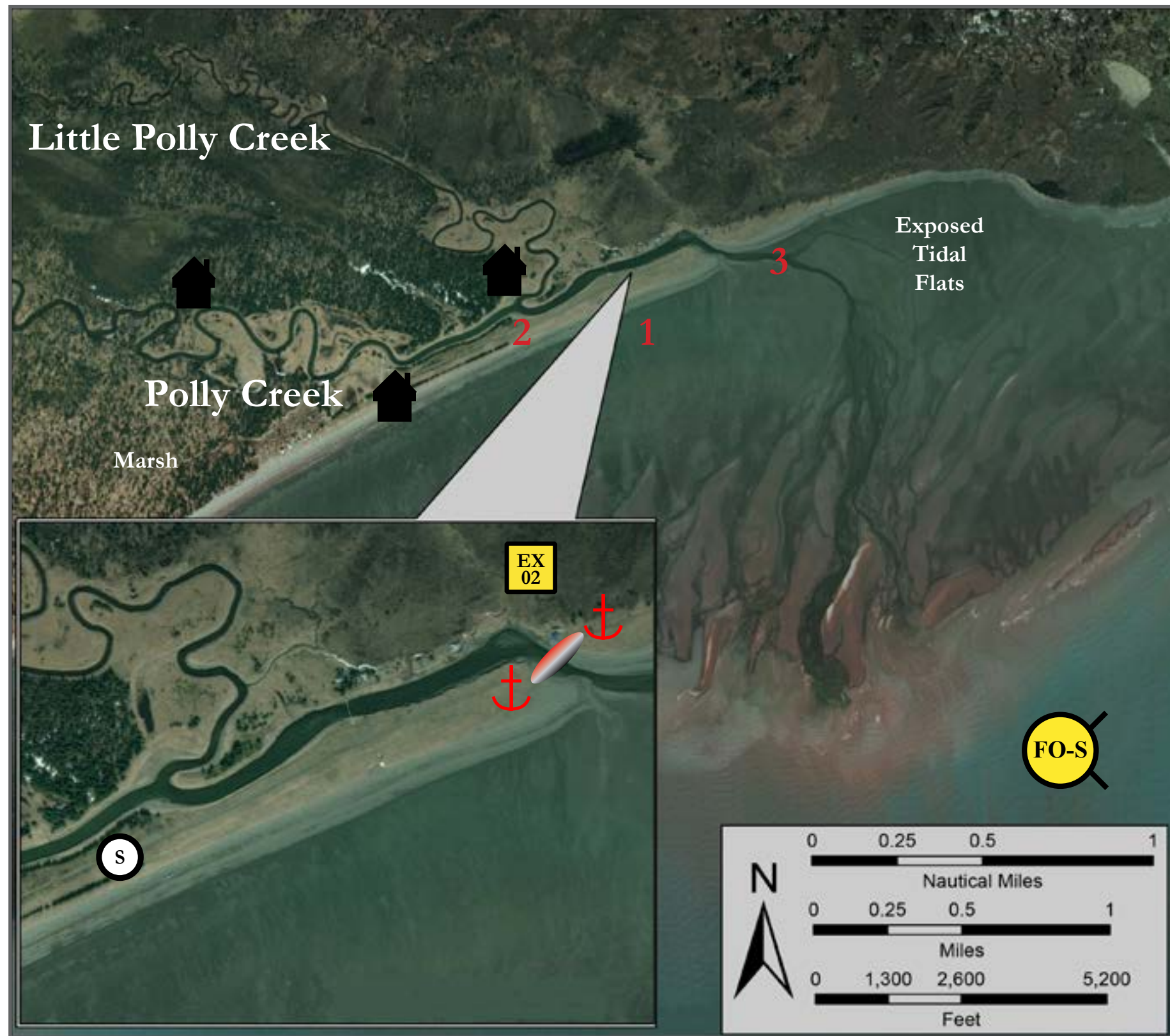


Polly Creek, CCI-13



Location of CCI-13

Geographic Response Strategies for Central Cook Inlet Subarea



Map is not intended for navigational use.






Lat. 60° 17' 2.0" N
Lon. 152° 27' 26.2" W



Depths in Fathoms

Map
&
Photo
Legend



Polly Creek, View West

-  Staging Area
-  Free-oil Skimming and Recovery, Shallow Water
-  Exclusion Booming
-  Shore-seal Boom
-  Cabins

ID	Location and Description	Response Strategy	Implementation	Response Resources	Staging Area	Site Access	Resources Protected (months)	Special Considerations
CCI-13-01 	Polly Creek Nearshore waters in the general area of: Lat. 60° 16.9' N Lon. 152° 26.90' W	Free-oil Recovery Maximize free-oil recovery in the offshore & nearshore environment outside the mudflats.	Deploy free-oil recovery strike teams upwind and up current of the river. Use aerial surveillance to locate incoming slicks.	Deploy multiple nearshore free-oil recovery strike teams as required to maximize interception of oil before it impacts sensitive areas.	Homer Harbor or offshore support vessel. Drift River Facility for helicopter-deployable equipment.	Via marine waters See NOAA Charts 16660-1 or 16661-1. Helicopter deployment to Polly Creek.	Same as CCI-13-02	Emphasis on offshore and nearshore efforts to keep product off of commercial clamming areas since it would be virtually impossible to protect exposed tidal flats and habitat outside of the creek entrance. Shoal waters and rocks. Vessel masters should have local knowledge.
CCI-13-02 	Polly Creek Located approximately 1.8 mi. southwest of Redoubt Point on the west side of Cook Inlet. Features include exposed tidal flats and marsh habitat around the entrance with mudflats that extend outward to the inlet up to 1 mi. at low water. In the general area of: Lat. 60° 16.9 N Lon. 152° 26.9 W	Exclusion Exclude spilled product from entering creek near entrance/grass banks. Trained crews should haze birds out of river mouth and adjacent marsh areas, once a hazing permit is issued. Seasonal Restriction Creek ice-in/not navigable from approximately November to April.	Place 200 ft. of exclusion boom (Shore-seal) across creek immediately upstream of grass banks. Allows a double boom at mouth for exclusion.	Deployment Equipment 1 ea. 200 ft. shore-seal exclusion unit 1 ea. inflator and fill pump package with jumper hoses 4 ea. 40 lb. anchor systems or metal fence posts (8) 500 ft. line 1 ea. wildlife hazing kit Support 1 ea. Skiff (if not delivered by helicopter). 1 ea. shelter. Hip waders for personnel Personnel/Shift 4 ea. deploy & set-up 2 ea. tend & maintain (periodically)	Localized elevated clearing near deployment site. Bush pilot landing area on adjacent beach used by commercial clamming industry. Services – none Security – none Support – shelter -Cabins, tents, ATVs and vehicles are available from local operators during the summer.	National Park Service Permit required to implement this strategy. Title 16 permit may be required to work inside creek. Contact Environmental Unit of the Unified Command for permits. Possible marine access with skiff (May-September). Helicopter on beach. Bush pilot landing area on adjacent beach used by commercial clamming industry. Seasonal Restriction Creek iced-in/not navigable from approximately November-April.	Tidal marshes (all year) Salmon migration and spawning (May-October) Intertidal salmon spawning (July-September) Waterfowl and shorebird concentrations (May-September) Fishing (July-September) Recreational use (June-September) Commercial fishing (June-September)	High concentration of brown bears in summer months. FOSC Historic Properties Specialist should INSPECT site prior to operations. Inspection should be performed as the circumstances of the emergency allow. The FOSC Historic Properties Specialist should MONITOR on-site operations. Monitoring should be performed as the circumstances of the emergency allow. Working on banks of the creek should be no problem. Take care not to work or walk on oiled shoreline, to avoid driving oil into the soils. Access above intertidal area will have to be resolved with landowners before setting anchors or staging areas. Seasonal Summer response only. Limited winter access/creek and shoreline ice-covered.

- 1 – Beach landing area used by the commercial clamming industry.
2 – Staging at localized elevated clearing near deployment site with helicopter.
3 – Small shallow draft skiff may be able to navigate at high water.