

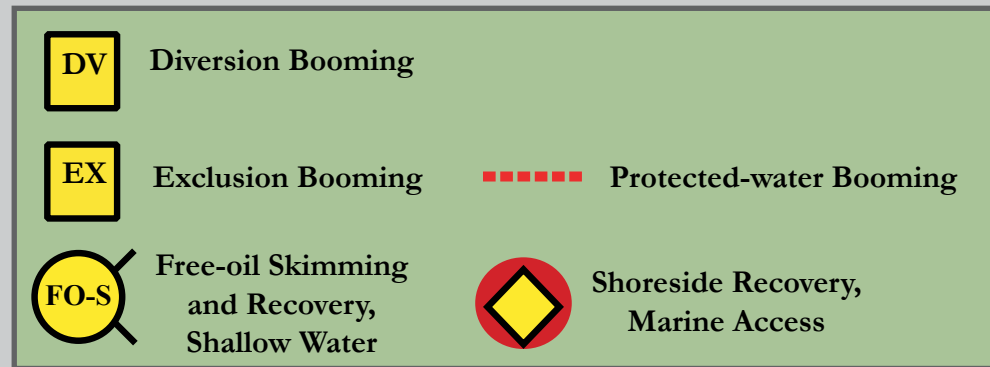


Location of SE05-11



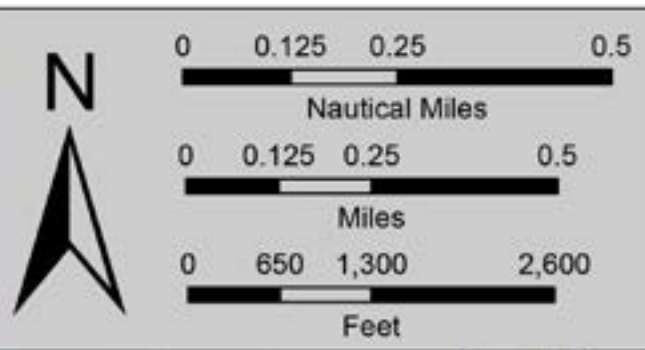
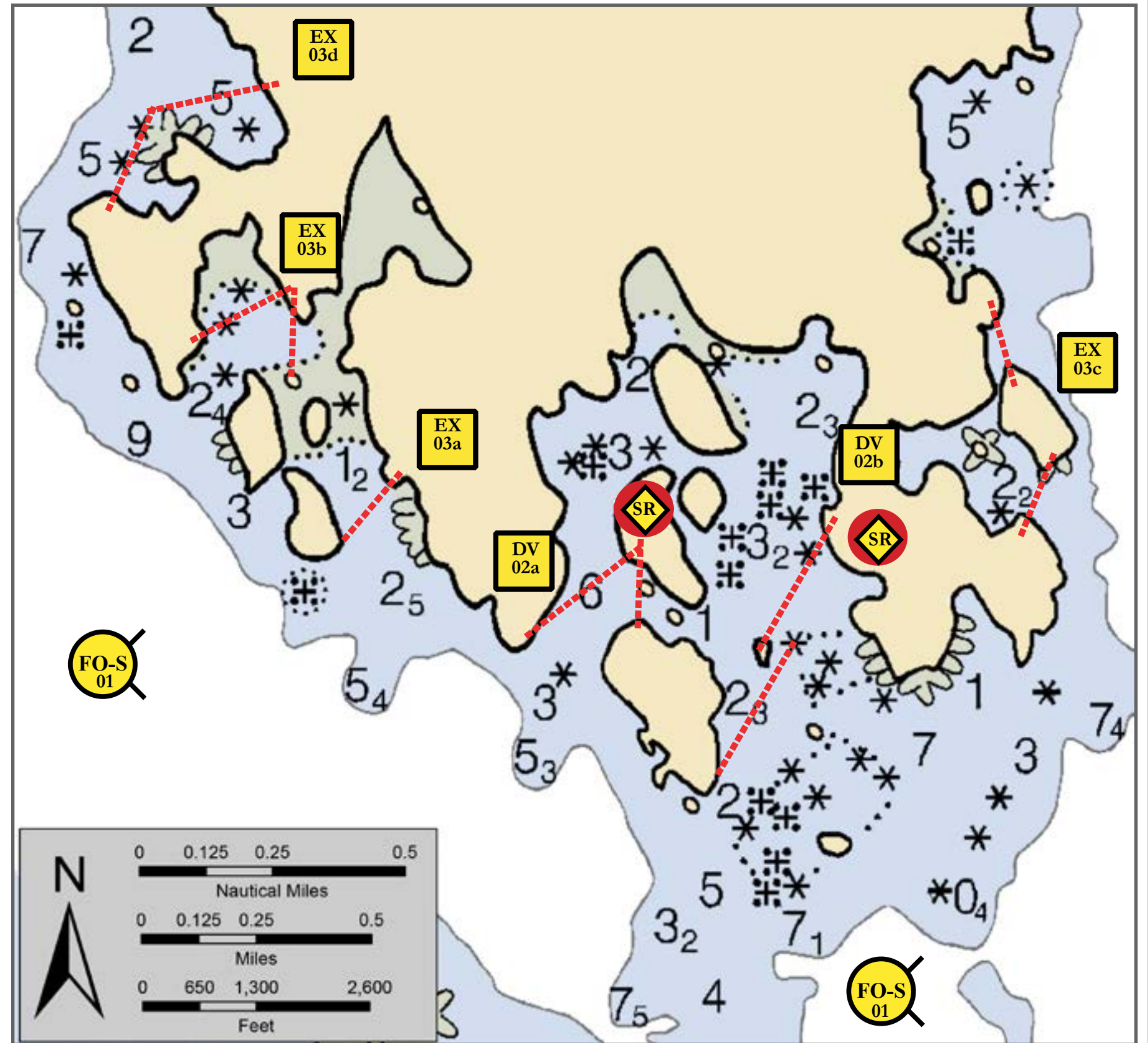
Middle Island, View North

Map & Photo Legend



Geographic Response Strategies for Southeast Alaska Subarea




Middle Island, SE05-11



Map is not intended for navigational use.

Lat. 57° 5' 16.3" N
 Lon. 135° 27' 10.5" W

Depths in Fathoms

ID	Location and Description	Response Strategy	Implementation	Response Resources	Staging Area	Site Access	Resources Protected (months)	Special Considerations
SE-05-11-01 	Middle Island (Southwest cove) Nearshore waters in the general area of: Lat. 57° 05 N N Lon. 135° 27 W	Free-oil Recovery Maximize free-oil recovery in the offshore & nearshore environment of Middle Island.	Deploy free-oil recovery strike teams upwind and up current of Bruin Bay. Use aerial surveillance to locate incoming slicks.	Deploy multiple nearshore free-oil recovery strike teams as required to maximize interception of oil before it impacts sensitive areas.	Sitka Harbor, Sitka Ferry Terminal	Via marine waters Chart 16648-1	Same as SE-05-11-02	REPORT any cultural resources found during operations to FOSC Historic Properties Specialist. See Figure G-3-10 for equipment locations.
SE-05-11-02 	Middle Island (South end) a. Lat. 57° 05.3' N Lon. 135° 27.0' W b. Lat. 57° 05.3 N Lon. 135° 26.6 W	Divert and Collect Divert oil to shore-side collection points determined by spill source and trajectory.	Use class 2 and class 3/4 vessels with deck space to transport equipment. Place protected-water boom, with tidal-seal on each end using class 6 skiffs. Deploy shoreside recovery units with shallow-water skiffs. Boom arrays a. 600 ft and 200 ft. sections deployed in chevron with shoreside recovery at apex. b. Two 300 ft. sections deployed in cascade or stepped array to shoreside recovery	Deployment Equipment 1400 ft. protected-water boom. 5 ea ~40 lbs. anchor systems for securing boom at approximately 300 ft. intervals. 6 ea. 50 ft. of tidal-seal boom units 6 anchor stakes 2 ea. shoreline recovery units Vessels 2 ea. class 2 2 ea. class 3/4 2 ea. class 6 Personnel Shift 18 ea vessel crew Tending Vessels 1 ea. class 3/4 2 ea. class 6 Personnel/Shift 5 ea. vessel crew	See SE-05-11-01	See SE-05-11-01	Fish -herring spawning Habitat -kelp and eelgrass beds, sheltered tidal flats, sheltered rocky shore, intertidal diversity Marine mammals -harbor seals, whales Marine invertebrates Human use-subsistence use, high recreational use, private residences	Tested: not yet Surveyed: 8/27/02 TLR
SE-05-11-03 	Middle Island (south end) a. (apex or mid-point) Lat. 57° 05.57 N Lon. 135° 27.64 W b. Lat. 57° 05.5 N Lon. 135° 27.6 W c. Lat 57° 05.5 N Lon. 135° 26.3 W d. Lat. 57° 5' 45.1" N Lon. 135° 27' 53.0" W	Exclusion Exclude oil from small coves on southeast and southwest sides of Middle Island.	Use class 2 and class 3/4 vessels with deck space to transport equipment. Place protected-water boom, with tidal-seal on each end using class 6 skiffs. Boom Arrays a. Three 500 ft. boom strings as shown b. Two 300 ft. boom strings as shown c. Two 300 ft. boom strings as shown d. Two 750 ft. boom strings as shown	Deployment Equipment 4200 ft. protected-water boom. 9 ea ~40 lbs. anchor systems for securing boom at mid-points, if needed. 10 ea. 50 ft. of tidal-seal boom units 12 anchor stakes Vessels/Personnel/Tending See SE05-11-02	See SE-05-11-01	See SE-05-11-01	See SE-05-11-02	Tested: Not yet Surveyed: 8/27/02 TLR