

Map & Photo Legend



East Forelands, CCI-08-01 as viewed from the Northeast.



Free-oil Containment and Recovery, Shallow Water – Located up current and upwind to maximize recovery.



Passive Collection – marine or shoreside access.



Snare Boom

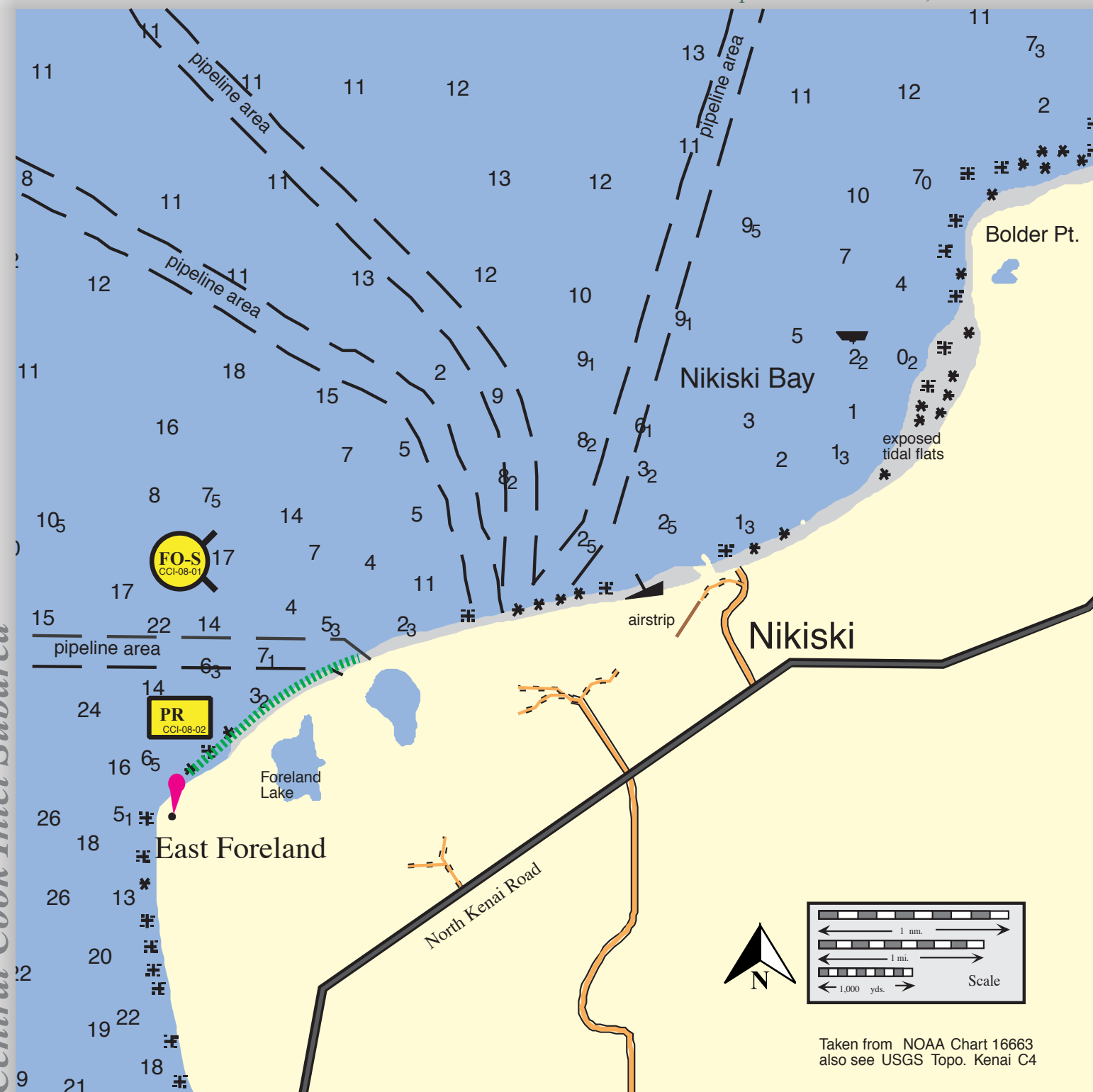


East Forelands, CCI-08-01 as viewed from the Southwest.

Geographic Response Strategies for Central Cook Inlet Subarea

East Forelands, CCI-08

Center of map at 60° 44.3' N Lat., 151° 21.6' W Lon.



This map is not intended to be used for navigation.

Soundings in fathoms

ID	Location and Description	Response Strategy	Implementation	Response Resources	Staging Area	Site Access	Resources Protected (months)	Special Considerations
CCI-08-01	East Forelands Nearshore waters in the general area of: Lat. 60° 44.3 N Lon. 151° 21.6 W	* Maximize on-water recovery in the offshore & nearshore environment / outside the mudflats.	Deploy nearshore strike teams upwind and up current of the beach. Use aerial surveillance to locate incoming oil.	Multiple nearshore free-oil recovery strike teams as required to maximize interception of oil before it impacts sensitive areas.	• Kenai Harbor or offshore support vessel.	Via marine waters See NOAA Chart 16663-1.	Same as CCI-08-02.	Strong tidal currents, shoal waters and rocks. Vessel master should have local knowledge.
CCI-08-02	East Forelands Located north of Nikiski on the east side of Cook Inlet. Features include exposed coarse grain sand beach shoreline with steep bluff. Lat. 60° 43.7 N Lon. 151° 23.4 W	* Deploy passive collection resources (snare boom) along shoreline. * Trained crews should haze birds out of immediate vicinity, once a hazing permit is issued. Seasonal Restriction Shoreline is typically not armored with ice and should allow access and deployment in winter.	Place 3600’+ of snare boom along shoreline near high tide to minimize impact and passively collect spilled product. Resources listed are typical of one passive unit. Multiple units may be required depending on the area/quantity of shoreline to be protected.	Equipment 1 ea. passive collection unit 3600 + ft. Snare Boom 1000 ft. line Misc. anchor materials 1 ea. wildlife hazing kit Support 1 ea. shelter. ATV’s with trailers (or) Vessels class #5/6 (or) Trucks Hip waders for personnel Personnel/Shift 4 ea. deploy & set-up 2 ea. tend & maintain (periodically)	• Rig Tenders Dock • OSK Dock • Offshore support vessel • Local fish camps • Services - none. • Security - none. • Support - shelter.	REPORT any cultural resources found during operations to the FOSC Historic Properties Specialist. Shallow draft skiffs launched from offshore support vessel. Helicopter on beach. Beach access with ATV’s or trucks from OSK Dock & Salamatof Beach. Seasonal Restriction none.	• Salmon migration (May - October) • Waterfowl and shore bird concentrations (May - September) • Fishing (July - September) • Recreational use (June - September)	• Very difficult and unsafe to protect exposed tidal flats. • Take care not to work or walk on oiled shoreline, to avoid driving oil into the soils. • Shoreline seasonally used for set nets. • Passive collection can generate considerable solid waste. Resources should be periodically monitored and replaced when saturated. Seasonal Shoreline is typically not ice armored and should allow access and deployment.