









Chuitna River, CCI-19-01 as viewed from the Southeast.

Map & Photo Legend

-  Free-oil Containment and Recovery, Shallow Water – Located up current and up-wind to maximize recovery.
-  Diversion Booming
-  Protected-water Boom
-  Shoreside Recovery
-  Staging Area
-  Airport

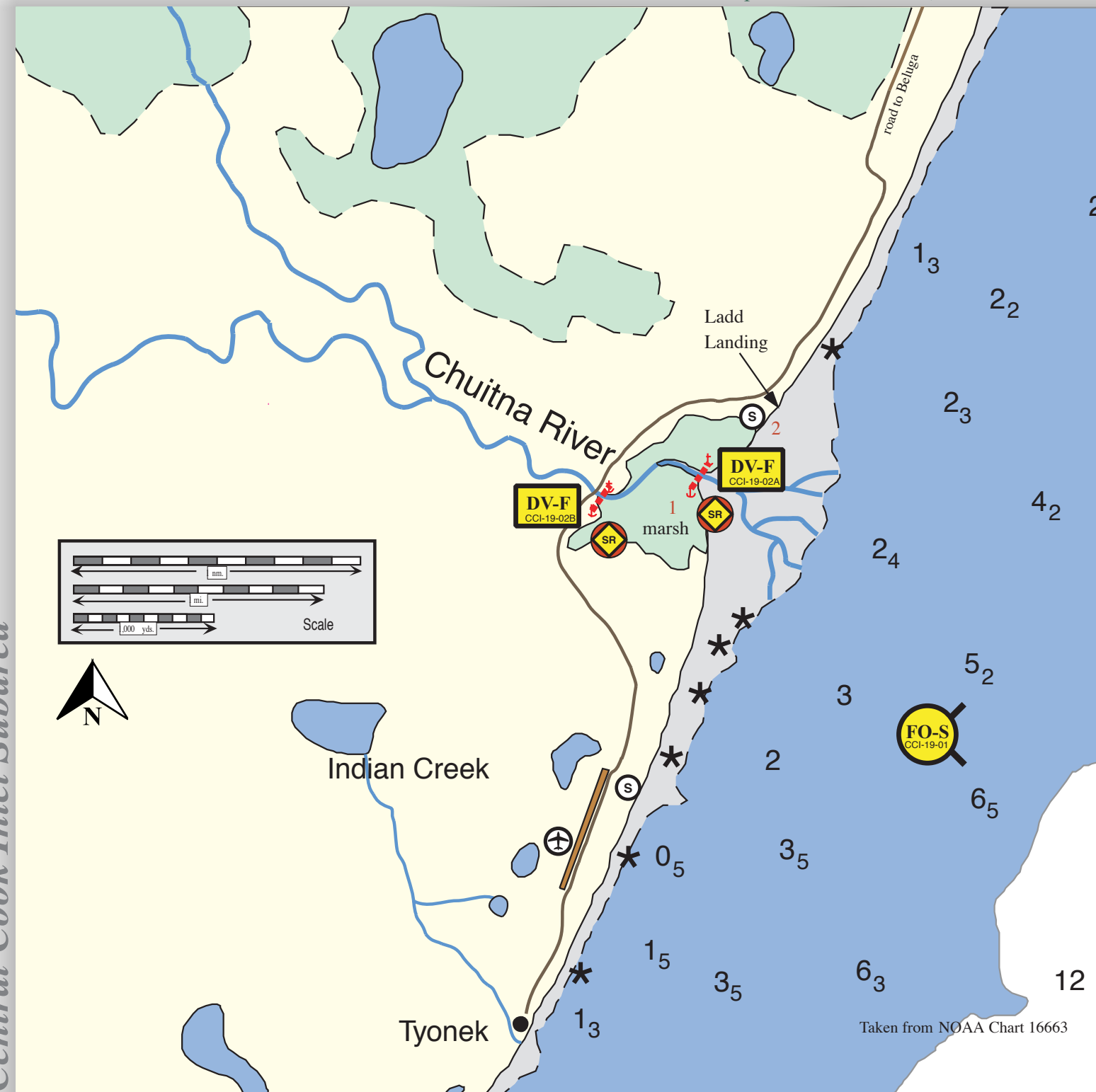
Implementation Notes:

- 1** - Shore-side recovery operations preferred on south shore.
- 2** - Storage and disposal preferred on north shore.

Chuitna River, CCI-19

Center of map at 60° 55.5' N Lat., 152° 44.9' W Lon.

Geographic Response Strategies for Central Cook Inlet Subarea



This map is not intended to be used for navigation.

Soundings in fathoms

ID	Location and Description	Response Strategy	Implementation	Response Resources	Staging Area	Site Access	Resources Protected (months)	Special Considerations
CCI-19-01	Chuitna River Nearshore waters in the general area of: Lat. 60° 53.3 N Lon. 152° 39.8W	* Maximize on-water recovery in the offshore & nearshore environment / outside the mudflats.	Deploy nearshore strike teams upwind and up current of the river entrance. Use aerial surveillance to locate incoming oil.	Multiple nearshore free-oil recovery strike teams as required to maximize interception of oil before it impacts sensitive areas.	<ul style="list-style-type: none">• Tyonek dock or offshore support vessel• Ladd Landing during summer.	Via marine waters See NOAA Chart 16663-1.	Same as CCI-19-02.	<ul style="list-style-type: none">• Emphasis on offshore and nearshore efforts to keep product off of tidal areas since it would be virtually impossible to protect exposed tidal flats and habitat outside of the river entrance• Shoal waters and rocks. Vessel masters should have local knowledge.
CCI-19-02	Chuitna River 3 mi. north of North-Forelands and 1.8 mi. north of Tyonek on the west side of Cook Inlet. River is marked by a low break in the bluff. Features include marsh habitat near the river entrance, mixed sand and gravel beaches and mudflats that extend outward to the inlet up to half a mi. at low water. 02 A Lat. 60° 55.53 N Lon. 152° 44.86W 02 B Lat. 60° 56.08 N Lon. 152° 44.53W River Channel <ul style="list-style-type: none">• Average depth of 8 ft. at mouth of river at high water.• Not navigable at low tide.• Moderate currents.• Narrow and winding.• Tidally influenced to about 1 mi. upriver.• River width at designated collection sites - approximately 100 ft.	* Divert spilled product to designated collection sites. *Recover spilled product at designated collection sites. * Trained crews should haze birds out of river mouth and adjacent marsh areas, once a hazing permit is issued. Seasonal Restriction River iced-in/not navigable from approximately November to April. However, road between Tyonek and Beluga, including ice bridge, is maintained through winter.	02A Place 200 ft. of diversion boom to divert spilled product to south shore collection site. 02B Place another 200 ft. of diversion boom in a cascade configuration to divert spilled product to south shore collection site further upstream. Collect product with shoreside collection units. Note: Recovery preferred from south shore. Storage & disposal preferred from north shore.	Equipment 2 ea. 200 ft. river boom units 2 ea. protected water skimmer 600 ft. 2” discharge hose 2 ea. on-shore storage units 6 ea. 40 lb. anchor systems 1 ea. additional transfer pump 1 ea. wildlife hazing kit 800 ft. line Support 2 ea. Class #4/5/6 vessel 1 ea. truck 1 ea. truck with trailer 1 ea. vacuum truck 1 ea. shelter. 2 ea. ATV trailers 2 ea. ATVs 10 ea. fence posts 1 or 2 light plants Personnel/Shift 10 ea. deploy & set-up 8 ea. tend & maintain	North shore: <ul style="list-style-type: none">• Ladd Landing - summer during, marine access.• Beluga airstrip with year round road access from Beluga to site.• Services - (heavy industrial area) - Chugach Electric, Beluga Village, Veco, gas industry infrastructure, and Tyonek Village• Security - none/minimal• Support - shelter. South shore: <ul style="list-style-type: none">• Tyonek airstrip with year round road access from Tyonek to site.• Services - same as above• Security - none/minimal• Support - shelter	FOSC Historic Properties Specialist should INSPECT site prior to operations. FOSC Historic Properties Title 16 permit may be required to work inside river. Contact Environmental Unit of the Unified Command for permit. Mobilization options include airlift to either Beluga or Tyonek, or marine transport which is restricted from November - April. Marine access with shallow draft vessels (May - September). Road access year round from Beluga or Tyonek via ATV or off road equipment. Barge landing at (Ladd Landing) located north side of river mouth. Seasonal Restriction River iced-in/not navigable from approximately November - April.	<ul style="list-style-type: none">• Tidal marshes (all year)• Salmon migration and spawning (May - October)• Intertidal salmon spawning (July - September)• Waterfowl and shore bird concentrations (all year.)• Subsistence fishing (July - September)	<ul style="list-style-type: none">• Brown bears present in summer months.• Very difficult and unsafe to protect exposed tidal flats outside river mouth.• Working on banks of the river should be no problem. Take care not to work or walk on oiled shoreline, to avoid driving oil into the soils.• Access above intertidal area will have to be resolved with landowners before setting anchors or staging areas.• Potential pipe hazard east side of river entrance that can be covered by about 2 ft. at mean higher high water (reported 1996).