








Swanson River, CCI-22-01 as viewed from the Northwest.

Map & Photo Legend

-  Free-oil Containment and Recovery, Shallow Water – Located up current and up-wind to maximize recovery.
-  Exclusion Booming
-  Protected-water Boom
-  Marine Recovery
-  Staging Area

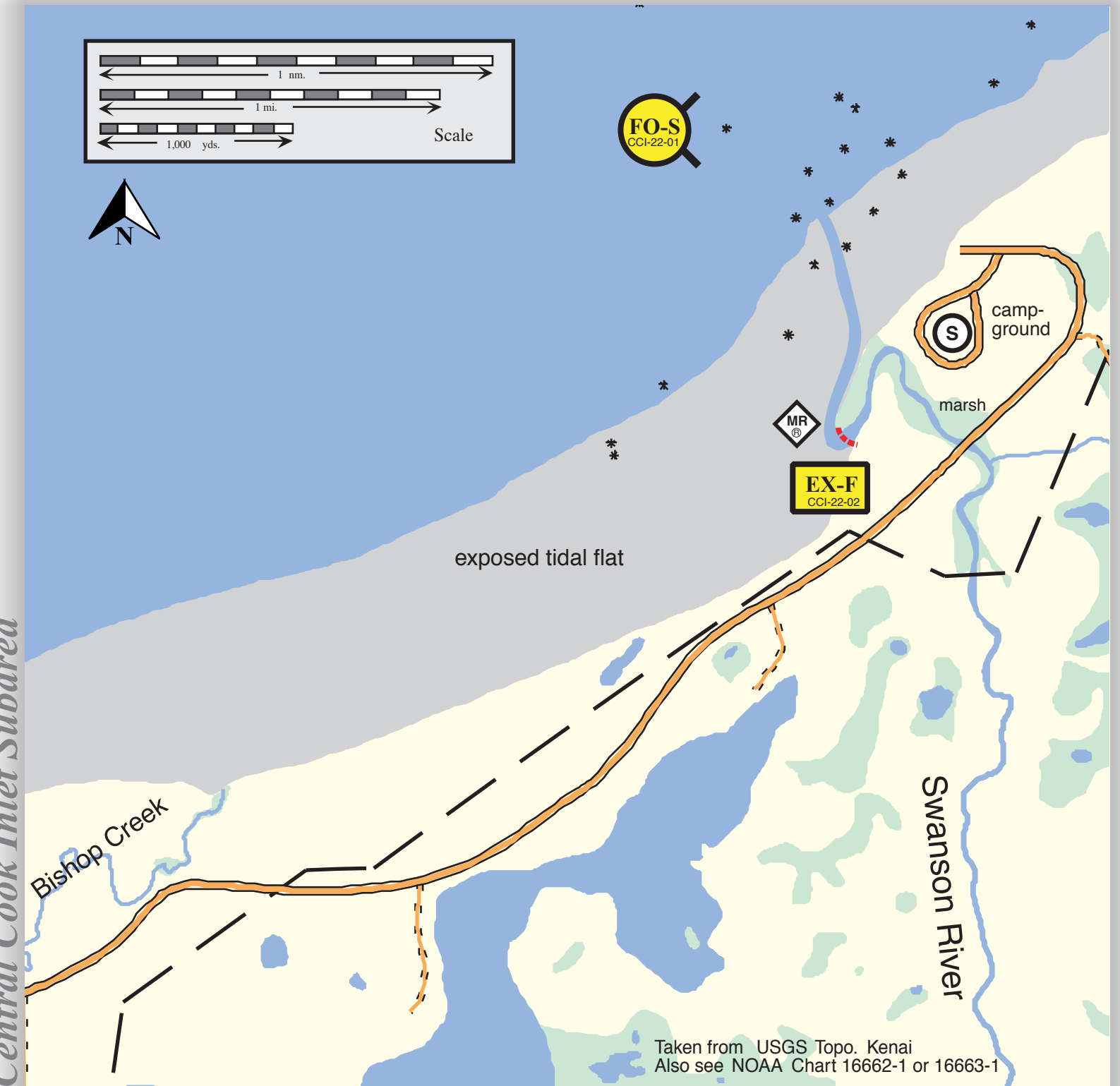
Implementation Notes:

Staging at north shore campground.

Swanson River, CCI-22

Center of map at 60° 48.79' N Lat., 151° 02.98' W Lon.

Geographic Response Strategies for Central Cook Inlet Subarea



This map is not intended to be used for navigation.

Soundings in fathoms

Taken from USGS Topo. Kenai
Also see NOAA Chart 16662-1 or 16663-1

ID	Location and Description	Response Strategy	Implementation	Response Resources	Staging Area	Site Access	Resources Protected (months)	Special Considerations
CCI-22-01	Swanson River Nearshore waters in the general area of: Lat. 60° 48.79 N Lon. 151° 02.98W	* Maximize on-water recovery in the offshore & nearshore environment / outside the mudflats.	Deploy nearshore strike teams upwind and up current of the river entrance. Use aerial surveillance to locate incoming oil.	Multiple nearshore free-oil recovery strike teams as required to maximize interception of oil before it impacts sensitive areas.	• Kenai Harbor or offshore support vessel.	Via marine waters. See NOAA Charts 16662-1 or 16663-1.	Same as CCI-22-02.	• Emphasis on offshore and nearshore efforts to keep product off of tidal areas since it would be virtually impossible to protect exposed tidal flats and habitat outside of the creek entrance. • Shoal waters, large boulders and rocks. Vessel masters must have local knowledge.
CCI-22-02	Swanson River - Primary Located in Captain Cook State Recreation Area, NE of Boulder Point near Number Three Bay, on the east side of Cook Inlet. Features include coarse grain sand beaches with exposed tidal flats that can extend up to 2 mi. offshore and marsh habitat along river upstream. Lat. 60° 48.03 N Lon. 151° 01.40 W River Channel <ul style="list-style-type: none">• Average depth at entrance 3-4 ft. at low water.• Well defined channel entrance.• Moderate currents (less than 0.5 KTS).• River is approximately 75 ft. across at entrance. Docks <ul style="list-style-type: none">• None.	* Exclude oil from river entrance. *Recover spilled product outside of exclusion boom. Seasonal Restriction River iced-in/not navigable and shoreline is typically armored with ice from approximately November - April.	Place 200 ft. of diversion boom to divert spilled product to north shore collection site. Collect product with onshore collection unit. Use Vac Trucks to recover fluids using beach access at Captain Cook Park. Tides must be below 9.0 ft. (Nikiski) for safe truck, loader, or ATV access. Currents usually less than 0.5 KTS. Tide change occurs at approximate +15 ft. on Nikiski tides.	Equipment 1 ea. 200 ft. river boom units 1 ea. marine skimming system 4 ea. 40 lb. anchor systems or 8 metal fence posts 1 ea. marine storage unit 1 ea. Small (12”) work pant 500 ft. line 1 ea. wildlife hazing kit Support Trucks with trailers (or) ATV’s with trailers Hip waders for personnel Astro Turf for river bank protection (8x60’ section) Personnel/Shift 6 ea. deploy & set-up 3 ea. tend & maintain	• Captain Cook Park from access road off of Kenai Spur Highway. Campground for both equipment and comms. • Elevated clearing near deployment site for oil storage tanks. • Services - none. • Security - none. • Support - shelter.	FOSC Historic Properties Specialist should INSPECT site prior to operations. FOSC Historic Properties Title 16 permit may be required to work inside river. Contact Environmental Unit of the Unified Command for permit. Marine access with shallow draft vessels (May - September). Road access from Kenai Spur Highway. Helicopter on beach or road. Seasonal Restriction River iced-in/not navigable from approximately November - April. Roads may not be maintained.	• Tidal marshes (all year) • Salmon migration and spawning (May - October) • Intertidal salmon spawning (July - September) • Waterfowl and shore bird concentrations (May - September) • Fishing (July - September) • Recreational use (June - September)	• Very difficult and unsafe to protect exposed tidal flats outside river mouth. • Working on banks of the river should be no problem. Use Astro Turf to reduce impacts. Take care not to work or walk on oiled shoreline, to avoid driving oil into the soils. • Access above intertidal area will have to be resolved with landowners before setting anchors or staging areas. Seasonal Summer response only. Possible winter access restrictions due to roads not being maintained. River ice-covered and shoreline is typically armored with ice from November - April.