

Map & Photo Legend



SWCI-12 North Head and South Head of Iliamna Bay looking northwest.



Free-oil Containment and Recovery, Shallow Water



Exclusion Booming



Deflection Booming



Protected-water Boom



Open-water Boom

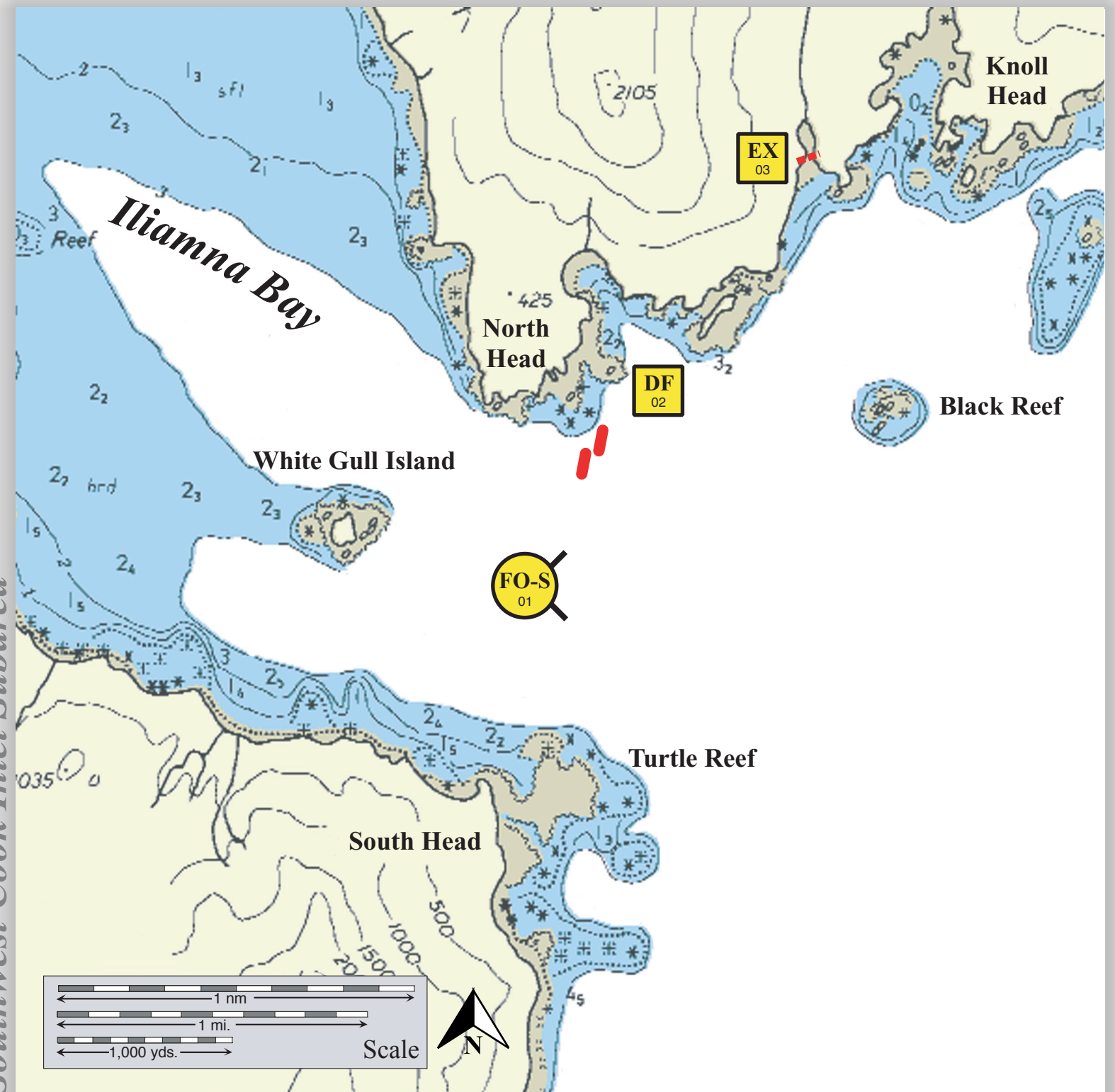


SWCI-12-02 North Head of Iliamna Bay deflection deployment site looking northwest.

Geographic Response Strategies for Southwest Cook Inlet Subarea

North/South Heads of Iliamna Bay, SWCI-12

Center of map at 59° 36.39' N Lat., 153° 33.54' W Lon.



This is not intended for navigational use.

Soundings in fathoms

ID	Location and Description	Response Strategy	Implementation	Response Resources	Staging Area	Site Access	Resources Protected (months)	Special Considerations
SWCI-12-01	North Head-South Head of Iliamna Bay Nearshore waters in the general area of: Lat. 59° 36.39 N Lon. 153° 33.54 W	Free-oil Recovery Maximize free-oil recovery in the offshore & nearshore environment of North Head-South Head of Iliamna Bay depending on spill location and trajectory.	Deploy free-oil recovery strike teams upwind and up current of North Head-South Head. Use aerial surveillance to locate incoming slicks.	Deploy multiple free-oil recovery strike teams as required to maximize interception of oil before it impacts sensitive areas.	Homer/Kenai	Via marine waters Chart 16648-1	Same as SWCI-12-02	Vessel master should have local knowledge. Use extreme caution, shoal waters with numerous reefs and rocks.
SWCI-12-02	North Head Lat. 59° 37.12 N Lon. 153° 33.22 W	Deflection Deflect oil away from the North Head into the channel for collection.	Transport equipment to site by marine vessel (class 2/3/4). Deploy boom and anchor system with fishing vessels or skiff (class 3/4/6). Position boom in two arrays at proper angle to deflect oil to free-oil recovery.	Deployment Equipment 1200 ft. protected-water boom 8 ea. anchor systems (~100 lbs.) Vessels 2 ea. class 3/4 1 ea. class 6 Personnel/Shift 8 ea. vessel crew Tending Vessels 1 ea. class 3/4 1 ea. class 6 Personnel/Shift 5 ea. vessel crew	Vessel platform Nearest anchorage is in Iliamna Bay. Nearest shelter is at Williamsport.	Via marine waters Chart 16648-1	Fish- intertidal spawning- herring (April-May) Birds-waterfowl/seabird nesting (April-August), shorebird concentration (April-Sept.) Habitat-sheltered tidal flats, sheltered rocky shoreline Marine mammals-seals	Vessel master should have local knowledge. Site surveyed: 09/09/03 SWCI GRS Tactics Committee Tested: not yet
SWCI-12-03	Knoll Head Stream Lat. 59° 38.02 N Lon. 153° 31.84 W	Exclusion Exclude oil from entering the river near Knoll Head.	Transport equipment to site by marine vessel (class 2/3/4). Deploy boom and anchor system with fishing vessels or skiff (class 3/4/6). Tend throughout tide.	Deployment Equipment 200 ft. open-water boom 4 ea. anchor stakes Vessels/Personnel/Tending Same as SWCI-12-02	Same as SWCI-12-02	Same as SWCI-12-02	Same as SWCI-12-02	Same as SWCI-12-02