



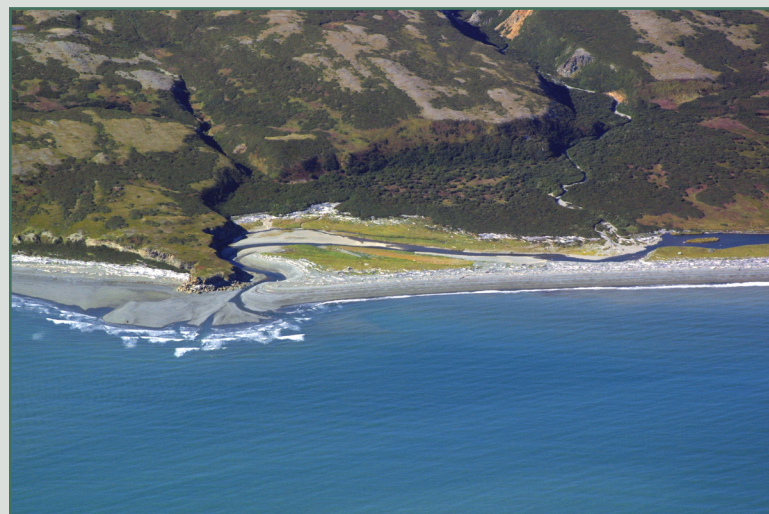


Map & Photo Legend



SWCI-18 Amakdedori Creek looking west.

-  Free-oil Containment and Recovery, Shallow Water
-  Diversion Booming
-  Calm-water Boom
-  Shoreside Recovery



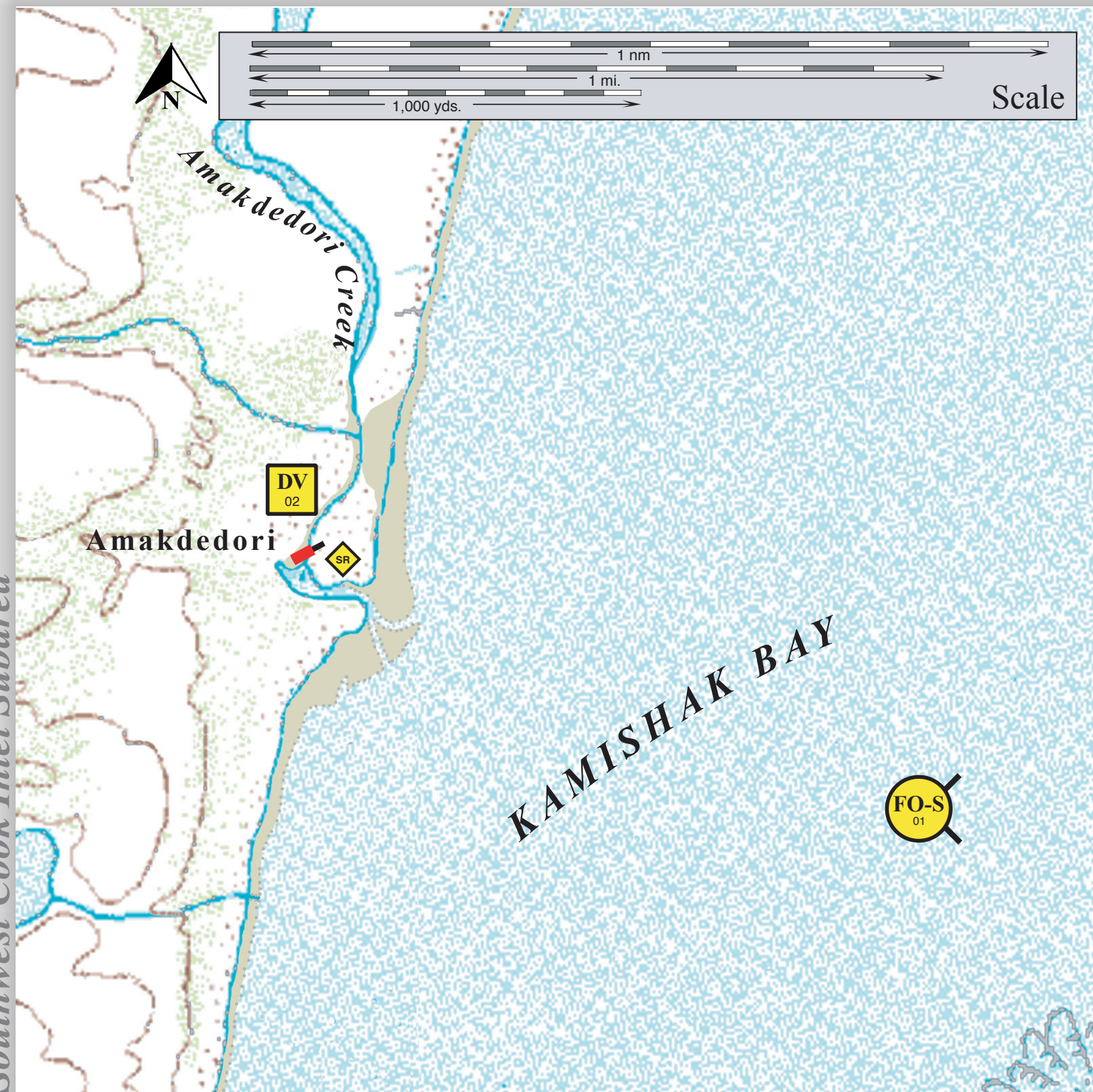
SWCI-18-02 Amakdedori Creek looking west.

Geographic Response Strategies for

Southwest Cook Inlet Subarea

Amakdedori Creek, SWCI-18

Center of map at 59° 16.6' N Lat., 154° 07.5' W Lon.



This is not intended for navigational use.

Soundings in fathoms

ID	Location and Description	Response Strategy	Implementation	Response Resources	Staging Area	Site Access	Resources Protected (months)	Special Considerations
SWCI-18-01	Amakdedori Creek Nearshore waters in the general area of: Lat. 59° 16.55 N Lon. 154°07.08 W	Free-oil Recovery Maximize free-oil recovery in the offshore & nearshore environment of Amakdedori Creek depending on spill location and trajectory.	Deploy free-oil recovery strike teams upwind and up current of Amakdedori Creek. Use aerial surveillance to locate incoming slicks.	Deploy multiple free-oil recovery strike teams as required to maximize interception of oil before it impacts sensitive areas.	Homer	Via marine waters Chart 16648-1	Same as SWCI-18-02	Vessel master should have local knowledge. Use extreme caution, shoal waters with numerous reefs and rocks.
SWCI-18-02	Amakdedori Creek Lat. 59° 16.73 N Lon. 154°07.83 W	Divert and Collect Divert oil to shore-side collection points determined by spill source and trajectory.	Transport equipment by vessel (class 2/3) or helicopter from Kenai/Homer. Deploy anchors and boom with inflatable boat. Place calm-water boom at the proper angle to divert oil to collection site. Set up collection unit and tend throughout the flood tide.	Deployment Equipment 200 ft. calm-water boom 1 ea. anchor systems (~20 lbs.) 4 ea. anchor stakes 1 ea. shore-side collection unit Vessels 1 ea. class 3/4 1 ea. class 6 or Helicopter 1 ea. inflatable boat Personnel/Shift 5 ea. vessel crew (marine deployment) 2 ea. response techs Tending Vessels 1 ea. class 3/4 1 ea. class 6 or 1 ea. inflatable boat Personnel/Shift 4 ea. vessel crew (marine deployment) 2 ea. response techs	Vessel platform Nearest shelter is at McNeil Cove. Nearest anchorage is at Nordyke Island.	Via marine waters/helicopter Chart 16648-1	Fish-intertidal spawning-salmon Birds- shorebird feeding, waterfowl- murrelets Habitat-exposed tidal flats, marsh	Take appropriate measures as outlined in Part 2 of this document to protect the beach at the collection site. Responders should be provided with camping equipment and food, in case they get stranded on shore. Title 41 permit required by ADNR. Site aerial surveyed: 9/17/03 Tested: not yet