

Map & Photo Legend



SWCI-09 Augustine Island-west looking south.



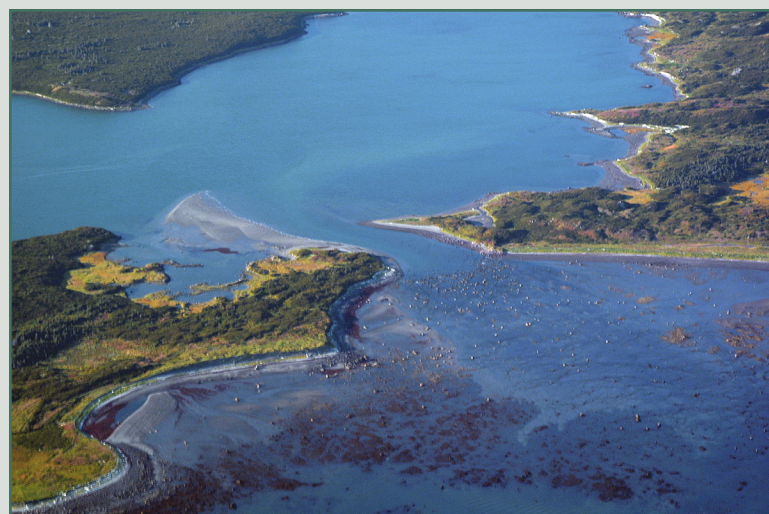
Free-oil Containment and Recovery, Shallow Water



Exclusion Booming



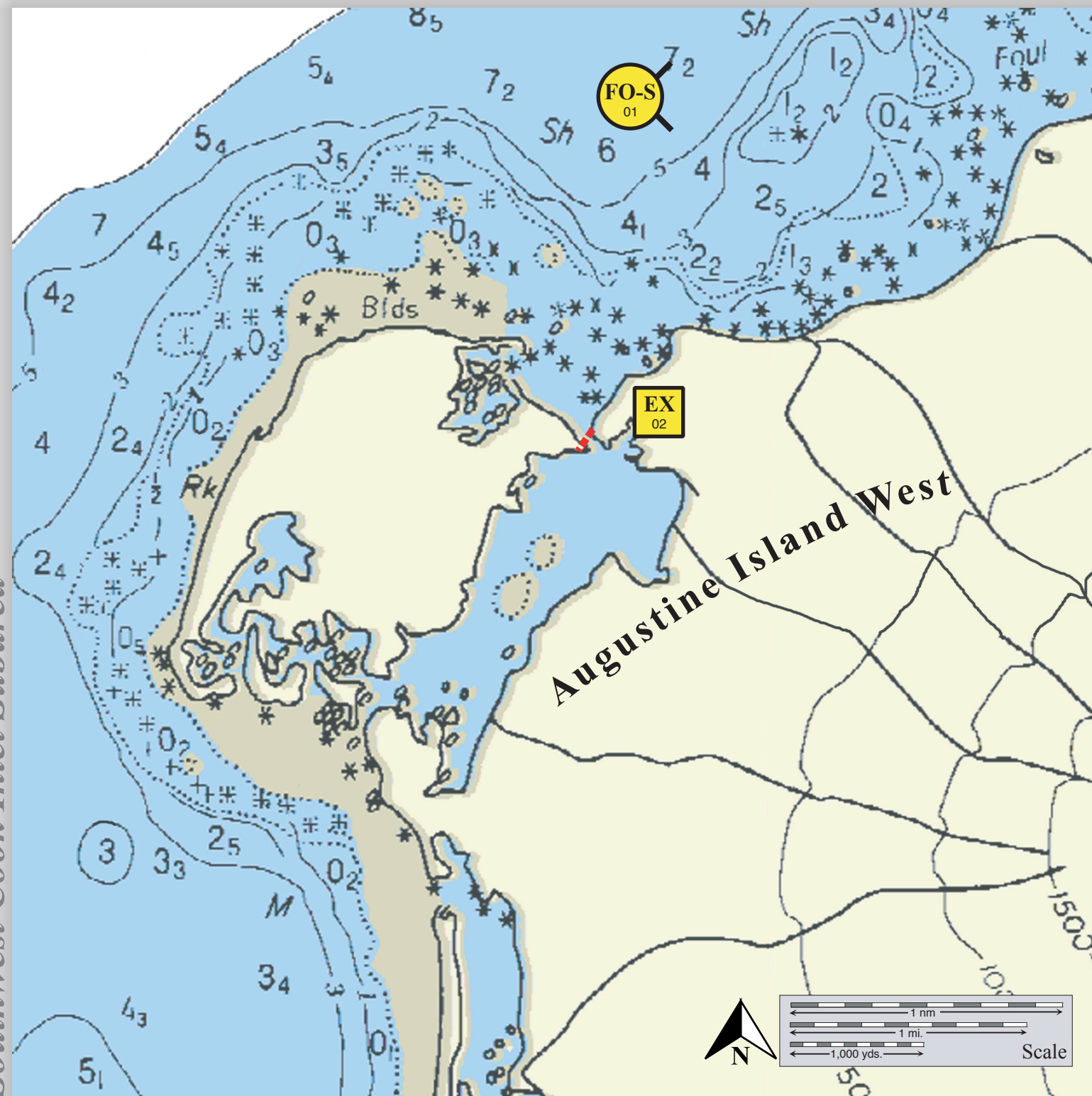
Protected-water Boom



SWCI-09 Northern entrance to the lagoon on western Augustine Island looking south.

Augustine Island-West, SWCI-09

Center of map at 59° 23.6' N Lat., 153° 31.5' W Lon.



This is not intended for navigational use.

Soundings in fathoms

Geographic Response Strategies for

Southwest Cook Inlet Subarea

ID	Location and Description	Response Strategy	Implementation	Response Resources	Staging Area	Site Access	Resources Protected (months)	Special Considerations
SWCI-09-01	Augustine Island-West Nearshore waters in the general area of: Lat. 59° 23.6 N Lon. 153° 31.5 W	Free-oil Recovery Maximize free-oil recovery in the offshore & nearshore environment of Augustine Island-West depending on spill location and trajectory.	Deploy free-oil recovery strike teams upwind and up current of Augustine Island-West. Use aerial surveillance to locate incoming slicks.	Deploy multiple free-oil recovery strike teams as required to maximize interception of oil before it impacts sensitive areas.	Homer/Kenai	Via marine waters Chart 16648-1	Same as SWCI-09-02	Vessel master should have local knowledge. Use extreme caution, shoal waters with numerous reefs and rocks. Do not attempt to enter lagoon by boat.
SWCI-09-02	Augustine Island-West Lat. 59° 23.18 N Lon. 153° 31.33 W	Exclusion Exclude oil from impacting the marsh and lagoon on the west side of Augustine Island.	Transport equipment by helicopter. Deploy anchors and boom with inflatable raft. Place protected-water boom at the proper angle to exclude oil from the lagoon. Tend throughout the tide.	Deployment Equipment 200 ft. protected-water boom 2 ea. anchor systems (~20 lbs.) 4 ea. anchor stakes Vessels 1 ea. inflatable raft Personnel/Shift 2 ea. vessel crew Tending Vessels 1 ea. inflatable raft Personnel/Shift 2 ea. vessel crew	Homer/Kenai Nearest anchorage is at Augustine Island. Nearest shelter is at Williamsport	Via helicopter Chart 16648-1	Fish-intertidal spawning-herring (April-May) Marine mammals-sea otter, seals Birds- shorebird concentrations (April-June), waterfowl (April-Nov.) Habitat-marsh, sheltered rocky shoreline	FOSC Historic Properties Specialist should INSPECT this site prior to deployment. Deploy site with helicopter only. If heavy oiling is expected, adapt tactic to divert oil to shoreside recovery. Free-oil recovery may be possible inside lagoon using inflatables delivered by air. Responders should be provided with camping equipment and food. Site surveyed: 09/08/03 SWCI GRS Tactics Committee Tested: not yet