

Map & Photo Legend









SECI-19 East Elizabeth Island stream/lagoon looking west.



SECI-19-02 and 03 East Elizabeth Island stream/lagoon looking west.



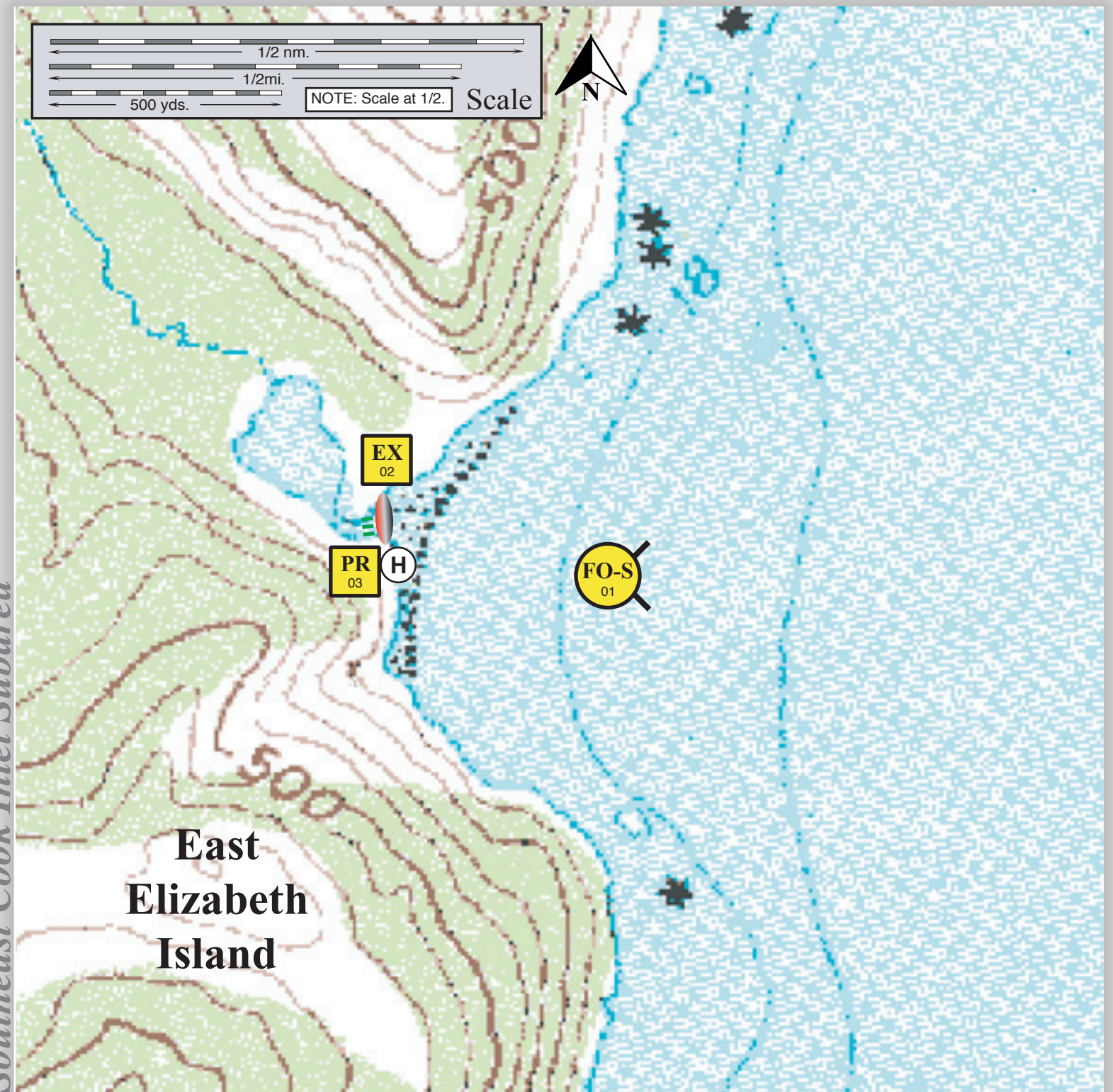
SECI-19 East Elizabeth Island stream/lagoon looking west.

-  Free-oil Containment and Recovery, Shallow Water
-  Exclusion Booming
-  Passive Recovery and Collection
-  Tidal-seal Boom
-  Snare/Sorbent Boom
-  Helicopter Landing

Geographic Response Strategies for Southeast Cook Inlet Subarea




East Elizabeth Island, SECI-19

Center of map at 59° 09.2' N Lat., 151° 47.9' W Lon.



This is not intended for navigational use.

Soundings in fathoms

ID	Location and Description	Response Strategy	Implementation	Response Resources	Staging Area	Site Access	Resources Protected (months)	Special Considerations
SECI-19-01 	East Elizabeth Island Nearshore waters in the general area of: Lat. 59° 09.1 N Lon. 151° 47.2 W	Free-oil Recovery Maximize free-oil recovery in the offshore & nearshore environment of East Elizabeth Island depending on spill location and trajectory.	Deploy free-oil recovery strike teams upwind and up current of East Elizabeth Island. Use aerial surveillance to locate incoming slicks.	Deploy multiple free-oil recovery strike teams as required to maximize interception of oil before it impacts sensitive areas.	Homer/Seward	Via marine waters Chart 16645-1	Same as SECI-19-02	Vessel master should have local knowledge. Use extreme caution, shoal waters with numerous reefs and rocks.
SECI-19-02 	East Elizabeth Island Lat. 59° 09.19 N Lon. 151° 48.01 W	Exclusion Exclude oil from impacting the identified streams and intertidal area in East Elizabeth Island.	Transport equipment by helicopter. Land on beach at low tide. Place tidal seal boom behind the storm berm. Tend daily at low tide.	Deployment Equipment 200ft. tidal-seal boom 3 ea. small anchor systems 4 ea. anchor stakes Vessels 1 ea. helicopter Personnel/Shift 2 ea. response techs Tending Vessels None Personnel/Shift 2 ea. response techs	Beach/Storm berm	Via helicopter at low tide Chart 16645-1	Fish- intertidal spawning- salmon (May-Sept.), dolly varden (May-Sept.) Birds-seabird nesting, eagle nesting Mammals- sea lions, seals, sea otters, river otters Habitat- sheltered rocky shoreline Human use-sport fishing	FOSC Historic properties specialist should INSPECT site prior to operations. Title 41 permit maybe required from ADNR. Site surveyed: 6/09/04 SECI GRS Tactics Committee. Tested: not yet
SECI-19-03 	East Elizabeth Island Lat. 59° 09.19 N Lon. 151° 48.03 W	Passive Recovery Place passive recovery across the stream behind the exclusion boom at East Elizabeth Island.	Transport equipment by helicopter. Land on beach at low tide. Place and anchor snare line or sorbent boom across the small stream at East Elizabeth Island. Replace as necessary to maximize the recovery.	Deployment Equipment 300 ft. snare line or sorbent boom 4 ea. anchor stakes Vessels/Personnel/Shift Same as SECI-19-02 Tending Vessels/Personnel/Shift Same as SECI-19-02	Beach/Storm berm	Via helicopter at low tide Chart 16645-1	Same as SECI-19-02	Use snare line for persistent oils and sorbent boom for non-persistent oils.