

# Map & Photo Legend



SECI-07 Sunday Harbor looking northeast.



Free-oil Containment and Recovery, Shallow Water



Exclusion Booming



Protected-water Boom



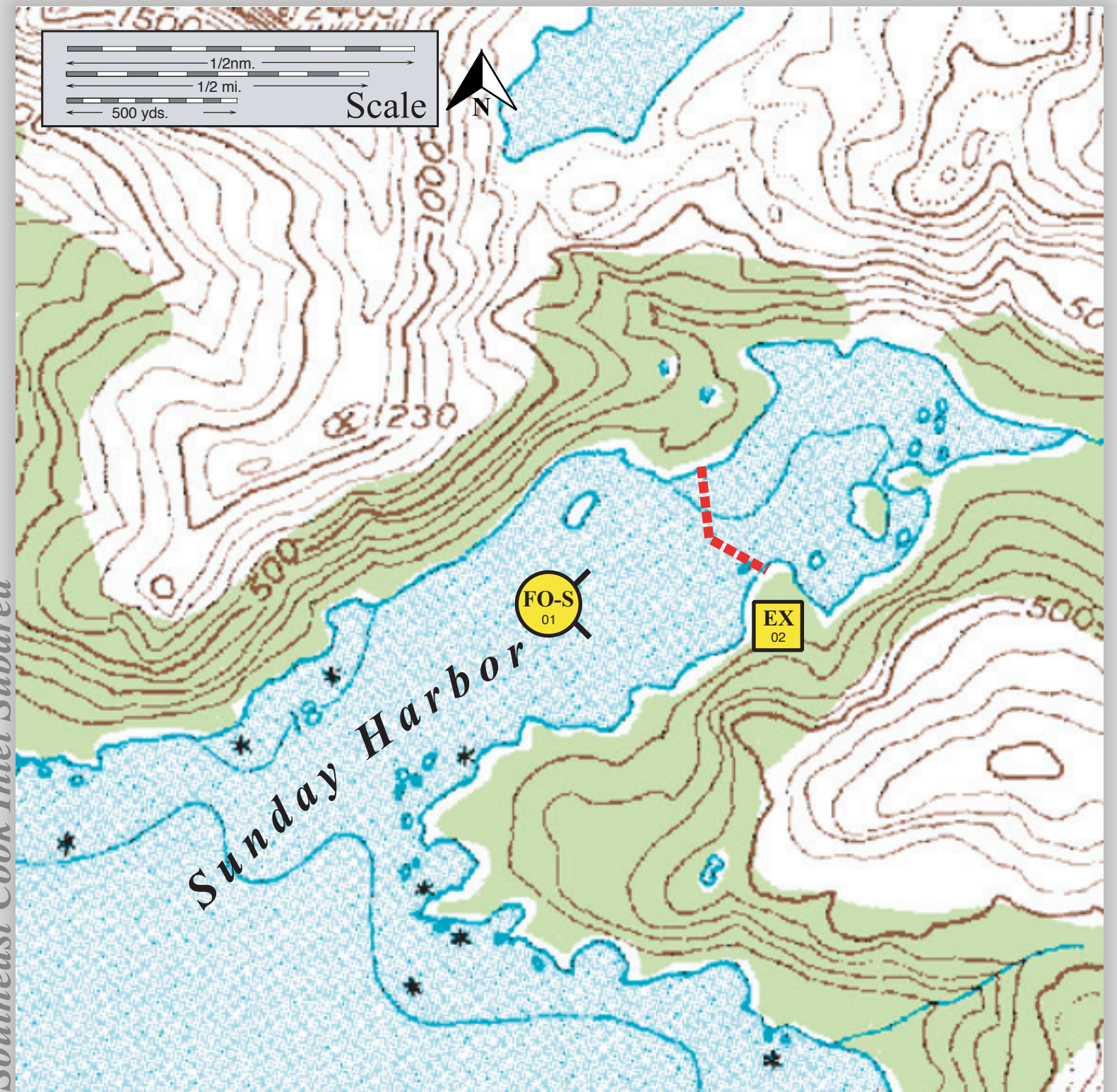
SECI-07 Sunday Harbor looking east.

## Geographic Response Strategies for

*Southeast Cook Inlet Subarea*

# *Sunday Harbor, SECI-07*



Center of map at 59° 16.38' N Lat., 150° 59.84' W Lon.



This is not intended for navigational use.

Soundings in fathoms



ID	Location and Description	Response Strategy	Implementation	Response Resources	Staging Area	Site Access	Resources Protected (months)	Special Considerations
SECI-07-01 	<b>Sunday Harbor</b> Nearshore waters in the general area of:  Lat. 59° 16.4 N Lon. 150° 59.4 W	<b>Free-oil Recovery</b> Maximize free-oil recovery in the offshore & nearshore environment of Sunday Harbor depending on spill location and trajectory.	Deploy free-oil recovery strike teams upwind and up current of Sunday Harbor.  Use aerial surveillance to locate incoming slicks.	Deploy multiple free-oil recovery strike teams as required to maximize interception of oil before it impacts sensitive areas.	Homer/Seward	Via marine waters  Chart 16645-1	Same as SECI-07-02	Vessel master should have local knowledge.  Use extreme caution, shoal waters with numerous reefs and rocks.
SECI-07-02 	<b>Sunday Harbor</b> Anchor points  Lat. 59° 16.59 N Lon. 150° 59.18 W Lat. 59° 16.46 N Lon. 150° 59.04 W	<b>Exclusion</b> Exclude oil from impacting the identified stream and intertidal area in Sunday Harbor.	Use skiffs (class 6), place protected-water boom in a chevron pattern in front of the small islands to protect the intertidal area and stream.  Tend throughout the tide.	<b>Deployment</b> <b>Equipment</b> 1200 ft. protected-water boom 18 ea. small anchor systems 4 ea. anchor stakes <b>Vessels</b> 1 ea. class 3 1 ea. class 6 <b>Personnel/Shift</b> 5 ea. vessel crew <b>Tending</b> <b>Vessels</b> 1 ea. class 3 1 ea. class 6 <b>Personnel/Shift</b> 3 ea. vessel crew	Vessel platform	Via marine waters  Chart 16645-1	Fish- intertidal spawning-salmon (May-Sept.)  Birds-waterfowl concentration  Marine mammals- otters  Habitat- marsh, sheltered rocky shoreline	Vessel master should have local knowledge.  FOSC Historic properties specialist should INSPECT site prior to operations.  Title 41 permitting required from ADNR.  Site surveyed: 6/07/04 SECI GRS Tactics Committee.  Tested: not yet