

Map & Photo Legend



Day Harbor SZ-02, lagoon entrance, viewed from the south.

- | | | | |
|--|-----------------------------|--|-------------------------|
| | Nearshore Free-oil Recovery | | Tidal-seal Boom |
| | Exclusion Booming | | Shoreside Recovery |
| | Diversion Booming | | Possible Staging Area |
| | Protected-water Boom | | Helicopter Landing Site |

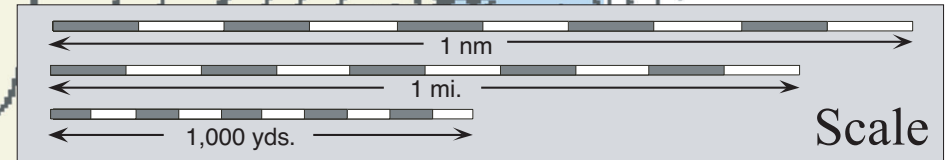
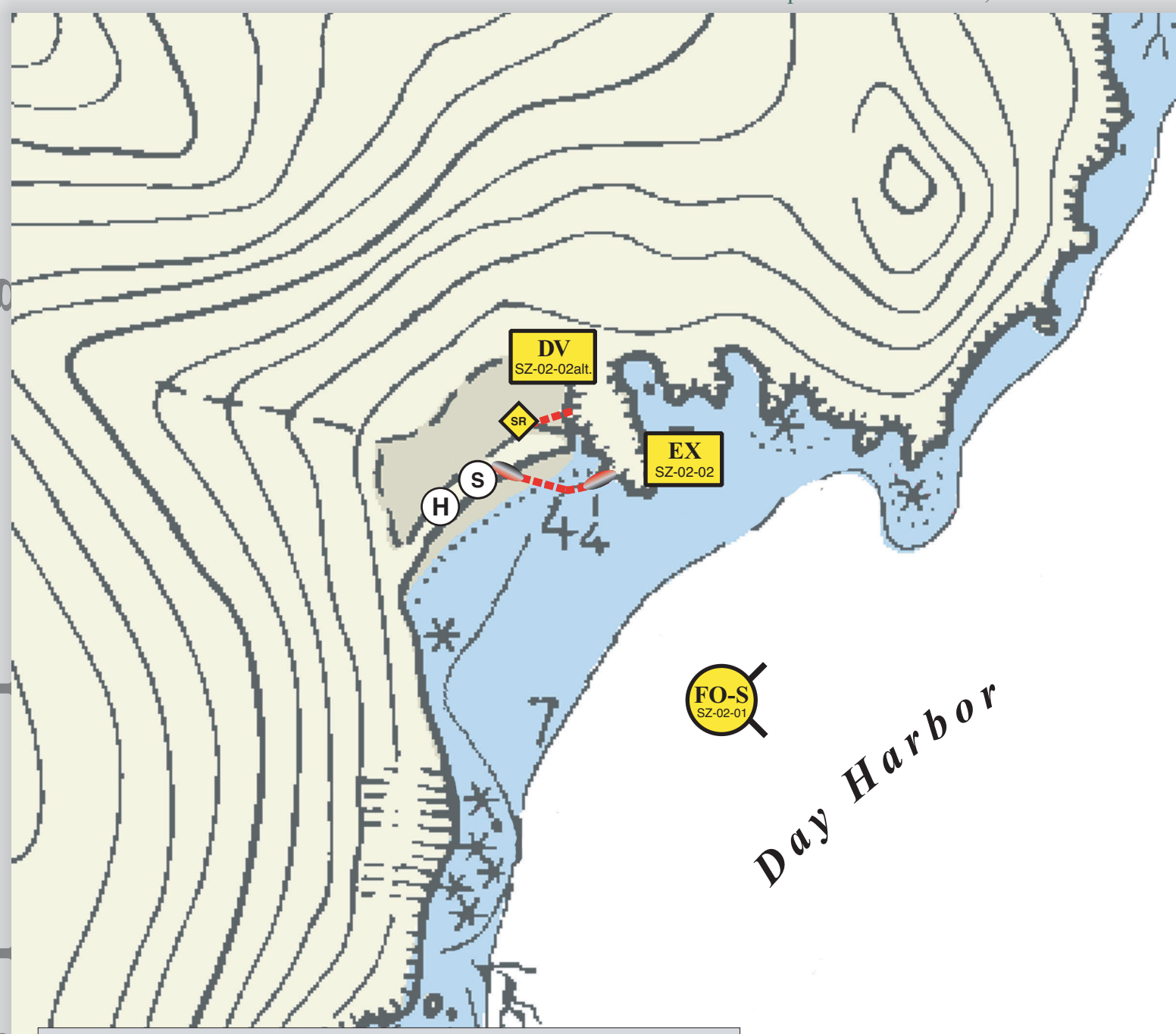


Day Harbor SZ-02, viewed from the south.

Day Harbor, SZ-02

Center of map at 60° 01.7' N Lat., 149° 09.6' W Lon.

Geographic Response Strategies for



This map is not intended to be used for navigation.

Soundings in fathoms

ID	Location and Description	Response Strategy	Implementation	Response Resources	Staging Area	Site Access	Resources Protected (months)	Special Considerations
SZ-02-01	Day Harbor Nearshore waters in the general area of: Lat. 60° 01.46 N Lon. 149° 09.16 W	Free-oil Recovery- Shallow Water Maximize free-oil recovery in the offshore & nearshore environment of Day Harbor depending on spill source and trajectory.	Deploy free-oil recovery strike teams upwind and up current of Day Harbor. Use aerial surveillance to locate incoming slicks.	Deploy multiple free-oil recovery strike teams as required to maximize interception of oil before it impacts sensitive areas.	Seward	Via marine waters Chart 16683-1	Same as SZ-02-02	Vessel master should have local knowledge. Area is a high-energy beach with numerous submerged features. Site surveyed: 9/09/02 GRS WG
SZ-02-02	Outside Lagoon Lat. 60° 01.33 N Lon. 149° 09.95 W	Exclusion Exclude oil from entering Day Harbor lagoon.	Transport equipment by vessel (class 2/3/4) from Seward. Deploy anchors and boom with skiffs and fishing vessels (class 3/4/6). Place protected water boom in an apex outside the lagoon mouth. East anchorage should be placed outside the surf and tended throughout tide cycle to maintain this position. West anchorage should attach to the rock bluff.	Deployment Equipment 800 ft. protected-water boom 4 ea. anchor systems (~20 lbs.) 1 ea. apex anchor (~200 lbs.) 3 ea. anchor stakes 1 ea. rock bolt Vessels 1 ea. class 3/4 2 ea. class 6 Personnel/Shift 5 ea. vessel crew Tending Vessels 1 ea. class 3/4 1 ea. class 6 Personnel/Shift 4 ea. vessel crew	Marine	Via marine waters Chart 16683-1	Fish-intertidal spawning, salmon, herring Birds-waterfowl concentrations, loons, shorebirds, eagle feeding Marine mammals-otters, seals Habitat-marsh, sheltered rocky shoreline Human use-commercial fishing, aquaculture, high recreational.	Vessel master should have local knowledge. Steep gravel beach. Lands are owned by Chugach National Forest-Seward Ranger District. REPORT any cultural resources found during operations to FOSC Historic Properties Specialist. Tested: not yet
SZ-02-03	Inside Lagoon Lat. 60° 01.92 N Lon. 149° 09.67 W	Divert and Collect If exclusion outside the lagoon is not feasible, divert oil to shoreside collection point inside the lagoon.	Transport equipment by helicopter from Seward. Deploy anchors and boom with inflatable skiff (class 6). Place tidal-seal boom across intertidal zone and calm-water boom at the proper angle to divert oil to collection site on the western shore of the lagoon. Set up collection unit and tend throughout tide. Outflow at the lagoon reverses at about +5ft. tide height. Tide levels below 5ft. will not result in oil entering the lagoon.	Deployment Equipment 500 ft. calm-water boom 2 sections ≥50 ft. tidal-seal boom 3 ea. anchor systems (~20 lbs.) 1 ea. portable shore-side collection unit Vessels 1 ea. inflatable raft Personnel/Shift 3 ea. response techs Tending Vessels 1 ea. inflatable raft Personnel/Shift 3 ea. response techs	Seward	Via marine waters, helicopter Title 16 permitting required from ADF&G. Private cabins are in the area. Response techs may have to camp at this site.	Same as SZ-02-02	Take appropriate measures as outlined in Part 2 to protect the beach at the collection site. This tactic will be used if conditions do not permit marine access to the site. Tested: not yet