

Map & Photo Legend



Free-oil Containment and Recovery, Shallow Water



Deflection Booming, Live



Protected-water Boom

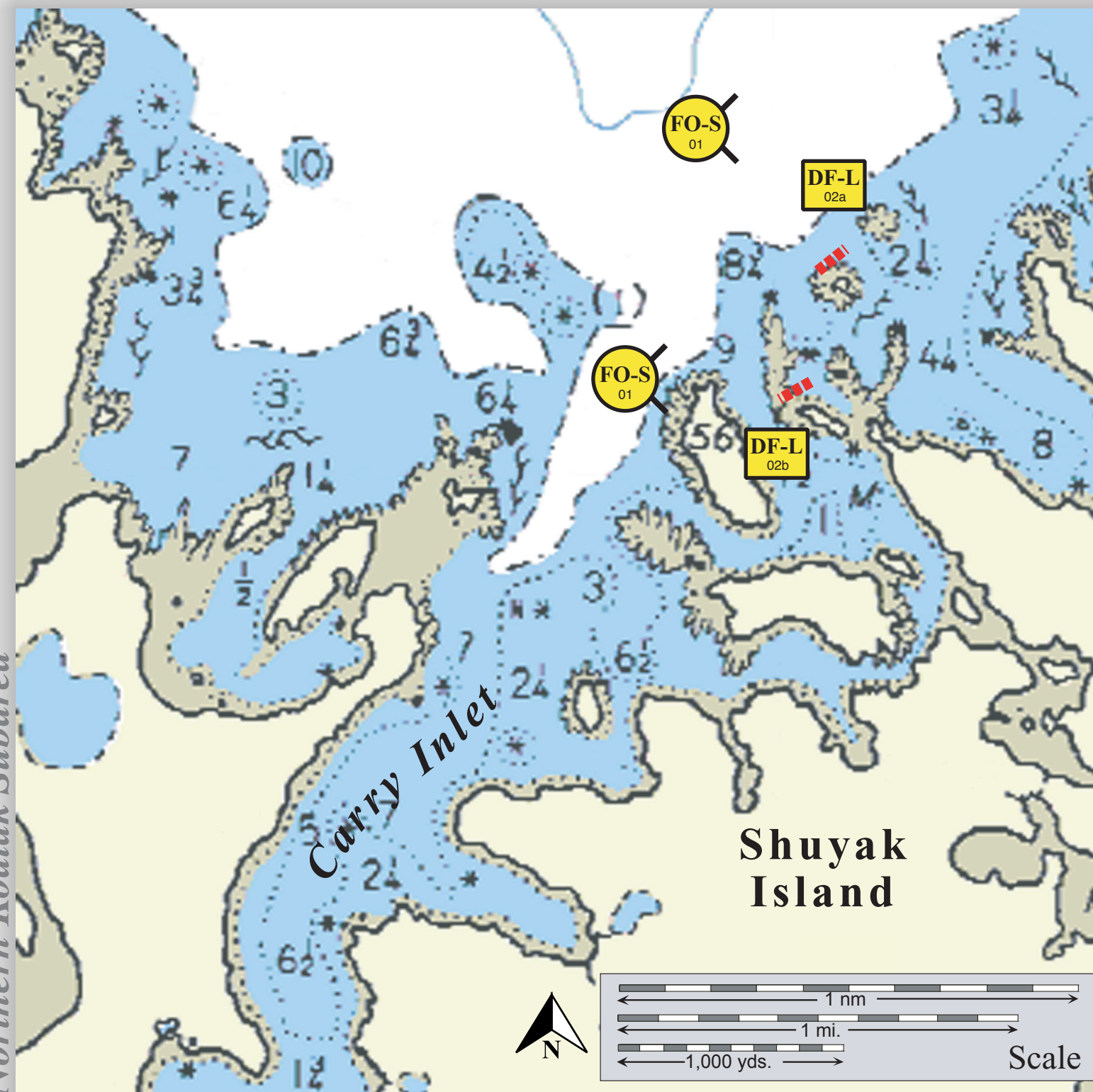


Carry Inlet-North DF-L-02a and DRF-L-02b viewed from the west.

Geographic Response Strategies for Northern Kodiak Subarea



Carry Inlet – North, K-42

Center of map at 58° 36.2' N Lat., 152° 30.8' W Lon.



This is not intended for navigational use.

Soundings in fathoms

ID	Location and Description	Response Strategy	Implementation	Response Resources	Staging Area	Site Access	Resources Protected (months)	Special Considerations
K-42-01 	Carry Inlet-North Nearshore waters in the general area of: Lat. 58° 36.9 N Lon. 152° 30.2 W	Free-oil Recovery Maximize free-oil recovery in the offshore & nearshore environment of Carry Inlet depending on spill location and trajectory.	Deploy free-oil recovery strike teams upwind and up current of Carry Inlet. Use aerial surveillance to locate incoming slicks.	Deploy multiple free-oil recovery strike teams as required to maximize interception of oil before it impacts sensitive areas.	Kodiak/Homer	Via marine waters Chart 16604-1	Same as K-42-02	Vessel masters should have local knowledge. Use extreme caution, shoal waters with numerous reefs and rocks.
K-42-02 	Carry Inlet-North a. Lat. 58° 36.64 N Lon. 152° 29.58 W b. Lat. 58° 36.36 N Lon. 152° 29.81 W	Deflection-Live Deflect oil coming from the northwest away from Carry Inlet islands and back into the channel for free-oil recovery. This tactic is to be deployed seasonally during seabird nesting (May-Aug.) and due to exposure is dependant on sea conditions.	Deploy boom and hold in place with fishing vessels(class 3). Position booms at a proper angle to deflect oil from small islands in Carry Inlet. Switch boom deflection angle with the tide and adjust to prevalent conditions.	Deployment Equipment 1000 ft. protected-water boom Vessels 4 ea. class 3 Personnel/Shift 12 ea. vessel crew Tending Vessels 4 ea. class 3 Personnel/Shift 12 ea. vessel crew	Vessel platform	Via marine waters Chart 16604-1	Fish- intertidal spawning-salmon (May-Sept.), herring (April-May) Birds-waterfowl concentration,seabird nesting, eagle nesting Marine mammals- seals, otters Human use- commercial fishing Habitat- marsh, sheltered rocky shoreline	Vessel masters should have local knowledge. This area is extremely exposed and this tactic should only be deployed in optimal conditions. Site surveyed: 7/23/05 K Tactics Committee. Tested: not yet