

Map & Photo Legend



Big Fort Island and Pass viewed from the northeast.

	Free-oil Containment and Recovery, Shallow Water
	Exclusion Booming
	Diversion Booming
	Protected-water Boom
	Tidal-seal Boom
	Marine Recovery
	Anchorage
	Bears in Area, Guards Recommended



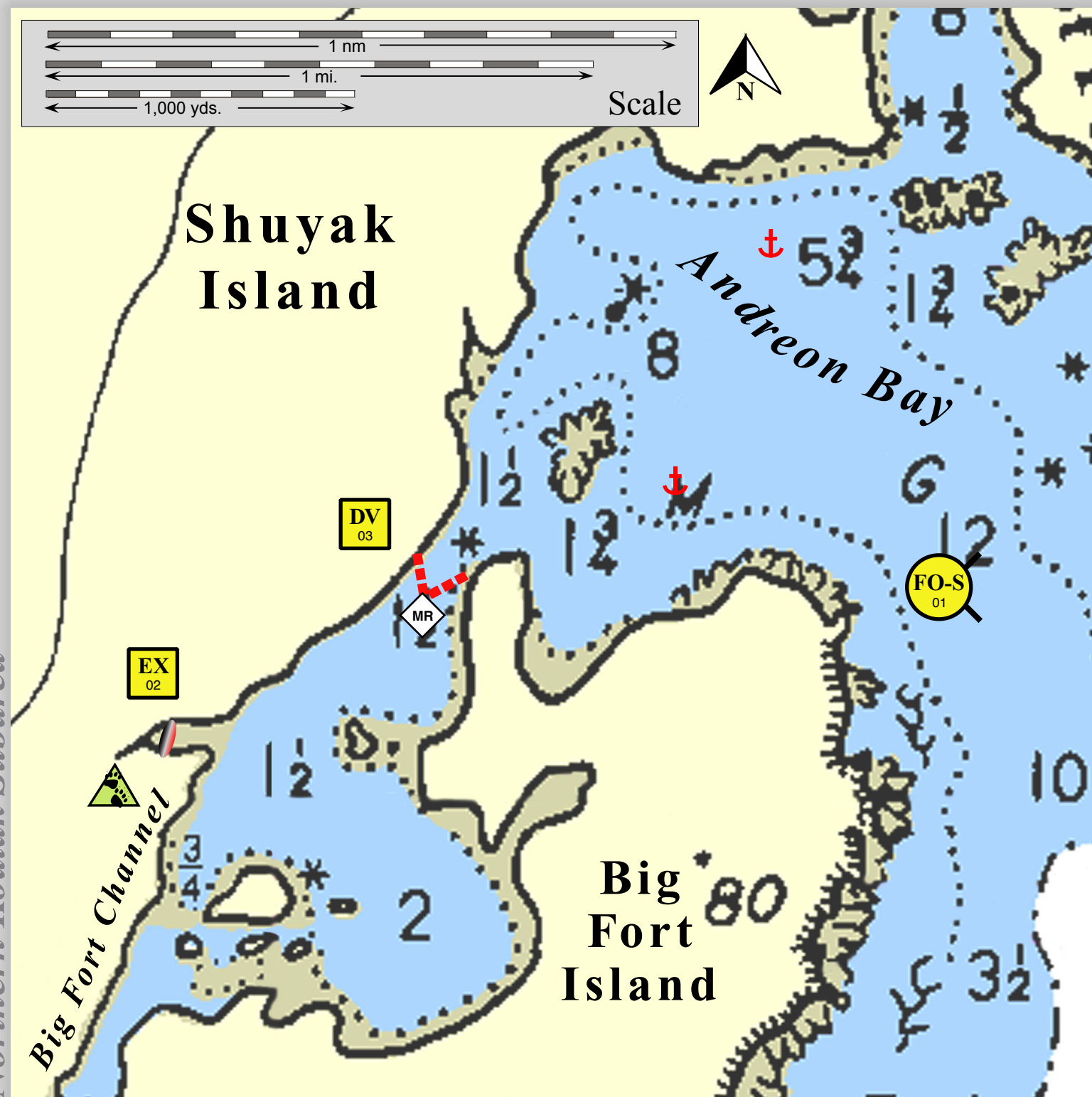
Salmon stream EX-02 in Fort Passage.

Geographic Response Strategies for

Northern Kodiak Subarea




Andreon Bay, K-45

Center of map at 58° 30.1' N Lat., 152° 23.9' W Lon.



This is not intended for navigational use.

Soundings in fathoms

ID	Location and Description	Response Strategy	Implementation	Response Resources	Staging Area	Site Access	Resources Protected (months)	Special Considerations
K-45-01 	Andreon Bay Nearshore waters in the general area of: Lat. 58° 29.9 N Lon. 152° 23.7 W	Free-oil Recovery Maximize free-oil recovery in the offshore & nearshore environment of Andreon Bay depending on spill location and trajectory.	Deploy free-oil recovery strike teams upwind and up current of Andreon Bay. Use aerial surveillance to locate incoming slicks.	Deploy multiple free-oil recovery strike teams as required to maximize interception of oil before it impacts sensitive areas.	Kodiak/Homer/ Kitoi Bay Hatchery	Via marine waters Chart 16604-1	Same as K-45-02	Vessel masters should have local knowledge. Use extreme caution, shoal waters with numerous reefs and rocks.
K-45-02 	Big Fort Island Channel Stream Lat. 58° 30.15 N Lon. 152° 26.20 W	Exclusion Exclude oil from impacting the identified stream and intertidal area in Andreon Bay.	Deploy anchors and boom with skiffs (class 6). Place tidal-seal boom across the small stream mouth. Tend throughout the tide.	Deployment Equipment 100ft. tidal-seal boom 1 ea. small anchor systems 4 ea. anchor stakes Vessels 1 ea. class 3 1 ea. class 6 Personnel/Shift 5 ea. vessel crew 2 ea. response techs Tending Vessels 1 ea. class 3/4 1 ea. class 6 Personnel/Shift 3 ea. vessel crew 2 ea. response techs	Vessel platform	Via marine waters Chart 16604-1	Fish- intertidal spawning-salmon (May-Sept.) Birds-waterfowl concentration, eagle nesting, seabird nesting Marine mammals- seals, otters Human use- subsistence Habitat- marsh, sheltered rocky shoreline	Vessel masters should have local knowledge. FOSC Historic properties specialist should INSPECT site prior to operations. Andreon Bay offers protected anchorage under N,NE,S,SE wind conditions. A limited bear population exists in the area; a bear guard may be necessary. Site surveyed: 7/23/05 KGRS Tactics Committee. Title 41 permitting required from ADNOR. Tested: not yet
K-45-03 	Big Fort Island Channel Lat. 58° 30.24 N Lon. 152° 25.58 W	Divert and Collect-Marine Recovery Divert oil to marine collection points determined by spill source and trajectory.	Deploy anchors and boom with skiffs (class 6). Place protected-water boom at proper angle to divert incoming oil to the marine collection site. Set-up collection using a marine collection unit. Tend throughout the tide.	Deployment Equipment 1000 ft. protected-water boom 5 ea. small anchor systems 8 ea. anchor stakes 1 ea. marine collection unit Vessels Same as K-45-02 Personnel/Shift 2 ea. response techs Tending Vessels Same as K-45-02 Personnel/Shift 2 ea. response techs	Vessel platform	Via marine waters Chart 16604-1	Same as K-45-02	Vessel masters should have local knowledge. Tested: not yet