

# Map & Photo Legend



Amalik Bay viewed from the east.



Free-oil Containment and Recovery, Shallow Water



USF&W Cabin



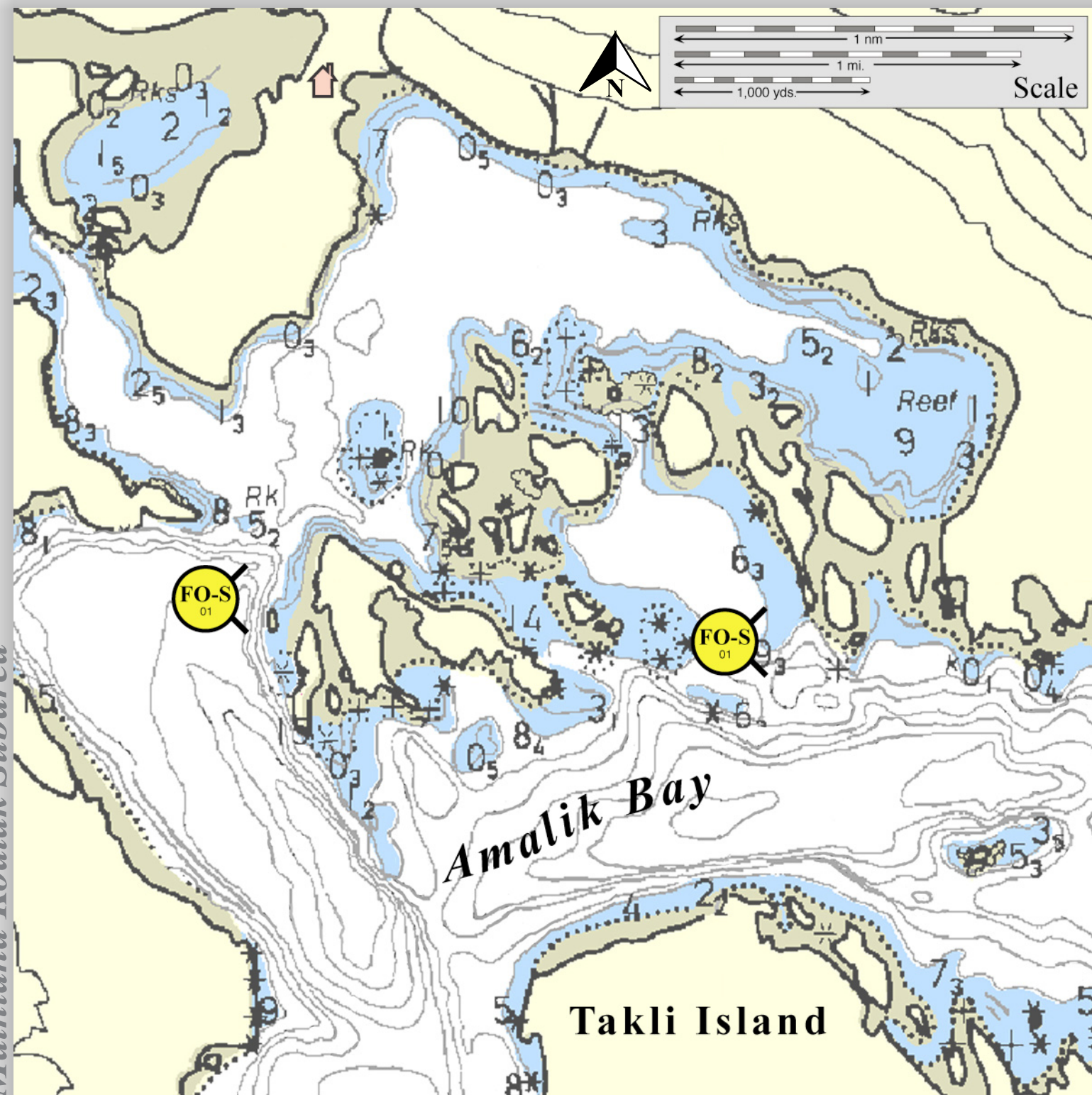
Amalik Bay viewed from the west.

## Geographic Response Strategies for

Mainland Kodiak Subarea


## Amalik Bay, K-58

Center of map at 58° 05.1' N Lat., 154° 31.2' W Lon.



This is not intended for navigational use.

Soundings in fathoms

ID	Location and Description	Response Strategy	Implementation	Response Resources	Staging Area	Site Access	Resources Protected (months)	Special Considerations
KGRS-58-01 <div></div>	<b>Amalik Bay</b> Nearshore waters in the general area of: a. Lat. 58° 04.9 N Lon. 154°29.6 W b. Lat. 58° 04.8 N Lon. 154°32.6 W	<b>Free-oil Recovery</b> Maximize free-oil recovery in the offshore & nearshore environment of Amalik Bay depending on spill location and trajectory.	Deploy free-oil recovery strike teams upwind and up current of the Amalik Bay.  Use aerial surveillance to locate incoming slicks.	Deploy multiple free-oil recovery strike teams as required to maximize interception of oil before it impacts sensitive areas.	Vessel Platform	Via marine waters  Chart 16576-1	Fish- intertidal spawning- salmon (May-Sept.), herring (April-May)  Birds-waterfowl concentration,eagle nesting, seabird nesting  Marine mammals- otters, seal, sea lions  Habitat- marsh, sheltered rocky shoreline.	Vessel master should have local knowledge.  Use extreme caution, shoal waters with numerous reefs and rocks.  USF&W maintains a small cabin in Amalik Bay.  Site surveyed: 7/10/06 KGRS Tactics Committee.