

# Map & Photo Legend







Takli Island viewed from the northeast.



Takli Island viewed from the south.



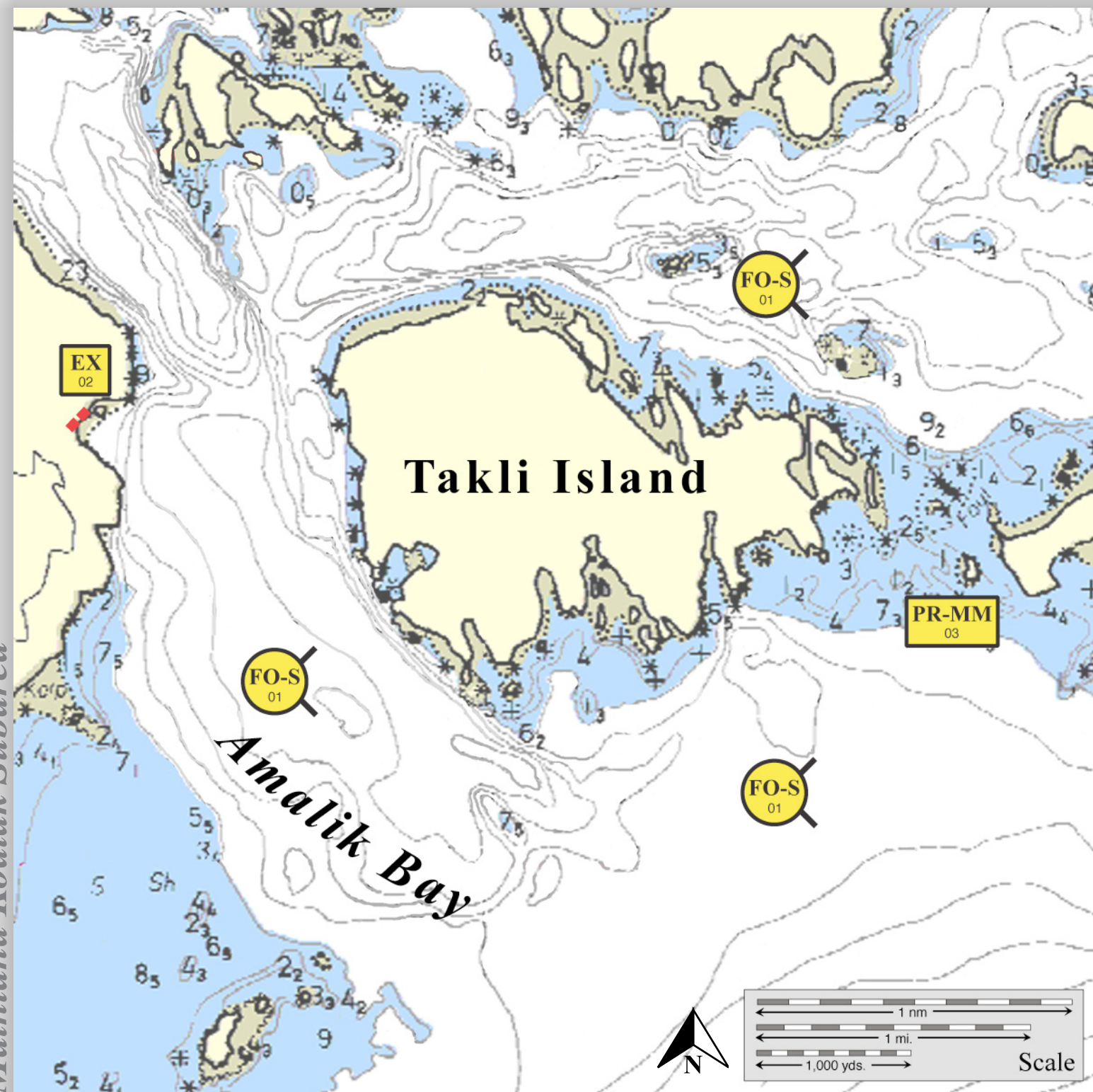
Takli Island viewed from the southwest.

-  Free-oil Containment and Recovery, Shallow Water
-  Exclusion Booming
-  Passive Recovery - Marine Mammal
-  Protected-water Boom

## Geographic Response Strategies for Mainland Kodiak Subarea

### Takli Island, K-59




Center of map at 58° 03.5' N Lat., 154° 29.6' W Lon.



This is not intended for navigational use.

Soundings in fathoms



ID	Location and Description	Response Strategy	Implementation	Response Resources	Staging Area	Site Access	Resources Protected (months)	Special Considerations
KGRS-59-01 	<b>Takli Island</b> Nearshore waters in the general area of:  Lat. 58° 02.7 N Lon. 154°28.7 W	<b>Free-oil Recovery</b>  Maximize free-oil recovery in the offshore & nearshore environment of Takli Island depending on spill location and trajectory.	Deploy free-oil recovery strike teams upwind and up current of Takli Island.  Use aerial surveillance to locate incoming slicks.	Deploy multiple free-oil recovery strike teams as required to maximize interception of oil before it impacts sensitive areas.	Vessel platform	Via marine waters  Chart 16596-1	Same as KGRS-59-02	Vessel master should have local knowledge.  Use extreme caution, shoal waters with numerous reefs and rocks.
KGRS-59-02 	<b>Takli Island Area</b> Lat. 58° 03.77 N Lon. 154°32.57 W	<b>Exclusion</b>  Exclude oil from impacting the identified stream across the channel from Takli Island.	Deploy anchors and boom with skiffs (class 6) at high tide.  Place protected-water boom across the small stream across from Takli Island on the mainland.  Tend throughout the tide.	<b>Deployment</b> <b>Equipment</b> 200 ft. protected-water boom 1 ea. small anchor systems 4 ea. anchor stakes <b>Vessels</b> 1 ea. class 3 1 ea. class 6 <b>Personnel/Shift</b> 5 ea. vessel crew/general techs <b>Tending</b> <b>Vessels</b> 1 ea. class 3/4 1 ea. class 6 <b>Personnel/Shift</b> 3 ea. vessel crew/general techs	Vessel platform	Via marine waters  Chart 16596-1	Fish- intertidal spawning- salmon (May-Sept.), herring (April-May)  Birds-Seabird nesting, waterfowl concentrations, eagle nesting  Marine mammals- seals, sea lions, otters  Human use- commercial fishing  Habitat- sheltered rocky shoreline	Vessel master should have local knowledge.  Title 41 - Fish Habitat Permit required from ADNR.  A large population of bears forage on the tidal flats in the spring and are present during salmon runs. A bear guard is required.  Site surveyed: 7/09/06 KGRS Tactics Committee.  Tested: not yet
KGRS-59-03 	<b>Takli Island Haul-out</b> Actual location of this protection strategy will depend on field assessment at the time of deployment.  Lat. 58° 03.28 N Lon. 154°26.89 W	<b>Passive Recovery-Marine Mammals</b>  Minimize impact to marine mammal haulouts after consulting with NMFS.	Broadcast sorbent material on haulout immediately prior to or after oil spill impact.  Monitor after each high tide and replace as necessary.  Minimize disturbance of marine mammals.	<b>Deployment</b> <b>Equipment</b> Broadcast sorbent material <b>Vessels</b> Same as KGRS-59-02 <b>Personnel/Shift</b> Same as KGRS-59-02 <b>Tending</b> <b>Vessels/Personnel/Shift</b> Same as KGRS-59-02	Vessel platform	Via marine waters  Chart 16596-1	Same as KGRS-59-02	Consult with the National Marine Fisheries Service prior to implementing this tactic.