

Map & Photo Legend



Little Narrows, Tactic 02d viewed from the north.



Free-oil Containment and Recovery, Shallow Water



Passive Recovery



Exclusion Booming



Protected-water Boom



Sorbent and Snare Boom



Bears in Area, Guards Recommended

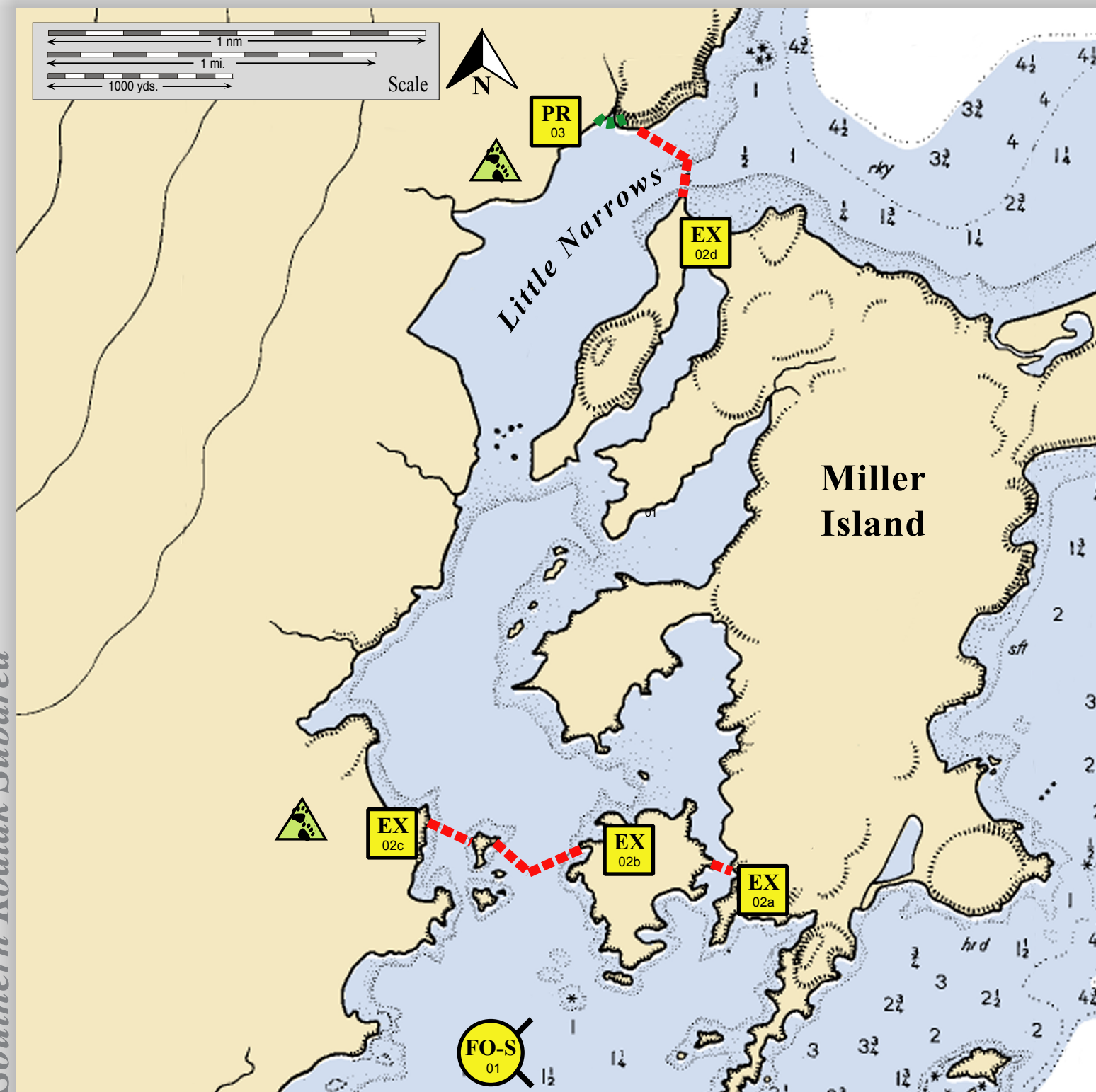


Little Narrows southern end viewed from the north.

Geographic Response Strategies for Southern Kodiak Subarea




Little Narrows, K-85

Center of map at 57° 57.2' N Lat., 154° 09.3' W Lon.



This is not intended for navigational use.

Soundings in fathoms

ID	Location and Description	Response Strategy	Implementation	Response Resources	Staging Area	Site Access	Resources Protected (months)	Special Considerations
K-85-01 	The Little Narrows Nearshore waters in the general area of: Lat. 56°56.54'N Lon. 154°09.05'W	Free-oil Recovery Maximize free-oil recovery in the offshore & nearshore environment of The Little Narrows depending on spill location and trajectory.	Deploy free-oil recovery strike teams upwind and up current of The Little Narrows. Use aerial surveillance to locate incoming slicks.	Deploy multiple free-oil recovery strike teams as required to maximize interception of oil before it impacts the sensitive areas in The Little Narrows.	Vessel Platform	Via marine waters Chart 16591-1	Same as K-85-02	Vessel master should have local knowledge. Use extreme caution, shoal waters with numerous reefs and rocks.
K-85-02 	The Little Narrows a. Lat. 56°56.97'N Lon. 154°08.73'W b. Lat. 56°56.92'N Lon. 154°09.17'W c. Lat. 56°56.92'N Lon. 154°09.34'W d. Lat. 56°57.87'N Lon. 154°08.80'W	Exclusion Exclude oil from entering the streams and intertidal area in The Little Narrows.	Approach the areas at high tide and deploy anchors and boom with skiffs. Arrays (a&c), place at an adequate angle to maintain exclusion. Arrays (b&d), place in a chevron pattern to exclude oil. Tend throughout the tide. <u>Boom Lengths:</u> a. 250 ft. b. 900 ft. c. 250 ft. d. 1000 ft.	Deployment Equipment 2400 ft. protected-water boom 12 ea. small anchor systems 16 ea. anchor stakes Vessels 2 ea. class 6 Personnel/Shift 4 ea. vessel crew/general tech Tending Vessels 1 ea. class 6 Personnel/Shift 2 ea. vessel crew/general tech	Akhoik boat launch	Via marine waters Chart 16591-1	Fish- intertidal spawning- salmon (May-Sept.), herring(April-May) Birds-waterfowl concentration, seabird nesting Marine mammals- seals, otters Habitat- marsh, gravel beach Human uses-commercial fishing, subsistence.	Vessel master should have local knowledge. A large population of bears are in the area. A bear guard is required. Site surveyed 05/21/08 Tested: not yet
K-85-03 	The Little Narrows Stream Lat. 56°57.92'N Lon. 154°09.01'W	Passive Recovery Place passive recovery across the channel of the stream in The Little Narrows.	Deploy snare line or sorbent boom and anchor across the identified stream. Replace as necessary to maximize the recovery.	Deployment Equipment 100 ft. snare line or sorbent boom 1 ea. small anchor systems 4 ea. anchor stakes Vessels/Personnel/Shift Same as K-85-02 Tending Vessels/Personnel/Shift Same as K-85-02	Akhoik boat launch	Via marine waters Chart 16591-1	Same as K-85-02	Vessel masters should have local knowledge. Use snare line for persistent oils and sorbent boom for non-persistent oils. Tested: not yet