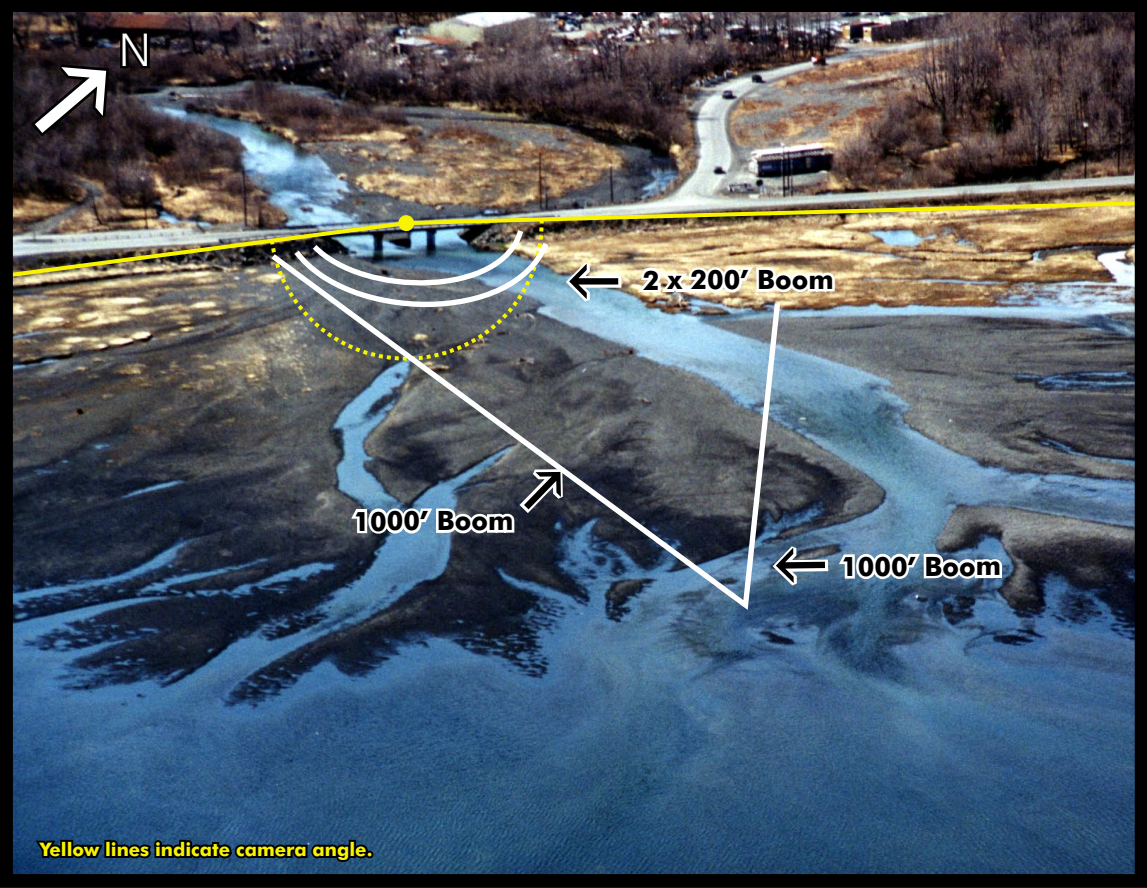
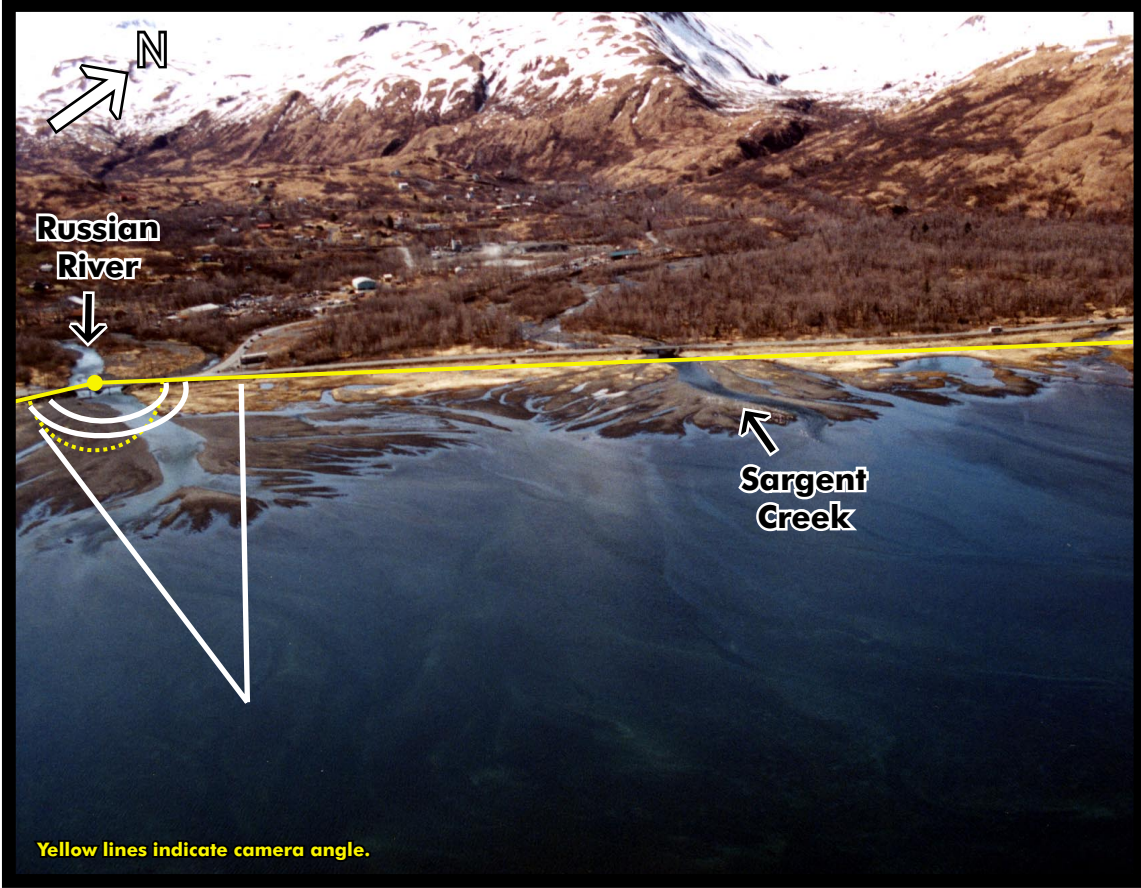




Kodiak GRS K-3

Russian River



Latitude/Longitude: N 57° 42' 56" / W 152° 34' 16"

Location: Womens Bay, Kodiak. NOAA Chart No. 16596, USGS Kodiak C-2 Quad.

Response Objective: Prevent oil from entering the Russian River and protect eelgrass beds.

Shoreline Characteristics: Sheltered tidal flats.

Site Access: The mouth of the Russian River is accessible from the Kodiak road system (Rezanof Drive).

Staging Area: Parking lot across the street adjacent to river. Warehouse space nearby at Coast Guard Base and Kodiak airport.

AS THE CIRCUMSTANCES OF THE EMERGENCY ALLOW:

A. Response Strategy:

1. Maximize on-water recovery in the off shore-near shore environment.
2. Deploy 2, 1000' sections of boom backed with 2, 200' sections of secondary exclusion boom at bridge (see diagram).
3. Monitor the boom as oil hits to ensure that angles are correct. Be aware of changes in tides, winds and currents.
4. Deploy oil snares and sweep in eelgrass to passively collect oil.

B. Response Considerations:

Possible presence of sea ice in Women's Bay during winter. Heightened brown bear activity during pink salmon runs could disrupt boom configurations and pose threat to workers.

C. Historic Properties Considerations:

REPORT any cultural resources found during operations to the FOSC Historic Properties Specialist.

Currents, Tides & Winds: Winds variable with northwest winds prevailing. Evaluate wind speed/direction at time of response. Average tidal range is 12 ft. Consult local charts for tides.

Wildlife Considerations: The Russian River supports runs of all five Alaskan salmon species. Salmon runs begin in May and continue through November. Sea lions are found in the area. The Russian River has eagle and seabird concentrations as well as occasional brown bear activity. Emperor geese October-May. Aleutian, arctic terns (nesting) May-August. Occasional Sea otters.

Risk Factors: Spill risks include vessel traffic in and around the harbor and the Coast Guard Base. Large upland storage of diesel, gasoline, and jet fuel at U. S. Coast Guard Base. Occasional freighter and tank vessel traffic in Womens Bay.

Human Use: Road accessibility and healthy salmon runs make the Russian River a popular fishing site. Other uses include subsistence, commercial, sport salmon fishing and clam harvesting. October 2001

EQUIPMENT RECOMMENDED		NEAREST EQUIPMENT	
		USCG MSD Kodiak (907)486-5918	
QUANTITY	DESCRIPTION	QUANTITY	DESCRIPTION
2000'	10" x 16" Boom	2000'	10" x 16" Boom
600'	3" x 6" Boom	500'	3" x 6" Boom
10	22 lb anchors	33	22 lb anchors
10	40 lbs anchors	10	40 lb anchors
2	Class 5 vessels	4	Tow bridles
		3 cases	Snares
		57 bales	Sweep
Refer to Kodiak Subarea Contingency Plan for additional regional equipment lists.			



This GRS was funded in part by the Alaska Coastal Management Program from a NOAA grant (Award No. NA87OZ0225) and administered by the Alaska Division of Governmental Coordination and the Department of Community and Economic Development. The views expressed herein are those of the planholders (KIB, ADEC, USCG) and do not necessarily reflect the views of NOAA or any of its subagencies.

Kodiak GRS K-3