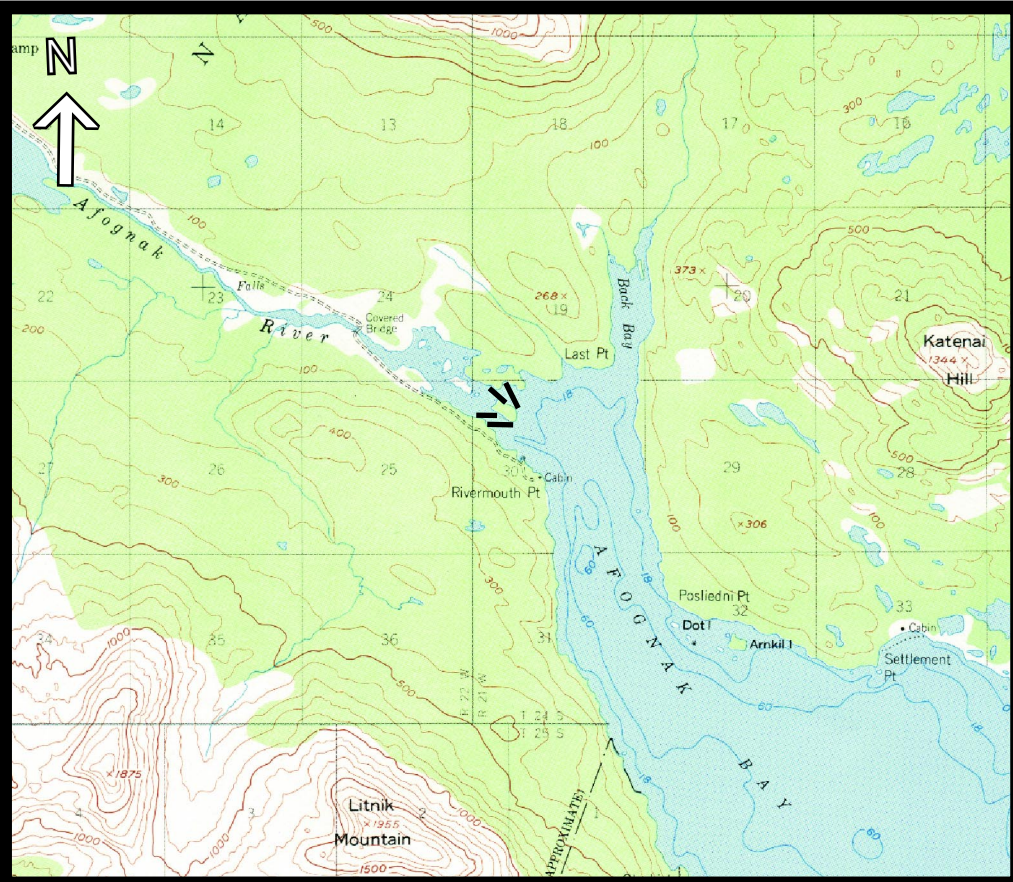




Kodiak GRS K-16

Afognak Bay



Latitude/Longitude: N 58° 4' 18" / W 152° 46' 52"

Location: Afognak Bay, Afognak Island. NOAA Chart No.16594, USGS Afognak A-3 Quad.

Response Objective: Prevent oil from entering inner Afognak Bay/Afognak River.

Shoreline Characteristics: Sheltered rocky shores, scarps and gravel beaches.

Site Access: Afognak Bay is only accessible by vessel, float plane or helicopter. Direct air distance from Ouzinkie to Afognak Bay is 15 miles.

Staging Area: Ouzinkie landing strip.

AS THE CIRCUMSTANCES OF THE EMERGENCY ALLOW:

A. Response Strategy:

1. Maximize on-water recovery in the off shore-near shore environment.
2. Utilize sufficient vessels of opportunity to transport and deploy 28 100' sections of boom, 16 anchoring systems and four tow bridles from Ouzinkie dock.
3. Beginning at the high tide line of the southern shore anchor one end of the boom, then use vessels of opportunity to tow out the other end. Stretch it tightly and drop anchors as necessary to secure.
4. Anchor the other end of the boom on the southern shore of the island. Additional anchors may be necessary in rough weather (wind/current).
5. Repeat steps 2 and 3 to install a second line of boom from northern shore of island to northern shore of the bay. Additional anchors may be necessary in rough weather (wind/current).
6. Deploy secondary boom as described above and shown in photos.
7. Monitor the boom as oil hits to ensure that angles are correct. Be aware of changes in tides, winds and currents.

B. Response Considerations:

This strategy is designed to protect Afognak Bay/Afognak River. Monitor situation closely to designate recovery points to minimize shoreline impact.

C. Historic Properties Considerations:

FOSC Historic Properties Specialist should MONITOR on-site operations.

Currents, Tides & Winds: Winds variable with northwest winds prevailing. Evaluate wind speed/direction at time of response. Average tidal range is 10 ft. Consult local charts for tides.

Wildlife Considerations: Afognak Bay supports runs of all five Alaskan salmon species, and is also a herring habitat. Salmon runs begin in May and continue through November. The most common marine mammal is the sea otter. Afognak Bay also supports seabird and eagle concentrations as well as brown bear activity. Winter, sea ducks (including some Steller's and king eiders) around Hog Island and reef areas outside booms.

Risk Factors: Spill risks include vessel traffic through Afognak Bay, Marmot Bay and the Gulf of Alaska.

Human Use: Subsistence salmon fishing, clam harvesting and crabbing. Sport and commercial salmon fishing.

October 2001



Developed By: TECHNICAL RESPONSE PLANNING CORPORATION
This GRS was funded in part by the Alaska Coastal Management Program from a NOAA grant (Award No. NA87OZ0225) and administered by the Alaska Division of Governmental Coordination and the Department of Community and Economic Development. The views expressed herein are those of the planholders (KIB, ADEC, USCG) and do not necessarily reflect the views of NOAA or any of its subagencies.



EQUIPMENT RECOMMENDED		NEAREST EQUIPMENT (Ouzinkie)	
		City Hall (907)680-2209	
QUANTITY	DESCRIPTION	QUANTITY	DESCRIPTION
2800'	8" x 10" Boom	3000'	8" x 10" Containment boom
16	40 lb anchors	1200'	17" x 19" Sorbent pads (3M)
4	Tow bridles	30	Sorbent sweep bundles
2 (min)	Class 3 or 4 vessels	150'	Parker snare on rope
		12	Tow bridles
		36 rolls	Heavy duty bags
		3	Wringers
		3	Overpack drums
			No anchors
Refer to Kodiak Subarea Contingency Plan for additional regional equipment lists.			

Kodiak GRS K-16