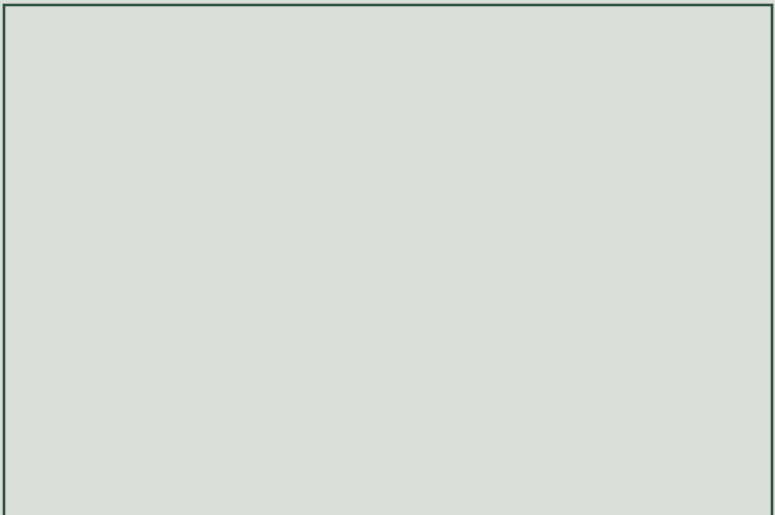
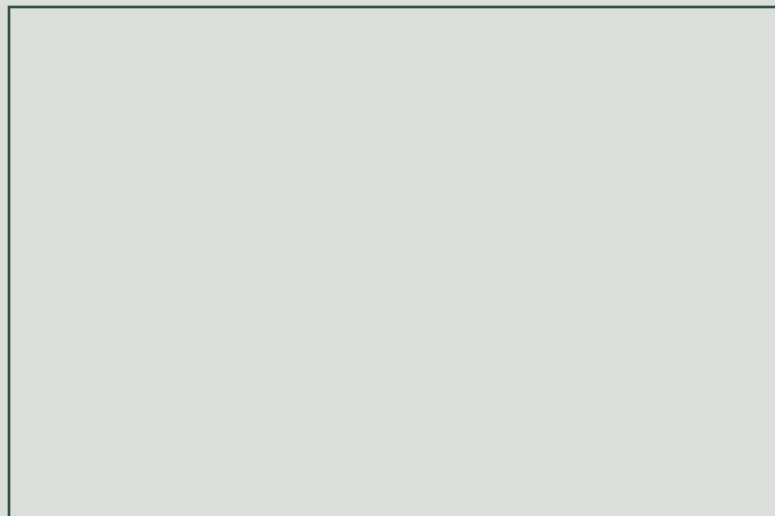


Map & Photo Legend



caption

- | | | | |
|--|--|--|----------------------|
| | Free-oil Containment and Recovery, Shallow Water | | Diversion Booming |
| | Exclusion Booming | | Protected-water Boom |
| | Deflection Booming | | Shoreside Recovery |

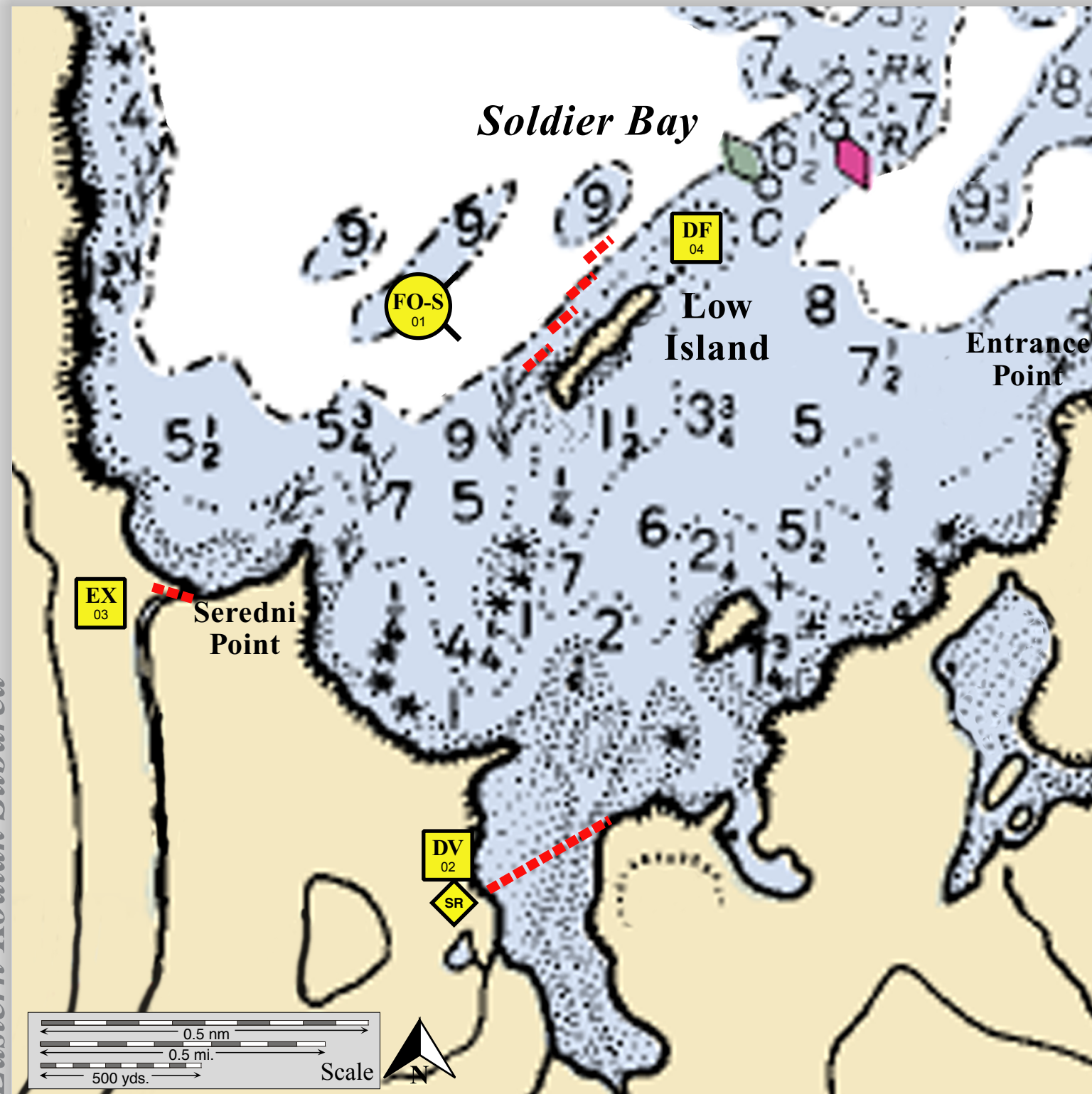


caption

Soldier Bay, K-70





Center of map at 57° 53.9' N Lat., 152° 36.6' W Lon.

Geographic Response Strategies for Eastern Kodiak Subarea



This is not intended for navigational use.

Soundings in fathoms

ID	Location and Description	Response Strategy	Implementation	Response Resources	Staging Area	Site Access	Resources Protected (months)	Special Considerations
K-70-01 	Soldier Bay Nearshore waters in the general area of: Lat. 57°54.55'N Lon. 152°34.17'W	Free-oil Recovery Maximize free-oil recovery in the offshore & nearshore environment of Soldier Bay depending on spill location and trajectory.	Deploy free-oil recovery strike teams upwind and up current of Soldier Bay. Use aerial surveillance to locate incoming slicks.	Deploy multiple free-oil recovery strike teams as required to maximize interception of oil before it impacts the sensitive areas in Soldier Bay.	Vessel Platform	Via marine waters Chart 16594-1	Same as K-70-02	Vessel master should have local knowledge. Use extreme caution, shoal waters with numerous rocks and hazards.
K-70-02 	Soldier Bay Lat. 57°53.88'N Lon. 152°33.66'W	Divert and Collect Divert oil to shore-side collection points determined by spill source and trajectory	Deploy anchors and boom with skiffs (class 6). Place 1500 ft. of protected-water boom at the proper angle to divert incoming oil to the collection sites. If conditions and sea-state are unfavorable to maintaining the effectiveness of the tactic, the array may be moved further back into the cove. Set up collection sites and tend throughout the tide.	Deployment Equipment 1500 ft. protected-water boom 7 ea. small anchor systems 4 ea. anchor stakes 1 ea. shore-side collection system Vessels 2 ea. class 6 Personnel/Shift 6 ea. vessel crew/general tech Tending Vessels 1 ea. class 6 Personnel/Shift 3 ea. vessel crew/general tech	Vessel Platform	Via marine waters Chart 16594-1	Fish- intertidal spawning- salmon (May-Sept.), herring(April-May) Birds-waterfowl concentration, seabird nesting Marine mammals- otters Habitat- marsh, exposed rocky shore, gravel beach Human uses-commercial fishing, recreation, sport fishing	Vessel master should have local knowledge. Take appropriate measures as outlined in the STARR Manual to protect the beach at the shore-side collection site. A large population of bears are in the area. A bear guard is required. Site not surveyed. Tested: not yet.
K-70-03 	Seredni Point Stream Lat. 57°54.28'N Lon. 152°34.86'W	Exclusion Exclude oil from entering the stream at Seredni Point.	Transport the boom to the beach via skiff. At high-tide, place 200 ft. of protected-water boom across the stream mouth at sufficient angle to provide exclusion of incoming oil. Tend throughout the tide.	Deployment Equipment 200 ft. protected-water boom 1 ea. small anchor systems 4 ea. anchor stakes Vessels/Personnel/Shift Same as K-70-02 Tending Vessels/Personnel/Shift Same as K-70-02	Vessel Platform	Via marine waters Chart 16594-1	Same as K-70-02	Vessel master should have local knowledge. Tested: not yet.
K-70-04 	Low Island Lat. 57°54.84'N Lon. 152°33.57'W	Deflection Deflect oil away from Low Island and back into the channel for free-oil recovery.	Deploy boom and anchor system with skiffs (class 6). Position 3 x 300 ft. sections of protected-water boom at a proper angle to deflect oil back into the channel for collection. Tend throughout the tide.	Deployment Equipment 900 ft. protected-water boom 9 ea. small anchor systems Vessels/Personnel/Shift Same as K-70-02 Tending Vessels/Personnel/Shift Same as K-70-02	Vessel platform	Via marine waters Chart 16594-1	Same as K-70-02	Vessel master should have local knowledge. This area is extremely exposed and will require favorable conditions to maintain. Tested: not yet.