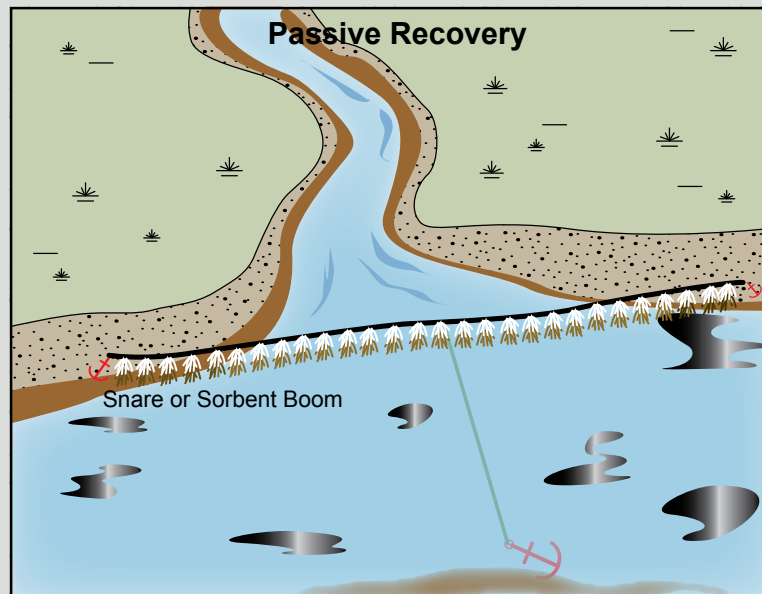


An example of the *Exclusion Booming Tactic*. Actual deployment should be adjusted for local conditions.



An example of the *Passive Recovery*. Actual deployment should be adjusted for local conditions.

Map Legend

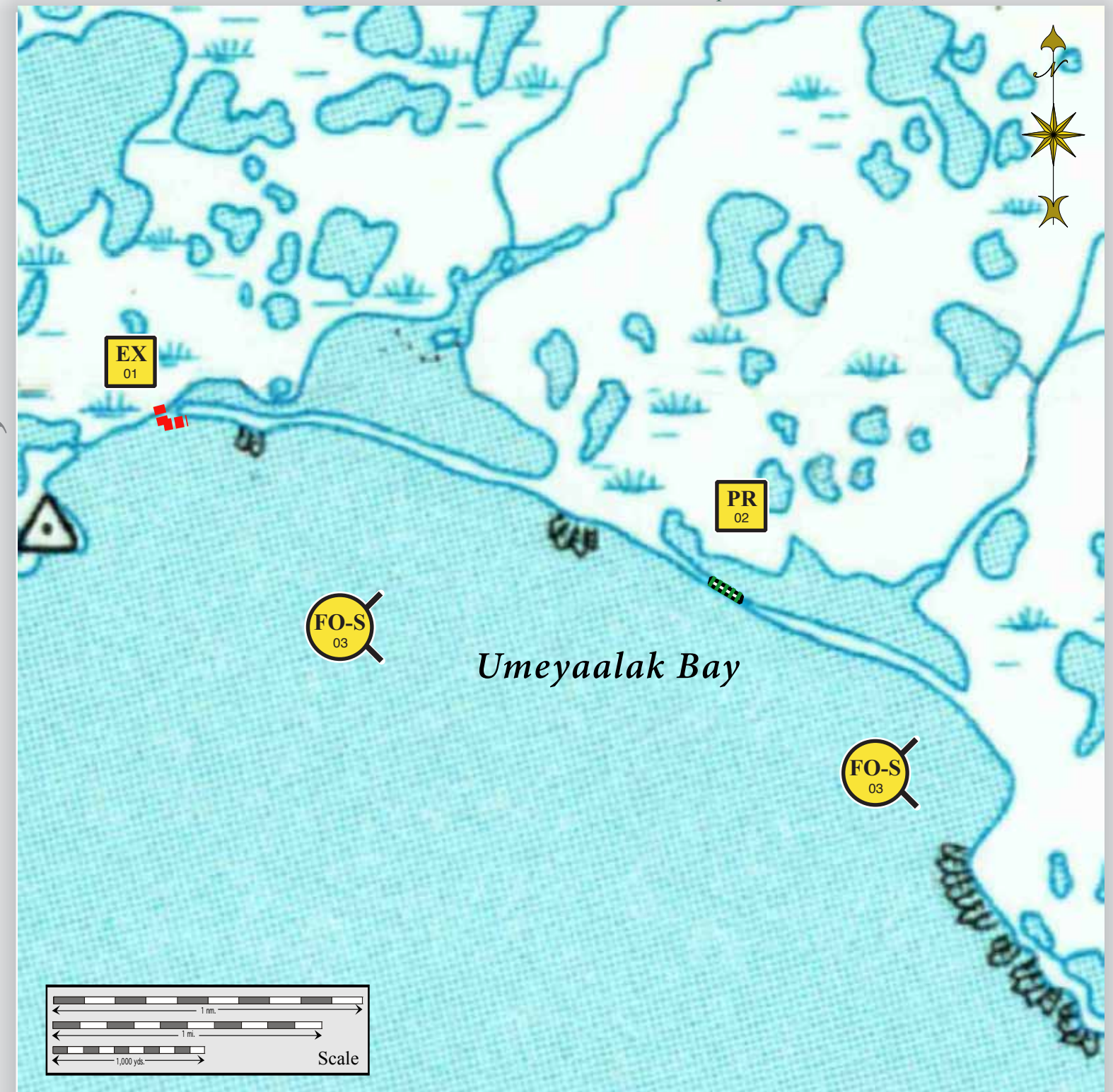
- Free-oil Recovery
- Deflection Booming
- Passive Recovery
- Protected-water Boom
- Snare or Sorbent Boom

Aerial photography of this area is unavailable at this time, but may be included as it becomes available.

Geographic Response Strategies for Northwest Arctic Subarea, St. Lawrence IS Zone

Umeyaalak Bay, NWA-SL19

Center of map at 63° 09.97' N Lat., 170° 05.65' W Lon.



This is not intended for navigational use.

ID	Location and Description	Response Strategy	Implementation	Response Resources	Staging Area	Site Access	Resources Protected (months)	Special Considerations
SL-19-01 EX	Umeyaalak Bay Lat. 63° 11.03'N Lon. 170°07.56'W	Exclusion Exclude oil from entering the identified lagoon. The lagoon may not be open to the ocean. Survey to determine if deployment is required.	Deploy anchors and boom with skiffs (class 6). Place 300 ft. of protected-water boom in a chevron pattern in front of the entrance to the lagoon. If the sea state prevents deployment outside the beach, move it inside to exclude the oil from reaching the stream. Tend throughout the tide.	Deployment Equipment 300 ft. protected-water boom 1 ea. anchor systems 4 ea. anchor stakes Vessels 1 ea. class 3 1 ea. class 6 Personnel/Shift 5 ea. vessel crew Tending Vessels 1 ea. class 6 1 ea. class 3 Personnel/Shift 5 ea. vessel crew	Vessel Platform	Via marine waters Chart 16006_1	Fish- herring spawning, dolly varden char, rainbow smelt, saffron cod, white fish Birds- waterfowl concentration, shorebird concentration, seabird nesting Habitat- gravel beaches, low lying tundra Human Use- Subsistence	Vessel master should have local knowledge. Consult the ADEC "Spill Tactics for Alaska Responders" manual for additional information on the deployment of these tactics. Consult the Site Selection Matrix for the Cultural Resources Designation. Survey: not yet Tested: not yet
SL-19-02 PR	Umeyaalak Bay Lat. 63° 10.23'N Lon. 170°03.80'W	Passive Recovery Deploy passive recovery across the channel of the streams in the area of Umeyaalak Bay in marshy areas. Aerial survey recommended prior to deployment to ensure that the lagoon is open to the ocean.	Place and anchor snare line or sorbent boom across the channels of streams in Umeyaalak Bay. Replace as necessary to maximize the recovery.	Deployment Equipment 300 ft. snare line or sorbent boom per site. 1 ea. anchor systems 4 ea. anchor stakes Vessels/Personnel/Shift Same as SL-19-01 Tending Vessels/Personnel/Shift Same as SL-19-01	Vessel Platform	Via marine waters Chart 16006_1	Same as SL-19-01	Vessel master should have local knowledge.
SL-19-03 FO-S	Umeyaalak Bay Nearshore waters in the general area of: Lat. 63° 07.46 N Lon. 171° 09.06 W	Free-oil Recovery Maximize free-oil recovery in the offshore & nearshore environment of Umeyaalak Bay area depending on spill location and trajectory.	Deploy free-oil recovery strike teams upwind and up current of Umeyaalak Bay area. Use aerial surveillance to locate incoming slicks.	Deploy multiple free-oil recovery strike teams as required to maximize interception of oil before it impacts sensitive areas.	72 nm to Gambell 168 nm to Nome	Via marine waters Chart 16006_1	Same as SL-19-01	Vessel master should have local knowledge. Use extreme caution, shoal waters with numerous reefs and rocks.

NOTE: Sensitive resource information can be found on other maps which can be accessed through the sensitive area section of the NWA Sub-Area Contingency Plan: http://dec.alaska.gov/spar/perp/plans/scp_nwa.htm.