

Map & Photo Legend



EX-02c viewed from the south.

-  Free-oil Recovery
-  Exclusion Booming
-  Protected-water Boom
-  Tidal-seal Boom

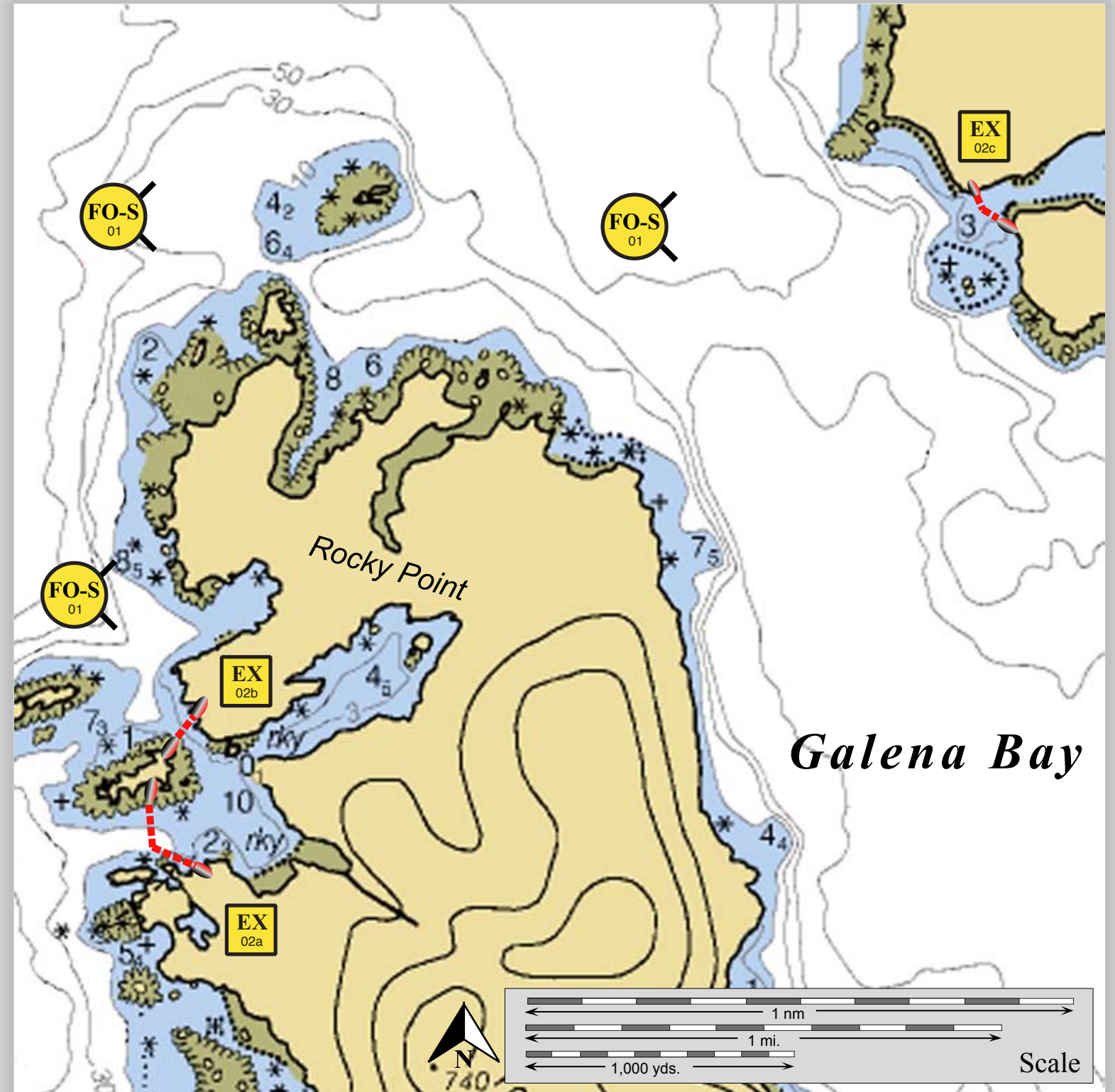




Rocky Point, EX-02a & b, viewed from the southwest.

Geographic Response Strategies for Northeast Prince William Sound Subarea

Entrance of Galena Bay & Rocky Point, PWS-NE30

Center of map at 60° 57.7' N Lat., 146° 44.2' W Lon.



ID	Location and Description	Response Strategy	Implementation	Response Resources	Staging Area	Site Access	Resources Protected (months)	Special Considerations
NE-30-01 	Galena Bay/Rocky Point Nearshore waters in the general area of: Lat. 60° 58.1 N Lon. 146°44.6 W	Free-oil Recovery Maximize free-oil recovery in the offshore & nearshore environment of Galena Bay/Rocky Point depending on spill location and trajectory.	Deploy free-oil recovery strike teams upwind and up current of Galena Bay and Rocky Point. Use aerial surveillance to locate incoming slicks.	Deploy multiple free-oil recovery strike teams as required to maximize interception of oil before it impacts sensitive areas.	Valdez Harbor	Via marine waters Chart 16707-1	Same as NE-30-02	Vessel master should have local knowledge. Use extreme caution shoal waters with numerous reefs and rocks.
NE-30-02 	Galena Bay/Rocky Point a. Lat. 60° 57.88 N Lon. 146°42.78 W b. Lat. 60° 57.01 N Lon. 146°45.47 W c. Lat. 60° 56.83 N Lon. 146°45.64 W	Exclusion Exclude oil from impacting the coves in Galena Bay and Rocky Point	Deploy anchors and boom with skiffs (class 6) at high tide. Both exclusion tactics consist of 50 ft. sections of tidal-seal boom on each shore and complete with specified sections protected-water boom. Place in a chevron formation in front the streams. Tend throughout the tide. <u>Boom Lengths:</u> a. 500 ft. b. 1000 ft. c. 450 ft.	Deployment Equipment 1950 ft. protected-water boom 300 ft. tidal-seal boom 10 ea. small anchor systems 12 ea. anchor stakes Vessels 1 ea. class 3/4 1 ea. class 6 Personnel/Shift 5 ea. vessel crew Tending Vessels 1 ea. class 3/4 1 ea. class 6 Personnel/Shift 3 ea. vessel crew	Vessel platform	Via marine waters Chart 16707-1	Fish- intertidal spawning-herring(April-May) Birds-waterfowl concentration Marine mammals-otters Habitat- Eel grass, gravel beach	Vessel master should have local knowledge. Pilot boats typically anchor in the cove behind NE-30-02b. Coordinate operations with pilots. Site Surveyed: 9/02/10 Tested: not yet