

IPaC – Information, Planning, and Conservation System





IPaC – Information, Planning, and Conservation System

The Information, Planning, and Conservation decision support system is a conservation planning tool for streamlining the environmental review process. It provides you with the ability to explore the landscape and help you to site your projects in a way that minimizes conflict with natural resources.

IPaC – Home Page

Public access to natural resource information

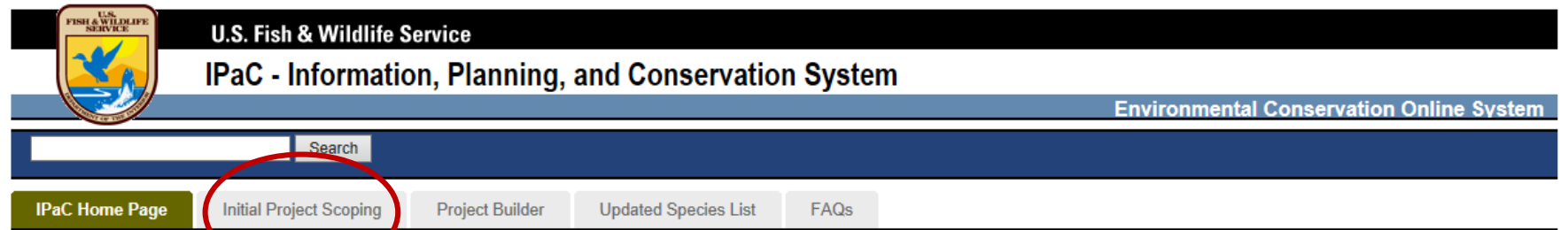
Maps

Preliminary or official species lists

Coming soon...

USFWS recommended project design

Project Manager Tool



IPaC features

- [Initial Project Scoping »](#):
 - Determine whether any threatened and endangered species, designated critical habitat, proposed critical habitat, Migratory Birds of Conservation Concern, or other natural resources of concern may be affected by your proposed project.
 - Interact with maps that summarize the distribution of important biological resources, such as wetlands, refuges, critical habitat, GAP land cover, and more.
 - Get a preliminary or official U.S. Fish and Wildlife species list.
 - In limited U.S. locations, receive a list of conservation measures (i.e., best management practices) designed specifically for particular project activity types.
 - In Wyoming, as part of the Landscape-scale Energy Action Plan (LEAP) pilot project, see/explore maps that show the distribution of resources important to LEAP-selected species, and maps of wetland potential improvement or re-establishment sites.
- [Get an updated Official Species List »](#):

If you previously received an Official Species List and wish to get an update one for the same project location, you will need the

 - 1) Consultation Code from the original species list, and
 - 2) email address used on the original species list request.
- [Frequently Asked Questions »](#):

Read more about how IPaC works and the types of information you can retrieve from IPaC.

What is IPaC?

The Information, Planning, and Conservation (IPaC) decision support system is a conservation planning tool for streamlining the environmental review process. It provides you-our partners-with the ability to explore the landscape and help you to site your projects in a way that minimizes conflicts with natural resources.

With IPaC's landscape explorer tool, you can view wetlands, GAP land cover, USFWS critical habitat, and other nature resource map layers.

Through IPaC, you can get a preliminary USFWS species list and, in many locations across the U.S., a USFWS Official Species list. Available, too, are links to species life history information, the USFWS Migratory Bird program, Bald and Golden Eagle Protection Act information, and more.

[\[read more at our FAQ page\]](#)

IPaC is a Partnership between:



IPaC – Define your project location

Step 1
Location

Step 2
Activities

Step 3
Trust resources list

Step 4
Conservation measures

Map Help

More info

Tip: While zooming in or out, or while drawing or editing a shape, you can cancel any time by pressing [Esc].

Zoom in by selecting the Zoom In tool, and then draw a rectangle on the map by clicking and dragging the mouse. Press Esc key or click another map button to leave zoom-in mode.
[Show Me](#)

Zoom out by selecting the Zoom Out tool, and then draw a rectangle on the map by clicking and dragging the mouse. Press Esc key or click another map button to leave zoom-in mode.
[Show Me](#)

Move the map up, down, or

Define your project location

☒ Map (using toolbar buttons) ☐ State/county list

Note: After drawing or uploading your project location and clicking Continue, the map layers selected below are displayed on the read-only map on the Trust Resources list (Step 3).

[Continue...](#)

Upload...

Change Basemap

Find a place...

Map Layers

Help

Satellite Map

• World Street Map

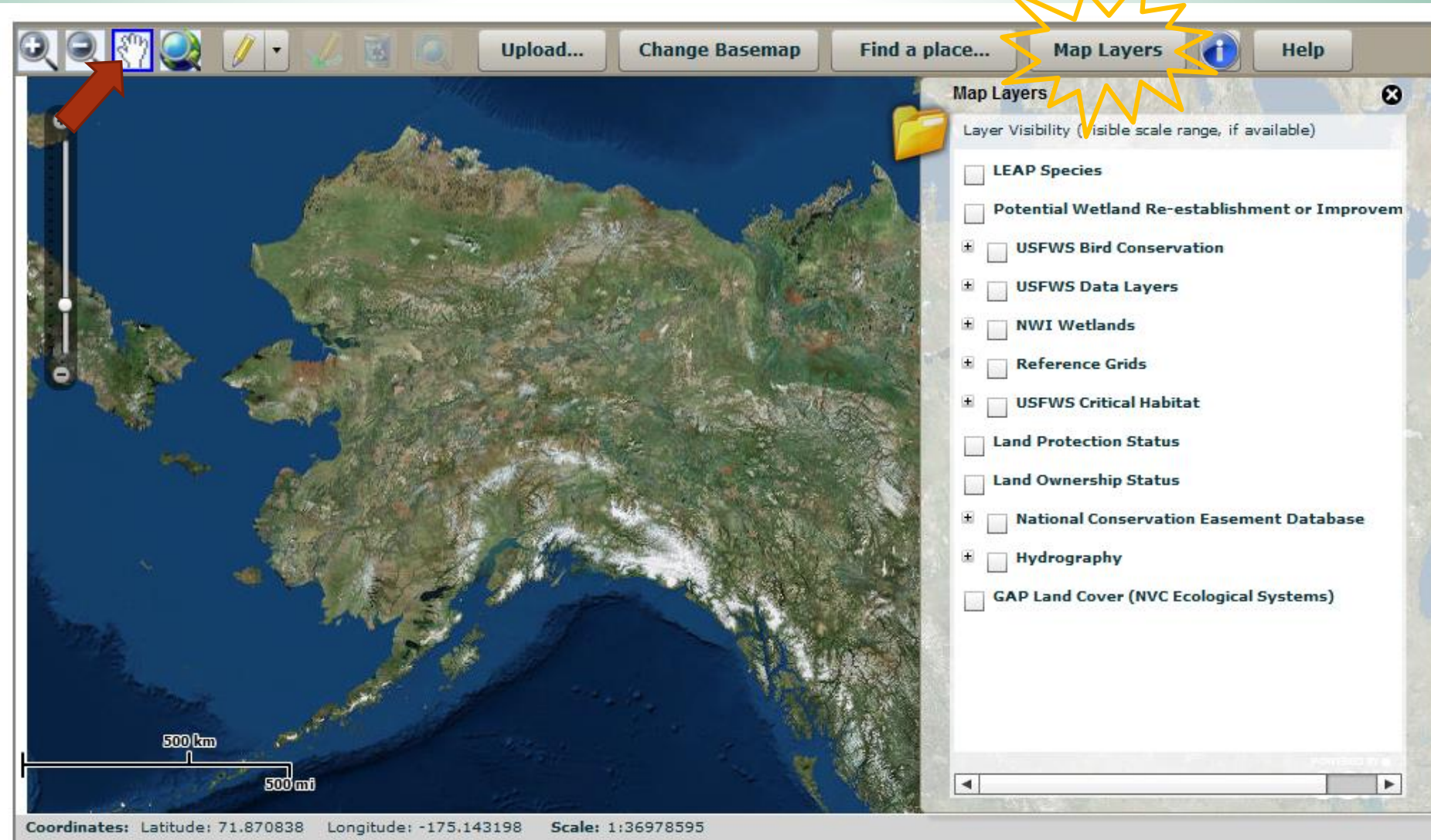
World Shaded Relief

World Topographic Map

POWERED BY

esri

IPaC – Define your project location



Continue...

IPaC – Find your location

Search by:

- Zoom
- Lat/long
- addresss

Step 1
Location

Step 2
Activities

Step 3
Trust resources list

Step 4
Conservation measures

Map Help [More info](#)

Tip: While zooming in or out, or while drawing or editing a shape, you can cancel any time by pressing [Esc].

Zoom in by selecting the Zoom In tool, and then draw a rectangle on the map by clicking and dragging the mouse. Press Esc key or click another map button to leave zoom-in mode. [Show Me](#)

Zoom out by selecting the Zoom Out tool, and then draw a rectangle on the map by clicking and dragging the mouse. Press Esc key or click another map button to leave zoom-in mode. [Show Me](#)

Move the map up, down, or

Define your project location

☒ Map (using toolbar buttons) ☐ State/county list

Note: After drawing or uploading your project location and clicking Continue, the map layers selected below are displayed on the read-only map on the Trust Resources list (Step 3).

[Continue...](#)

Place Finder ✕

Address **Long/Lat**

Address:

City:

State: **AK** ▼

Zip:

[Locate](#) [Clear](#)

500 km

500 mi

Coordinates: Latitude: 70.555104 Longitude: -173.243097 **Scale:** 1:36978595

POWERED BY **esri**

IPaC – Find your location

Step 1
Location

Step 2
Activities

Step 3
Trust resources list

Step 4
Conservation measures

Map Help [More info](#)

Tip: While zooming in or out, or while drawing or editing a shape, you can cancel any time by pressing [Esc].

Zoom in by selecting the Zoom In tool, and then draw a rectangle on the map by clicking and dragging the mouse. Press Esc key or click another map button to leave zoom-in mode. [Show Me](#)

Zoom out by selecting the Zoom Out tool, and then draw a rectangle on the map by clicking and dragging the mouse. Press Esc key or click another map button to leave zoom-in mode. [Show Me](#)

Move the map up, down, or

Define your project location

☒ Map (using toolbar buttons) ☐ State/county list

Note: After drawing or uploading your project location and clicking Continue, the map layers selected below are displayed on the read-only map on the Trust Resources list (Step 3).

Continue...

Upload... Change Basemap Find a place... Map Layers Help

Place Finder

Address Long/Lat

Longitude (X): * -132.357175

Latitude (Y): * 56.422290

Example: -85.757, 38.174

Locate Clear

500 km 500 mi

Coordinates: Latitude: 72.656395 Longitude: -171.482108 Scale: 1:36978595

POWERED BY esri

Continue...

Step 1

Location

Step 2

Activities

Step 3

Trust resources list

Step 4

Conservation measures

Map Help

[More info](#)

Tip: While zooming in or out, or while drawing or editing a shape, you can cancel any time by pressing [Esc].



Zoom in by selecting the Zoom In tool, and then draw a rectangle on the map by clicking and dragging the mouse. Press Esc key or click another map button to leave zoom-in mode.

[Show Me](#)



Zoom out by selecting the Zoom Out tool, and then draw a rectangle on the map by clicking and dragging the mouse. Press Esc key or click another map button to leave zoom-in mode.

[Show Me](#)



Move the map up, down, or

Define your project location

☒ Map (using toolbar buttons)

☐ State/county list

Note: After drawing or uploading your project location and clicking Continue, the map layers selected below are displayed on the read-only map on the Trust Resources list (Step 3).

[Continue...](#)

Upload... Change Basemap Find a place... Map Layers Help

Place Finder

Locations Found:

Coordinates

-132.357175, 56.422290

New Search

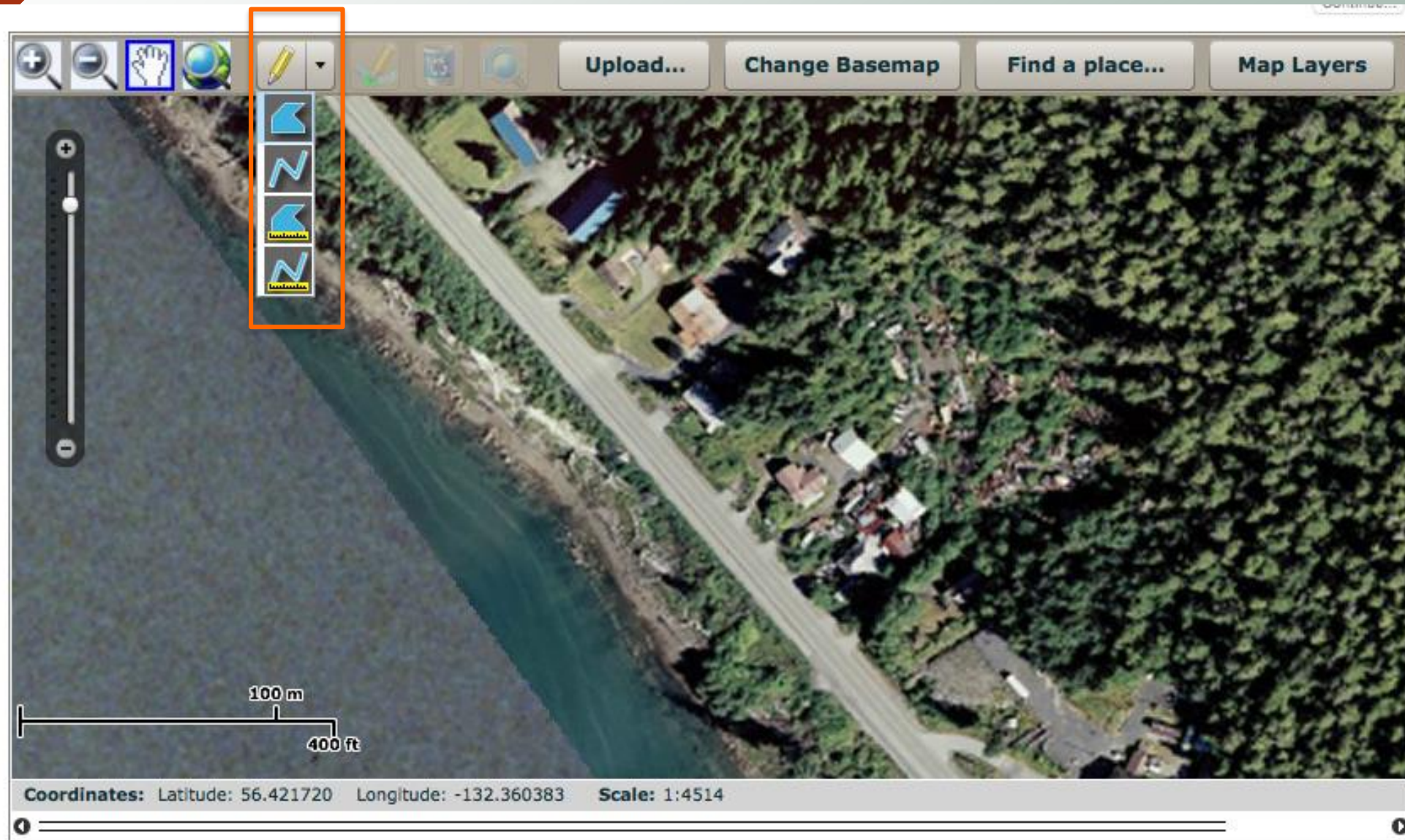
200 m

500 ft

Coordinates: Latitude: 56.423880 Longitude: -132.346639 Scale: 1:9028

POWERED BY esri

[Continue...](#)



Step 1

Location

Step 2

Activities

Step 3

Trust resources list

Step 4

Conservation measures

Map Help

[More info](#)

Tip: While zooming in or out, or while drawing or editing a shape, you can cancel any time by pressing [Esc].



Zoom in by selecting the Zoom In tool, and then draw a rectangle on the map by clicking and dragging the mouse. Press Esc key or click another map button to leave zoom-in mode.

[Show Me](#)



Zoom out by selecting the Zoom Out tool, and then draw a rectangle on the map by clicking and dragging the mouse. Press Esc key or click another map button to leave zoom-in mode.

[Show Me](#)



Move the map up, down, or

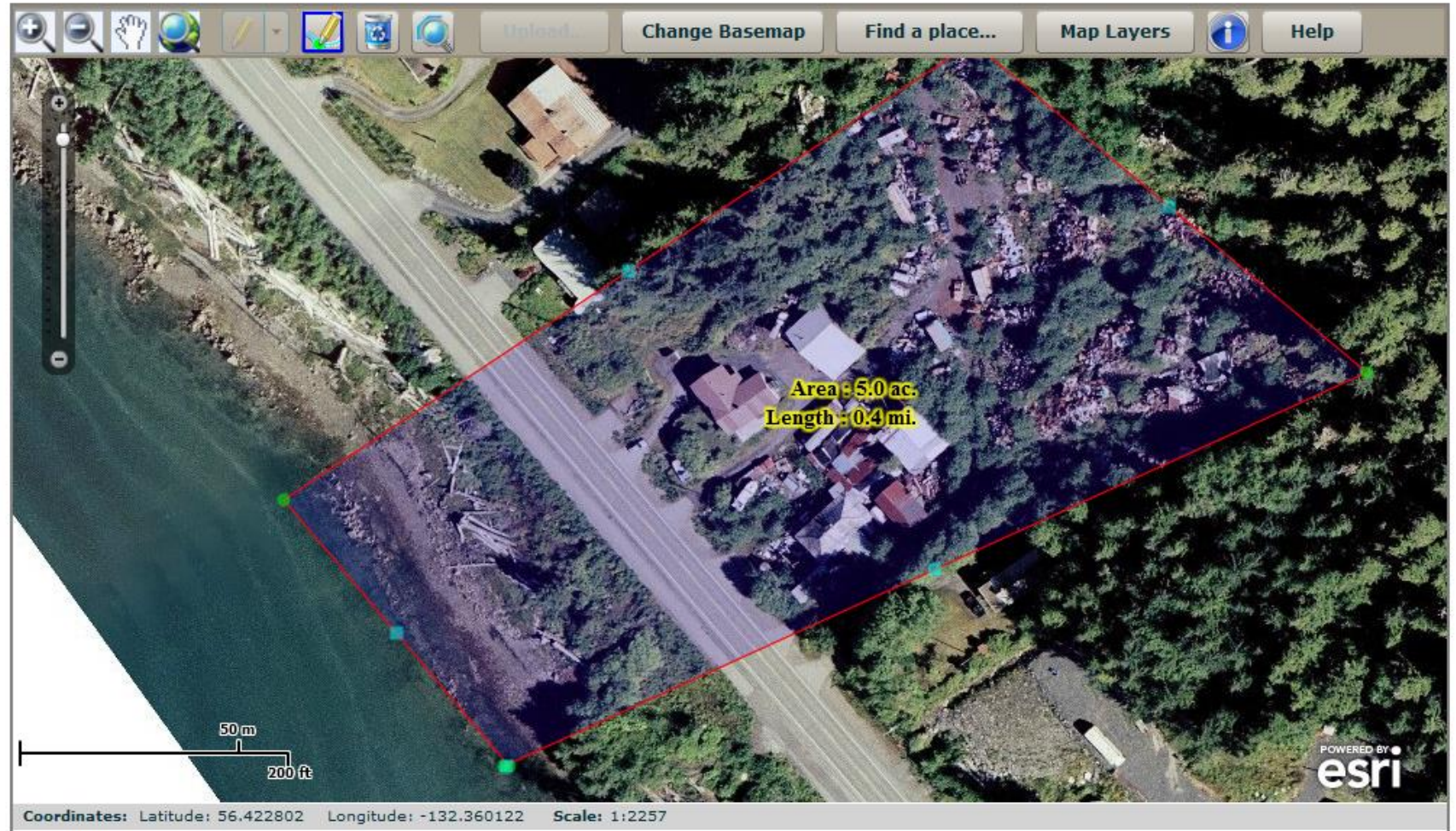
Define your project location

☒ Map (using toolbar buttons)

☐ State/county list

Note: After drawing or uploading your project location and clicking Continue, the map layers selected below are displayed on the read-only map on the Trust Resources list (Step 3).

[Continue...](#)



[Continue...](#)

 [IPaC Home Page](#)[Initial Project Scoping](#)[Project Builder](#)[Updated Species List](#)[FAQs](#)

[Step 1](#)

Location

[Step 2](#)

Activities

[Step 3](#)

Trust resources list

[Step 4](#)

Conservation measures

Describe your project

Select your project type:

Agriculture
Animal Control
Aquaculture
Biological Control
Bridge Construction / Maintenance
Communications Tower
Customs and Border Protection
Dam
Deepwater Horizon Oil Spill Response
Department of Energy Operations
Development
Dredge / Excavation
Federal Grant / Loan Related
Fill
Fire
Forestry
Guidance
Highway Safety and Maintenance
Invasive Species Control
Land - Acquisition
Land - Clearing
Land - Creation
Land - Disposal / Transfer
Land - Drainage
Land - Easement / Right-Of-Way
Landfill
Land - Flooding
Land - Management Plans
Land - Preservation

Last updated: March 23, 2015

[ECOS Home](#) | [Contact Us](#)

[U.S. Fish and Wildlife Service](#)

[Home](#) | [USA.gov](#) | [About the U.S. Fish and Wildlife Service](#) | [Accessibility](#) | [Privacy](#) | [Notices](#) | [Disclaimer](#) | [FOIA](#)

[Step 1](#)

Location

[Step 2](#)

Activities

Step 3

Trust resources list

Step 4

Conservation measures

Trust Resources List

[Back](#)

[Continue...](#)

An online Endangered Species Act species list IS available below for your project area, represented by the office(s) listed:

Anchorage Fish and Wildlife Field Office
605 WEST 4TH AVENUE, ROOM G-61
ANCHORAGE, AK 99501
(907) 271-2888

The Endangered Species Act species list below is for planning purposes only -- it is not an official species list.

To save or print all Trust Resources lists on this page, click here:

[Save or Print Trust Resources List](#)

[hide](#)

Enter Project Name (optional):

Project name:

[Generate PDF version](#)

To request an official species list, click here:

[Request an Official Species list](#)

Project Location Map:



Note: The map reflects the map layers selected on the Step 1 Location page. To change what appears on this map, return to the Location page and adjust the map layers.

Project Counties:

Wrangell - Petersburg, AK

Project type: Land - Restoration / Enhancement



U.S.

This resource list is to

Endangered Species
the following FWS

Anchorage Fish and
605 WEST 4TH AV
ANCHORAGE, AK
(907) 271-2888

Project Name:
Wrangell

03/19/2015



U.S. Fish and

Project Location Map:



Project Counties:

Wrangell - Petersburg, AK

Geographic coordinates (

MULTIPOLYGON (((-132.35832
-132.35832649 56.42171431)), ((
56.4231939, -132.3551448 56.42

Project Type:

Land - Restoration / Enhancement

03/19/2015



U.S. Fish and W

Endangered Species Act Sp

There are no listed species found within

Critical habitats within your project

There are no critical habitats within

FWS National Wildlife Ref

There are no refuges found within the

FWS Migratory Birds (US

The protection of birds is regulated
Protection Act (BGEPA). Any ac
including eagles, is prohibited unde
10.12 and 16 U.S.C. Sec. 668(a)). T
unintentionally killed or injured by
<http://www.fws.gov/migratorybirds/>

All project proponents are respons
planning and developing a project.
or existing project-related impacts t
measures that avoid, minimize, or
(2008) report identifies species, s
additional conservation actions, are
U.S.C 1531 et seq.).

For information about Birds of Con
<http://www.fws.gov/migratorybirds/>

To search and view summaries of
Knowledge Network Histogram T
[migratorybirds/CCMB2.htm](http://www.fws.gov/migratorybirds/CCMB2.htm)

For information about conservation
<http://www.fws.gov/migratorybirds/>

03/19/2015



U.S. Fish and W

Migratory birds of concern that m

There are 6 birds on your Migrator
migratory bird list of concern will c
User feedback is one method of id
submit comments about any question
does not occur in the specified locati
not appearing on the list). Comment

Species Name
Fox Sparrow (<i>Passerella iliaca</i>)
Marbled murrelet (<i>Brachyramphus marmoratus</i>)
Pelagic Cormorant (<i>Phalacrocorax pelagicus ssp. pelagicus</i>)
Pink-footed Shearwater (<i>Puffinus creatopus</i>)
Queen Charlotte goshawk (<i>Accipiter gentilis laingi</i>)
Short-billed Dowitcher (<i>Limnodromus griseus</i>)

NWI Wetlands (USFWS Na

The U.S. Fish and Wildlife Service
status of wetlands in the U.S., via th
wetlands within your immediate pro
in any evaluation of project impacts
may affect local hydrology within, a
the USFWS National Wetland Inven
wetlands and other aquatic habitats
Clean Water Act, or other State/Fed
requirements to their project with t
[District](#)

03/19/2015

In



U.S. Fish and Wildlife Service

Trust Resources List

Data Limitations, Exclusions and Precautions

The Service's objective of mapping wetlands and deepwater habitats is to produce reconnaissance level information on the location, type and size of these resources. The maps are prepared from the analysis of high altitude imagery. Wetlands are identified based on vegetation, visible hydrology and geography. A margin of error is inherent in the use of imagery; thus, detailed on-the-ground inspection of any particular site may result in revision of the wetland boundaries or classification established through image analysis.

The accuracy of image interpretation depends on the quality of the imagery, the experience of the image analysts, the amount and quality of the collateral data and the amount of ground truth verification work conducted. Metadata should be consulted to determine the date of the source imagery used and any mapping problems.

Wetlands or other mapped features may have changed since the date of the imagery and/or field work. There may be occasional differences in polygon boundaries or classifications between the information depicted on the map and the actual conditions on site.

Exclusions - Certain wetland habitats are excluded from the National mapping program because of the limitations of aerial imagery as the primary data source used to detect wetlands. These habitats include seagrasses or submerged aquatic vegetation that are found in the intertidal and subtidal zones of estuaries and nearshore coastal waters. Some deepwater reef communities (coral or tubercid worm reefs) have also been excluded from the inventory. These habitats, because of their depth, go undetected by aerial imagery.

Precautions - Federal, state, and local regulatory agencies with jurisdiction over wetlands may define and describe wetlands in a different manner than that used in this inventory. There is no attempt, in either the design or products of this inventory, to define the limits of proprietary jurisdiction of any Federal, state, or local government or to establish the geographical scope of the regulatory programs of government agencies. Persons intending to engage in activities involving modifications within or adjacent to wetland areas should seek the advice of appropriate federal, state, or local agencies concerning specified agency regulatory programs and proprietary jurisdictions that may affect such activities.

IPaC is unable to display wetland information at this time.

03/19/2015

Information, Planning, and Conservation System (IPAC)

Page 5 of 5

Version 1.4

Updates to DEC Contaminated Sites Database

Database tools

- Search by type
- Access web map
- Printer tool
- Guidance and Forms





Alaska Department of Environmental Conservation



search

DEC State of Alaska

State of Alaska > DEC > Home

Commissioner
Larry HartigDeputy Commissioner
Alice Edwards

HIGHLIGHTS

- ▶ Clean Water Actions Grants Awarded Totaling More Than \$424,000
- ▶ DEC has just initiated Phase 2 of the Alaska Water and Sewer Challenge for rural communities
- ▶ State Review Framework - EPA's review of the Division of Water, Compliance and Enforcement Program

Commissioner's Office



- ▶ Press Releases
- ▶ Public Announcements
- ▶ Notices
- ▶ Regulations

Administrative Services



- ▶ Budget Services
- ▶ Environmental Crimes Unit
- ▶ Financial Services
- ▶ IT Services
- ▶ Procurement Services

How Do I...

- | | |
|------------------------------------|-----------------------------|
| ★ Contact a Program Representative | ★ Comment on Regulations |
| ★ Access a Public Database | ★ Use DEC Online Services |
| ★ Report a Spill | ★ Appeal a DEC Decision |
| ★ Report an Environmental Crime | ★ Obtain a Food Worker Card |
| ★ Report Cruise Ship Concern | ★ Find an Interactive Map |

Air Quality



- ▶ Air Non-point Mobile Source
- ▶ Air Permit Program
- ▶ Monitoring and Quality Assurance

Water Quality



- ▶ Village Safe Water
- ▶ Municipal Grants and Loans
- ▶ Operations Assistance
- ▶ Compliance
- ▶ Cruise Ship
- ▶ Wastewater Discharge Authorization

Spill Prevention & Response



- ▶ Contaminated Sites
- ▶ Industry Preparedness
- ▶ Prevention & Emergency Response
- ▶ Response Fund Administration

Environmental Health



- ▶ Drinking Water
- ▶ Food Safety & Sanitation
- ▶ Laboratory Services
- ▶ Pesticides
- ▶ Solid Waste
- ▶ State Veterinarian

www.dec.state.ak.us

Division of Spill Prevention and Response
Contaminated Sites Program search

DEC State of Alaska



State of Alaska > DEC > SPAR > CSP

WELCOME

**Program Manager:**
Jennifer Roberts (907) 269-7553

The Contaminated Sites Program protects human health and the environment by managing the cleanup of contaminated soil and groundwater in Alaska.

ABOUT CS



- ▶ Contact Information
- ▶ Core Services
- ▶ Program Annual Report
- ▶ Frequently Asked Questions
- ▶ Sign up for our Email List

REGULATIONS AND
TECHNICAL GUIDANCE

▶ Current Regulations and Statutes, and

STATE/PRIVATE CLEANUP



- ▶ State, Local and Private Sites
- ▶ Leaking Underground Storage Tanks

FEDERAL FACILITIES
CLEANUP

- ▶ Federal Facilities Overview
- ▶ Department of Defense Cleanup
- ▶ Civilian Federal Agency Sites
- ▶ Community Involvement for Federal Facilities

RESOURCES FOR
SITE CLEANUP

- ▶ The Cleanup Process
- ▶ Fact Sheets and Publications
- ▶ Environmental Consultants
- ▶ Other Resources

RESEARCH



- ▶ Contaminated Sites Database
- ▶ Map of Contaminated Sites
- ▶ Contaminated Site Summaries

OF INTEREST



- ▶ Vapor Intrusion
- ▶ North Pole Sulfolane
- ▶ Areawide Investigations

How Do I...



- ▶ Learn about the Cleanup Process
- ▶ Search for Contaminated Sites
- ▶ Find Fact Sheets and Publications

CONTAMINATED SITES
WEB MAP



SPAR PROGRAMS

[Contaminated Sites](#)[Industry Preparedness](#)[Prevention and Emergency Response](#)[Response Fund Administration](#)

INFORMATION

[Report a Spill](#)[About Us](#)[Recent Spill Responses](#)[Approvals and Permits](#)[Guidance and Forms](#)

CONTAMINATED SITES PROGRAM DATABASE

The State of Alaska is required by law to recover expenses incurred during cleanup, including staff oversight time and legal expenses. Current and former landowners, as well as any future owner of said property for which cleanup costs are associated, may be liable for state cleanup expenditures, including expenses that predate the sale of property.

For closed sites, the search results will show details of closure including any conditions or restrictions placed upon closure.

Note: If you are a responsible party that is required to periodically report to DEC, you may submit documents electronically to dec.icunit@alaska.gov.

Contaminated Sites (CS) Database

[▶ Search Contaminated Sites Database](#)[▶ Map of Contaminated Sites](#)

Download All Records in Excel Format

[▶ Download all Contaminated Sites Records](#)[▶ Download all Leaking UST Records](#)

OTHER DATABASES

Underground Storage Tank (UST) Database

The Contaminated Sites Program database includes information about *Leaking* Underground Storage Tanks (LUST). For information about regular Underground Storage Tanks (UST), check out the UST Database.

[▶ UST Database](#)

Division of Spill Prevention and Response
Contaminated Sites Program

search

☐ DEC ☒ State of Alaska

State of Alaska > DEC > SPAR > CSP > Contaminated Sites Search

Contaminated Sites Search

Site Name: Street Address: Record Key: City: Hazard ID: Zip Code: Event ID: Borough: Status: File ID: Site Type: LUST Only: ☐

Search

Clear

Download All CS
Records (CSV)Note: DEC's Contaminated Sites
Complete - Institutional Controls

DEC gives 'Cleanup Complete' status to sites where the possibility of human exposure to hazardous substances from contamination does not pose a threat to future owners/operators of the site ('Institutional Controls.')

Details on closure of a

- Aircraft
- Airport/Airfield
- Cannery/Seafood Processing
- Chemical Manufacturing/Storage
- Child Daycare
- Commercial/Retail/Office
- Crude Oil Terminal
- Drug Lab
- Farm/Agriculture/Aquaculture
- Firing Range
- Gas Station
- Harbor/Port/Marina
- Highway Maintenance Station
- Hospital/Clinic
- Hotel/Lodge
- Landfill/Dump
- Laundry/Dry Cleaner
- Lighthouse/Navigational Beacon
- Log Processing/Sawmill
- Logging Operation
- Maintenance Yard/Shop
- Military Installation - Base/Post/Other
- Military Installation - Radar/Radio Relay Station
- Mining Operation
- Natural Gas Production
- Non-Crude Terminal
- Not Yet Documented
- Nursing Home/Adult Residential
- Oil Exploration/Offshore

The closure, replacing 'closed' and 'conditionally closed' with 'Cleanup Complete' and 'Cleanup

The contamination have achieved the most stringent levels established in state regulation, or the Department may allow hazardous substances to remain in the environment at a site if the site may be conditions or restrictions associated with the site that require compliance by current or future owners/operators; the department would then grant a 'Cleanup Complete - Institutional Controls' status (See

A special report on Institutional Controls is available for sites with that designation.

For information specific to a site, please contact the staffperson assigned, as noted in the upper right area of each site cleanup chronology.
For CSP database support please contact: [Evyonne Reese](#) at (907) 465-5229.

Division of Spill Prevention and Response
Contaminated Sites Program search

DEC State of Alaska

State of Alaska > DEC > SPAR > CSP > Contaminated Sites Search

Site Report: Chenega Bay Saltery

Site Name: Chenega Bay Saltery**Address:** Village of Chenega Bay, area directly south of public boat dock, Chenega Bay, AK 99574**File Number:** 2209.38.001**Hazard ID:** 1852**Status:** Cleanup Complete - Institutional Controls**Staff:** IC Unit, 9074655229 dec.icunit@alaska.gov**Latitude:** 60.065456**Longitude:** -148.009357**Potentially Responsible Parties:** Alaska Mental Health Trust Land Office

We make every effort to ensure the data presented here is accurate based on the best available information currently on file with DEC. It is therefore subject to change as new information becomes available. We recommend contacting the assigned project staff prior to making decisions based on this information.

Site Chronology

IC / Closure Details

Documents

Problems/Comments

Surface petroleum contamination visible at site. Site assessment was to follow. Oil spills and friable asbestos observed on site. Runoff was transporting contaminants to Crab Bay. Previous allegations of solvents and polychlorinated biphenyls on site are not confirmed. Locale also known as Crab Bay and Port Benney. The site is located on the east side of New Chenega Village. Crab Bay is on the northeast side of Sawmill Bay, Evans Island. Site also referred to as CERCLA AKD983066457, Chatham Strait Fish Company, aka Chatham Stuart Fish Company, aka Chatham Stewart Fish Company. Asbestos and structures removed circa 1994. Two soil excavation efforts were performed in 1995. Also location of a tank farm in 2003 which contained 3 ASTs painted with Tesoro's logo (see also file 2209.38.003). Tank farm is no longer there according to Chenega Village Council. Another former tank farm was adjacent and upgradient from the site.

Action Information

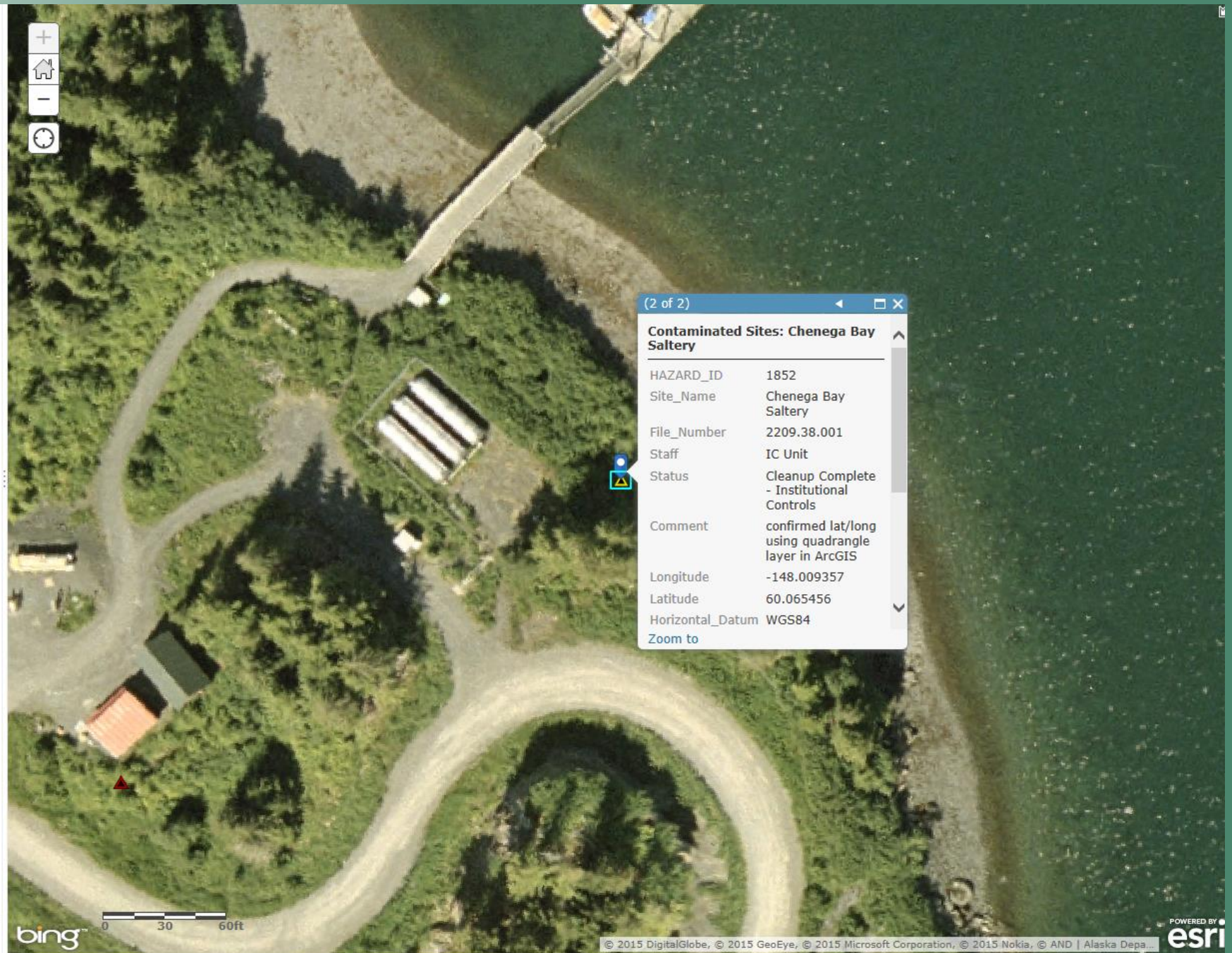
Action Date	Action	Description	DEC Staff
4/20/1990	Preliminary Assessment Approved	Ecology and Environment, Inc. is contractor. Site poses potential risk to local population due to presence of spilled oil and uncontained friable asbestos at site. A more thorough search of the structures and soil sampling may reveal the presence of additional CERCLA wastes. This action originally listed under Reckey 1984240126401.	Mike Kriebler
10/24/1990	Update or Other Action	Date Reckey 1984240126401 was entered into the database.	Mike Kriebler
8/6/1993	Meeting or Teleconference Held	ADEC SCRO and MSDO met with DOT&PF and consultant to discuss cleanup activities for this site.	Mike Kriebler

Legend

Contaminated_Sites

Contaminated Sites

- ▲ Active
- ▲ Cleanup Complete
- ▲ Cleanup Complete - Institutional Controls
- ▲ Informational



(2 of 2)

Contaminated Sites: Chenega Bay Saltery	
HAZARD_ID	1852
Site_Name	Chenega Bay Saltery
File_Number	2209.38.001
Staff	IC Unit
Status	Cleanup Complete - Institutional Controls
Comment	confirmed lat/long using quadrangle layer in ArcGIS
Longitude	-148.009357
Latitude	60.065456
Horizontal_Datum	WGS84
Zoom to	



SPAR PROGRAMS

[Contaminated Sites](#)[Industry Preparedness](#)[Prevention and Emergency Response](#)[Response Fund Administration](#)

INFORMATION

[Report a Spill](#)[About Us](#)[Recent Spill Responses](#)[Approvals and Permits](#)[Guidance and Forms](#)

CONTAMINATED SITES PROGRAM DATABASE

The State of Alaska is required by law to recover expenses incurred during cleanup, including staff oversight time and legal expenses. Current and former landowners, as well as any future owner of said property for which cleanup costs are associated, may be liable for state cleanup expenditures, including expenses that predate the sale of property.

For closed sites, the search results will show details of closure including any conditions or restrictions placed upon closure.

Note: If you are a responsible party that is required to periodically report to DEC, you may submit documents electronically to dec.icunit@alaska.gov.

Contaminated Sites (CS) Database

[▶ Search Contaminated Sites Database](#)[▶ Map of Contaminated Sites](#)

Download All Records in Excel Format

[▶ Download all Contaminated Sites Records](#)[▶ Download all Leaking UST Records](#)

OTHER DATABASES

Underground Storage Tank (UST) Database

The Contaminated Sites Program database includes information about *Leaking* Underground Storage Tanks (LUST). For information about regular Underground Storage Tanks (UST), check out the UST Database.

[▶ UST Database](#)



Division of Spill Prevention and Response Contaminated Sites Program



search

DEC State of Alaska

State of Alaska > DEC > SPAR > CSP > CSP Guidance and Forms

CSP GUIDANCE AND FORMS

Welcome to CSP Guidance and Forms. To search, simply type in a document name or keywords that relate to a specific document. To filter the results by category, simply select the appropriate category button below.

For CS regulations and statutes, please see [Current Regulations and Statutes](#), and [Proposed Regulation Changes](#).

View All

Project
ScopingScreening &
Establishing
Cleanup
LevelsCharacter-
ization &
CleanupAnalytical
Methods &
Quality
AssuranceHuman &
Ecological
RiskRemediation
OperationsClosure &
Institutional
Controls

Forms

APPENDIX I

DEC Building Survey and Indoor Air
Sampling QuestionnaireAppendix I, Building
Survey form

Updated: October 2012

Arctic Zone Cleanup
Levels Guidance

Updated: December 1999

Arsenic Technical
Memorandum

Updated: March 2009

Biogenic Interference and
Silica Gel Cleanup -
Technical Memorandum

Updated: May 2006

Cleanup Levels Guidance

Updated: June 2008

Conceptual Site Model
(CSM) Policy Guidance

Updated: October 2010

Contamination in
Hydrologically Connected
Groundwater and Surface
Water

Updated: April 2011

Cumulative Risk
Guidance – Adopted by
Reference

Updated: June 2008

DEC Fact Sheet –
Additional Information
about Exposure to TCE

Updated: January 2014

Design and Maintenance
of Landfarming
Operations - Checklist

Updated: March 2011

ALASKA DEPARTMENT OF ENVIRONMENTAL CONSERVATION
DIVISION OF SPILL PREVENTION AND RESPONSE
CONTAMINATED SITES PROGRAMGuidance on Controlling Discharges
and Cleanups in the
State of Alaska

Updated: 2011

ALASKA DEPARTMENT OF
ENVIRONMENTAL CONSERVATION
DIVISION OF SPILL PREVENTION AND RESPONSE
CONTAMINATED SITES PROGRAMALASKA DEPARTMENT OF
ENVIRONMENTAL CONSERVATION
DIVISION OF SPILL PREVENTION AND RESPONSE
CONTAMINATED SITES PROGRAMCONDUCTED CONTAMINANT ASSIGNMENT
FOR THE STATE OF ALASKA

Updated: 2011

