



DEC PWS* WEB MAP BASIC INSTRUCTIONS

For Construction General Permit

[AKR100000](#)

Charley Palmer, Hydrologist

State of Alaska

Department of Environmental Conservation (DEC)

Drinking Water Protection

907-269-0292 charley.palmer@alaska.gov

*PWS = public water system



Basic Permit Steps

1. Identify project area(s) using interactive web map
 - DEC GIS Web Map Gallery, <http://dec.alaska.gov/das/gis/apps.htm>
 - Map Title: "Alaska DEC Drinking Water Protection Areas"
2. Identify intersecting PWS Drinking Water Protection Area(s) (DWPA)
3. Notify PWS Contact(s)
 - Using web map
 - Click on DWPA(s), 'Click Here' in the pop-up to access Drinking Water Watch (DWW)
 - Direct: Drinking Water Watch, <http://dec.alaska.gov/DWW/>
 - Search for PWS of interest



How to Open Web Map

- Visit DEC Home, <http://dec.alaska.gov/>
 - Click on “DEC Maps” icon; or
 - Click on “Find Interactive Map” link

A screenshot of the Alaska Department of Environmental Conservation (DEC) website. The page features a header with the DEC logo and navigation links. A large banner image shows a group of orcas. Below the banner, there are sections for "HIGHLIGHTS", "Commissioner's Office", "Air Quality", "Spill Prevention & Response", "Administrative Services", "Water Quality", and "Environmental Health". A red box highlights the "How Do I..." section, which contains links to various services. A yellow arrow points from the "Find an Interactive Map" link in the "How Do I..." section to a "DEC Maps" icon in the bottom left corner. Another yellow arrow points from the "DEC Maps" icon to a "DEC Maps" icon in the bottom right corner. A third yellow arrow points from the "DEC Maps" icon in the bottom right corner to a "DEC Maps" icon in the bottom left corner.

How Do I...

- ★ Contact a Program Representative
- ★ Access a Public Database
- ★ Comment on Regulations
- ★ Use DEC Online Services
- ★ Appeal a DEC Decision
- ★ Obtain a Food Worker Card
- ★ Find an Interactive Map

DEC Maps



How to Open Web Map (cont'd.)

- Map Title: "Alaska DEC Drinking Water Protection Areas"
 - Includes some map layers from other DEC Programs (i.e., DEC Contaminates Sites)



The screenshot shows the Alaska Department of Environmental Conservation's Geographic Information Systems web page. The header includes the state logo, navigation links (myAlaska, My Government, Resident, Business in Alaska, Visiting Alaska, State Employees), and a search bar. The main content area is titled "WELCOME TO DEC WEB MAPS" and contains a paragraph about the map gallery. Below this is a search bar and a grid of map thumbnails. The thumbnails are arranged in a 4x2 grid. The first row includes "Alaska DEC Air Quality Advisories", "Alaska DEC AWS Challenge Communities", "Alaska DEC Boil Water Notices-Open", and "Alaska DEC Contaminated Sites". The second row includes "Alaska DEC Drinking Water Protection Areas", "Alaska DEC Fish Tissue Mercury Samples by Site", "Alaska DEC FNSB PM2.5 Nonattainment Area", and "Alaska DEC Impaired Waters". The third row includes "Alaska DEC Lead and Copper Advisories", "Alaska DEC Lead and Copper Advisories", "Alaska DEC Lead and Copper Advisories", and "Alaska DEC Lead and Copper Advisories". The fourth row includes "Alaska DEC Lead and Copper Advisories", "Alaska DEC Lead and Copper Advisories", "Alaska DEC Lead and Copper Advisories", and "Alaska DEC Lead and Copper Advisories". A yellow arrow points from the text "DEC Contaminates Sites" in the list to the map thumbnail for "Alaska DEC Drinking Water Protection Areas".




How to Open Web Map (cont'd.)

■ READ Description Page

■ Open in map viewer

ArcGIS Features Plans Gallery Map Scene Help Sign In

Alaska DEC Drinking Water Protection Areas

 This map displays Public (regulated) Drinking Water Protection Areas for known public water systems. The data is continuously being revised.

Web Map by adecadmin
Last Modified: March 9, 2016
★★★★★ (6 ratings, 25,539 views)
Sign in to rate this item.

[Facebook](#) [Twitter](#)

[OPEN](#)

[Open in map viewer](#)

[Open in ArcGIS for Desktop](#)

Note: The Regional Area layer displays the approximate location of Drinking Water Protection Areas for ground water and surface water sources. This layer will turn-off at 1 : 3,000,000 scale, Drinking Water Protection Areas are displayed at 1 : 3,000,000 scale.

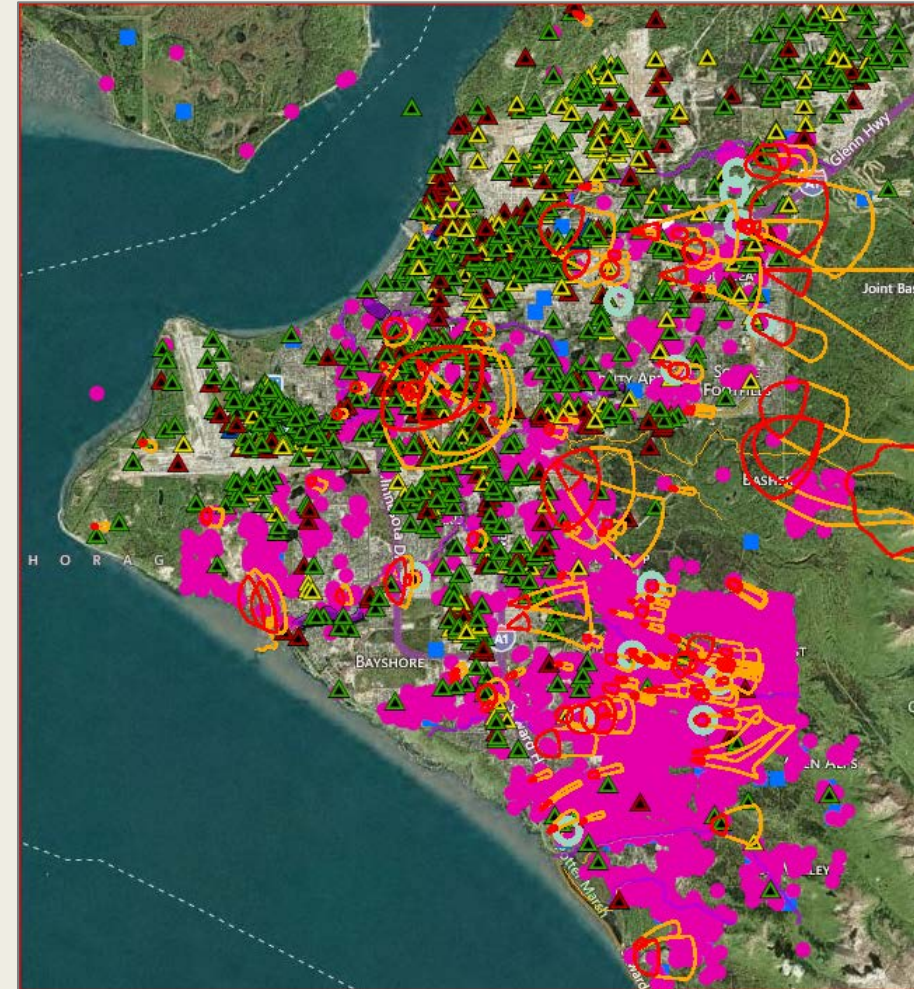
This map was created by the State of Alaska Department of Environmental Conservation-Drinking Water Program to assist the public identify known public Drinking Water Protection Areas in the State of Alaska. Please note: there are some known inaccuracies included in the data set and it is continuously being updated and corrected.



How to Open Web Map (cont'd.)

■ Error messages

- *This map uses data from various sources, some which we don't control.*
- *Some of these layers break occasionally, but usually only temporarily.*
- *If you receive an error message, click "OK".*
- *The map will still work, but that layer may be down temporarily.*
- *If it is a layer critical to your work, please let us know, and we can try to track down the issue.*





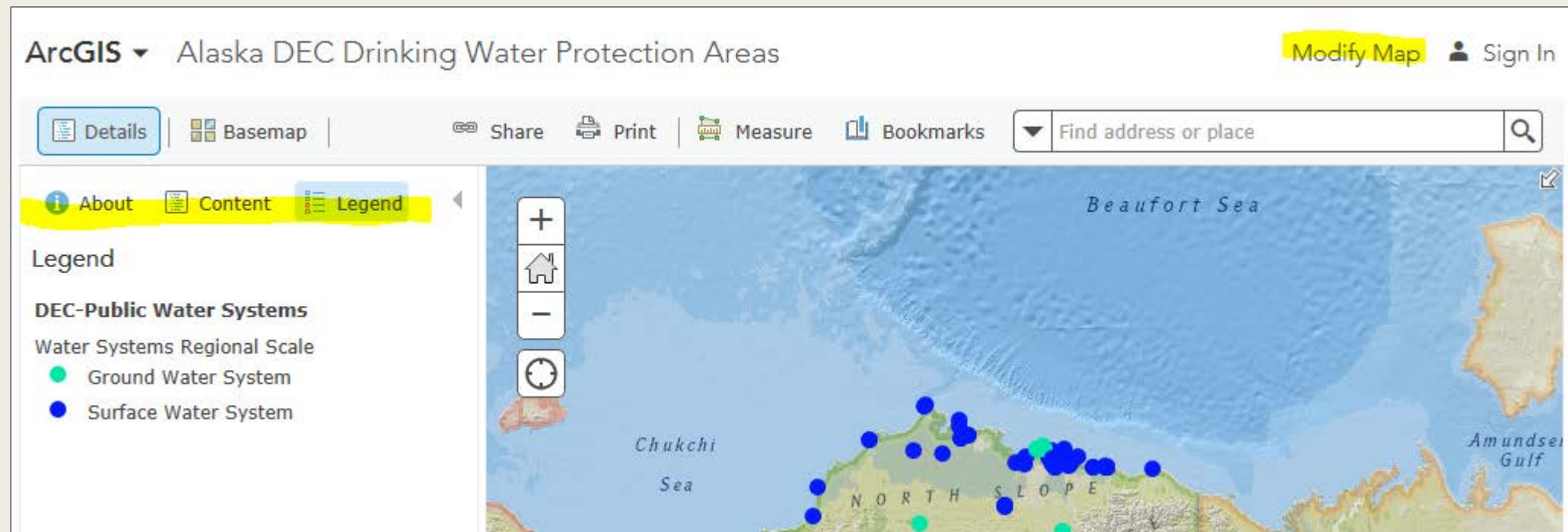
Basic Map Functions

■ About – Content – Legend

- *Content: Can go here to turn layers ON/OFF*
- *Legend: Can show this for printing/copying*

■ Modify Map

- *Enables additional functions, such as adding map notes (i.e., text, points, lines, areas)*
- *Will discuss in more detail later*

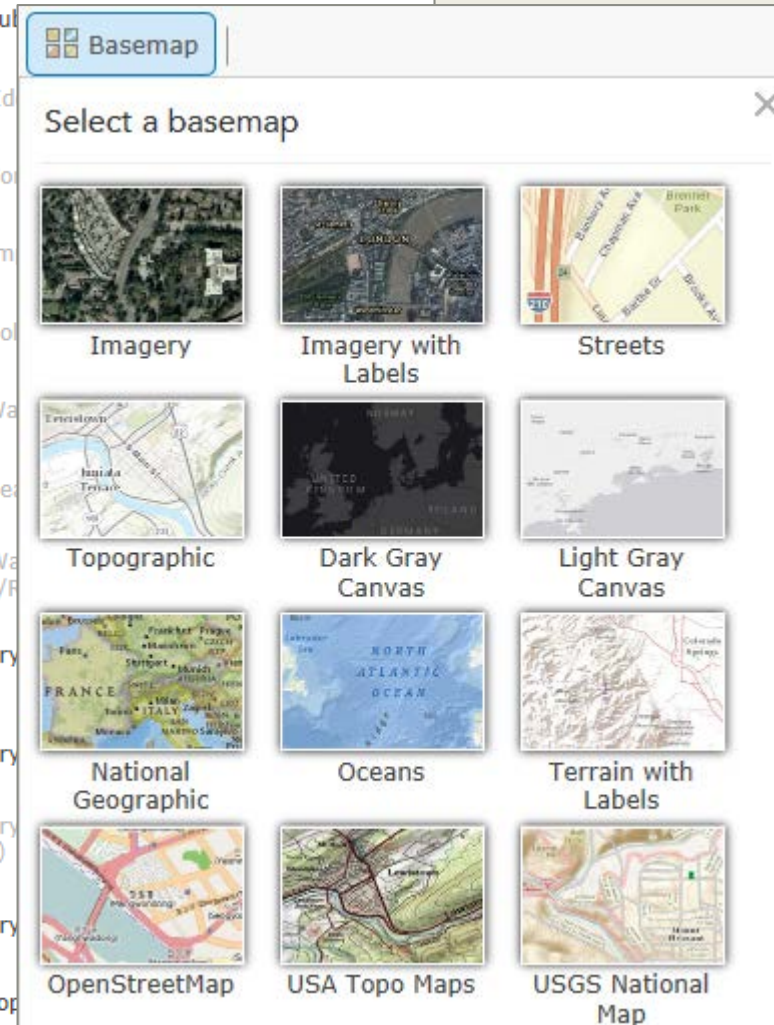


Content Layers

- Visibility and scale-dependencies
 - *Layers at top draw on top of those below*
 - *Checked = will draw (when at right scale)*
 - *Gray = Not visible until zoomed in to right scale*
- DEC data
 - *Includes layers from other DEC Divisions and Programs*
- DNR data
 - *Water Rights/Reservations, PLSS (Township/Range)*
- Imagery base layers
 - *Best imagery depends on region*
 - *Try other imagery layers if not good in your area*
- Other basemaps
 - *Always at bottom of list and drawn underneath other layers*
 - *Topographic, roads, terrain, NOAA charts, etc.*

Contents

- ☐ Sections
- ☐ Meridian Township Range

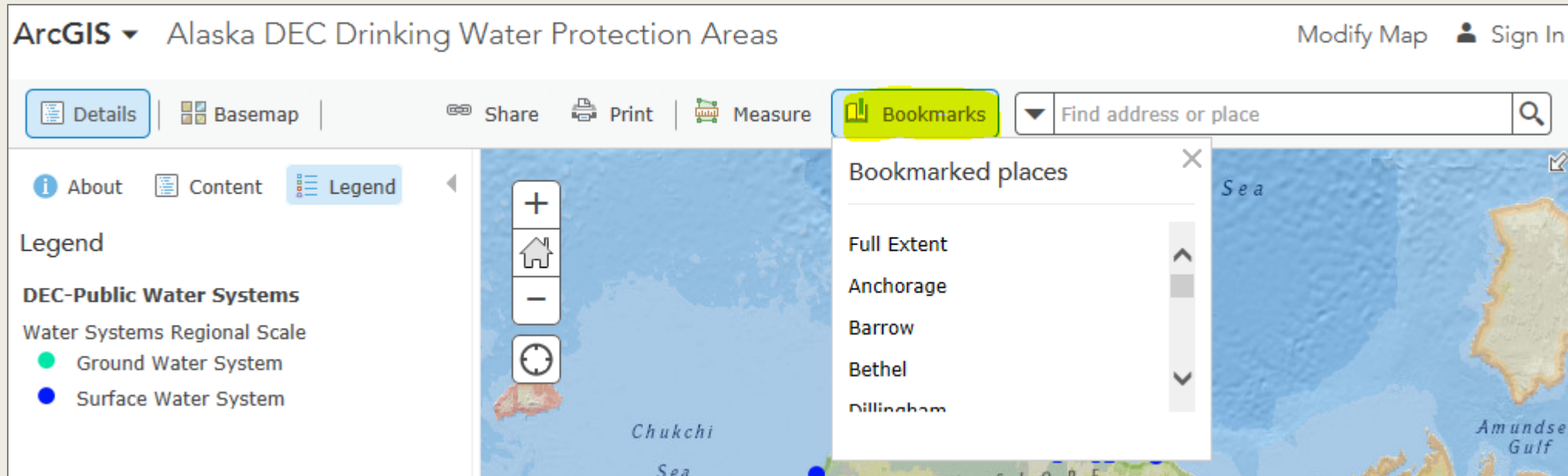


- ☒ National Geographic World Map



Searching Map

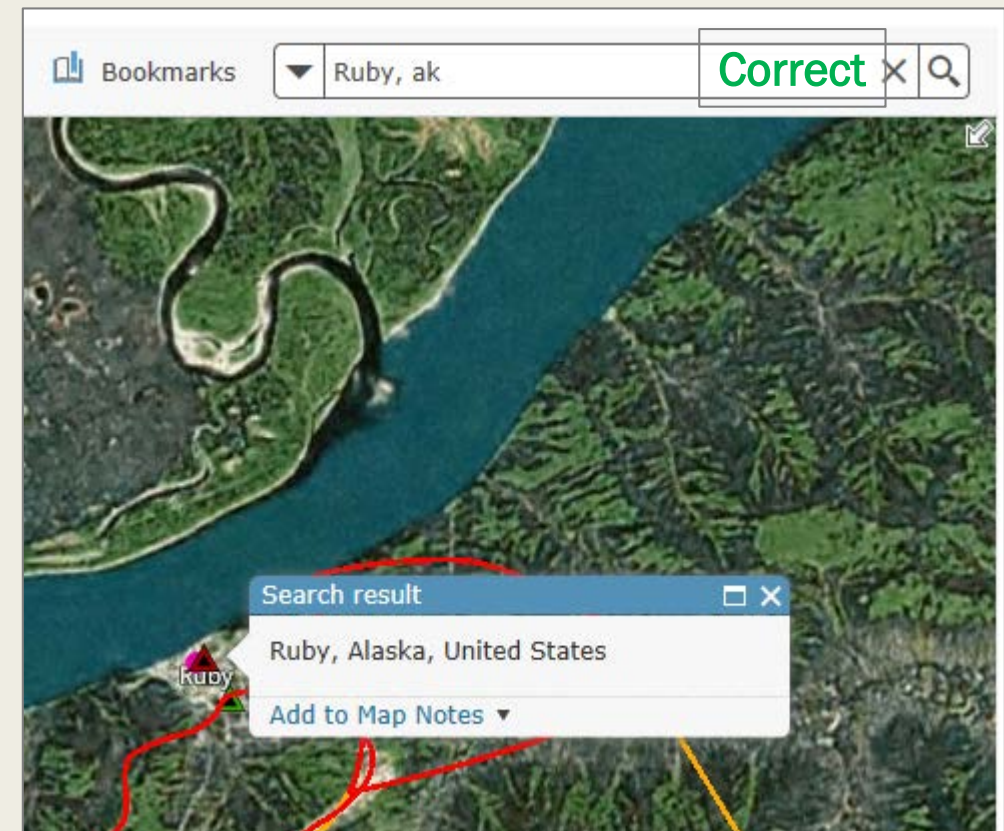
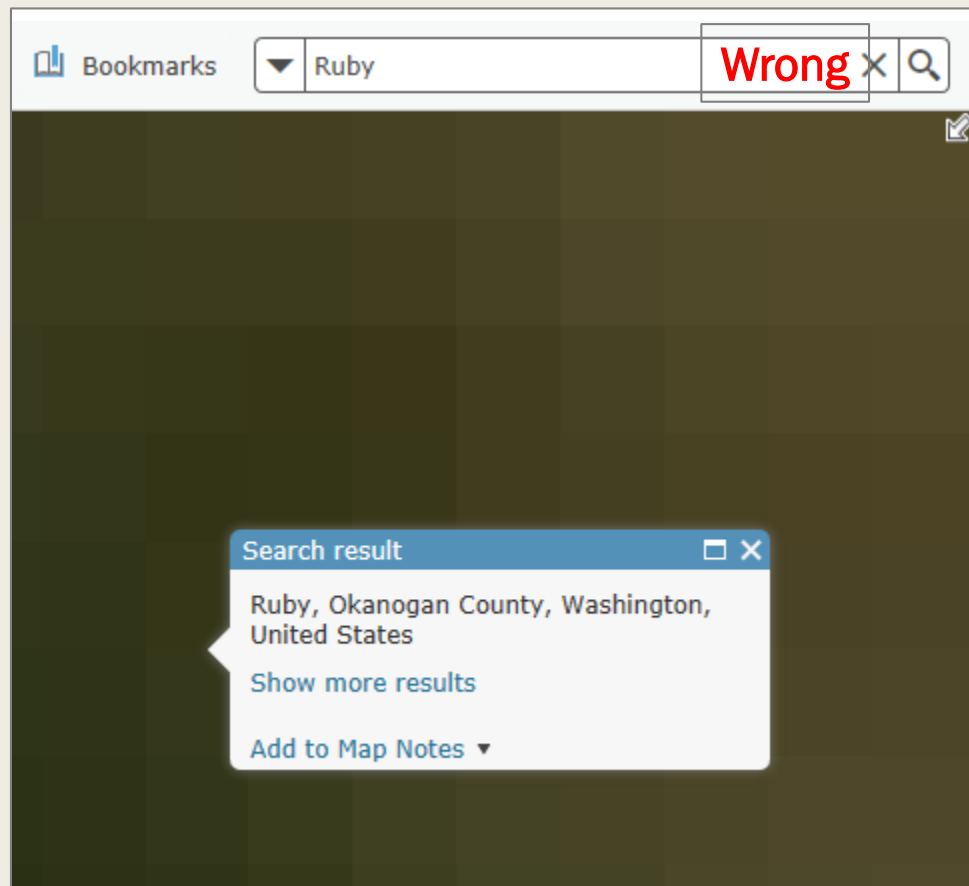
■ Searching: Using Bookmarks





Searching Map (cont'd.)

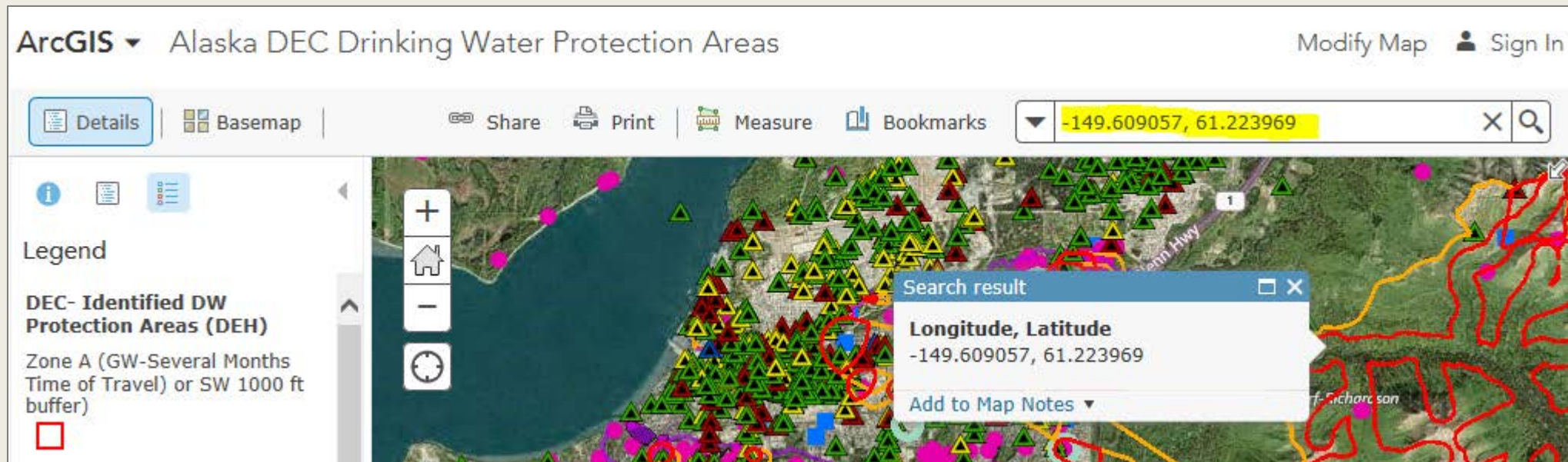
- Searching: By City
 - *Important* Include "AK" in search (searches entire globe)





Searching Map (cont'd.)

- Searching: By Location Coordinates
 - *Format: Decimal Degrees (ex. -149.609057, 61.223969)*
 - **Important:** Longitude first, including “negative” sign (unless west of the International Dateline, such as for Shemya)

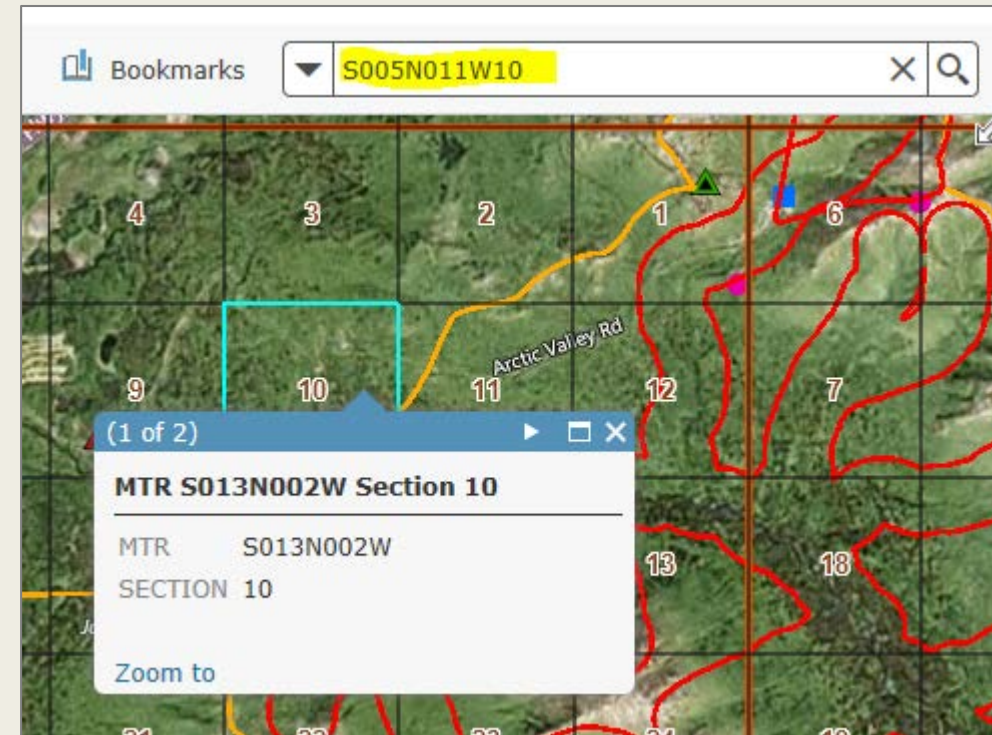




Searching Map (cont'd.)

- Searching: By PLSS in **MTRS** format (e.g. S013N002W10)
 - **M** = 1-letter meridian (ex. "S" = Seward Meridian)
 - **T** = 3-digit township + 1-letter cardinal direction (ex. "013N" = Township 13 North)
 - **R** = 3-digit range + 1-letter cardinal direction (ex. "002W" = Range 2 West)
 - **S** = 2-digit section (ex. "10" = Section 10)

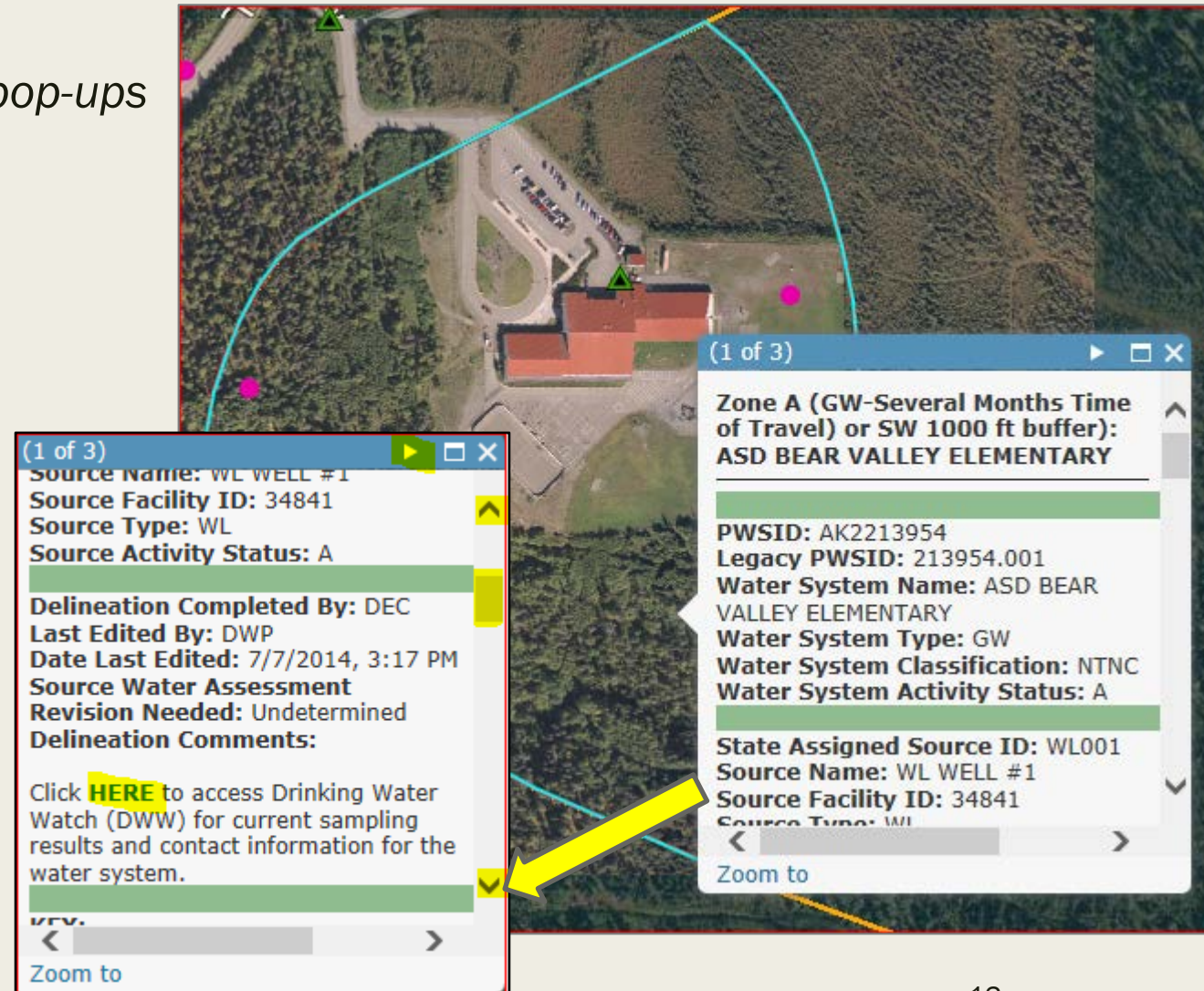
ex. S013N002W10





Pop-Ups

- Pop-Ups
 - Use page-through arrow for multiple pop-ups
 - Scroll down to see more pop-up info
- PWS info (e.g. AK2213954)
 - Key at bottom of pop-up
 - Classification: C = CWS, not Class C
 - Activity: A = Active.
 - This map only shows active PWSs.
 - Link to Drinking Water Watch (DWW)
 - For PWS Contact info
 - Can also directly access DWW
 - <http://dec.alaska.gov/DWW/>





Drinking Water Watch: PWS Contact Info

 **State of Alaska**

[myAlaska](#) [My Government](#) [Resident](#) [Business in Alaska](#) [Visiting Alaska](#) [State Employees](#)

 **Division of Environmental Health**
Drinking Water Program

search

☐ DEC ☒ State of Alaska

DEC > Drinking Water Watch > Water Systems > Water System Details

DRINKING WATER WATCH

WATER SYSTEM DETAILS

Water System Facilities	Source Water Assessment Results	Non-Coliform Samples/Results
Coliform/Microbial Sample Results	Source Water Assessment Web Map	Non-Coliform Samples/Results by Analyte
Coliform Sample Summary Results	Lead And Copper Sample Summary Results	Violations/Enforcement Actions
Sample Schedules	Site Visits	Milestones
		Current Monitoring Summary

SYSTEM

Water System No. :	AK2213954	Federal Type :	Non-Transient Non-Community
Water System Name :	ASD BEAR VALLEY ELEMENTARY	Primary Source :	GW
Principal County Served :	ANCHORAGE	Activity Date :	01-01-1997
Status :	A		

POINTS OF CONTACT

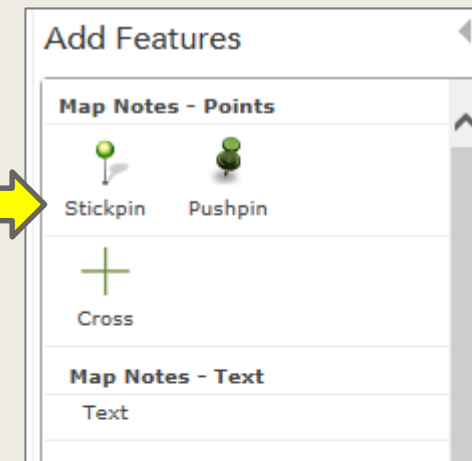
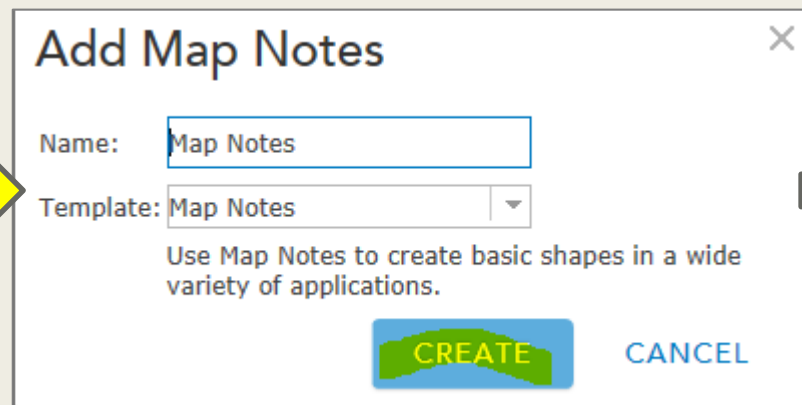
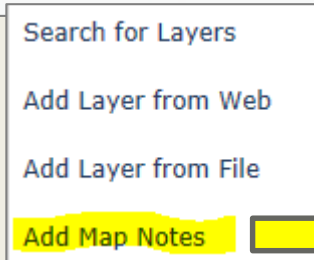
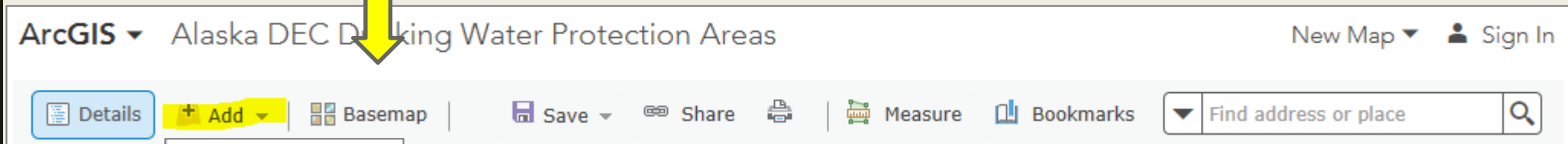
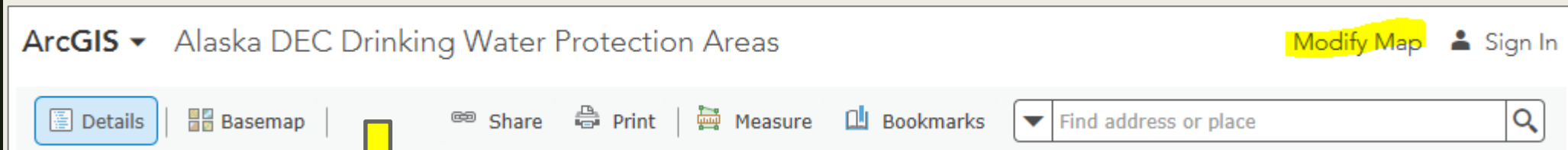
Name	Job Title	Type	Phone	Address	Email
LUNDVALL SIMONNE	ADMIN ASSISTANT	AC	907-348-5111	1301 Labar Road, ANCHORAGE	lundvall_simonne@asdk12.org



Adding Map Notes (graphics)

■ Modify Map

- Enables Map Notes tool for adding text, points, lines, areas, etc.
- **IMPORTANT:** Need an account in order to save/share changes





Printing Maps

- Default 'Print' button
 - No legend (*Not preferred method*)
- Screenshot method (*Preferred*)
 - Legends can be slightly modified

