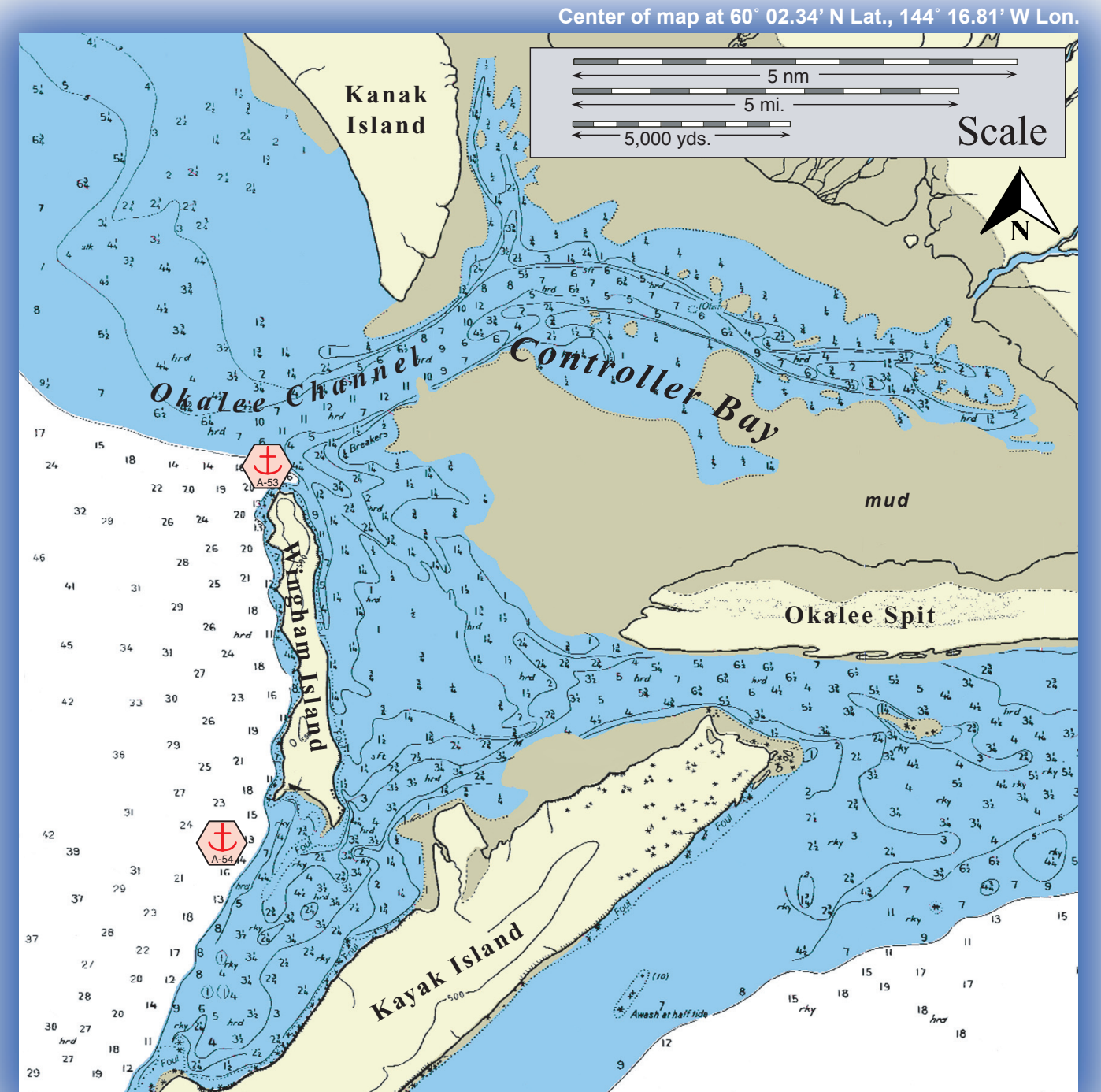


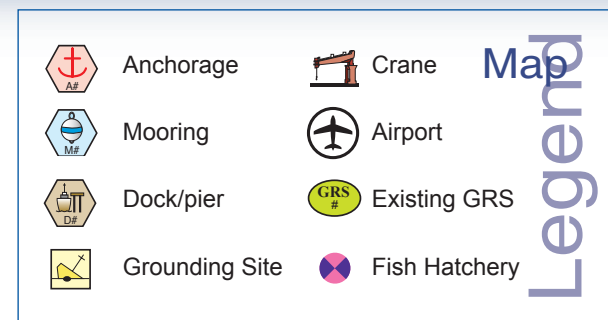
Looking southwest towards Wingham Island.

# Places of Refuge

## Potential Places of Refuge for Prince William Sound Subarea



This is not intended for navigational use.



## PWS PPOR Map 16

PPOR-16 Okalee Channel and Kayak Entrance Anchorages Physical and Operational Characteristics		
	A53 Okalee Channel Anchorage	A54 Kayak Entrance Anchorage
Maximum Vessel Size	Light draft, up to 20,000 Gross Tons	Light draft, up to 20,000 Gross Tons
Contact	N/A	
Navigational Approach	Approach from the E.	Approach from the E.
Minimum Water Depths	11 Fathoms in the swing area	13 Fathoms in the swing area
Maximum Water Depths	20 Fathoms in the swing area	19 Fathoms in the swing area
Maximum Vessel Draft	50 ft.	60 ft.
Swing Room/Dock Face	1150 ft.	2700 ft.
Bottom Type	Hard	Hard
Docks/Piers	Nearest-D25 Cordova City Dock-64nm.	
Moorings	Nearest- M30 SERV5 Buoys Port Etches-80nm.	
Anchorages	60° 03.36N 144° 23.92W	59° 59.07N 144° 24.91W
Firefighting Anchorages	Nearest Identified-A28 Port Etches Anchorage-80nm.	
Grounding Sites	Nearest Identified-G64 Constantine Harbor- 77 nm.	
Prevailing Winds	NE. (Oct-April), SW .(May-Sept.). Extreme winds are possible from the N.	
Currents	Negligible	
Tides	Mean High Water- 9.0 (Higher- 11.1) , Mean Low Water 1.4 (Lower -4.0)	
Sea Conditions	Exposed to swell from the W.	
Shelter from Severe Storms	Exposed to storms from the W.	
Fog	Fog can occur during all seasons.	
Ice	None	

PPOR-16 Wingham Island Stakeholders	
	Contact
U.S. Department of Agriculture, US Forest Service	CNF EVOS Liaison/ Subsistence Coordinator
Department of the Interior	Regional Environmental Officer
National Marine Fisheries Service/ NOAA	Protected Resources Biologist
State of Alaska Department of Natural Resources	Natural Resource Manager
Alaska Department of Fish & Game	Habitat Biologist
Prince William Sound Regional Citizens Advisory Council	Executive Director
For Native allotments, contact the Department of the Interior	Regional Environmental Assistant
For private landowners, contact the Alaska State Lands, Valdez Records Office	District Recorder

NOTE: Additional contact information is included in Part One of the SCP Prince William Sound Subarea Contingency Plan.

NOTE: Sensitive resource information can be found on other maps which can be accessed through the sensitive area section of the PWS Sub-Area Contingency Plan: <http://www.akrrt.org/PWSplan/PWStoc.shtml>.

PPOR-16 Okalee Channel and Kayak Entrance Site Considerations		
	A-53 Okalee Channel Anchorage	A-54 Kayak Entrance Anchorage
Human Health and Safety Considerations		
Communities – distances/population	Cordova: 76nm/pop. 2571	Cordova: 77nm/pop. 2571
Natural Resources Considerations		
Fish and Wildlife	Bald eagle and seabird nests, high waterfowl concentrations	
Threatened & Endangered Species	None noted	
Sensitive Areas	Northern Wingham Island	
Other Stakeholder Considerations		
Fisheries	Drift gill net: salmon	
Mariculture	None	
Subsistence	None noted	
Historic Properties	If suspected cultural artifacts are encountered, notify the State Historic Preservation Office and the land managers. Review adjacent GRS (if applicable) for information on historic properties.	
Tourism/Recreation	Occasional cruise ship	
Waterfront Public Facilities/Parks	None	
Waterfront Private Facilities	None	
Response and Salvage Resources Considerations		
Can Vessel Be Boomed?	Yes	
Geographic Response Strategies	PWS CRD-05	
Closest Alternative Place of Refuge	PPOR-06 D-25 Cordova City Dock: 76nm	PPOR-06 D-25 Cordova City Dock: 77nm