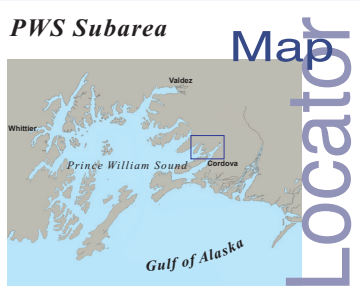


Places of Refuge

of

Locator Map

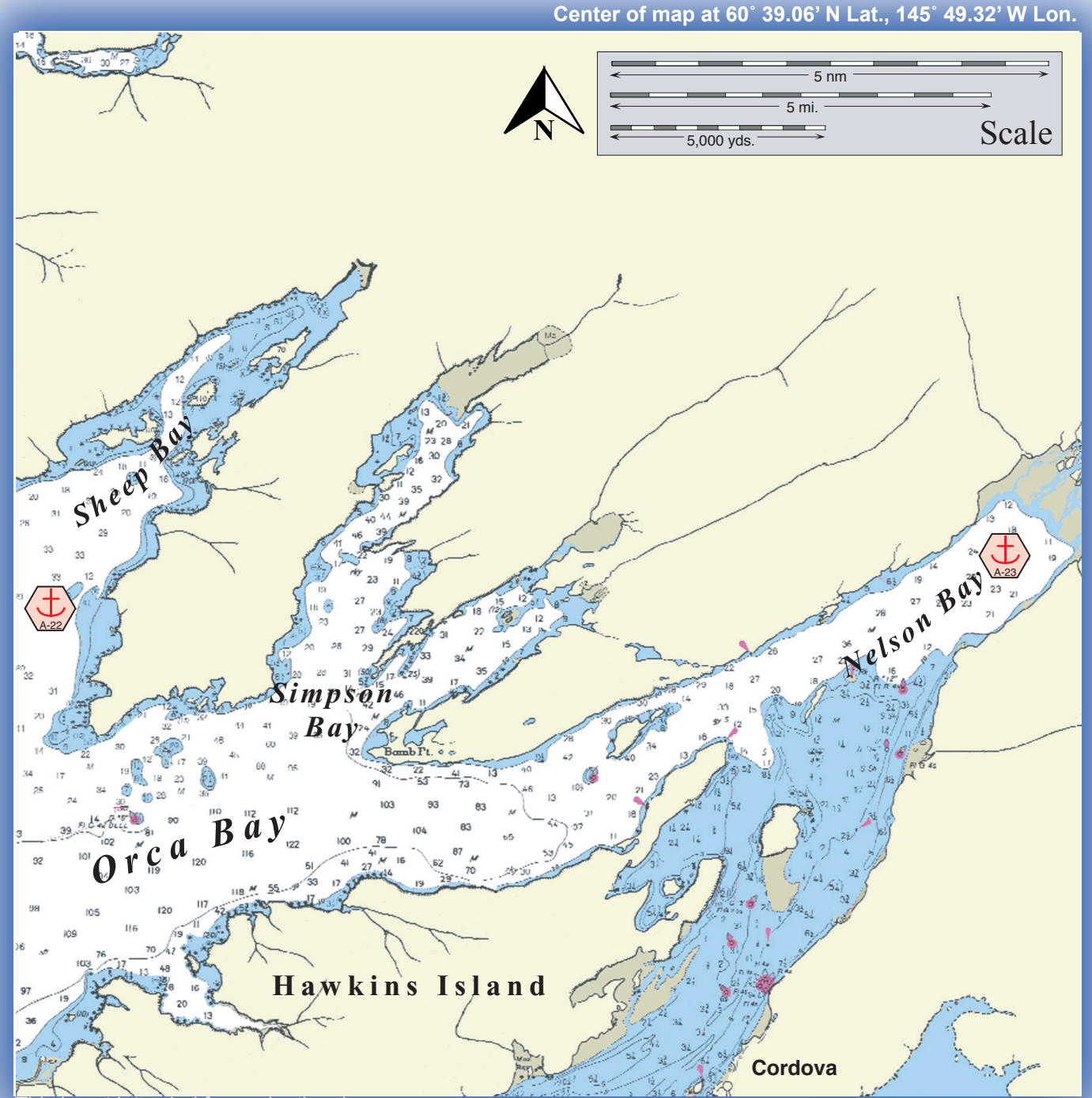


Sheep Bay looking northeast.

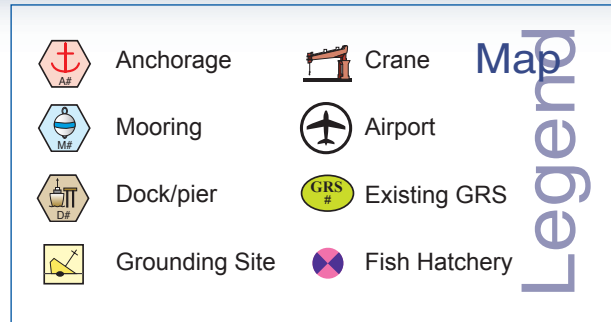


Nelson Bay looking northeast.

Potential Places of Refuge for Prince William Sound Subarea



This is not intended for navigational use.



PWS PPOR Map 05

Center of map at 60° 39.06' N Lat., 145° 49.32' W Lon.

PPOR-05 Sheep Bay and Nelson Bay Physical and Operational Characteristics		
	A22 Sheep Bay Anchorage	A23 Nelson Bay Anchorage
Maximum Vessel Size	Light draft, up to 20,000 Gross Tons	Light draft, up to 20,000 Gross Tons
Contact	N/A	
Navigational Approach	Approach from the S. & SW.	Approach from the SW.
Minimum Water Depths	11 Fathoms in the swing area	18 Fathoms in the swing area
Maximum Water Depth	36 Fathoms in the swing area	25 Fathoms in the swing area
Maximum Vessel Draft	50 ft.	50 ft.
Swing Room/Dock Face	3600 ft.	3000 ft.
Bottom Type	Mud	
Docks/Piers	Nearest D25 CordovaCity Dock-15 nm.	Nearest D25 CordovaCity Dock-7nm.
Moorings	Nearest M30 Port Etches-37 nm.	Nearest M30 Port Etches-47 nm.
Anchorage	60° 38.16N 146° 02.42W	60° 39.01N 145° 39.36W
Firefighting Anchorages	A22 Sheep Bay is an identified MFF anchorage	Nearest Identified- A22 Sheep Bay-14 nm.
Grounding Sites	G61 Red Head	
Prevailing Winds	NE (Oct-April), SW (May-Sept.)-strong winds may come from the E.	
Currents	Negligible	
Tides	Mean High Water 11.5 (Higher 12.5) , Mean Low Water 1.5 (Lower -5.0)-Cordova	
Sea Conditions	Exposed to SW. swell	Sheltered from extreme sea states
Shelter from Severe Storms	Exposed to SW. storms	Sheltered from severe storms
Fog	Fog can occur during all seasons.	
Ice	None	

PPOR-05 Sheep Bay and Nelson Bay Site Considerations		
	A-22 Sheep Bay Anchorage	A-23 Nelson Bay Anchorage
Human Health and Safety Considerations		
Communities – distances/population	Cordova- 17nm./ pop. 2571	Cordova- 7.5nm./ pop.2571
Natural Resources Considerations		
Fish and Wildlife	Bald eagle nests, salmon spawning, sea otter concentrations, waterfowl concentrations, harbor seals, sea bird colonies	
Threatened & Endangered Species	None	
Sensitive Areas	Upper Sheep Bay	No high priority sites
Other Stakeholder Considerations		
Fisheries	Salmon Purse Seine	Closed to commercial fishing
Mariculture	None	
Subsistence	Primarily seal harvest activities	
Historic Properties	If suspected cultural artifacts are encountered, notify the State Historic Preservation Office and the land managers. Review adjacent GRS (if applicable) for information on historic properties.	
Tourism/Recreation	High sport fishing and recreational use.	
Waterfront Public Facilities/Parks	EVOS Conservation Easements	
Waterfront Private Facilities	Private cabins are present.	
Response and Salvage Resources Considerations		
Can Vessel be Boomed?	Yes	
Geographic Response Strategies	PWS-NE11	None
Closest Alternative Place of Refuge	PPOR-05 A-23 Nelson Bay Anchorage: 15 nm	PPOR-05 A-22 Sheep Bay Anchorage: 15 nm

PPOR-05 Sheep Bay and Nelson Bay Stakeholders

	Contact
U.S. Department of Agriculture, US Forest Service	CNF EVOS Liaison/ Subsistence Coordinator
Department of the Interior	Regional Environmental Officer
National Marine Fisheries Service/ NOAA	Protected Resources Biologist
State of Alaska Department of Natural Resources	Natural Resource Manager
Alaska Department of Fish & Game	Habitat Biologist
Native Village of Eyak	President
City of Cordova	City Manager
Mental Health Trust Authority	Chairman
Eyak Corporation	Chief Executive Officer
Prince William Sound Regional Citizens Advisory Council	Executive Director
For Native allotments, contact the Department of the Interior	Regional Environmental Assistant
For private landowners, contact the Alaska State Lands, Cordova Records Office	District Recorder

NOTE: Additional contact information is included in Part One of the SCP Prince William Sound Subarea Contingency Plan.

NOTE: Sensitive resource information can be found on other maps which can be accessed through the sensitive area section of the PWS Sub-Area Contingency Plan: <http://www.akrrt.org/PWSplan/PWStoc.shtml>.