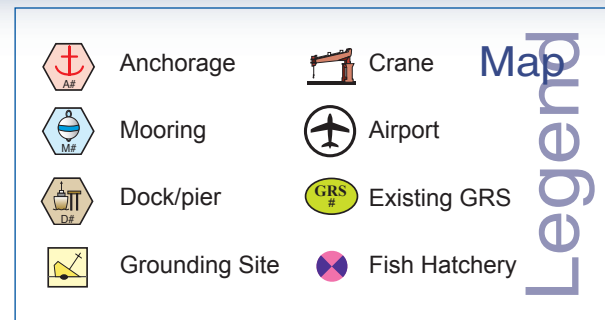
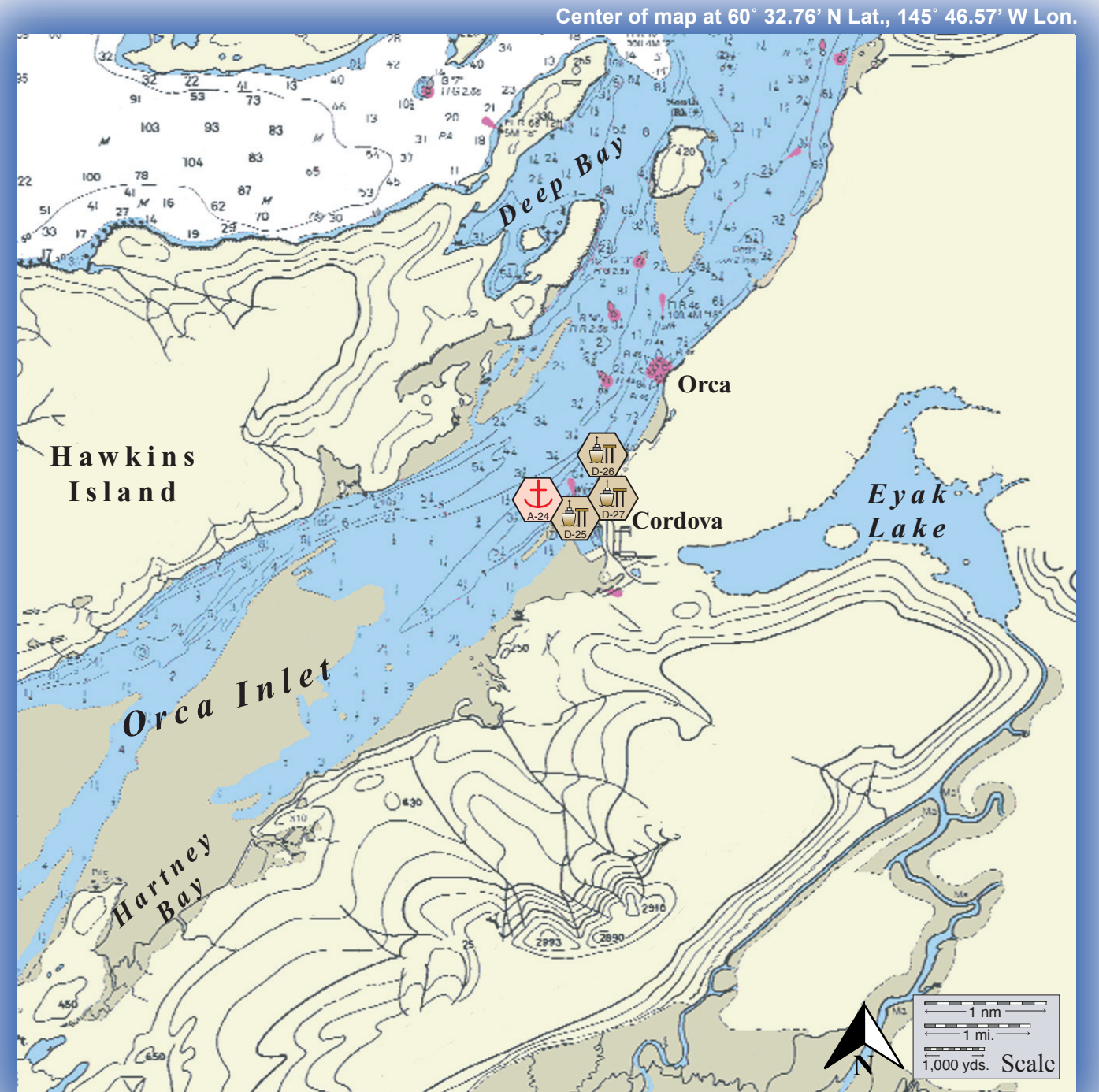


Cordova looking east.

# Places of Refuge

## Potential Places of Refuge for Prince William Sound Subarea



## PWS PPOR Map 06



PPOR-06 Cordova Area Physical and Operational Characteristics				
	D25 Cordova City Dock	D26 Cordova Municipal/Ferry Dock	D27 Cordova USCG/T-Dock	A24 Spike Island Anchorage
Maximum Vessel Size	Light draft, up to 20,000 Gross Tons			
Contact	Port Director/Harbor Master 907-424-6400			N/A
Navigational Approach	Approach via Orca Bay from the north.			
Minimum Water Depths	4 Fathoms at dock face	4 Fathoms at dock face	3.5 Fathoms at dock face	18 Fathoms on approach / 35 Fathoms in the swing area
Maximum Water Depths	N/A			44 Fathoms
Maximum Vessel Draft	20 ft.			65 ft.
Swing Room/Dock Face	300 ft.	408 ft.	263 ft.	550 ft.
Docks/Piers	60° 32.89N 145° 46.08W	60° 33.47N 145° 45.32W	60° 33.11N 145° 45.83W	Nearest-D25Cordova City Dock- .2 nm.
Moorings	Nearest-M30 Port Etches Moorage			
Anchorage	Nearest-A24 Spike Island Anchorage			60° 33.11N 145° 46.25W
Firefighting Anchorage	Nearest Identified-A22 Sheep Bay Anchorage			
Grounding Sites	Nearest Identified- G61 Red Head			
Bottom Type	N/A			Mud/Sand
Prevailing Winds	NE (Oct-April), SW (May-Sept.)			
Currents	1.0 knot-normal , 2.5 observed on flood			1 knot
Tides	Mean High Water- 11.5 (Higher- 12.5) , Mean Low Water- 1.5 (Lower- -5.0)			
Sea Conditions	Sheltered from extreme sea states.			
Shelter from Severe Storms	Sheltered from extreme storms.			
Fog	Fog is possible during all season.			
Ice	None			

PPOR-06 Cordova Area Stakeholders	
	Contact
U.S. Department of Agriculture, US Forest Service	CNF EVOS Liaison/ Subsistence Coordinator
Department of the Interior	Regional Environmental Officer
National Marine Fisheries Service/ NOAA	Protected Resources Biologist
State of Alaska Department of Natural Resources	Natural Resource Manager
Alaska Department of Fish & Game	Habitat Biologist
Native Village of Eyak	President
City of Cordova	City Manager
Mental Health Trust Authority	Resource Mgmt Chairman
Prince William Sound Regional Citizens Advisory Council	Executive Director
Eyak Corporation	Chief Executive Officer
For Native allotments, contact the Department of the Interior	Regional Environmental Assistant
For private landowners, contact the Alaska State Lands, Cordova Records Office	District Recorder

NOTE: Additional contact information is included in Part One of the SCP Prince William Sound Subarea Contingency Plan.

PPOR-06 Cordova Area Site Considerations				
	A-24 Spike Island Anchorage	D-25 Cordova City Docks	D-26 Cordova Municipal/Ferry Dock	D-27 Cordova USCG/ T-Dock
Human Health and Safety Considerations				
Communities – distances/population	Cordova 0.2nm./ pop. 2571	Cordova 0.0nm./ pop. 2571		
Natural Resources Considerations				
Fish and Wildlife	Bald eagle nests, spawning salmon, sea otter concentration, waterfowl concentration, shorebirds, harbor seal, seabird colonies			
Threatened & Endangered Species	None noted			
Sensitive Areas	Orca Inlet Mouth, Boswell Bay/ Snake Creek, Hartney Bay			
Other Stakeholder Considerations				
Fisheries	Area closed to commercial fishing			
Mariculture	Oyster farms at Windy Bay: 12 nm			
Subsistence	Fish, intertidal, and terrestrial mammals harvest activities			
Historic Properties	If suspected cultural artifacts are encountered, notify the State Historic Preservation Office and the land managers. Review adjacent GRS (if applicable) for information on historic properties.			
Tourism/Recreation	Hiking trails, sportfishing, cruise ships, excursion boats			
Waterfront Public Facilities/Parks	State Marine Parks: Canoe Passage, Hawkins Island, numerous public facilities in Cordova; EVOS Conservation Easement			
Waterfront Private Facilities	Private cabins, numerous private facilities in Cordova			
Response and Salvage Resources Considerations				
Can Vessel be Boomed?	Yes			
Geographic Response Strategies	PWS CRD-02, 06, 07			
Closest Alternative Places of Refuge	PPOR-05 A-23 Nelson Bay Anchorage: 8 nm			

NOTE: Sensitive resource information can be found on other maps which can be accessed through the sensitive area section of the PWS Sub-Area Contingency Plan: <http://www.akrrt.org/PWSplan/PWStoc.shtml>.