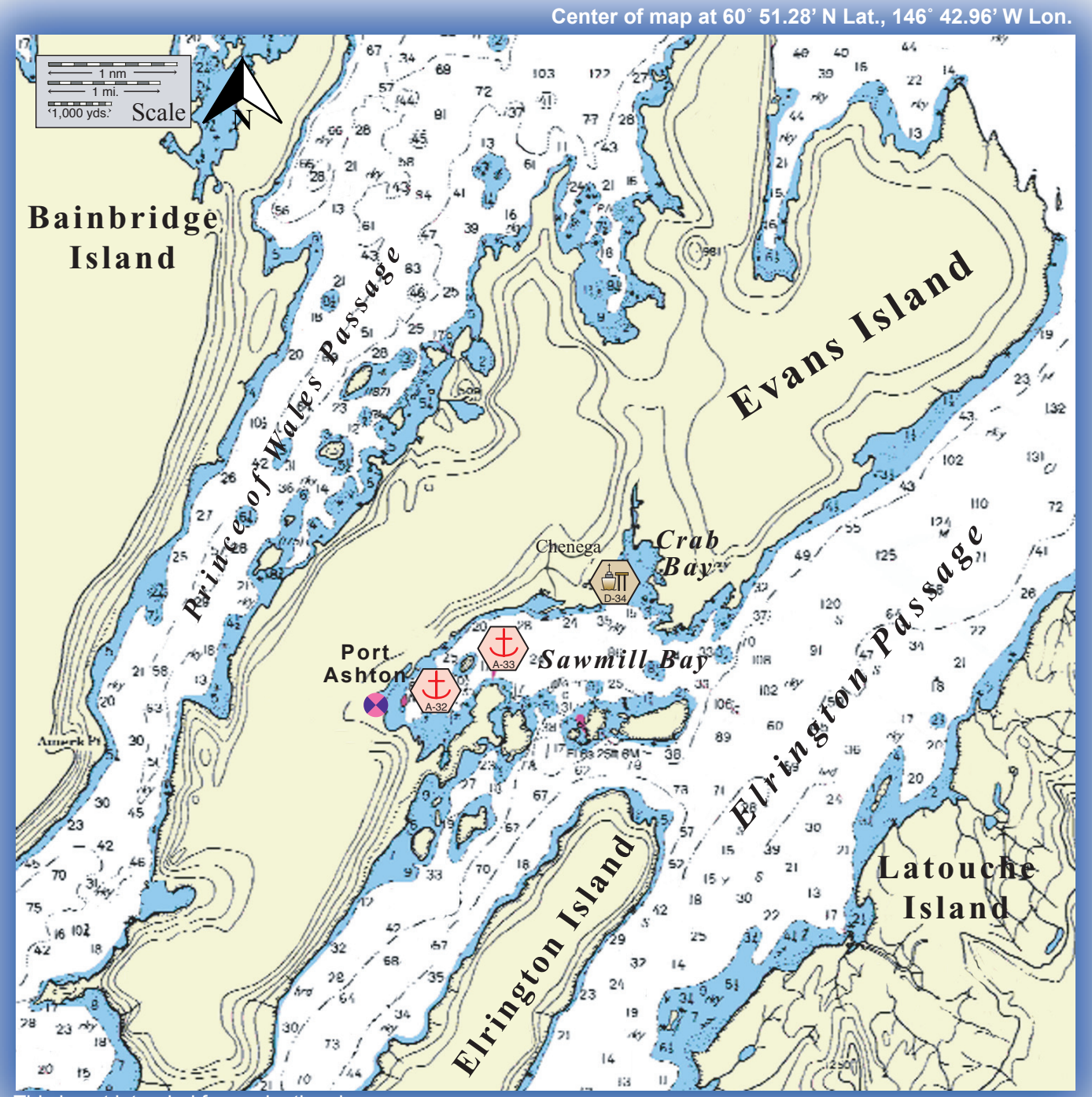


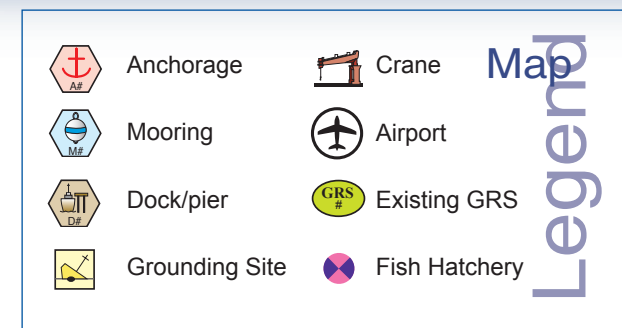
# Places of Refuge



Sawmill Bay looking east.



This is not intended for navigational use.



## PWS PPOR Map 09

Potential Places of Refuge for Prince William Sound Subarea

PPOR-09 Sawmill Bay and Chenega Dock Physical and Operational Characteristics			
	D34 Chenega Ferry Dock	A32 West Sawmill Bay Anchorage	A33 East Sawmill Bay Anchorage
Maximum Vessel Size	Light draft, up to 20,000 Gross Tons		
Contact	Chenega IRA-President- 907-573-5132	N/A	
Navigational Approach	Approach from the E.		
Minimum Water Depths	7 Fathoms at the dock face	6 Fathoms in the swing room	23 Fathoms in the swing room
Maximum Water Depths	N/A	33 Fathoms in the swing room	45 Fathoms in the swing room
Maximum Vessel Draft	40 ft.	25 ft.	60 ft.
Swing Room/Dock Face	300 ft.	875 ft.	750 ft.
Bottom Type	N/A	Rocky/Mud	Mud, Shells
Docks/Piers	60° 03.73N 148° 00.80W	Nearest-D34 Chenga Dock-2 nm.	Nearest- D34 Chenga Dock-1 nm.
Moorings	Nearest M30 Port Etches-51nm		
Anchorage	Nearest-A33 EastSawmill Bay-1 nm.	60° 03.19N 148° 03.17W	60° 03.50N 148° 02.23W
Firefighting Anchorages	Nearest identified-A31 Macleod Harbor-22 nm.		
Grounding Sites	Nearest identified-G64 Constantine Harbor-49 nm.		
Prevailing Winds	NE. (Oct-April), SW. (May-Sept.)		
Currents	Negligible		
Tides	Mean High Water 11.1(Higher 12.1) , Mean Low Water 1.5 (Lower -6.0) at Latouche		
Sea Conditions	Sheltered from extreme sea conditions		
Shelter from Severe Storms	Sheltered from extreme severe storms		
Fog	Fog can occur during any season		
Ice	None		

PPOR-09 Sawmill Bay and Chenega Dock Site Considerations			
	A-32 West Sawmill Bay Anchorage	A-33 East Sawmill Bay Anchorage	D-34 Chenega Ferry Dock
Human Health and Safety Considerations			
Communities – distances/population	Chenega Bay-2nm./pop. 35	Chenega Bay-1nm./pop. 35	Chenega Bay-0.0nm./pop. 35
Natural Resources Considerations			
Fish and Wildlife	Waterfowl concentration, bald eagle nests, spawning salmon, sea otters, seabirds, seals		
Threatened & Endangered Species	None noted		
Sensitive Areas	No high priority sites		
Other Stakeholder Considerations			
Fisheries	Purse seine - Salmon		
Mariculture	Armin F. Koernig Salmon Hatchery, Oyster Farms	Oyster farm	
Subsistence	Important subsistence area for Chenega Bay residents		
Historic Properties	If suspected cultural artifacts are encountered, notify the State Historic Preservation Office and the land managers. Review adjacent GRS (if applicable) for information on historic properties.		
Tourism/Recreation	None noted		
Public Facilities/Parks	State Marine Park: Horseshoe Bay, Latouche Island: 4nm		
Private Facilities	Private facilities exist within Chenega Bay		
Response and Salvage Resources Considerations			
Can Vessel be Boomed?	Yes		
Geographic Response Strategies	Hatchery protection plan may be found in the Prince William Sound Tanker Contingency Plan		
Closest Alternative Place of Refuge	PPOR-09 D-34 Chenega Ferry Dock: 1nm	PPOR-09 A-32 West Sawmill Bay Anchorage: 1nm	

**PPOR-09 Sawmill Bay and Chenega Dock Stakeholders**

	Contact
U.S. Department of Agriculture, US Forest Service	CNF EVOS Liaison/ Subsistence Coordinator
Department of the Interior	Regional Environmental Officer
National Marine Fisheries Service/ NOAA	Protected Resources Biologist
State of Alaska Department of Natural Resources	Natural Resource Manager
Alaska Department of Fish & Game	Habitat Biologist
Chenega IRA Council	Environmental Department
Prince William Sound Regional Citizens Advisory Council	Executive Director
Alyeska Pipeline Service Company	SERVS Duty Officer
Prince William Sound Aquaculture Corporation	Chairman
For Native allotments, contact the Department of the Interior	Regional Environmental Assistant
For private landowners, contact the Alaska State Lands, Valdez Recorders Office	District Recorder

NOTE: Additional contact information is included in Part One of the SCP Prince William Sound Subarea Contingency Plan.

NOTE: Sensitive resource information can be found on other maps which can be accessed through the sensitive area section of the PWS Sub-Area Contingency Plan: <http://www.akrrt.org/PWSplan/PWStoc.shtml>.