



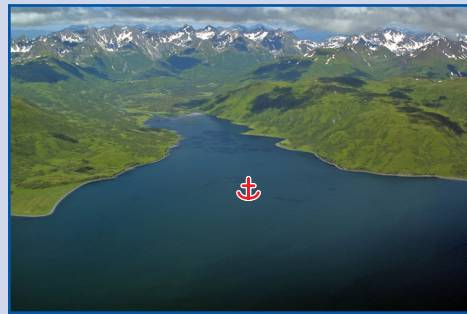
84-S Port Hobron from the Northeast.



16-D Kiliuda Bay anchorage from the Southeast.



17-D Santa Flavia Bay anchorage from the South.



20-D Barling Bay from the Southeast.



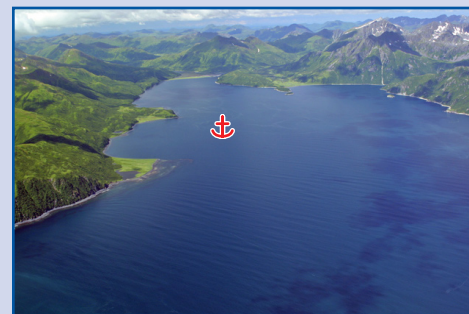
18-D Tanginak anchorage from the North.



21-D Rolling Bay from the Southwest.



PPOR site 19-D & Old Harbor small boat harbor from the Southeast.



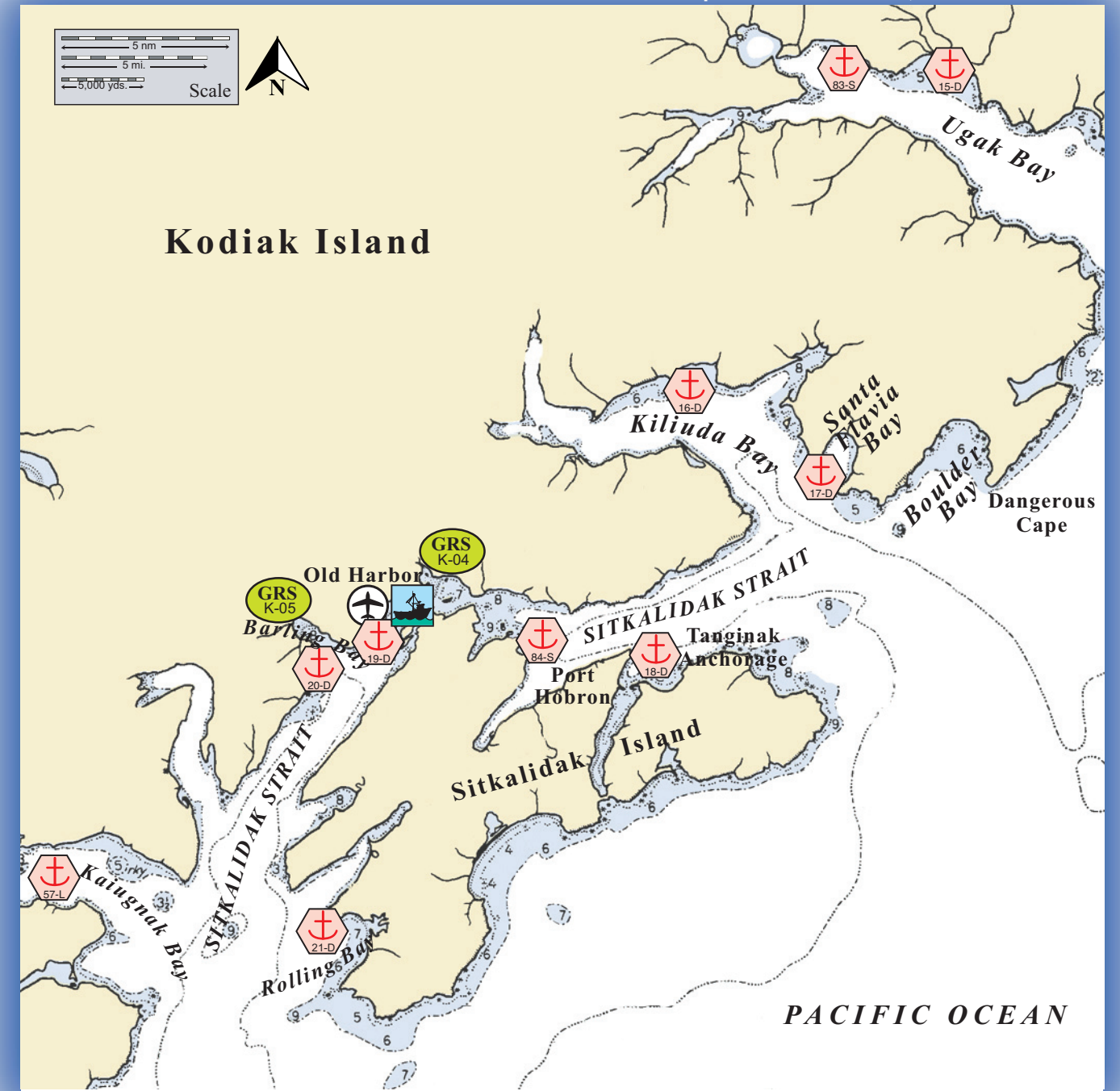
57-L Kaiugnak Bay from the Southeast.



15-D & 83-S anchorages in Ugak Bay from the Southeast.

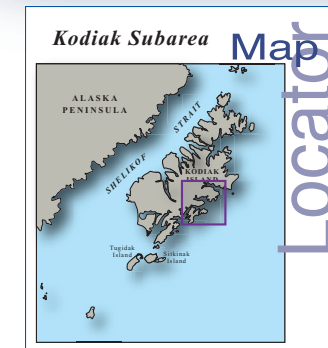
Potential Places of Refuge for Kodiak Island Subarea

Center of map at 57° 14.90' N Lat., 153° 07.60' W Lon.



This is not intended for navigational use.

Soundings in fathoms



| | | | |
|--|-----------|--|-------------------|
| | Anchorage | | Existing GRS |
| | Mooring | | Fish Hatchery |
| | Dock/pier | | Private Cabins |
| | Crane | | Public Use Cabins |
| | Airport | | Boat Harbor |

Kodiak PPOR Map 05

USGS 1:250K Quadrangle Map
Reference - Kodiak

| Kodiak PPOR-05 Site Considerations – Southeast Kodiak Island Area | | | | | | | | | | | |
|---|---|------------------------------------|-------------------------------|--|---|--|--|--|--------------------------------|-----------------------------|--|
| Name | Ugak Bay | Kiliuda Bay | Santa Flavia Bay | Tanginak Anchorage | Old Harbor | Barling Bay | Rolling Bay | Kaiugnak Bay | Ugak Bay | Port Hobron | |
| ID Number (See Key Below) | 15-D | 16-D | 17-D | 18-D | 19-D | 20-D | 21-D | 57-L | 83-S | 84-S | |
| Human Health & Safety | | | | | | | | | | | |
| Communities – distances-nm | Old Harbor-38, Kodiak-43 | Old Harbor-21, Kodiak-58 | Old Harbor-17, Kodiak-55 | Old Harbor-10, Kodiak-56 | Old Harbor-0.5 ,Kodiak-95 | Old Harbor-2 ,Kodiak-95 | Old Harbor-13 ,Kodiak-77 | Old Harbor-18 ,Kodiak-85 | Old Harbor-40 ,Kodiak-42 | Old Harbor-8 ,Kodiak-59 | |
| Natural Resource Considerations | | | | | | | | | | | |
| Wildlife | Salmon & herring spawning, sea lions, harbor seals, otters, seabird nesting, waterfowl concentrations, eagle nesting, whale migration | | | Salmon spawning, waterfowl concentrations, whale migration | Harbor seals, salmon spawning, eagle nesting, whale migration | Salmon-intertidal spawning, sea lions, harbor seals, otters, seabird nesting, waterfowl concentrations, eagle nesting, whale migration | Salmon & herring spawning, harbor seals, seabird nesting, waterfowl concentrations, eagle nesting, whale migration | Salmon spawning, harbor seals, eagle nesting, whale migration | | | |
| Threatened & Endangered Species | Sea lion haulout in the immediate vicinity | Sea lions throughout the area | | | | | Sea lion haulout in the immediate vicinity | | Sea lions throughout the area | | |
| Environmentally Sensitive Areas | Sea lion haulout at Cape Barnabas and Puffin Island | | | | | | | | | | |
| Other Stakeholder Considerations | | | | | | | | | | | |
| Fisheries | Salmon, crab, herring, groundfish | | | | | | | | | | |
| Historic Properties | If suspected cultural artifacts are encountered, notify the State Historic Preservation Office and the land managers. Review adjacent GRS (if applicable) for information on historic properties. | | | | | | | | | | |
| Mariculture | None | | | | | | | | | | |
| Tourism/Recreation | High recreational use area- sport fishing, kayaking, anchorage, excursion boats | None | | | High recreational use area- sport fishing, kayaking, anchorage, excursion boats | | | | None | | |
| Subsistence | Salmon, crab, intertidal harvest, marine mammals | | | | | | | | | | |
| Waterfront Public Facilities/Parks | Pasagshak State Recreation Area | None | | | Old Harbor Small Boat Harbor | None | | | | | |
| Waterfront Private Facilities | Alaska Aerospace Development Corp. has extensive facilities at Narrow Cape | None | | | | | | Alaska Aerospace Development Corp. has extensive facilities at Narrow Cape | None | | |
| Response and Salvage Resource Considerations | | | | | | | | | | | |
| Ability to Boom Vessel | Weather dependent | | | | Yes | | | | | | |
| Geographic Response Strategies | None | | | | K-04 Midway, K-05 Barling Bay | | | None | | | |
| Closest Alternative Places of Refuge (same sized vessel) | PPOR 05-17-D Santa Flavia Bay:24.5nm | PPOR 05-17-D Santa Flavia Bay: 5nm | PPOR 05-16-D Kiliuda Bay: 5nm | PPOR 05-17-D Santa Flavia Bay: 8.25nm | PPOR 05-20-D Barling Bay: 1nm | PPOR 05-19-D Old Harbor: 1nm | PPOR 05-20-D Barling Bay: 11nm | PPOR 05-21-D Rolling Bay: 9nm | PPOR 05-84-S Port Hobron: 35nm | PPOR 05-84-S Ugak Bay: 35nm | |

| Site ID Number and Vessel Size Classification | | Kodiak PPOR-05 Physical and Operational Characteristics – Southeast Kodiak Island Area | | | | | | | | | | |
|---|--|--|--|--------------------------|------------------------------|----------------------------------|---|--------------------------|----------------------------------|--------------------------------------|---|-------------------------------|
| D = Deep Draft Vessel, greater than 20,000 GT | | Name | Ugak Bay | Kiliuda Bay | Santa Flavia Bay | Tanginak Anchorage | Old Harbor | Barling Bay | Rolling Bay | Kaiugnak Bay | Ugak Bay | Port Hobron |
| L = Light Draft Vessel, up to 20,000 GT | | ID Number | 15-D | 16-D | 17-D | 18-D | 19-D | 20-D | 21-D | 57-L | 83-S | 84-S |
| S = Shallow Draft Vessel, 300 GT and less | | Anchorage Locations | 57°28.84'N 152°45.35'W | 57°19.13'N 152°59.99'W | 57°17.06'N 152°52.07'W | 57°11.15'N 153°02.05'W | 57°10.90'N 153°18.85'W | 57°11.12'N 153°21.14'W | 57°01.95'N 153°21.57'W | 57°03.86'N 153°39.47'W | 57°28.33'N 152°50.10'W | 57°10.08'N 153°09.60'W |
| | | Mooring Locations | Nearest PPOR 04-12-L Womens Bay-USCG Moorage | | | | | | | | | |
| | | Docks/Piers | Nearest PPOR 04-52-L Kodiak Cargo Terminal- 30ft. max vessel draft | | | | | | | | | |
| | | Maximum Vessel Size | Deep draft, greater than 20,000 Gross Tons | | | | | | | Light draft, up to 20,000 Gross Tons | Shallow draft, 300 Gross Tons and less | |
| | | Type of Berthing | Anchorage | | | | | | | | | |
| | | Contact | N/A | | | | | | | | | |
| | | Navigational Approach | Approach from SE | | Approach from S,NE | Approach from E | Approach from SW | | Approach from the SW,NW | Approach from E | Approach from SE | Approach from N |
| | | Minimum Water Depths | 11 Fathoms in swing area | 14 Fathoms in swing area | 14 Fathoms in swing area | 18 Fathoms in swing area | 17 Fathoms in swing area | 12 Fathoms in swing area | 12 Fathoms in swing area | 13 Fathoms in swing area | 15 Fathoms in swing area | 12 Fathoms in swing area |
| | | Maximum Water Depth | 16 Fathoms in swing area | 38 Fathoms in swing area | 12 Fathoms in the swing area | 53 Fathoms in swing area | 40 Fathoms in swing area | 40 Fathoms in swing area | 18 Fathoms in swing area | 35 Fathoms in swing area | 20 Fathoms in swing area | 20 Fathoms in swing area |
| | | Maximum Vessel Draft | 60 ft | 60 ft. | 60 ft. | 60 ft. | 60 ft. | 60 ft. | 60 ft. | 60 ft. | 30 ft. | 30 ft. |
| | | Swing Room/Dock Face | 3600 ft. | 3000 ft. | 2400 ft. | 2400 ft. | 3000 ft. | 2400 ft. | 3000 ft. | 2400 ft. | 1200 ft. | 1400 ft. |
| | | Bottom Type | Volcano ash | Mud | Sand | Mud | | Mud, gravel | Rocky | Mud, gravel | Rocky | Sand, gravel |
| | | Prevailing Winds | Variable in direction and velocity, strong winds occur throughout the area | | | | | | | | | |
| | | Currents | Currents are negligible | | | | | | | | | |
| | | Tides | Mean High Water-7.6 (Higher- 8.3) , Mean Low Water- 1.2 (Lower- -4.0) | | | | Mean High Water-7.7 (Higher- 8.3) , Mean Low Water- 1.2 (Lower- -4.0) | | | | Mean High Water-7.6 (Higher- 8.3) , Mean Low Water- 1.2 (Lower- -4.0) | |
| | | Sea Conditions | Exposed to swell from the SE | | Exposed to swell from the S | Exposed to swell from the E,NE | Exposed to swell from the SW | | Exposed to swell from the S,SW | Exposed to swell from the E | Exposed to swell from the S | Exposed to swell from the NE |
| | | Shelter from Severe Storms | Exposed to storms from the SE | | Exposed to storms from the S | Exposed to storms from the E, NE | Exposed to storms from the SW | | Exposed to storms from the S, SW | Exposed to storms from the E | Exposed to storms from the S | Exposed to storms from the NE |
| | | Fog | Fog can occur during all seasons. | | | | | | | | | |
| Kodiak PPOR-05 Southeast Kodiak Island Area Stakeholders | | | | | | | | | | | | |
| <i>Landowner (yr-2006)</i> | <i>Contact</i> | | | | | | | | | | | |
| Alaska State Parks | Kodiak District Ranger | | | | | | | | | | | |
| Alaska Department of Natural Resources | Natural Resource Manager | | | | | | | | | | | |
| Kodiak Island Borough | Borough Manager | | | | | | | | | | | |
| Kodiak National Wildlife Refuge | Dept. of the Interior-Regional Environmental Officer | | | | | | | | | | | |
| Old Harbor Native Corporation | Chief Executive Officer | | | | | | | | | | | |
| Private Landowners-contact Alaska State Lands Recorder Office | Kodiak District Recorder | | | | | | | | | | | |
| 27 Native Allotments | Dept. of the Interior-Regional Environmental Officer | | | | | | | | | | | |

NOTE: Sensitive resource information can be found on other maps which can be accessed through the sensitive area section of the Kodiak Sub-Area Contingency Plan: <http://www.akrrt.org/kodiakplan/kodiakplantoc.shtml>