



94-S Ninigiak Island from the East.



34-D Swikshak Bay from the East.



36-D Devil's Cove and Kukak Bay from the Southwest.



94-S & 35-D Ninigiak Island, Halo Bay and Cape Nukshak.



36-D Devil's Cove and Kukak Bay from the Northeast.

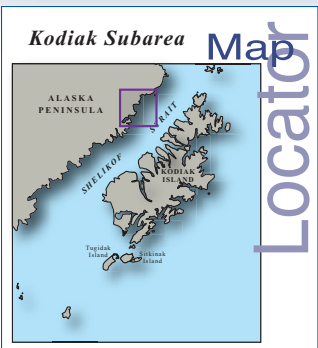
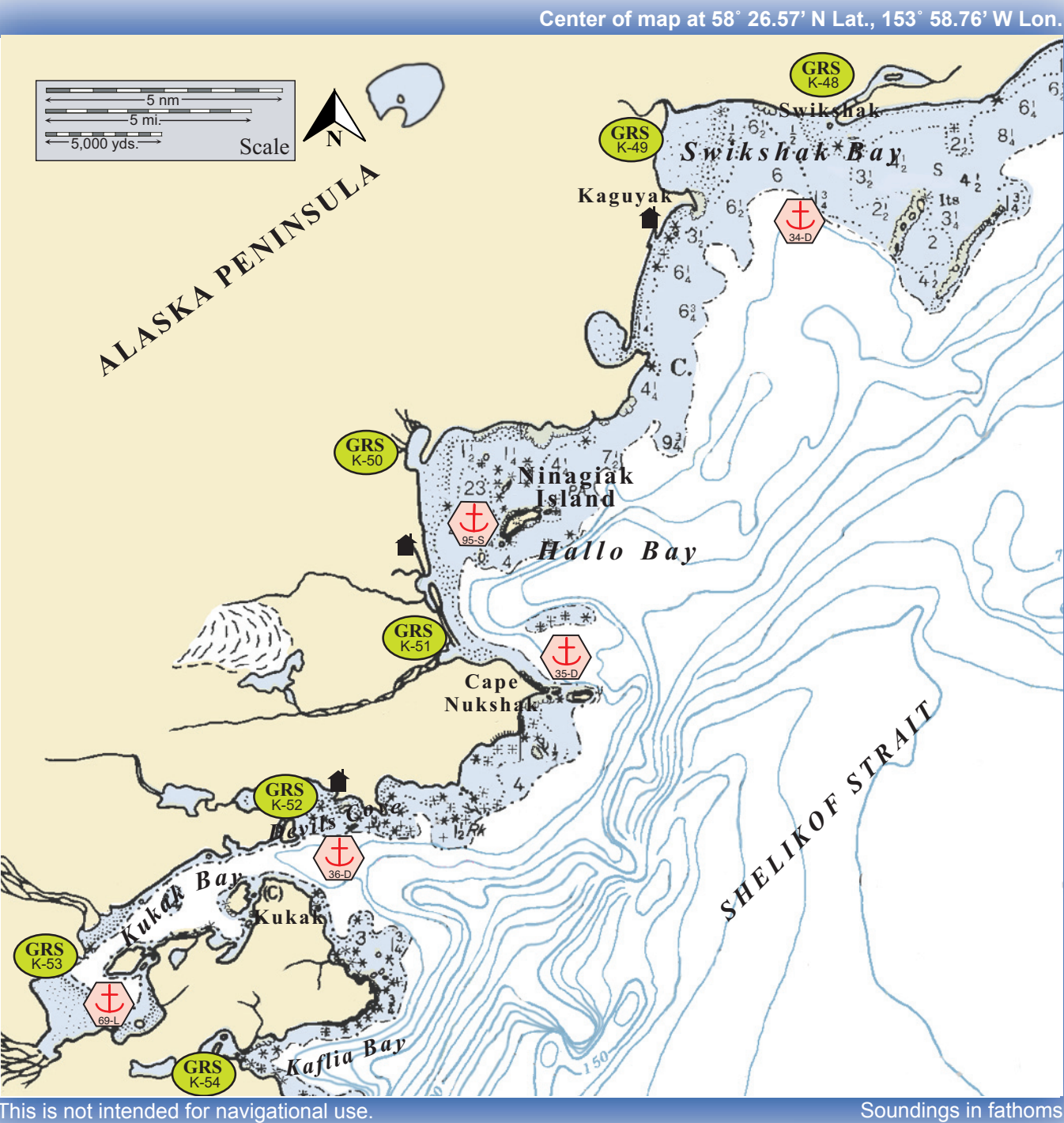


69-L Kukak Bay from the Northeast.



69-L the back of Kukak Bay from the East.

Potential Places of Refuge for Kodiak Island Subarea



	Anchorage		Existing GRS
	Mooring		Fish Hatchery
	Dock/pier		Private Cabins
	Crane		Public Use Cabins
	Airport		Boat Harbor

Kodiak PPOR Map 10

USGS 1:250K Quadrangle Map
Reference - Afognak & Mt. Katmai

Kodiak PPOR-10 Site Considerations – Northern Mainland Area					
Name	Swikshak Bay	Hallo Bay/Cape Nukshak	Kukak Point	Kukak Bay	Ninagiak Island
ID Number (See Key Below)	34-D	35-D	36-D	69-L	95-S
Human Health & Safety					
Communities – distances-nm	Port Lions-60, Kodiak-67	Port Lions-53, Kodiak-73	Port Lions-53, Kodiak-73	Port Lions-55, Kodiak-75	Port Lions-53, Kodiak-73
Natural Resource Considerations					
Wildlife	Sea lions, harbor seals, otters, salmon spawning, seabird nesting, waterfowl concentrations, eagle nesting, intertidal, bears		Sea lions, harbor seals, otters, salmon & herring spawning, seabird nesting, waterfowl concentrations, eagle nesting, bears		
Threatened & Endangered Species	Sea lions are present in the area, but no haulouts are designated in the immediate areas				
Environmentally Sensitive Areas	All sites are designated as Environmentally Sensitive Areas				
Other Stakeholder Considerations					
Fisheries	Salmon, herring, crab, groundfish				
Historic Properties	If suspected cultural artifacts are encountered, notify the State Historic Preservation Office and the land managers. Review adjacent GRS (if applicable) for information on historic properties.				
Mariculture	None				
Subsistence	Intertidal harvesting		None		
Tourism/Recreation	High recreational use area- sport fishing, anchorage, excursion boats, wildlife viewing				
Waterfront Public Facilities/Parks	Katmai National Park & Preserve/ no facilities - designated wilderness				
Waterfront Private Facilities	None	Hallo Bay Wilderness Lodge	Kukak Bay Lodge	Kukak Bay Lodge	Hallo Bay Wilderness Lodge
Response and Salvage Resource Considerations					
Ability to Boom Vessel	Weather dependent			Yes	Weather dependent
Geographic Response Strategies	K-48Swikshak Lagoon,K-49 Big River	K-50 Ninagiak River,K-51Middle&HalloCreeks	K-52 Devils Cove,K-53 Kukak Bay	K-52 Devils Cove,K-53 Kukak Bay	K-50Ninagiak River,K-51Middle&HalloCreeks
Closest Alternative Places of Refuge (same sized vessel)	PPOR 10-35-D Hallo Bay/Cape Nukshak-10nm	PPOR 10-36-D Kukak Point-9nm	PPOR 10-35-D Hallo Bay/Cape Nukshak-9nm	PPOR 11-70-L Missak Bay-34nm	PPOR 11-96-S Russian Anchorage-28nm

Site ID Number and Vessel Size Classification
D = Deep Draft Vessel, greater than 20,000 GT
L = Light Draft Vessel, up to 20,000 GT
S = Shallow Draft Vessel, 300 GT and less

Kodiak PPOR-10 Physical and Operational Characteristics – Northern Mainland Area					
Name	Swikshak Bay	Hallo Bay/Cape Nukshak	Kukak Point	Kukak Bay	Ninagiak Island
ID Number	34-D	35-D	36-D	69-L	95-S
Anchorage Locations	58°32.74'N 153°48.02'W	58°24.29'N 153°58.39'W	58°20.00'N 154°07.44'W	58°16.70'N 154°17.48'W	58°27.47'N 154°01.57'W
Mooring Locations	Nearest PPOR 02-44-L Kazakof Bay-1 Moorage				
Docks/Piers	Nearest PPOR 08-90-S Port Bailey Cannery-10ft. max vessel draft at MLLW				
Maximum Vessel Size	Deep draft, greater than 20,000 Gross Tons			Light draft, up to 20,000 Gross Tons	Shallow draft, 300 Gross Tons and less
Type of Berthing	Anchorage				
Contact	N/A				
Navigational Approach	Approach from S	Approach from E		From E. into Kukak Bay Approach anchorage from NW	Approach from S
Minimum Water Depths	11 Fathoms in swing area	19 Fathoms in swing area	13 Fathoms in swing area	15 Fathoms on approach	5 Fathoms on approach
Maximum Water Depth	21 Fathoms in swing area	46 Fathoms in swing area	41 Fathoms in swing area	23 Fathoms in swing area	30 Fathoms in swing area
Maximum Vessel Draft	60 ft			25 ft.	
Swing Room	5000 ft.	3000 ft.	2400 ft.	2400 ft.	1200 ft.
Bottom Type	Mud		Volcanic ash, shells	Mud	
Prevailing Winds	Variable in direction and velocity, strong winds occur throughout the area				
Currents	Alaska Coastal Current runs SE down Shelikof Strait				
Tides	Mean High Water-12.5 (Higher-13.3) , Mean Low Water- 1.4 (Lower- -4.0)				
Sea Conditions	Exposed to swell from the S,E,NE	Exposed to swell from the SE,E,NE	Exposed to swell from the E,SE	Sheltered	Exposed to swell from the NE,SE
Shelter from Severe Storms	Sheltered from storms from the N,W	Exposed to storms from the SE,E,NE	Exposed to storms from the E,SE	Sheltered	Exposed to storms from the SE,NE
Fog	Fog can occur during all seasons.				

Kodiak PPOR-10 Northern Mainland Area StakeHolders	
Landowner (yr-2006)	Contact
Katmai National Park & Preserve	Dept. of the Interior-Regional Environmental Officer