



Kazakof Bay PPOR sites 77-S, 78-S and 43-46-L viewed from the Southeast.



Kazakof Bay PPOR sites 77-S, 78-S and 43-46-L viewed from the Southeast.



75-S, 76-S Marmot Strait from the North.



42-L King Cove from the Southeast.

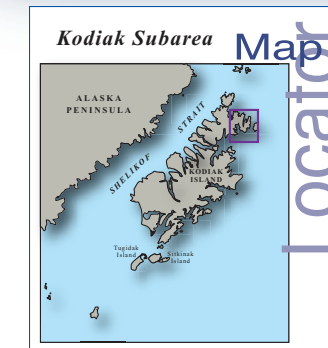
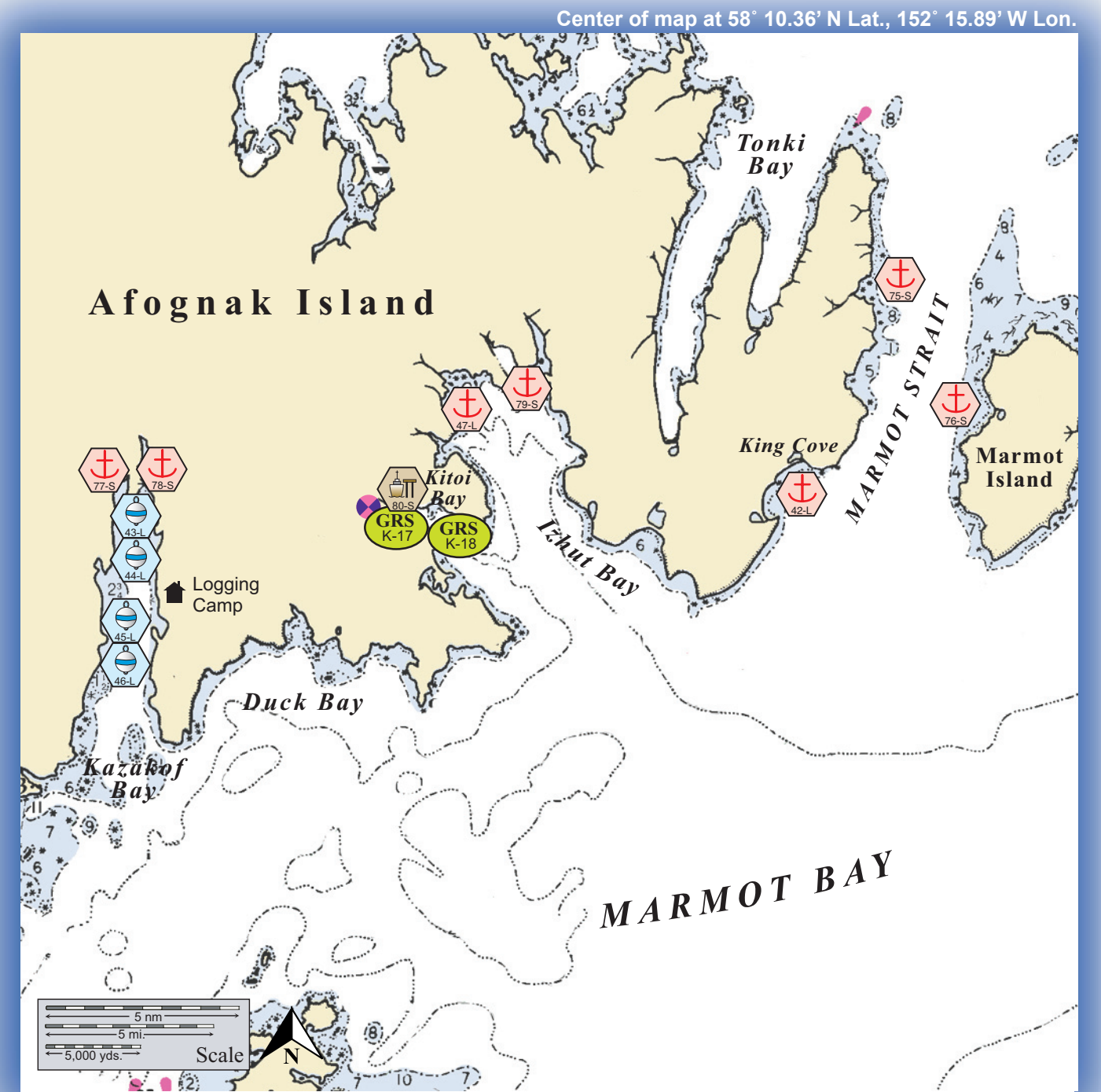


45-L, 79-S Izhut Bay from the Southeast.



80-S Kitoi Bay viewed from the Southeast.

Potential Places of Refuge for Kodiak Island Subarea



	Anchorage		Existing GRS
	Mooring		Fish Hatchery
	Dock/pier		Private Cabins
	Crane		Public Use Cabins
	Airport		Boat Harbor

**Kodiak
PPOR
Map 02**

USGS 1:250K Quadrangle Map
Reference - Afognak

Kodiak PPOR Map-02 Site Considerations – Northern Marmot Bay													
Name	King Cove	Kazakof Bay-1	Kazakof Bay-2	Kazakof Bay-3	Kazakof Bay-4	Izhut Bay	Marmot Strait	Marmot Island	Kazakof Bay-West	Kazakof Bay-East	Izhut Bay	Kitoi Bay Hatchery	
ID Number (See Key Below)	42-L	43-L	44-L	45-L	46-L	47-L	75-S	76-S	77-S	78-S	79-S	80-S	
Human Health & Safety													
Communities – distances-nm	Kodiak-27,Ouzinke-25,Port Lions-33	Kodiak-25,Ouzinke-14,Port Lions-19				Kodiak-28,Ouzinke-24	Kodiak-34,Ouzinke-33	Kodiak-32,Ouzinke-32	Kodiak-28,Ouzinke-16,Port Lions-21		Kodiak-28,Ouzinke-24	Kodiak-24,Ouzinke-22	
Natural Resource Considerations													
Wildlife	Seal lions, harbor seals, otters, seabird nesting	Salmon and herring spawning, harbor seals, otters, seabird nesting, eagle nesting				Seal lions, harbor seals, otters, seabird nesting		Salmon and herring spawning, harbor seals, otters, seabird nesting, eagle nesting					
Threatened & Endangered Species	Sea lion haulout at the S. end of Marmot Island	Sea lions are in the immediate area				Sea lion haulout at the S. end of Marmot Island		Steller's sea lion are in the immediate area					
Environmentally Sensitive Areas	Not designated				Designated as Environmentally Sensitive Areas		Not designation			Designated as an Environmentally Sensitive Area			
Other Stakeholder considerations													
Fisheries	Salmon, crab, herring, groundfish												
Historic Properties	If suspected cultural artifacts are encountered, notify the State Historic Preservation Office and the land managers. Review adjacent GRS (if applicable) for information on historic properties.												
Mariculture	No				Hatchery and salmon release sites		No			Salmon hatchery and release sites			
Subsistence	Salmon, crab, intertidal harvest				Intertidal harvest		Salmon, crab, intertidal harvest			Salmon, crab, intertidal harvest			
Tourism/Recreation	High recreational use area- sport fishing, kayaking, anchorage, excursion boats												
Waterfront Public Facilities/Parks	Afognak State Park	None				Afognak State Park			None			None	
Waterfront Private Facilities	None	Logging camp, contact Afognak Native Corp.				None			None			Katoi Bay Hatchery Facilities	
Response and Salvage Resource Considerations													
Ability to Boom Vessel	No	Yes				No	Weather dependent		Yes				
Geographic Response Strategies	No				K-17 Big & Little Kitoi Bay, K-18 Kitoi Bay Jaws		No			K-17 Big & Little Kitoi Bay, K-18 Kitoi Bay Jaws		K-17 Big & Little Kitoi Bay, K-18 Kitoi Bay Jaws	
Closest Alternative Places of Refuge (same sized vessel)	PPOR 02-47-L Kazakof Bay-4: 13.5nm	PPOR 03-48-L Low Island Anchorage: 13nm				PPOR 02-42-L King Cove: 13.5 nm.	PPOR 02-76-S Marmot Island: 4nm.	PPOR 02-75-S Marmot Strait: 4nm.	PPOR 02-79-S Kazakof Bay-east: 0.5nm	PPOR 02-78-S Kazakof Bay-west: 0.5nm	PPOR 02-80-S Kitoi Bay Hathyery: 7.5nm	PPOR 02-77-S Izhut Bay: 6.5nm	

Site ID Number and Vessel Size Classification		Kodiak PPOR-02 Physical and Operational Characteristics – Northern Marmot Bay Area												
D = Deep Draft Vessel, greater than 20,000 GT		Name	King Cove	Kazakof Bay-1	Kazakof Bay-2	Kazakof Bay-3	Kazakof Bay-4	Izhut Bay	Marmot Strait	Marmot Island	Kazakof Bay-west	Kazakof Bay-east	Izhut Bay	Kitoi Bay Hatchery
L = Light Draft Vessel, up to 20,000 GT		ID Number	42-L	43-L	44-L	45-L	46-L	47-L	75-S	76-S	77-S	78-S	79-S	80-S
S = Shallow Draft Vessel, 300 GT and less		Anchorage Locations	58°11.64'N 152°01.67'W	PPOR 03-04-D Wooded Island				58°14.08'N 152°17.99'W	58°16.97'N 151°58.20'W	58°13.80'N 151°53.00'W	58°11.67'N 152°35.53'W	58°11.55'N 152°34.46'W	58°15.15'N 152°16.29'W	PPOR-02-79-S Izhut Bay
		Mooring Locations	Nearest mooring PPOR 02-43-L Kazakof Bay-1	58°07.56'N 152°34.40'W	58°07.82'N 152°34.35'W	58°10.46'N 152°34.07'W	58°10.19'N 152°34.11'W	Nearest mooring PPOR 02-43-L Kazakof Bay-1						
		Docks/Piers	Nearest dock PPOR-02-80-S Kitoi Bay Hatchery Dock-15 ft. max vessel draft											58°11.44'N 152°22.17'W
		Maximum Vessel Size	Light draft, up to 20,000 Gross Tons						Shallow draft, 300 Gross Tons and less					
		Type of Berthing	Anchorage	Mooring				Anchorage				Dock/Pier		
		Contact	N/A	Afognak Native Corp. (907)486-6014				N/A				Kodiak Island Aquaculture Association (907)486-6555		
		Navigational Approach	Approach from N,NE,S	Approach from S				Approach from N,NE,S	Approach from the W,N,S	Approach from S				Approach from the SE
		Minimum Water Depths	12 Fathoms in the swing area	18 Fathoms in the swing area	26 Fathoms in the swing area	13 Fathoms in the swing area	13 Fathoms in the swing area	17 Fathoms in the swing area	5.5 Fathoms in the swing area	4.75 Fathoms in the swing area	3 Fathoms in the swing area	3 Fathoms in the swing area	13 Fathoms in the swing area	3 Fathoms at the dock Face
		Maximum Water Depth	22 Fathoms in the swing area	26 Fathoms in the swing area	27 Fathoms in the swing area	19 Fathoms in the swing area	14 Fathoms in the swing area	42 Fathoms in the swing area	16 Fathoms in the swing area	8.5 Fathoms in the swing area	13 Fathoms in the swing area	12 Fathoms in the swing area	22 Fathoms in the swing area	3 Fathoms at the dock Face
		Maximum Vessel Draft	70 ft.	60 ft.	60 ft.	60 ft.	60 ft.	60 ft.	25 ft.	20 ft.	15 ft.	15 ft.	60 ft.	15 ft.
		Swing Room/Dock Face	1500 ft.	1300 ft.	1200 ft.	1000 ft.	1000 ft.	2300 ft.	1000 ft.	1500 ft.	600 ft.	600 ft.	800 ft.	Floating dock 30 ft.
		Bottom Type	Sand	N/A				Mud	Sand, Gravel		Rocky		Sand, Gravel	N/A
		Prevailing Winds	Variable in direction and velocity, strong winds occur throughout the area											
		Currents	Currents are negligible						Alaska Coastal Current moves south down Marmot Strait		Currents are negligible			
		Tides	Mean High Water-8.0 (Higher- 8.9) , Mean Low Water- 1.1 (Lower- -4.0)											
		Sea Conditions	Exposed to the S,SE,NE	Exposed to swell from the S.				Sheltered from the W only	Exposed to swell from the SE, W, NW,N.	Exposed to swell from the S.			Sheltered	
		Shelter from Severe Storms	Exposed to storms from the S,SE,NE	Exposed to storms from the S.				Only provides adequate shelter for storms from the W.	Sheltered from NE,E,SE storms	Exposed to storms from the S.			Sheltered	
		Fog	Fog can occur during all seasons.											

Kodiak PPOR-02 Northern Marmot Bay Stakeholders	
Landowner (yr-2006)	Contact
Alaska State Parks	Kodiak District Ranger
Afognak Joint Venture	Chief Executive Officer
Afognak Native Corporation	Chief Executive Officer
Kodiak Island Borough	Borough Manager
Alaska Maritime National Wildlife Refuge	Dept. of the Interior-Regional Environmental Officer
Natives of Kodiak Inc	Chief Executive Officer
Ouzinkie Native Corporation	Chief Executive Officer
Private Landowners-contact Alaska State Lands Recorder Office	Kodiak District Recorder Office

NOTE: Sensitive resource information can be found on other maps which can be accessed through the sensitive area section of the Kodiak Sub-Area Contingency Plan: <http://www.akrrt.org/kodiakplan/kodiakplantoc.shtml>