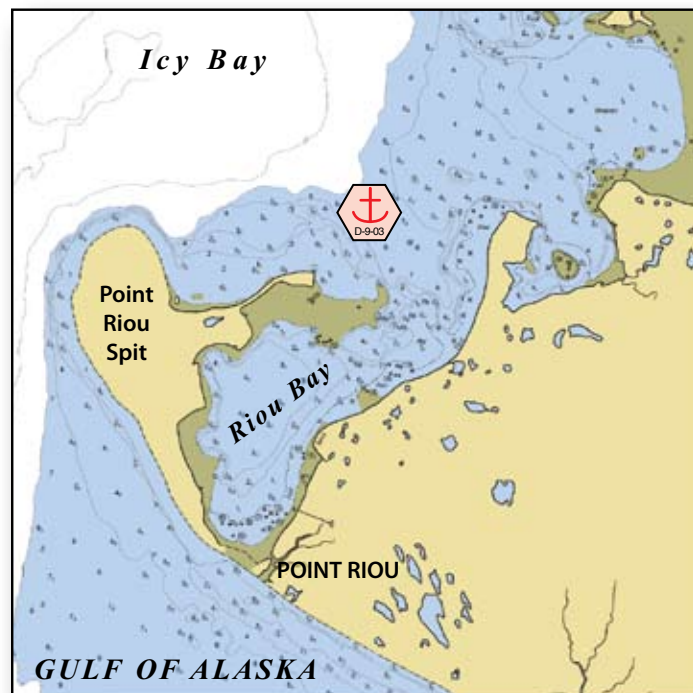




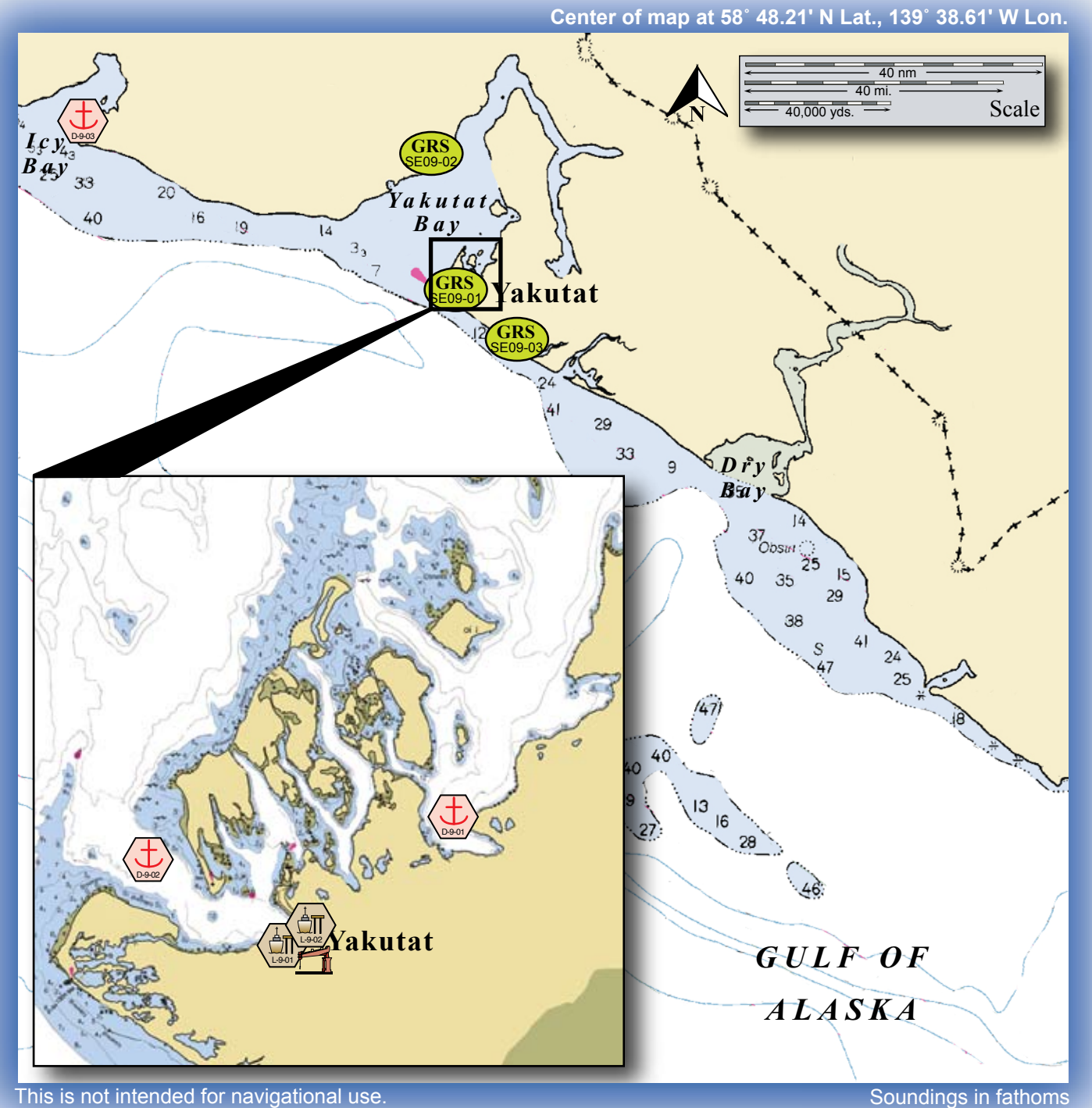
Monti Bay viewed from the east.



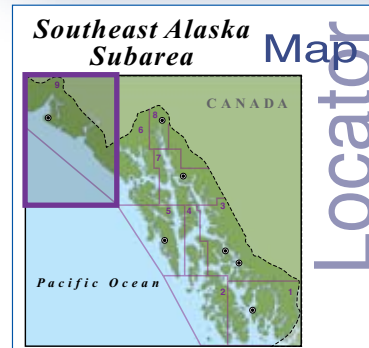
Johnstone Passage and Sea Otter Bay viewed from the south.



# Potential Places of Refuge for Southeast Alaska Subarea



This is not intended for navigational use.



	Anchorage		Existing GRS
	Mooring		Fish Hatchery
	Dock/pier		Aquatic Farms
	Crane		Private Cabins
	Airport		Public Use Cabins
			Boat Harbor

## Southeast PPOR Map 09

USGS 1:22,100,000K Quadrangle Map Reference - Southeast Alaska REG30



Site Considerations for PPOR Zone 09 of the Southeast Alaska Subarea					
	Broken Oar Anchorage	Monti Bay Anchorage	Point Riou Anchorage	Yakutat City Dock	Ocean Cape Dock
ID Number	D-09-01	D-09-02	D-09-03	L-09-01	L-09-02
Human Health & Safety					
Community-distance to (nm)	0.5 to Yakutat		56 to Yakutat	0 to Yakutat	
Health Care Facilities	Clinic Services in Yakutat				
Natural Resources Considerations					
Fish & Wildlife	Spawning salmon, seals, waterfowl, seabirds				
Threatened & Endangered Species	None (2010)				
Sensitive Areas	Adjacent area designated sensitive by SE GRS Workgroup		Not Designated	Adjacent area designated sensitive by SE GRS Workgroup	
Other Stakeholder Considerations					
Fisheries	Salmon, Groundfish, Crab				
Historic Properties	Historic Properties are present throughout the area.				
Mariculture*	None				
Subsistence	High local subsistence use		Low level subsistence use	High local subsistence use	
Tourism/Recreation	High level recreational use throughout the area-sport fishing, wildlife viewing, excursions, camping, cruise ships, hunting			High level recreational use throughout the area-sport fishing, wildlife viewing, excursions, camping, cruise ships, hunting	
Waterfront Public Facilities/Parks	Municipality owned small boat harbor and supporting services are present in Yakutat.		Wrangell-St. Elias National Park- No services available	Municipality owned small boat harbor and supporting services are present in Yakutat.	
Waterfront Private Facilities	Marine services docks and piers in Yakutat		None	Marine services docks and piers in Yakutat	
Response and Salvage Resource Consideration					
Ability to Boom Vessel	Yes	Weather Dependent		Yes	
Geographic Response Strategies	SE09-01		None (2010)	SE09-01	
Closest Alternative PPOR for a same sized vessel	12 nm to D-09-02	12 nm to D-09-01	56 nm to D-09-02	0.2 nm to L-09-02	0.2 nm to L-09-02

Physical and Operational Characteristics for PPOR Map 09 of the Southeast Alaska Subarea					
	Broken Oar Anchorage	Monti Bay Anchorage	Point Riou Anchorage	Yakutat City Dock	Ocean Cape Dock
ID Number	D-09-01	D-09-02	D-09-03	L-09-01	L-09-02
Location-(In the general area of)	59°34.38'N 139°39.90'W	59°33.66'N 139°48.48'W	59°55.62'N 141°27.00'W	59°32.70'N 139°44.34'W	59°32.88'N 139°44.04'W
Maximum Vessel Size	Deep Draft Vessels- lengths up to 1000 feet, 20-40 feet of draft, greater than 10,000 GT			Light Draft Vessel - up to 450 feet in length, draft up to 20 feet	
Type of Berthing	Anchorage			Dock	
Contact	Harbormaster 907.784.3491		N/A	Harbormaster 907.784.3491	
Navigational Approach	N from Yakutat Bay	W from Yakutat Bay	Approach from the S	W via Monti Bay	
Minimum Water Depths (MLLW)	49 fathoms	26 fathoms	10 fathoms	35 ft.	53 ft.
Maximum Vessel Draft	40 ft. +			20 ft. +	
Swing Room or Dock Face (w/ dolphins)	1500 ft.	3000 ft.	2400 ft.	112 ft.	400 ft.
Bottom Type	Mud, Shells	Sand	Mud	N/A	
Nearest Alternative Dock/Piers	Nearest Deep Draft Docks are in Prince William Sound			0.2 nm to L-09-02	0.2 nm to L-09-01
Nearest Alternative Anchorage	12 nm to D-09-02	12 nm to D-09-01	56 nm to D-09-02	2.5 nm to D-09-01	2.6 nm to D-09-01
Prevailing Winds	Easterlies and southeasterlies are frequent year round.				
Currents	Complex currents exist in Yakutat Bay. Minimal currents at the anchorages.		Minimal currents at the anchorages.	Complex currents exist in Yakutat Bay. Minimal currents at the docks.	
Tides	Mean High 9.2 ft. (Higher 10.1) Mean Low 1.4 (Lower -4.0)		Mean High 9.0 ft. (Higher 9.9) Mean Low 1.4 (Lower -4.5)	Mean High 9.2 ft. (Higher 10.1) Mean Low 1.4 (Lower -4.0)	
Sea Conditions	Sheltered	Exposed to swells from the W	Exposed to swells from the N	Sheltered	
Shelter from Severe Storms		Sheltered from N-S storms	Sheltered from E-W storms		
Fog	Frequent throughout the year. Heaviest from June-July.				
Ice	Ice can form in bays from November until May if colder conditions prevail.		Use extreme caution, ice from glaciers can cause hazards to navigation.	Ice can form in bays from November until May if colder conditions prevail.	

NOTE: Sensitive resource information can be found on other maps which can be accessed through the sensitive area section of the Southeast Alaska Subarea Contingency Plan: [http://dec.alaska.gov/spar/perp/plans/scp\\_se.htm](http://dec.alaska.gov/spar/perp/plans/scp_se.htm)

Site ID Number and Vessel Size Classification	
D = Deep Draft Vessel-lengths to 1,000 ft or greater, 20-40 ft of draft, greater than 10,000 GT	
L = Light Draft Vessel-up to 450 feet in length, draft up to 20 ft	
Stakeholders for PPOR Zone 09 of the Southeast Alaska Subarea	
Organization	Contact
Alaska Department of Fish & Game	Resource Manager
Alaska Department of Natural Resources	Resource Manager, State Historic Preservation Officer
Chugach Alaska Corporation	President
City and Borough Yakutat	Manager
Native Allotments	Dept of the Interior-Regional Environmental Officer
Sealaska Corporation	President
Tongass National Forest	Forest Supervisor
Wrangell-St. Elias National Park	Dept of the Interior-Regional Environmental Officer
Yak-Tat Kwaan, Incorporated	President
Yakutat Tlingit Tribe	President

\*For current mariculture operations, ownership information and locations, consult the ADF&G mariculture website: <http://www.cf.adfg.state.ak.us/geninfo/enhance/maricult/maricult.php>