



Port Chester and Metlakatla City Dock viewed from the southwest.



Alaska Ship & Drydock facilities viewed from the north.



Ward Cove viewed from the northeast.

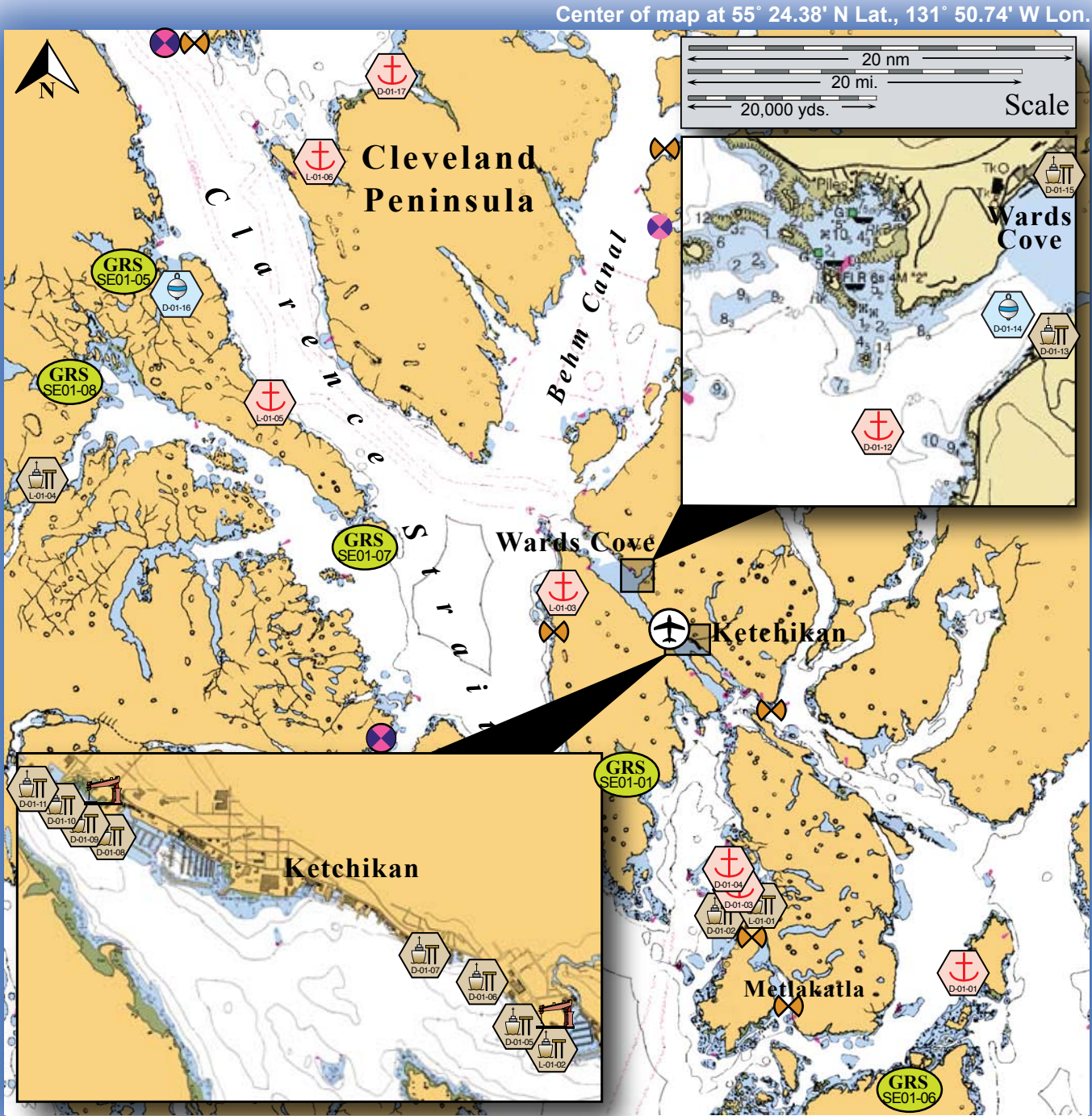


The Port of Ketchikan viewed from the southeast.

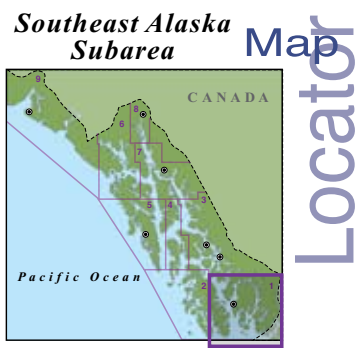


Tolstoi Bay Moorage viewed from the northeast.

Potential Places of Refuge for Southeast Alaska Subarea



This is not intended for navigational use. Soundings in fathoms



	Anchorage		Existing GRS
	Mooring		Fish Hatchery
	Dock/pier		Aquatic Farms
	Crane		Private Cabins
	Airport		Public Use Cabins
			Boat Harbor

Southeast PPOR Map 01
 USGS 1:229,376K Quadrangle Map
 Reference - Hecate Strait to Etolin Island 17420

Site Considerations for PPOR Zone 01 of the Southeast Alaska Subarea															
	Mary Island	Metlakatla City Dock	Port Chester	Nichols Passage	Ketchikan Berth 1&2	Ketchikan Berth 3	Ketchikan Berth 4	AK Marine Lines	Ferry Terminal-1	Ferry Terminal-2	Alaska Ship & Drydock	Ward Cove	Boyer Towing Dock	Ward Cove Mooring	Former Pulp Mill Dock
ID Number	D-01-01	D-01-02	D-01-03	D-01-04	D-01-05	D-01-06	D-01-07	D-01-08	D-01-09	D-01-10	D-01-11	D-01-12	D-01-13	D-01-14	D-01-15
Human Health & Safety															
Community-distance to (nm)	23 to Ketchikan	0 to Metlakatla	.5 to Metlakatla	2.5 to Metlakatla	0 to Ketchikan	0 to Ketchikan	0 to Ketchikan	0 to Ketchikan	0 to Ketchikan	0 to Ketchikan	0 to Ketchikan	0 to Ketchikan	0 to Ketchikan	0 to Ketchikan	0 to Ketchikan
Health Care Facilities	Full Hospital Services in Ketchikan	Clinic Services in Metlakatla			Full Hospital Services in Ketchikan										
Natural Resources Considerations															
Fish & Wildlife	Spawning salmon & herring, seals, waterfowl	Spawning salmon, seals, waterfowl			Spawning salmon & herring, seals, waterfowl										
Threatened & Endangered Species	None (2010)														
Sensitive Areas	Adjacent area designated sensitive by SE GRS Workgroup	Not Designated		Adjacent area designated sensitive by SE GRS Workgroup	Not Designated										
Other Stakeholder Considerations															
Fisheries	Salmon, Herring, Groundfish, Crab	Salmon, Groundfish, Crab			Salmon, Herring, Groundfish, Crab										
Historic Properties	Historic Properties are present throughout the area.														
Mariculture*	None	None			Hatchery operations in the Ketchikan area										
Subsistence	Low level subsistence use	High local subsistence use			Low level subsistence use										
Tourism/Recreation	High level recreational use throughout the area-sport fishing, wildlife viewing, excursions, camping, cruise ships, hunting														
Waterfront Public Facilities/Parks	Tongass National Forest-No waterfront facilities	Small boat harbor and supporting services are present in Metlakatla. Tongass National Forest			Municipality owned small boat harbor and supporting services are present in Ketchikan Tongass National Forest.										
Waterfront Private Facilities	None present	Marine services docks and piers in Metlakatla			Numerous marine services docks and piers.										
Response and Salvage Resource Consideration															
Ability to Boom Vessel	No	Weather Dependent			Yes							Weather Dependent	Yes	Weather Dependent	Yes
Geographic Response Strategies	SE01-06	None (2009)		SE01-01	None (2009)										
Closest Alternative PPOR for a same sized vessel	23 to D-01-05	.5 to D-01-03	.5 to D-01-02	2.5 to D-01-02	.2 to D-01-06	.2 to D-01-07	.2 to D-01-06	.2 to D-01-09	.1 to D-01-10	.2 to D-01-10	.2 to D-01-09	.6 to D-01-14	.1 to D-01-14	.1 to D-01-13	.5 to D-01-14

Table continued below.

Site Considerations for PPOR Zone 01 of the Southeast Alaska Subarea								
	Tolstoi Bay Moorage	Vixen Inlet	Metlakatla Ferry Dock	Ketchikan Berth 1-C & 1-D	Vallenar Bay	Hollis Ferry Dock	Lyman Anchorage	Union Bay
ID Number	D-01-16	D-01-17	L-01-01	L-01-02	L-01-03	L-01-04	L-01-05	L-01-06
Human Health & Safety								
Community-distance to (nm)	6 to Thorne Bay	17 to Thorne Bay	0 to Metlakatla	0 to Ketchikan	9 to Ketchikan	1 to Hollis	15 to Thorne Bay	14 to Thorne Bay
Health Care Facilities	Clinic Services in Thorne Bay		Clinic Services in Metlakatla	Full Hospital Services in Ketchikan		EMS in Hollis	Clinic Services in Thorne Bay	
Natural Resources Considerations								
Fish & Wildlife	Spawning salmon, seals, waterfowl			Spawning salmon & herring, seals, waterfowl		Spawning salmon, seals, waterfowl	Spawning salmon & herring, seals, waterfowl	
Threatened & Endangered Species	None (2010)							
Sensitive Areas	Adjacent area designated sensitive by SE GRS Workgroup	Not Designated				Adjacent area designated sensitive by SE GRS Workgroup	Not Designated	
Other Stakeholder Considerations								
Fisheries	Salmon, Groundfish, Crab			Salmon, Herring, Groundfish, Crab		Salmon, Groundfish, Crab	Salmon, Herring, Groundfish, Crab	
Historic Properties	Historic Properties are present throughout the area.							
Mariculture *K	None			Hatchery operations	None			
Subsistence	High local subsistence activities	Low level subsistence use	High local subsistence activities	Low level subsistence use		High local subsistence activities	Low level subsistence use	
Tourism/Recreation	High level recreational use throughout the area-sport fishing, wildlife viewing, excursions, camping, cruise ships, hunting							
Waterfront Public Facilities/Parks	Small Boat Harbor in Thorne Bay	Tongass National Forest-No waterfront facilities	Harbor and supporting services are present in Metlakatla. Tongass National Forest	Municipality owned small boat harbor and supporting services are present in Ketchikan.	Tongass National Forest- No waterfront facilities	Hollis Ferry dock and small dock present	Tongass National Forest-No waterfront facilities	
Waterfront Private Facilities	Private facilities in Thorne Bay	None	Marine services docks and piers in Metlakatla	Numerous marine services docks and piers.	None	Private docks in the area	None	
Response and Salvage Resource Consideration								
Ability to Boom Vessel	No	Weather Dependent	Yes		Weather Dependent	Yes	Weather Dependent	
Geographic Response Strategies	SE01-05	None (2009)				SE01-08	None (2009)	
Closest Alternative PPOR for a same sized vessel	16 to D-01-17	16 to D-01-16	.2 to D-01-02	.2 to D-01-05	8 to D-01-13	26 to L-01-05	17 to L-01-03	16 to L-01-05

*For current mariculture operations, ownership information and locations, consult the ADF&G mariculture website: <http://www.cf.adfg.state.ak.us/geninfo/enhance/maricult/maricult.php>

Site ID Number and Vessel Size Classification
D = Deep Draft Vessel-lengths to 1,000 ft or greater, 20-40 ft of draft, greater than 10,000 GT
L = Light Draft Vessel-up to 450 feet in length, draft up to 20 ft

Stakeholders for PPOR Zone 01 of the Southeast Alaska Subarea	
Organization	Contact
Alaska Department of Fish & Game	Resource Manager
Alaska Department of Natural Resources	Resource Manager, State Historic Preservation Officer
Cape Fox Corporation	CEO
Central Council Tlingit-Haida Tribal	President
City of Hydaburg	Mayor
City of Ketchikan	Manager
Hydaburg Cooperative Association	President
Haida Corporation	President
Ketchikan Gateway Borough	Manager
Ketchikan Indian Corporation	President
Metlakatla Indian Community	Mayor
Native Allotments	Dept of the Interior-Regional Environmental Officer
Organized Village of Kasaan	President
Sealaska Corporation	President
Thorne Bay	Mayor
Tongass National Forest	Forest Supervisor

Tables continued on next page.

NOTE: Sensitive resource information can be found on other maps which can be accessed through the sensitive area section of the Southeast Alaska Subarea Contingency Plan: http://dec.alaska.gov/spar/perp/plans/scp_se.htm

Physical and Operational Characteristics for PPOR Map 01 of the Southeast Alaska Subarea											
	Mary Island	Metlakatla City Dock	Port Chester	Nichols Passage	Ketchikan Berth 1&2	Ketchikan Berth 3	Ketchikan Berth 4	AK Marine Lines	Ferry Terminal-1	Ferry Terminal-2	Alaska Ship & Drydock
ID Number	D-01-01	D-01-02	D-01-03	D-01-04	D-01-05	D-01-06	D-01-07	D-01-08	D-01-09	D-01-10	D-01-11
Location <i>(in the general area)</i>	55°03.23'N 131°16.25'W	55°07.74'N 131°34.14'W	55°07.92'N 131°33.48'W	55°09.98'N 131°36.70'W	55°20.40'N 131°38.76'W	55°20.58'N 131°39.00'W	55°20.64'N 131°39.36'W	55°21.12'N 131°41.40'W	55°21.24'N 131°41.70'W	55°21.30'N 131°41.76'W	55°21.30'N 131°41.94'W
Maximum Vessel Size	Deep Draft Vessels- lengths to 1000 feet or greater, 20-40 feet of draft, greater than 10,000 GT										
Type of Berthing	Anchorage	Dock	Anchorage			Dock					
Contact	Harbormaster 907.874.3736	Harbormaster 907.866.4646		N/A		Harbormaster 907.228.5632		Manager 907.225.7660	Terminal Manager 907.225.6182		Director 907.225.7199
Navigational Approach	Approach from the SW or N	Approach from the W via marked channel		Approach from the S or N		NW or SE via marked channel-Approach has little maneuvering room.					
Minimum Water Depths <i>(MLLW)</i>	32 fathoms	35 ft.	21 fathoms	23 fathoms	30-40 ft.	40 ft.	35 ft.	35 ft.	35 ft.	40 ft.	35 ft.
Maximum Vessel Draft	40 ft. +	30 ft.	40 ft. +	40 ft. +	30 ft.	35 ft.	30 ft.	30 ft.	30 ft.	35 ft.	30 ft.
Swing Room or Dock Face <i>(w/ dolphins)</i>	6000 ft.	400 ft.	2800 ft.	3000 ft.	1605 ft.	575 ft.-face 864 ft.-total	400 ft.-face 850 ft.-total	400 ft.	550 ft.	450 ft.	560 ft.
Bottom Type	Sand, gravel	N/A	Mud, rocky	Gravel	N/A						
Nearest Alternative Dock/Piers	23 nm to D-01-05	13.5 nm to D-01-05	13 nm to D-01-05	13 nm to D-01-05	.2 nm to D-01-06	.2 nm to D-01-07	.2 nm to D-01-06	.2 nm to D-01-09	.1 nm to D-01-10	.1 nm to D-01-09	.2 nm to D-01-09
Nearest Alternative Anchorage	24 nm to D-01-02	.5 nm to D-01-03	2.5 nm to D-01-04	2.5 nm to D-01-03	5 nm to D-01-12	4.5 nm to D-01-12	4 nm to D-01-12	3 nm to D-01-12	2.8 nm to D-01-12	2.8 nm to D-01-12	2.6 nm to D-01-12
Prevailing Winds	Strongest winds are usually out of the N, E, and SE. May through September NW winds dominate. E and SE winds blow more than 50 percent of the time from October through February										
Currents	Tidal currents at the anchorage under 1.5 knots	Currents under 1 knot	Minimal current at the anchorage.	Minimal current at the anchorage.	The tidal current in Tongass Narrows is generally weak. Areas around Idaho Rock report currents approx. 2.5 knots.						
Tides	Mean High 14.5 ft. (Higher 15.4) Mean Low 1.5(Lower -4.5)	Mean High 13.8 ft. (Higher 14.7) Mean Low 1.5 (Lower -4.5)			Mean High 14.5 ft. (Higher 15.4) Mean Low 1.6 (Lower 0.0)						
Sea Conditions	Exposed to swells from the NE	Sheltered		Sheltered		Sheltered					
Shelter from Severe Storms	Sheltered from E-W storms			Sheltered from E & W storms		Sheltered					
Fog	Frequent throughout the year. Advection fog may present problems, particularly from July to September.										
Ice	Ice may form in bays from November until May if colder conditions prevail.										

Physical and Operational Characteristics for PPOR Map 01 of the Southeast Alaska Subarea												
	Ward Cove	Boyer Towing Dock	Ward Cove Mooring	Former Pulp Mill Dock	Tolstoi Bay Moorage	Vixen Inlet	Metlakatla Ferry Dock	Ketchikan Berth 1-C & 1-D	Vallenar Bay	Hollis Ferry Dock	Lyman Anchorage	Union Bay
ID Number	D-01-12	D-01-13	D-01-14	D-01-15	D-01-16	D-01-17	L-01-01	L-01-02	L-01-03	L-01-04	L-01-05	L-01-06
Location (in the general area)	55°23.52'N 131°44.76'W	55°23.82'N 131°43.68'W	55°23.88'N 131°43.92'W	55°24.36'N 131°43.56'W	55°38.84'N 132°26.06'W	55°49.94'N 132°06.81'W	55°07.14'N 131°32.82'W	55°20.33'N 131°38.64'W	55°23.50'N 131°51.39'W	55°29.47'N 132°37.51'W	55°32.70'N 132°17.31'W	55°45.01'N 132°12.17'W
Maximum Vessel Size	Deep Draft Vessels- lengths to 1000 feet or greater, 20-40 feet of draft, greater than 10,000 GT						Light Draft Vessel - up to 450 feet in length, draft up to 20 feet					
Type of Berthing	Anchorage	Dock	Mooring	Dock	Mooring	Anchorage	Dock		Anchorage	Dock	Anchorage	
Contact	N/A	Terminal Manager 907.225.2090		907.228.6618	Sealaska Corp. 907.225.9444	N/A	Terminal Manager 907.225.6182	Harbormaster 907.228.5632	N/A	Terminal Manager 907.225.6182	N/A	
Navigational Approach	Approach from the E				Approach from the N	Approach from the E-NW	Approach from the W via marked channel	NW or SE via marked channel-Approach has little maneuvering room.	Approach from the N	NW from Kasaan Bay	Approach from the N-SW	Approach from the N
Minimum Water Depths (MLLW)	30 fathoms	40 ft.	26 fathoms	30 ft.	73 fathoms	28 fathoms	24 ft.	20 ft.	32 fathoms	25 ft.	9 fathoms	34 fathoms
Maximum Vessel Draft	40 ft+.	35 ft.	40 ft.+	25 ft.	40 ft.+		20 ft.	15 ft.	20 ft. +	20 ft.		20 ft. +
Swing Room or Dock Face (w/ dolphins)	1500 ft.	750 ft.	600 ft.	800 ft.	1800 ft.	3000 ft.	280 ft.	860 ft.	3000 ft.	200 ft.	1500 ft.	2400 ft.
Bottom Type	Mud	N/A				Rocky	N/A		Sand	N/A	Rocky	Sand, gravel
Nearest Alternative Dock/Piers	1.5 nm to D-01-13	0.7 to D-01-15	0.6 nm to D-01-13	0.5 nm to D-01-13	31 nm to D-01-13	37 nm to D-01-13	1 nm to D-01-02	.2 nm to D-01-05	8 nm to D-01-13	33 nm to D-01-13	20 nm to D-01-13	35 nm to D-01-13
Nearest Alternative Anchorage	0.6 nm to D-01-14	0.7 nm to D-01-13	0.6 nm to D-01-12	0.5 nm to D-01-14	16 nm to D-01-17	16 nm to D-01-16	1 nm to D-01-03	4 nm to D-01-12	13 nm to D-01-12	26 nm to L-01-05	17 nm to L-01-03	16 nm to L-01-05
Prevailing Winds	Strongest winds are usually out of the N, E, and SE. May through September NW winds dominate. E and SE winds blow more than 50 percent of the time from October through February											
Currents	The tidal current in Tongass Narrows is generally weak. Areas around Idaho Rock report currents approx. 2.5 knots.				Minimal current at moorage.	Minimal current at anchorage.	Currents under 1 knot.	The tidal current in Tongass Narrows is generally weak.	Minimal current at anchorage.	Currents under 1 knot.	Minimal current at anchorage.	
Tides	Mean High 14.8 ft. (Higher 15.7) Mean Low 1.6 (Lower -5.5)				Mean High 14.8 ft. (Higher 15.7) Mean Low 1.5 (Lower -4.5)	Mean High 15.7 ft. (Higher 16.5) Mean Low 1.5 (Lower -4.5)	Mean High 13.8 ft. (Higher 14.7) Mean Low 1.5 (Lower -4.5)	Mean High 14.5 ft. (Higher 15.4) Mean Low 1.6 (Lower 0.0)	Mean High 14.4 ft. (Higher 15.3) Mean Low 1.4 (Lower -4.5)	Mean High 14.7 ft. (Higher 15.6) Mean Low 1.6 (Lower -4.5)		Mean High 15.7 ft. (Higher 16.5) Mean Low 1.5 (Lower -4.5)
Sea Conditions	Sheltered					Sheltered from NW-SE	Sheltered		Sheltered from NW-SE	Sheltered	Sheltered from the W-E	Sheltered from W-E
Shelter from Severe Storms	Sheltered					Exposed to swell from the W-N			Exposed to the NW-N		Exposed to the N	Exposed to swell from the N
Fog	Frequent throughout the year. Advection fog may present problems, particularly from July to September.											
Ice	Ice may form in bays from November until May if colder conditions prevail.											

NOTE: Sensitive resource information can be found on other maps which can be accessed through the sensitive area section of the Southeast Alaska Subarea Contingency Plan: http://dec.alaska.gov/spar/perp/plans/scp_se.htm