

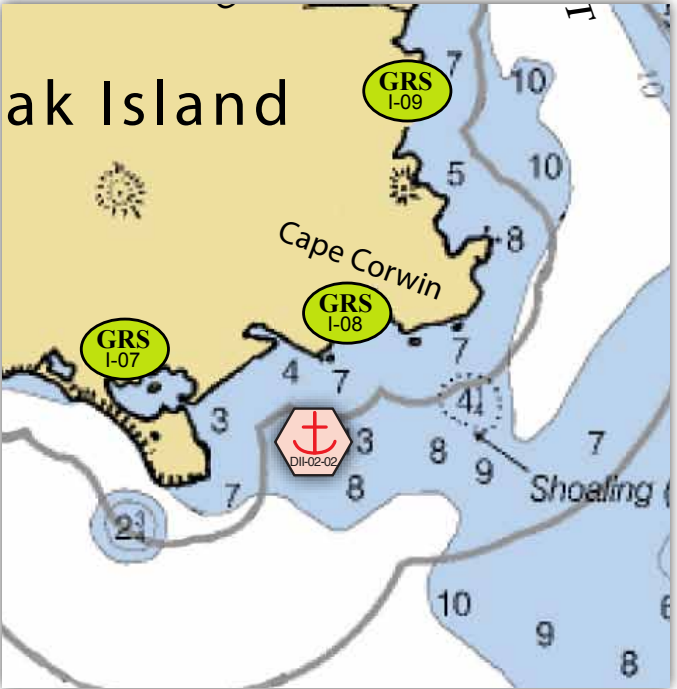
DII-02-05, and DII-02-04.



DII-02-03, and DII-02-06.



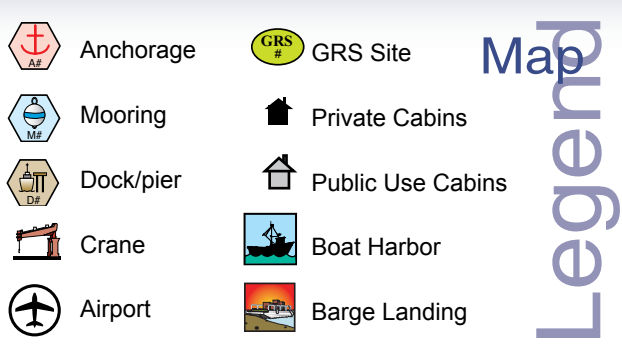
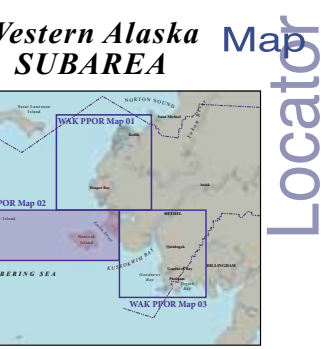
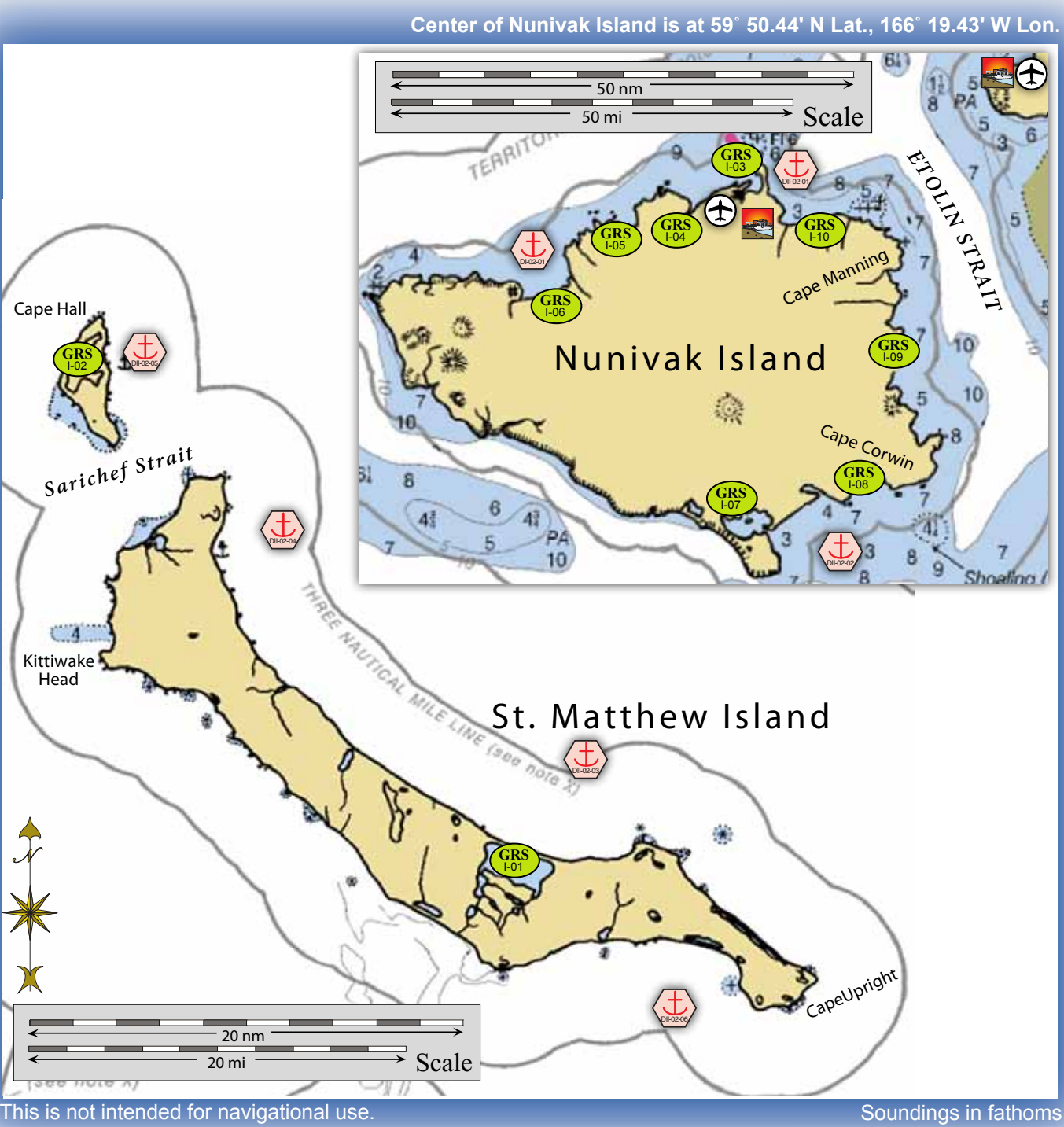
DII-02-01, and DII-02-01.



DII-02-02.

Stakeholders for PPOR Zone 02 of the Western Alaska Subarea			
Landowner (year-2012)	Contact	Landowner (year-2012)	Contact
Bureau of Land Management	Dept of the Interior-Regional Environmental Officer	City of Mekoryuk	Mayor
Alaska Maritime National Wildlife Refuge	Dept of the Interior-Regional Environmental Officer	Nima Corporation	Chairman
Alaska Department of Natural Resources	State Historic Preservation Officer	Native Village of Mekoryuk	President
Yukon Delta National Wildlife Refuge	Dept of the Interior-Regional Environmental Officer	Calista Corporation	President

# Potential Places of Refuge for Western Alaska Subarea



**Western Alaska PPOR Map 02**  
 USGS 1:1,534,076 Quadrangle Map Reference - Bering Sea Eastern Part 16606\_1

Physical and Operational Characteristics for PPOR Zone 02 of the Western Alaska Subarea							
	Cape Etolin	Cape Mendenhall	Lunda Head	Glory of Russia Cape	Hall Island	Cape Upright	Nash Harbor
ID Number	DII-02-01	DII-02-02	DII-02-03	DII-02-04	DII-02-05	DII-02-06	DI-02-01
Location ( <i>In the general area</i> )	60°25.04'N 165°59.47'W	59°45.62'N 165°50.20'W	60°25.04'N 172°31.47'W	60°34.17'N 172°53.04'W	60°40.33'N 173°01.88'W	60°17.14'N 172°25.24'W	60°13.00'N 166°55.12'W
Maximum Vessel Size	Deep Draft Vessels-lengths to 1000 ft. or greater, 40-60 ft. of draft, greater than 10,000 GT						Deep Draft Vessels-lengths to 1000 ft. or greater, 20-40 ft. of draft, greater than 10,000 GT
Type of Berthing	Anchorage						
Contact	None						
Navigational Approach	Approach from the NW, N, NE	Approach from the S, SE	Approach from the N, NE	Approach from the N, NE, E	Approach from the N, NE, E	Approach from the S, SE	Approach from the N, NW
Minimum Water Depths ( <i>MLLW</i> )	12 fathoms	10 fathoms	14 fathoms	14 fathoms	14 fathoms	17 fathoms	6 fathoms
Maximum Vessel Draft	60 ft.	55 ft.	60 ft.	60 ft.	60 ft.	60 ft.	30 ft.
Swing Room or Dock Face ( <i>w/ dolphins</i> )	0.85 nm to shoal	2.8 nm to shoal	0.95 nm to shoal	.67 nm to shoal (1.25 nm to shore)	0.3 nm to shore	0.88 nm to shoal	0.5 nm to shoal (shore)
Bottom Type	Sand	Sand	Gravel	Gravel	Gravel		PD
Nearest Alternative Dock/Piers	240 nm to Nome	275 nm to Dillingham	313 nm to Nome	312 nm to Nome	336 nm to Nome	350 nm to Nome	255 nm to Nome
Nearest Alternative Anchorage	55 nm to DII-02-02	55 nm to DII-02-01	13 nm to DII-02-04	10 nm to DII-02-05	10 nm to DII-02-04	21 nm to DII-02-03	33 nm to DII-02-01
Prevailing Winds	The prevailing winds in summer are NE, E, and SE. The strong blows are from the same directions.						
Currents	Currents set along shore at approx.1 kt.	Between St. Matthew Island and Nunivak Island, the current sets NW with prevailing NE winds during the navigation season and NE with NW or SW winds.					
Tides (winds may effect water depth more significantly than tidal influence)							
Sea Conditions	Sheltered from swells from the S through W	Sheltered from swells from the N	Sheltered from swells from the S through W			Sheltered from swells from the N	Exposed to Northerly swells
Shelter from Severe Storms	Exposed to N, NE	Exposure to SW, S, SE	Sheltered from S, W storms / Exposed to N, E	Sheltered from S, W storms / Exposed to N, E	Exposure to N, NE, E	Exposed to S, SE, SW, W	Exposure to NW, N, NE
Fog	Fog is common during the navigation season. July and August are usually the worst months.						
Ice	Ice forms in rivers and bays in October. Navigation in open waters is suspended December to May						

Site ID Number & Vessel Size Classification
DII = Deep Draft Vessels lengths up to 1000 feet, 40-60 feet of draft, greater than 10,000 GT
DI = Deep Draft Vessels lengths up to 1000 feet, 20-40 feet of draft, greater than 10,000 GT
L= Light Draft Vessel up to 450 feet in length, draft up to 20 feet
S = A shallow draft vessel less than 300 Gross Tons, has a draft less than 15 ft., LOA less than 200 ft

Site Considerations for PPOR Zone 02 of the Western Alaska Subarea							
	Cape Etolin	Cape Mendenhall	Lunda Head	Glory of Russia Cape	Hall Island	Cape Upright	Nash Harbor
ID Number	DII-02-01	DII-02-02	DII-02-03	DII-02-04	DII-02-05	DII-02-06	DI-02-01
Human Health & Safety							
Community-distance to (nm)	Mekoryuk - 20 nm / pop. 215	Toksook Bay - 53 nm / pop. 598	Mekoryuk - 218 nm / pop. 215	Mekoryuk - 230 nm / pop. 215	Mekoryuk - 235 nm / pop. 215	Mekoryuk - 215 nm / pop. 215	Mekoryuk - 30 nm / pop. 215
Health Care Facilities	Mekoryuk Health Clinic: 907-453-6000	Toksook Bay Sub-Regional Clinic: 907-427-7810	Mekoryuk Health Clinic: 907-453-6000				
Natural Resources Considerations							
Fish & Wildlife	Anadromous fish, seabird nesting, waterfowl concentration	Waterfowl concentrations, shorebird concentrations, anadromous fish	Waterfowl concentrations, shorebird concentrations, anadromous fish, Steller Sea Lion, walrus			Anadromous fish, seabird concentrations, waterfowl concentration	
Threatened & Endangered Species	Spectacled Eider (threatened)	None	Steller sea lion, polar bear				None
Sensitive Areas	Etolin Strait Habitat Conservation Area	Nunivak Island Habitat Conservation Area	St. Matthew Island Habitat Conservation Area				Nunivak Island Habitat Conservation Area
Other Stakeholder Considerations							
Fisheries	No commercial fisheries nearshore						
Historic Properties	Historic properties are present throughout the area.						
Subsistence	High level of subsistence activity.		None				High level of subsistence activity.
Tourism/Recreation	No						
Waterfront Public Facilities/Parks	None						
Waterfront Private Facilities	Yukon Delta National Wildlife Refuge		Alaska Maritime National Wildlife Refuge				Yukon Delta National Wildlife Refuge
Response and Salvage Resource Consideration							
Ability to Boom Vessel	No						Weather Dependent
Geographic Response Strategies	WA-I-10	WA-I-07 & 08	WA-I-02	None	WA-I-02	None	WA-I-05 & 06
Closest Alternative Place of Refuge for same sized vessel	55 nm to DII-02-02	55 nm to DII-02-01	13 nm to DII-02-04	10 nm to DII-02-05	10 nm to DII-02-04	21 nm to DII-02-03	33 nm to DII-02-01

NOTE: Sensitive resource information can be found on other maps which can be accessed through the sensitive area section of the Western Alaska Subarea Contingency Plan: [http://dec.alaska.gov/spar/perp/plans/scp\\_wak.htm](http://dec.alaska.gov/spar/perp/plans/scp_wak.htm)