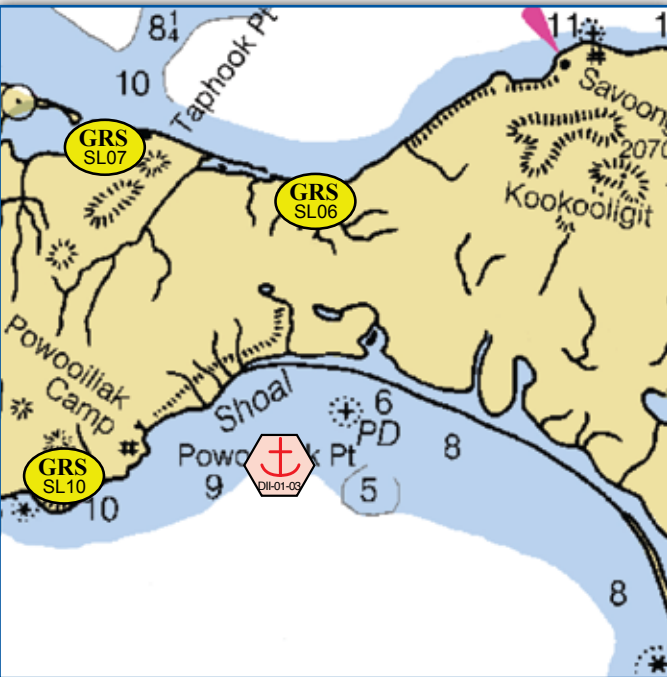


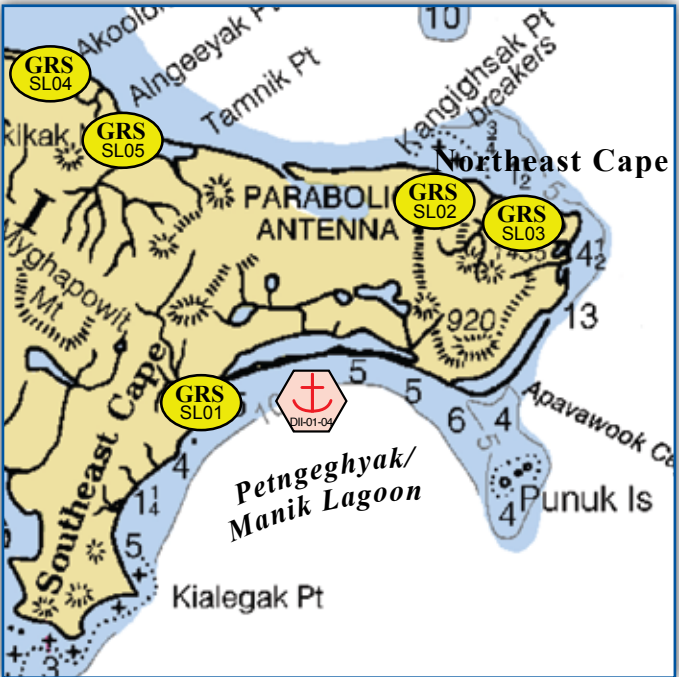
Site DII-01-01, Gambell.



Site DII-01-02, Savoonga.



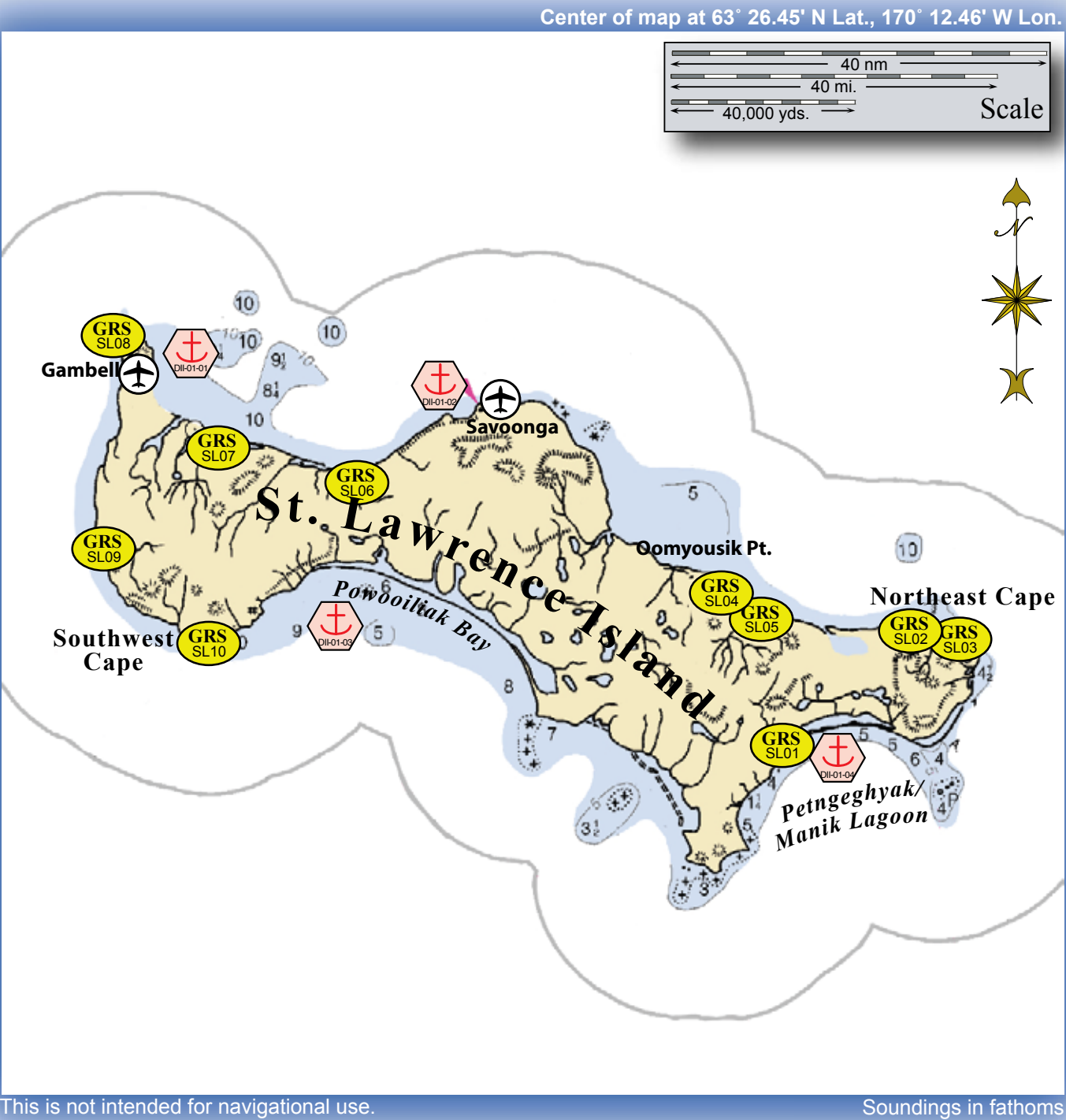
Site DII-01-03, Powoosilik Bay.



Site DII-01-04, Petngeghyak/Manik Lagoon.

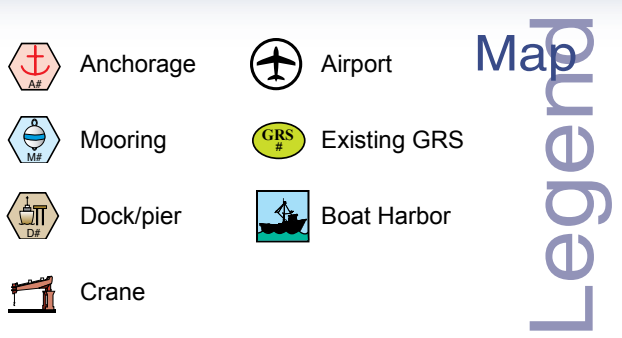
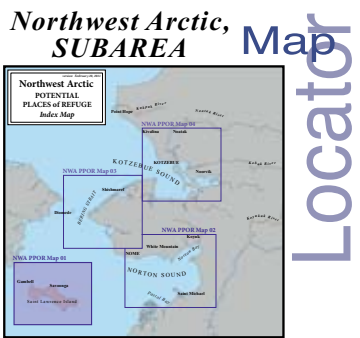
Stakeholders for PPOR Zone 01 of the Northwest Arctic Subarea			
Year-2011	Contact	Year-2011	Contact
Native Allotments	Dept. of the Interior-Regional Environmental Officer	City of Gambell	Mayor
Alaska Maritime Wildlife Refuge	Dept. of the Interior-Regional Environmental Officer	City of Savoonga	Manager
Alaska Department of Natural Resources	State Historic Preservation Officer	Alaska Eskimo Whaling Commission	Executive Director
St. Lawrence Island Economic Development Corporation	President	Alaska Dept. of Fish & Game	Resource Manager
Kawerak, Incorporated	Executive Director		

Potential Places of Refuge for Northwest Arctic Subarea



This is not intended for navigational use.

Soundings in fathoms



Northwest Arctic PPOR Map 01
USGS 1:1,534,076 Quadrangle Map Reference - Bering Sea Eastern Part Map 16006_1

Physical and Operational Characteristics for PPOR Map 01 of the Northwest Arctic Subarea-Saint Lawrence Island				
	Gambell Anchorage	Savoonga Anchorage	Powooiliak Bay	Petngeghyak / Manik Lagoon
ID Number	DII-01-01	DII-01-02	DII-01-03	DII-01-04
Location <i>(In the general area)</i>	63°40.57'N 171°33.62'W	63°38.41'N 171°34.27'W	63°13.07'N 171°49.88'W	62°59.42'N 169°14.27'W
Maximum Vessel Size	Deep Draft Vessels - lengths to 1000 ft. or greater, 40-60 ft. of draft, greater than 10,000 GT			
Type of Berthing	Anchorage			
Contact	N/A			
Navigational Approach	Approach from N, NE, E	Approach from N, NE	Approach from SW, S, SE	Approach from SW, S, SE, E
Minimum Water Depths <i>(MLLW)</i>	8 Fathoms	13 Fathoms	13 Fathoms	12 Fathoms
Maximum Vessel Draft	60 ft.			
Swing Room or Dock Face <i>(w/ dolphins)</i>	3 nm to shore	1.3 nm to shore	5 nm to shoal	7 nm to shoal
Bottom Type	Rocky	Mud	Mud, Rocky	Sand, Shells
Nearest Alternative Dock/Piers	168 nm to DII-02-02	143 nm to DII-02-02	190 nm to DII-02-02	132 nm to DII-02-02
Nearest Alternative Anchorage	25 nm to DII-01-02	25 nm to DII-01-01	60 nm to DII-01-04	60 nm to DII-01-03
Prevailing Winds	SW summer / NE winter	October to April N, NE - 17 knots / May to September variable 10 knots (max 34 knots)		
Currents	Current velocity at other places around St. Lawrence Island is generally less than 1 knot	NW 1 knot on flood / E 1.5 knots ebb	Current velocity at other places around St. Lawrence Island is generally less than 1 knot	
Tides	Varies from 1.2 ft. at Niyrakpak Lagoon entrance to 2.4 ft. at NE Cape			
Sea Conditions	9 fathoms with rock bottom 0.5 offshore mile offshore on either side of point.	In the Bering Sea, the winds are most frequent from N and NE directions from October through May and are variable, with predominant winds from the directions in the S half of the compass during the remaining months		
Shelter from Severe Storms	Sheltered from S, W winds / Exposed N-E / S-N	Exposed to W, E	Sheltered from N, W winds / Exposed S, E	Sheltered from N, W winds / Exposed S, E
Fog	Bering Sea: in general, sea fog or haze drops visibilities to 7 miles or less 13 - 20 days per month in midsummer.			
Ice	Ice-free July to October			

Site Considerations for PPOR Zone 01 of the Northwest Arctic Subarea-Saint Lawrence Island					Site ID Number & Vessel Size Classification
	Gambell Anchorage	Savoonga Anchorage	Powooiliak Bay	Petngeghyak / Manik Lagoon	
ID Number	DII-01-01	DII-01-02	DII-01-03	DII-01-04	
Human Health & Safety					DII = Deep Draft Vessels lengths up to 1000 feet, 40-60 feet of draft, greater than 10,000 GT
Community-distance to (nm)	Gambell - 7 nm/ pop. 681	Savoonga - 1.3 nm/ pop. 671	Gambell - 50 nm/ pop. 681	Savoonga - 70 nm/ pop. to 671	
Health Care Facilities	Bessie A Kaningok Health Clinic: 907-985-5012	Savoonga Clinic: 907-984-3311	Bessie A Kaningok Health Clinic: 907-985-5012	Savoonga Clinic: 907-984-3311	
Natural Resources Considerations					
Fish & Wildlife	High density seabird & shorebird nesting, Shorebird migration area, Waterfowl concentrations, Walrus haulout	High density seabird nesting, waterfowl concentrations, walrus haulout	High density seabird & shorebird nesting, Shorebird migration area, Waterfowl concentrations, spotted seals haulout, Polar bears	High density seabird & shorebird nesting, Shorebird migration area, Waterfowl concentrations, spotted seals haulout, Walrus haulout	DI = Deep Draft Vessels lengths up to 1000 feet, 20-40 feet of draft, greater than 10,000 GT
Threatened & Endangered Species	Walrus (candidate species), Spectacled & Steller's Eiders (threatened)	Spectacled & Steller's Eiders (threatened)	Spectacled & Steller's Eiders (threatened), Polar bears (candidate)	Walrus (candidate species), Spectacled & Steller's Eiders (threatened), Polar bears (threatened)	
Sensitive Areas	Not Designated - threatened or endangered species present		Spectacled eider critical habitat-winter, Barrier islands designated polar bear critical habitat		
Other Stakeholder Considerations					
Fisheries	Groundfish, Crab				L= Light Draft Vessel up to 450 feet in length, draft up to 20 feet
Historic Properties	Historic properties are present throughout the area.				
Subsistence	High level of subsistence activities				
Tourism/Recreation	Local recreation				
Waterfront Public Facilities/Parks	None				
Waterfront Private Facilities	None				
Response and Salvage Resource Consideration					S = A shallow draft vessel less than 300 Gross Tons, has a draft less than 15 ft., LOA less than 200 ft
Ability to Boom Vessel	No				
Geographic Response Strategies	SL-06, 07, 08		None (2011)	SI-01	
Closest Alternative Place of Refuge for same sized vessel	25 nm to DII-01-02	25 nm to DII-01-01	60 nm to DII-01-04	60 nm to DII-01-03	