



SPAR PROGRAMS

Contaminated Sites
Industry Preparedness
Prevention and Emergency Response
Response Fund Administration

INFORMATION

Report a Spill
About Us
Recent Spill Responses
Approvals and Permits
Guidance and Forms

SIX-MILE RICHARDSON HIGHWAY AREAWIDE GROUNDWATER INVESTIGATION



Summary Date: August 2009

[View detailed information from database on this site.](#)

Status: Active

Database Name: Walsky Property

Location: Six-mile Richardson Highway, Fairbanks, AK

Latitude: 64.797441

Longitude: -147.552356

DEC Contaminated Sites Contact: [Ann Farris](#), Project Manager - 907- 451-2104

Click on photos or maps for larger versions.

DESCRIPTION

Since 1995, DEC has monitored the ground water quality in the Six Mile Richardson Highway area. That year trichloroethene (TCE) was discovered in 17 residential wells, with concentrations exceeding 3.5 micrograms per liter ($\mu\text{g/L}$). This concentration is 70% of the public safe drinking water maximum contaminant level of 5 $\mu\text{g/L}$ for TCE and was established as an action level for the installation of household water treatment systems. The monitoring consists of sampling a series of permanent monitoring wells and a selected number of private residential wells to track the location and concentration of an area-wide trichloroethene (TCE) ground water plume. The TCE concentrations have gradually decreased since 1995 as the result of natural breakdown. Annual testing has continued for those residential wells that have TCE concentrations above the action level. In addition, DEC pays for the annual maintenance costs for the water treatment systems. Most treatment systems were installed in 1995/1996.

Please refer to previous fact sheets, [found below](#), for more historical information.

Nine residential wells were scheduled for sampling in the fall 2007. One resident declined sampling because their well was no longer connected and another residence no longer had a functional water well. A table in the December 2007 fact sheet ([see below](#)) presents the results for the seven residences that were sampled. Only two residential wells currently have TCE concentration at or slightly above the maximum contaminant level of 5 $\mu\text{g/L}$. These results are consistent with the 2006 sampling results, indicating the contamination is not increasing.

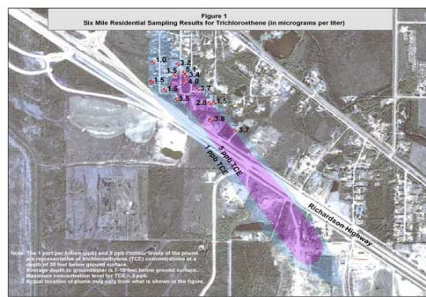
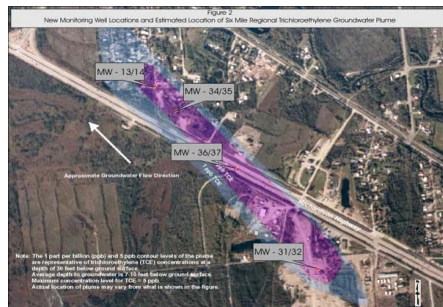
Groundwater sampling from May of 2009 is summarized in a map, available in the downloadable file at the end of this paragraph. The solid red line surrounds the area where TCE in groundwater is above the maximum contaminant level of 5 $\mu\text{g/L}$. The area between the dotted and solid lines has TCE in concentrations between 1 and 5 $\mu\text{g/L}$. ([PDF 762K](#))

MORE INFORMATION

- ▶ Fact sheet, December 2007 ([PDF 19K](#))
- ▶ Fact sheet, August 2006 ([PDF 19K](#))
- ▶ Fact sheet, January 2005 ([PDF 622K](#))
- ▶ Fact sheet, January 2004 ([PDF 106K](#))
- ▶ Fact sheet, January 2003 ([PDF 87K](#))
- ▶ Fact sheet, February 2002 ([PDF 681K](#))
- ▶ Fact sheet, January 2001 ([PDF 79K](#))
- ▶ Fact sheet, December 1999 ([PDF 23K](#))
- ▶ Fact sheet, August 1999 ([PDF 81K](#))

Figure 2 - Contaminated Groundwater Plume, pre-2007

Figure 2 - Sampling Results, pre-2007



[Glossary/Acronyms](#) [Site Map](#) [Commissioner](#) [Public Notices](#) [External Links](#)

Department of Environmental Conservation
Division of Spill Prevention and Response
410 Willoughby Ave., Ste. 302
P.O. Box 111800
Juneau, AK 99811-1800

[State of Alaska](#) [myAlaska](#) [My Government](#) [Resident](#) [Business in Alaska](#) [Visiting Alaska](#) [State Employees](#)

State of Alaska © 2011 Webmaster

