

Figure 2-1. Port site storage and conveyance features map

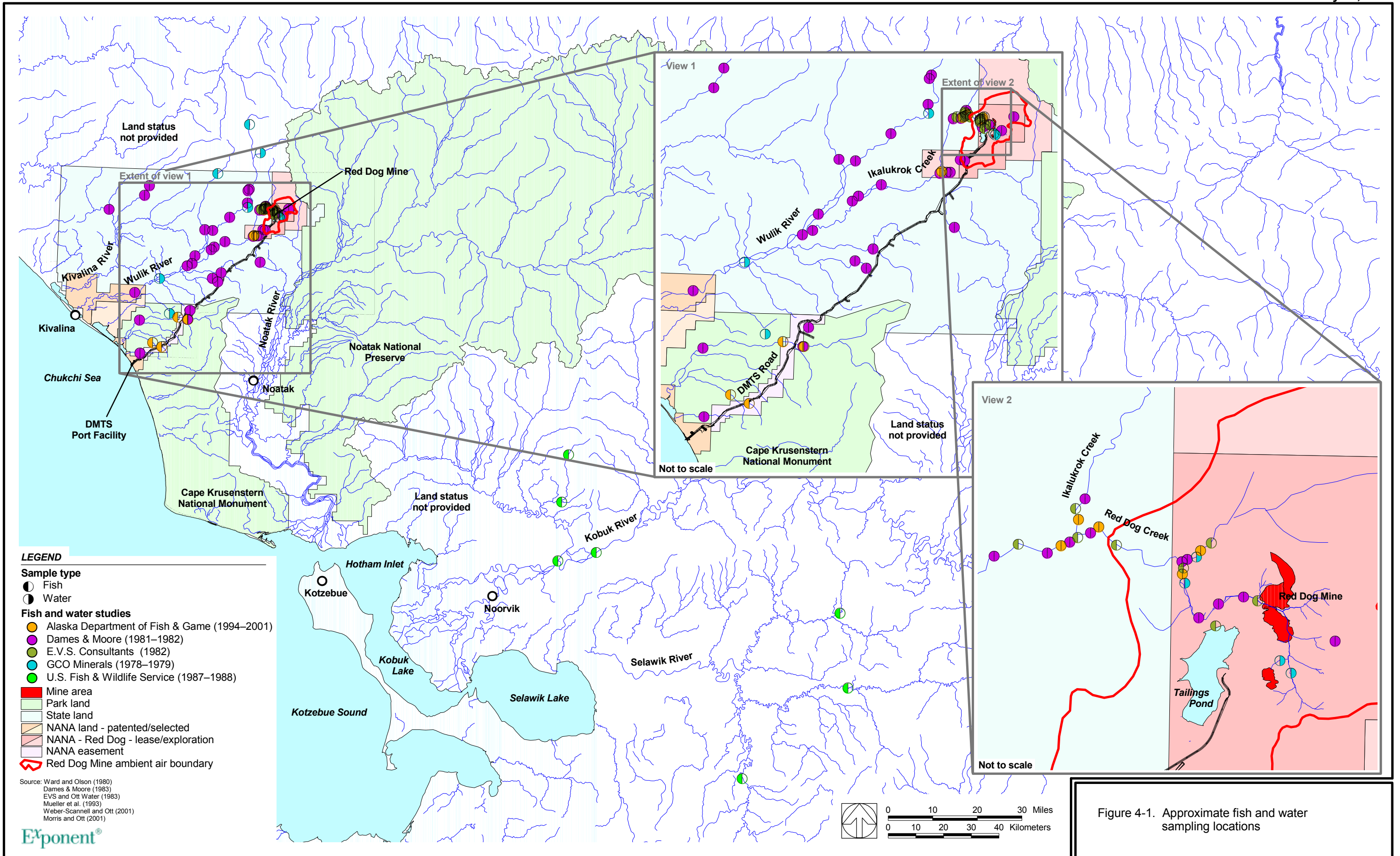


Figure 4-1. Approximate fish and water sampling locations



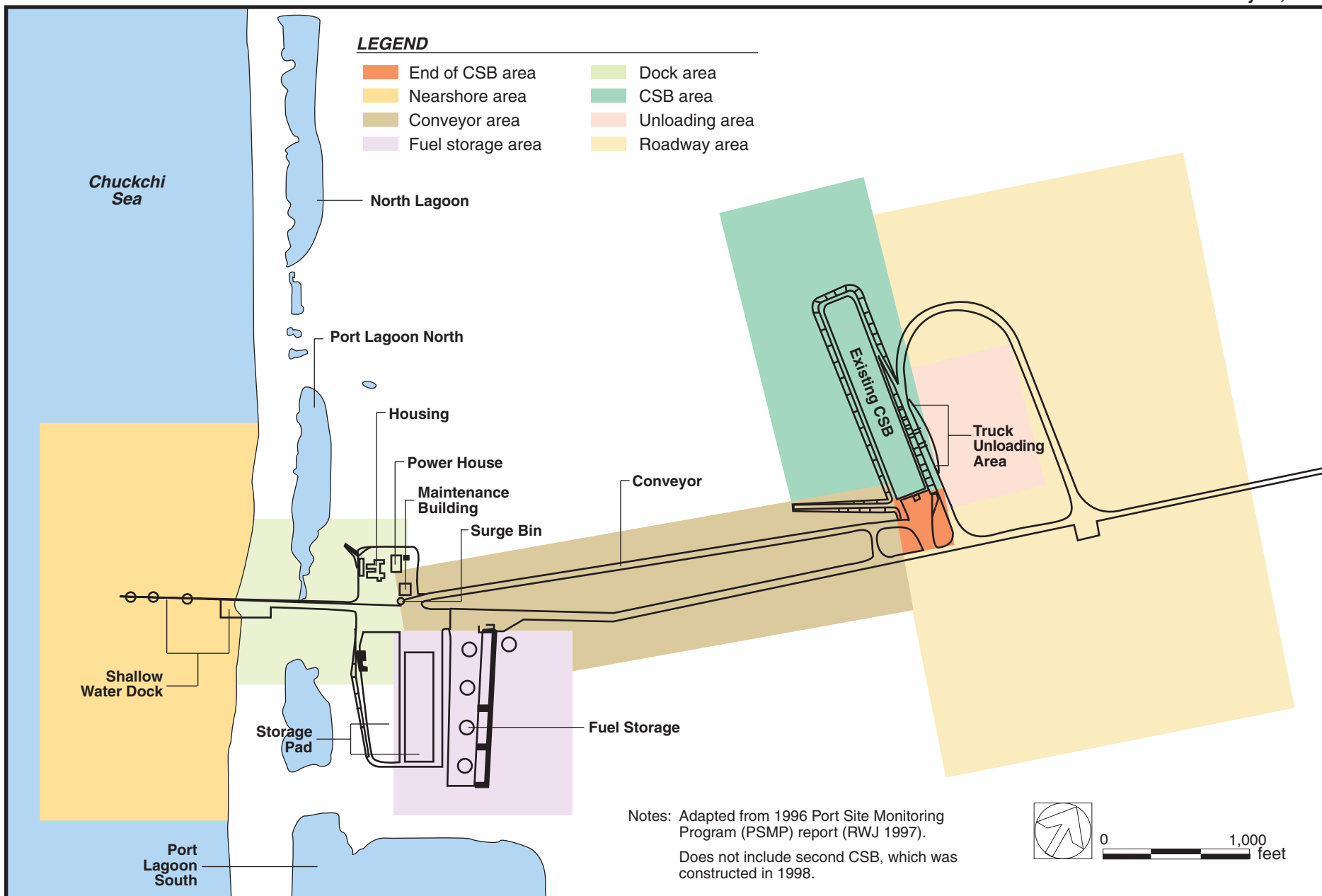


Figure 4-2. General areas of soil, water, and sediment sampling in the 1990–1996 PSMP

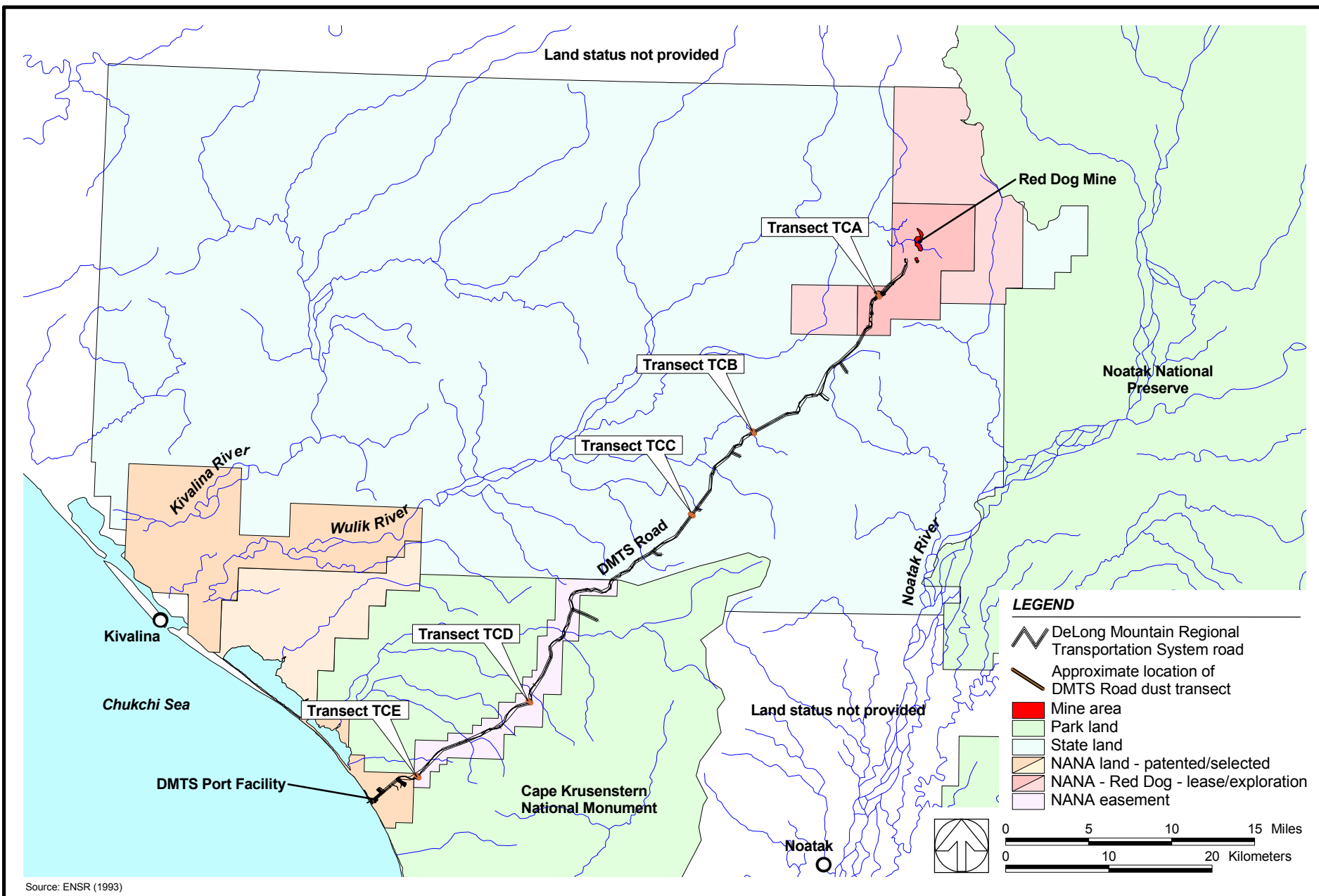


Figure 4-3. Soil and water transect locations on DMTS road, samples collected by ENSR in 1991 and 1992



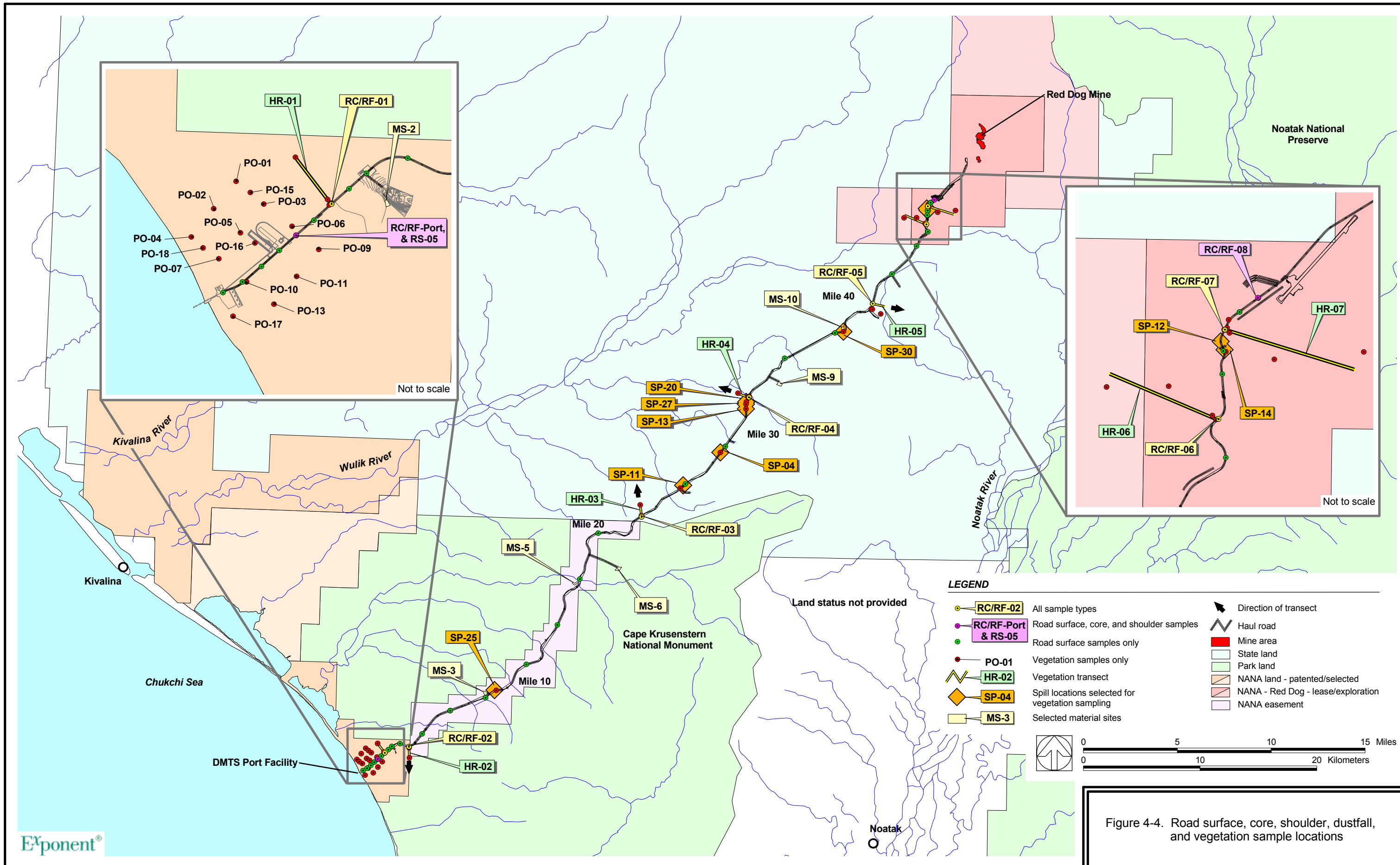
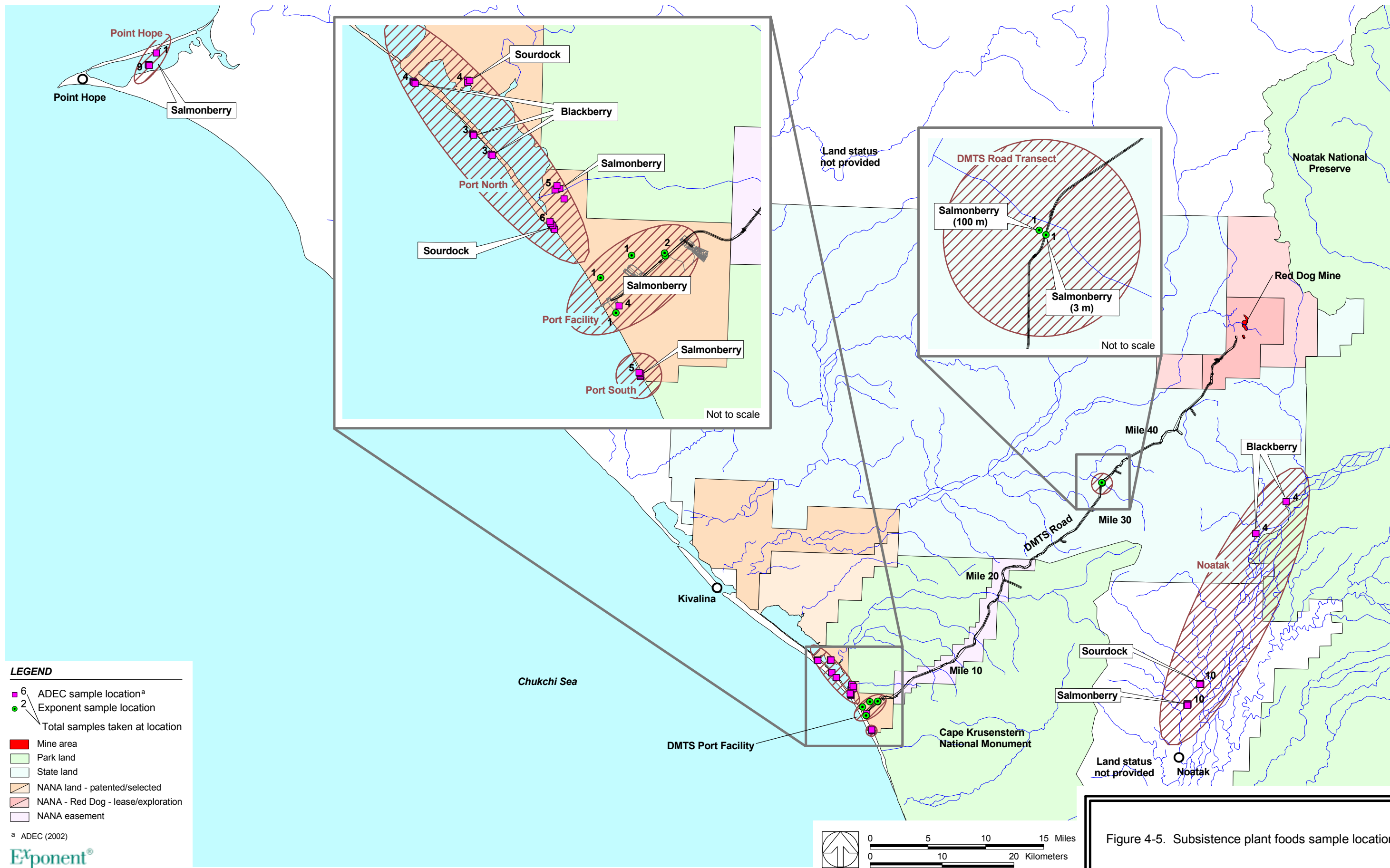


Figure 4-4. Road surface, core, shoulder, dustfall, and vegetation sample locations





- LEGEND**
- 6 ADEC sample location<sup>a</sup>
  - 2 Exponent sample location
  - Total samples taken at location
  - Mine area
  - Park land
  - State land
  - NANA land - patented/selected
  - NANA - Red Dog - lease/exploration
  - NANA easement

<sup>a</sup> ADEC (2002)

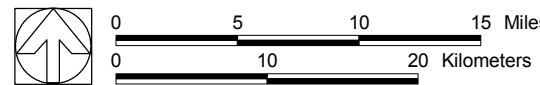
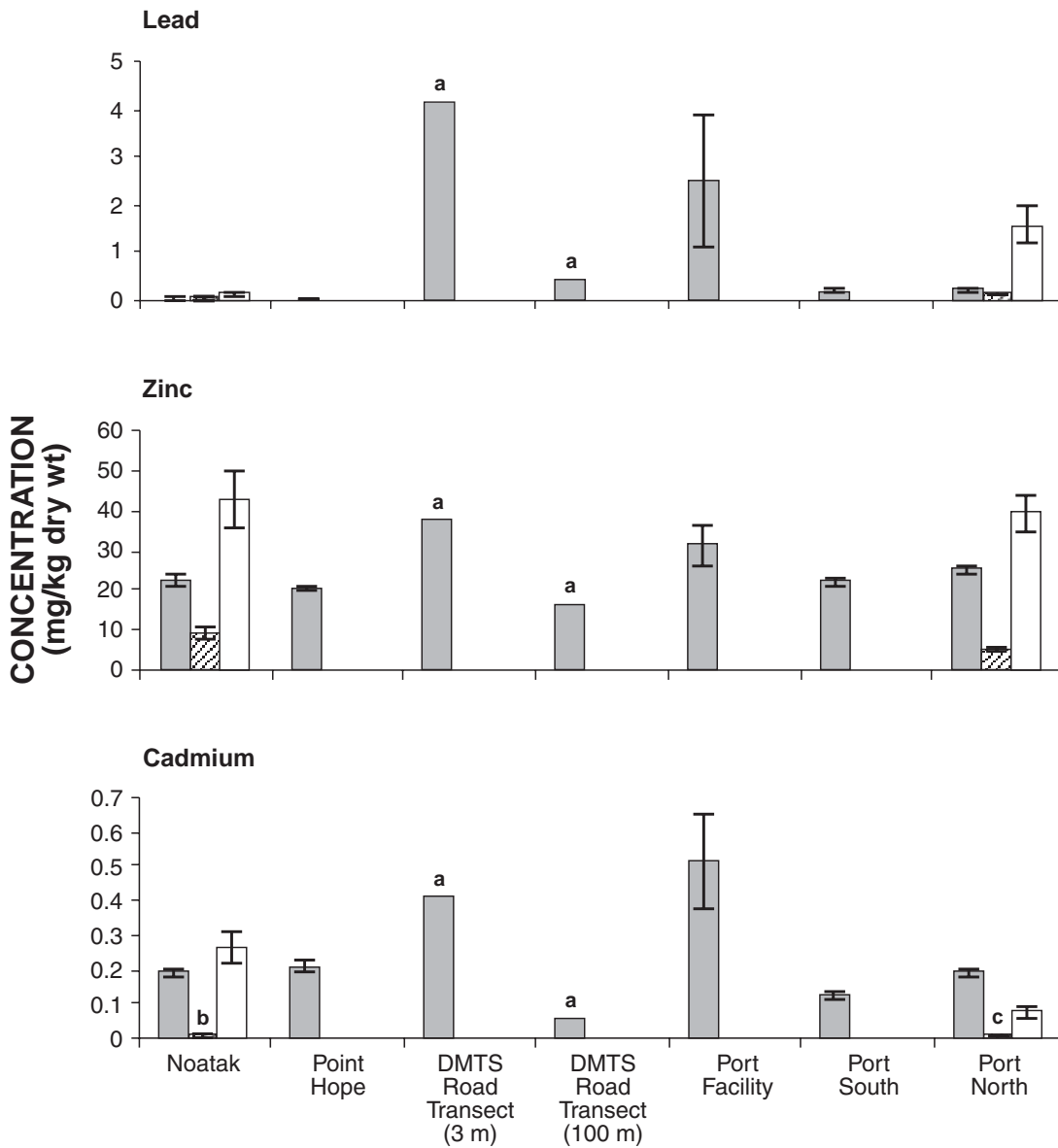


Figure 4-5. Subsistence plant foods sample locations



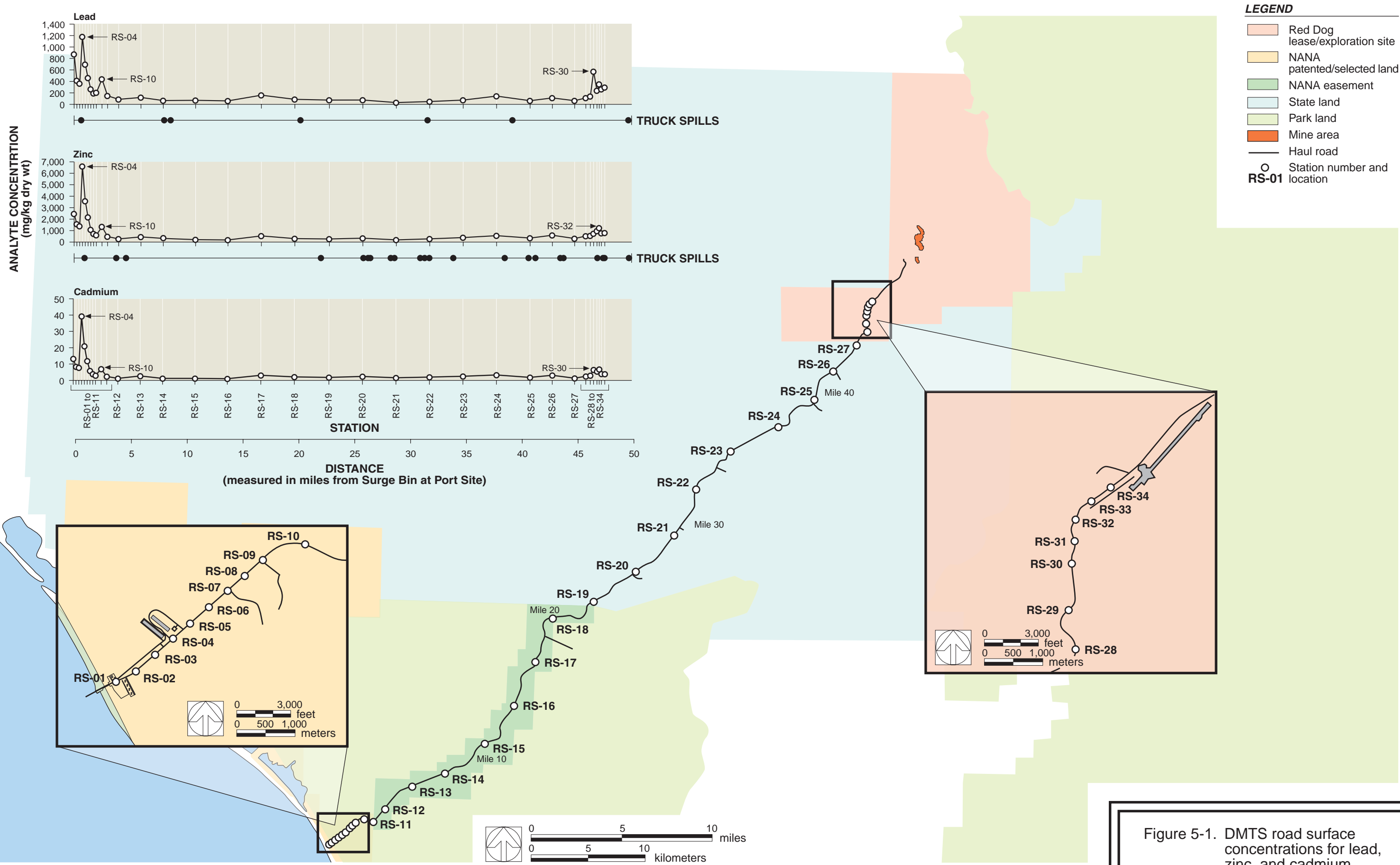
**LEGEND**

- Salmonberry
- ▨ Blackberry
- Sourdock

I Means and standard errors for samples collected by Exponent and ADEC in 2001. Means include undetected values at one half the detection limit.

Note: a Single sample  
 b Undetected in 7 out of 8 blackberry samples  
 c Undetected in 8 out of 10 blackberry samples

Figure 4-6. Metals concentrations in subsistence plant foods samples





**LEGEND**

- Station number and location
- PO-01
- Haul road

<sup>a</sup> Average of two replicates for moss

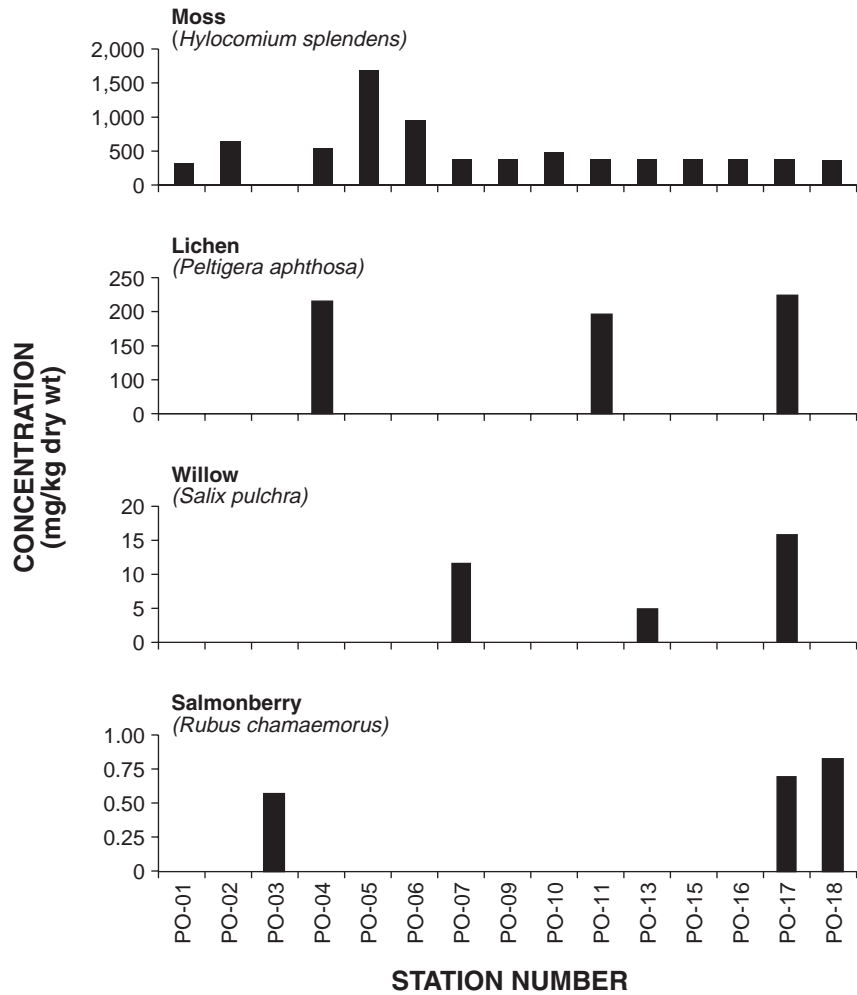
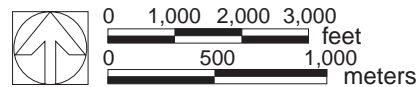
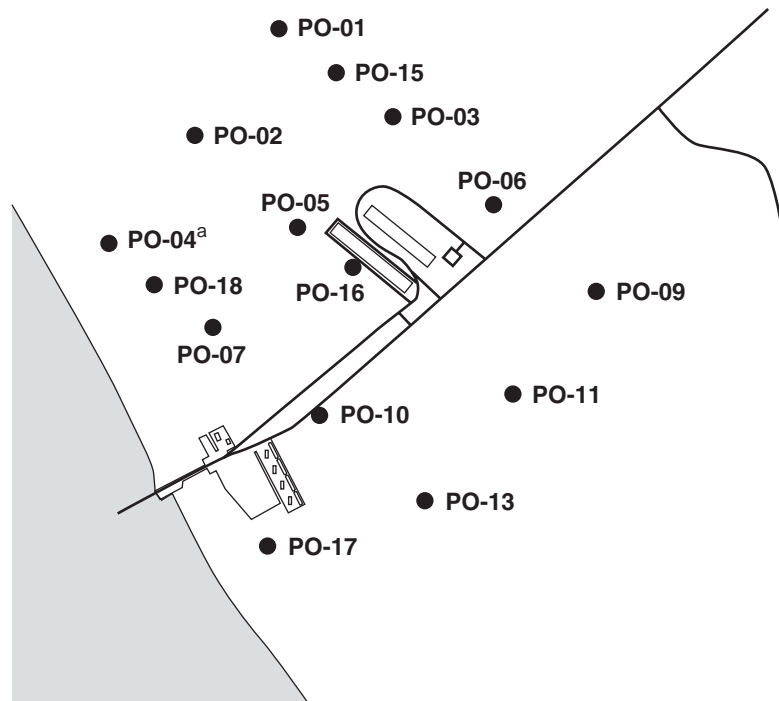


Figure 5-2. Port site vegetation samples for lead

**LEGEND**

- Station number and location
- PO-01
- Haul road

- a Average of two replicates for moss
- b Estimated values

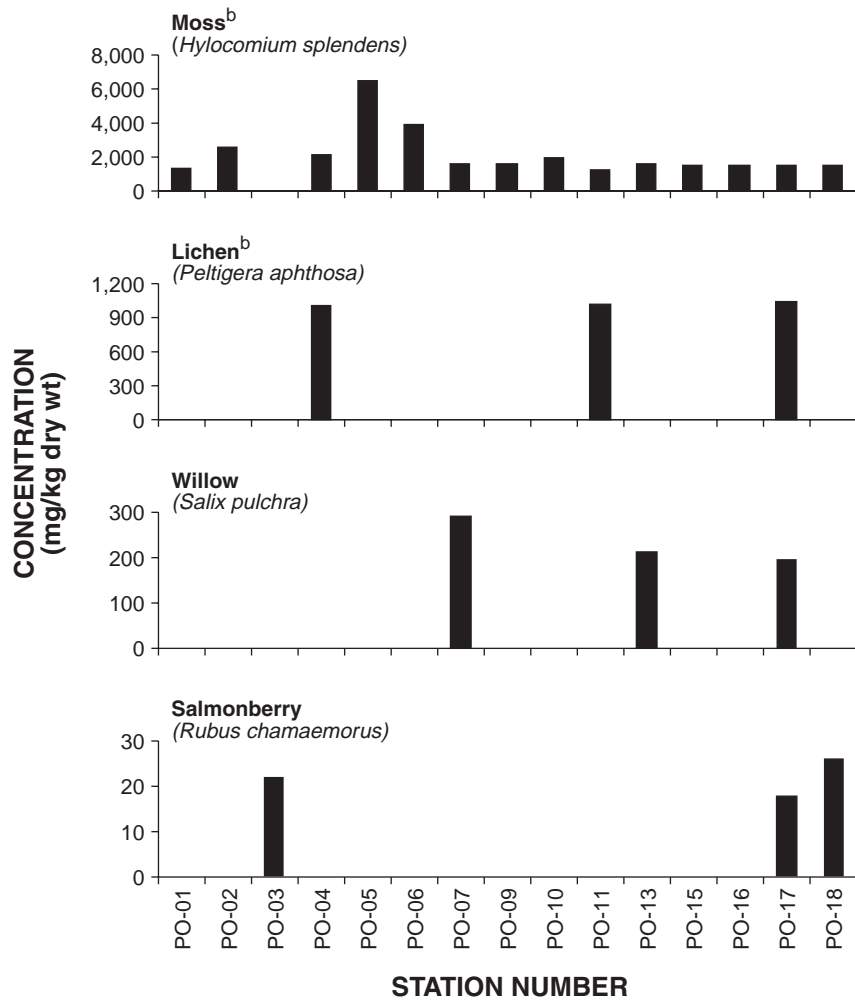
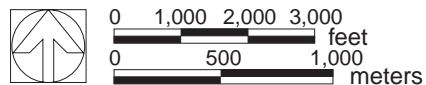
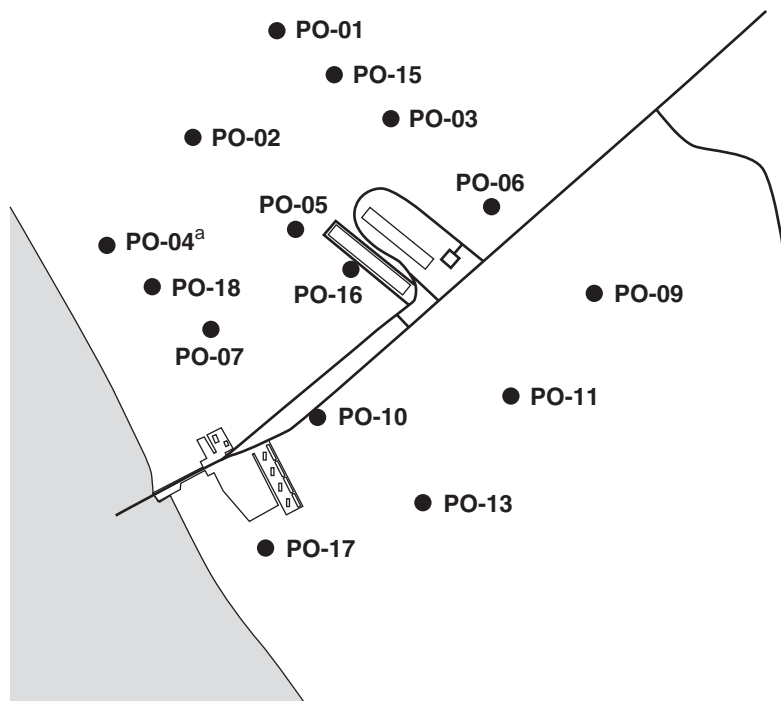


Figure 5-3. Port site vegetation samples for zinc

**LEGEND**

- Station number and location
- PO-01
- Haul road

<sup>a</sup> Average of two replicates for moss

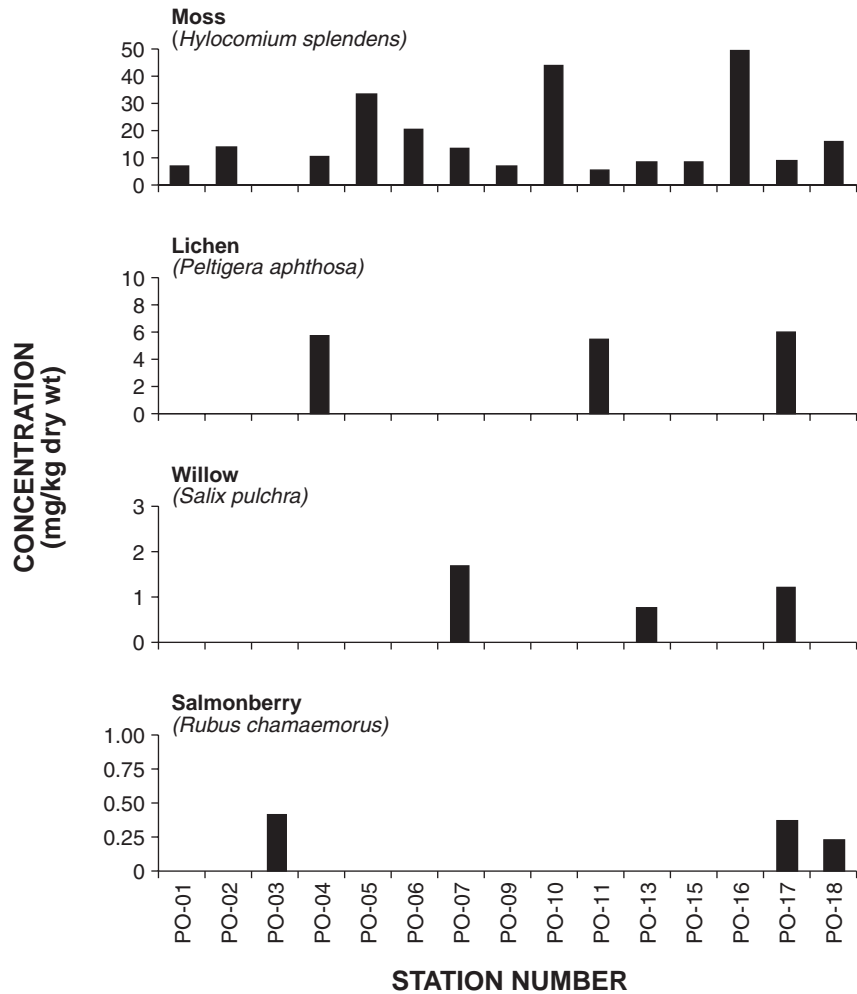
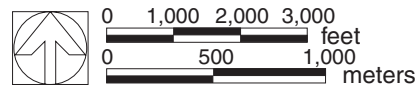
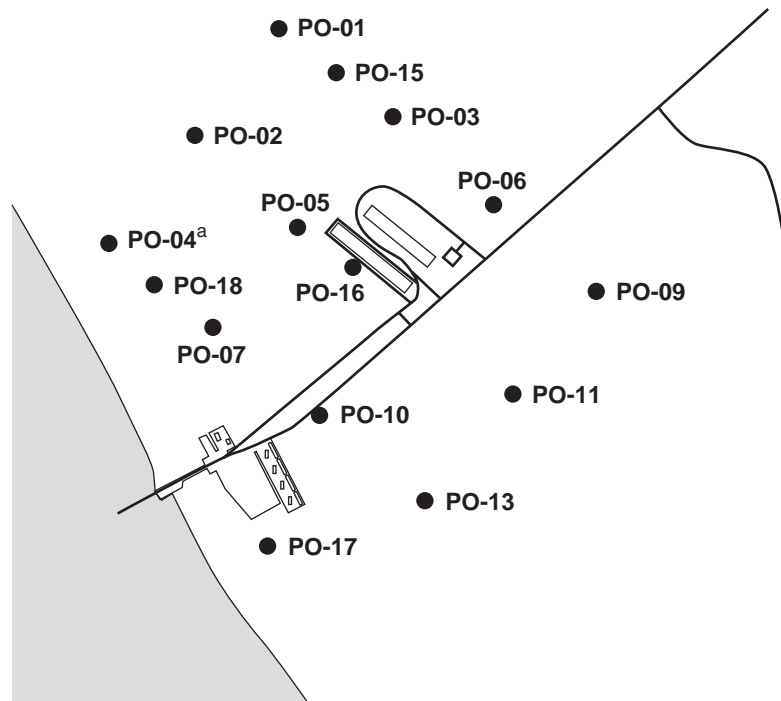


Figure 5-4. Port site vegetation samples for cadmium

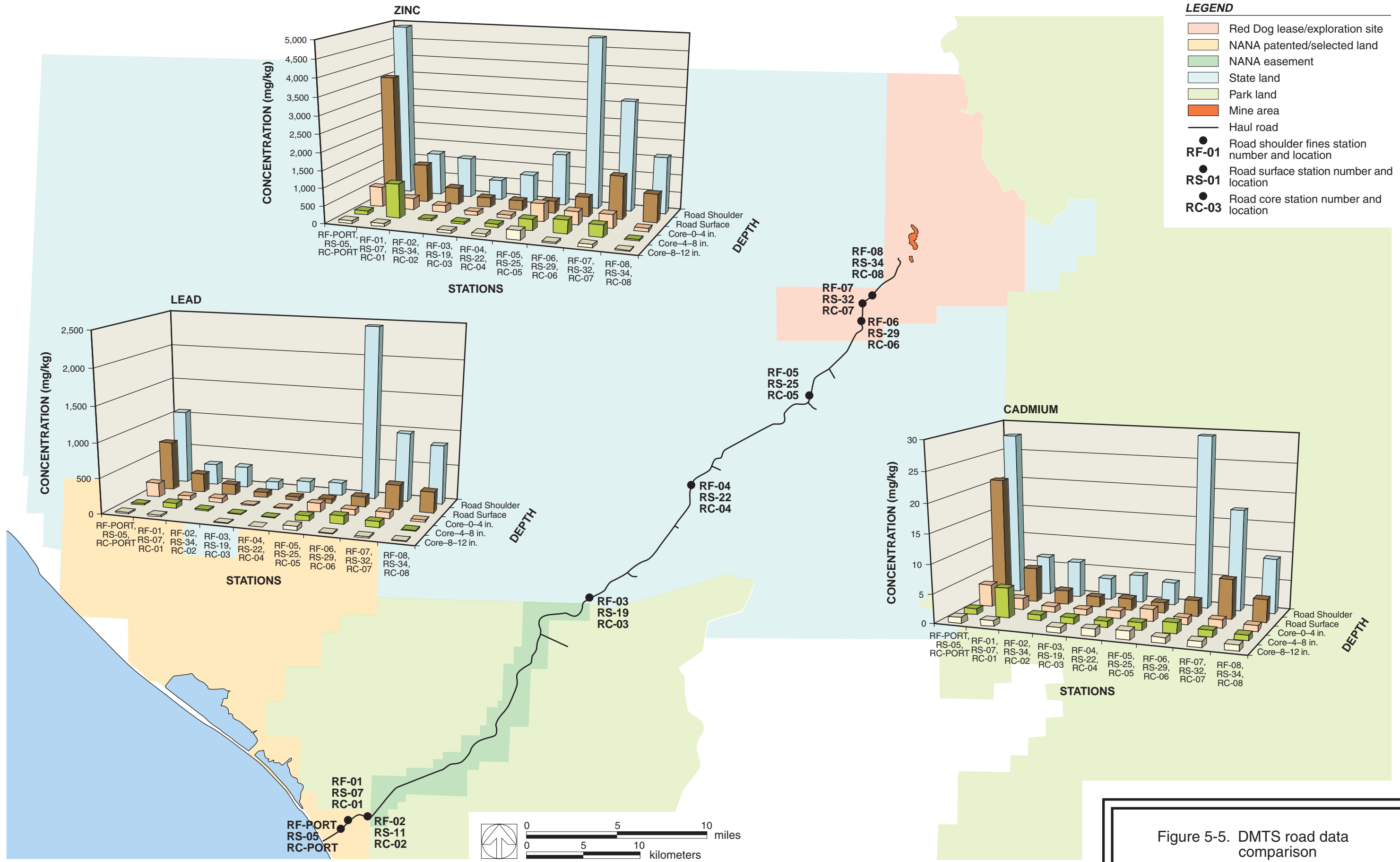
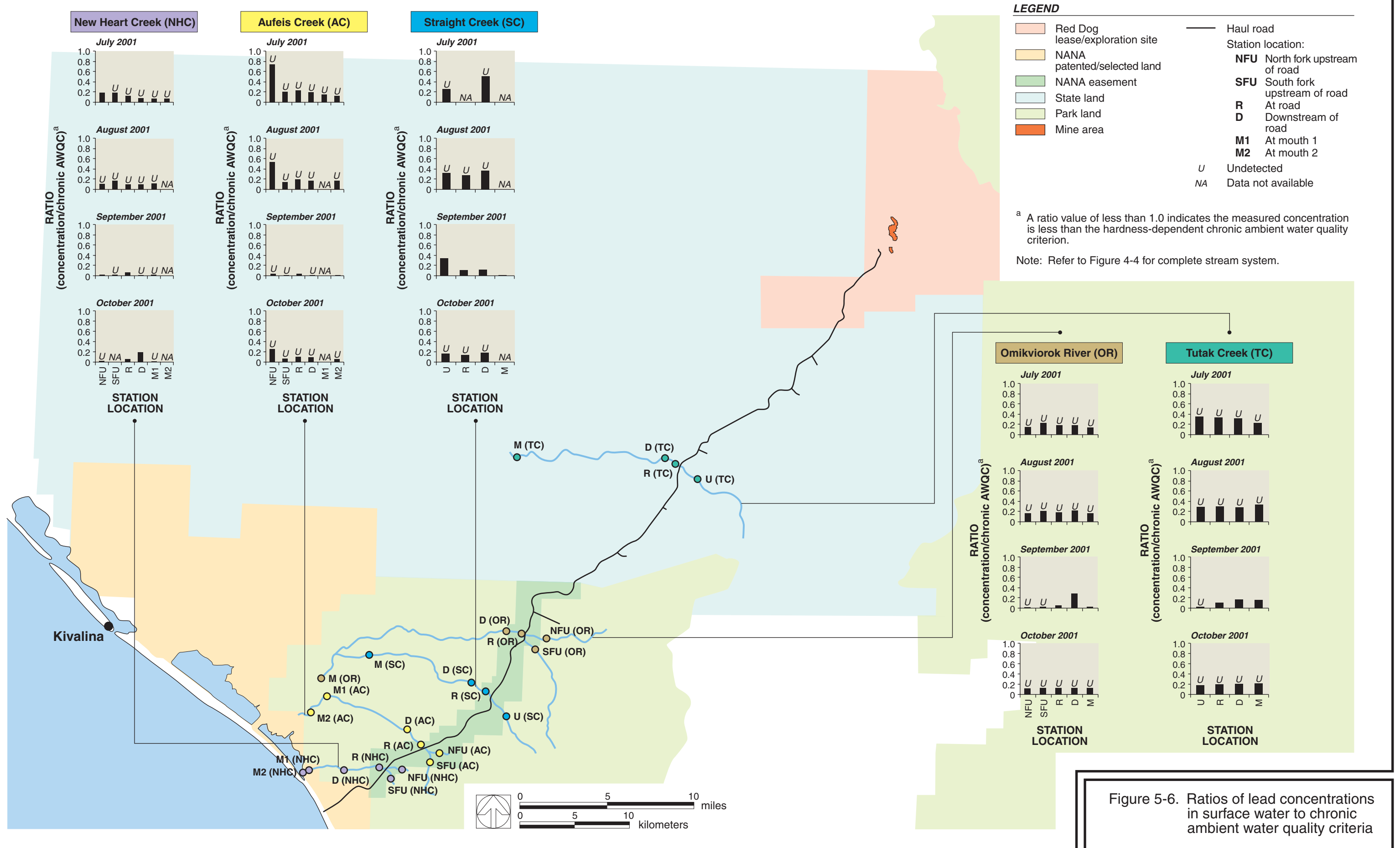


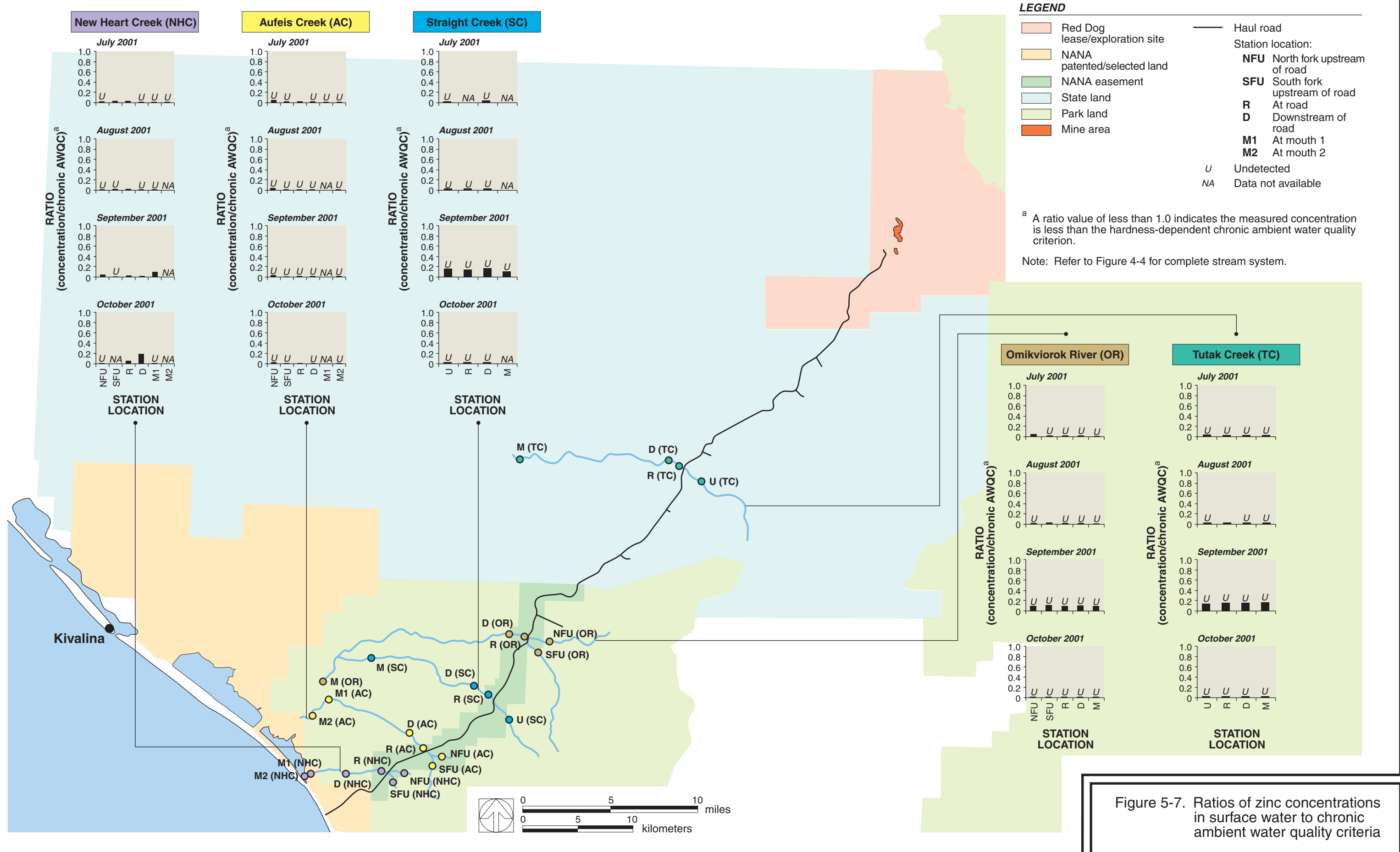
Figure 5-5. DMTS road data comparison



<sup>a</sup> A ratio value of less than 1.0 indicates the measured concentration is less than the hardness-dependent chronic ambient water quality criterion.

Note: Refer to Figure 4-4 for complete stream system.





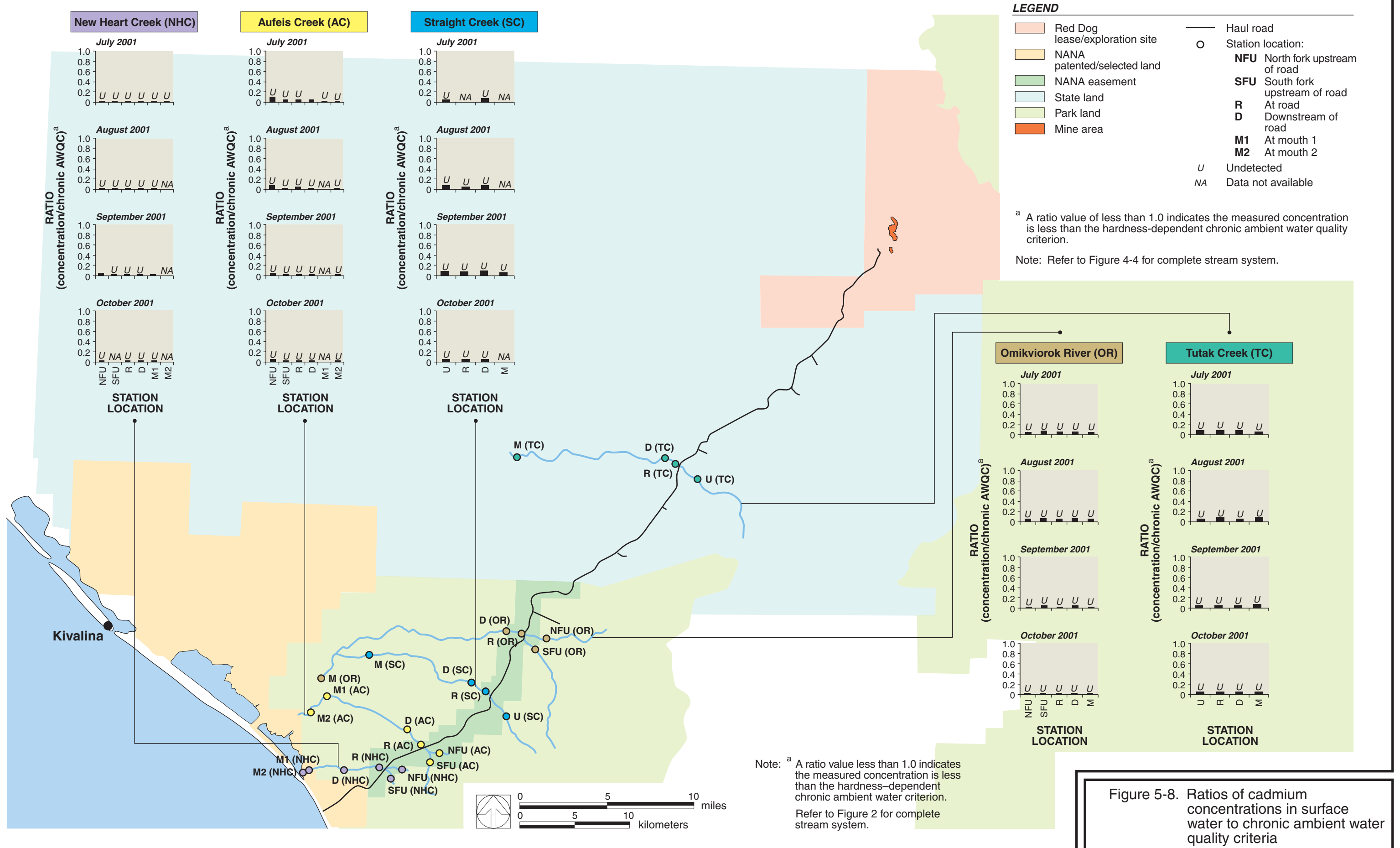


Figure 5-8. Ratios of cadmium concentrations in surface water to chronic ambient water quality criteria

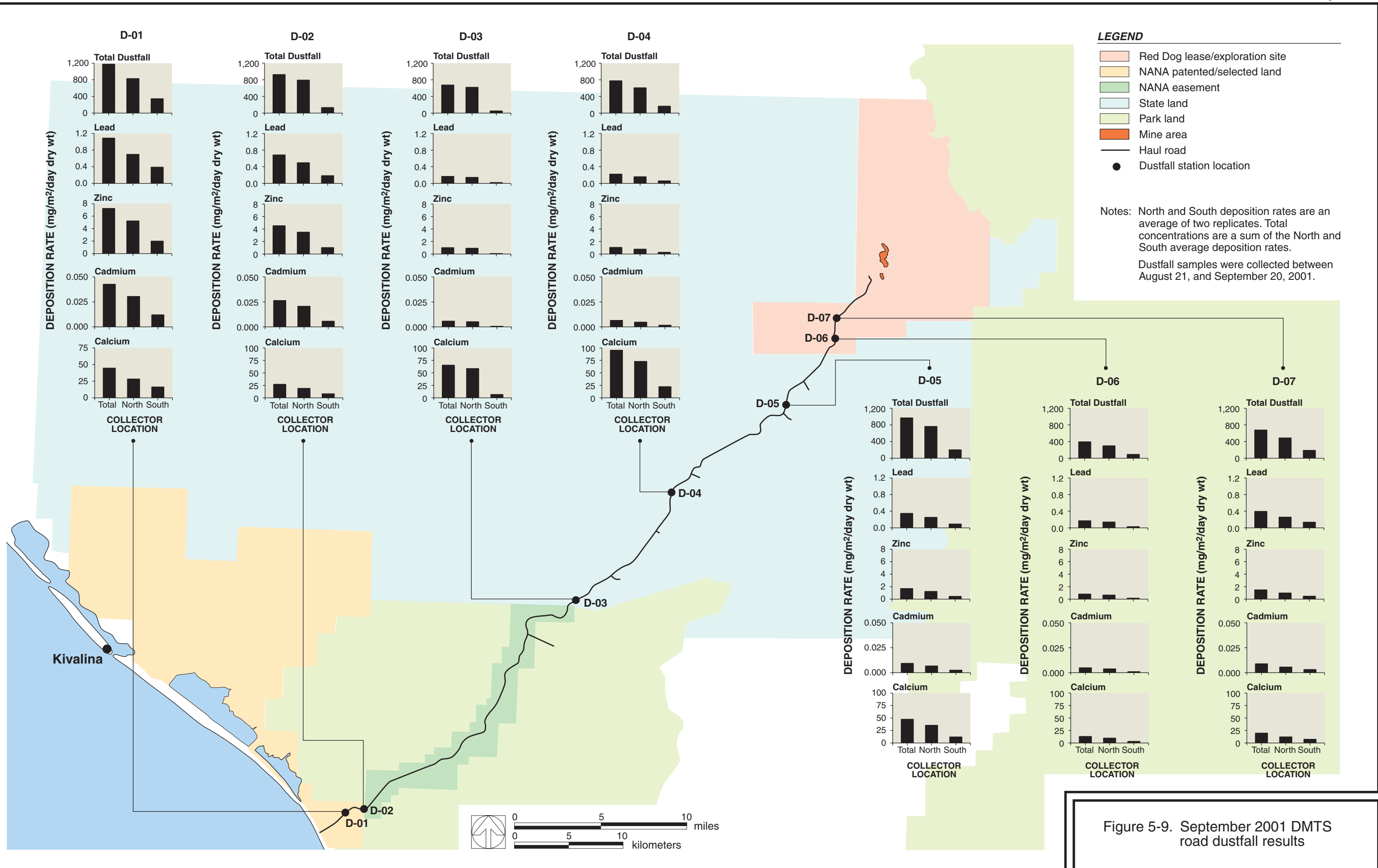


Figure 5-9. September 2001 DMTS road dustfall results

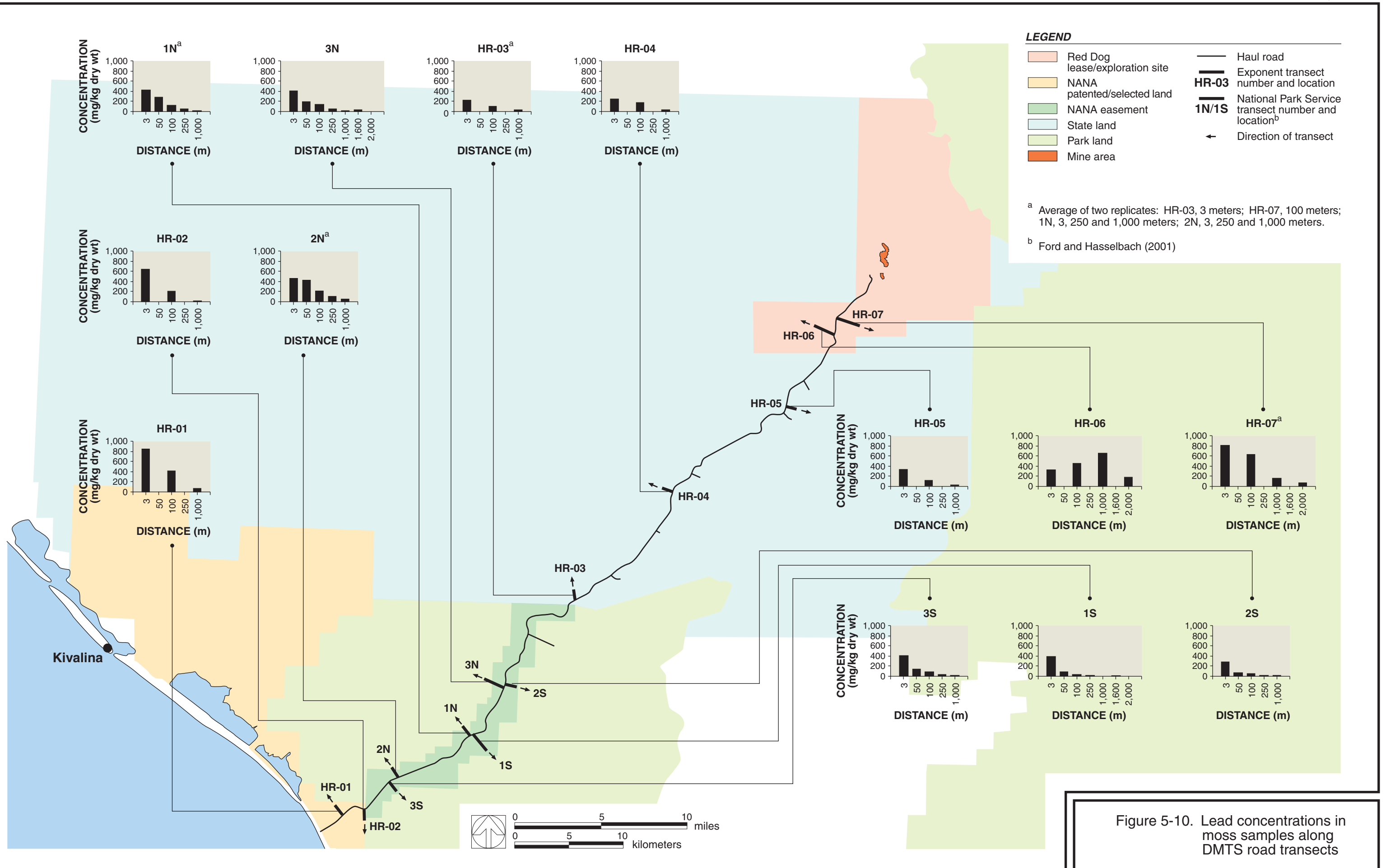
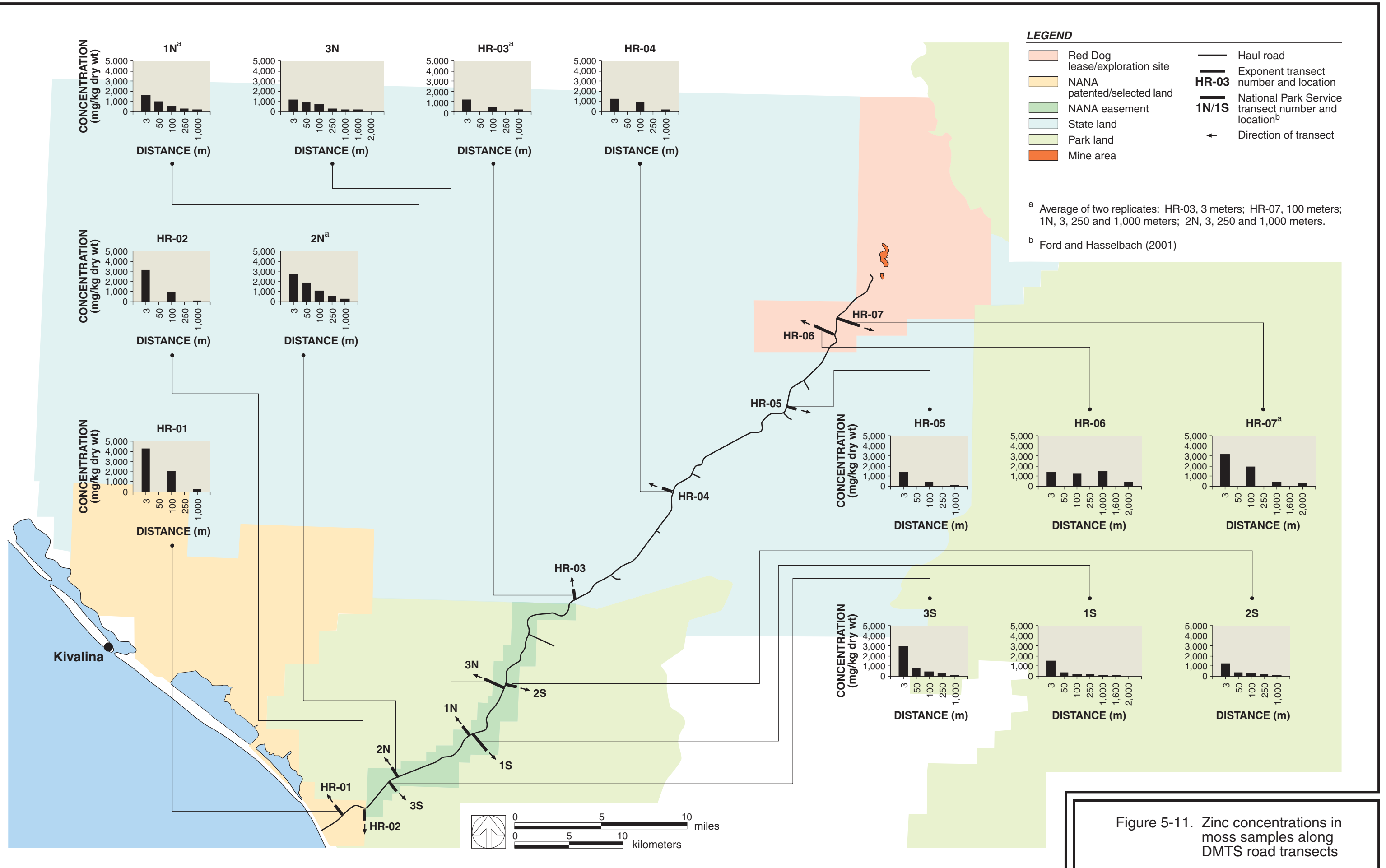
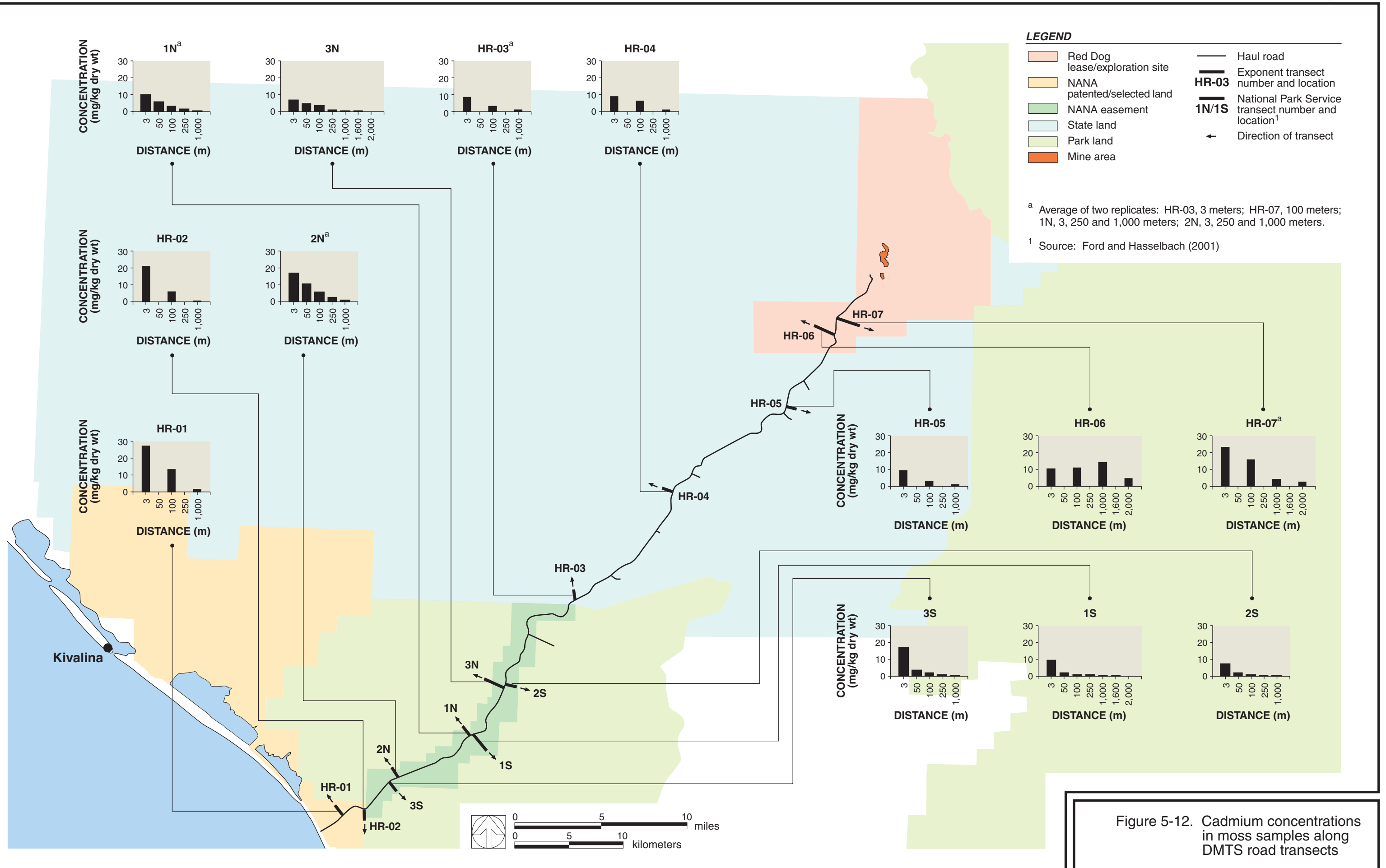


Figure 5-10. Lead concentrations in moss samples along DMTS road transects







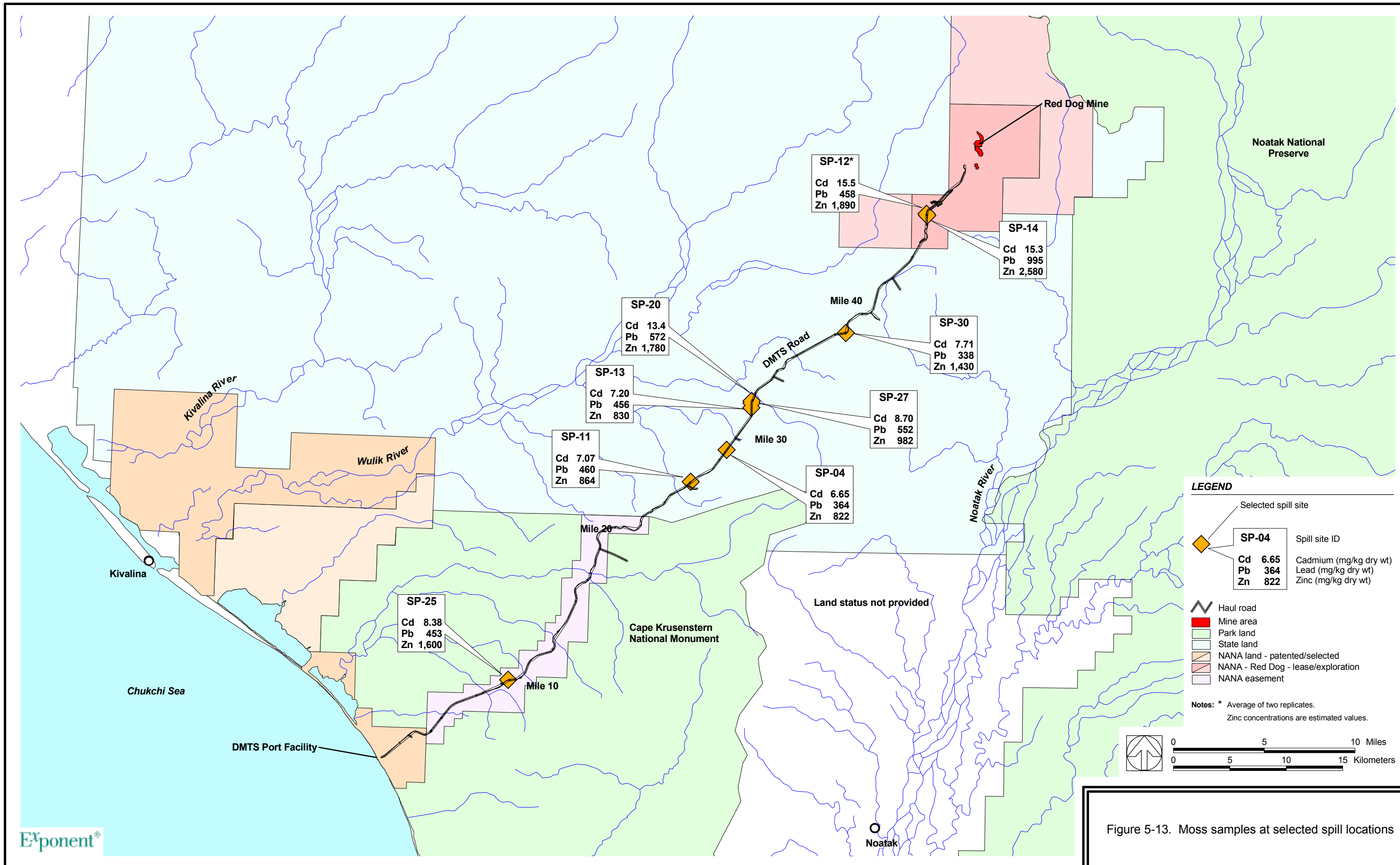


Figure 5-13. Moss samples at selected spill locations

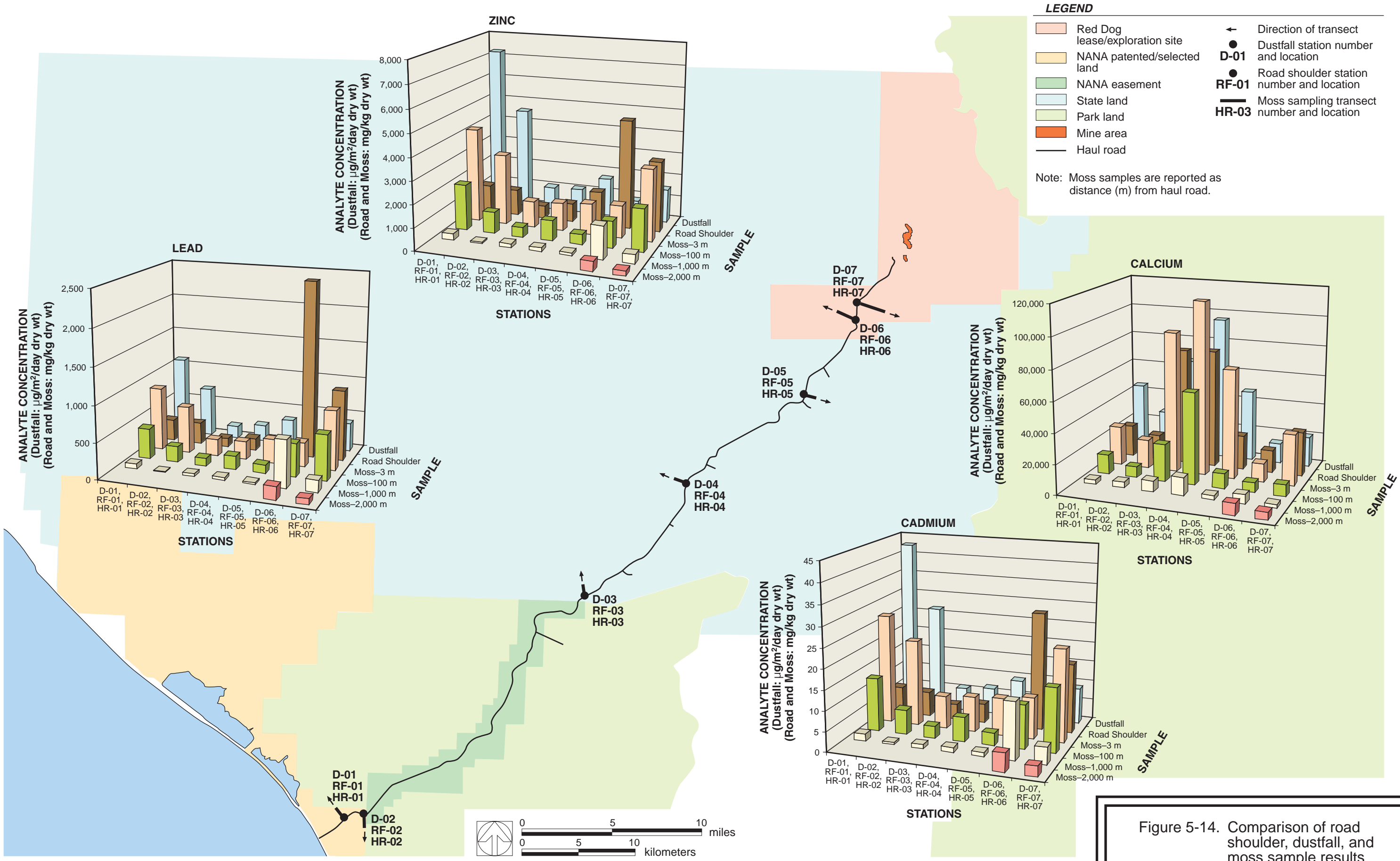


Figure 5-14. Comparison of road shoulder, dustfall, and moss sample results

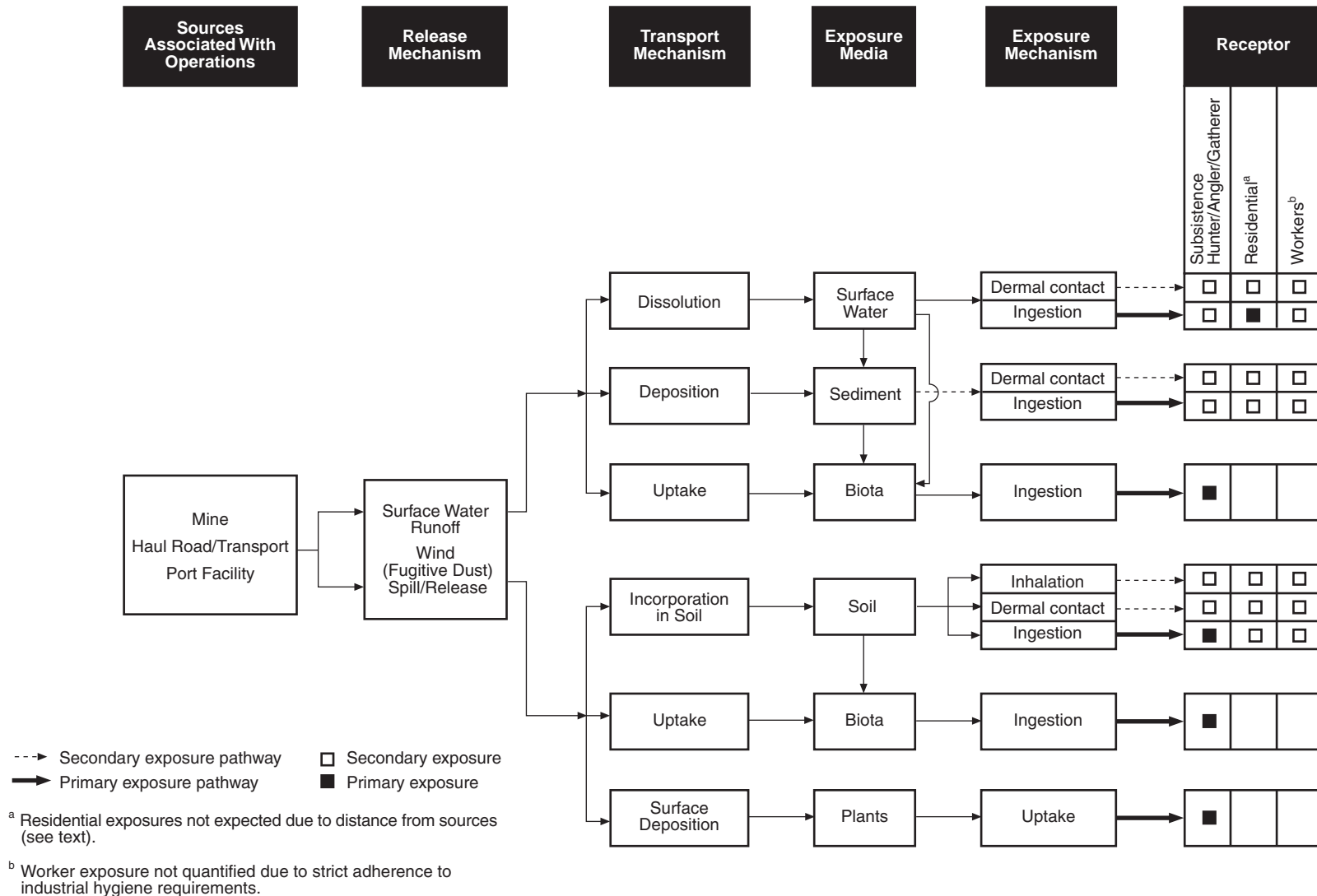


Figure 6-1. Conceptual site model for human receptors near Red Dog operations

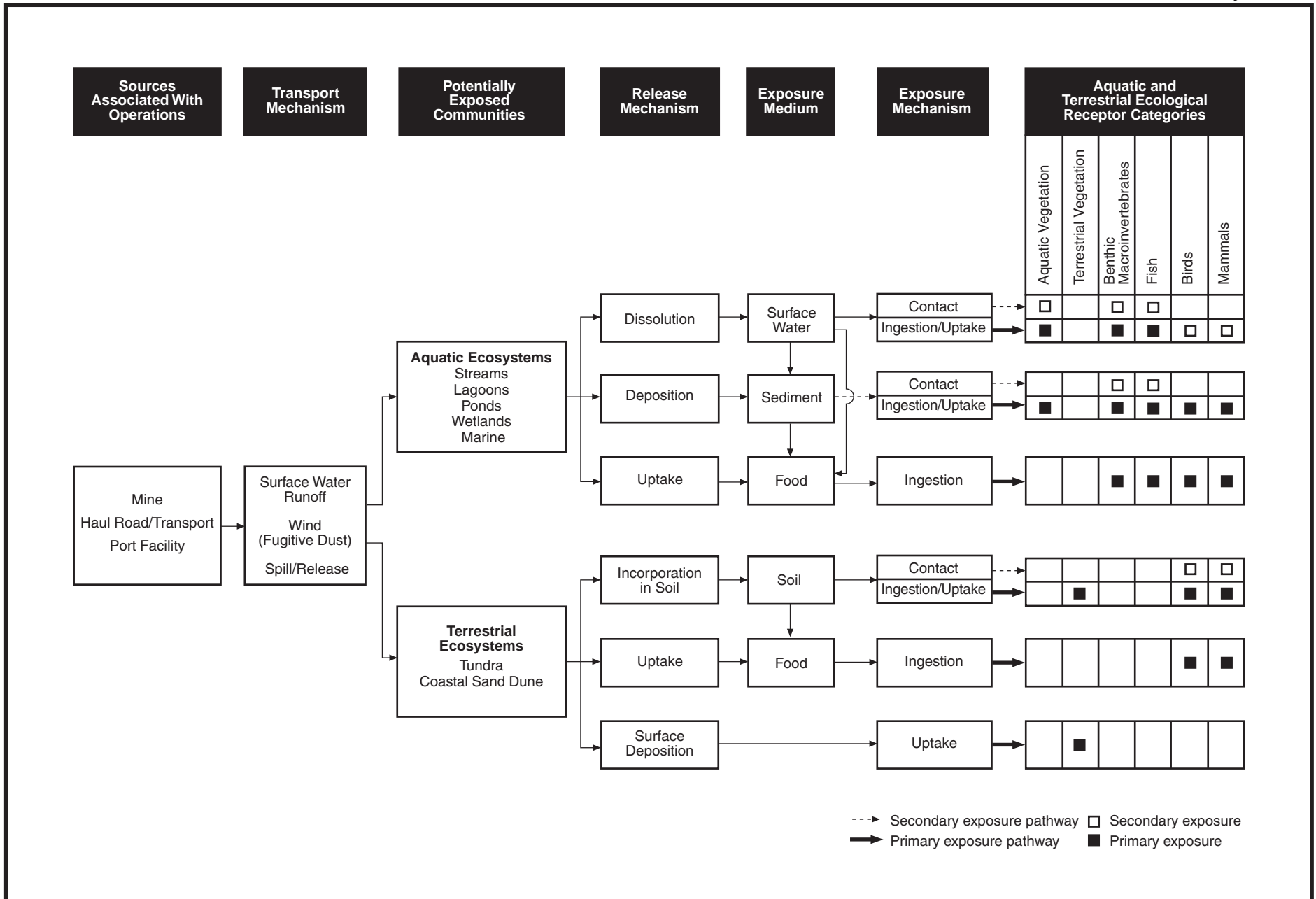


Figure 6-2. Conceptual site model for ecological receptors near Red Dog operations



## **Part C Figure**

---

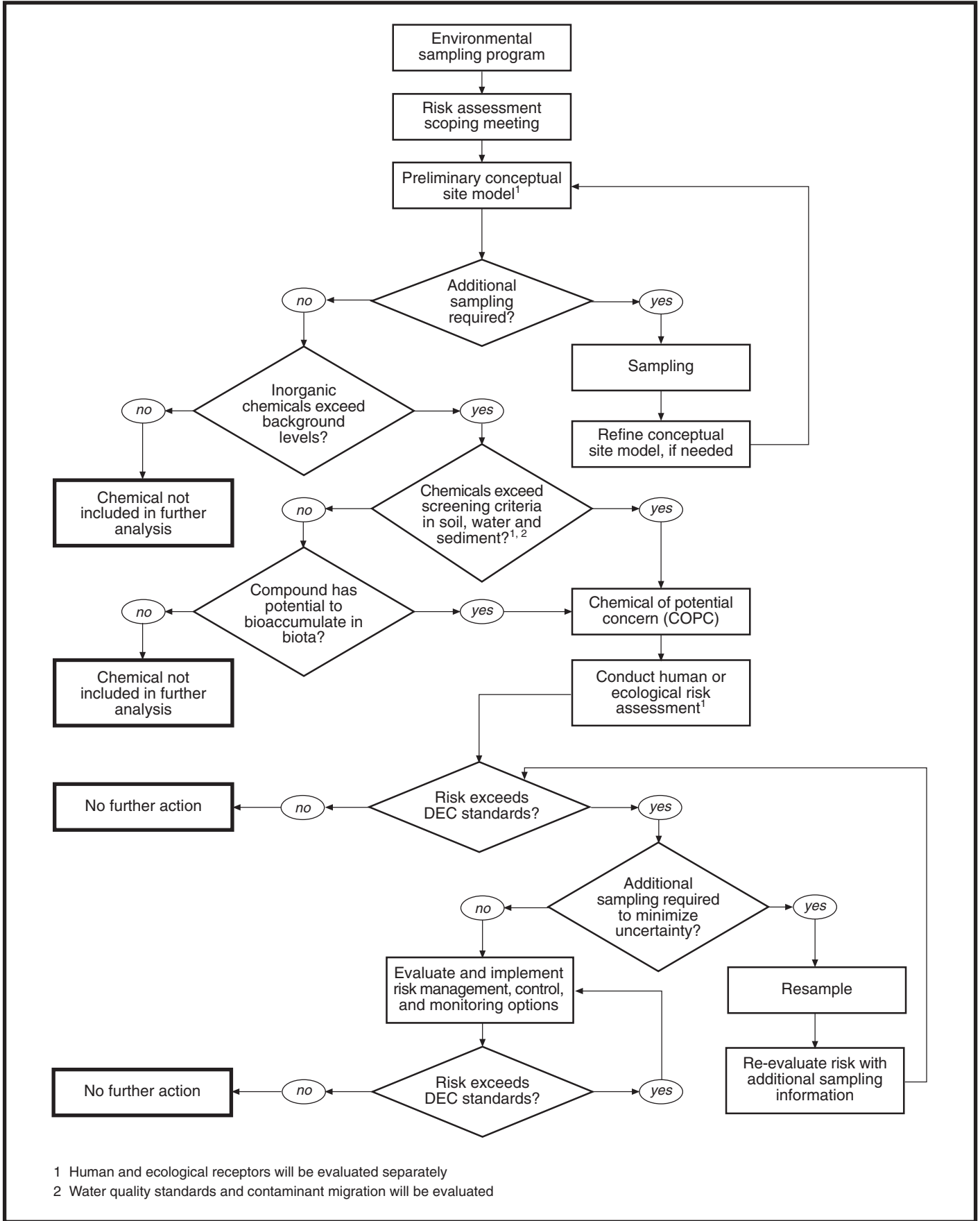


Figure 3-1. Decision making framework for evaluating risk to human health and ecological receptors