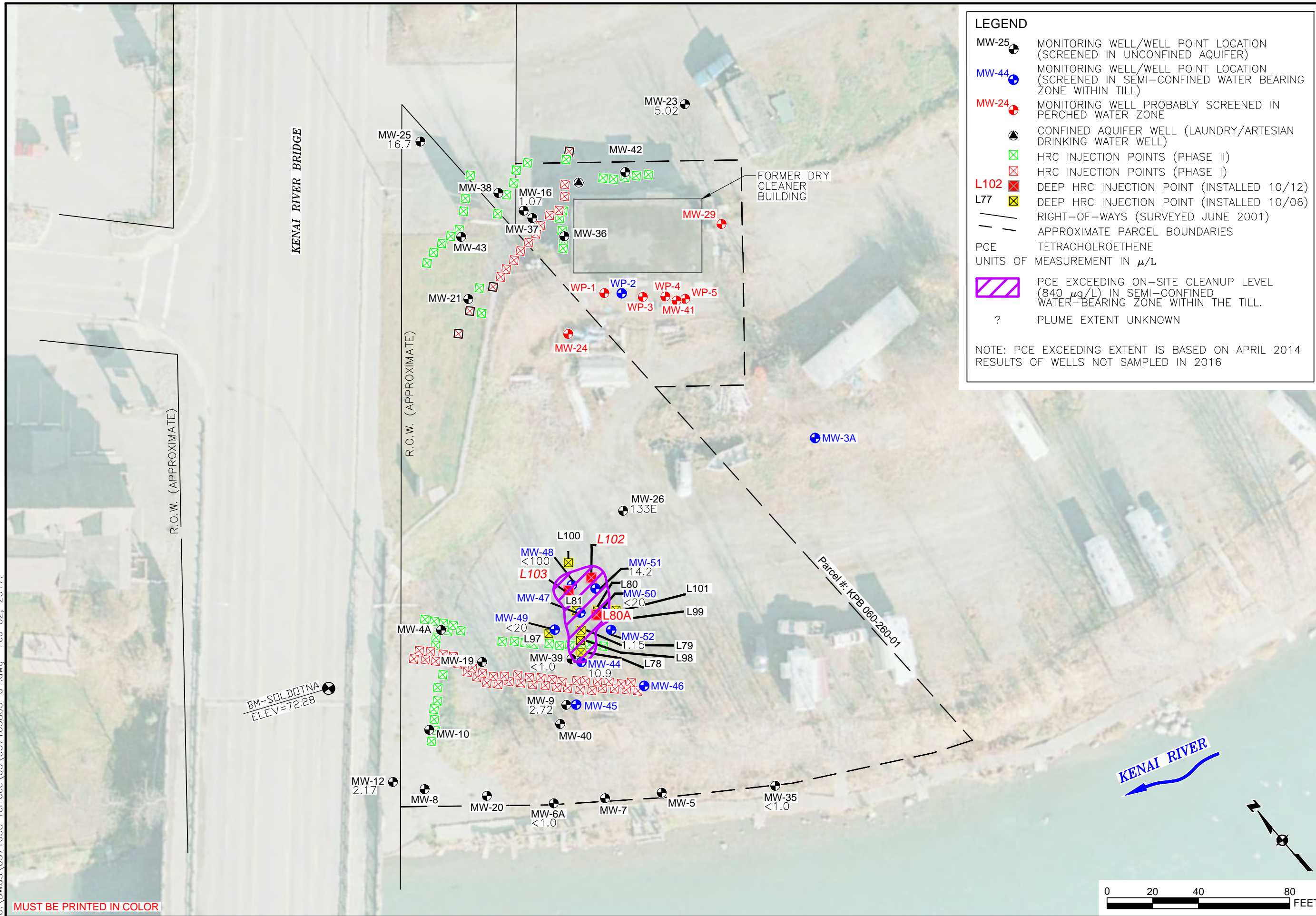


G:\DWGS\0371058 Terrace\03\037105803-01.dwg Feb. 02, 2017.

MUST BE PRINTED IN COLOR



LEGEND

- MW-25 ● MONITORING WELL/WELL POINT LOCATION (SCREENED IN UNCONFINED AQUIFER)
- MW-44 ● MONITORING WELL/WELL POINT LOCATION (SCREENED IN SEMI-CONFINED WATER BEARING ZONE WITHIN TILL)
- MW-24 ● MONITORING WELL PROBABLY SCREENED IN PERCHED WATER ZONE
- CONFINED AQUIFER WELL (LAUNDRY/ARTESIAN DRINKING WATER WELL)
- ☒ HRC INJECTION POINTS (PHASE II)
- ☒ HRC INJECTION POINTS (PHASE I)
- L102 ☒ DEEP HRC INJECTION POINT (INSTALLED 10/12)
- L77 ☒ DEEP HRC INJECTION POINT (INSTALLED 10/06)
- RIGHT-OF-WAYS (SURVEYED JUNE 2001)
- - - APPROXIMATE PARCEL BOUNDARIES
- PCE TETRACHLOROETHENE
- UNITS OF MEASUREMENT IN μ/L
- ▨ PCE EXCEEDING ON-SITE CLEANUP LEVEL (840 μg/L) IN SEMI-CONFINED WATER-BEARING ZONE WITHIN THE TILL.
- ? PLUME EXTENT UNKNOWN

NOTE: PCE EXCEEDING EXTENT IS BASED ON APRIL 2014 RESULTS OF WELLS NOT SAMPLED IN 2016

FIGURE

4

PCE EXTENT AND CONCENTRATION MAP

RIVER TERRACE RV PARK
Soldotna, Alaska

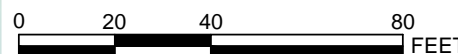
DATE: MAY 2015

CHKD: T.M.

DRAWN: JSE

PROJ. No.: 0213930

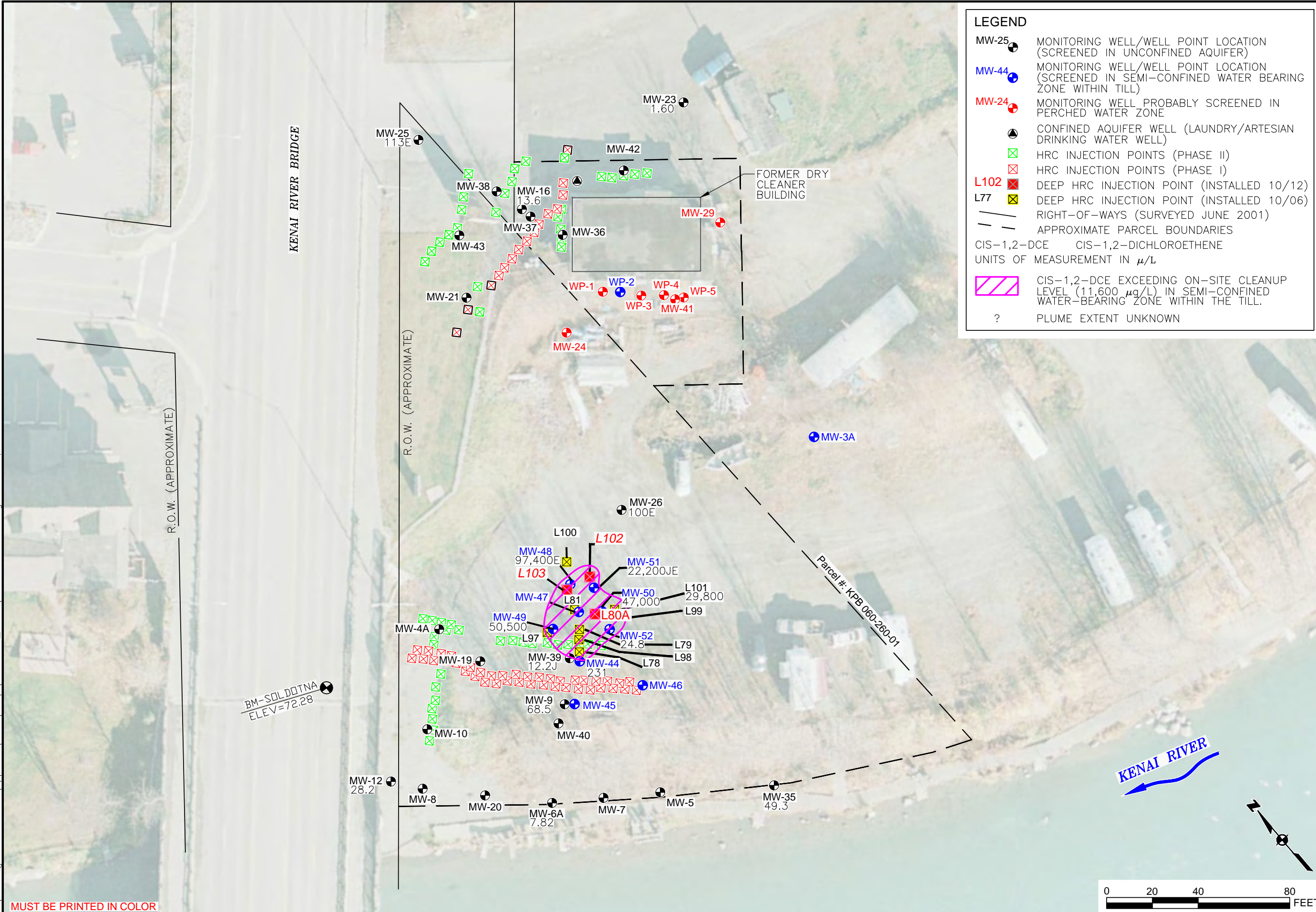
825 W. 8th Ave., Anchorage, AK 99501, (907) 258-4880



SOURCE: AERIAL PHOTOGRAPH SOLDOTNA9-30-06.TIF DATED 9/30/2006 PROVIDED BY AEROMAP INC.

C:\Users\iesoer.rchmani\appdata\local\temp\AcPublish_3004\037105803-02.dwg Feb 02, 2017.

MUST BE PRINTED IN COLOR



LEGEND

- MW-25 ● MONITORING WELL/WELL POINT LOCATION (SCREENED IN UNCONFINED AQUIFER)
- MW-44 ● MONITORING WELL/WELL POINT LOCATION (SCREENED IN SEMI-CONFINED WATER BEARING ZONE WITHIN TILL)
- MW-24 ● MONITORING WELL PROBABLY SCREENED IN PERCHED WATER ZONE
- CONFINED AQUIFER WELL (LAUNDRY/ARTESIAN DRINKING WATER WELL)
- ⊠ HRC INJECTION POINTS (PHASE II)
- ⊠ HRC INJECTION POINTS (PHASE I)
- L102 ⊠ DEEP HRC INJECTION POINT (INSTALLED 10/12)
- L77 ⊠ DEEP HRC INJECTION POINT (INSTALLED 10/06)
- RIGHT-OF-WAYS (SURVEYED JUNE 2001)
- - - APPROXIMATE PARCEL BOUNDARIES
- CIS-1,2-DCE CIS-1,2-DICHLOROETHENE
- UNITS OF MEASUREMENT IN μ/L
- ⊠ CIS-1,2-DCE EXCEEDING ON-SITE CLEANUP LEVEL (11,600 $\mu g/L$) IN SEMI-CONFINED WATER-BEARING ZONE WITHIN THE TILL.
- ? PLUME EXTENT UNKNOWN

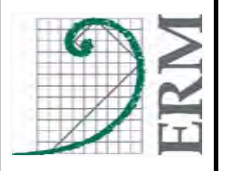
FIGURE

5

CIS-1,2-DCE EXTENT AND CONCENTRATION MAP

RIVER TERRACE RV PARK
Soldotna, Alaska

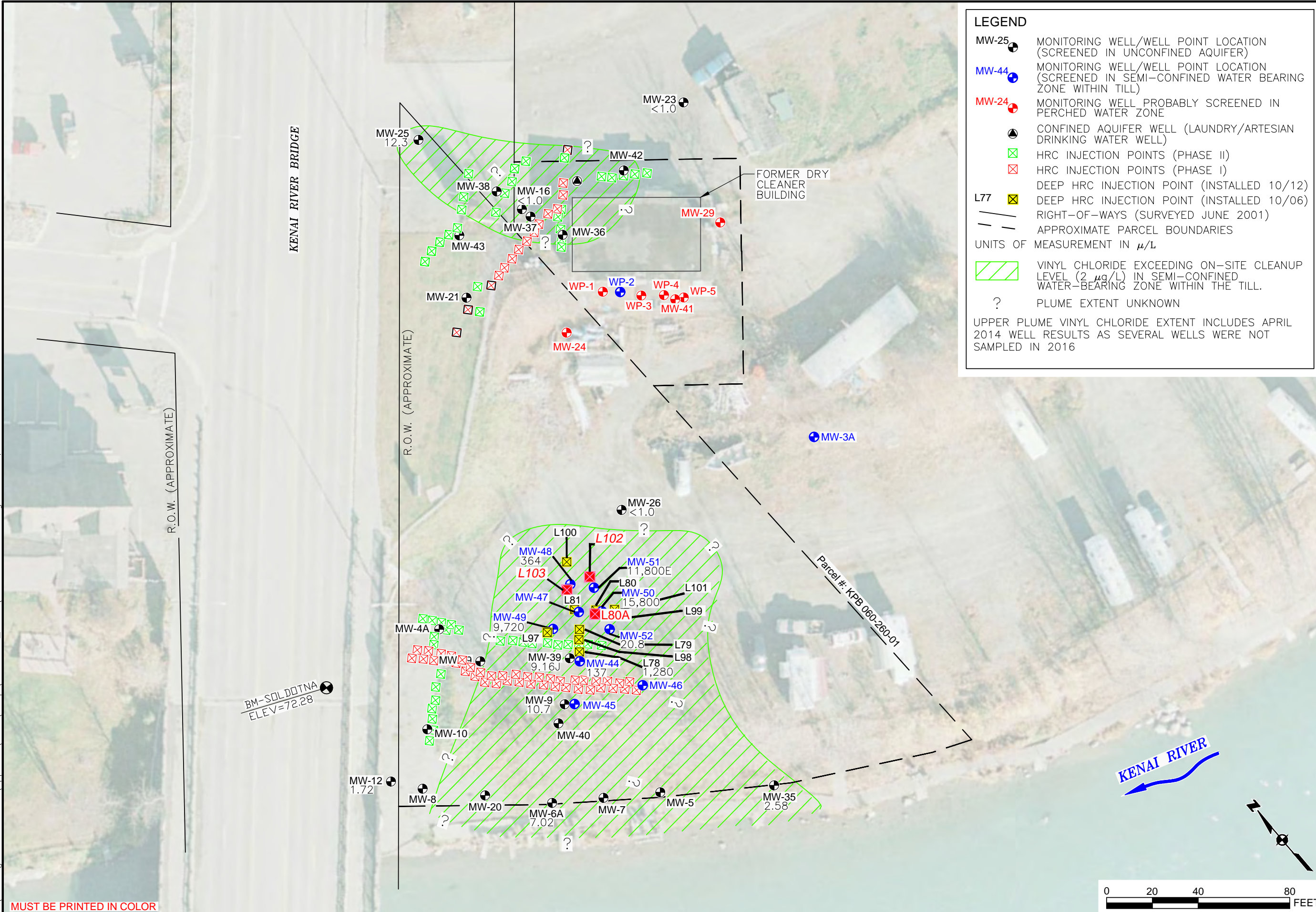
DATE: MAY 2015
 CHKD: T.M.
 DRAWN: JSE
 PROJ. No.: 0213930
 825 W. 8th Ave., Anchorage, AK 99501, (907) 258-4880



SOURCE: AERIAL PHOTOGRAPH SOLDOTNA9-30-06.TIF DATED 9/30/2006 PROVIDED BY AEROMAP INC.

C:\Users\iesoer.rchmani\appdata\local\temp\AcPublish_3004\037105803-03.dwg Feb 02, 2017.

MUST BE PRINTED IN COLOR



LEGEND

- MW-25 ● MONITORING WELL/WELL POINT LOCATION (SCREENED IN UNCONFINED AQUIFER)
- MW-44 ● MONITORING WELL/WELL POINT LOCATION (SCREENED IN SEMI-CONFINED WATER BEARING ZONE WITHIN TILL)
- MW-24 ● MONITORING WELL PROBABLY SCREENED IN PERCHED WATER ZONE
- CONFINED AQUIFER WELL (LAUNDRY/ARTESIAN DRINKING WATER WELL)
- ⊠ HRC INJECTION POINTS (PHASE II)
- ⊠ HRC INJECTION POINTS (PHASE I)
- ⊠ L77 DEEP HRC INJECTION POINT (INSTALLED 10/12)
- ⊠ DEEP HRC INJECTION POINT (INSTALLED 10/06)
- RIGHT-OF-WAYS (SURVEYED JUNE 2001)
- - - APPROXIMATE PARCEL BOUNDARIES

UNITS OF MEASUREMENT IN μ/L

- ⊠ VINYL CHLORIDE EXCEEDING ON-SITE CLEANUP LEVEL ($2 \mu g/L$) IN SEMI-CONFINED WATER-BEARING ZONE WITHIN THE TILL.
- ? PLUME EXTENT UNKNOWN

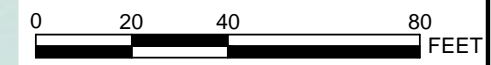
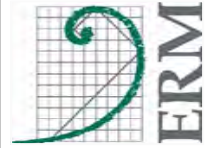
UPPER PLUME VINYL CHLORIDE EXTENT INCLUDES APRIL 2014 WELL RESULTS AS SEVERAL WELLS WERE NOT SAMPLED IN 2016

FIGURE
6

VINYL CHLORIDE EXTENT AND CONCENTRATION MAP

RIVER TERRACE RV PARK
Soldotna, Alaska

DATE: MAY 2015
 CHKD: T.M.
 DRAWN: JSE
 PROJ. No.: 0213930
 825 W. 8th Ave., Anchorage,
 AK 99501, (907) 258-4880



SOURCE: AERIAL PHOTOGRAPH SOLDOTNA9-30-06.TIF DATED 9/30/2006 PROVIDED BY AEROMAP INC.