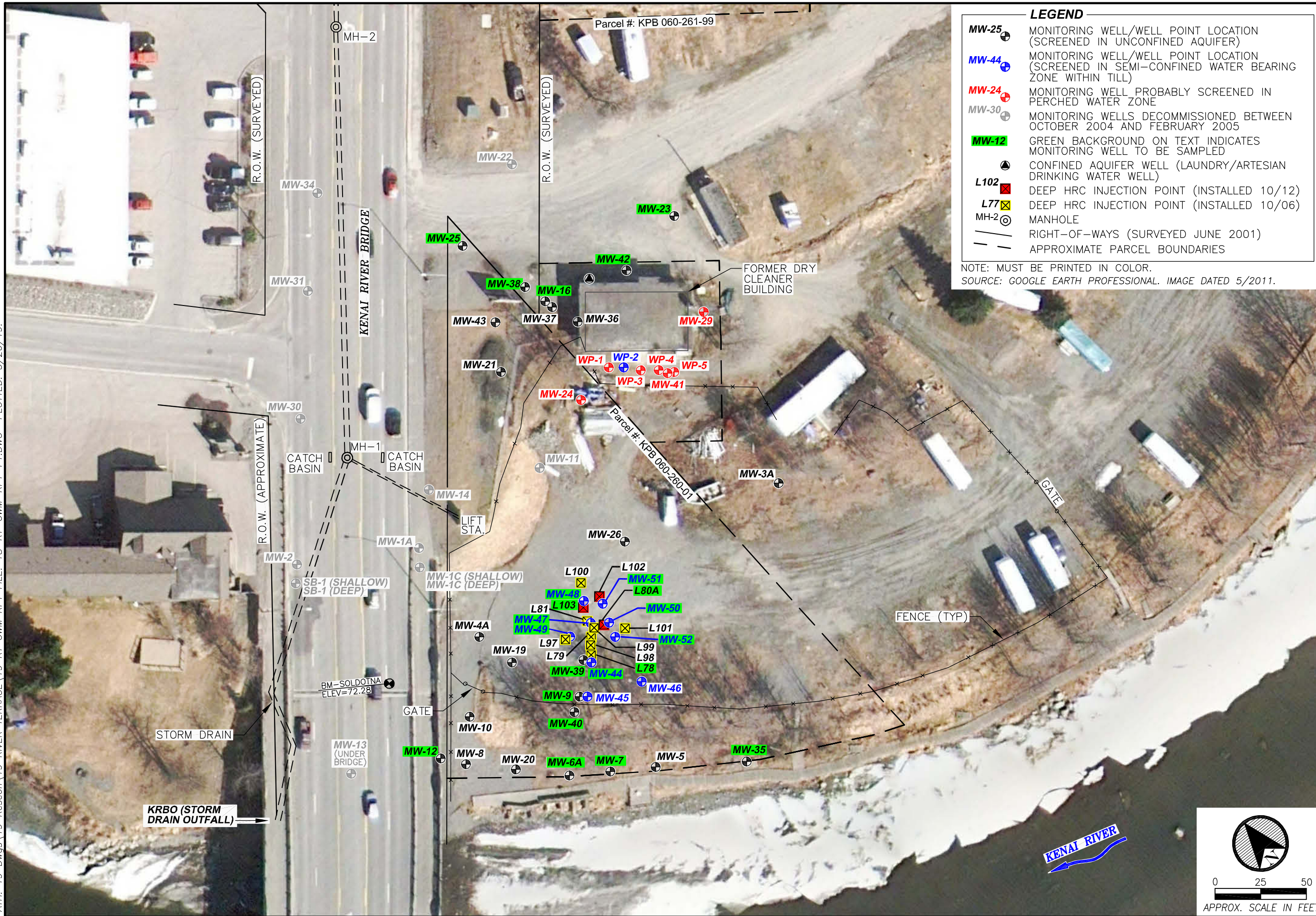


PATH: 19 Dws\19 Rescon\19 RIVER TERRACE\19 RT GWM RPT FILE: 18-RT-GWM-RPT-F1.DWG PLOTTED: 5/20/19.



**LEGEND**

- MW-25 MONITORING WELL/WELL POINT LOCATION (SCREENED IN UNCONFINED AQUIFER)
- ⊕ MW-44 MONITORING WELL/WELL POINT LOCATION (SCREENED IN SEMI-CONFINED WATER BEARING ZONE WITHIN TILL)
- ⊕ MW-24 MONITORING WELL PROBABLY SCREENED IN PERCHED WATER ZONE
- ⊕ MW-30 MONITORING WELLS DECOMMISSIONED BETWEEN OCTOBER 2004 AND FEBRUARY 2005
- MW-12 GREEN BACKGROUND ON TEXT INDICATES MONITORING WELL TO BE SAMPLED
- ⊕ CONFINED AQUIFER WELL (LAUNDRY/ARTESIAN DRINKING WATER WELL)
- ⊠ L102 DEEP HRC INJECTION POINT (INSTALLED 10/12)
- ⊠ L77 DEEP HRC INJECTION POINT (INSTALLED 10/06)
- ⊙ MH-2 MANHOLE
- RIGHT-OF-WAYS (SURVEYED JUNE 2001)
- - - APPROXIMATE PARCEL BOUNDARIES

NOTE: MUST BE PRINTED IN COLOR.  
SOURCE: GOOGLE EARTH PROFESSIONAL. IMAGE DATED 5/2011.

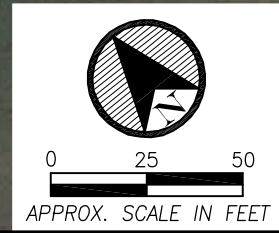
**FIGURE**  
**1**

**SITE PLAN**

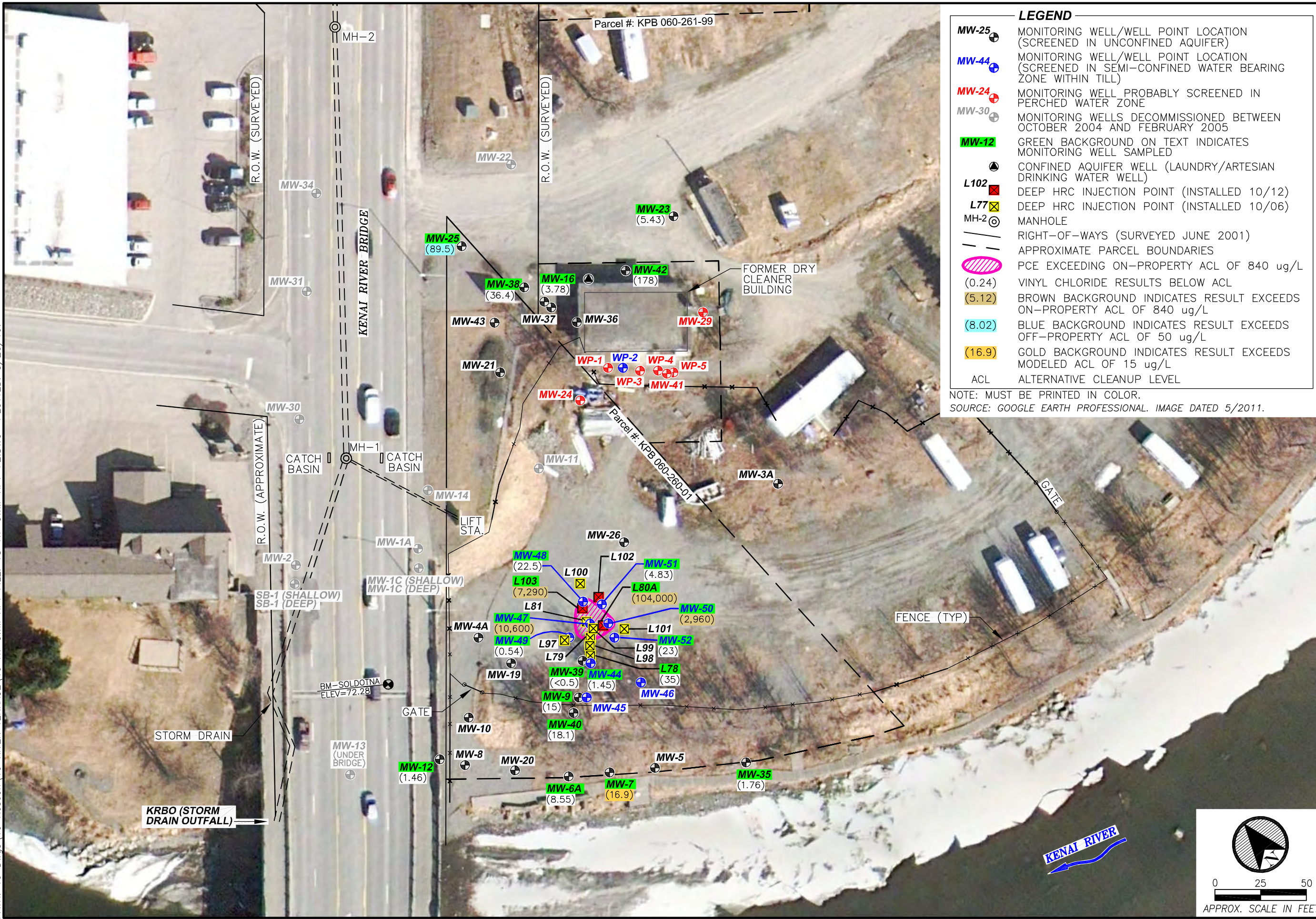
RIVER TERRACE RV PARK  
2018 DECEMBER GROUNDWATER MONITORING REPORT  
Soldotna, Alaska



DATE: MAY 2019  
CHKD: R.M.B.  
DRAWN: C.E.H.  
PROJECT  
No.: 20301.005.01



PATH: 19 Dws\19 Rescon\19 RIVER TERRACE\19 RT GWM RPT FILE: 18-RT-GWM-RPT-F2.DWG PLOTTED: 5/20/19.



**LEGEND**

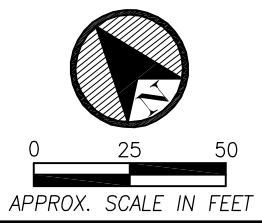
- MW-25 MONITORING WELL/WELL POINT LOCATION (SCREENED IN UNCONFINED AQUIFER)
- ⊕ MW-44 MONITORING WELL/WELL POINT LOCATION (SCREENED IN SEMI-CONFINED WATER BEARING ZONE WITHIN TILL)
- ⊕ MW-24 MONITORING WELL PROBABLY SCREENED IN PERCHED WATER ZONE
- ⊕ MW-30 MONITORING WELLS DECOMMISSIONED BETWEEN OCTOBER 2004 AND FEBRUARY 2005
- MW-12 GREEN BACKGROUND ON TEXT INDICATES MONITORING WELL SAMPLED
- CONFINED AQUIFER WELL (LAUNDRY/ARTESIAN DRINKING WATER WELL)
- L102 DEEP HRC INJECTION POINT (INSTALLED 10/12)
- L77 DEEP HRC INJECTION POINT (INSTALLED 10/06)
- MH-2 MANHOLE
- RIGHT-OF-WAYS (SURVEYED JUNE 2001)
- APPROXIMATE PARCEL BOUNDARIES
- PCE EXCEEDING ON-PROPERTY ACL OF 840 ug/L
- (0.24) VINYL CHLORIDE RESULTS BELOW ACL
- (5.12) BROWN BACKGROUND INDICATES RESULT EXCEEDS ON-PROPERTY ACL OF 840 ug/L
- (8.02) BLUE BACKGROUND INDICATES RESULT EXCEEDS OFF-PROPERTY ACL OF 50 ug/L
- (16.9) GOLD BACKGROUND INDICATES RESULT EXCEEDS MODELED ACL OF 15 ug/L
- ACL ALTERNATIVE CLEANUP LEVEL

NOTE: MUST BE PRINTED IN COLOR.  
SOURCE: GOOGLE EARTH PROFESSIONAL. IMAGE DATED 5/2011.

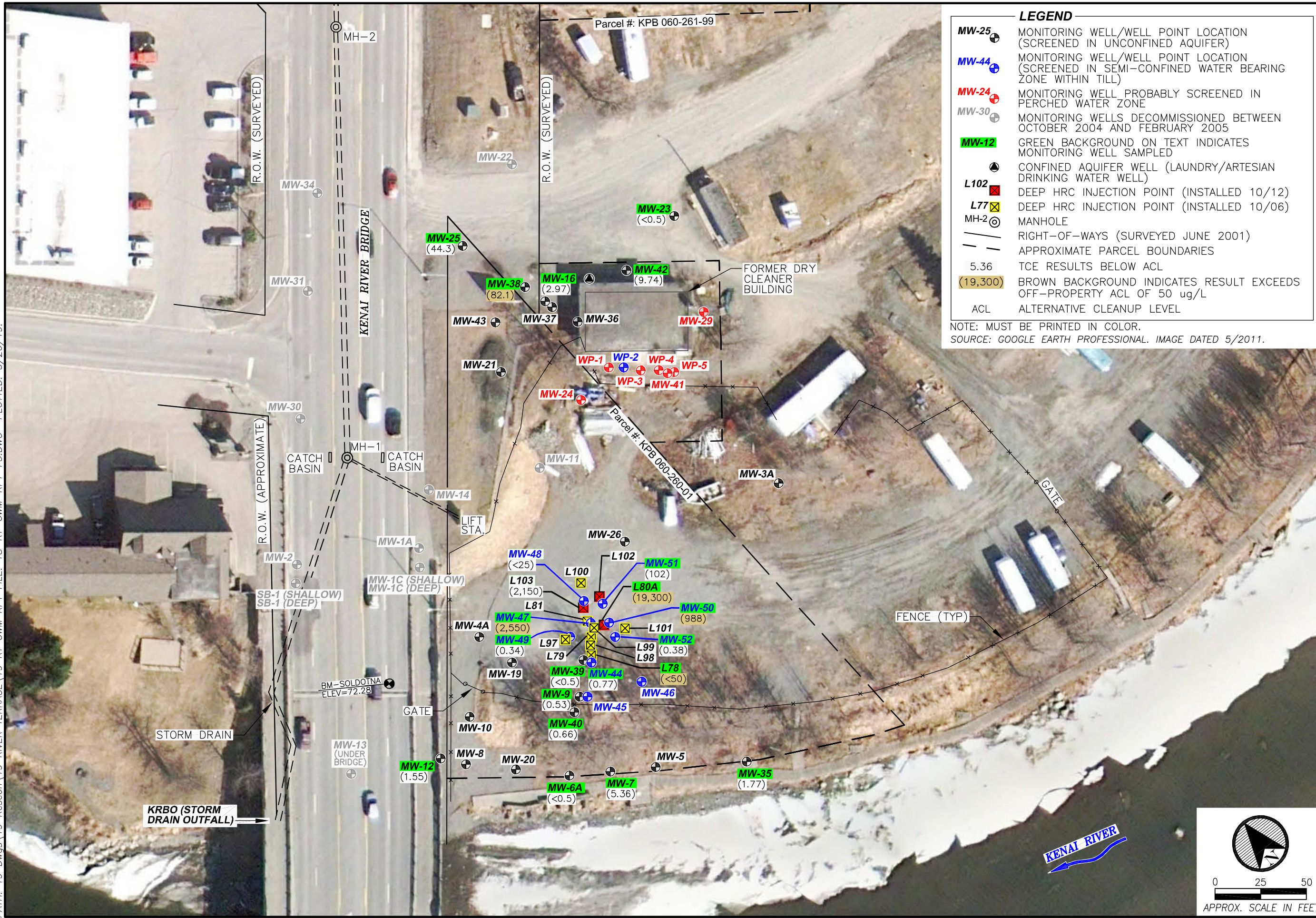
**PCE EXTENT AND CONCENTRATION MAP**  
RIVER TERRACE RV PARK  
2018 DECEMBER GROUNDWATER MONITORING REPORT  
Soldotna, Alaska



DATE: MAY 2019  
CHKD: R.M.B.  
DRAWN: C.E.H.  
PROJECT  
No.: 20301.005.01



PATH: 19 Dws\19 Rescon\19 RIVER TERRACE\19 RT GWM RPT FILE: 18-RT-GWM-RPT-F3.DWG PLOTTED: 5/20/19.



**LEGEND**

- MW-25** (circle with cross) MONITORING WELL/WELL POINT LOCATION (SCREENED IN UNCONFINED AQUIFER)
- MW-44** (circle with cross and blue outline) MONITORING WELL/WELL POINT LOCATION (SCREENED IN SEMI-CONFINED WATER BEARING ZONE WITHIN TILL)
- MW-24** (circle with cross and red outline) MONITORING WELL PROBABLY SCREENED IN PERCHED WATER ZONE
- MW-30** (circle with cross and grey outline) MONITORING WELLS DECOMMISSIONED BETWEEN OCTOBER 2004 AND FEBRUARY 2005
- MW-12** (circle with cross and green background) GREEN BACKGROUND ON TEXT INDICATES MONITORING WELL SAMPLED
- (circle with cross) CONFINED AQUIFER WELL (LAUNDRY/ARTESIAN DRINKING WATER WELL)
- L102** (square with cross and red background) DEEP HRC INJECTION POINT (INSTALLED 10/12)
- L77** (square with cross and yellow background) DEEP HRC INJECTION POINT (INSTALLED 10/06)
- MH-2** (circle with cross) MANHOLE
- (dashed line) RIGHT-OF-WAYS (SURVEYED JUNE 2001)
- (dotted line) APPROXIMATE PARCEL BOUNDARIES
- 5.36 TCE RESULTS BELOW ACL
- (19,300) BROWN BACKGROUND INDICATES RESULT EXCEEDS OFF-PROPERTY ACL OF 50 ug/L
- ACL ALTERNATIVE CLEANUP LEVEL

NOTE: MUST BE PRINTED IN COLOR.  
SOURCE: GOOGLE EARTH PROFESSIONAL. IMAGE DATED 5/2011.

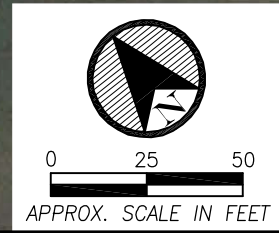
**FIGURE 3**

**TCE EXTENT AND CONCENTRATION MAP**

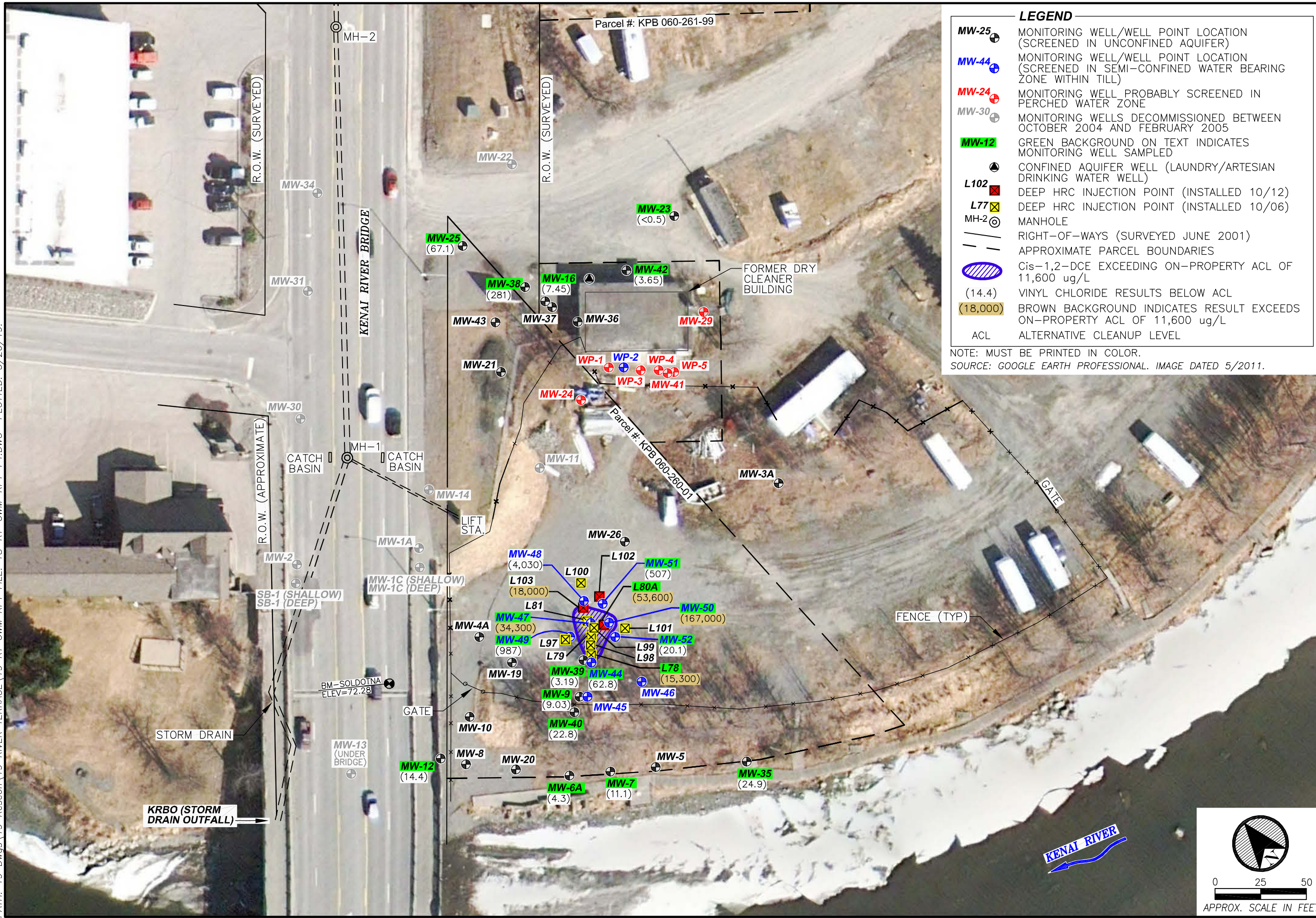
RIVER TERRACE RV PARK  
2018 DECEMBER GROUNDWATER MONITORING REPORT  
Soldotna, Alaska

**Ahtna**  
Engineering Services, LLC

DATE: MAY 2019  
CHKD: R.M.B.  
DRAWN: C.E.H.  
PROJECT  
No.: 20301.005.01



PATH: 19 Dws\19 Rescon\19 RIVER TERRACE\19 RT GWM RPT FILE: 18-RT-GWM-RPT-F4.DWG PLOTTED: 5/20/19.



**LEGEND**

- MW-25 MONITORING WELL/WELL POINT LOCATION (SCREENED IN UNCONFINED AQUIFER)
- MW-44 MONITORING WELL/WELL POINT LOCATION (SCREENED IN SEMI-CONFINED WATER BEARING ZONE WITHIN TILL)
- MW-24 MONITORING WELL PROBABLY SCREENED IN PERCHED WATER ZONE
- MW-30 MONITORING WELLS DECOMMISSIONED BETWEEN OCTOBER 2004 AND FEBRUARY 2005
- MW-12 GREEN BACKGROUND ON TEXT INDICATES MONITORING WELL SAMPLED
- CONFINED AQUIFER WELL (LAUNDRY/ARTESIAN DRINKING WATER WELL)
- L102 DEEP HRC INJECTION POINT (INSTALLED 10/12)
- L77 DEEP HRC INJECTION POINT (INSTALLED 10/06)
- MH-2 MANHOLE
- RIGHT-OF-WAYS (SURVEYED JUNE 2001)
- APPROXIMATE PARCEL BOUNDARIES
- Cis-1,2-DCE EXCEEDING ON-PROPERTY ACL OF 11,600 ug/L (14.4)
- VINYL CHLORIDE RESULTS BELOW ACL (18,000)
- BROWN BACKGROUND INDICATES RESULT EXCEEDS ON-PROPERTY ACL OF 11,600 ug/L
- ACL ALTERNATIVE CLEANUP LEVEL

NOTE: MUST BE PRINTED IN COLOR.  
SOURCE: GOOGLE EARTH PROFESSIONAL. IMAGE DATED 5/2011.

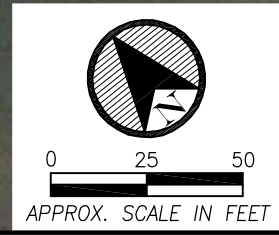
**FIGURE 4**

**Cis-1,2-DCE EXTENT AND CONCENTRATION MAP**

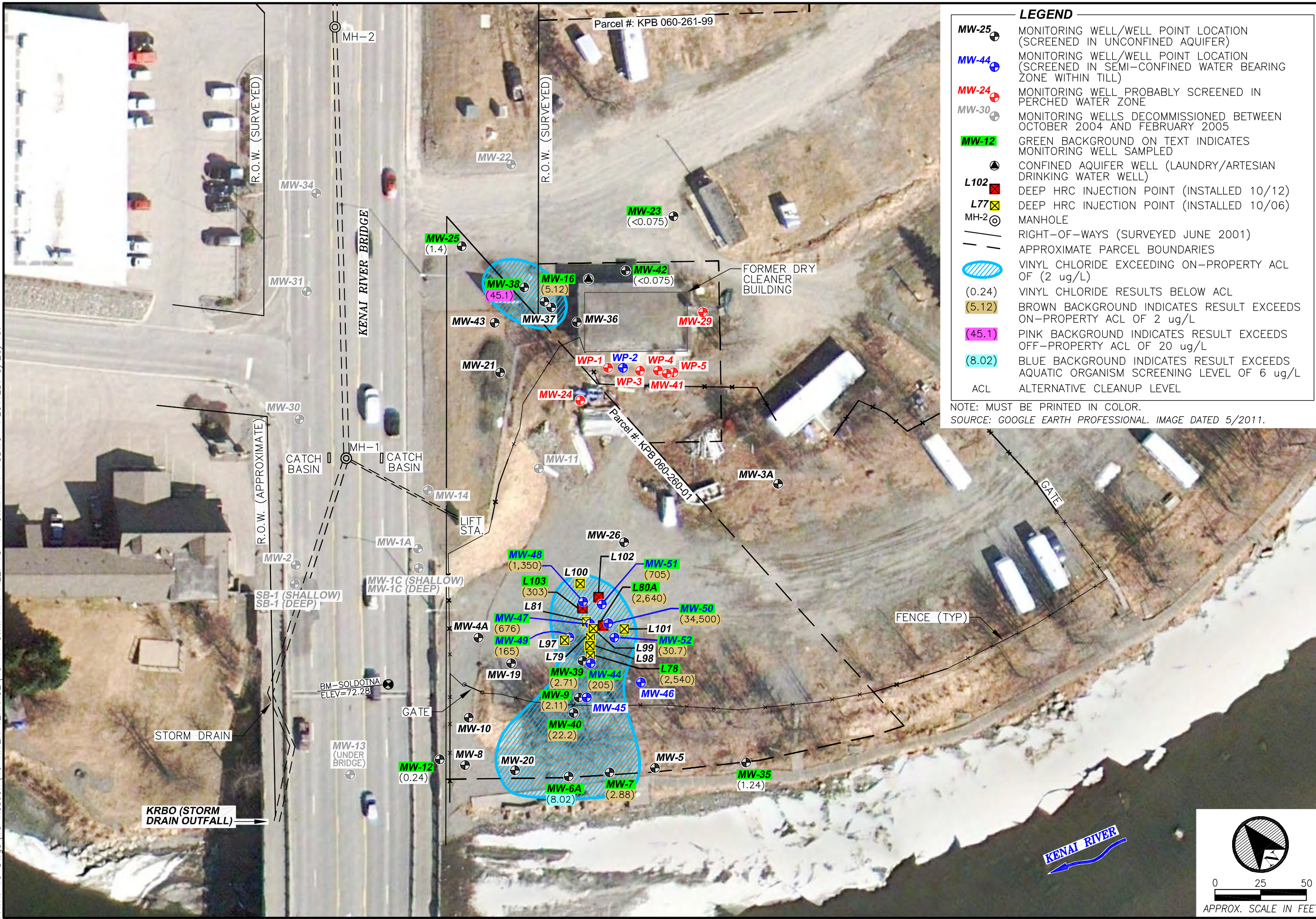
RIVER TERRACE RV PARK  
2018 DECEMBER GROUNDWATER MONITORING REPORT  
Soldotna, Alaska

**Ahtna**  
Engineering Services, LLC

DATE: MAY 2019  
CHKD: R.M.B.  
DRAWN: C.E.H.  
PROJECT  
No.: 20301.005.01



PATH: 19 Dws\19 Rescon\19 RIVER TERRACE\19 RT GWM RPT FILE: 18-RT-GWM-RPT-F5DWG PLOTTED: 5/20/19.



**LEGEND**

- MW-25 MONITORING WELL/WELL POINT LOCATION (SCREENED IN UNCONFINED AQUIFER)
- MW-44 MONITORING WELL/WELL POINT LOCATION (SCREENED IN SEMI-CONFINED WATER BEARING ZONE WITHIN TILL)
- MW-24 MONITORING WELL PROBABLY SCREENED IN PERCHED WATER ZONE
- MW-30 MONITORING WELLS DECOMMISSIONED BETWEEN OCTOBER 2004 AND FEBRUARY 2005
- MW-12 GREEN BACKGROUND ON TEXT INDICATES MONITORING WELL SAMPLED
- CONFINED AQUIFER WELL (LAUNDRY/ARTESIAN DRINKING WATER WELL)
- L102 DEEP HRC INJECTION POINT (INSTALLED 10/12)
- L77 DEEP HRC INJECTION POINT (INSTALLED 10/06)
- ⊙ MH-2 MANHOLE
- RIGHT-OF-WAYS (SURVEYED JUNE 2001)
- APPROXIMATE PARCEL BOUNDARIES
- VINYL CHLORIDE EXCEEDING ON-PROPERTY ACL OF (2 ug/L)
- (0.24) VINYL CHLORIDE RESULTS BELOW ACL
- (5.12) BROWN BACKGROUND INDICATES RESULT EXCEEDS ON-PROPERTY ACL OF 2 ug/L
- (45.1) PINK BACKGROUND INDICATES RESULT EXCEEDS OFF-PROPERTY ACL OF 20 ug/L
- (8.02) BLUE BACKGROUND INDICATES RESULT EXCEEDS AQUATIC ORGANISM SCREENING LEVEL OF 6 ug/L
- ACL ALTERNATIVE CLEANUP LEVEL

NOTE: MUST BE PRINTED IN COLOR.  
SOURCE: GOOGLE EARTH PROFESSIONAL. IMAGE DATED 5/2011.

FIGURE  
5

**VINYL CHLORIDE EXTENT AND CONCENTRATION MAP**  
RIVER TERRACE RV PARK  
2018 DECEMBER GROUNDWATER MONITORING REPORT  
Soldotna, Alaska



DATE: MAY 2019  
CHKD: R.M.B.  
DRAWN: C.E.H.  
PROJECT  
No.: 20301.005.01

