



DEC Brownfields Program

December 2020

Alaska Department of Environmental Conservation
Division of Spill Prevention and Response
Contaminated Sites Program

CASE STUDY: Former Trespass Shooting Range, Delta Junction

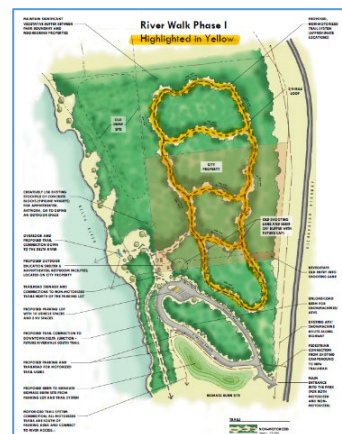
In 1982, the City of Delta Junction (CDJ) placed a soil berm across a former access road to block public use of an old dump. Since then, local residents began using the berm as an unauthorized shooting range. Spent bullets, bullet fragments, and shotgun shells were present in the berm and across the range floor. These materials contain heavy metals such as lead, arsenic, antimony, and copper, which can cause adverse health effects to both people and wildlife. Envisioning a network of area recreational trails, the Delta Junction Trails Association (DJTA) identified the former Trespass Shooting Range as one of many properties necessary for realizing that vision. However, the presence of the contaminated soil kept the project from moving forward.

The Alaska Department of Environmental Conservation (DEC) first conducted assessment activities at the site in 2009. In 2016, DJTA received a Targeted Brownfield Assessment (TBA) from the U.S. Environmental Protection Agency (EPA) to define the extent of the impacts at the shooting range and old dump sites. Based on that work, DJTA was awarded DEC Brownfield Assessment and Cleanup (DBAC) service funding to clean up the property. Beginning in October 2019, DEC excavated the contaminated soil from the range floor and the soil berm/backstop. The soil was treated with a chemical fixative to prevent the metals from leaching out of the soil.

In order to dispose of the soil at the Delta Junction landfill, DEC conducted fate-and-transport modeling, in coordination with the DEC Solid Waste Program and CDJ. DEC disposed of almost 800 cubic yards of treated soil at the landfill. Further, additional sampling of the ground surface at the site showed that all of the contamination was removed. The site is now available for its reuse as a recreational trail system.



Delta Junction Trespass Shooting Range (2009)



Design for Delta Junction Riverwalk Park

Highlights

- Formerly an unauthorized shooting range
- Contaminated with lead, arsenic, antimony, and copper
- Received an EPA Targeted Brownfields Assessment and DEC Brownfields Assessment and Cleanup services
- Over 800 cubic yards of contaminated soil cleaned up and disposed of properly
- Ready for reuse as a recreational trail system

See the [Contaminated Sites Database](#), File No. [120.38.017](#) for more information

“Reclaiming this once contaminated area so that we can create outdoor recreation for all users, here in Delta Junction, is a real game changer.”

- Delta Junction Trails Association