

The Project Area Zone of Deposit (ZOD) map can be accessed using the following link:

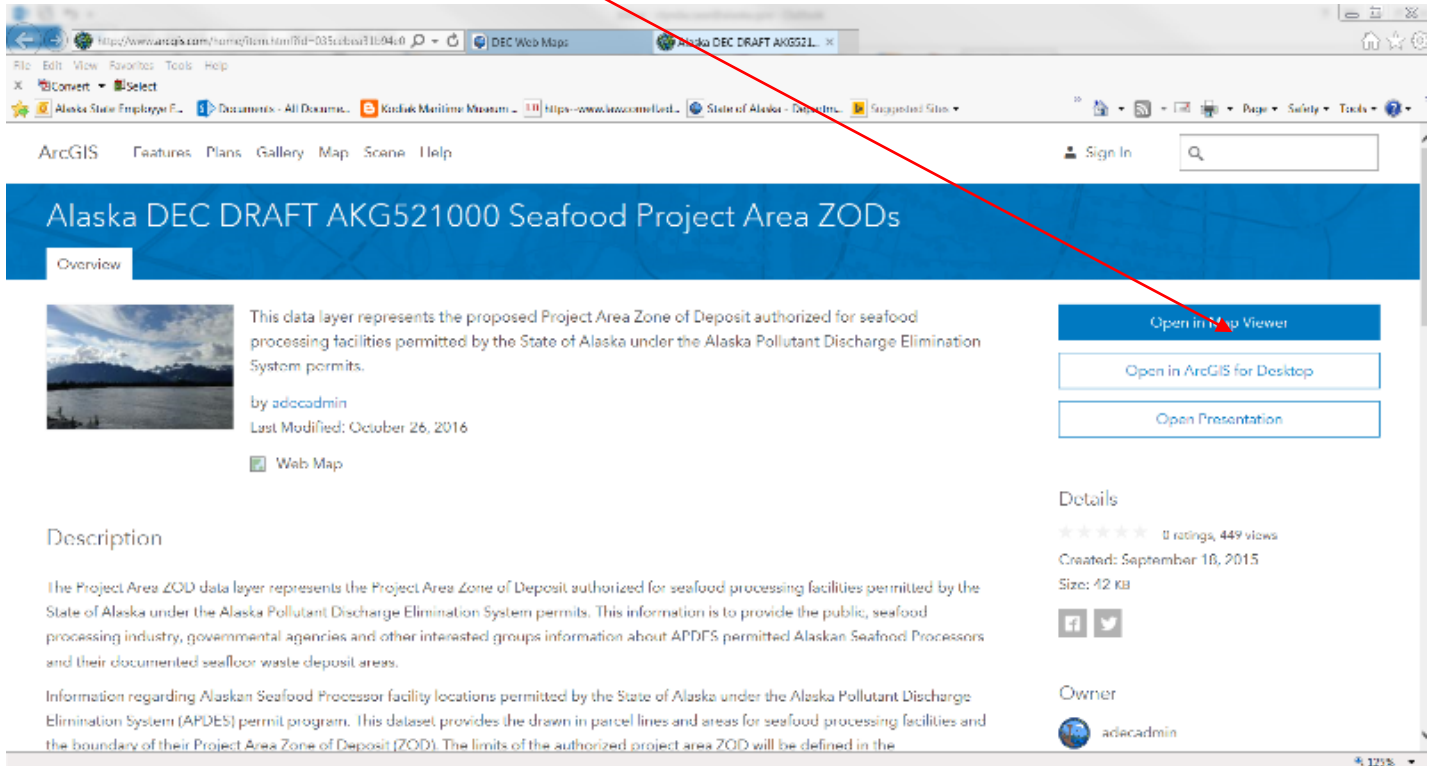
<http://dec.alaska.gov/das/gis/apps.htm>

But is also posted here:

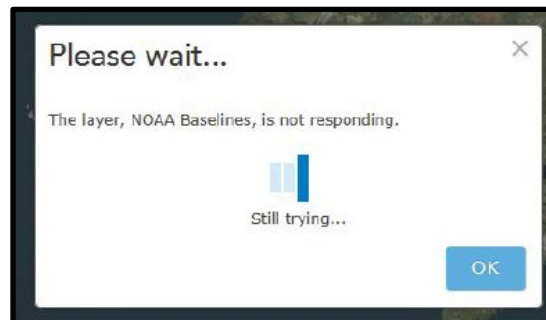
The Public Notice webpage: <http://dec.alaska.gov/water/wastewater/>

How to use the Map

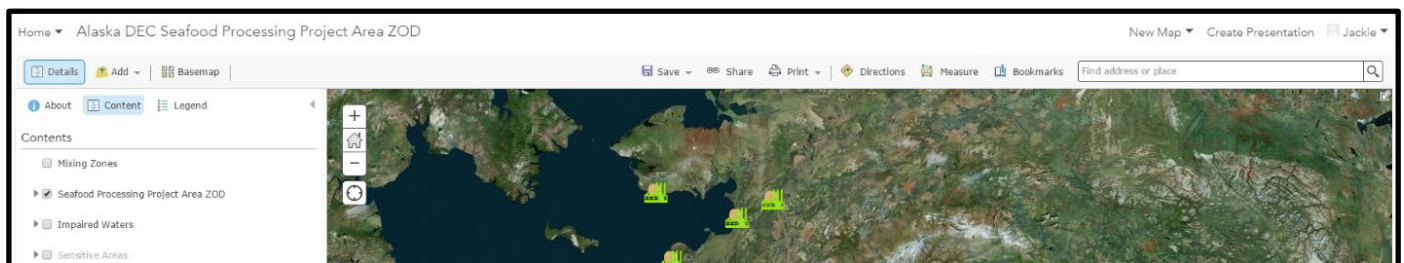
Select 'Open', then in 'Map Viewer'.



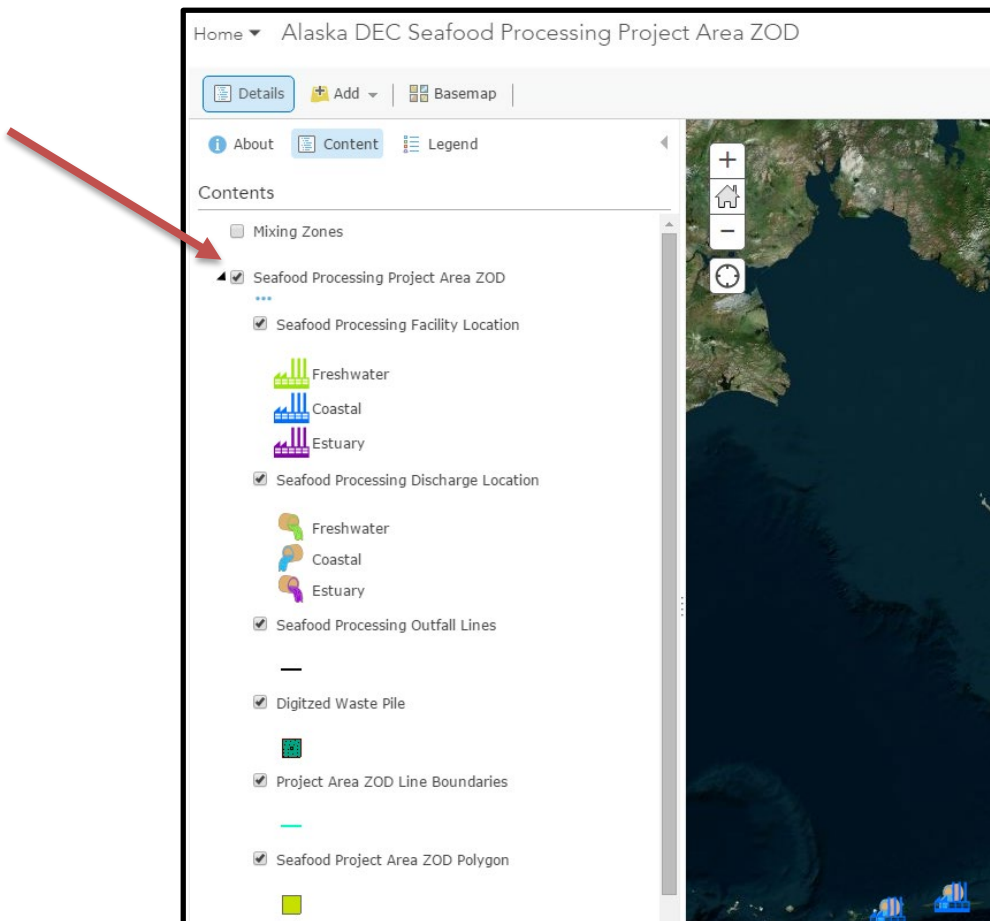
An error box may appear that indicates that one or more layers are not responding, or not loading. Click 'OK' to continue loading map.



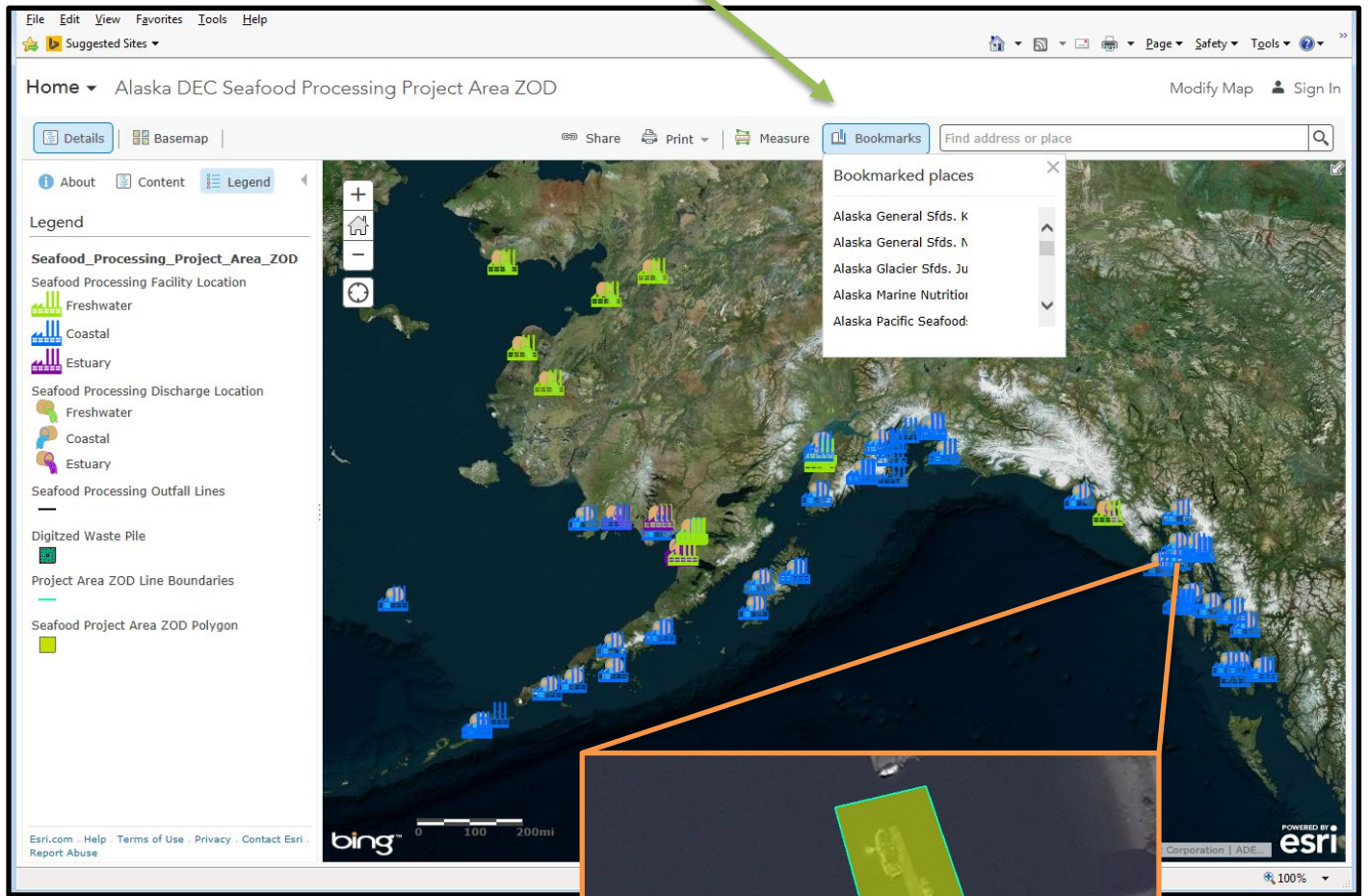
The Seafood Project Area ZOD map will open to look like this:



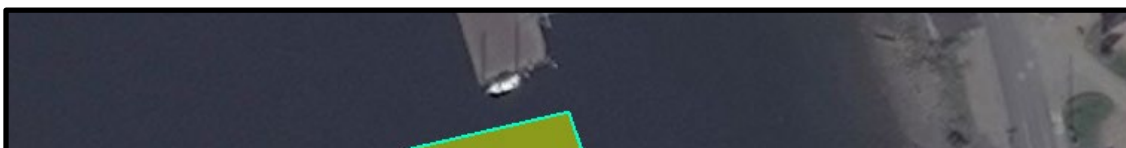
Under 'Content', select the 'Seafood Processing Project Area ZOD' dataset to expand the data tree. Click on each individual file to further expand and view the symbology.



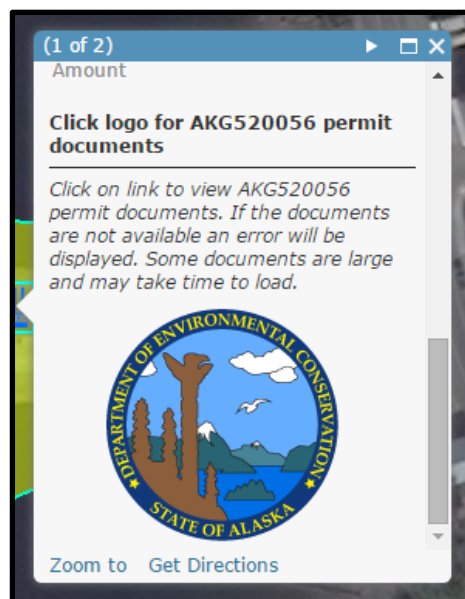
To look up your facility and review your assigned Project Area Zone of Deposit (ZOD), click on the 'Bookmarks' button and scroll down under to find your facility. When you select your facility, it should zoom you to your location.



Click on any of the symbology or shapes on the map to verify that you are on the correct facility. A pop-up with the feature attributes should come up when the feature is selected.

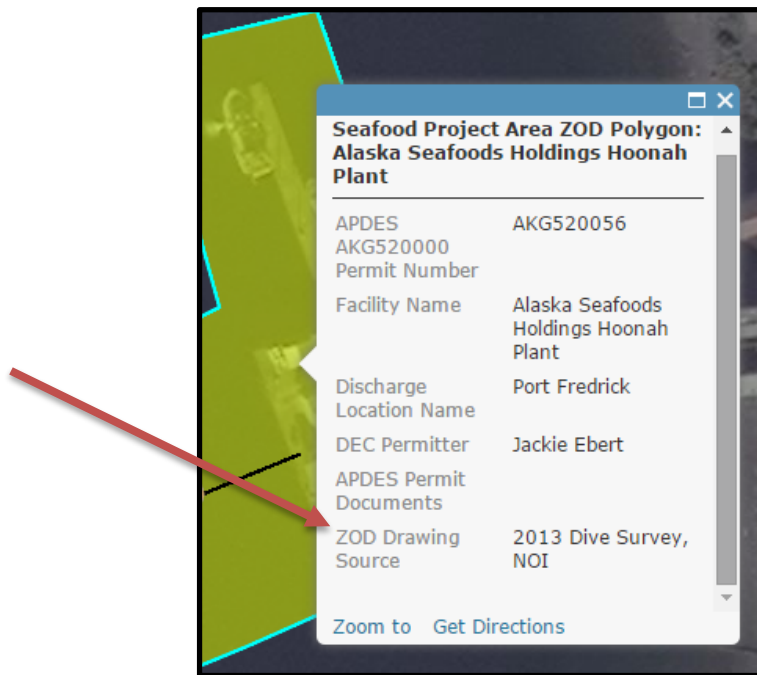


You can then scroll down in the pop-up box and find the permit information for that facility. Click on the state seal and it should link you to the State of Alaska’s online water permit search, where you can download specific permit documents, including each facility’s Notice of Intent and current authorization package.



How to Review your Project Area Zone of Deposit

Once you navigate to your facility and Project Area Zone of Deposit (ZOD), select the Project Area ZOD (there is a polygon and a line file) and view the information associated with your facility and Project Area ZOD assignment. The 'ZOD Drawing Source' lists what was used to delineate and draw the Project Area ZOD polygon and line file, and the outfall line location.



How should I submit comments specific to my facility's Project Area ZODs?

Written comments must be submitted by the end of the comment period of the AKG521000 permit and fact sheet. Please direct written comments and requests to the attention of the permit writer, Jackie Ebert, at the address or email shown on Page 1 of the fact sheet's Public Notice document.