



Marine Safety Task Force FY21

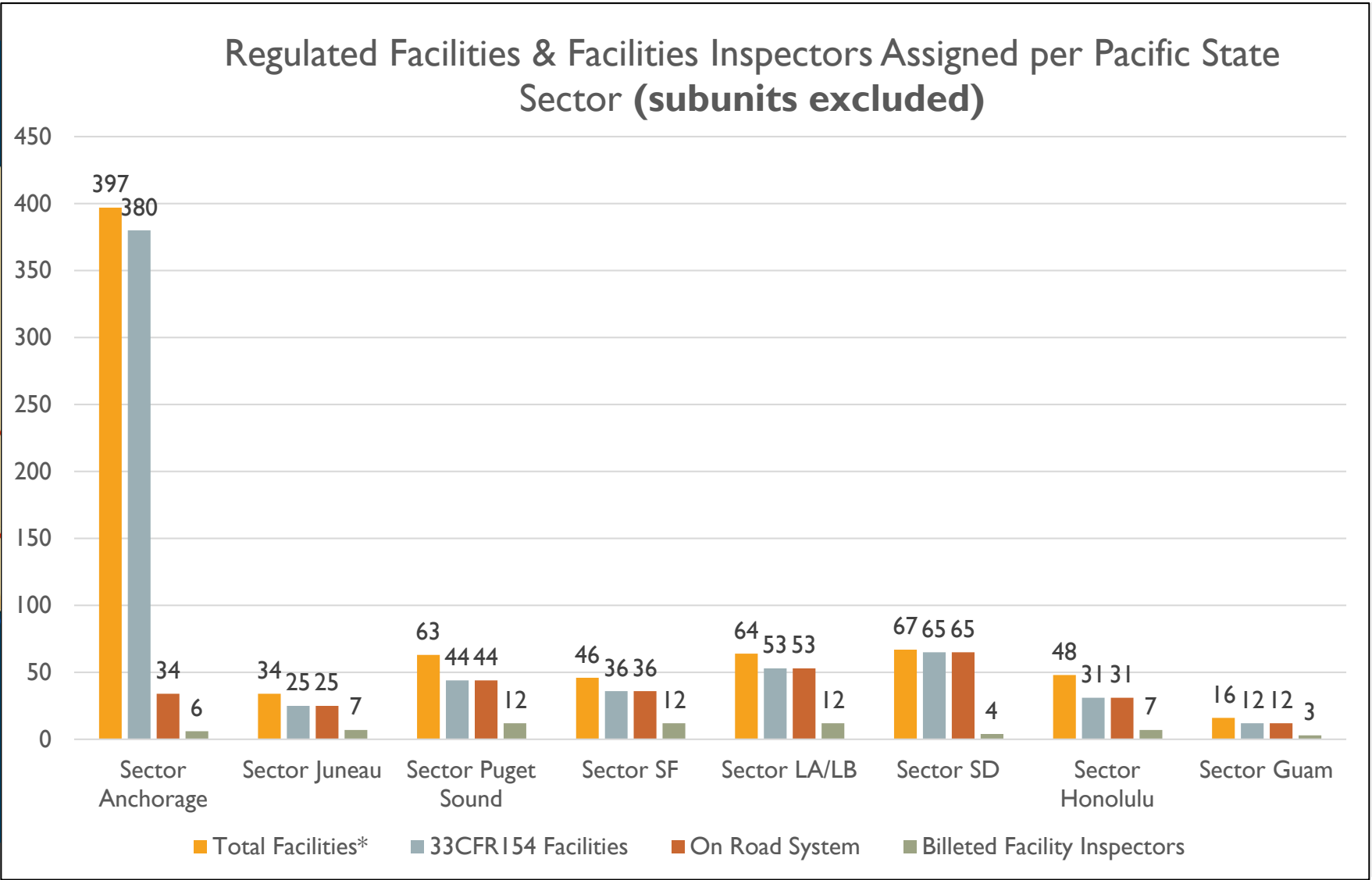
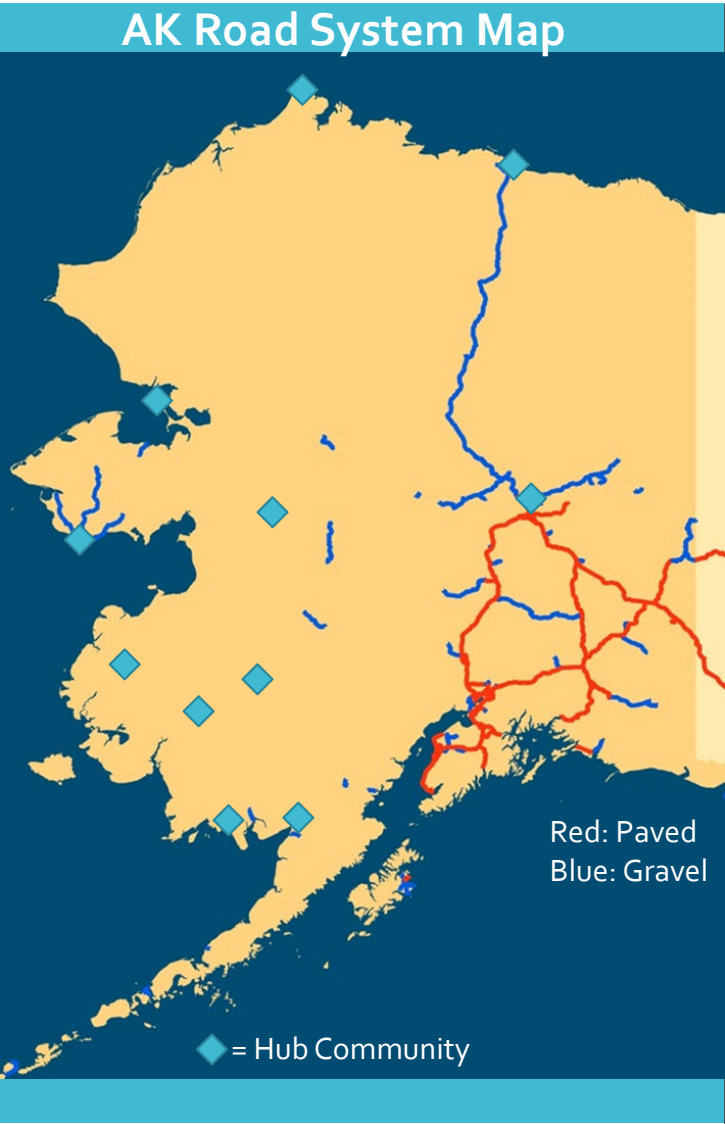
AWA Area Committee Briefing

The background image shows the deck of a ship at night. On the left, there are large, stacked fishing traps or cages with yellow and red markings. A metal railing runs along the edge of the deck. Several people, likely crew members, are standing on the deck, looking towards the right. The scene is dimly lit, with some artificial light visible in the distance.

Briefing Review

- Mission Execution Challenges
- Marine Safety Task Force: A Deployment Model
- Operational Data for LMR Enforcement and MSTF
- New for FY21

Sector Anchorage Mission Challenges



* Bar graph does not include 33CFR158 Reception Facilities

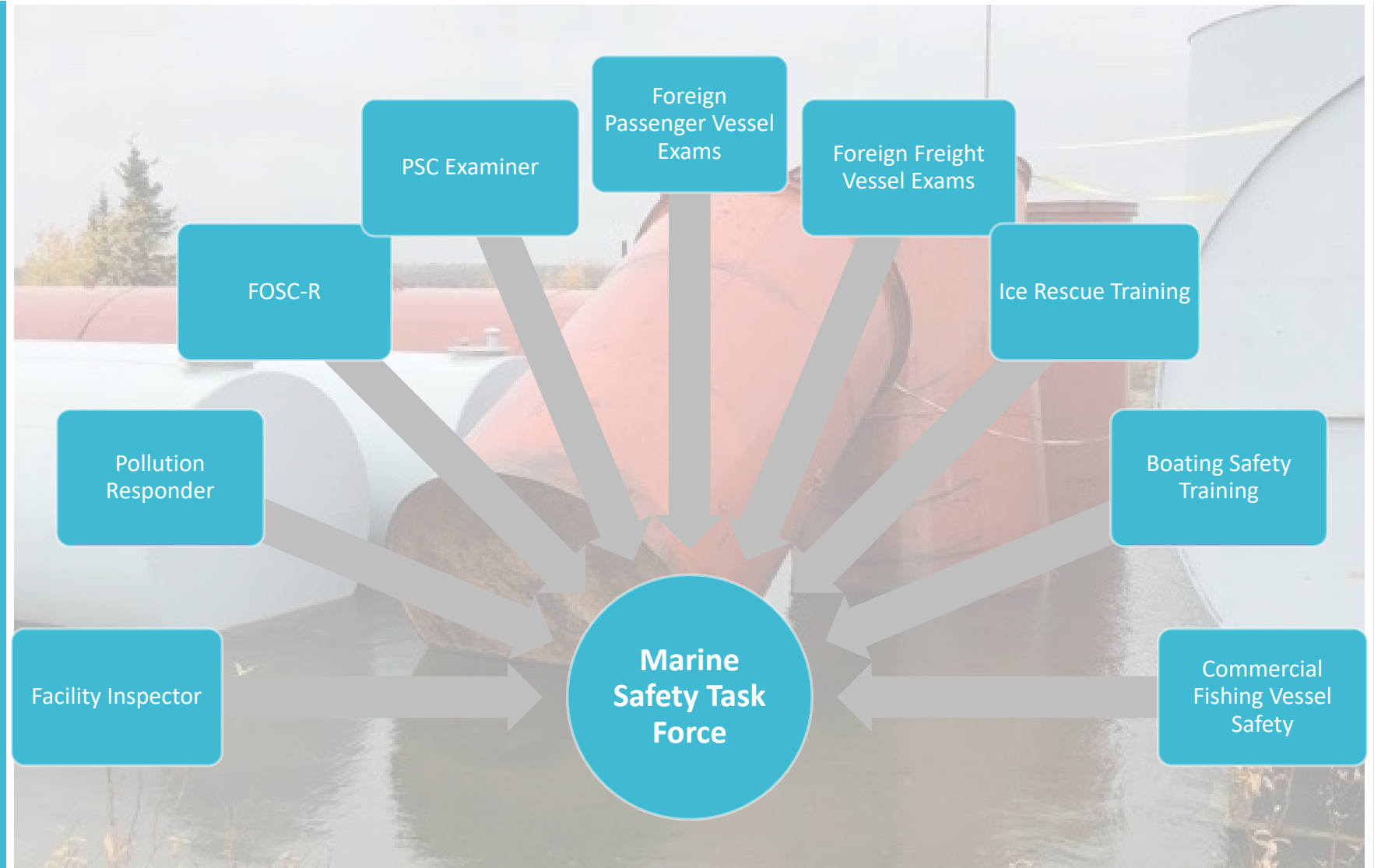
BLUF: “Getting dedicated and qualified CG personnel... into the right hub communities... at the right time.”

MSTF Deployment Model

Ensures Sector Anchorage’s regulatory mission is completed as efficiently as possible given limited funding & personnel

Teams deploy to Alaska hub communities for 10-14 days:

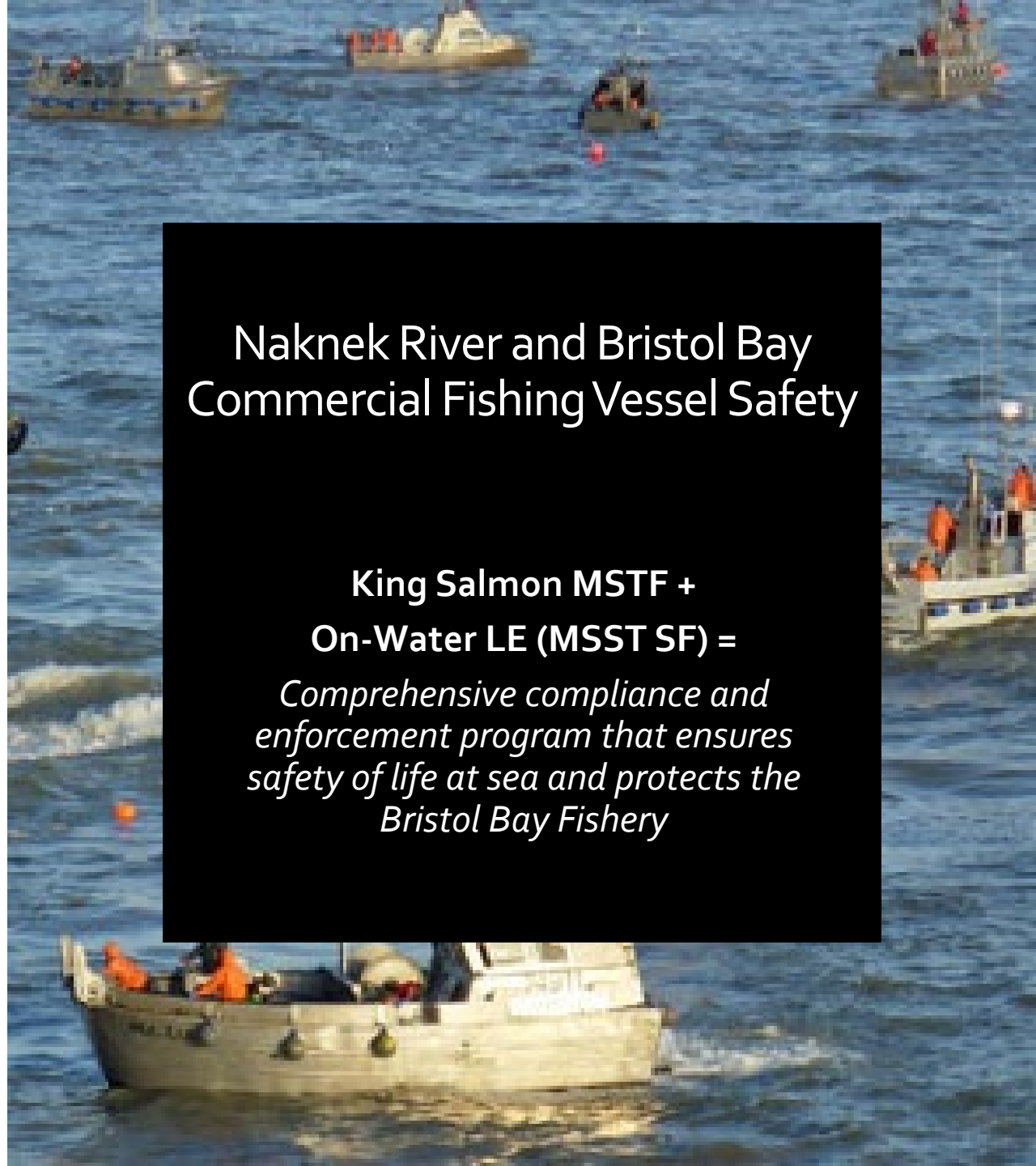
Aniak, Bethel, Dillingham, Fairbanks, Galena, King Salmon, Kotzebue, Nome, Prudhoe Bay, St. Mary’s, and Utqiagvik (Barrow)





Naknek River and Bristol Bay Commercial Fishing Vessel Safety

**King Salmon MSTF +
On-Water LE (MSST SF) =**
*Comprehensive compliance and
enforcement program that ensures
safety of life at sea and protects the
Bristol Bay Fishery*



Living Marine Resource Law Enforcement



59

Commercial Fishing Vessels
Queried within Bristol Bay
Region



27

Living Marine
Resource Boardings



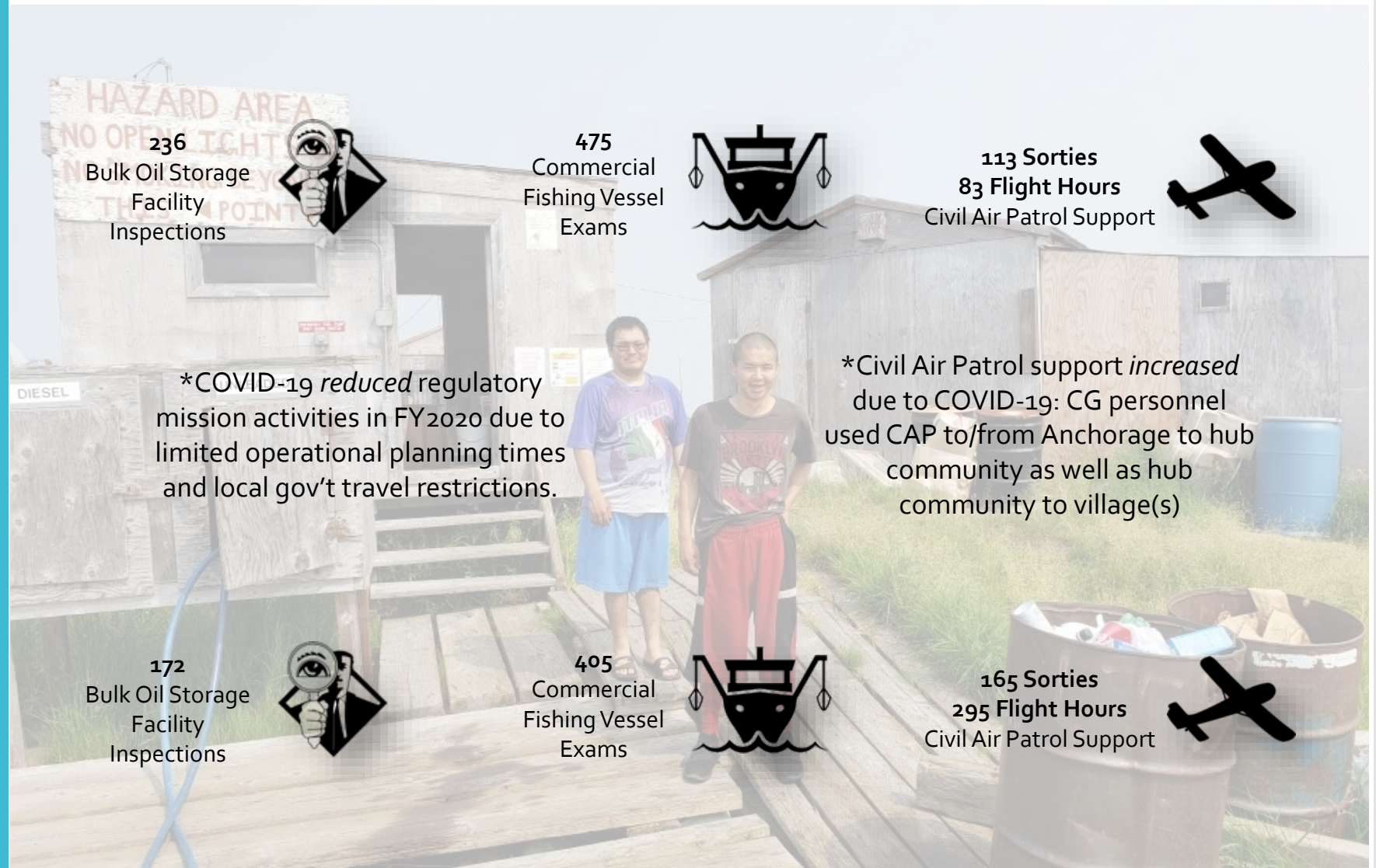
5

Voyages terminated



MSTF 2019 By the Numbers

MSTF 2020 By the Numbers*





BEECHCRAFT AK ARMY NG C-12 HURON

Benefits to MSTF Ops

- The C-12 provides multi-mission support to the various MSTF deployments
- Provides timely movement of MSTF personnel to critical locations throughout Western Alaska
- Unlike commercial air, C-12 support provides dedicated transportation service similar to Civil Air Patrol
- No lost luggage or cargo critical to training and mission events experienced using commercial air

C-12 Support

Image: Just prior to departure to
King Salmon, with 14 CG passengers!

King Salmon/Dillingham – June 14- June 25 (14 PAX)

Kotzebue – July 6-12 (5 PAX)

Nome – July 19-30 (8 PAX)

Aniak – August 6-16 (2 PAX)

Bethel – August 23-31 (6 PAX)



QUESTIONS?



AWA ACP VERSION 2020.0

Update 2020.0 signed in December 2020

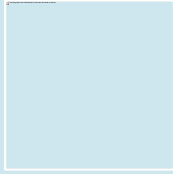
ACP Admin Subcommittee is reviewing the results of the CG National Review Panel to identify potential updates for 2020.1

ARCTIC AND WESTERN ALASKA AREA CONTINGENCY PLAN

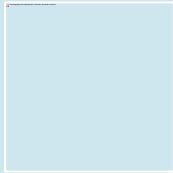
November 2019
Version 2018.1



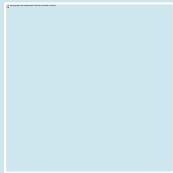
AWA Area Committee Meeting Wrap-Up



Public Comment(s)



On-Scene Coordinator Closing Remarks



Next Meeting